

Project Status	DATE	BY
DESIGNED		
PERMITTED		
CONSTRUCTED		
AS BUILT		

GENERAL PLAN NOTES:

- A. MECHANICAL, ELECTRICAL AND PLUMBING (MEP) SHALL BE INSTALLED IN ACCORDANCE WITH THE 2015 NATIONAL ELECTRICAL CODE, 2015 INTERNATIONAL MECHANICAL AND PLUMBING CODES, AND 2015 INTERNATIONAL FIRE AND SAFETY CODES. ALL NEW CONSTRUCTION SHALL BE INSTALLED IN ACCORDANCE WITH THE 2015 NATIONAL ELECTRICAL CODE, 2015 INTERNATIONAL MECHANICAL AND PLUMBING CODES, AND 2015 INTERNATIONAL FIRE AND SAFETY CODES.
- B. ALL NEW CONSTRUCTION SHALL BE INSTALLED IN ACCORDANCE WITH THE 2015 NATIONAL ELECTRICAL CODE, 2015 INTERNATIONAL MECHANICAL AND PLUMBING CODES, AND 2015 INTERNATIONAL FIRE AND SAFETY CODES.
- C. ALL NEW CONSTRUCTION SHALL BE INSTALLED IN ACCORDANCE WITH THE 2015 NATIONAL ELECTRICAL CODE, 2015 INTERNATIONAL MECHANICAL AND PLUMBING CODES, AND 2015 INTERNATIONAL FIRE AND SAFETY CODES.
- D. EXISTING DIMENSIONS ARE FROM CORNER TO CORNER, UNLESS NOTED OTHERWISE. ALL DIMENSIONS SHALL BE AS SHOWN ON THIS PLAN UNLESS NOTED OTHERWISE.
- E. INTERIOR DIMENSIONS ARE FROM FACE OF FRAME UNLESS NOTED OTHERWISE. ALL DIMENSIONS SHALL BE AS SHOWN ON THIS PLAN UNLESS NOTED OTHERWISE.
- F. CONTRACTOR SHALL VERIFY ARCHITECT, ENGINEER AND OWNER'S DIMENSIONS AND CONDITIONS OF WORK BEFORE COMMENCING WORK. CONTRACTOR SHALL VERIFY DIMENSIONS AND CONDITIONS OF WORK BEFORE COMMENCING WORK.
- G. PROVIDE COORDINATION FOR ALL EXISTING WALLS AND INTERIOR WALLS AND PARTITIONS.
- H. FIRE LISTING FOR CABINET, CASE, AND CASEWORK SHALL BE PROVIDED TO THE ARCHITECT AND ENGINEER FOR REVIEW AND APPROVAL.
- I. ALL NEW CONSTRUCTION SHALL BE INSTALLED IN ACCORDANCE WITH THE 2015 NATIONAL ELECTRICAL CODE, 2015 INTERNATIONAL MECHANICAL AND PLUMBING CODES, AND 2015 INTERNATIONAL FIRE AND SAFETY CODES.
- J. ALL NEW CONSTRUCTION SHALL BE INSTALLED IN ACCORDANCE WITH THE 2015 NATIONAL ELECTRICAL CODE, 2015 INTERNATIONAL MECHANICAL AND PLUMBING CODES, AND 2015 INTERNATIONAL FIRE AND SAFETY CODES.
- K. ALL NEW CONSTRUCTION SHALL BE INSTALLED IN ACCORDANCE WITH THE 2015 NATIONAL ELECTRICAL CODE, 2015 INTERNATIONAL MECHANICAL AND PLUMBING CODES, AND 2015 INTERNATIONAL FIRE AND SAFETY CODES.
- L. ALL NEW CONSTRUCTION SHALL BE INSTALLED IN ACCORDANCE WITH THE 2015 NATIONAL ELECTRICAL CODE, 2015 INTERNATIONAL MECHANICAL AND PLUMBING CODES, AND 2015 INTERNATIONAL FIRE AND SAFETY CODES.

KEY PLAN NOTES:

1. EXISTING REFRIGERATOR TO REMAIN
2. PARTIAL HEIGHT WALL
3. ADA HEIGHT COUNTERTOP REQUIRED AT POOL 2, 107
4. MAX HEIGHT 3' 0" LONG MIN
5. CHANGES TO EXISTING WALL POSITION (INDICATED BY DASHED LINE)
6. FIRE EXTINGUISHER CABINET LOCATION

WALL RATING KEY:

- 1. 1 HORIZONTAL WALL
- 2. 1 HORIZONTAL WALL
- 3. 1 HORIZONTAL WALL
- 4. 1 HORIZONTAL WALL
- 5. 1 HORIZONTAL WALL
- 6. 1 HORIZONTAL WALL
- 7. 1 HORIZONTAL WALL
- 8. 1 HORIZONTAL WALL
- 9. 1 HORIZONTAL WALL
- 10. 1 HORIZONTAL WALL
- 11. 1 HORIZONTAL WALL
- 12. 1 HORIZONTAL WALL
- 13. 1 HORIZONTAL WALL
- 14. 1 HORIZONTAL WALL
- 15. 1 HORIZONTAL WALL
- 16. 1 HORIZONTAL WALL
- 17. 1 HORIZONTAL WALL
- 18. 1 HORIZONTAL WALL
- 19. 1 HORIZONTAL WALL
- 20. 1 HORIZONTAL WALL
- 21. 1 HORIZONTAL WALL
- 22. 1 HORIZONTAL WALL
- 23. 1 HORIZONTAL WALL
- 24. 1 HORIZONTAL WALL
- 25. 1 HORIZONTAL WALL
- 26. 1 HORIZONTAL WALL
- 27. 1 HORIZONTAL WALL
- 28. 1 HORIZONTAL WALL
- 29. 1 HORIZONTAL WALL
- 30. 1 HORIZONTAL WALL
- 31. 1 HORIZONTAL WALL
- 32. 1 HORIZONTAL WALL
- 33. 1 HORIZONTAL WALL
- 34. 1 HORIZONTAL WALL
- 35. 1 HORIZONTAL WALL
- 36. 1 HORIZONTAL WALL
- 37. 1 HORIZONTAL WALL
- 38. 1 HORIZONTAL WALL
- 39. 1 HORIZONTAL WALL
- 40. 1 HORIZONTAL WALL
- 41. 1 HORIZONTAL WALL
- 42. 1 HORIZONTAL WALL
- 43. 1 HORIZONTAL WALL
- 44. 1 HORIZONTAL WALL
- 45. 1 HORIZONTAL WALL
- 46. 1 HORIZONTAL WALL
- 47. 1 HORIZONTAL WALL
- 48. 1 HORIZONTAL WALL
- 49. 1 HORIZONTAL WALL
- 50. 1 HORIZONTAL WALL

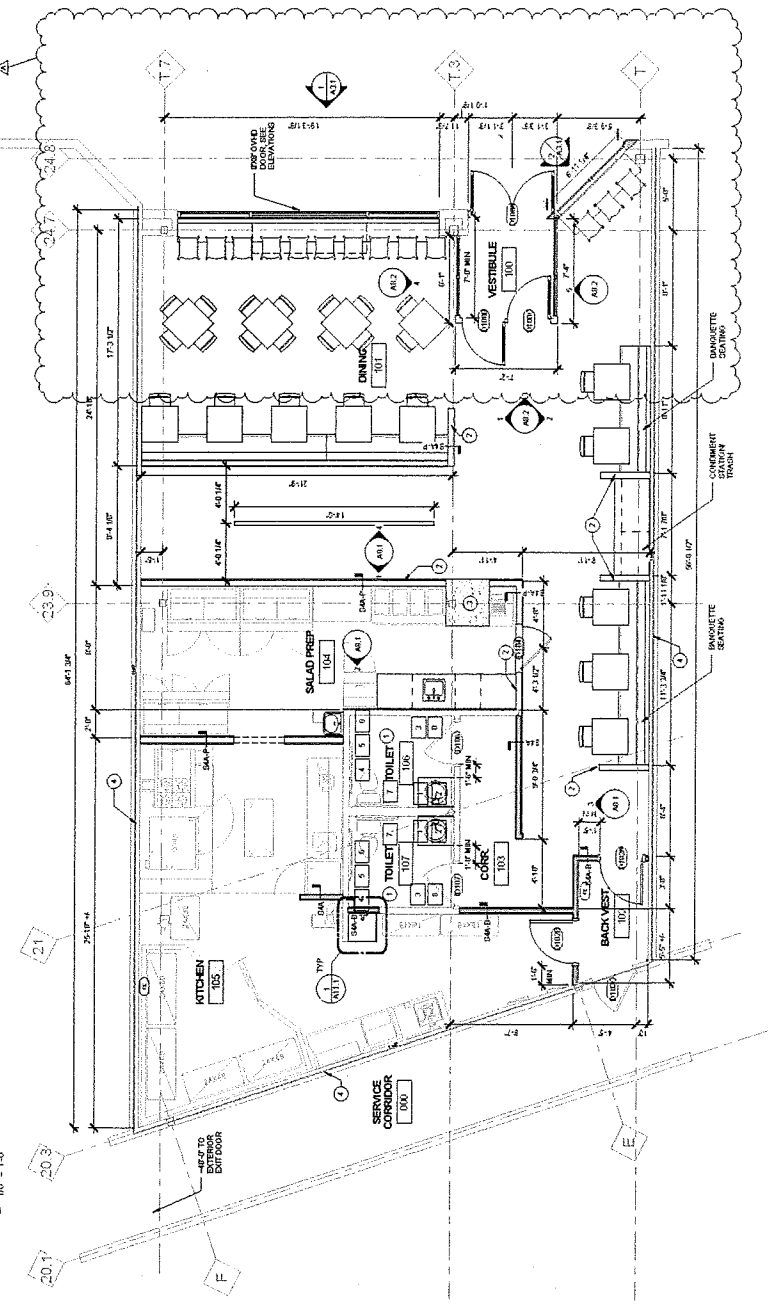
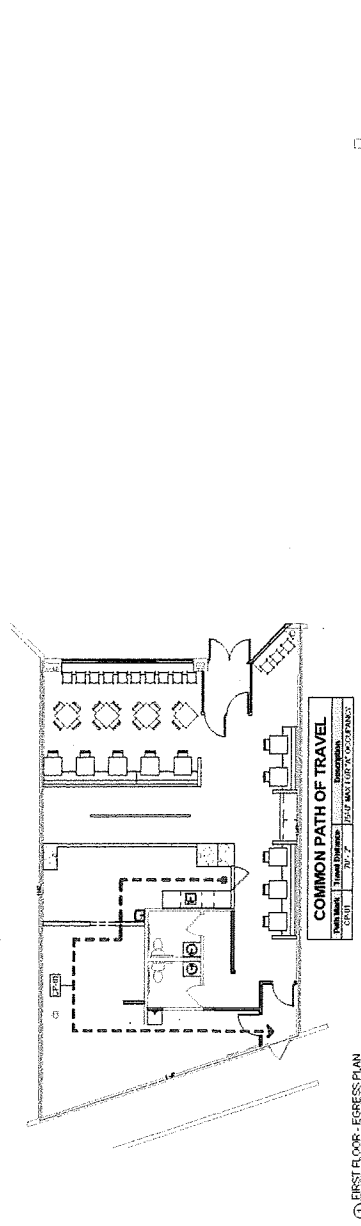
HATCH PATTERN KEY:

[Pattern]	NEW CONSTRUCTION
[Pattern]	EXISTING CONSTRUCTION
[Pattern]	DEMOLITION

TOILET ROOM ACCESSORIES SCHEDULE SEE A0.2 FOR MOUNTING HEIGHTS:

1. WALL MOUNTED MIRROR
2. RECESSED PAPER TOWEL AND WASTE RECEPTACLE
3. SANITARY TISSUE DISPENSER
4. TOILET TISSUE DISPENSER
5. 47" LONG GRAB BAR HORIZONTAL, 4" P. VERTICAL
6. 36" LONG GRAB BAR HORIZONTAL
7. ROSE HOLE, ROUND DOOR
- 8.
- 9.

*NOTE - ALL EXPOSED PLUMBING BELOW GROUND TO BE WRAPPED IN THERMAL BARRIER.





FORAGE

KITCHEN

SIGNATURES

BATATAS RANCHEROS

romaine, sweet potatoes, black beans, corn,
green onion, cilantro, avocado, jerk chicken, rancheros dressing 10.5

FORBIDDEN FORAGER

spinach, black rice, sunflower sprouts,
sunflower seeds, carrot, charred peppers, thai basil pesto 9.5

LOCAL ROOTS

mixed greens, beets, goat cheese, fennel,
caramelized walnuts, lemon herb chicken, maple sherry vinaigrette 11

CULTURED COBB

romaine, corn, tomatoes, chives, bleu cheese, avocado
Nueske's bacon lardons, lemon herb chicken, red wine vinaigrette 12.5

CAESAR SALAD

romaine, parmesan cheese, egg,
ciabatta croutons, caesar dressing 8

SWEET AND SOUR SALAD

kale, aigre doux (sweet + sour sauce),
squash, house ricotta, sunflower seeds 10

POWER BOWL

black rice, sweet potato, poblano slaw,
guacamole, jerk chicken, green onion, green goddess dressing 9

THAI BOWL

black rice, daikon, thai basil,
sweet potato, lemon herb chicken, curry, thai basil pesto 9

CLUB MED BOWL

quinoa, mixed greens, tomatoes, cucumbers, raisins, feta,
hummus, flatbread, cilantro, lemon herb chicken, zhoug 11

BUILD YOUR OWN 6.5

BASES (CHOOSE TWO)

KALE	SPINACH	MIXED GREENS	ROMAINE
QUINOA		FORBIDDEN BLACK RICE	

STANDARDS (CHOOSE FOUR)

sweet potato	charred peppers	cucumbers	daikon
black beans	fennel	radish	poblano slaw
corn	beets	cilantro	lentils
green onion	chives	flatbread	carrot
snap peas	tomatoes	sunflower sprouts	squash

EXTRAS

\$1.00	\$1.50	\$1.50	\$3.00
olives	hearts of palm	local goat cheese	lemon herb chicken
feta	caramelized walnuts	local parm	jerk chicken
sunflower seeds	sunflower seeds	house ricotta	chipotle tempeh
ricotta	Nueske's bacon	local egg	
golden raisins	guacamole / avocado	hummus	

DRESSINGS*

green goddess	maple sherry vin	cashew ranch	caesar	fresh lemon/lime
rancheros	red wine vin	thai basil pesto	zhoug	olive oil

*all dressings are made in house and are gluten free and dairy free