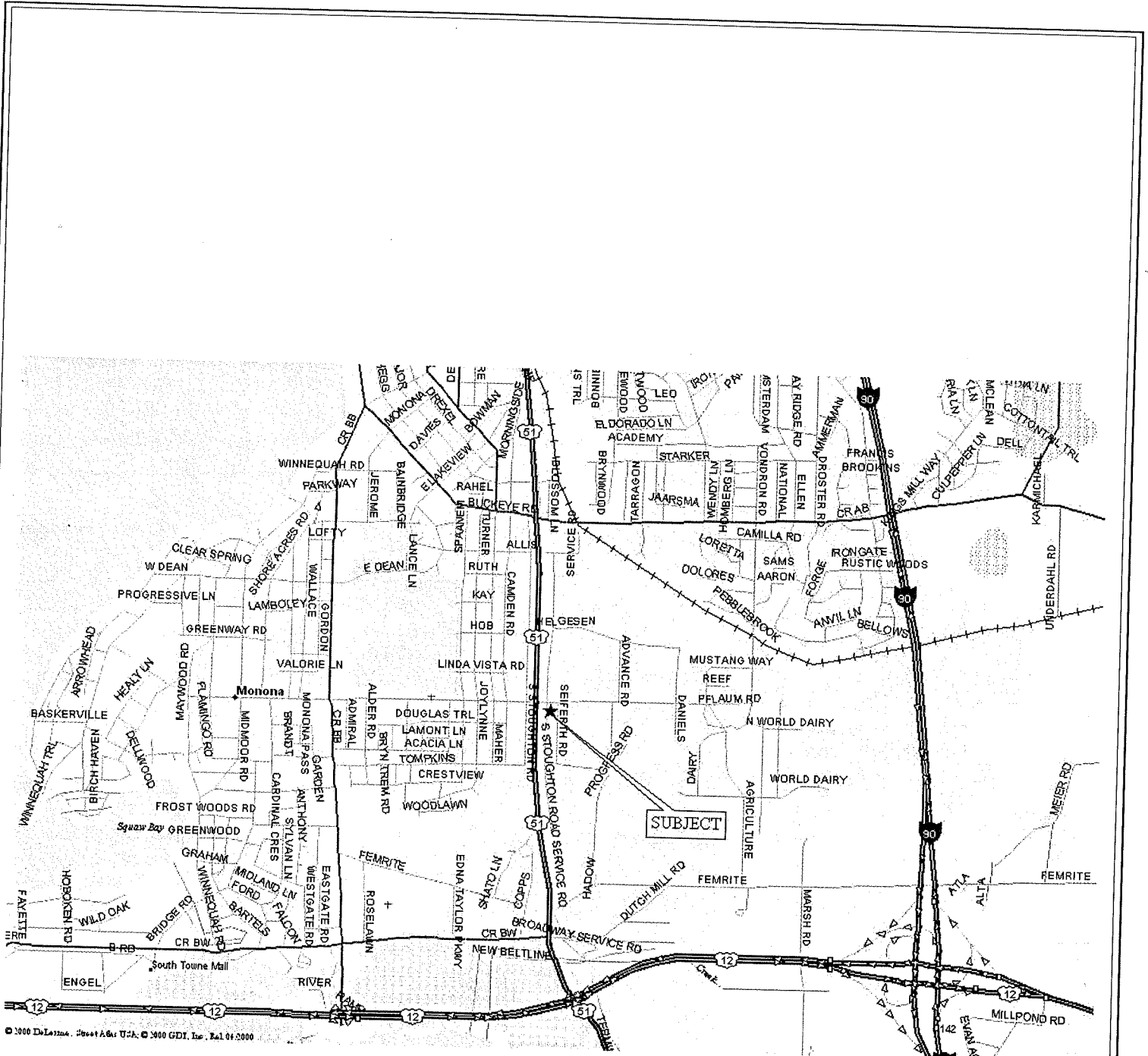


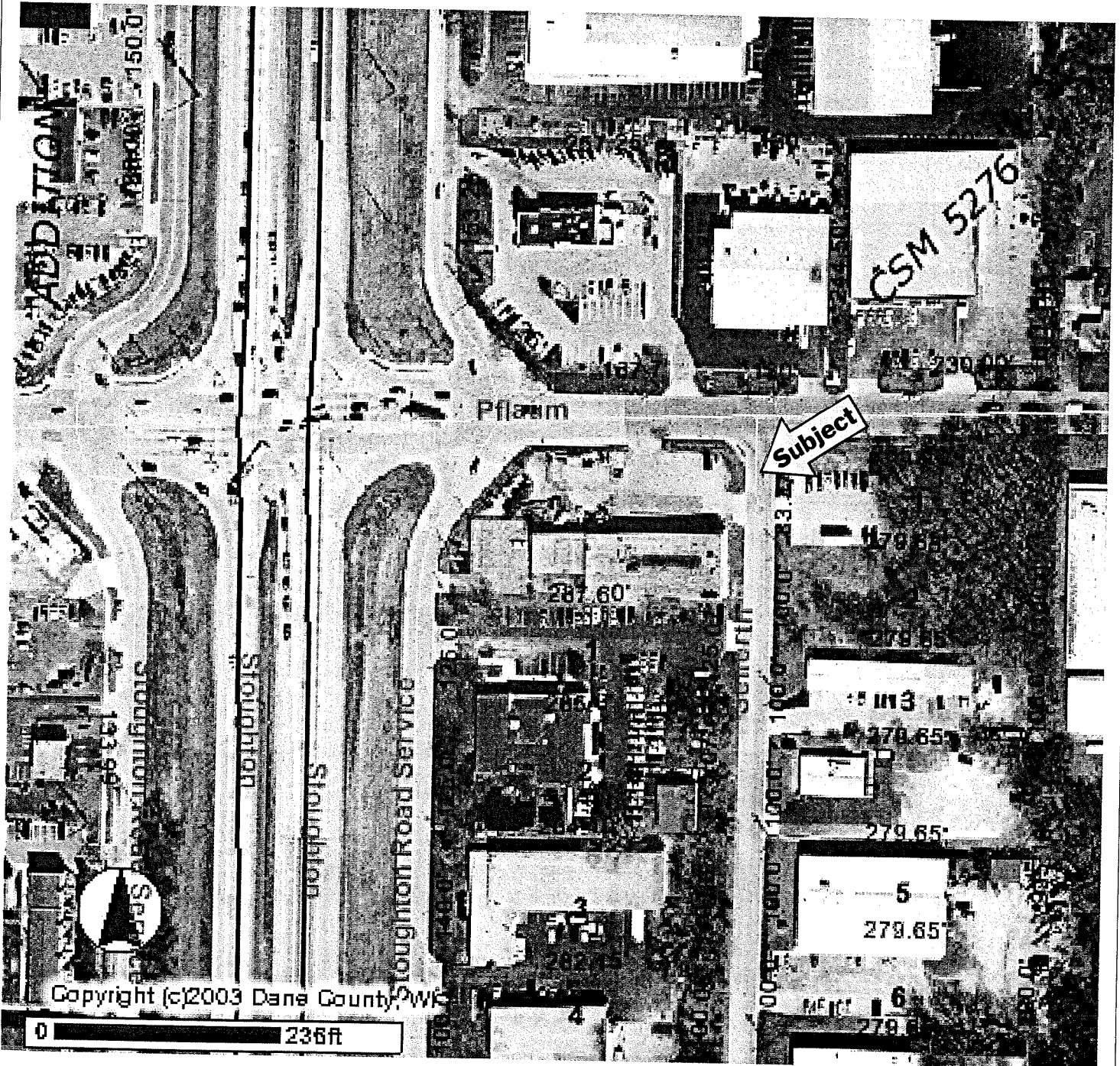
DISTRICT LOCATION MAP

File No. 2501 S Stoughton Rd



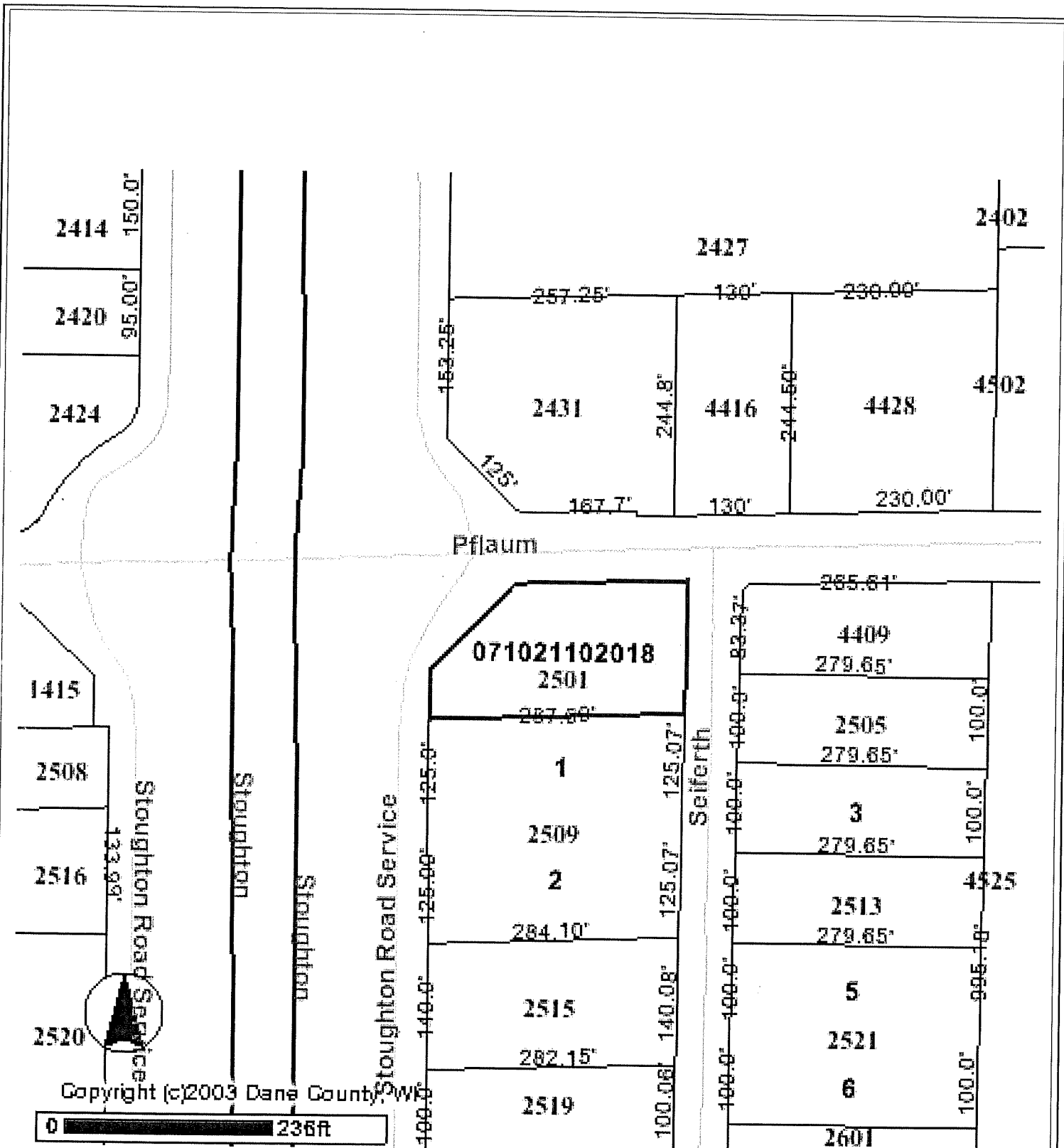
© 2000 DeLorme, Street Atlas USA, © 2000 CDI, Inc., Ed. 01/2000





PLAT MAP

File No. 2501 S Stoughton Rd

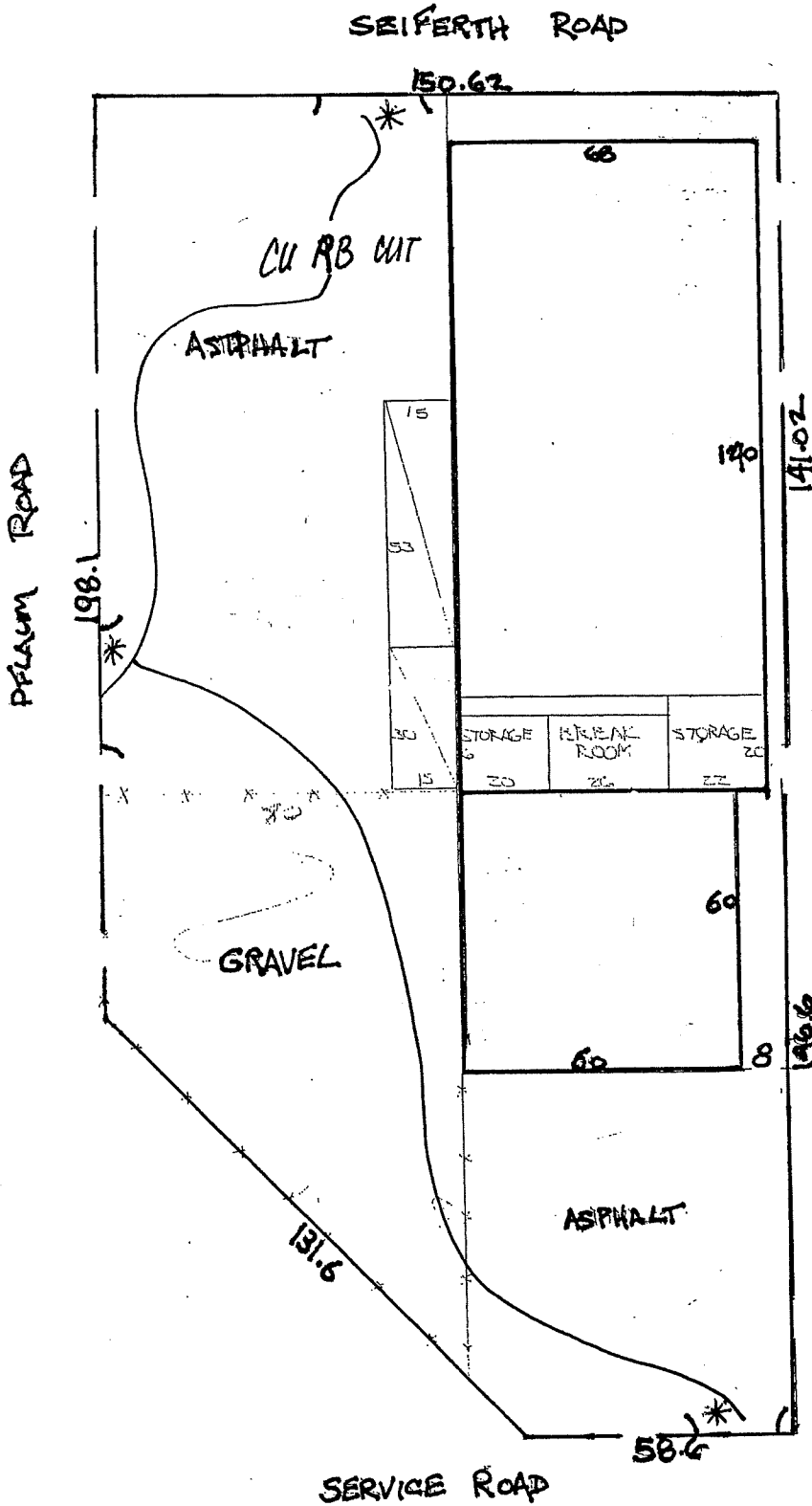


Legal Description

Part of Outlot 19, Blooming Grove Assessor's Plat No.2, beginning at the Northeast Corner of Section 21, Town 7 North, Range 10 East, being the northeast corner of Outlot 19, then S87deg55minW, 340'; then S0deg32min50secW, 33' to the point of beginning. Then continuing S0deg32min50secW, 150.62'; then S87deg42min49secW, 141.02'; then N0deg32min50secE, 1'; then S87deg,55minW, 146.6'; then N0deg15minW, 58.6'; then n43deg50minE, 131.6', then N87deg55minE, 198.1' to the point of beginning.

PERIMETER AND FLOOR PLAN

0710-211-0201-8
 2501 S. STUGHTEN RD
 LOT AREA-39,500 #



BLDG AREA
 $60 \times 60 = 3600$
 $140 \times 68 = 9520$
13120 #

Hgt. 20' EXT
 18' INT

APRONS REMOVED *