

Studying Tree Canopy

City of Milwaukee



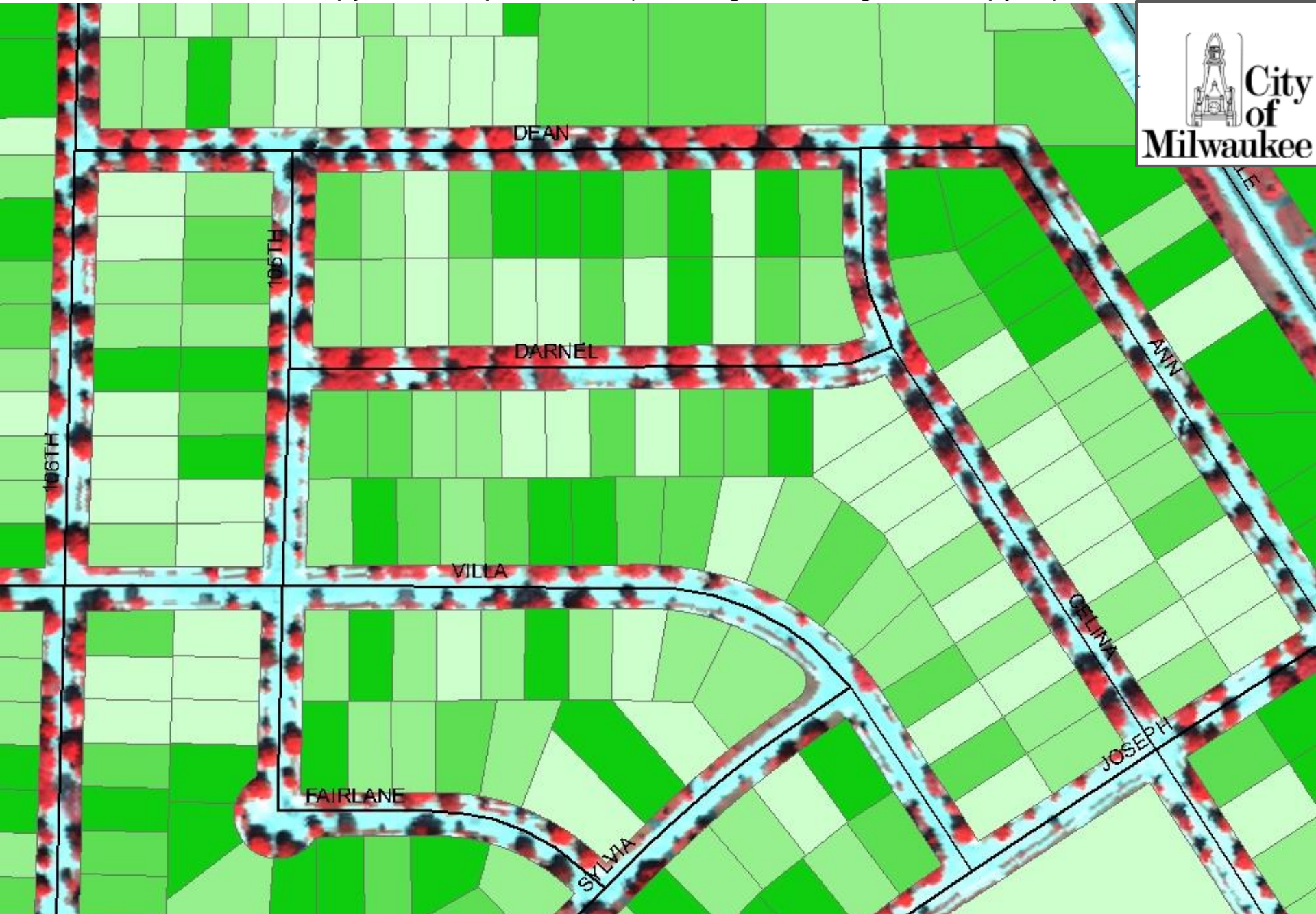
Project Year 2009

- Multi-spectral
- Identify % canopy
- Identified ash trees at 80% accuracy for visible crowns greater than 150 sq. ft.
- Total cost \$167,000
- Helped identify plantable spaces at the parcel level across the city
- Created tree canopy goals

Tree Canopy & Grass Planting Space Split by Parcels & Public Right-of-Way



Tree Canopy Percent per Parcel (darker green = higher canopy %)



DEAN

DARNEL

VILLA

FAIRLANE

SYLVIA

CELINA

JOSEPH

ANN

105TH

106TH



MARTIN DRIVE NEIGHBORHOOD

Percent Tree Canopy (2009)

- NONE
- LOW <25%
- Medium 25-50%
- High 50-100%

Tree Cover per Aldermanic District



ALDERMAN	Pct Canopy	Projected Pct Canopy Goal	Pct Grass	Acres
Ashanti Hamilton	26%	36%	32%	4,459
Joe Davis, Sr.	18%	28%	34%	3,626
Nik Kovac	29%	34%	22%	2,366
Bob Bauman	12%	17%	19%	2,455
Jim Bohl	25%	35%	38%	7,101
Milele Coggs	20%	30%	28%	3,014
Willie C. Wade	23%	33%	29%	2,565
Bob Donovan	19%	29%	22%	2,583
Robert Puente	20%	30%	43%	9,185
Michael Murphy	24%	34%	33%	4,601
Joe Dudzik	23%	33%	34%	3,856
James N. Witkowiak	13%	18%	17%	2,100
Terry Witkowski	15%	25%	41%	7,669
T. Anthony Zielinski	20%	30%	26%	3,732
Willie Hines	18%	28%	29%	2,534

