

Decline in Madison Family Child Care Providers 2006-2018

Data analysis of the number of regulated family child care providers over time.

- Data includes certified and licensed family child care providers who had a City of Madison zip code, which may include programs that are in Monona and Fitchburg. This does not include group child care programs.
- Trends show an obvious decrease in the number of regulated child care providers for the past 12 years.
- This trend is consistent throughout the 4-C service delivery area as well as statewide.

Chart A

Total Number Of Regulated Family Child Care Providers With City of Madison Zip Codes

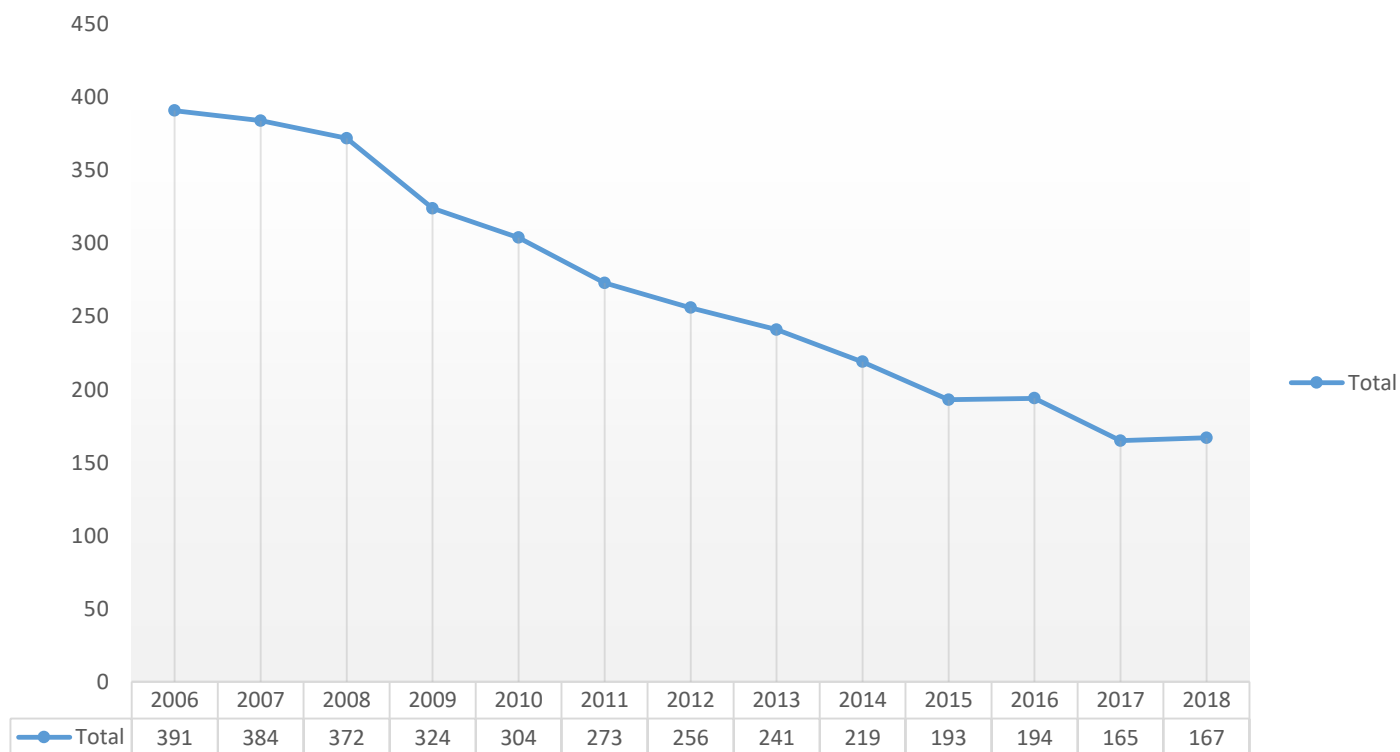


Chart B

Family Child Care Providers With City of Madison Zip Codes Broken Out By Regulation Type

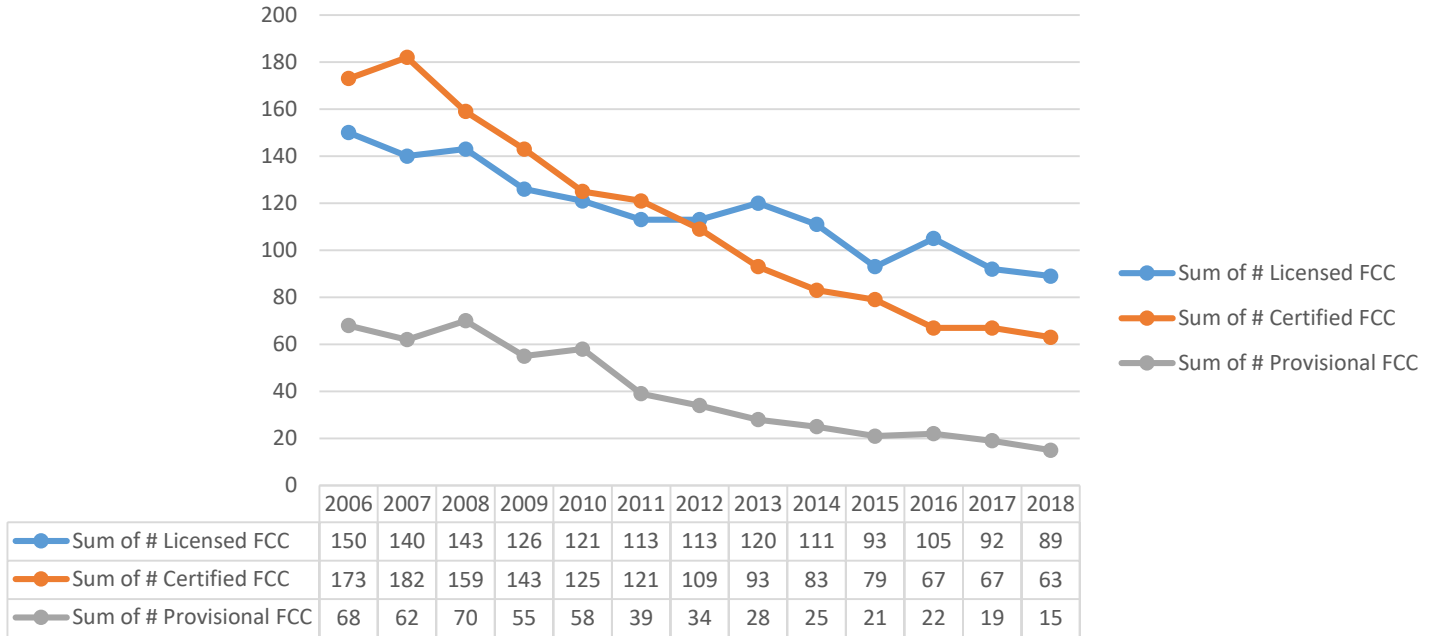
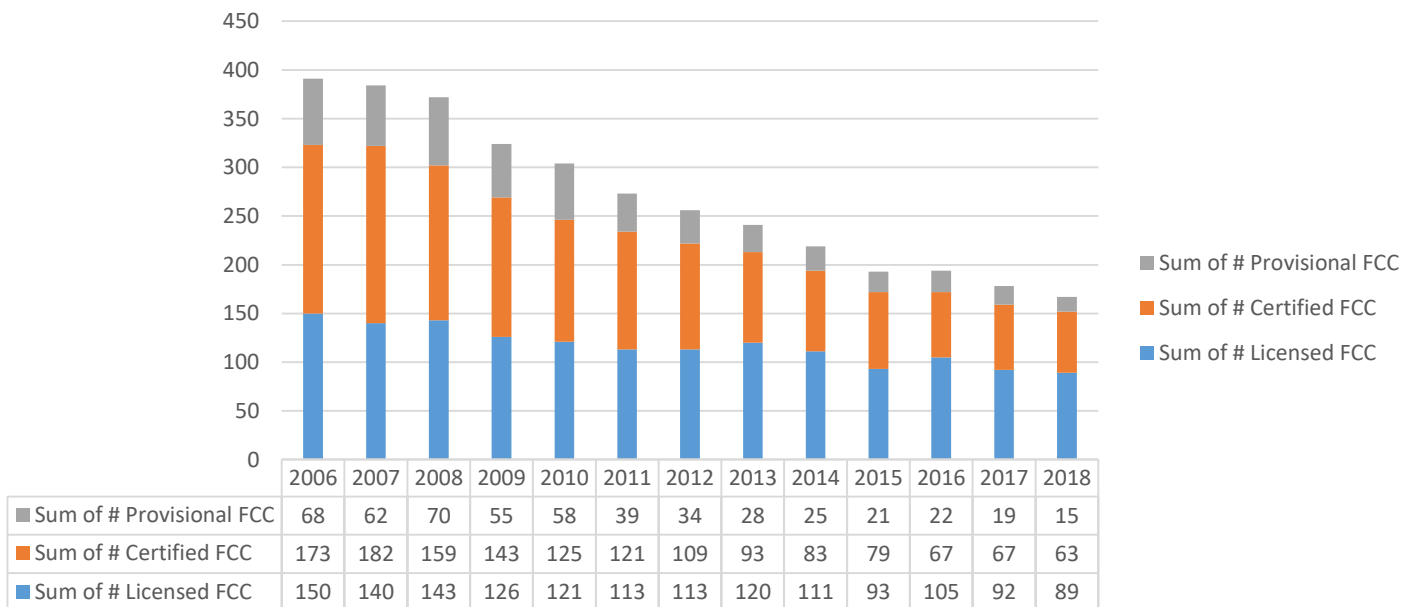


Chart C

Family Child Care Providers With City Of Madison Zip Codes Broken Out By Regulation Type



Comparison Purposes

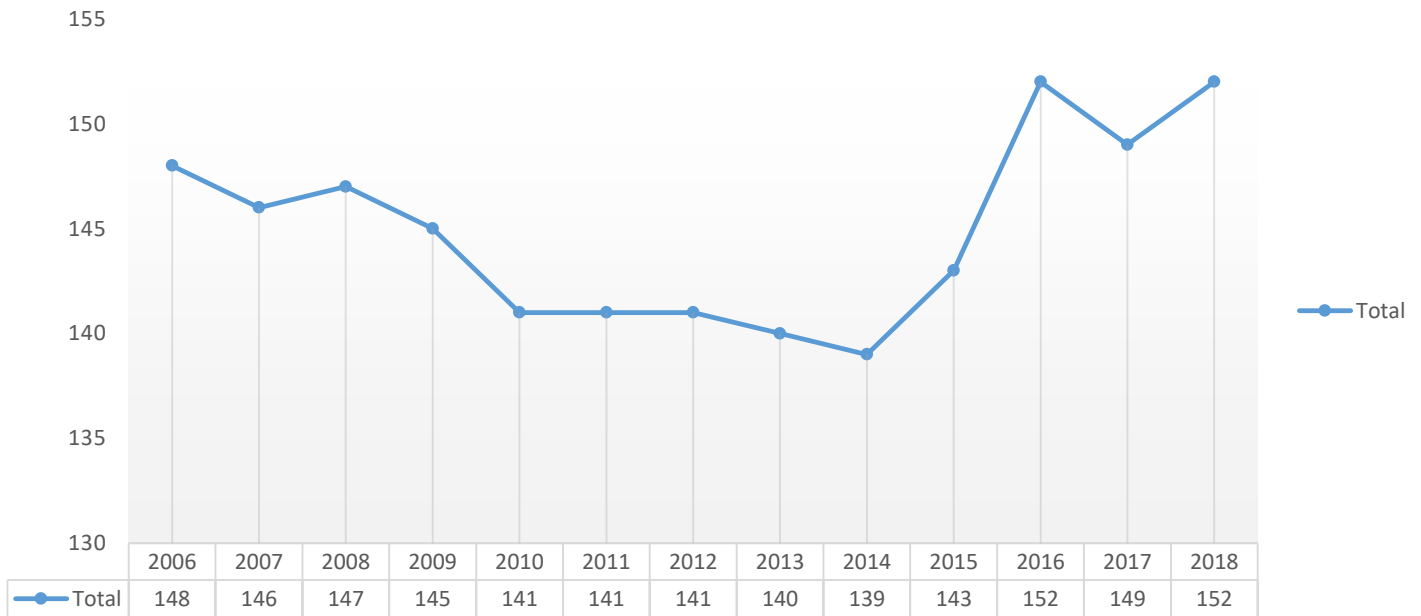
Madison Group Programs 2006-2018

Data analysis of the number of regulated group child care providers over time.

- Data includes all regulated group child care programs; camps, Head Start, centers, and preschools who had a City of Madison zip code, which may include programs that are in Monona and Fitchburg. This chart does not include family child care programs.

Chart D

Total Number Of Regulated Group Programs With City Of Madison Zip Codes



Comparison Purposes

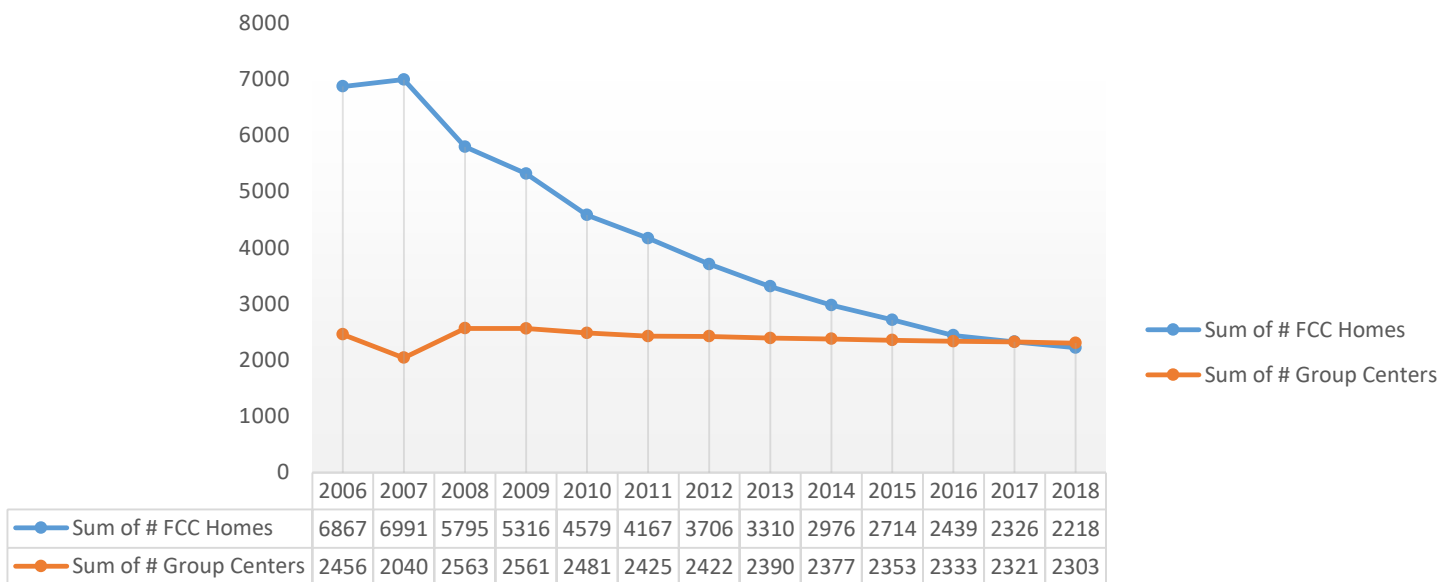
State of Wisconsin Regulated Family Child Care Homes and Group Programs 2006-2016

Data analysis of the number of regulated group child care providers over time.

- Data for group programs includes all regulated group child care programs; camps, Head Start, centers, and preschools
- Data for family child care homes includes all regulation types
- Data Source: Child Care Aware & DCF

Chart E

State of Wisconsin Total Number of Regulated Family Child Care and Group Centers



DATA SOURCE:
2006-2008 CHILD CARE AWARE STATE FACT SHEETS
2008-2018: DCF