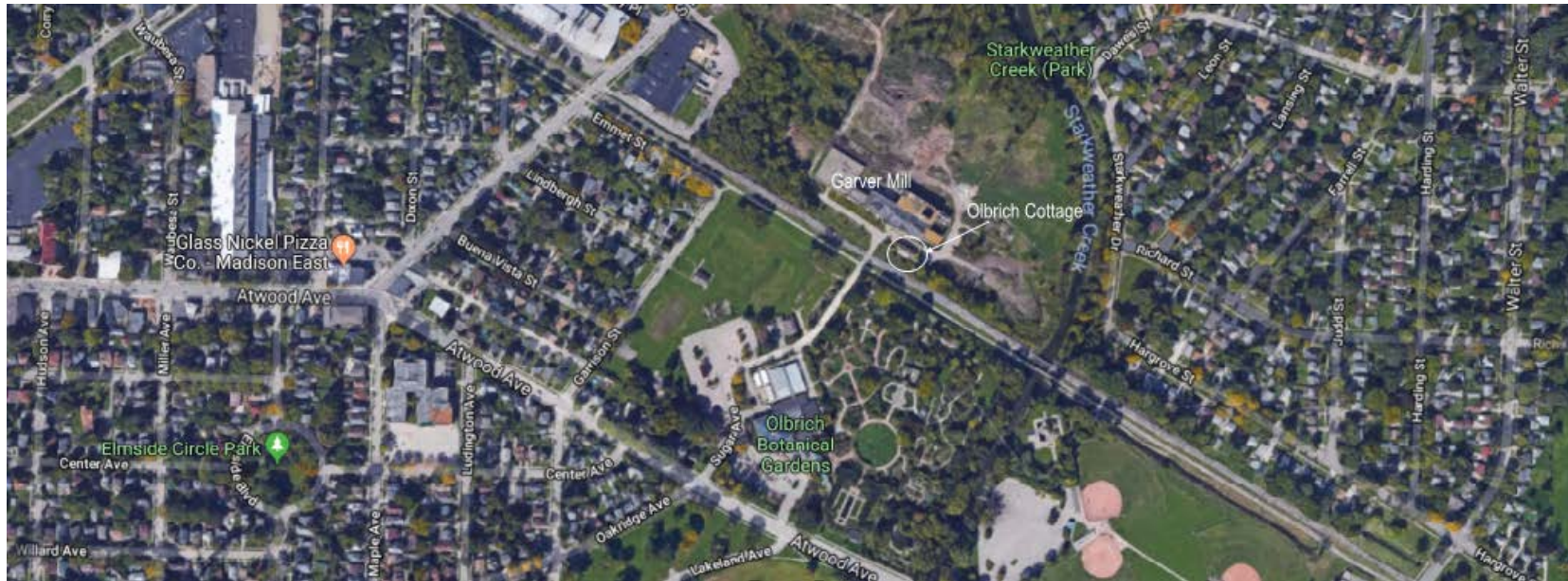


## OLBRICH COTTAGE ROOF REPLACEMENT PROJECT 10/8/18



The Cottage Building is part of the Garver Feed Mill building complex and is part of a locally designated landmark site and is listed on the National Register of Historic Places. This project will be reviewed by the State Historic Preservation Office and the Landmarks Commission.

The existing roof is showing wear and areas of failure. The lower level is getting water on the interior. To remedy these issues, the following project scope has been prepared:

- Tear off existing roof covering.

- Replace deteriorated areas of sheathing.

- Install ice and water shield at lower 6 feet from eave and roof paper on entire roof

- Install metal edge at the rakes and eaves.

- Install ridge vent.

- Install new asphalt 3 tab shingles.

- Install half round gutters and round downspouts at roof (not at door hoods).

- Repoint false chimney.

- Install new stepped flashing and coping at chimney.

- Repair soffit boards in kind.

- Paint hood elements and soffits and fascia.





### **OLBRICH COTTAGE ROOF REPLACEMENT PROJECT**

View of simple gable roof with 3 tab asphalt shingles and typical eave and rake conditions.





### **OLBRICH COTTAGE ROOF REPLACEMENT PROJECT**

View of simple gable roof with 3 tab asphalt shingles and typical penetrations. Please note the areas of shingle failure.