

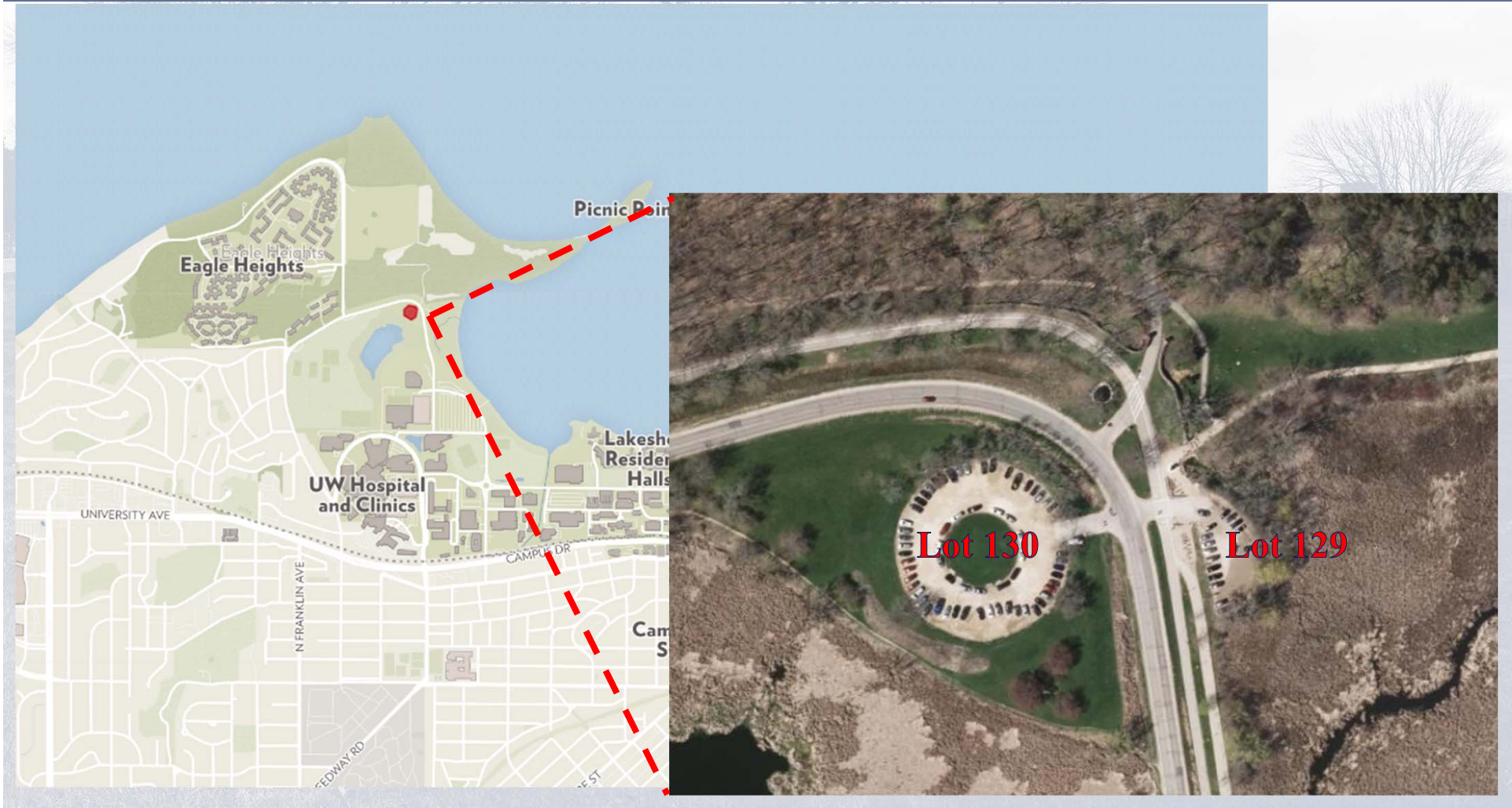


Parking Lots 129 & 130 Reconstruction University of Wisconsin – Madison



JOINT CAMPUS AREA
COMMITTEE 10/10/18

Project Location - Parking Lots 129 & 130



Existing Conditions – Parking Lots 129 & 130

Lot 129

- Gravel Parking Surface
- 28 total parking stalls (not marked)
- Payment required for parking via kiosk
- Tendency to flood during heavy rains
- Existing vegetation along bike path
 - mowed bluegrass lawn & canopy trees
- Existing vegetation along wetland/shoreline
 - Woody pioneer species

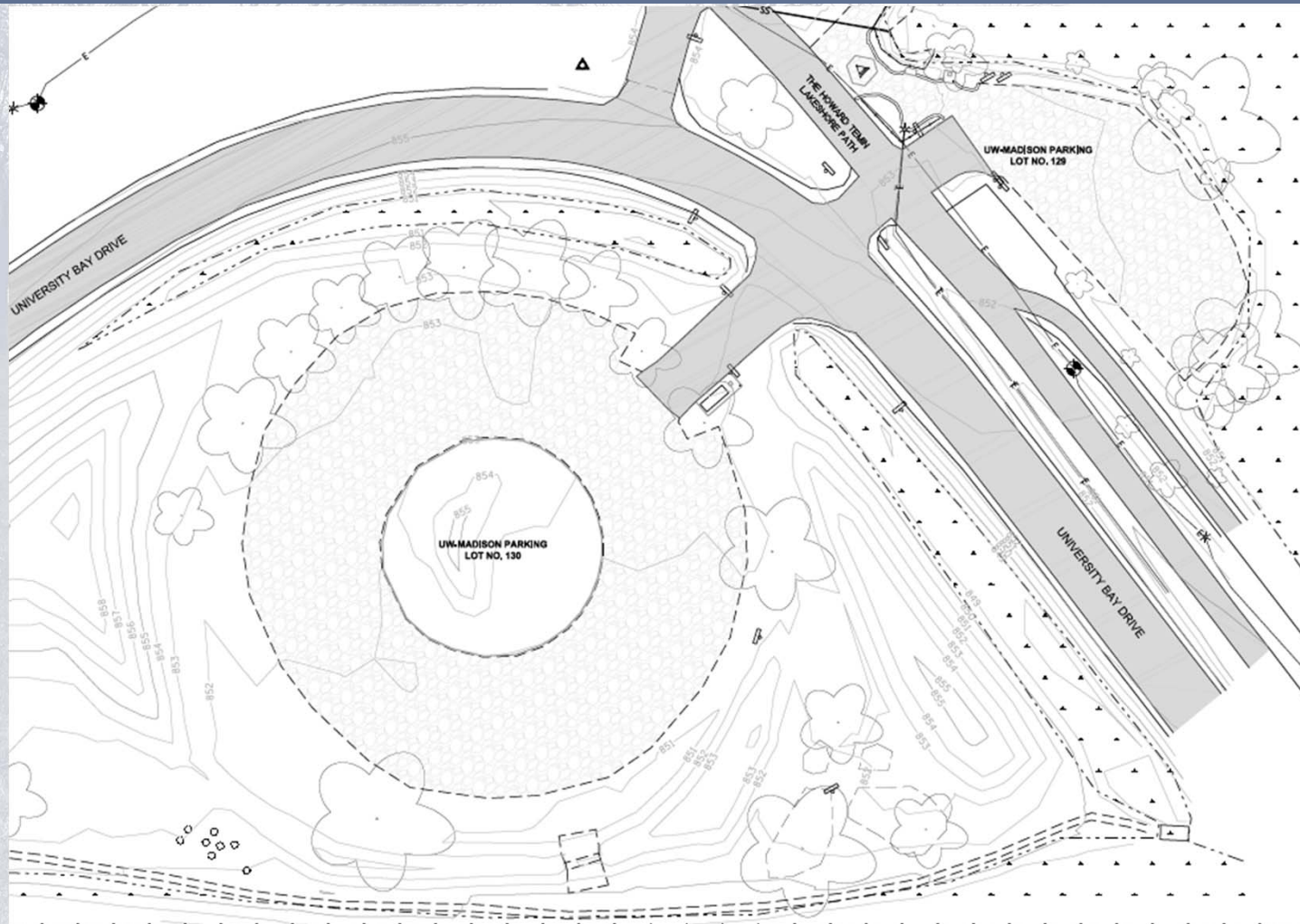


Lot 130

- Gravel Parking Surface
- 93 total parking stalls (not marked)
- Payment required for parking via kiosk
- Existing vegetation around parking lot
 - mowed bluegrass lawn & canopy trees – predominately Ash



Existing Conditions – Parking Lots 129 & 130



Proposed Improvements – Lots 129 & 130

Lot 129

- Deconstruct parking lot and remove gravel
- Add paved surface for bike parking

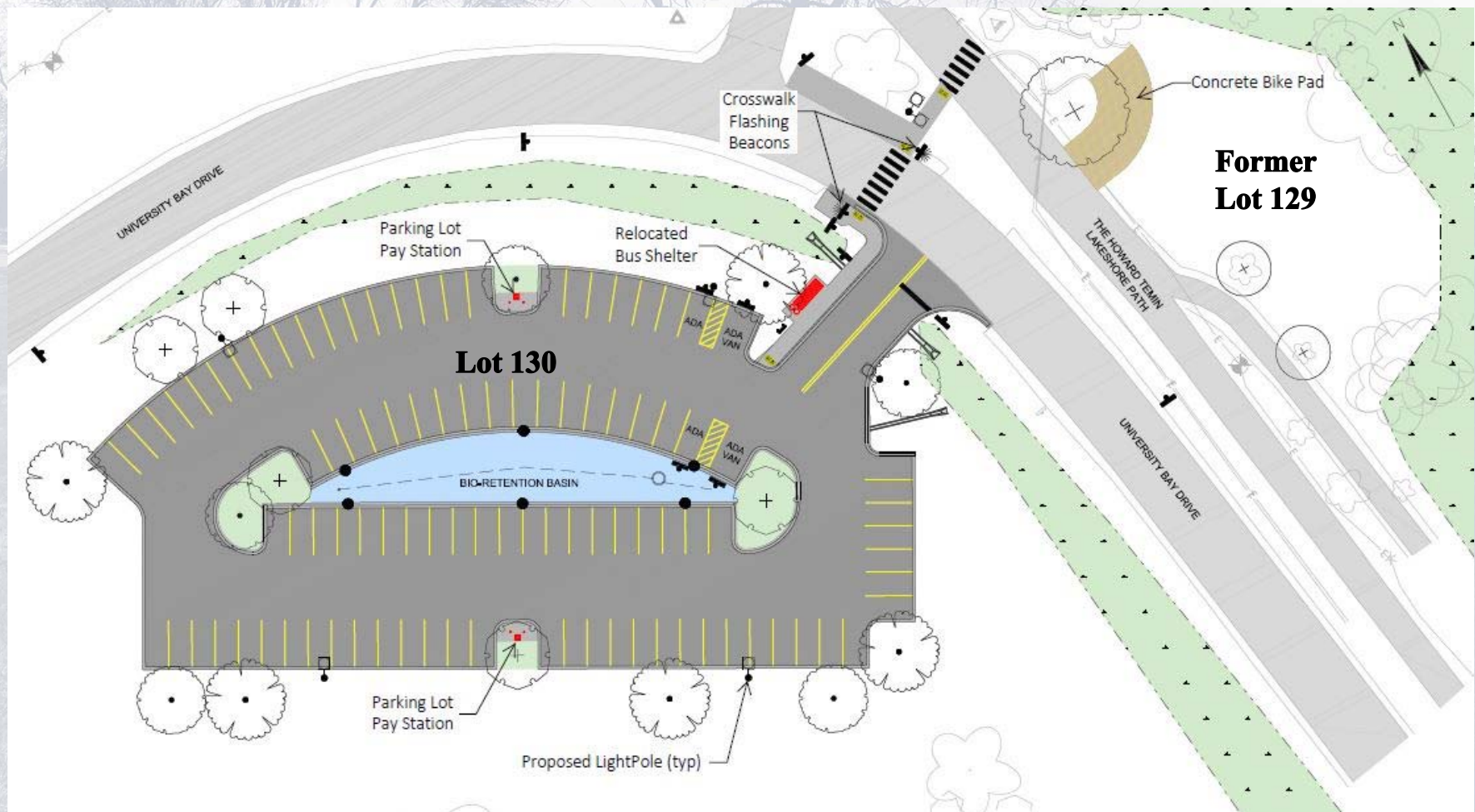
Lot 130

- Reconstruct Parking Lot (Revised Layout)
- Asphalt surface with curb and gutter only around interior basin and entrance
- 100 total parking spaces
 - 96 regular stalls / 4 ADA stalls
- Bioretention for stormwater management
- Compatible with future UW-Madison concepts
- Enhanced pedestrian crossing

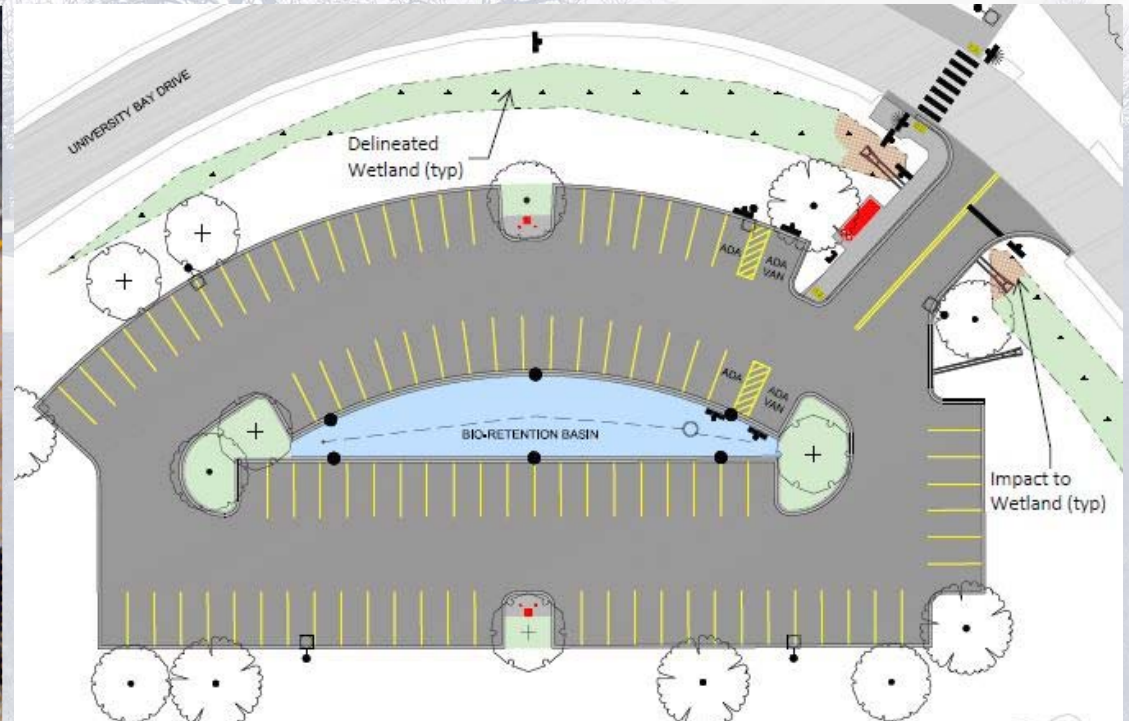


Revised Layout – DRB Preview
(July 2018)

Proposed Layout – Lot 130



Impacts to Wetlands

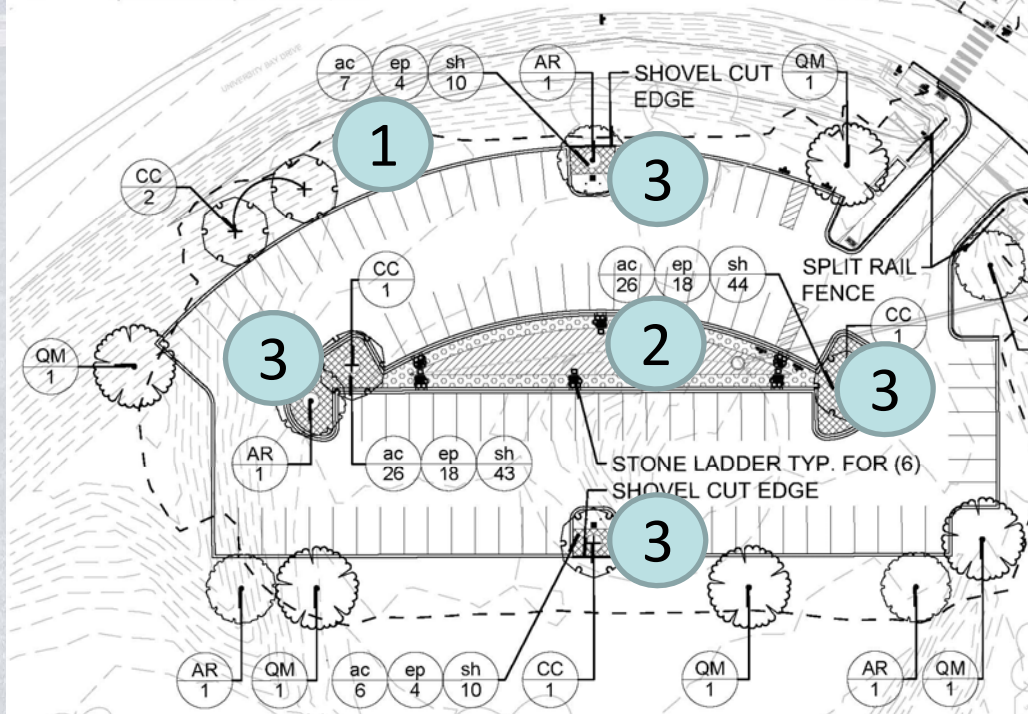


Planting and Landscape Restoration – Lot 130

PLANT_SCHEDULE

TREES	BOTANICAL NAME / COMMON NAME	CONT	CAL	QTY
AR	Acer rubrum 'Sun Valley' / 'Sun Valley' Red Maple	B & B	2.5" Cal	5
CC	Celtis occidentalis 'Chicagoland' / 'Chicagoland' Common Hackberry	B & B	2.5" Cal	5
QM	Quercus muehlenbergii / Chinkapin Oak	B & B	2.5" Cal	5

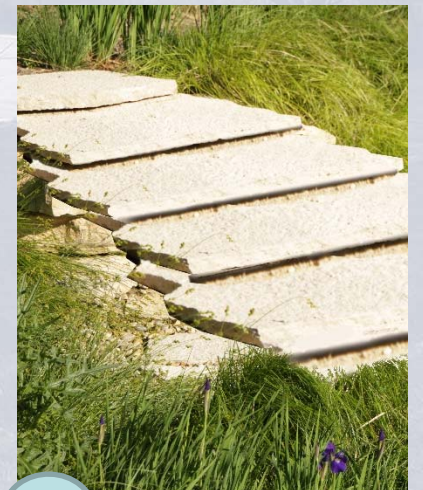
PERENNIALS & GRASSES	BOTANICAL NAME / COMMON NAME	CONT	CAL	QTY
ac	Allium cernuum / Nodding Pink Onion	Cont.	4" Pot	65
ep	Echinacea pallida / Pale Purple Coneflower	Cont.	4" Pot	44
sh	Sporobolus heterolepis / Prairie Dropseed	Cont.	4" Pot	107



1 Maintain existing character of mowed bluegrass lawn and native canopy tree plantings along outside edge of Lot 130 and parkway between University Bay Drive and the Lakeshore Path

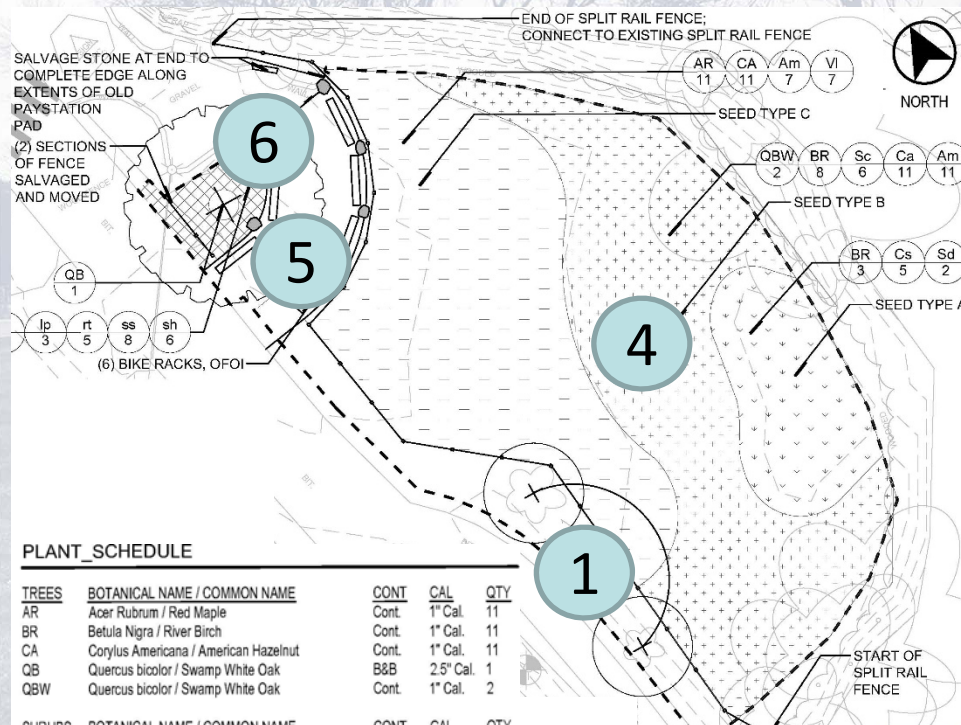


3 Plant parking lot islands with a simple palette of native perennials, grasses & native canopy trees



2 Plant bio- basin with native vegetated mat and "stone ladders" to convey water down from parking lot curb cuts down side slopes

Planting and Landscape Restoration – Lot 129



PLANT_SCHEDULE

TREES	BOTANICAL NAME / COMMON NAME	CONT	CAL	QTY
AR	Acer Rubrum / Red Maple	Cont.	1" Cal.	11
BR	Betula Nigra / River Birch	Cont.	1" Cal.	11
CA	Corylus Americana / American Hazelnut	Cont.	1" Cal.	11
QB	Quercus bicolor / Swamp White Oak	B&B	2.5" Cal.	1
QBW	Quercus bicolor / Swamp White Oak	Cont.	1" Cal.	2

SHRUBS	BOTANICAL NAME / COMMON NAME	CONT	CAL	QTY
Am	Aronia melanocarpa / Glossy Black Chokeberry	Cont.	2 Gal.	18
Ca	Cornus amomum / Silky Dogwood	Cont.	2 Gal.	11
Cs	Cornus sericea / Redosier Dogwood	Cont.	2 Gal.	5
Sc	Sambucus canadensis / American Elderberry	Cont.	2 Gal.	6
Sd	Salix discolor / Pussy Willow	Cont.	2 Gal.	2
VI	Viburnum lentago / Nannyberry Viburnum	Cont.	2 Gal.	7

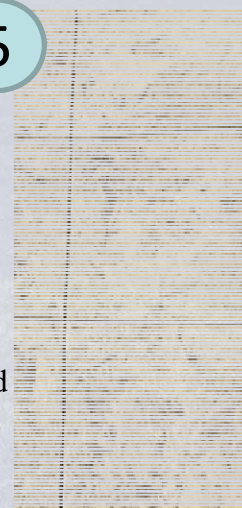
PERENNIALS & GRASSES	BOTANICAL NAME / COMMON NAME	CONT	CAL	QTY
ac	Allium cernuum / Nodding Pink Onion	Cont.	4" Pot	8
al	Aster laevis / Smooth Aster	Cont.	4" Pot	3
bg	Bouteloua gracilis / Blue Grama	Cont.	4" Pot	6
cl	Coreopsis lanceolata / Lanceleaf Coreopsis	Cont.	4" Pot	3
ep	Echinacea pallida / Pale Purple Coneflower	Cont.	4" Pot	5

Li	Liatris pycnostachya / Prairie Blazingstar	Cont.	4" Pot	3
Ru	Rudbeckia trilobal / Brown Eyed Susan	Cont.	4" Pot	3
Sc	Schizachyrium scoparium / Little Bluestem	Cont.	4" Pot	3
Sp	Sporobolus heterolepis / Prairie Dropseed	Cont.	4" Pot	3

Utilize colored and texture concrete for bike parking surface to blend with adjacent limestone surfacing and tie into The Preserve aesthetic



4 Remove limestone and asphalt surfacing materials. Retain native subsoils and restore ground layer with seed mixes of native sedges and forbs. Plant wet-tolerant and aggressive native trees and shrubs with dense spacing to compete with invasives.



6 Include new sections of split rail fence and expanded native perennial display gardens at bike parking and entrance