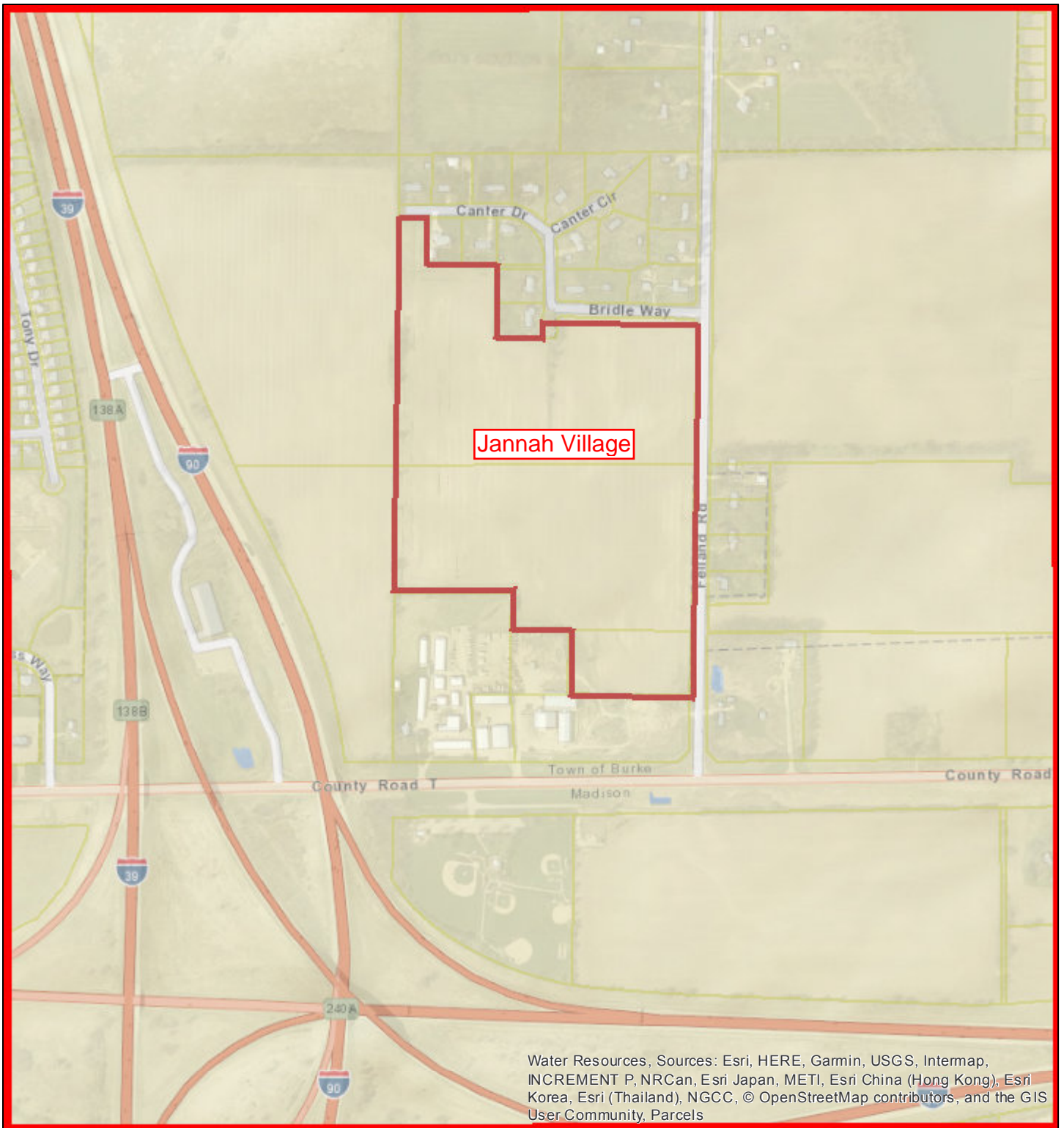


# Felland Road Development - JANNAH Village - Vicinity Map

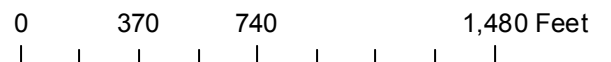


May 15, 2018

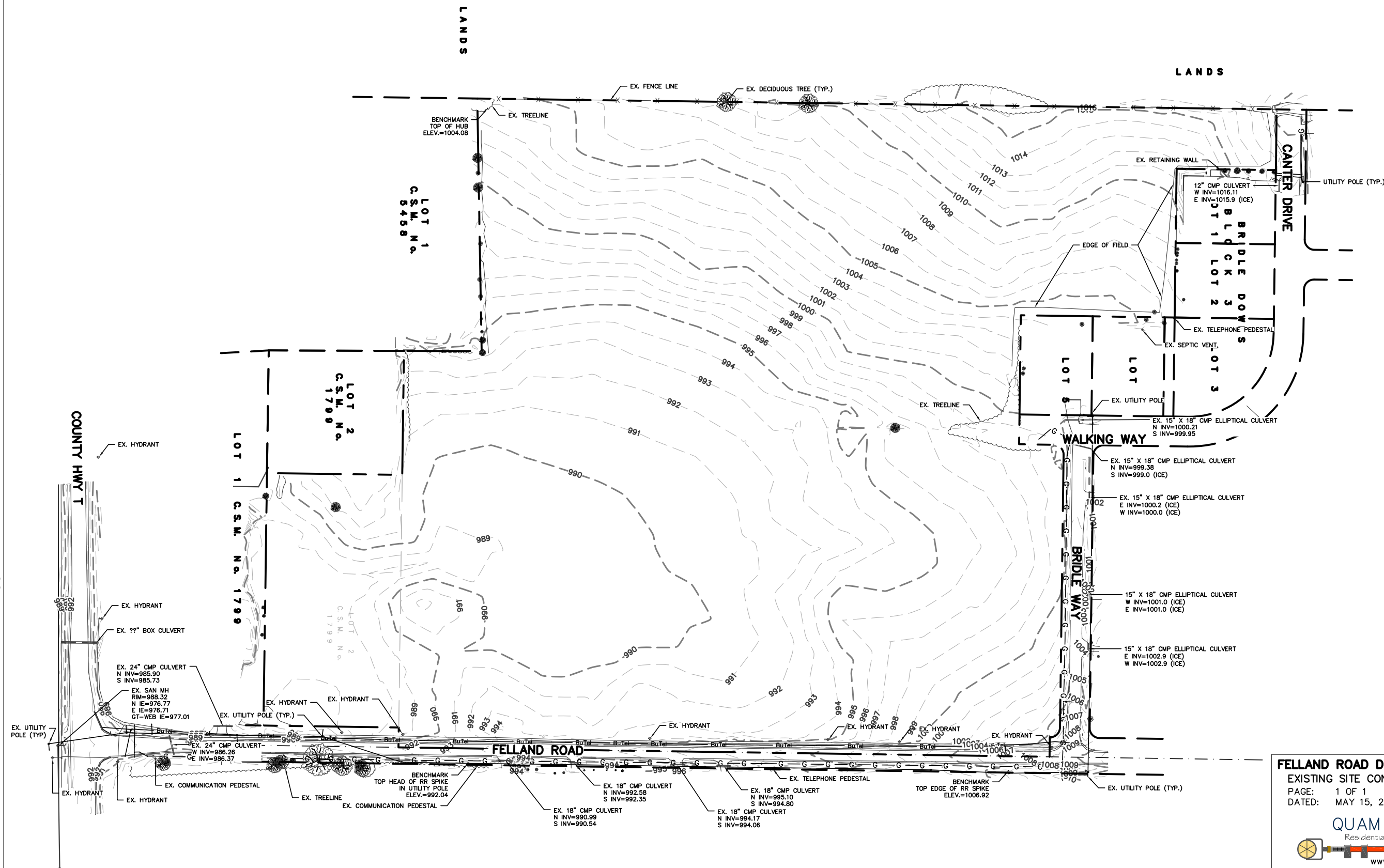
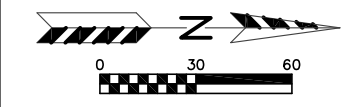
1 inch = 600 feet

## Rivers and Streams

- Perennial Stream; Hidden Perennial Stream
- - - Intermittent Stream; Hidden Intermittent Stream
- - - Constructed Drainage
- Tax Parcels



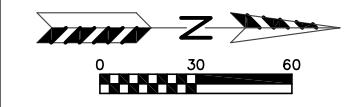
Water Resources, Sources: Esri, HERE, Garmin, USGS, Intermap, INCREMENT P, NRCan, Esri Japan, METI, Esri China (Hong Kong), Esri Korea, Esri (Thailand), NGCC, © OpenStreetMap contributors, and the GIS User Community, Parcels



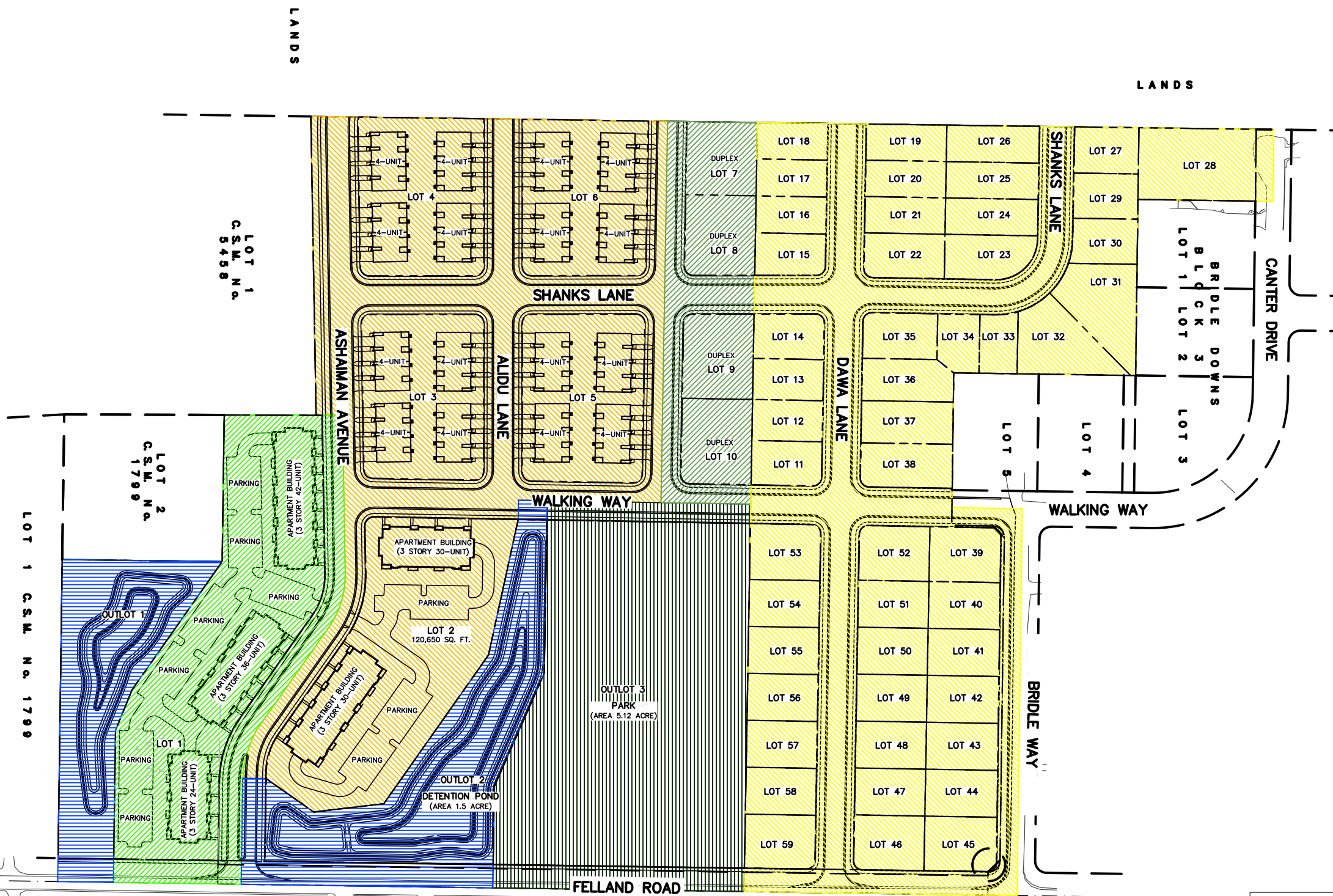
**FELLAND ROAD DEVELOPMENT**  
EXISTING SITE CONDITION PLAN  
PAGE: 1 OF 1  
DATED: MAY 15, 2018

**QUAM ENGINEERING, LLC**  
Residential and Commercial Site Design Consultants  
www.quamengineering.com  
4604 Siggelkow Road, Suite A - McFarland, Wisconsin 53558  
Phone (608) 838-7750; Fax (608) 838-7752

INTERSTATE 94/90



COUNTY HWY T



**ZONING LEGEND**

[Yellow hatched box]	SRC1
[Green hatched box]	SRC3
[Orange hatched box]	SRV2
[Light green hatched box]	TRU1
[Blue hatched box]	PARK
[Blue wavy line]	STORMWATER

**FELLAND ROAD DEVELOPMENT**

ZONING AMENDMENT MAP  
 PAGE: 1 OF 1  
 DATED: MAY 15, 2018

**QUAM ENGINEERING, LLC**  
 Residential and Commercial Site Design Consultants

www.quamengineering.com  
 4604 Siggelkow Road, Suite A - McFarland, Wisconsin 53558  
 Phone (608) 838-7750; Fax (608) 838-7752