



NW CORNER  
SEC 21, T7N-R8E



CSM 9672  
1

CSM 9672  
2

SCHEWE RD TO BE DISCONTINUED  
SEE EXHIBITS C & D

WHITE FOX LN

S 89° 57' 48" E  
66.03'

49.52'

**AREA "C" - TO BE DISCONTINUED  
PART OF 66' SCHEWE RD RIGHT-  
OF-WAY PER CSM 6407**

66'

CSM 7671  
1

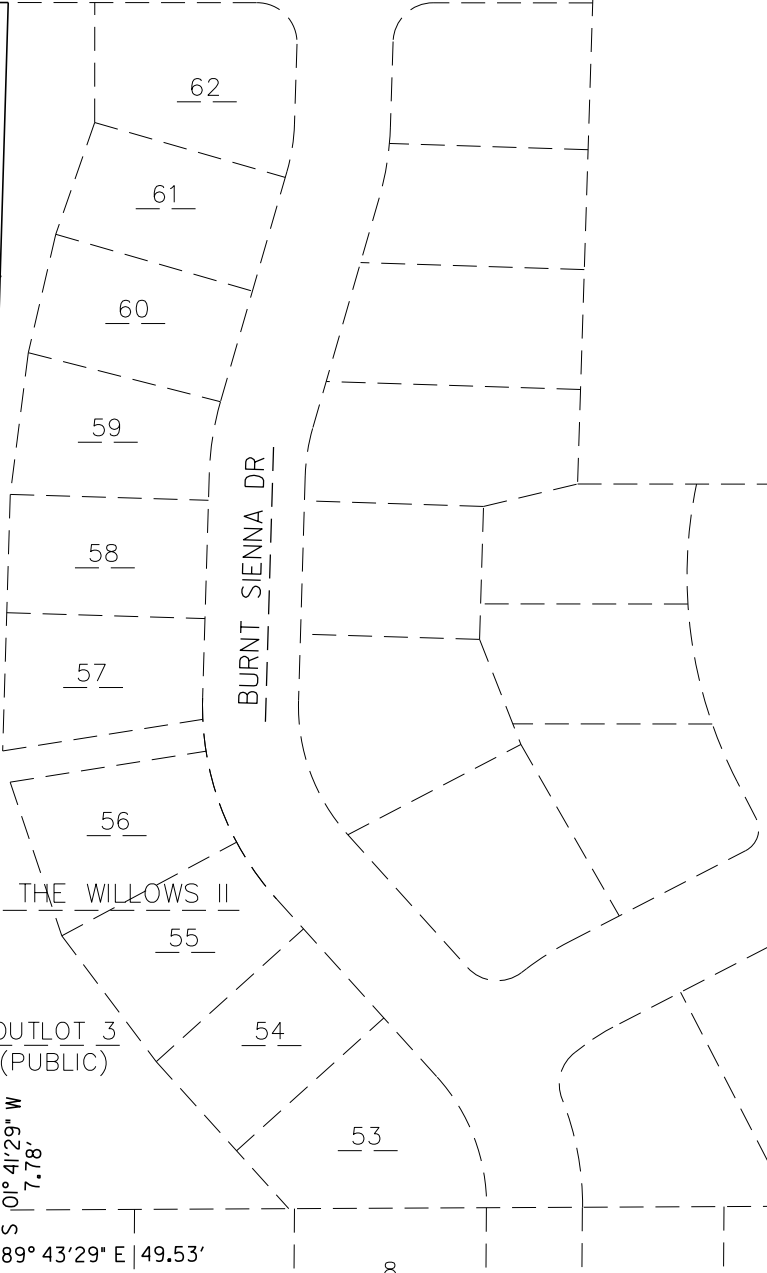
**AREA "B" - TO BE DISCONTINUED  
PART OF 49.5' WIDE ORDER LAYING  
OUT HIGHWAY (SCHEWE RD) ON JUNE  
3, 1885 (PG 169-171 OF COUNTY  
HIGHWAY ROADS, DANE COUNTY  
SURVEYOR'S OFFICE)**



(N 01° 40' 44" E)  
N 01° 41' 29" E 755.79'

S 01° 41' 29" W 783.94'  
S 01° 41' 29" W 755.43'

BURNT SIENNA DR



OUTLOT 3  
(PUBLIC)

S 89° 43' 29" W  
66.04'

S 01° 41' 29" W  
7.78'

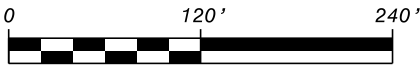
N 89° 43' 29" E 49.53'

POB

39.55'

6.08'

SCALE: 1"=120 FEET



GRAPHIC SCALE (feet)

# SHEET 2 OF 2

# EXHIBIT A

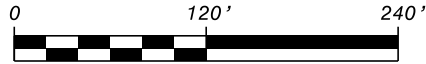
**AREA "B" - TO BE DISCONTINUED PART OF 49.5' WIDE ORDER LAYING OUT HIGHWAY (SCHEWE RD) ON JUNE 3, 1885 (PG 169-171 OF COUNTY HIGHWAY ROADS, DANE COUNTY SURVEYOR'S OFFICE)**



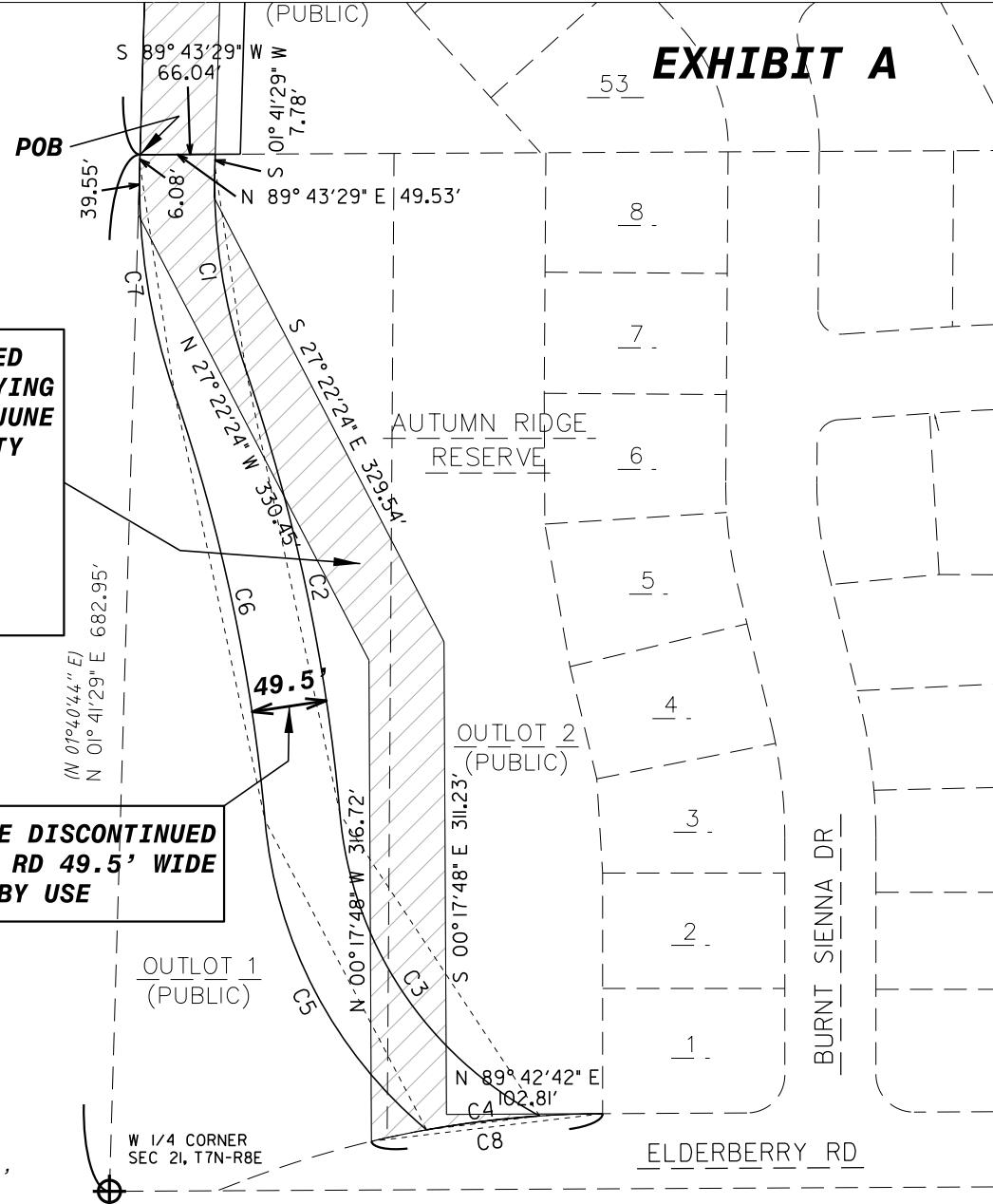
**AREA "A" - TO BE DISCONTINUED EXISTING SCHEWE RD 49.5' WIDE PUBLIC HIGHWAY BY USE**



SCALE: 1"=120 FEET



GRAPHIC SCALE (feet)



CURVE	ARC	CENTRAL ANGLE	RADIUS	CHORD BEARING	CHORD LENGTH
C1	135.54'	20° 34' 17"	377.50'	S 08° 35' 39" E	134.81'
C2	300.58'	13° 48' 19"	1247.50'	S 11° 58' 38" E	299.85'
C3	248.49'	56° 50' 09"	250.50'	S 33° 29' 33" E	238.43'
C4	75.10'	06° 22' 46"	674.50'	S 83° 00' 12" W	75.06'
C5	235.73'	45° 01' 18"	300.00'	N 27° 35' 08" W	229.71'
C6	288.65'	13° 48' 19"	1198.00'	N 11° 58' 38" W	287.95'
C7	153.31'	20° 34' 17"	427.00'	N 08° 35' 39" W	152.49'
C8	153.63'	13° 03' 02"	674.50'	S 83° 11' 11" W	153.30'