



# MADISON METRO TRANSIT

MFS 1101 Facility Study

Madison, WI



Mead&Hunt

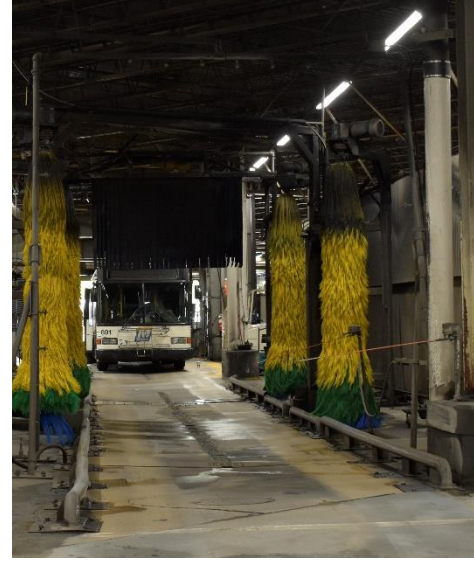
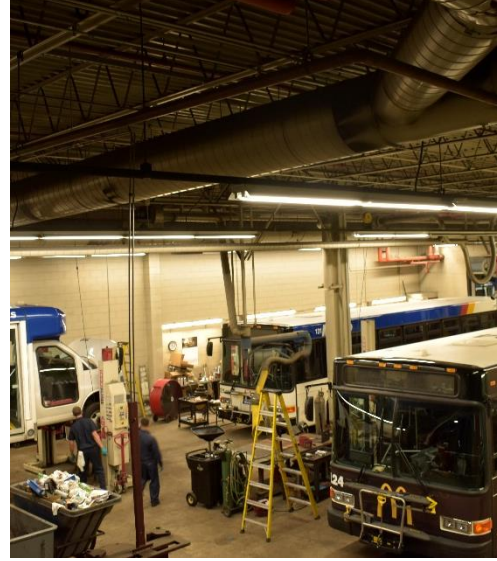
# INTRODUCTIONS

- Madison Metro Transit
- City of Madison



Mead&Hunt

# EXISTING SPACE



Mead&Hunt



# EXISTING SPACE



Mead&Hunt



# Core Goals of the Concept Design

---

- Maintain functions generally **within the existing footprint**.
- Provide a **20-year solution** for the site.
- **Improve workflows** by reorganizing functional adjacencies.
- **Identify upgrade requirements** for utilities and life safety.
- **Staff safety and retention** are key priorities.
- Reorganize bus traffic flow for **Left-Hand turns** in lieu of current Right-Hand Turns for increased safety.
- **Decreased Maintenance** are values for the City.



# SUMMARY OF INTERVIEWS + QUESTIONNAIRES

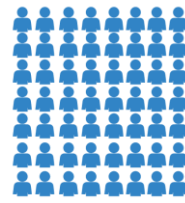


58

survey  
reponses



feed back



56

interviewed

exercise  
restrooms sleep  
safety lounge kitchen  
storage security privacy quiet  
communication space parking  
ergonomics  
heat

focal areas



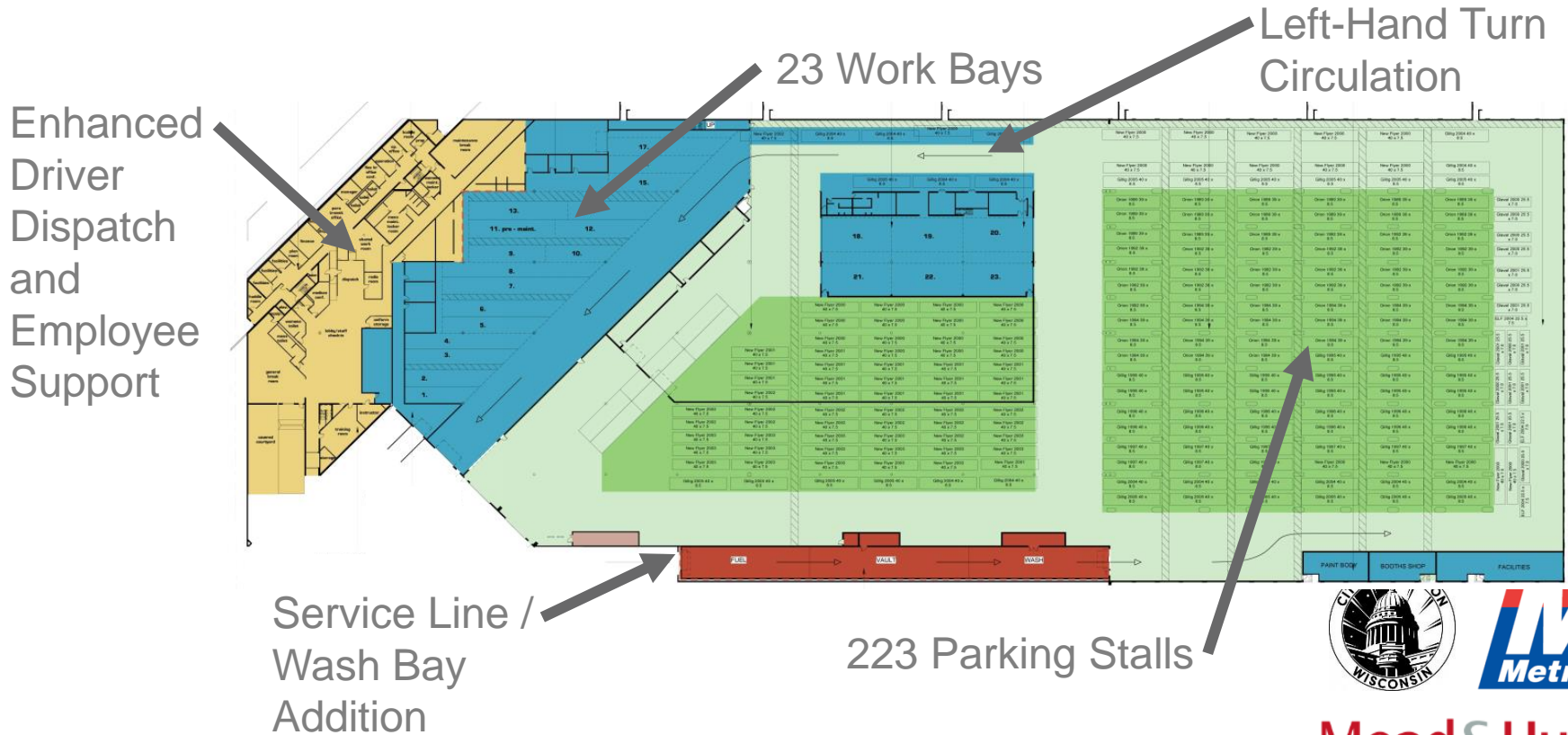
security  
ventilation  
lockerrooms  
toilets  
organization  
safety  
hoists

ventilation + safety + restrooms



Mead & Hunt

# Preferred Remodeling Option 1



Mead & Hunt



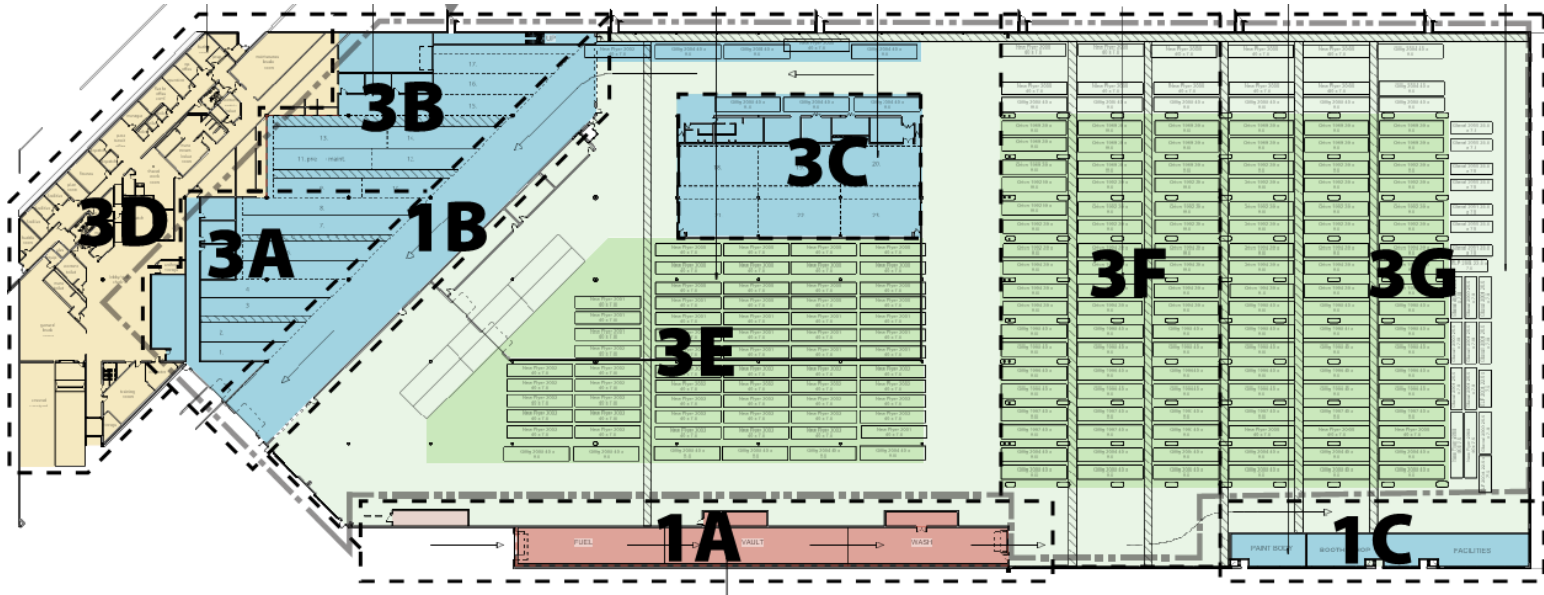
# Capital Budget/Phasing Strategy Considerations

---

- Ventilation + Safety + Restrooms Priorities
- Critical Paths for System Failure and Life Safety
- On-going Bus Service/Operations maintainable through Construction
- Operational Efficiency
- Each Phase is a Stand-Alone Project
- Five-Seven Year Overall Timeline
- 2018 Roof Replacement in the works



# Phasing Plan



**2** – BUILDING WIDE HVAC

**4** – BUILDING WIDE MAINTENANCE



Mead&Hunt

# Construction Timelines & Capital Budget Estimates\*

\*2021 can be further phased

Year	Phase		Design	Construction	Equipment
2018	1	Design: Wash/Service Line	\$458,878		
2019	1	Wash/Service Line		\$4,681,269	
	1	Wash/Service Line Equipment			\$1,260,173
	2	Design: HVAC	\$711,144		
2020	2	HVAC		\$7,227,288	
	3	Design: Interior Renovations	\$2,438,010		
2021	3	Interior Renovations		\$24,755,843*	
	3	Renovation Eqpmt & Furniture			\$2,738,260
	4	Design: Ongoing Maintenance	\$977,083		
2022	4	Ongoing Maintenance		\$9,911,304	
TOTAL			\$4,126,238	\$46,575,705	\$3,998,434

# Evolving Needs

---

- 2020 Electric Bus Grant Award
- Discussions with MGE – regarding Photovoltaic





# DISCUSSION + QUESTIONS

- Questions
- Comments



Mead&Hunt