



Sustainable Madison Committee

Tree Subcommittee Recommendations

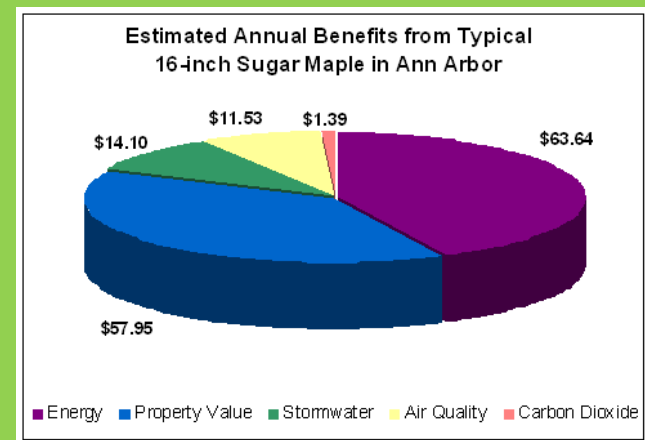
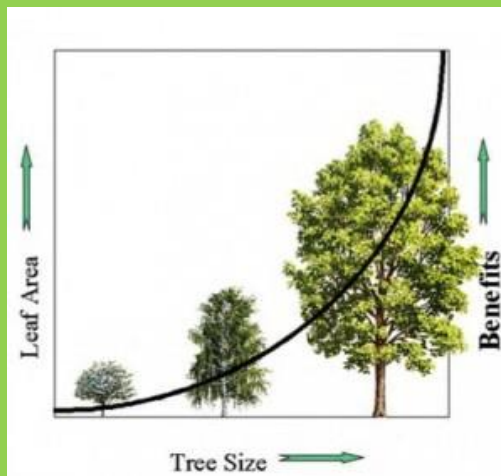
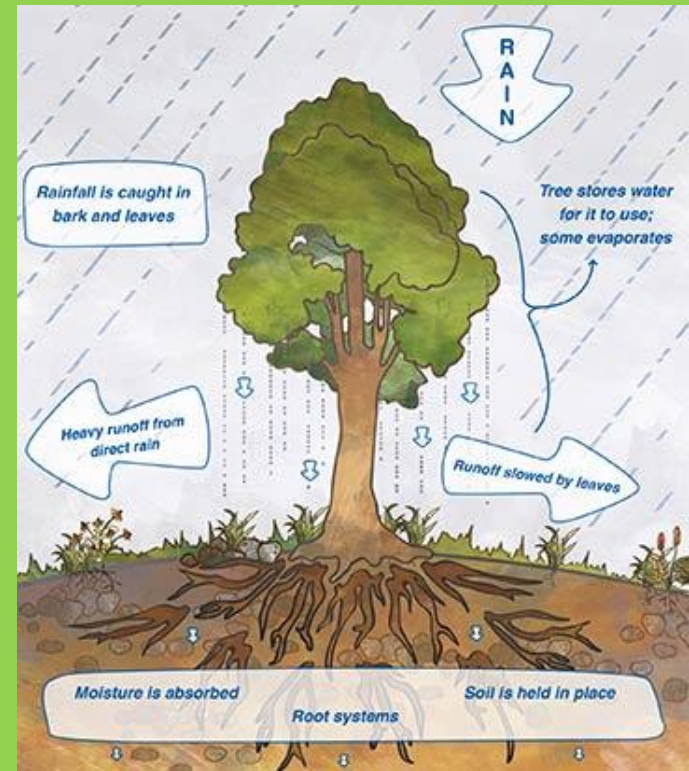
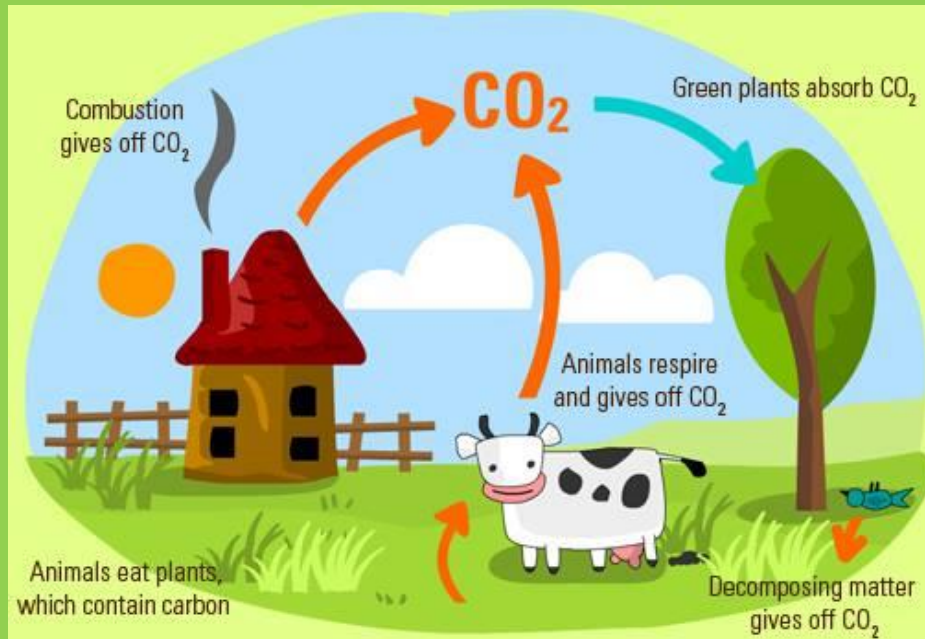
Tree Goals from Madison's Sustainability Plan - 2012

- ❖ Preserve and expand urban forest resources.
- ❖ Create a comprehensive tree program, with tree maintenance, tree preservation ordinance, and species variation.
- ❖ Minimize loss of tree cover and green space in public rights of way
- ❖ Create a policy to facilitate underground placement of power lines and overhead wires.
- ❖ Promote tree planting by residents to complement municipal planting through a well-planned and systematic program, including education.

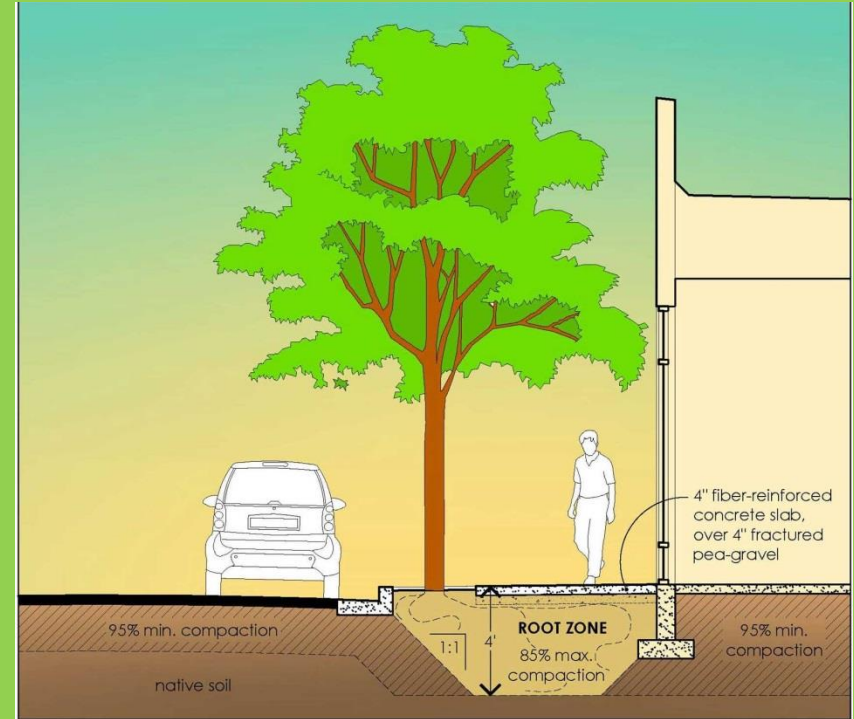
Many Tree Benefits



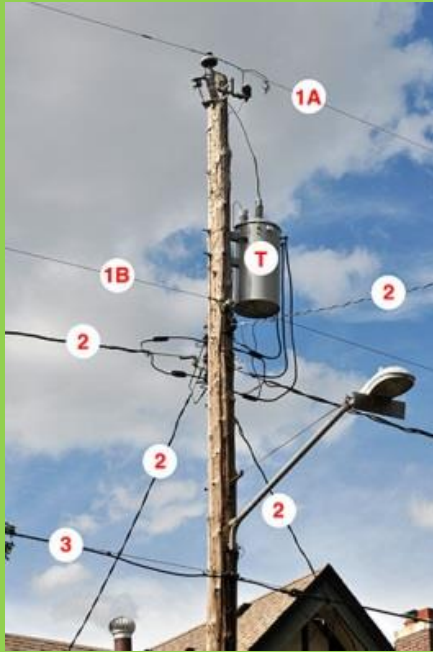
Energy and Water Benefits



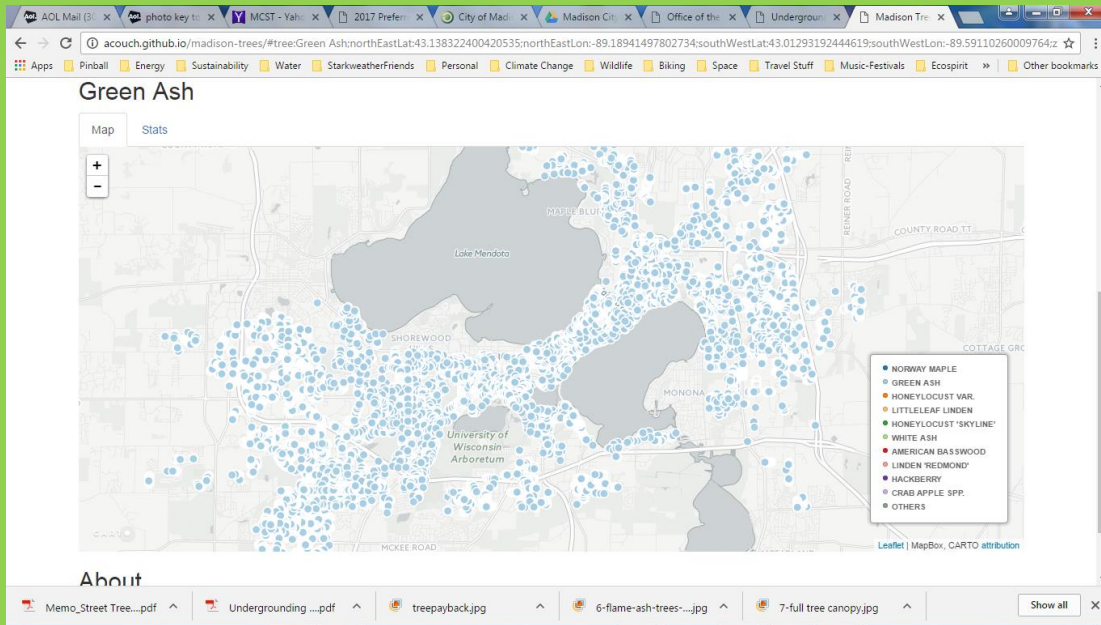
Low Priority in Construction



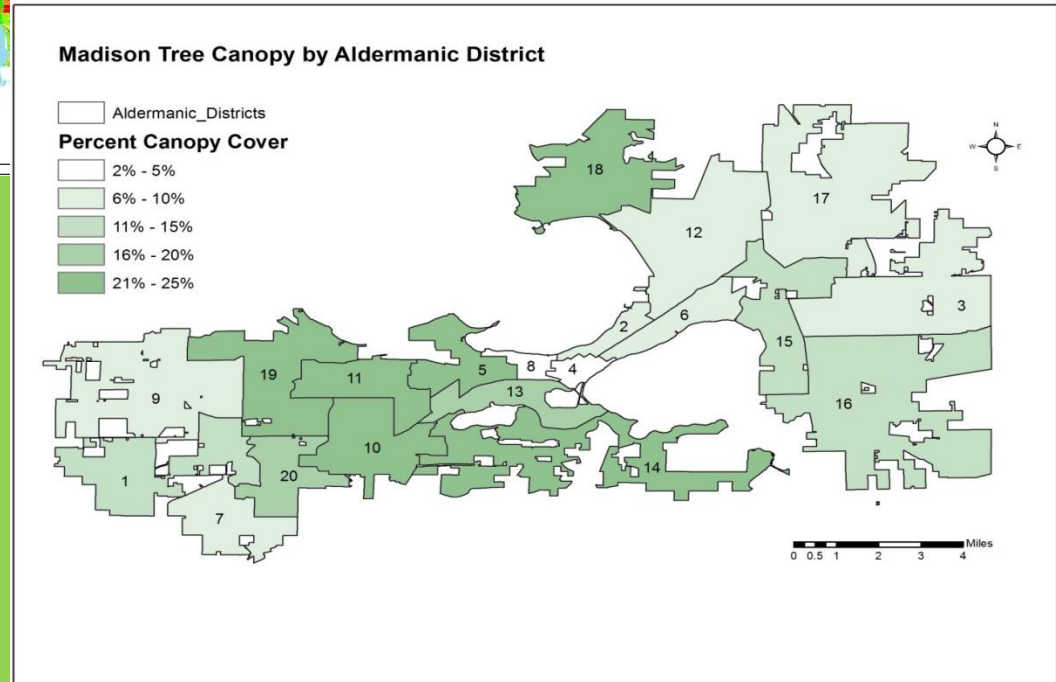
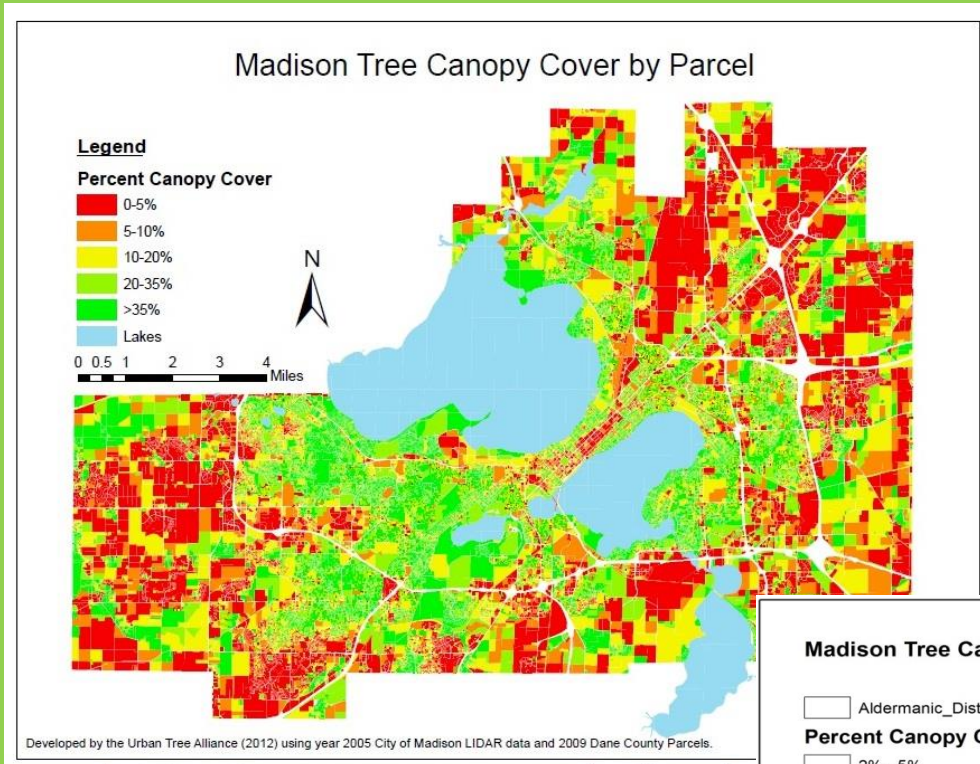
Overhead Power Lines



Emerald Ash Borer



No Citywide Canopy Goal



Develop Urban Forestry Master Plan

Some Major Elements

- ❖ Institute procedures for priority treatment of existing and new trees in planning and performing street and sidewalk installation/reconstruction and all types of developments, including providing appropriate soil, water and space for healthy trees.
- ❖ Review zoning code to optimize tree placement and survival, including consideration of building set-backs, auto/bike parking, fire access and solar arrays.
- ❖ Develop and adopt a Canopy Coverage Goal for the City including public and private canopy trees.
- ❖ Develop a Tree Assessment and Tracking System to accurately track all terrace and Park trees (in open spaces) and provide regular reports on the state of our publically-owned trees.
- ❖ Integrate street trees into the stormwater infrastructure and Complete Streets objectives of the City, including clear guidelines for trimming and maintenance of trees under utility lines.
- ❖ Support programs that assist planting trees on private property such as the [Madison Canopy Project](#) operated by the Urban Tree Alliance.
- ❖ Increase resident involvement in projects that expand or maintain the urban forest, such as the Parks Adopt-A-Tree project, our current new-tree-watering program, [Greening Milwaukee](#) and [Chicago TreeKeepers](#).

Revise portions of the Emerald Ash Borer Response Plan

Eliminate the requirement that all Ash trees under power lines be removed to align the Plan with current Forestry practice. The criteria for Ash trees should be the same as for other trees under power lines – remove them when their health or structure is determined to pose a threat, not because of the location in which they are planted.

Promote participation in the Parks' Adopt-A-Park Tree program through 2017.



Underground Power Lines

Consider Partial Undergrounding Pilot

Sec. 19.16

ELECTRICAL CODE

19.16 UNDERGROUND UTILITY ENTRANCE FACILITIES.

- (1) Purpose. The Common Council of the City of Madison does hereby declare it to be the public policy of the City of Madison to favor underground electrical and communications facilities. The exercise of police power to implement this public policy is based on the public benefit received including (but not limited to) the following reasons:
 - (a) Clearing scenic views;
 - (b) Improving civic appearance;
 - (c) Removing safety hazards which are a danger to pedestrians and motorists;
 - (d) Overcoming the threat of temporary loss of service due to high winds and ice conditions;
 - (e) Eliminating damage to overhead equipment by wildlife;
 - (f) Eliminating damage to wildlife by overhead equipment;
 - (g) Eliminating trimming of street trees required to prevent damage to overhead wires.

This ordinance is adopted to facilitate the orderly replacement and/or transfer from overhead facilities consistent with desirable aesthetic goals and sound economic practices. The Common Council of the City of Madison finds the utilities and other entities furnishing major utility services and other services transmitted by wire or coaxial cable have previously adopted policies of converting from overhead service to underground service.

- (2) Definitions. In this section the following definitions shall apply:
 - (a) The term “underground entrance facilities” shall mean the conductors, cable, conduit and/or equipment necessary to transmit electrical or communications energy from the aerial or underground distribution system of the supplier to the main disconnect, junction or metering equipment on the customer's premises and shall include all electric

Thanks to those who Helped!

Sustainable Madison Committee – Tree Subcommittee

Alder David Ahrens

Lance Green

Michael Vickerman

Jesse Shields



Special Thanks to:

Marla Edys, Charles Romines – Parks Division

Madison Canopy Street Trees Group – Leslie Schroeder, T R Loon, Gary Tipler

Karl van Lith – City Staff to SMC

Urban Tree Alliance – Jeremy Kane

UW Landcape Department - Dr John Harrington

Tyler Lark