

# BOARD MEETING UPDATE



12/07/2017



# CURRENT TIMELINE

# PINNEY NEIGHBORHOOD LIBRARY **DRAFT** SCHEDULE

Task Name	Duration	Start	Finish	Predecessors	1st Quarter	2nd Quarter	3rd Quarter	4th Quarter	1st Quarter	2nd Quarter	3rd Quarter	4th Quarter	1st Quarter	2nd Quarter	3rd Quarter	4th Quarter
					Jan	Feb	Mar	Apr	May	Jun	Jul	Aug	Sep	Oct	Nov	Dec
<b>Step 4 - Design Development</b>	<b>13 wks</b>	<b>Mon 11/20/17</b>	<b>Fri 2/16/18</b>													
4.1 A/E Produces DDs	11 wks	Mon 11/20/17	Fri 2/2/18													
4.2 City/Library DD Review	2 wks	Mon 2/5/18	Fri 2/16/18	2												
4.3 DD Cost Estimate	2 wks	Mon 2/5/18	Fri 2/16/18	2												
<b>Step 5 - Construction Documents</b>	<b>13 wks</b>	<b>Mon 2/19/18</b>	<b>Fri 5/18/18</b>	<b>3</b>												
5.1a A/E Produces CDs	10 wks	Mon 2/19/18	Fri 4/27/18	3												
5.2a City CD Review	1 wk	Mon 4/30/18	Fri 5/4/18	6												
5.2b State DSPS Review/Approval	1 wk	Mon 4/30/18	Fri 5/4/18	6												
5.2c BPW Approval of Plans/Specs	0 wks	Wed 5/16/18	Wed 5/16/18	6												
5.3 AE Completes Bid Verification	1 wk	Mon 5/7/18	Fri 5/11/18	7												
5.4 City/AE Bid Verification Review	1 wk	Mon 5/14/18	Fri 5/18/18	10												
<b>Step 6 - Bidding + Contract</b>	<b>13 wks</b>	<b>Mon 8/6/18</b>	<b>Fri 11/2/18</b>	<b>11</b>												
6.1 Bid Advertisement	6 wks	Mon 8/6/18	Fri 9/14/18	11												
6.2 DCR/AA SBE Review	1 wk	Mon 9/17/18	Fri 9/21/18	13												
6.3 BPW Approval	1 wk	Mon 9/24/18	Fri 9/28/18	14												
6.4 CC Approval	2 wks	Mon 10/1/18	Fri 10/12/18	15												
6.5 Contract Routing	1 wk	Mon 10/15/18	Fri 10/19/18	16												
6.6 Start Work Letter	2 wks	Mon 10/22/18	Fri 11/2/18	17												
<b>Step 7 - Construction</b>	<b>39 wks</b>	<b>Tue 2/19/19</b>	<b>Mon 11/18/19</b>	<b>18</b>												
7.2 Construction - Construction	33 wks	Tue 2/19/19	Mon 10/7/19	18												
7.3 Construction - Furn/Shelve Install + Mov	6 wks	Tue 10/8/19	Mon 11/18/19	20												

Task Name	Duration	Start	Finish	Predecessors
<b>Step 4 - Design Development</b>	<b>13 wks</b>	<b>Mon 11/20/17</b>	<b>Fri 2/16/18</b>	
4.1 A/E Produces DDs	11 wks	Mon 11/20/17	Fri 2/2/18	
4.2 City/Library DD Review	2 wks	Mon 2/5/18	Fri 2/16/18	2
4.3 DD Cost Estimate	2 wks	Mon 2/5/18	Fri 2/16/18	2
<b>Step 5 - Construction Documents</b>	<b>13 wks</b>	<b>Mon 2/19/18</b>	<b>Fri 5/18/18</b>	<b>3</b>
5.1a A/E Produces CDs	10 wks	Mon 2/19/18	Fri 4/27/18	3
5.2a City CD Review	1 wk	Mon 4/30/18	Fri 5/4/18	6
5.2b State DSPS Review/Approval	1 wk	Mon 4/30/18	Fri 5/4/18	6
5.2c BPW Approval of Plans/Specs	0 wks	Wed 5/16/18	Wed 5/16/18	6
5.3 AE Completes Bid Verification	1 wk	Mon 5/7/18	Fri 5/11/18	7
5.4 City/AE Bid Verification Review	1 wk	Mon 5/14/18	Fri 5/18/18	10
<b>Step 6 - Bidding + Contract</b>	<b>13 wks</b>	<b>Mon 8/6/18</b>	<b>Fri 11/2/18</b>	<b>11</b>
6.1 Bid Advertisement	6 wks	Mon 8/6/18	Fri 9/14/18	11
6.2 DCR/AA SBE Review	1 wk	Mon 9/17/18	Fri 9/21/18	13
6.3 BPW Approval	1 wk	Mon 9/24/18	Fri 9/28/18	14
6.4 CC Approval	2 wks	Mon 10/1/18	Fri 10/12/18	15
6.5 Contract Routing	1 wk	Mon 10/15/18	Fri 10/19/18	16
6.6 Start Work Letter	2 wks	Mon 10/22/18	Fri 11/2/18	17
<b>Step 7 - Construction</b>	<b>39 wks</b>	<b>Tue 2/19/19</b>	<b>Mon 11/18/19</b>	<b>18</b>
7.2 Construction - Construction	33 wks	Tue 2/19/19	Mon 10/7/19	18
7.3 Construction - Furn/Shelve Install + Mov	6 wks	Tue 10/8/19	Mon 11/18/19	20



Studies the world of possibilities, set aspirations, and identifies the major ideas to move forward.



Blends the project goals, design thinking, and physical realities into spatial concepts.



Pushes the spatial concepts into reality by defining specific forms, materials, and building systems.



Develops detailed drawings that provide instruction about assembling the building's various components.



Delivers documents for selection of contractor and ensures original design vision is maintained during construction.

VISIONING AND AESTHETIC EXERCISES



LIBRARY STAFF AND CITY ENGAGEMENT



SPACE PROGRAM DEVELOPMENT



COMMUNITY INPUT AND INFORMATION GATHERING



ADJACENCY DIAGRAM EXPLORATION



FLOOR PLAN AND DESIGN DEVELOPMENT  
AND SYSTEMS INTEGRATION

A red brick wall with three arched windows. The leftmost window is partially covered by a mural of a hand holding a paintbrush. The other two windows are covered with white corrugated metal. The phrase "Together, We Create!" is painted in a black, gothic-style font across the middle of the wall, with a white background behind the text. The mural on the left shows a hand in a red sleeve holding a paintbrush, with pink and black paint visible on the wall behind it.

Together, We Create!

3 Early Literacy Discussions

4 Community Engagement Sessions

7 Library Staff Meetings

17 Core Team Design Meetings

# LIBRARY STAFF ENGAGEMENT

MADISON PUBLIC LIBRARY PINNEY



- PINNEY STAFF VISIONING
- PINNEY TOUR
- STAFF DISCUSSION OF CONCEPTS AND IDEAS
- MPL ALL STAFF WORKSHOP
- MPL BRANCH LIBRARIES TOURS
- CRPL BENCHMARKING TOUR
- CIRCULATION & COLLECTIONS
- ART STAKEHOLDERS

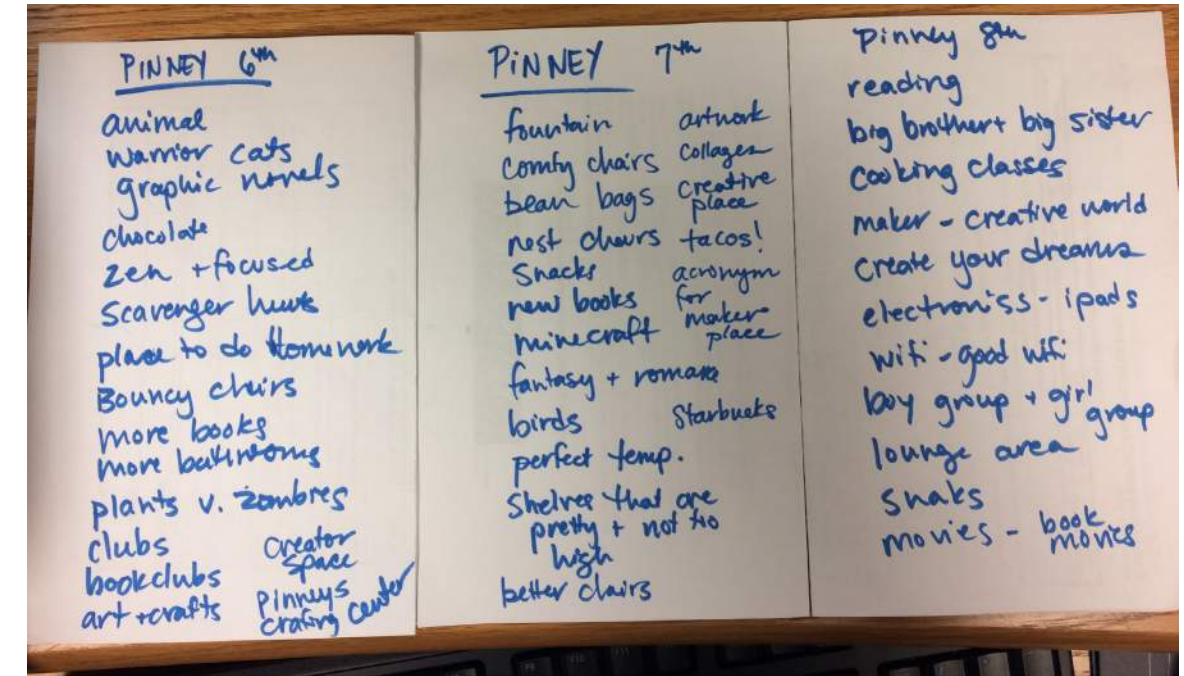
# COMMUNITY ENGAGEMENT

- COMMUNITY "MEET THE ARCHITECT"
- COMMUNITY STAKEHOLDERS INVOLVEMENT AND FEEDBACK
- COMMUNITY "OPEN HOUSE"
- COMMENT CARD REVIEW
- QUESTION BOARDS
- LOCAL MIDDLE SCHOOL FEEDBACK
- COMMUNITY UPDATE



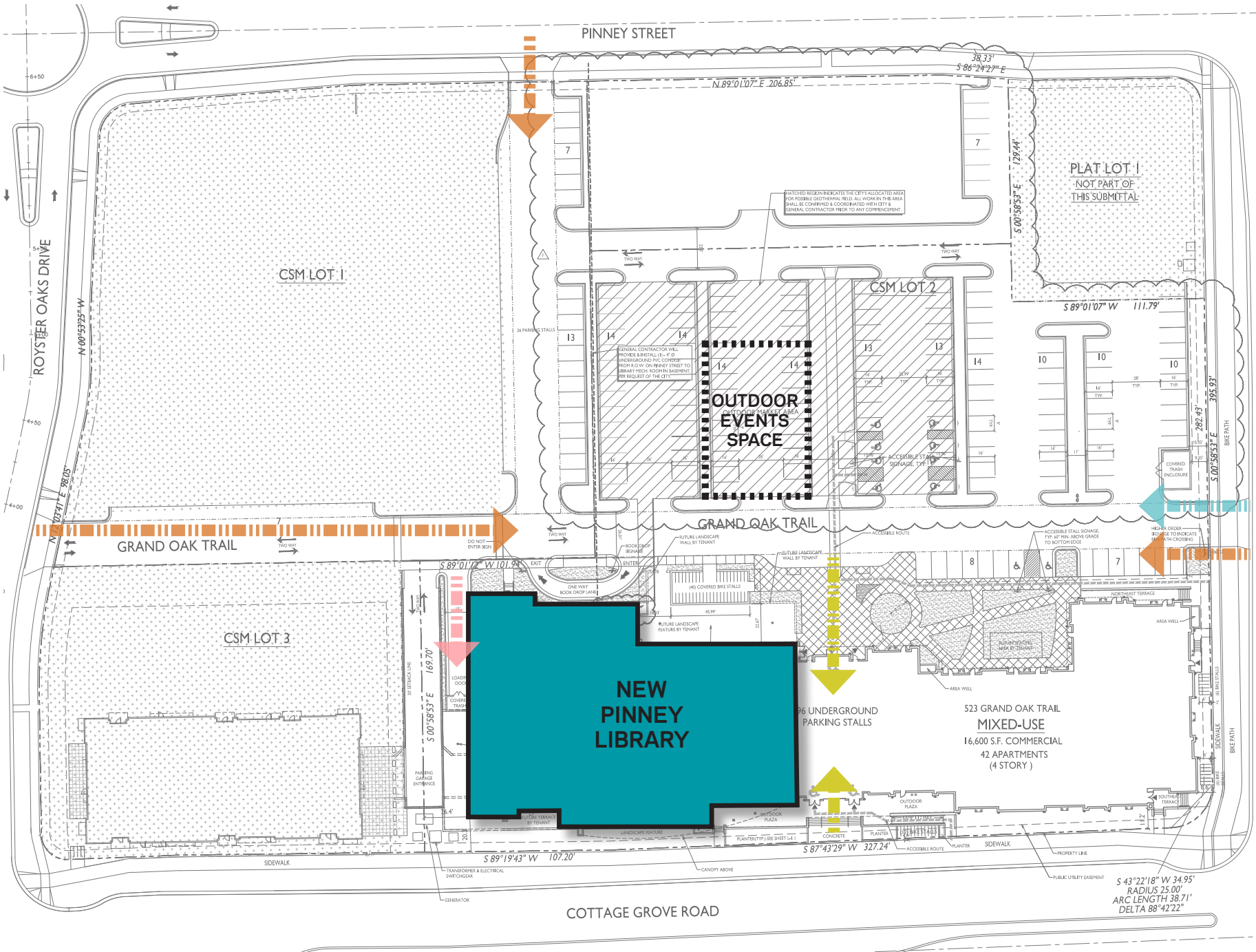
## MADISON PUBLIC LIBRARY PINNEY

### WHITEHORSE AND O'KEEFFE MIDDLE SCHOOL IDEAS

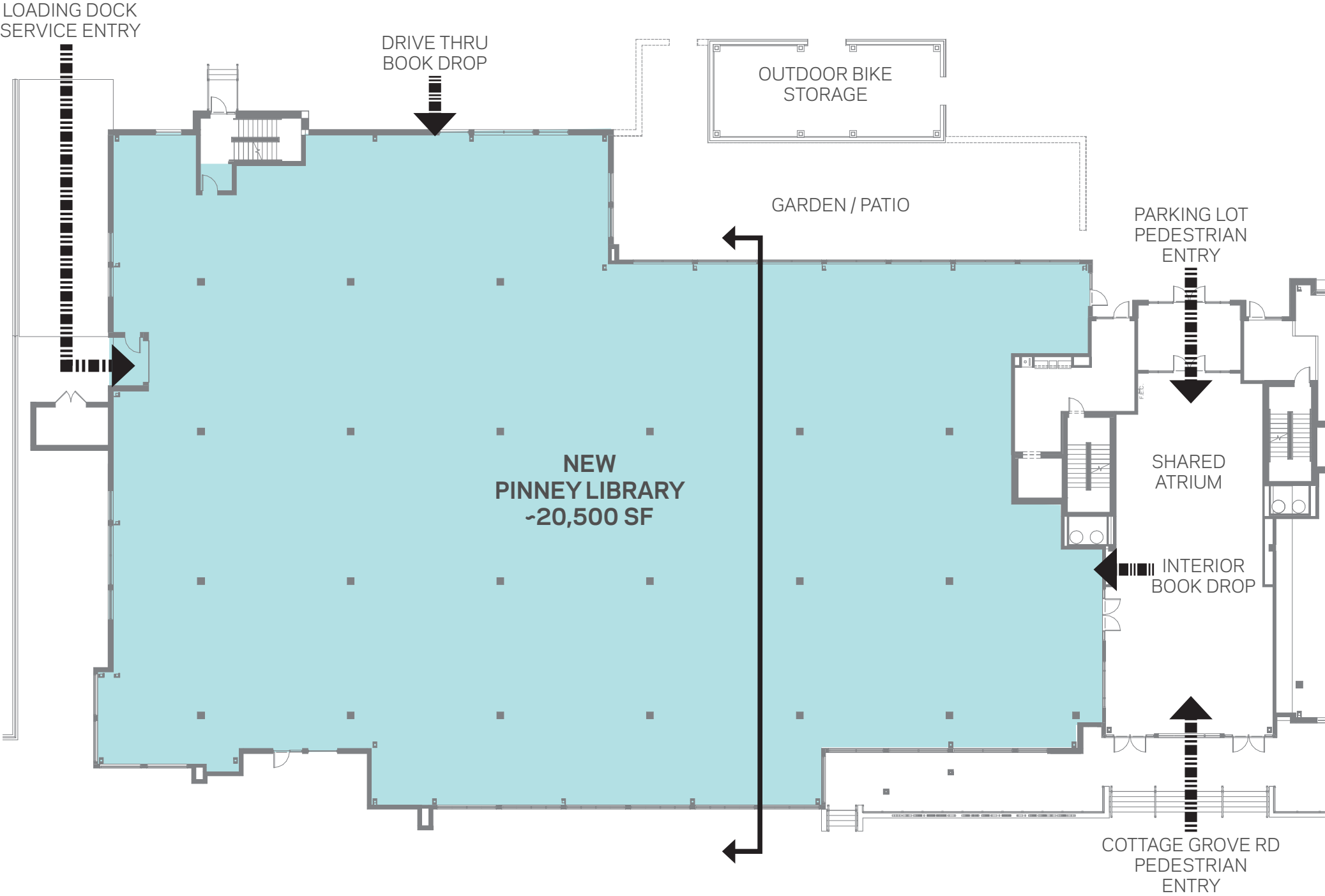


# BUILDING SITE AND SHELL

# SHELL SPACE FLOOR PLAN



# SHELL SPACE FLOOR PLAN





EXISTING BUILDING SOUTH ELEVATION - Knothe Bruce Architects

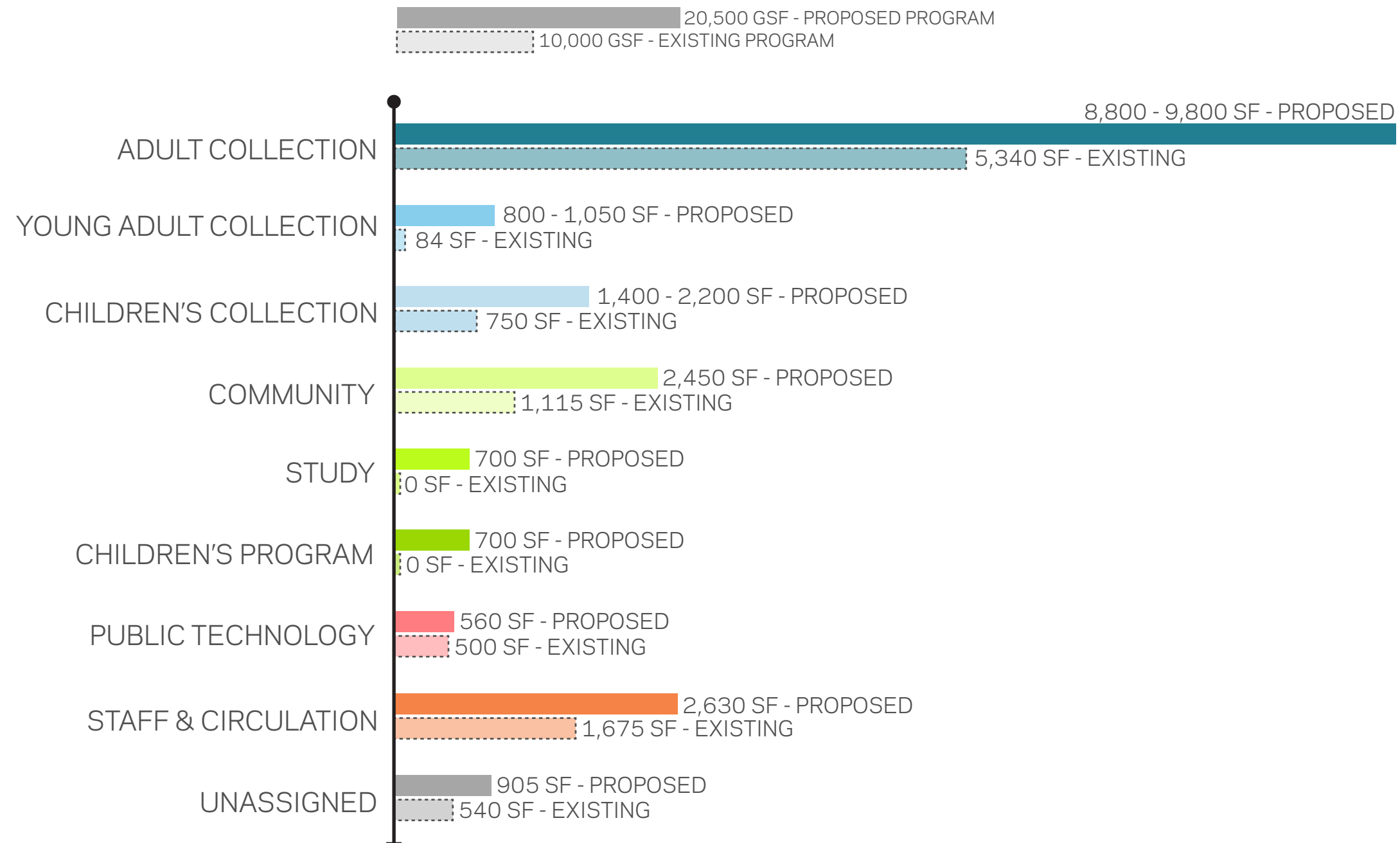


EXISTING BUILDING NORTH ELEVATION - Knothe Bruce Architects

# PINNEY LIBRARY PROGRAM

# NEW vs. OLD PROGRAM COMPARISON

MADISON PUBLIC LIBRARY PINNEY



# ADJACENCY DIAGRAMS

# ADJACENCY DIAGRAM EXPLORATION



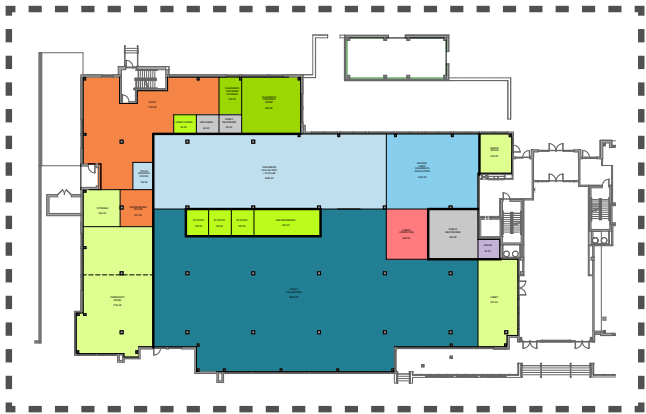
OPTION 1



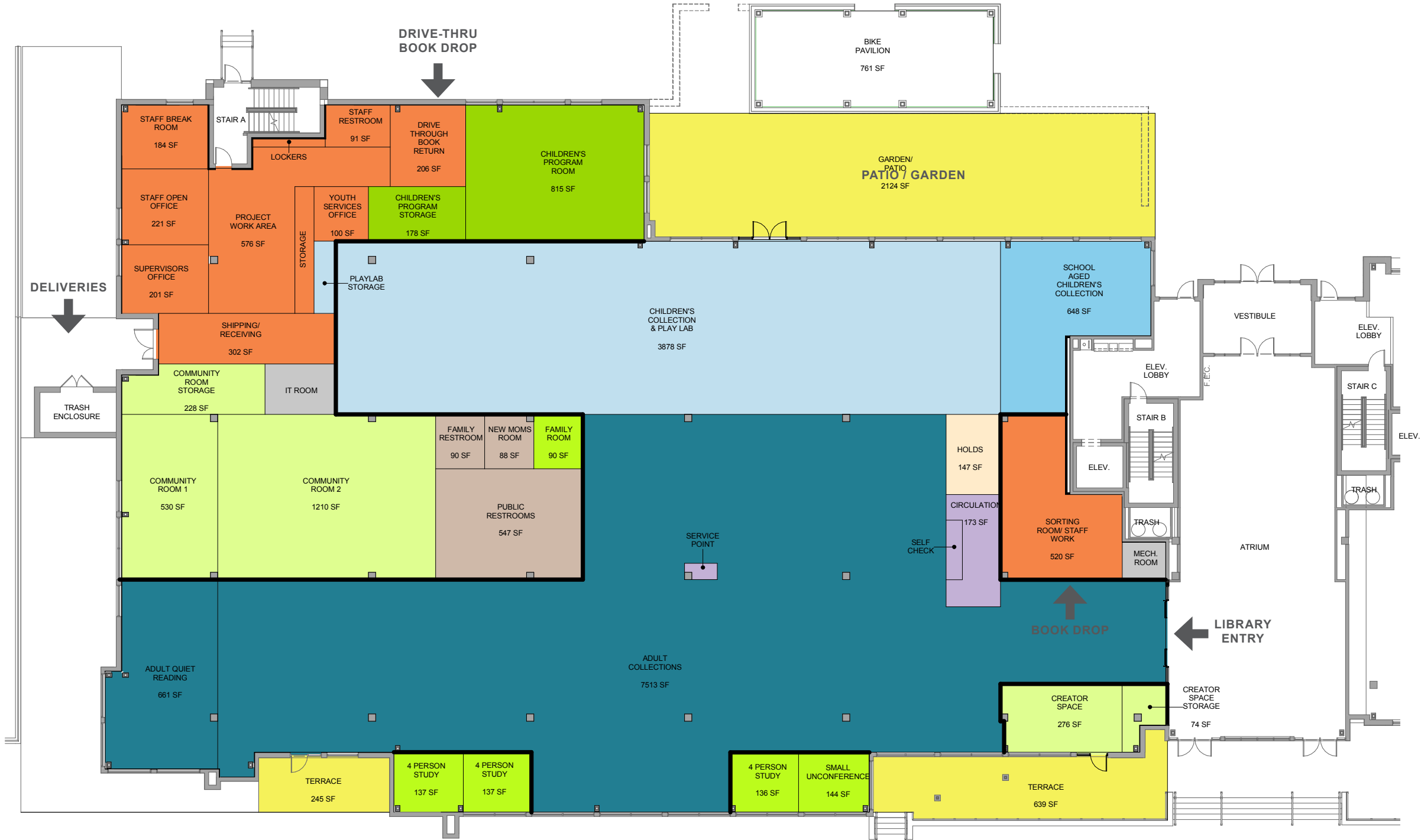
OPTION 2



OPTION 3

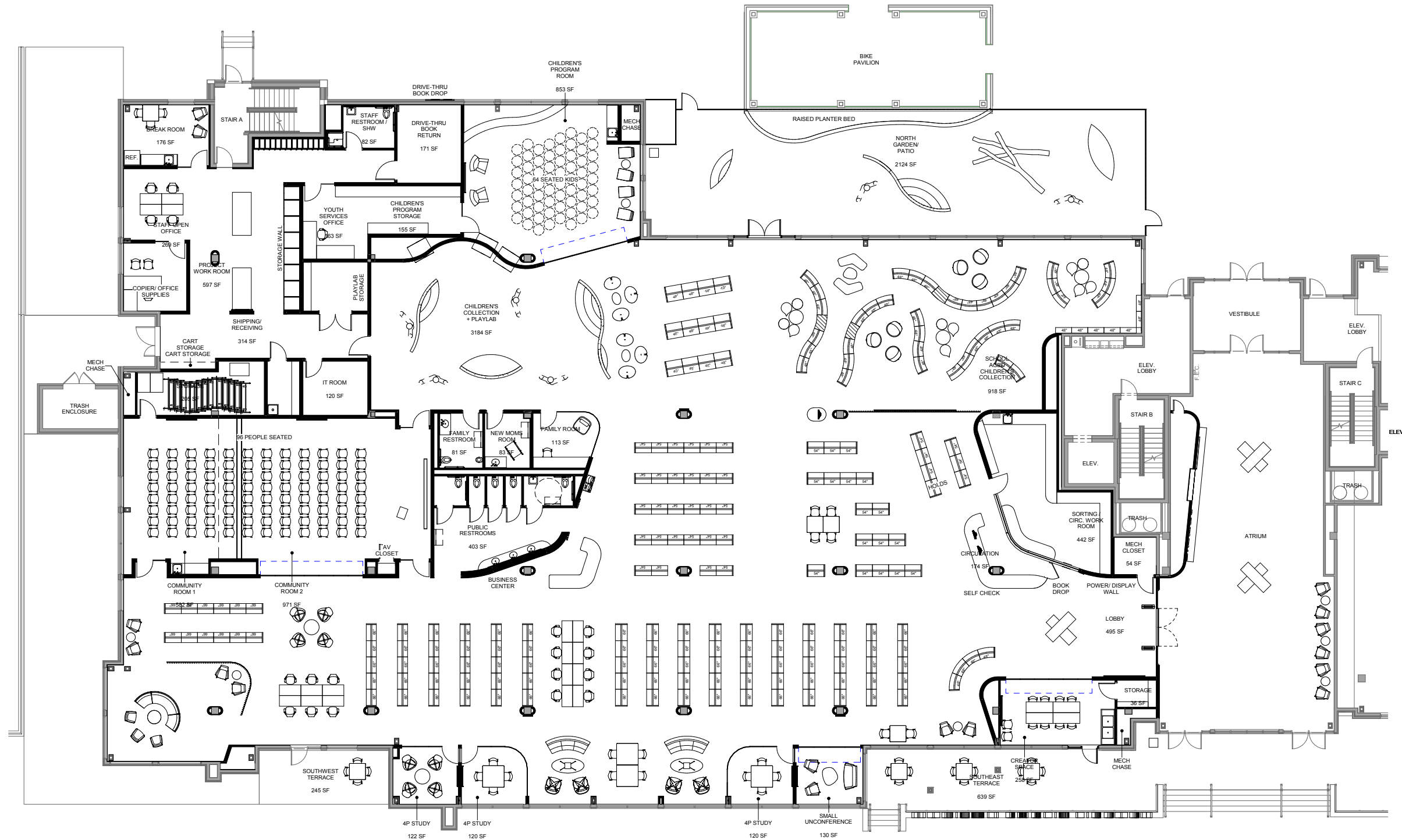


# RECONCILED ADJACENCY DIAGRAM



## ■ FLOOR PLAN

## MADISON PUBLIC LIBRARY PINNEY

















**QUESTIONS**



THANK YOU

