

FLOOR PLAN - SYMBOLS LEGEND

	NEW WALL PARTITION		DETAIL REFERENCE
	NEW DOOR		EQUIPMENT
	SECTION REFERENCE		WINDOW TYPE
	EXTERIOR ELEVATION		WALL-PARTITION TYPE
	INTERIOR ELEVATION		FLOOR DRAIN - PITCH FLOOR TO DRAIN
	FLOOR PLAN KEYNOTE		SEMI-RECESSED FIRE EXTINGUISHER
	ONE HOUR RATED FIRE PARTITION		
	ONE HOUR RATED FIRE BARRIER		
	TWO HOUR RATED FIRE BARRIER		

FLOOR PLAN - GENERAL NOTES

A. GYPSUM BOARD PARTITION DIMENSIONS ON FLOOR PLAN ARE BASED ON FACE OF STUD PARTITION TO FACE OF STUD PARTITION (NOMINAL).

B. VERIFY ALL DIMENSIONS AND CONDITIONS AT JOB SITE.

KEYNOTE LEGEND - FLOOR PLAN NOTES

NOTE #	FLOOR PLAN NOTE
200	ATTIC ACCESS HATCH/LADDER. REFER TO DETAIL A6410
201	CONCRETE FILLED STEEL BOLLARD. SEE DETAIL E64600
203	DOWNSPOUT TO CONCRETE SPLASH BLOCK

EXTERIOR WALL TYPE SCHEDULE

TYPE MARK	DESCRIPTION
2A.1	MASONRY VENEER STUD WALL CONSISTING OF 4" FACE BRICK, 1-3/8" AIR SPACE, BUILDING WRAP, 1" CONTINUOUS RIGID INSULATION ON 1/2" EXTERIOR GRADE PLYWOOD/SBS SHEATHING (VERIFY SHEATHING TYPE W/STRUCTURAL), 2 X 6 WOOD STUDS @ 16" OC WITH FULL THICKNESS BATT INSULATION, VAPOR RETARDER AND ONE LAYER 5/8" GYPSUM BOARD @ INTERIOR FACE. PROVIDE ADJUSTABLE MASONRY VENEER ANCHORS @ 16" OC EACH WAY, CAVITY DRAINAGE MATERIAL, FLASHING, CAVITY WEEPSVENTS @ 24" OC AND MASONRY EXPANSION AND CONTROL JOINTS. COMPARTMENTALIZE CAVITY AND PROVIDE CAVITY WEEPSVENTS AT TOP AND BOTTOM OF CAVITY. REFER TO DETAIL D3A600.
2D.1	FIBER CEMENT CLAD WALL CONSISTING OF FIBER CEMENT SIDING, 2" RIGID INSULATION, BUILDING WRAP ON 1/2" EXTERIOR GRADE PLYWOOD/SBS SHEATHING (VERIFY SHEATHING TYPE W/STRUCTURAL), 2 X 6 WOOD STUDS @ 16" OC WITH FULL THICKNESS BATT INSULATION, VAPOR RETARDER AND ONE LAYER 5/8" GYPSUM BOARD @ INTERIOR FACE.
3A.1	MASONRY CAVITY WALL CONSISTING OF 4" FACE BRICK, 1-3/8" AIR SPACE, 2" RIGID INSULATION, SPRAY APPLIED AIR AND VAPOR BARRIER SYSTEM ON P CONCRETE MASONRY UNIT BACK-UP. PROVIDE ADJUSTABLE MASONRY VENEER ANCHORS @ 16" OC EACH WAY, CAVITY DRAINAGE MATERIAL, FLASHING, CAVITY WEEPSVENTS @ 24" OC AND MASONRY EXPANSION AND CONTROL JOINTS. COMPARTMENTALIZE CAVITY AND PROVIDE CAVITY WEEPSVENTS AT TOP AND BOTTOM OF CAVITY. REFER TO DETAIL C3A600.
3D.1	FIBER CEMENT CLAD WALL CONSISTING OF FIBER CEMENT SIDING, 2" RIGID INSULATION W/2" FERRING @ 16" OC, SPRAY APPLIED AIR AND VAPOR BARRIER SYSTEM ON P CONCRETE MASONRY UNIT BACK-UP. PROVIDE FLASHING.
4A.1	EXTERIOR WALL MASONRY CAVITY WALL CONSISTING OF 4" FACE BRICK, 1-3/8" AIR SPACE, 2" RIGID INSULATION, SPRAY APPLIED AIR AND VAPOR BARRIER SYSTEM ON CAST-IN-PLACE CONCRETE BACK-UP WALL WITH ADJUSTABLE TWO-PURPOSE HORIZONTAL MASONRY JOINT REINFORCING @ 16" OC (REFER TO STRUCTURAL DRAWINGS FOR REQUIRED VERTICAL REINFORCING). PROVIDE CAVITY DRAINAGE MATERIAL, FLASHING, CAVITY WEEPSVENTS @ 24" OC AND MASONRY EXPANSION AND CONTROL JOINTS. COMPARTMENTALIZE THE CAVITY AND PROVIDE CAVITY WEEPSVENTS AT TOP/BOTTOM OF CAVITY.

INTERIOR PARTITION SCHEDULE

TYPE MARK	DESCRIPTION	RATING	UL	INSULATION	STC
DFD	2 X 4 WOOD STUDS @ 16" OC ONE LAYER 5/8" GYPSUM BOARD @ EACH FACE	--	--	--	--
DFI	2 X 4 WOOD STUDS @ 16" OC 1-LAYER 5/8" GYPSUM BOARD @ EACH FACE	1HR	U30S	--	--
EF0	2 X 4 WOOD STUDS @ 16" OC ONE LAYER 5/8" GYPSUM BOARD @ EACH FACE PROVIDE 1/2" RESILIENT CHANNELS @ 16" OC (CORR SIDE ONLY).	--	--	3-1/2" SOUND	--
FF0	2 X 4 WOOD STUDS @ 16" OC ONE LAYER 5/8" GYPSUM BOARD @ EACH FACE PROVIDE 1/2" RESILIENT CHANNELS @ 16" OC (CORR SIDE ONLY).	1HR	U32T	3-1/2" SOUND	--
FF1	2 X 4 WOOD STUDS @ 16" OC ONE LAYER 5/8" GYPSUM BOARD @ EACH FACE PROVIDE 1/2" RESILIENT CHANNELS @ 16" OC (CORR SIDE ONLY).	1HR	U32T	5-1/2" SOUND	--
FJ1	2 X 4 WOOD STUDS @ 16" OC ONE LAYER 5/8" GYPSUM BOARD @ EACH FACE PROVIDE 1/2" RESILIENT CHANNELS @ 16" OC (CORR SIDE ONLY).	1HR	U32T	5-1/2" SOUND	--
JC0	1-1/2" WOOD STUDS @ 16" OC ONE LAYER 5/8" GYPSUM BOARD	--	--	--	--
JF0	3-1/2" WOOD STUDS @ 16" OC ONE LAYER 5/8" GYPSUM BOARD	--	--	--	--
JU0	5-1/2" WOOD STUDS @ 16" OC ONE LAYER 5/8" GYPSUM BOARD @ EACH FACE PROVIDE 1/2" RESILIENT CHANNELS @ 16" OC (CORR SIDE ONLY).	1HR	U32T	3-1/2" SOUND (ONE SIDE ONLY)	--
SG0	4" CONCRETE BLOCK	--	--	--	--
SN0	8" CONCRETE BLOCK	1HR	--	--	--
SN1	8" CONCRETE BLOCK	2HR	--	--	--
SN2	8" CONCRETE BLOCK	--	--	--	--

GYPSUM BOARD PARTITIONS - GENERAL NOTES

ALL GYPSUM BOARD PARTITIONS SHALL BE (EF0) UNLESS OTHERWISE NOTED ON FLOOR PLAN.

GYPSUM BOARD PARTITION DIMENSIONS ON FLOOR PLAN ARE BASED ON FACE OF STUD PARTITION TO FACE OF STUD PARTITION (NOMINAL).

REFER TO GYPSUM BOARD SPECIFICATION FOR LOCATION AND TYPE(S) OF GYPSUM BOARD MATERIAL REQUIRED.

PROVIDE FIRE RATED GYPSUM BOARD AT ALL FIRE RATED PARTITIONS.

SEAL ALL WALL PENETRATIONS AT PERIMETER AND FIRESTOP ALL FIRE RATED PARTITIONS.

MASONRY PARTITIONS - GENERAL NOTES

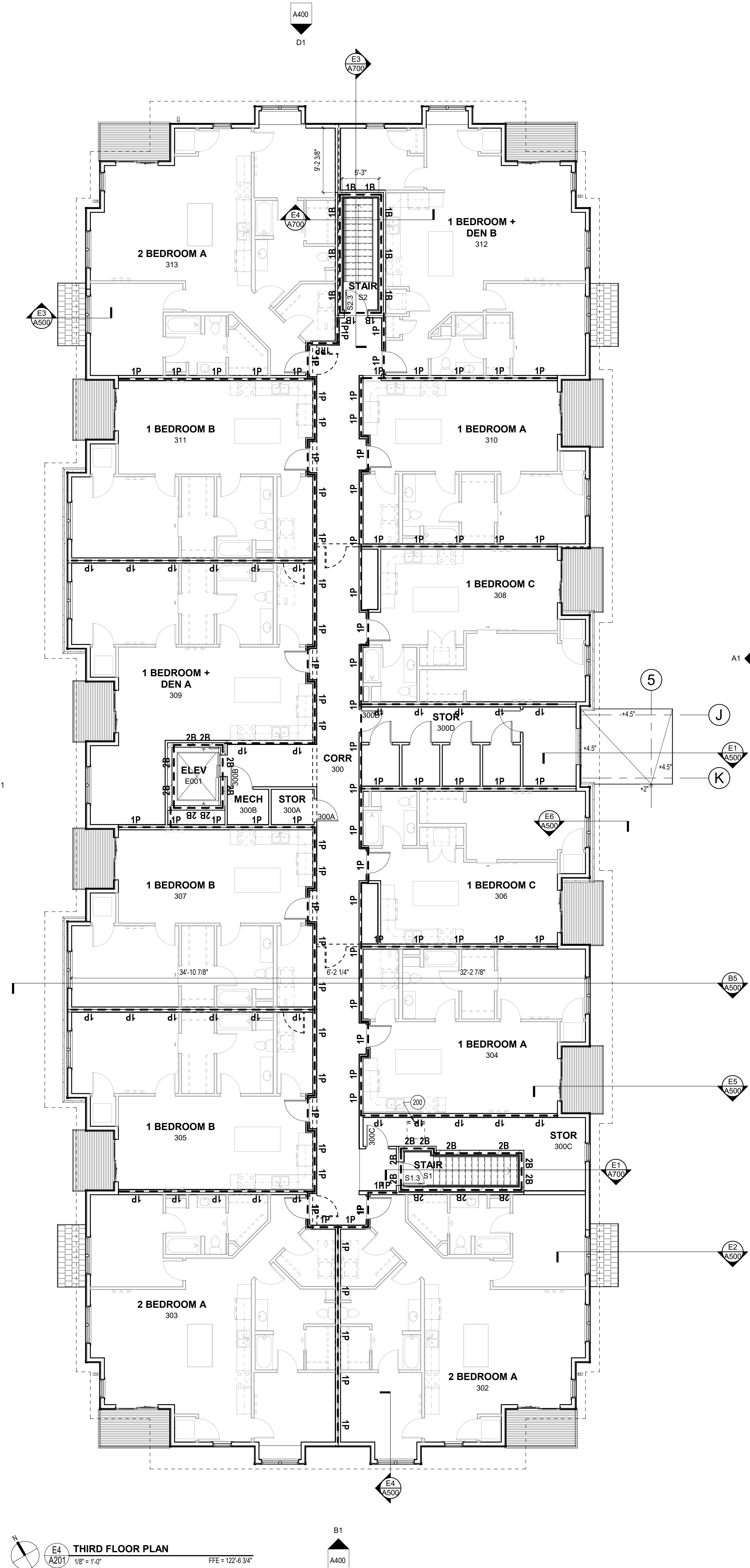
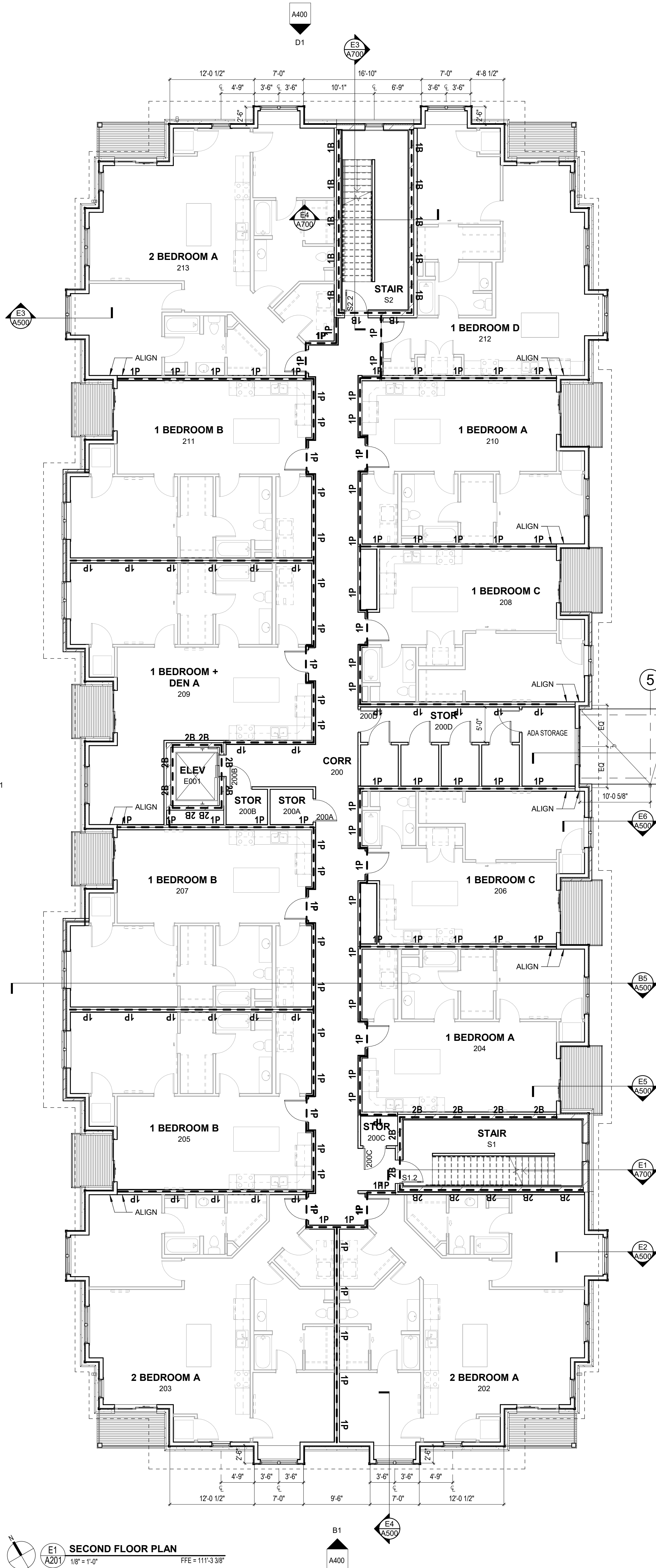
MASONRY PARTITIONS INDICATED WITH THE FOLLOWING HATCH PATTERN:

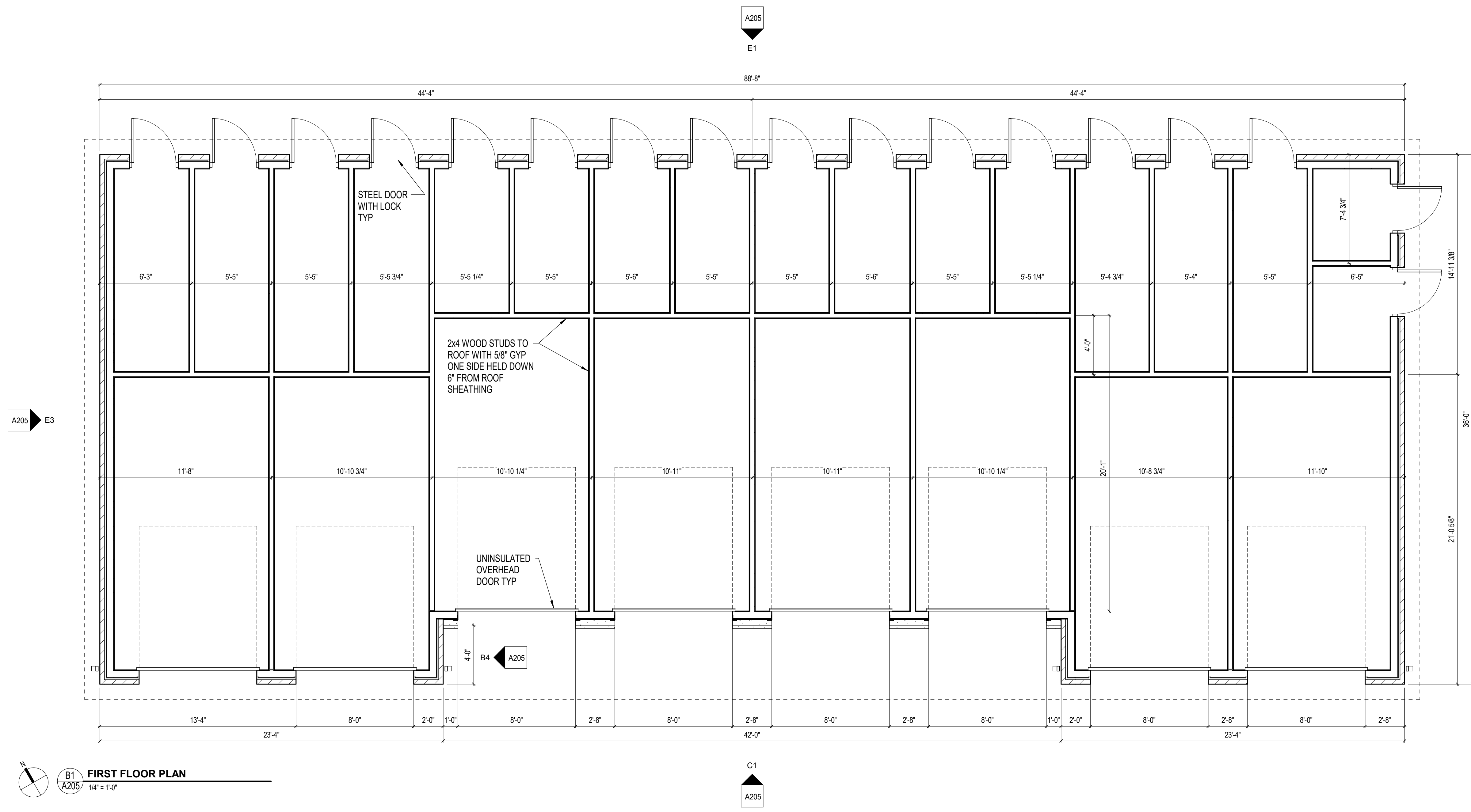
ALL MASONRY PARTITIONS SHALL BE 8" CONCRETE BLOCK UNLESS OTHERWISE NOTED OR DIMENSIONED. REFER TO FLOOR PLAN FOR PARTITION THICKNESS.

PROVIDE UL RATED CONCRETE BLOCK AT ALL FIRE RATED PARTITIONS.

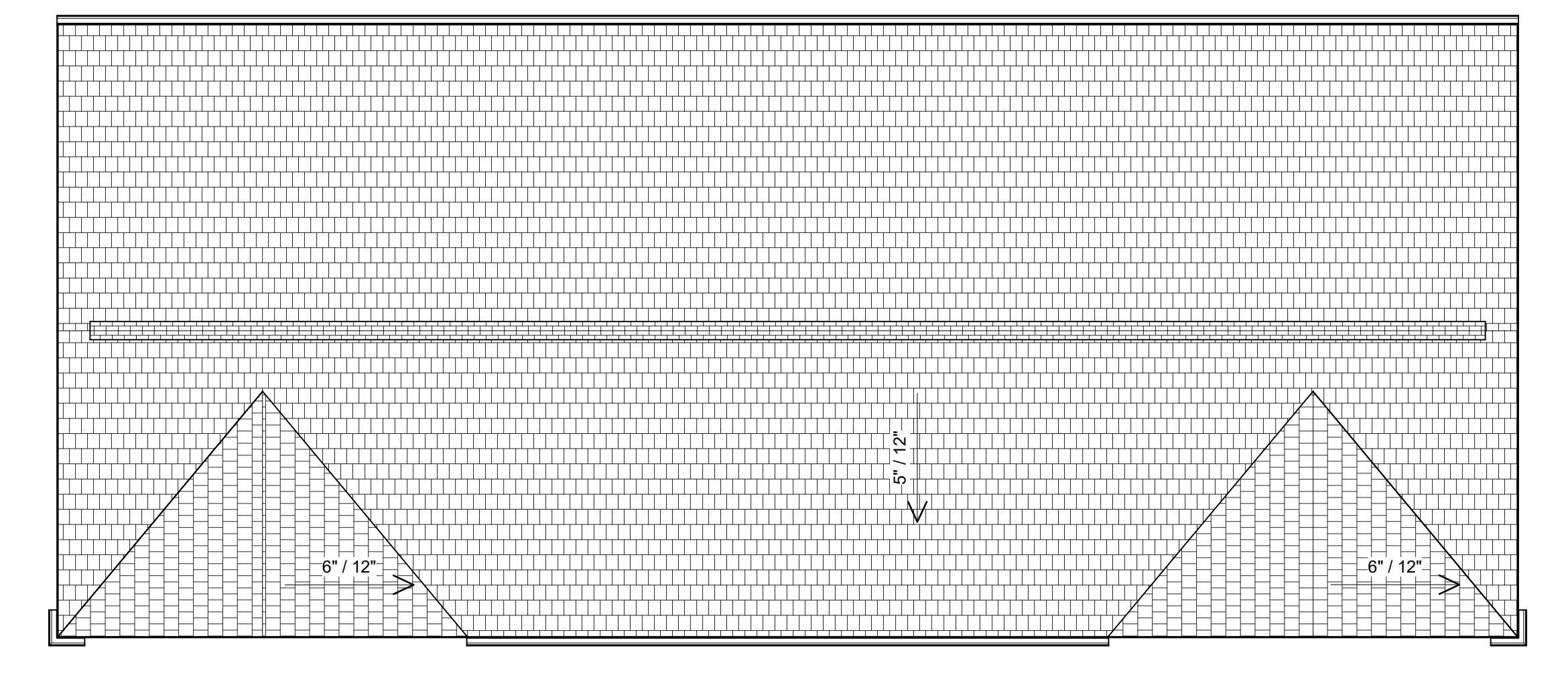
SEAL ALL WALL PENETRATIONS AT PERIMETER AND FIRESTOP ALL RATED PARTITIONS.

EXTEND CONCRETE BLOCK PARTITIONS FULL HEIGHT TO UNDERSIDE OF PRECAST PLANK ABOVE. REFER TO DETAIL C3A810. PROVIDE HORIZONTAL MASONRY JOINT REINFORCING @ 16" OC VERTICALLY. REFER TO STRUCTURAL DRAWINGS FOR VERTICAL REINFORCEMENT REQUIREMENTS.

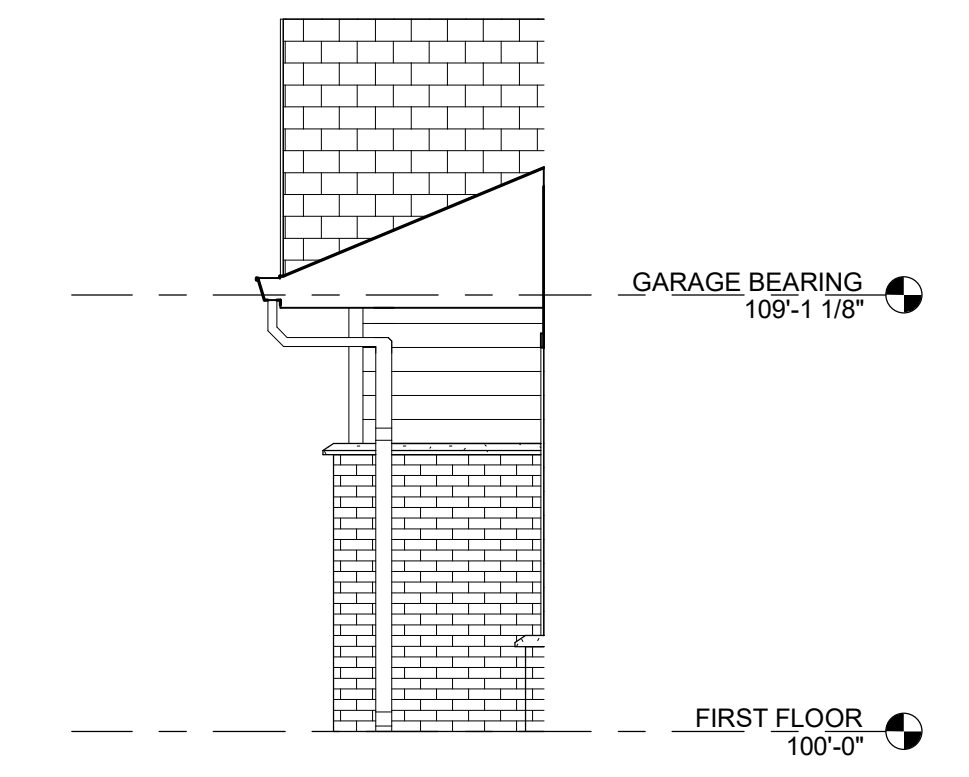




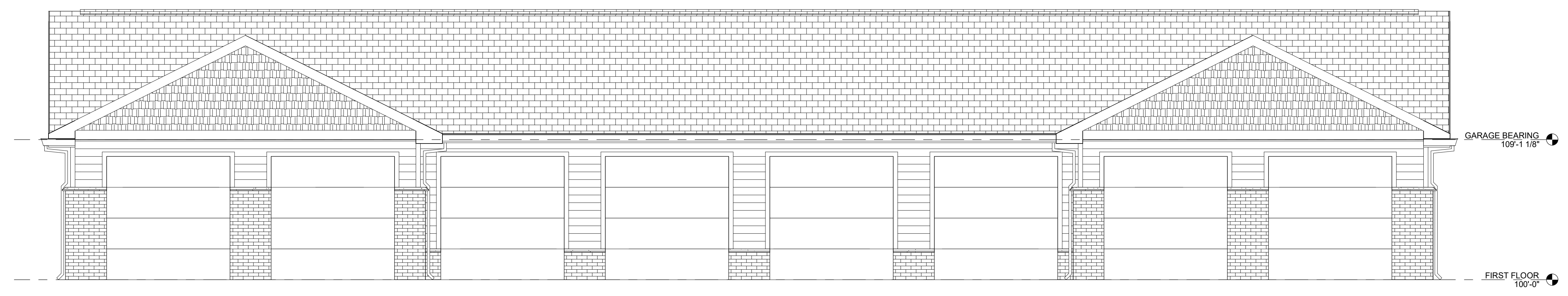
B1
A205
FIRST FLOOR PLAN
1/4" = 1'-0"



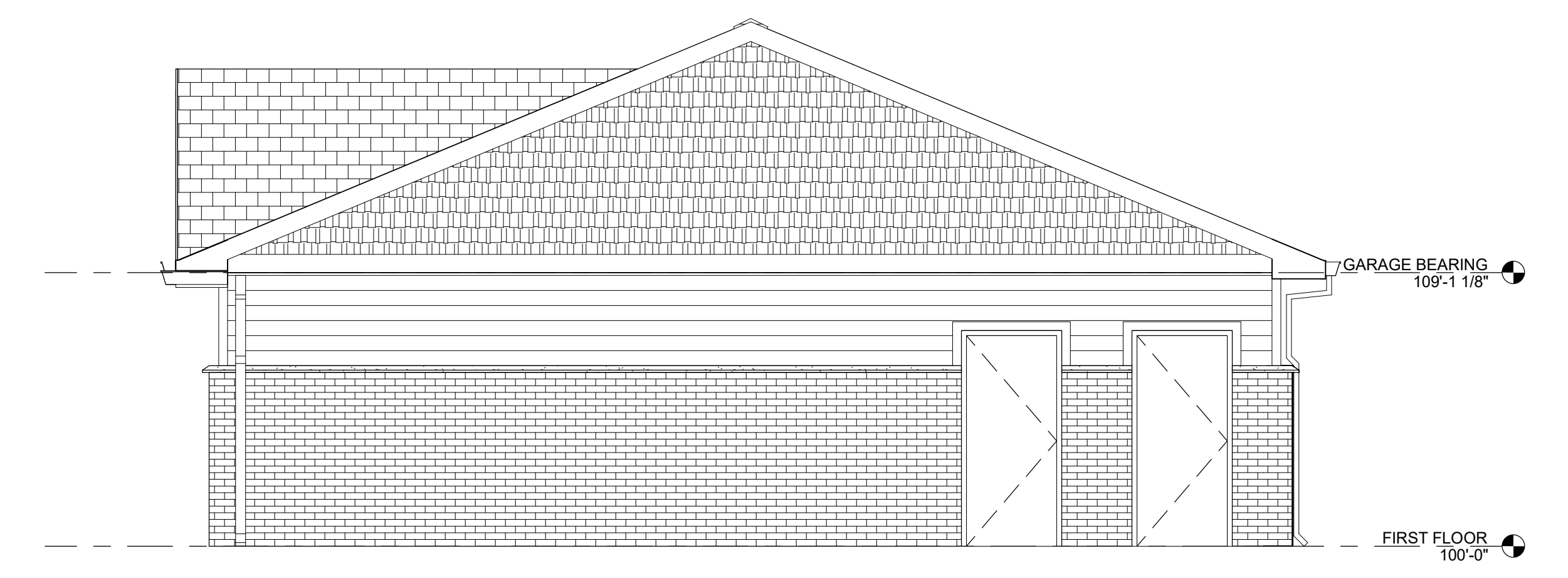
A4
A205
ROOF PLAN
1/8" = 1'-0"



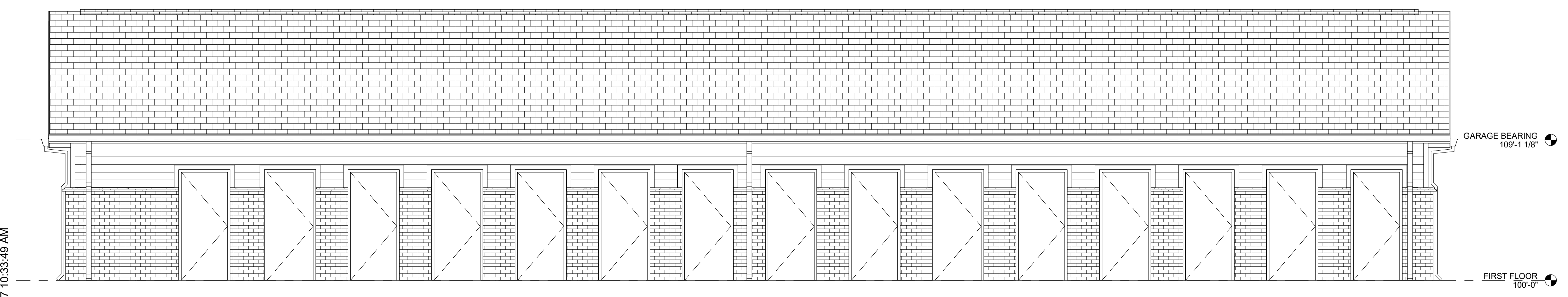
B4
A205
GARAGE -
1/4" = 1'-0"



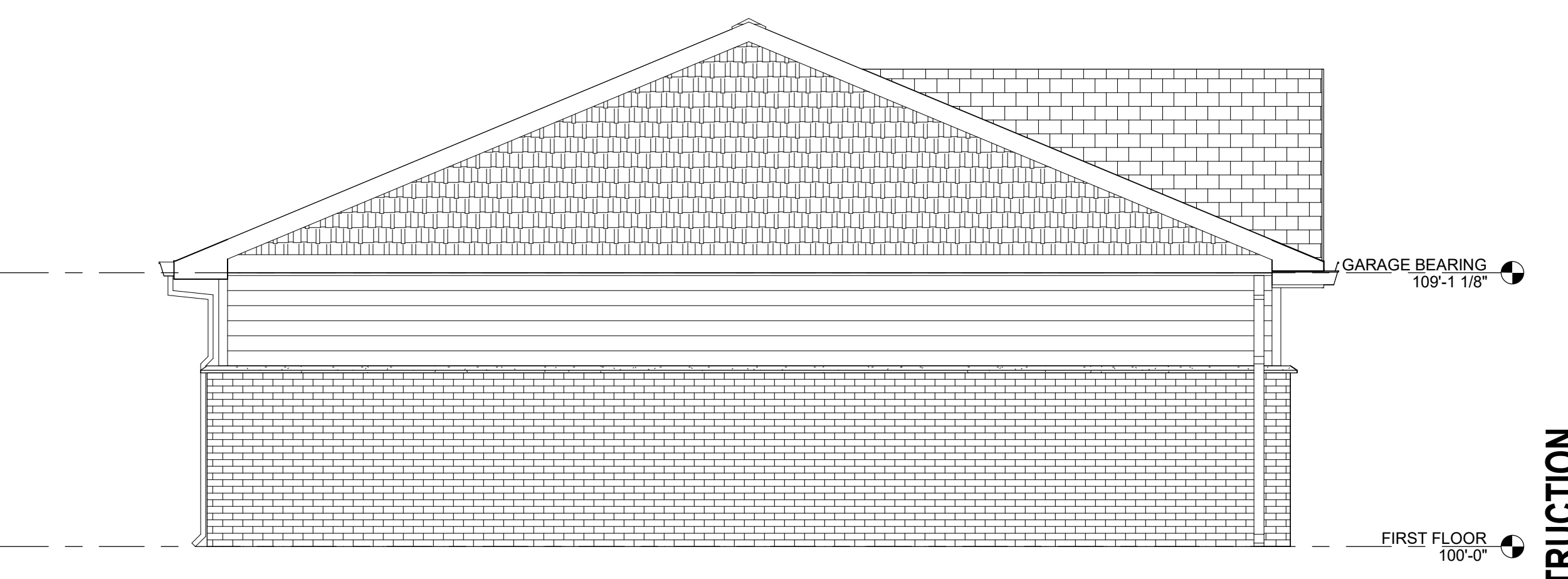
C1
A205
GARAGE - NORTH
1/4" = 1'-0"



C4
A205
GARAGE - EAST
1/4" = 1'-0"



E1
A205
GARAGE - SOUTH
1/4" = 1'-0"



E3
A205
GARAGE - WEST
1/4" = 1'-0"

DRAWN BY: Author 11/3/2017 10:33:49 AM