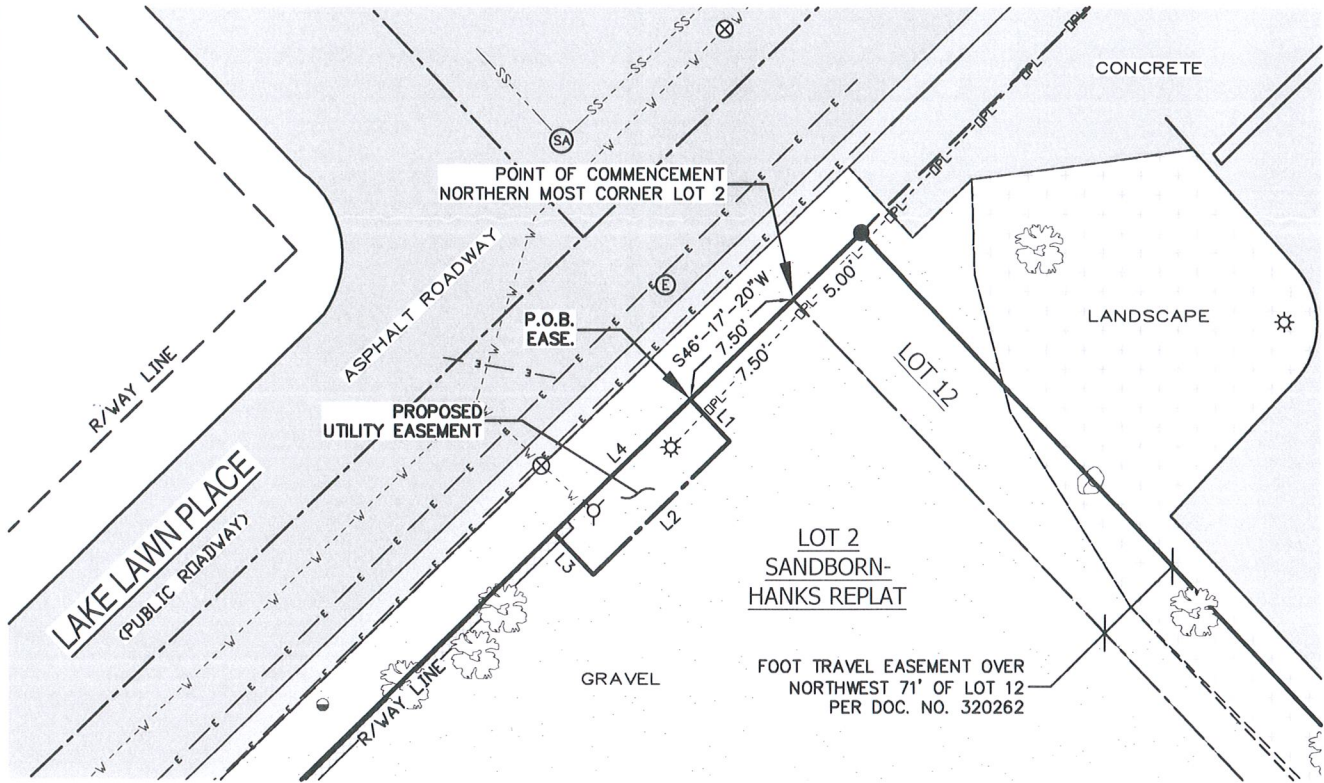


# EXHIBIT A

LOT 2, SANBORN-HANKS REPLAT OF LOT 8, LOCATED IN THE SW1/4 OF THE SE1/4, SECTION 14, T.7N., R.9E., CITY OF MADISON, DANE COUNTY, WISCONSIN



## —LEGEND—

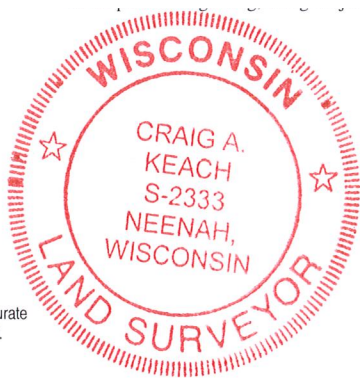
- = 1/2" IRON PIPE FOUND
- ⊗ = WATER VALVE
- ⊕ = FIRE HYDRANT
- ⊙ = SANITARY MANHOLE
- ⓔ = ELECTRIC MANHOLE
- = MANHOLE
- ⊛ = LIGHT POLE
- W- = WATER MAIN
- SS- = SANITARY SEWER
- E- = BURIED ELECTRIC
- OPL- = OVERHEAD ELECTRIC
- 🌳 = EXISTING TREE
- ⊙ = ROCK/BOULDER

### SURVEYOR'S CERTIFICATE

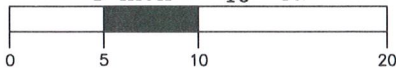
I, Craig A. Keach, Professional Land Surveyor of Meridian Surveying, LLC., certify that I have surveyed the described property and that the map shown is a true and accurate representation thereof to the best of my knowledge and belief.

Dated this 20th day of JUNE, 2017.

*Craig A. Keach*  
 WISCONSIN PROFESSIONAL LAND SURVEYOR  
 Craig A. Keach, S-2333



GRAPHIC SCALE  
 1 inch = 10 ft.



LINE TABLE		
Line #	Direction	Length
L1	S43°56'47"E	3.00'
L2	S46°17'20"W	10.00'
L3	N43°56'47"W	3.00'
L4	N46°17'20"E	10.00'

NORTH REFERENCED TO THE DANE COUNTY COORDINATE SYSTEM



**MERIDIAN SURVEYING, LLC**

N8774 Firelane 1  
 Menasha, WI 54952

Office: 920-993-0881  
 Fax: 920-273-6037

DRAWN BY: J.B.	FIELD WORK DATE: 11-23-16
CHECKED BY: S.C.D.	FIELD BOOK: M-39, PG.20
JOB NO.: 9466	SHEET 1 OF 1

SURVEYED FOR:  
 EDGE CONSULTING ENGINEERS, INC.  
 624 WATER STREET  
 PRAIRIE DU SAC, WI 53578