

LOCATOR MAP



STATE PROJECT SCHEDULE

FALL 2014 - State Solicited Proposals

FEBRUARY 2017 - Parking Structure Complete

EARLY SPRING 2018 - State Office Building Complete

FALL 2018 - DOT Building Demolished

LATE 2018 - Private Development Begins

REZONING PROCESS

Current Zoning: Suburban Employment (SE)

Proposed Zoning: Planned Development District (PD)

GDP Zoning Application Submittal: Early November 2017

Future Specific Implementation Plan (SIP) Applications:

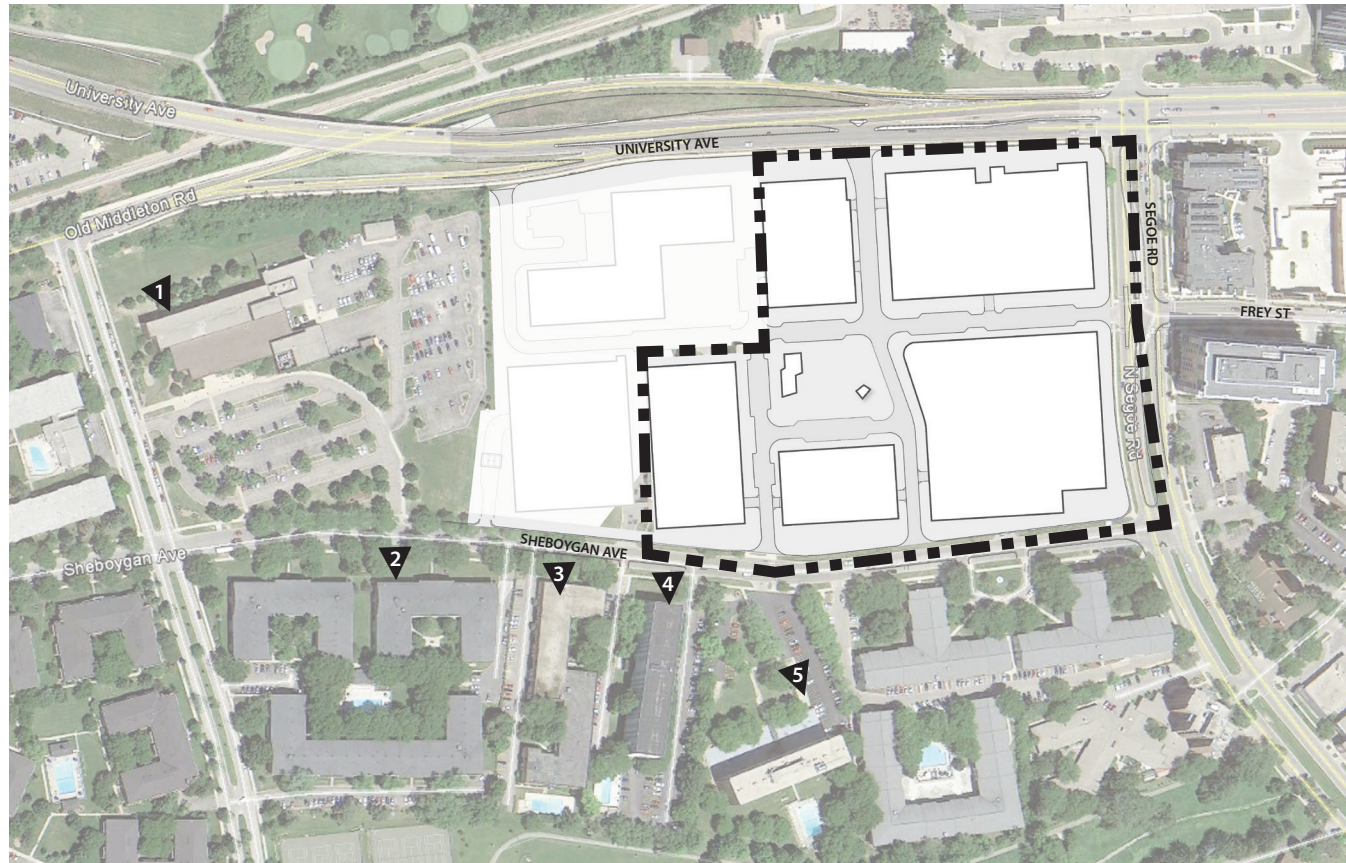
Streetscapes & Central Green SIP: Spring 2018

Individual block SIPs (5): Spring - Summer 2018





CONTEXTUAL SITE INFORMATION



1. AMERICAN RED CROSS



2. THE CAROLINA APARTMENTS



3. THE SOVEREIGN APARTMENTS

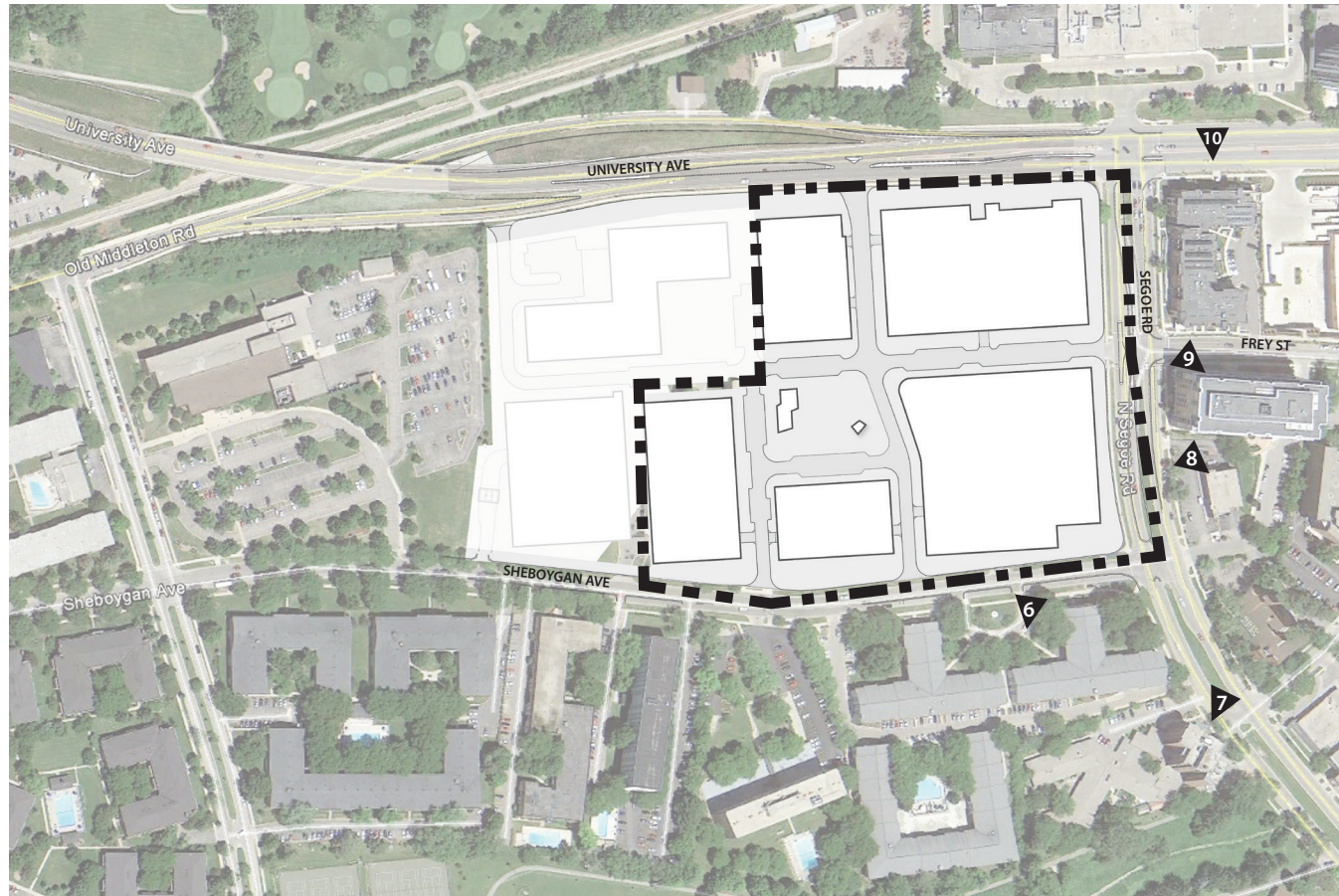


4. HILLDALE TOWER



5. PARK TOWER AT HILLDALE

CONTEXTUAL SITE INFORMATION



6. THE NORMANDY APARTMENTS



7. SEGOE GARDENS ASSISTED LIVING



8. VENTURE



9. WESTON PLACE

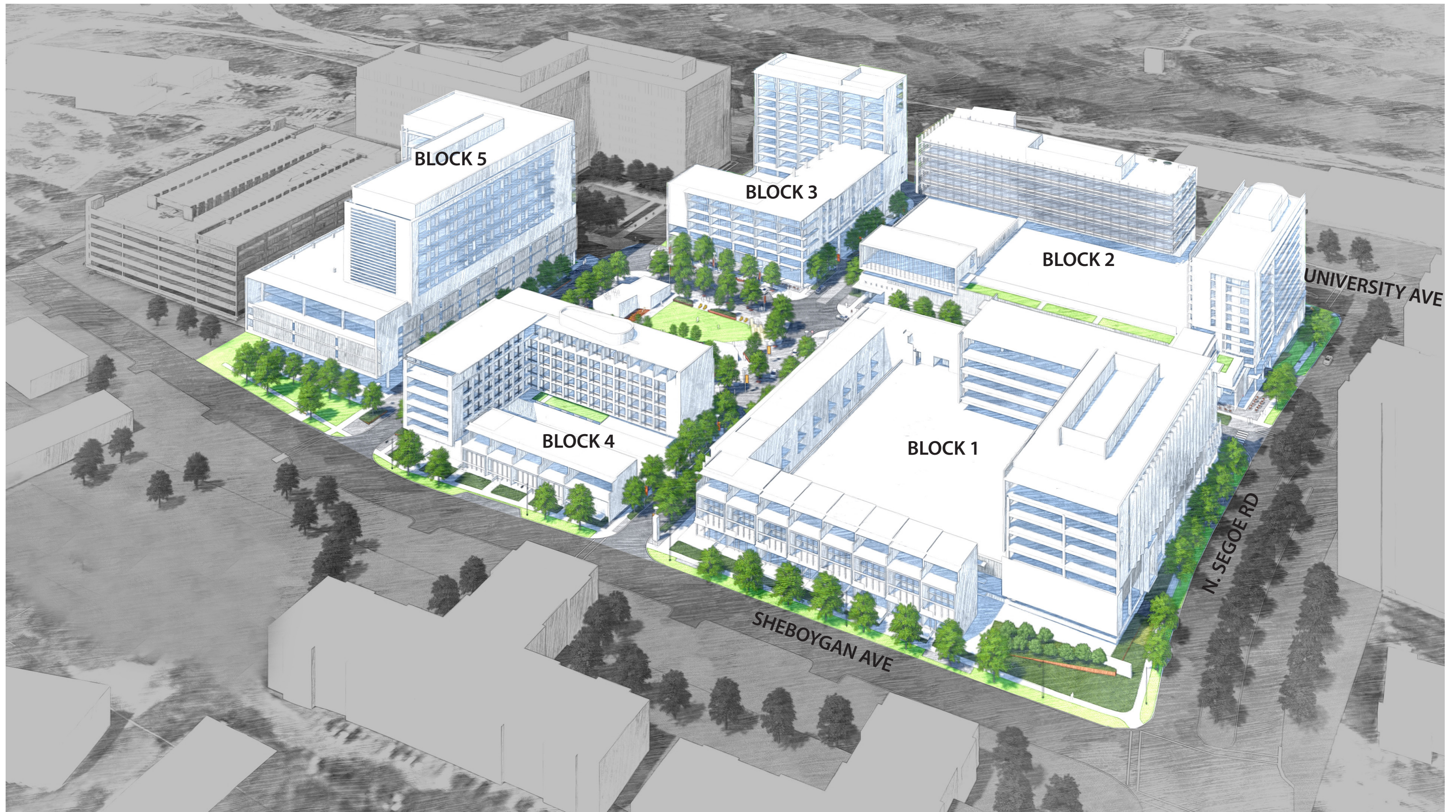


10. OVERLOOK AT HILLDALE

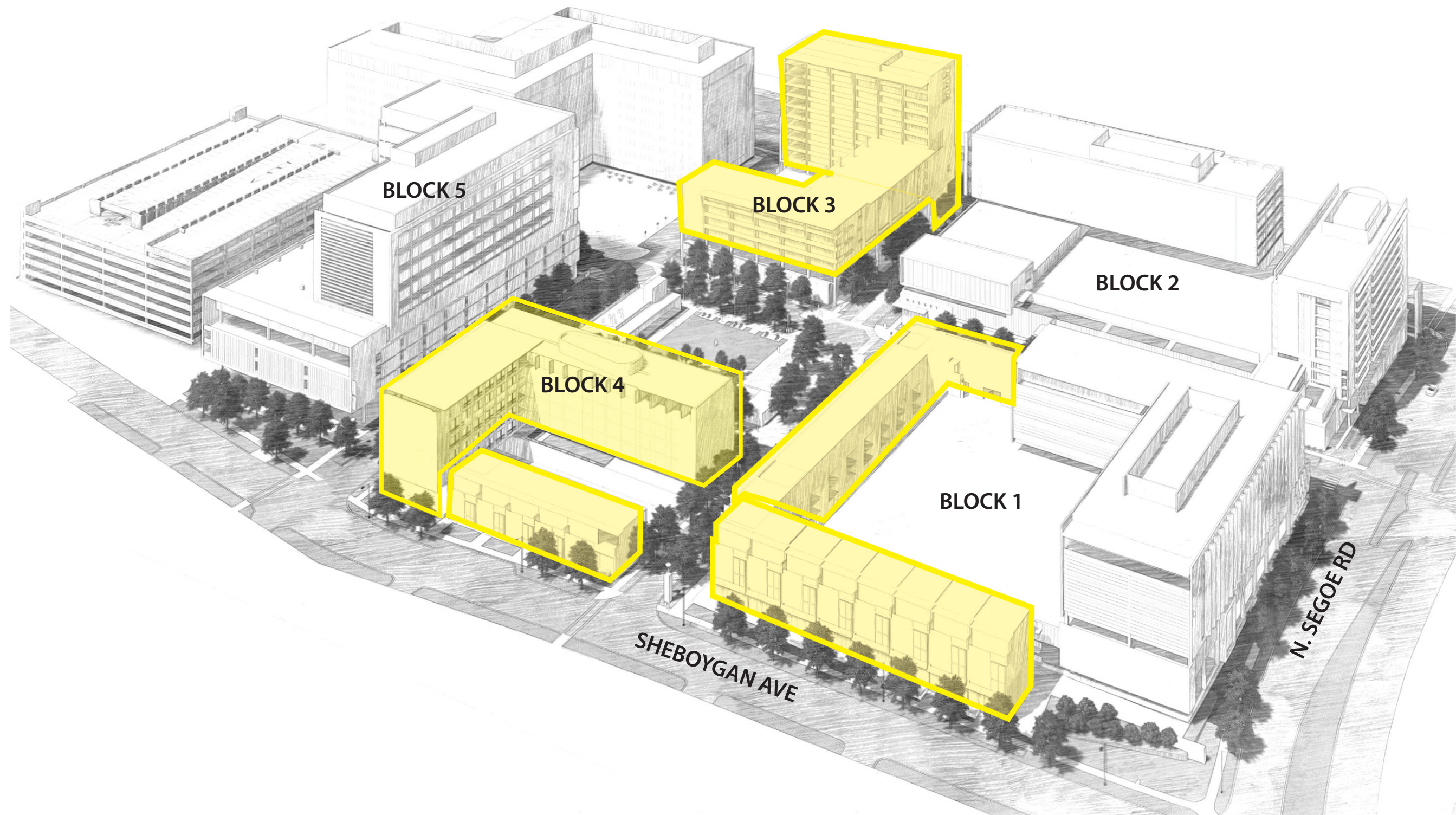
CONTEXTUAL SITE INFORMATION



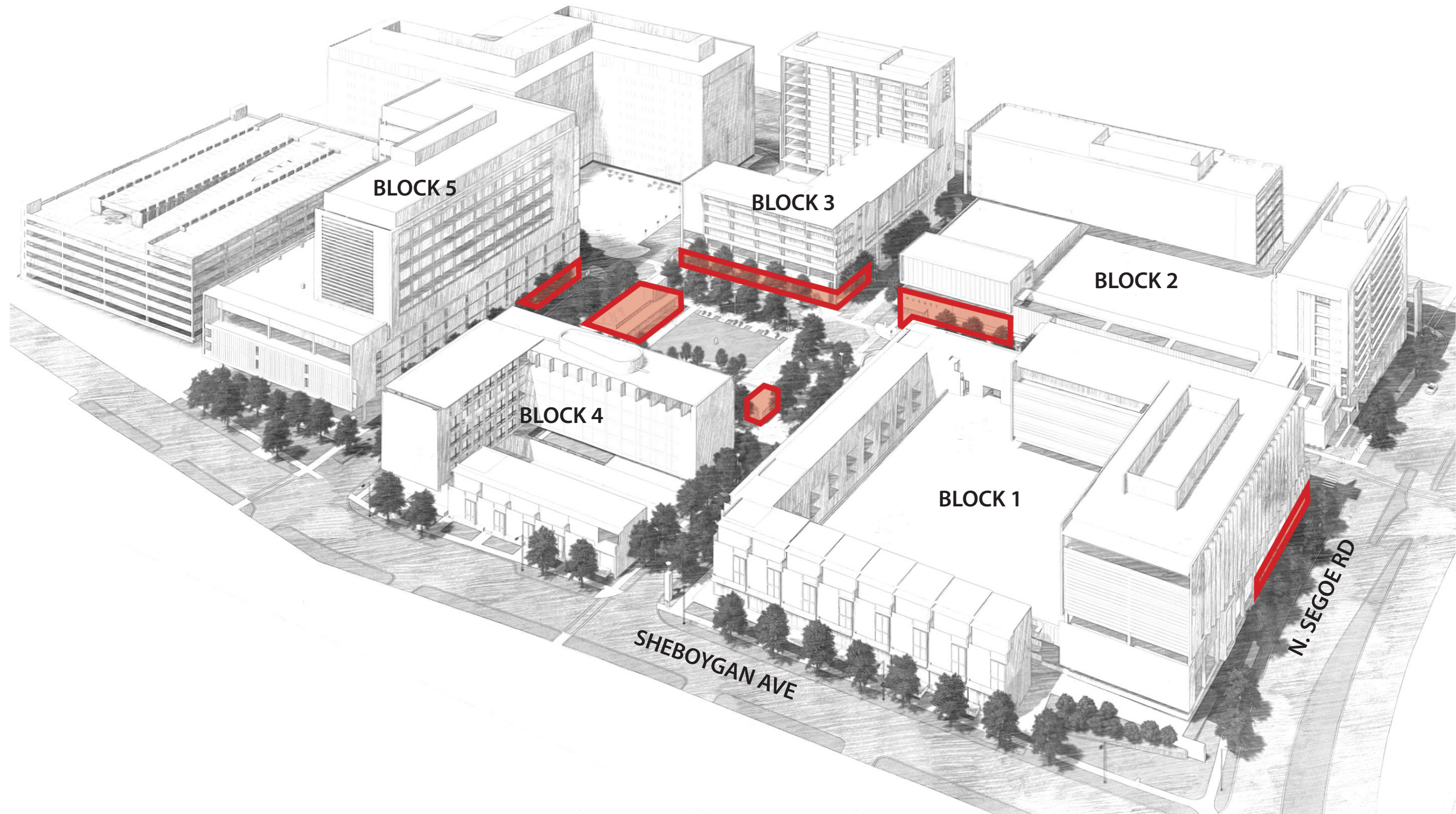
SITE PLAN



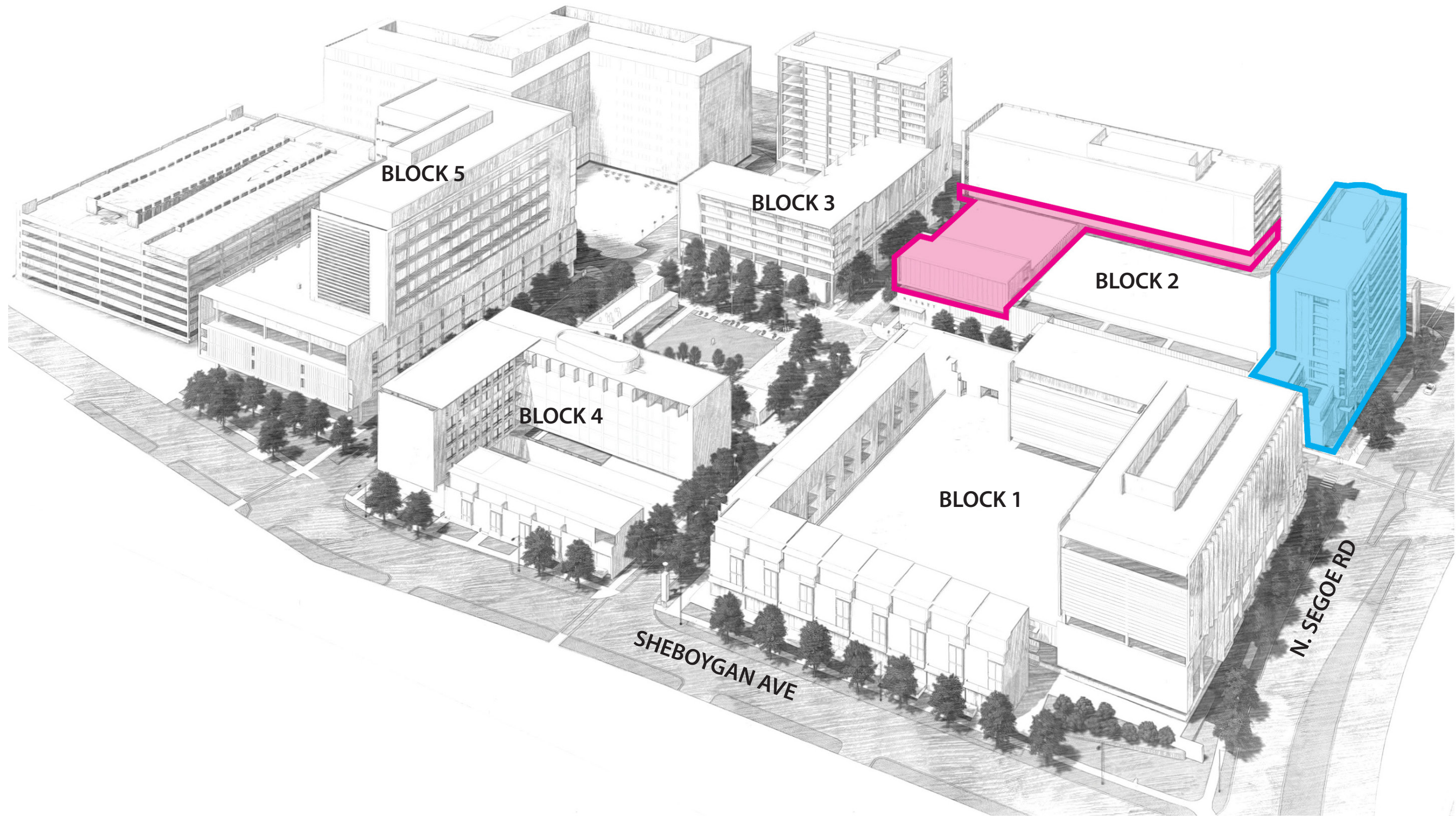
BUILDING MASSING



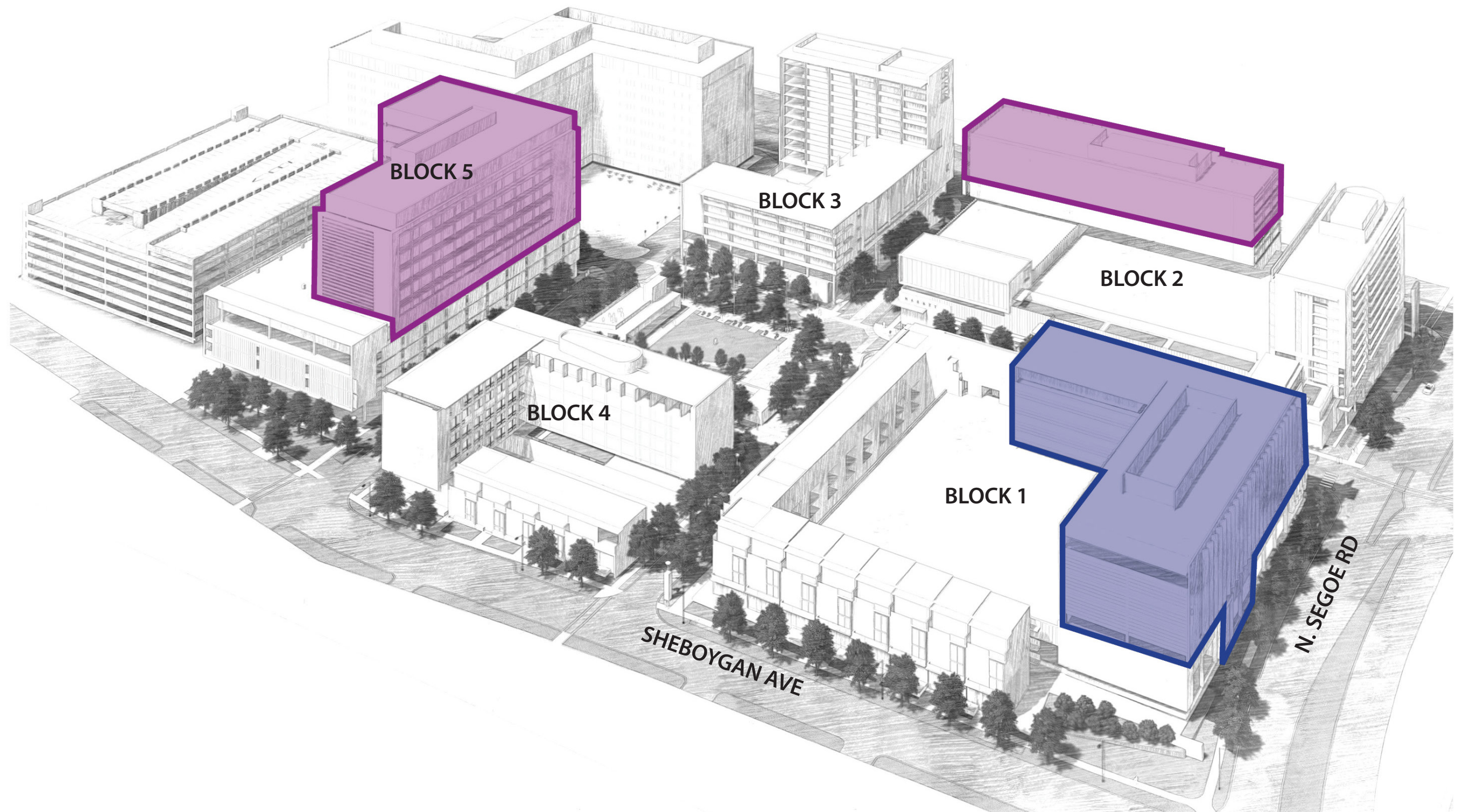
BUILDING MASSING - POTENTIAL RESIDENTIAL LOCATIONS



BUILDING MASSING - POTENTIAL RETAIL LOCATIONS



BUILDING MASSING - POTENTIAL HOTEL AND FITNESS LOCATIONS

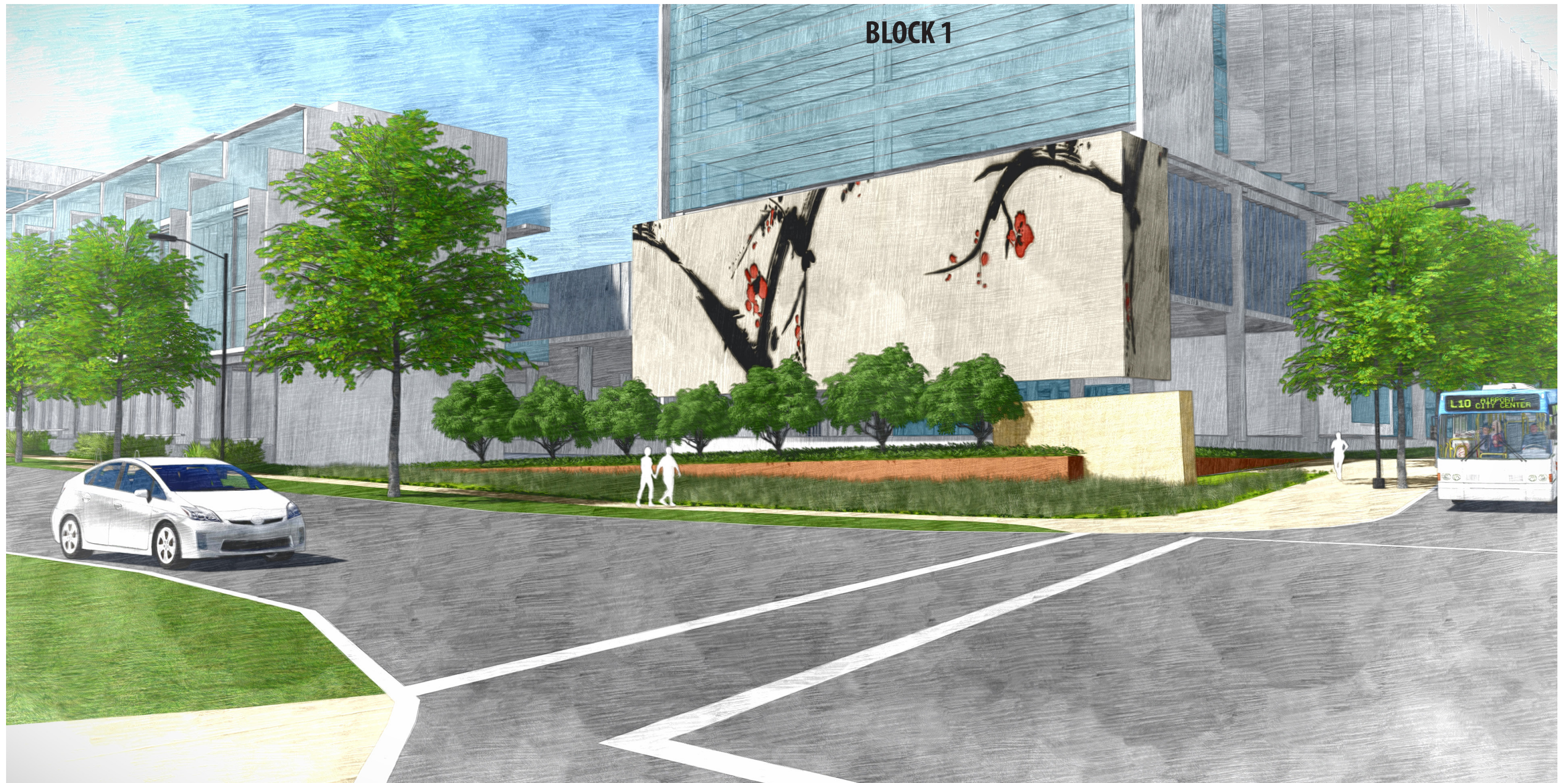


BUILDING MASSING - POTENTIAL OFFICE AND MEDICAL OFFICE LOCATIONS

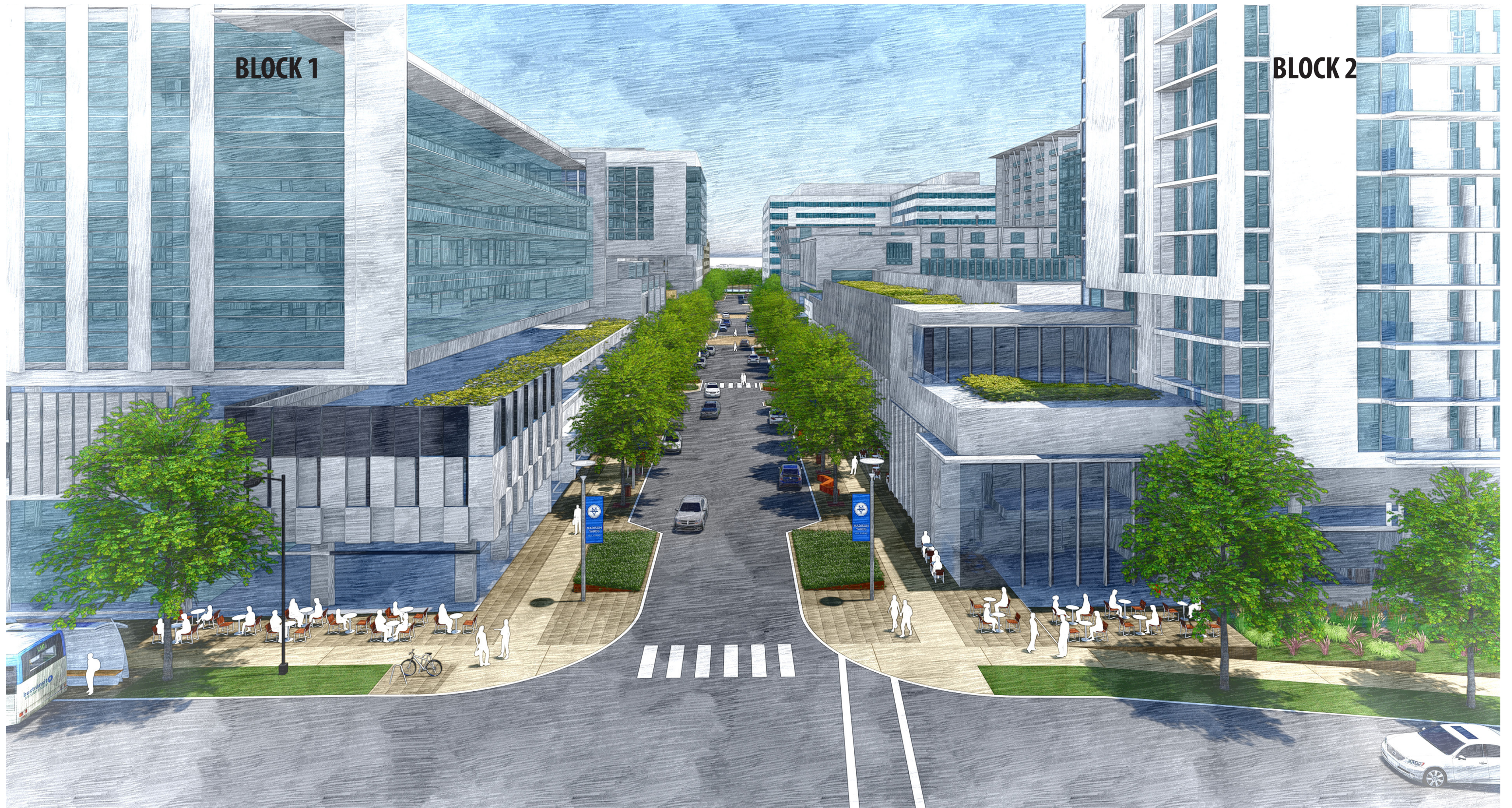


BLOCK 2

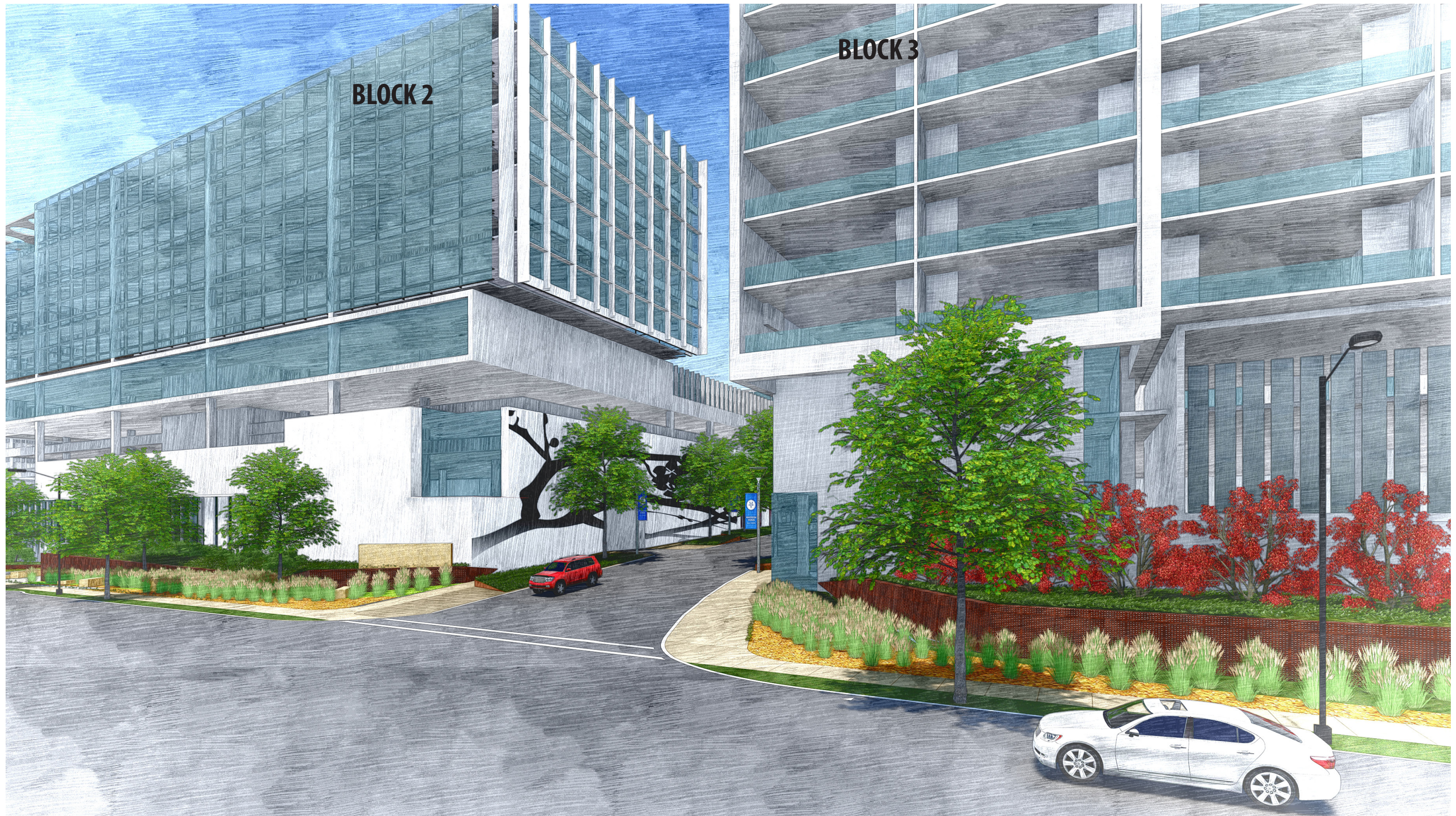
VIEW FROM UNIVERSITY AND SEGOE



VIEW FROM SEGOE AND SHEBOYGAN



SEGOE LOOKING WEST



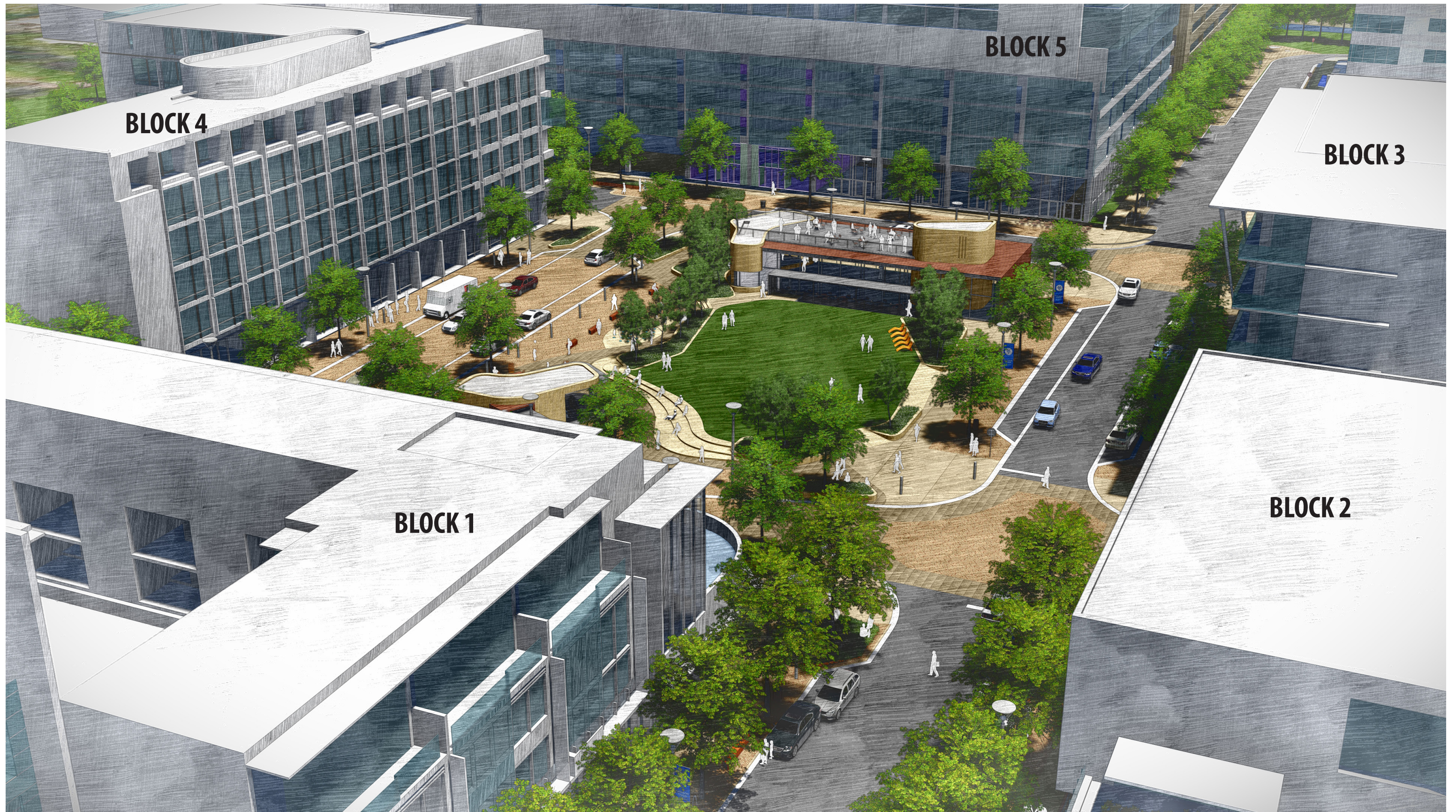
ENTRANCE DRIVE ON UNIVERSITY



RETAIL STREET



CENTRAL GREEN LOOKING SOUTHWEST



CENTRAL GREEN LOOKING WEST