

Citywide Goal #4: Strong and Complete Neighborhoods



OUTCOMES SUMMIT
MAY 2017

Why is this Goal important?

- The opportunity for all Madison residents connect and engage in their community and feel that their community is invested in them is the fundamental source of neighborhood strength
- It is also crucial that all Madison residents have the ability to easily access the places that provide the goods and services needed for daily life as well as spaces to gather as a community, which is what makes a neighborhood complete
- Too often our lowest income residents, who would most benefit from strong and complete neighborhoods, do not have opportunities to be part of them
- Equity Statement: All Madison residents will have equitable opportunities to live in and be part of a Strong and Complete Neighborhood

How will we know we are successful in achieving this Goal?

Outcome: Residents of all Madison Neighborhoods Are Empowered and Engaged in Shaping and Improving the Future of Their Community

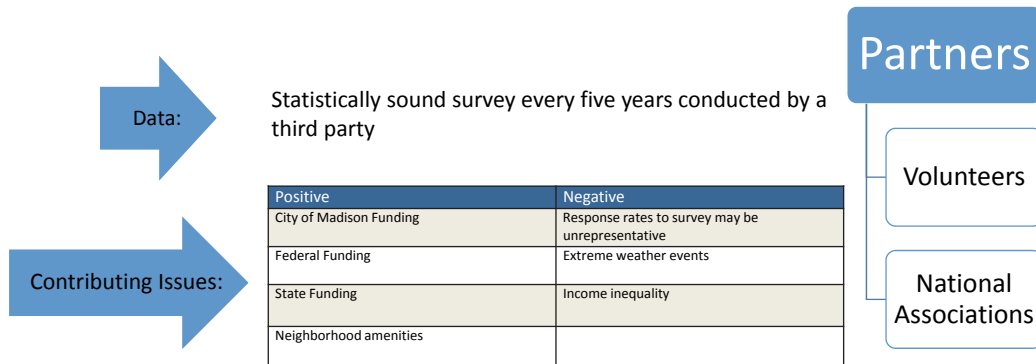
- Indicator: % of survey respondents that indicate they empowered and engaged in their neighborhood



How will we know we are successful in achieving this Goal?

Outcome: Neighborhoods will be Clean and Safe through the Provision of Non-Emergency Services

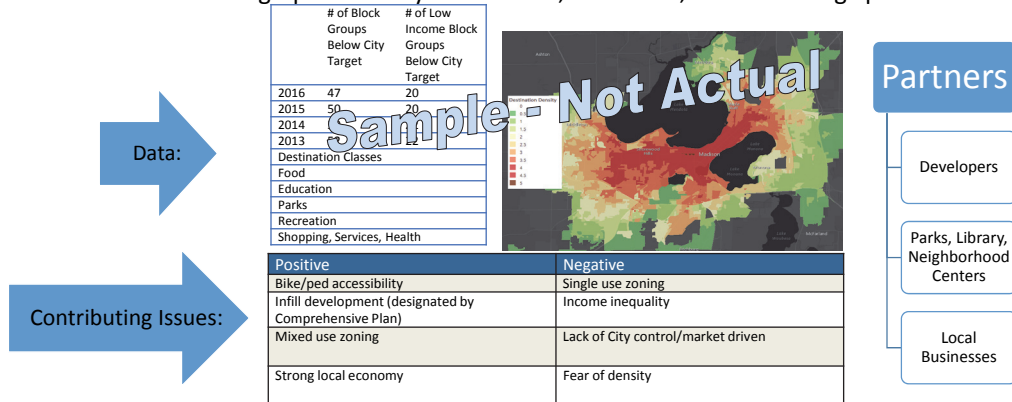
- Indicator: % of survey respondents that indicate satisfaction with non-emergency services



How will we know we are successful in achieving this Goal?

Outcome: Residents of All Madison Neighborhoods will have Convenient Access to Fundamental Activities, Amenities, and Gathering Spaces

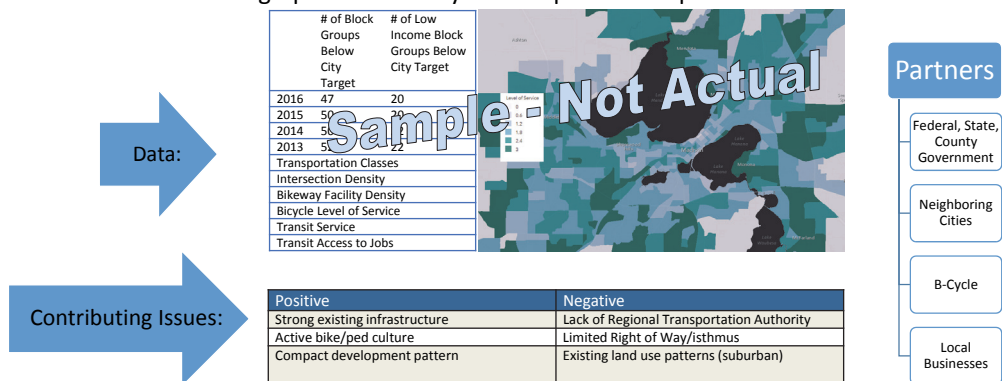
- Indicator: Geographic Density of Activities, Amenities, and Gathering Spaces



How will we know we are successful in achieving this Goal?

Outcome: All Madison Neighborhoods will have Access to a Variety of Transportation Options

- Indicator: Geographic Availability of Transportation Options



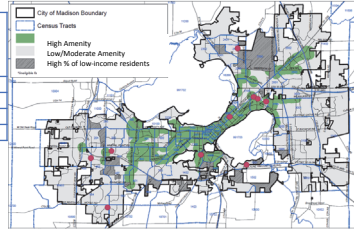
How will we know we are successful in achieving this Goal?

Outcome: All Madison Neighborhoods will have a Variety of Housing to Serve the Full Range of Madison Residents

- Indicator: # of New Affordable housing Units Created in Amenity Rich Neighborhoods

Data:

	# in High Amenity	# in Low/Mod Amenity	# in High % of low-income
2016	104	0	0
2015	113	40	0
2014	76	129	0
2013	0	70	0



Contributing Issues:

Positive	Negative
City of Madison Funding	Restrictive zoning
Federal Funding	Neighborhood resistance
Zoning for multifamily housing	Income inequality
Neighborhood amenities	Low vacancy rate

Partners

HUD

WHEDA

Private Developers