

[illegible]

City of Madison Engineering

How Does A Project Make it into the City's Transportation Budget

- Safety
- Deteriorated Pavement Condition
- Pedestrian & Bicycle Improvements
- Bridge Deteriorated Condition
- Utility Infrastructure
- Requests by Adjoining Municipalities
- Timely Ability to get Developer Contributions
- Extensions or Realignment in Accordance with Adopted Neighborhood Plans
- Roadway Congestion



Goals / Mission

- Plan, Design, Construct & Maintain High Quality Transportation Facilities
- Safe, Convenient, Balanced Transportation System
 - Vehicle, Bicycle, Pedestrian & Transit
- Responsible and Efficient use of public funds
- Innovative & State of the art designs to position Madison as a leading city in ped/bike & increase non motorized trips

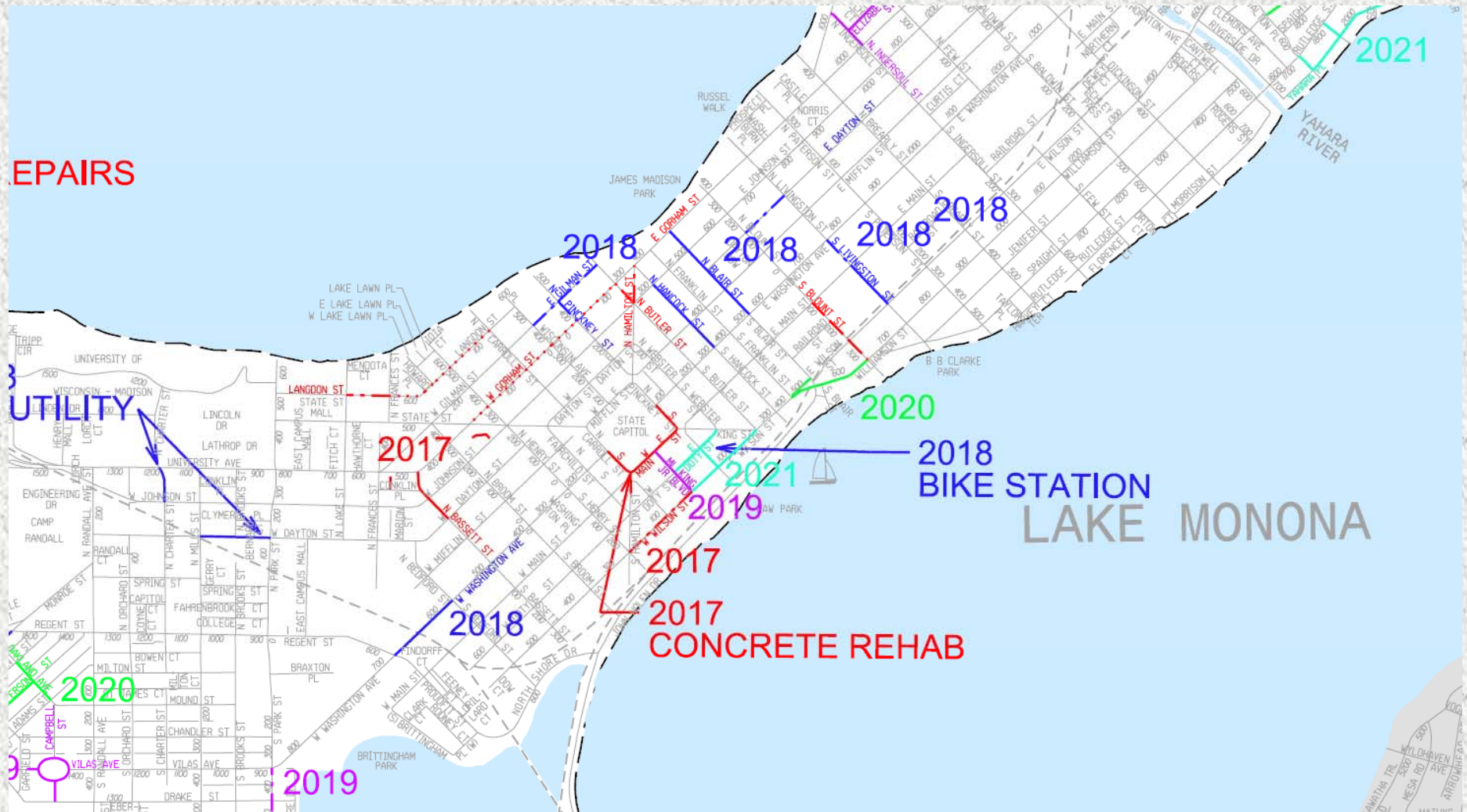


Sustainability

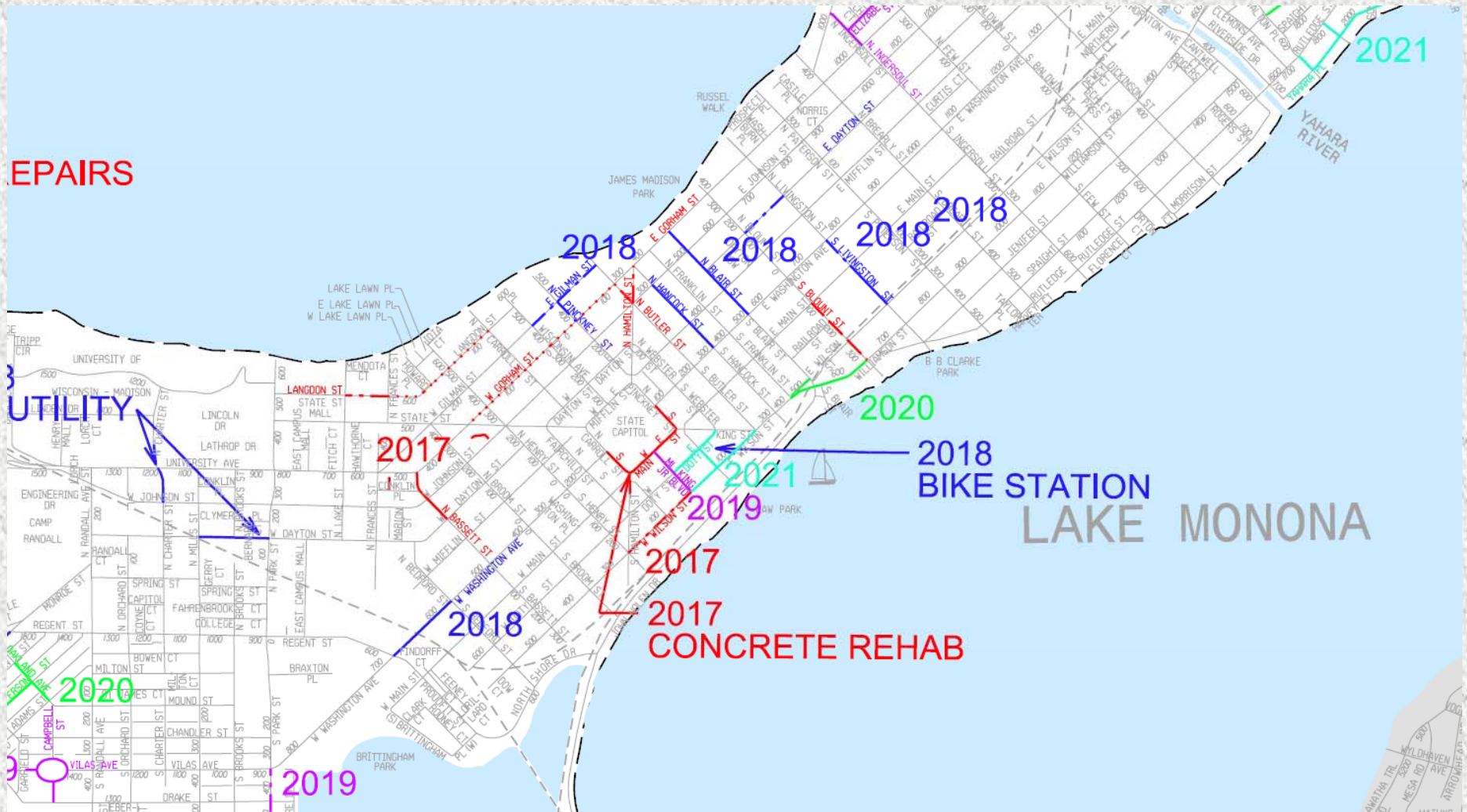
- Stormwater
 - Rain Gardens
 - Bio Retention
 - Sediment Control
- Pavement
 - Permeable Pavement
 - Permeable Sidewalk
 - Recycling in Pavements
- Tree
 - Silva Cell
 - Tree Vaults
- Energy usage
 - LED street lights
 - LED signals



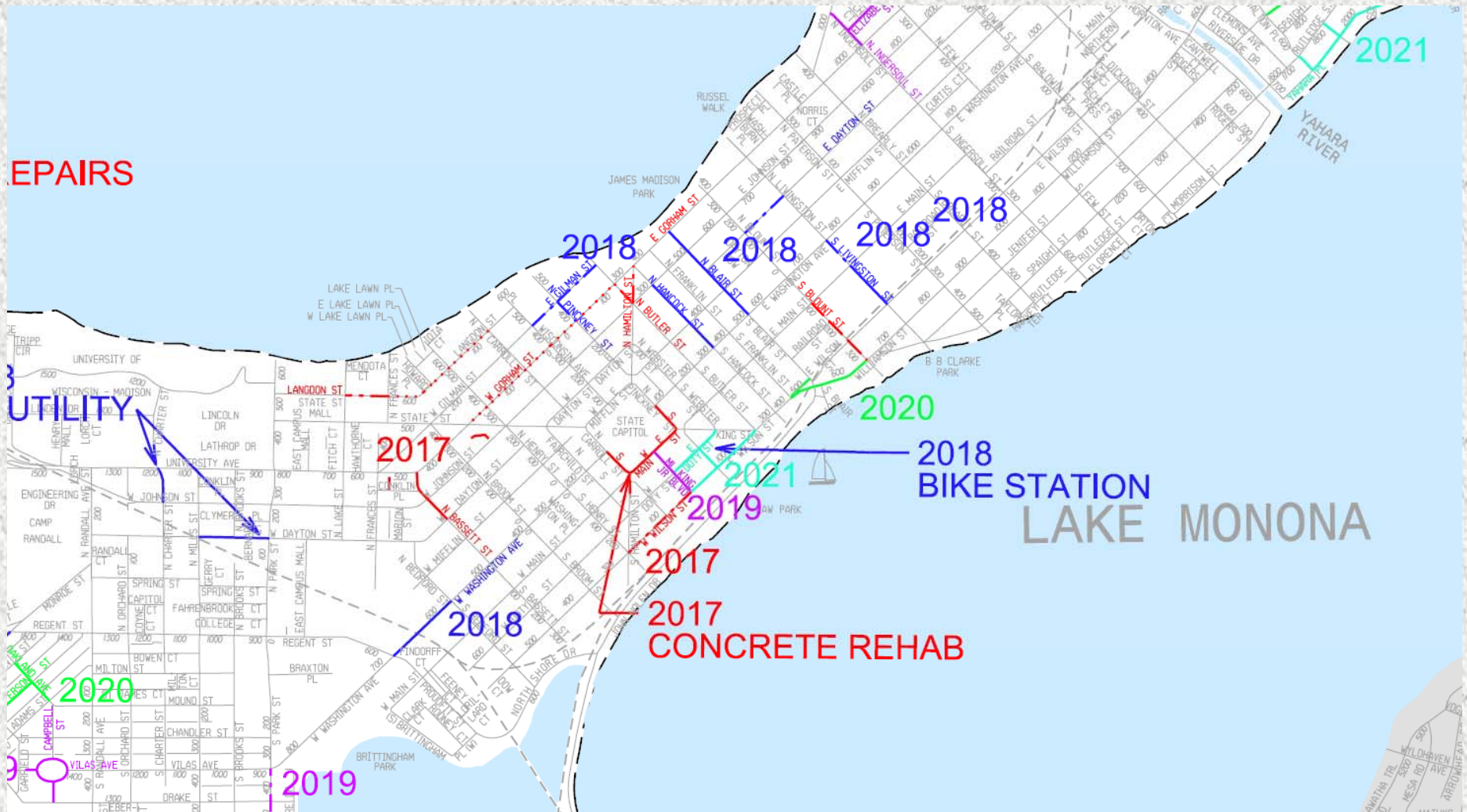
Capital Outer Loop 2011-21



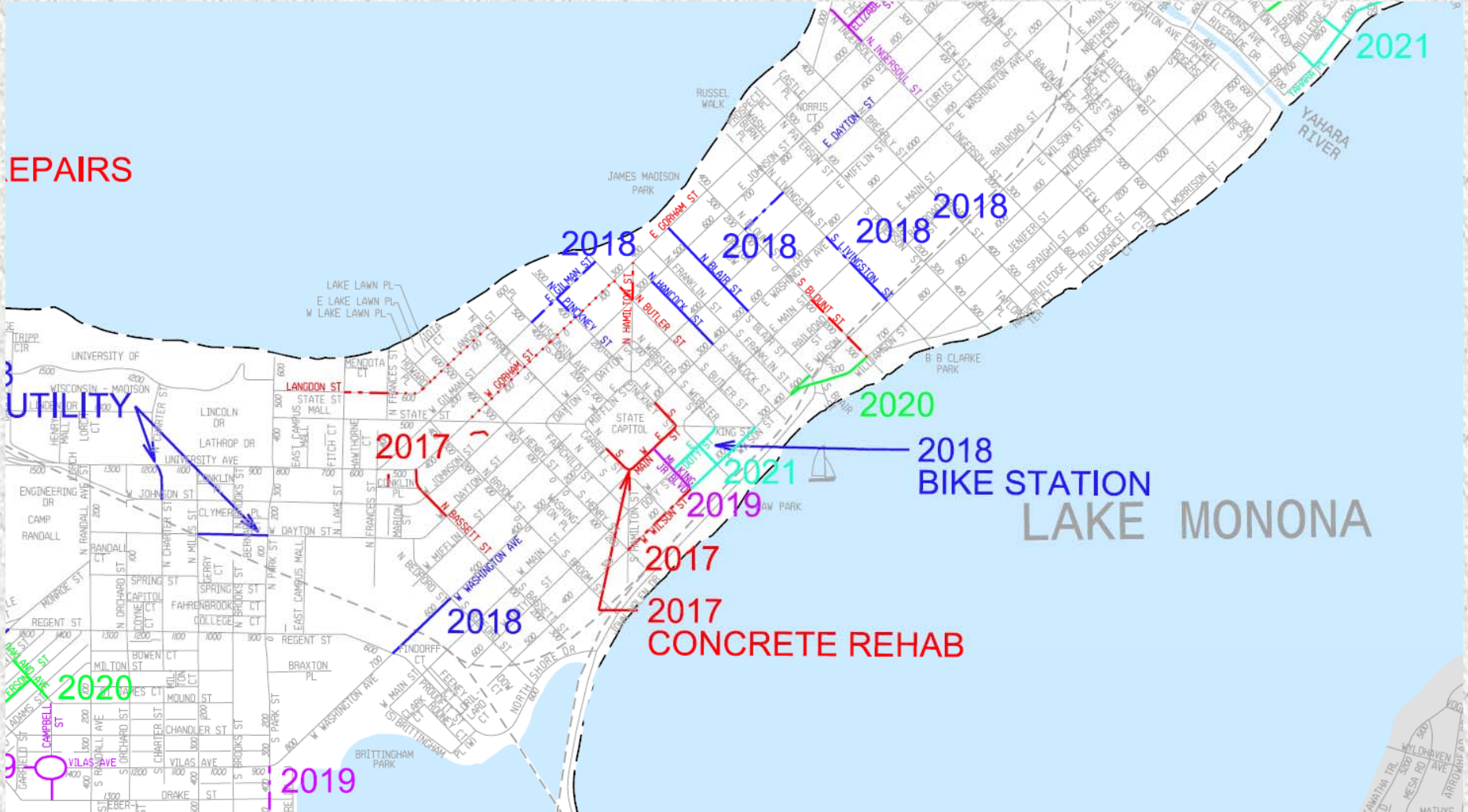
Bike Station



Wilson / Williamson



Blair Street



2022

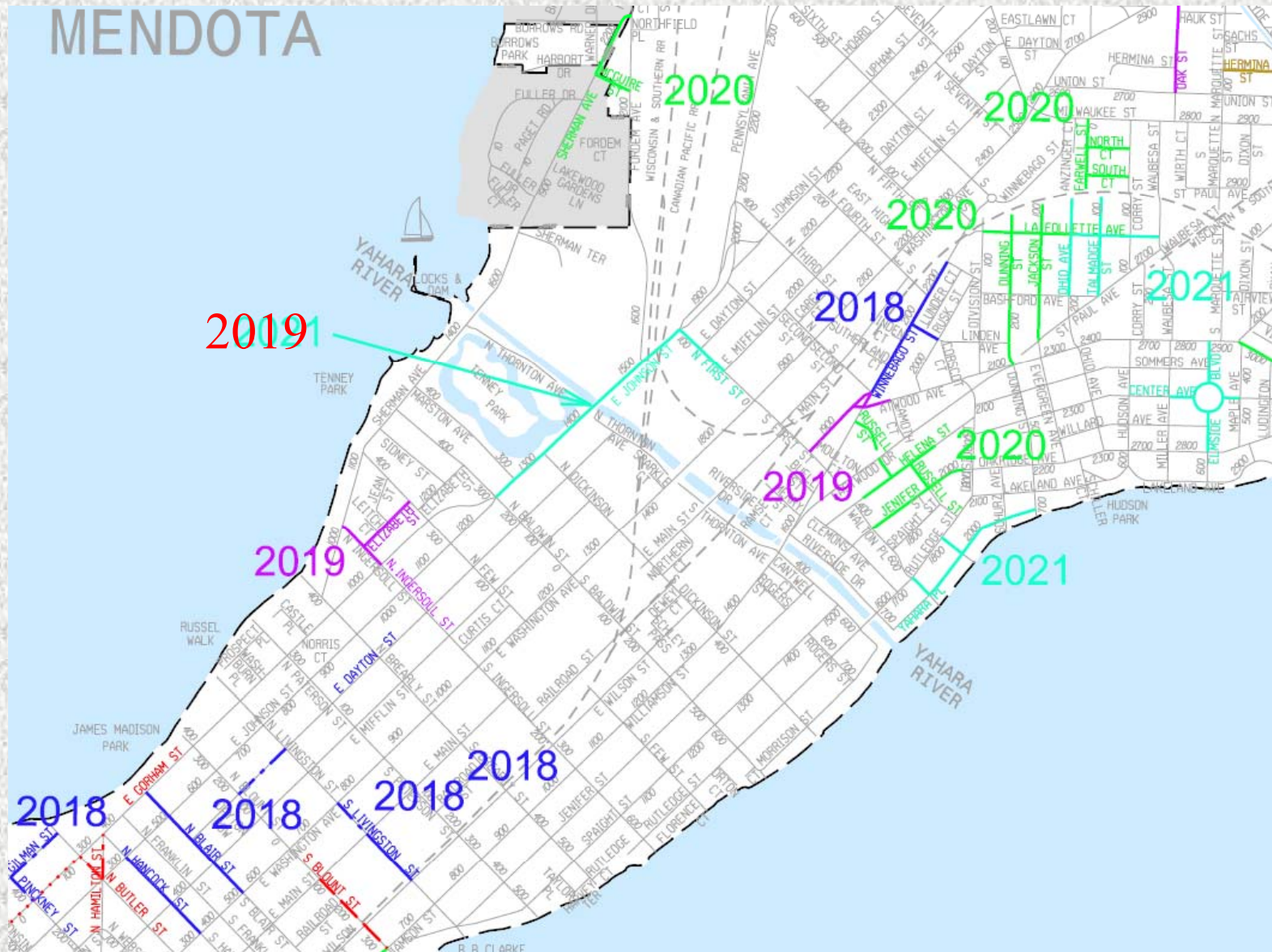


Lake Loop Olbrich Park Improvement

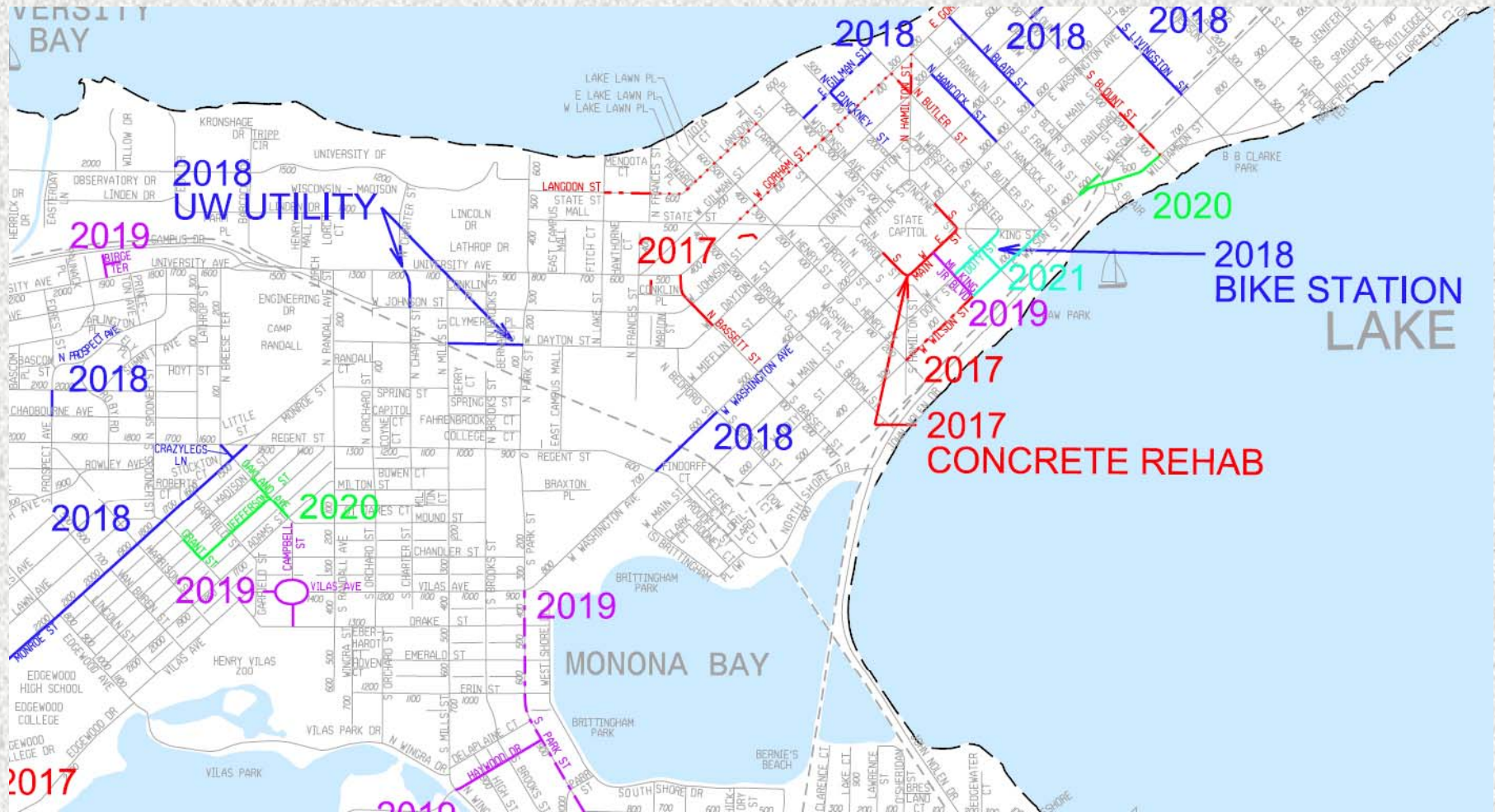


City of Madison Engineering

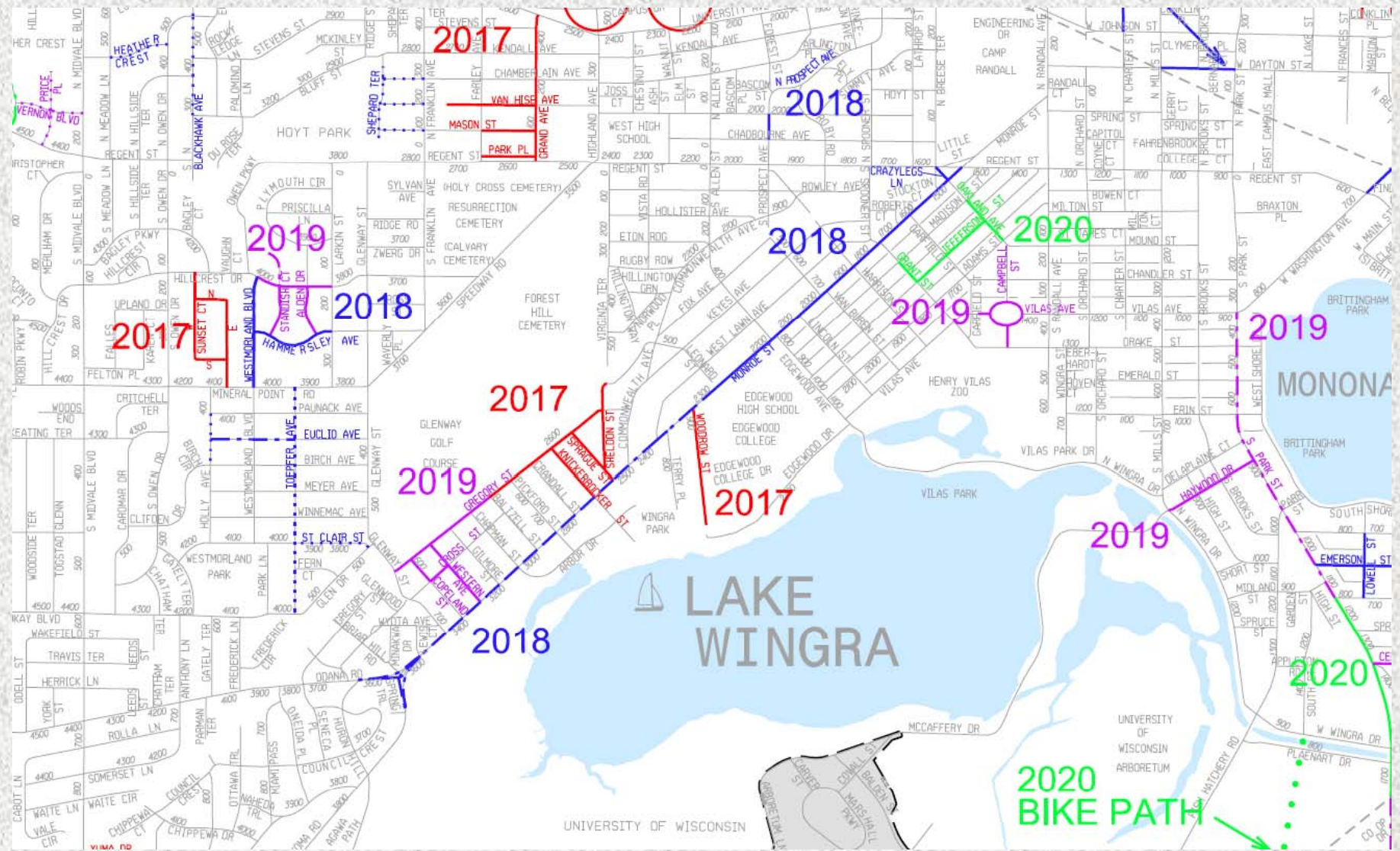
E Johnson



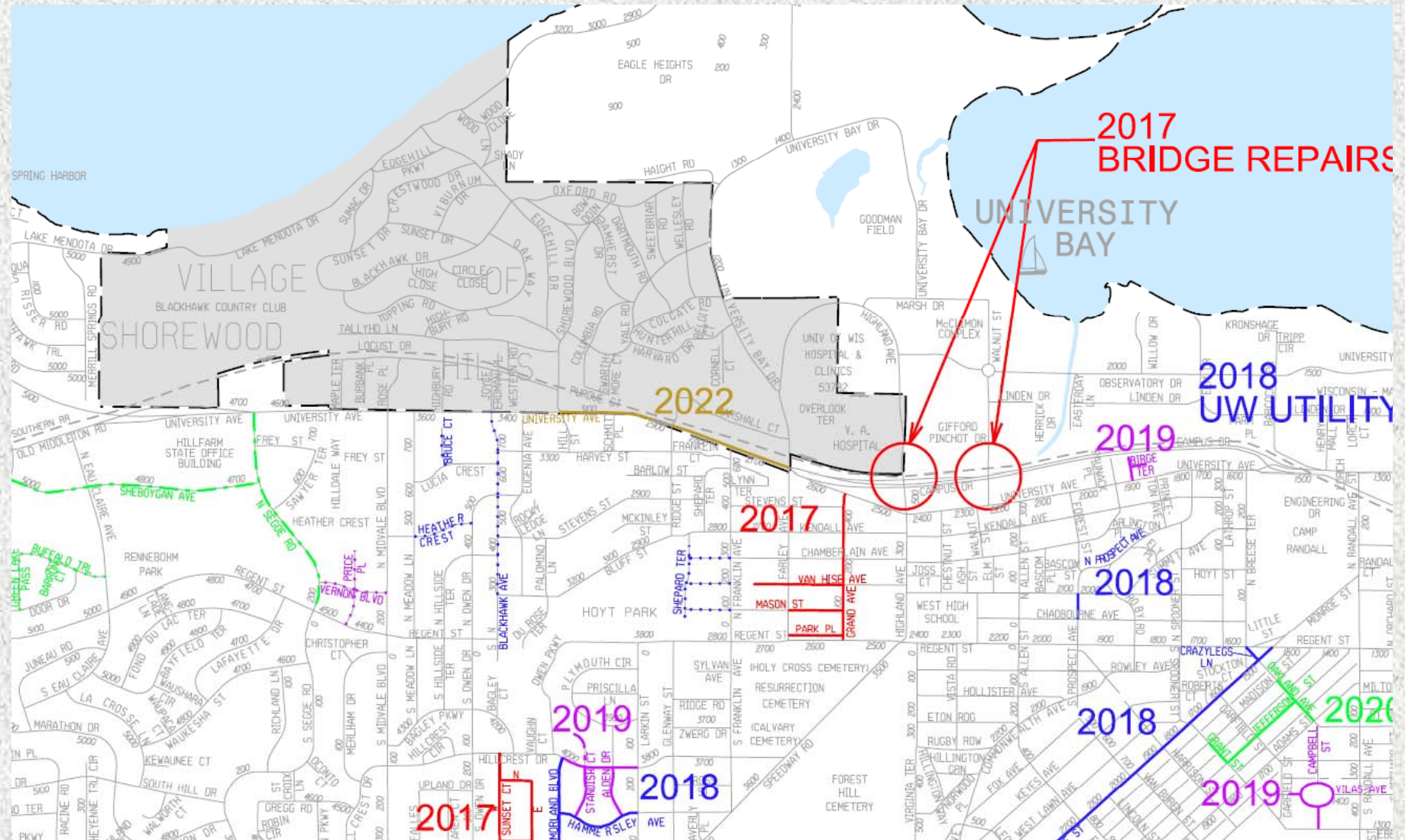
West Washington Ave



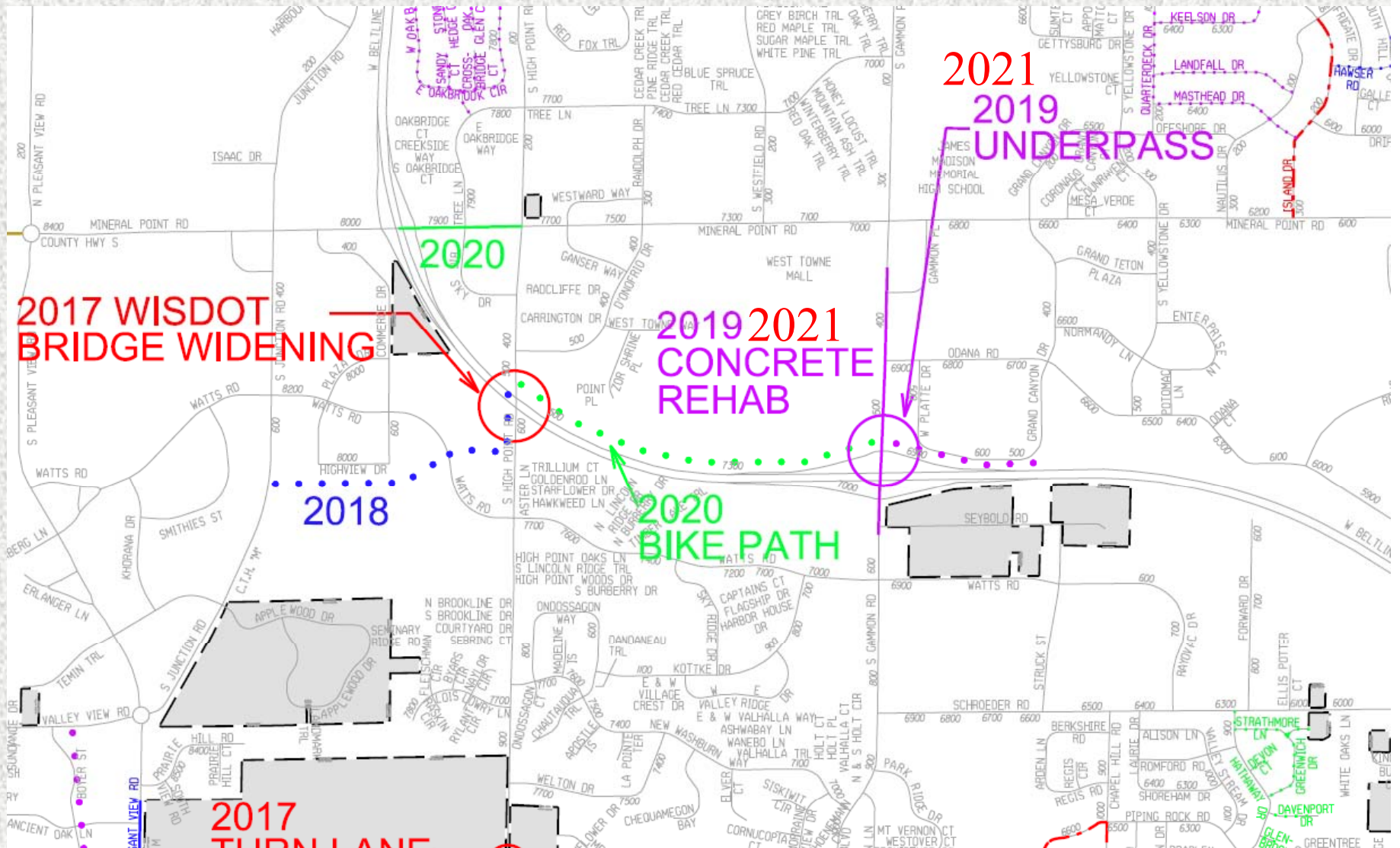
Monroe St



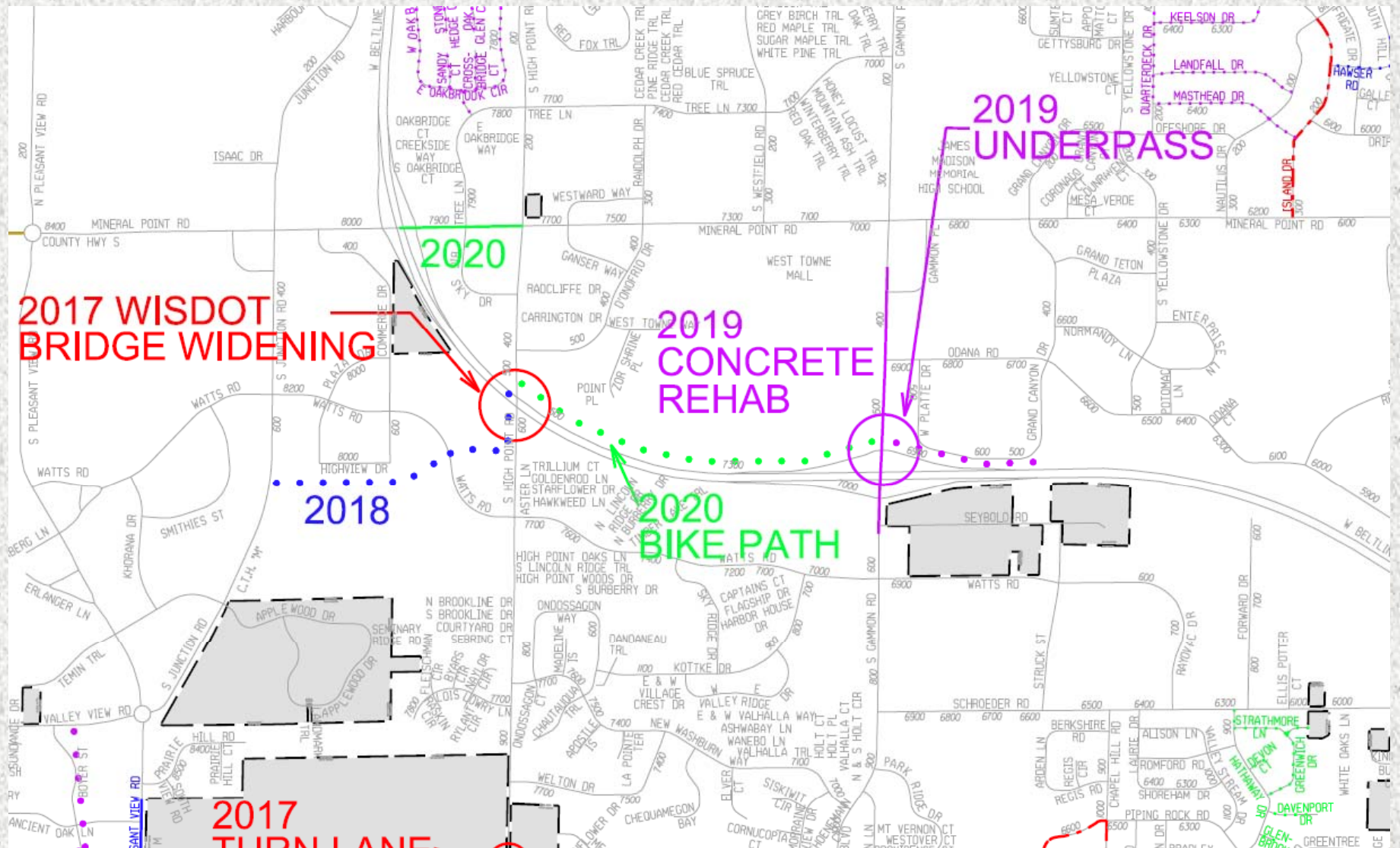
University Ave



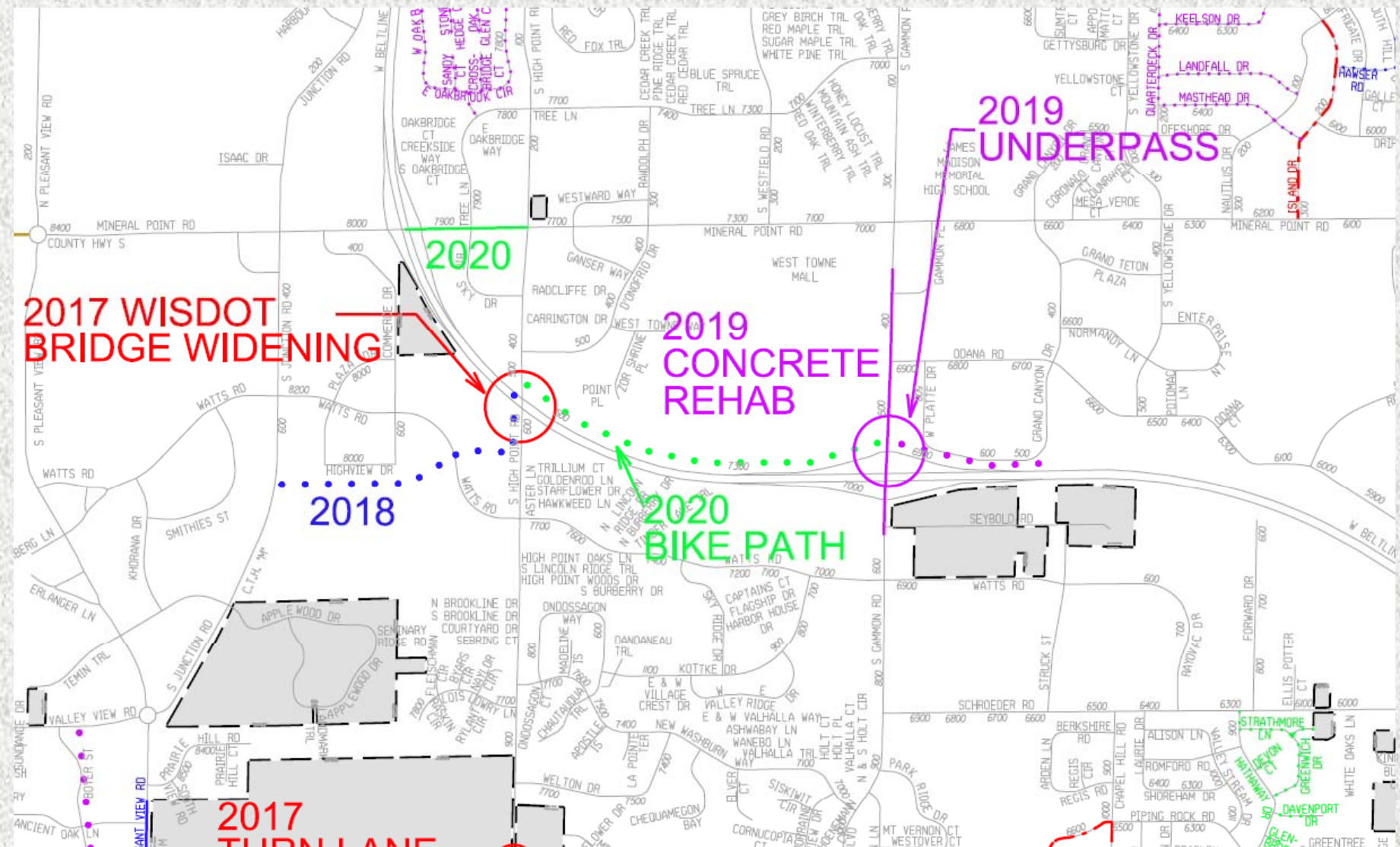
Gammon Rd / W Beltline Path

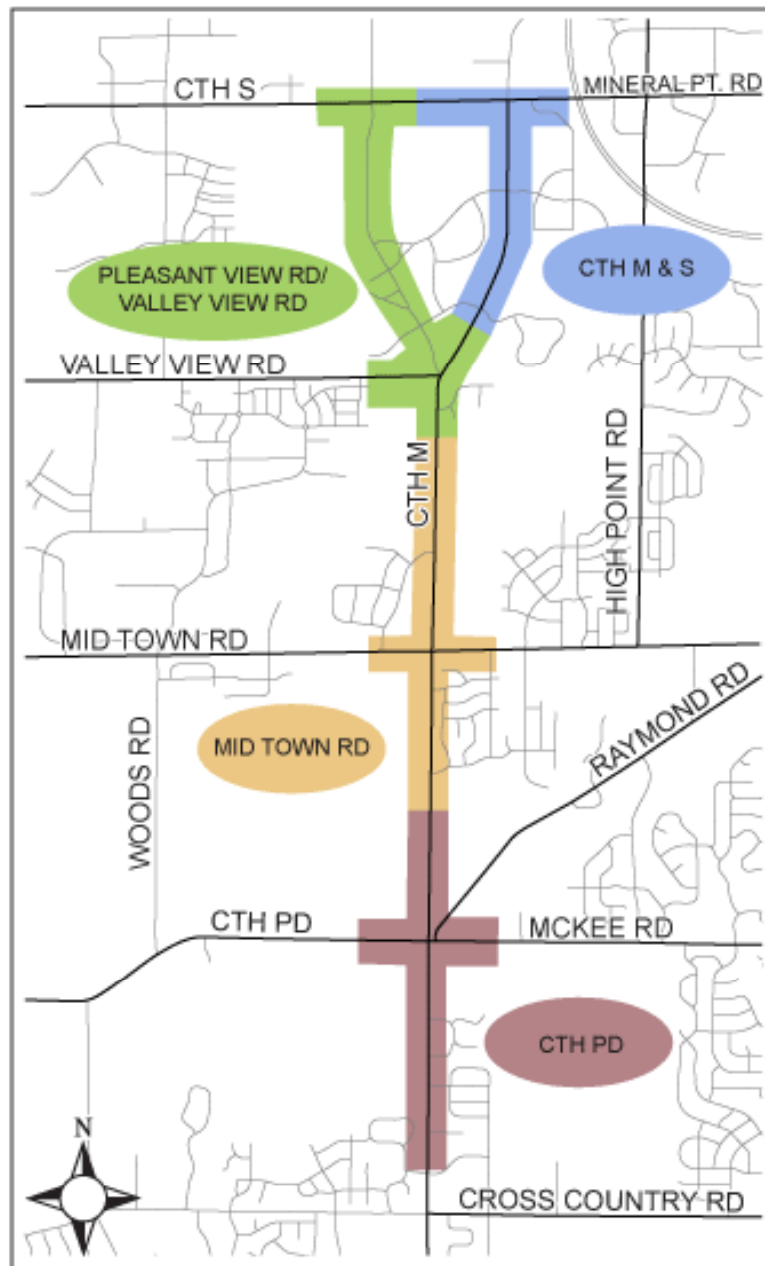


High Point Road



Mineral Point Rd





CTH M Corridor

- Project Schedule
 - 2010-2011 Pleasant View / Valley View
 - 2012-2014 CTH M & S
 - 2016-17 CTH PD Area
 - 2016-17 Mid Town Rd Area



CTH M

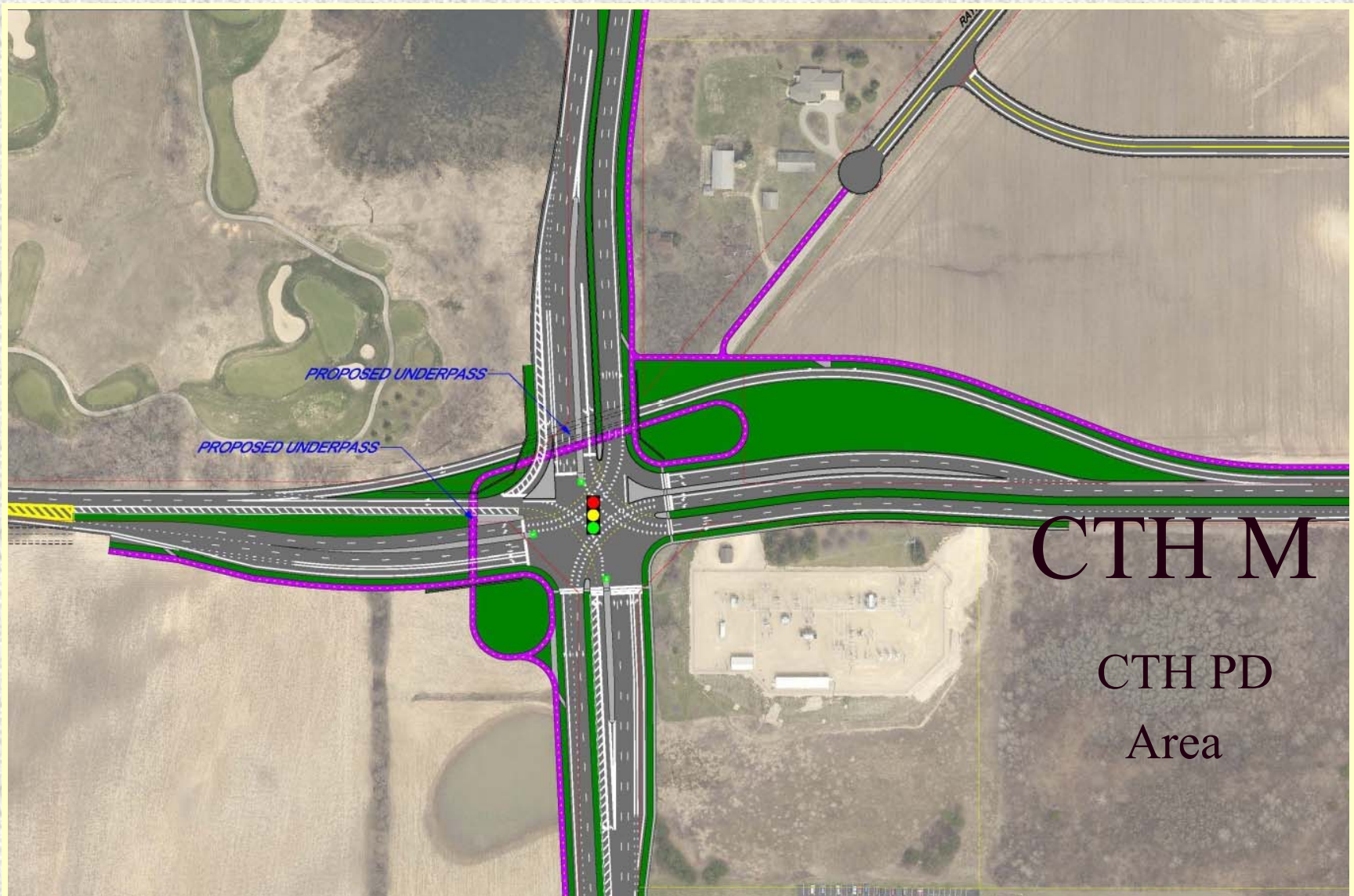
Mid Town
Area

FUTURE SIDEWALK

PROPOSED UNDERPASS

BLACK
STONE





City of Madison Engineering

CTH M

CTH-M RECONSTRUCTION PROJECT



5	8	5	11	11	11	8 - 20 (varies)	11	11	11	5	8	10
Sidewalk (potentially)	Terrace	Bike Lane	Restricted Travel Lane	Travel Lane	Travel Lane	Median	Travel Lane	Travel Lane	Restricted Travel Lane	Bike Lane	Terrace	Multi-Use Path

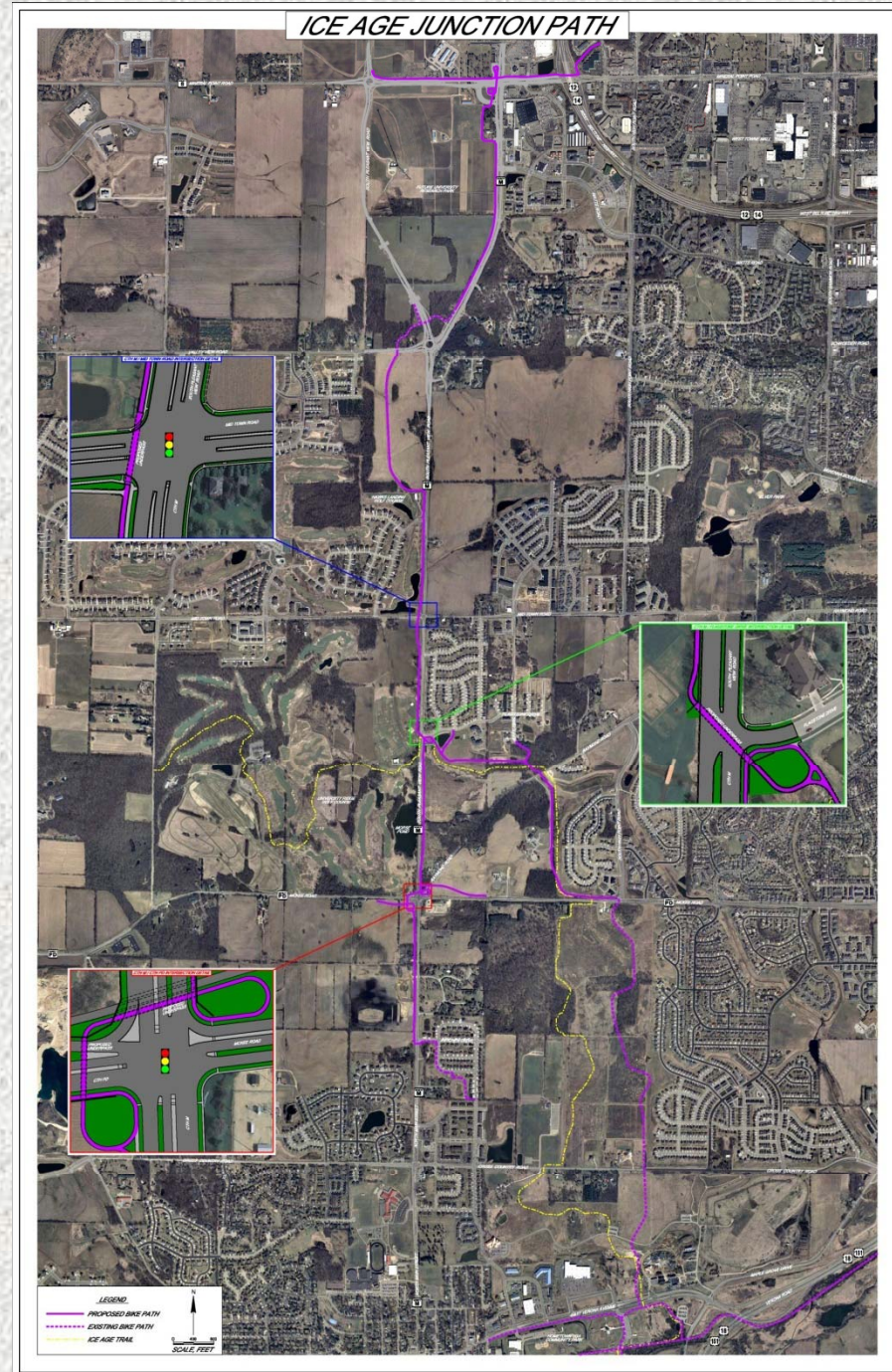
CTH PD to Flagstone Drive *(typical section)*

MSA
PROFESSIONAL SERVICES



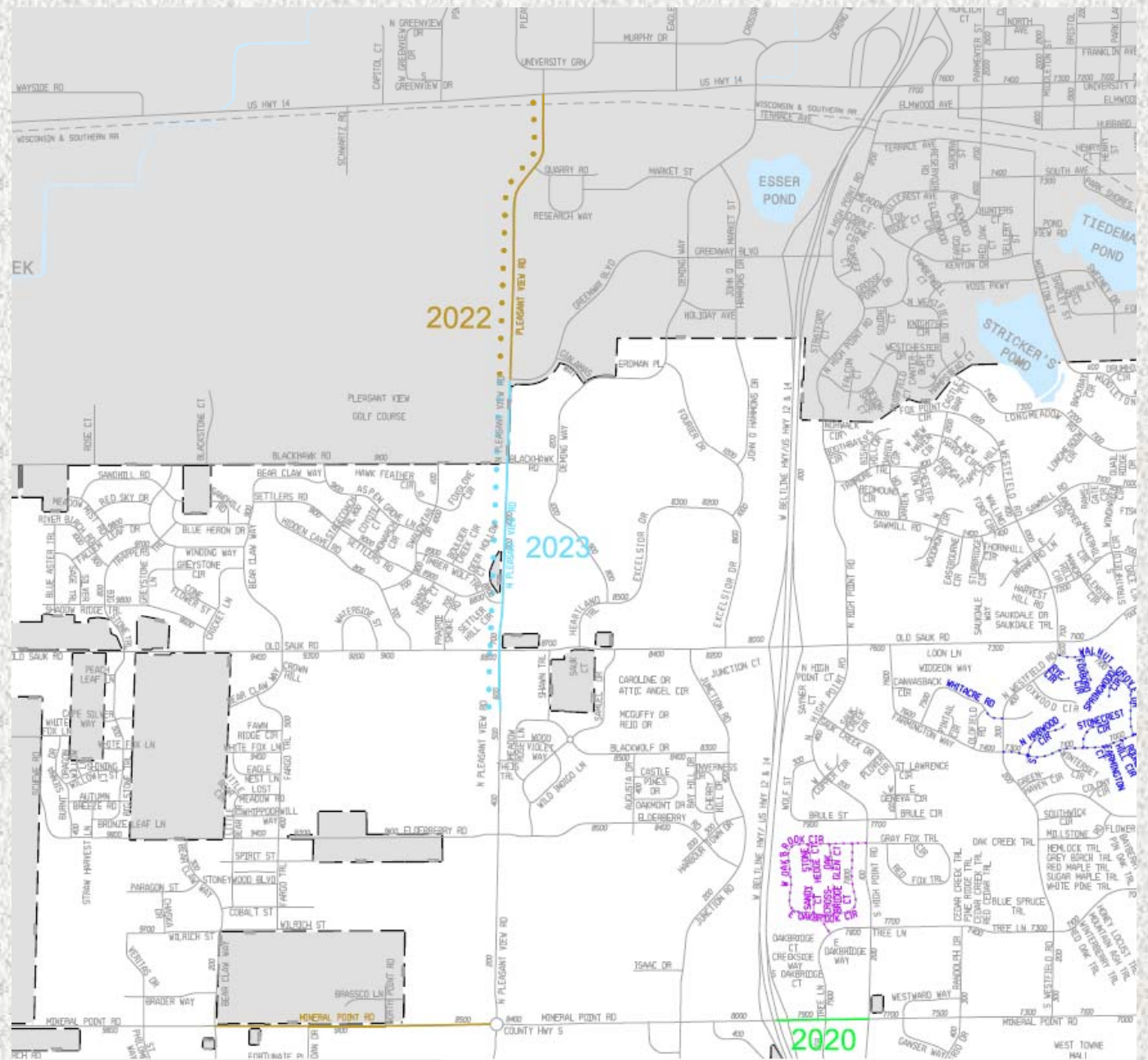
City of Madison Engineering

Ice Age & Junction Path



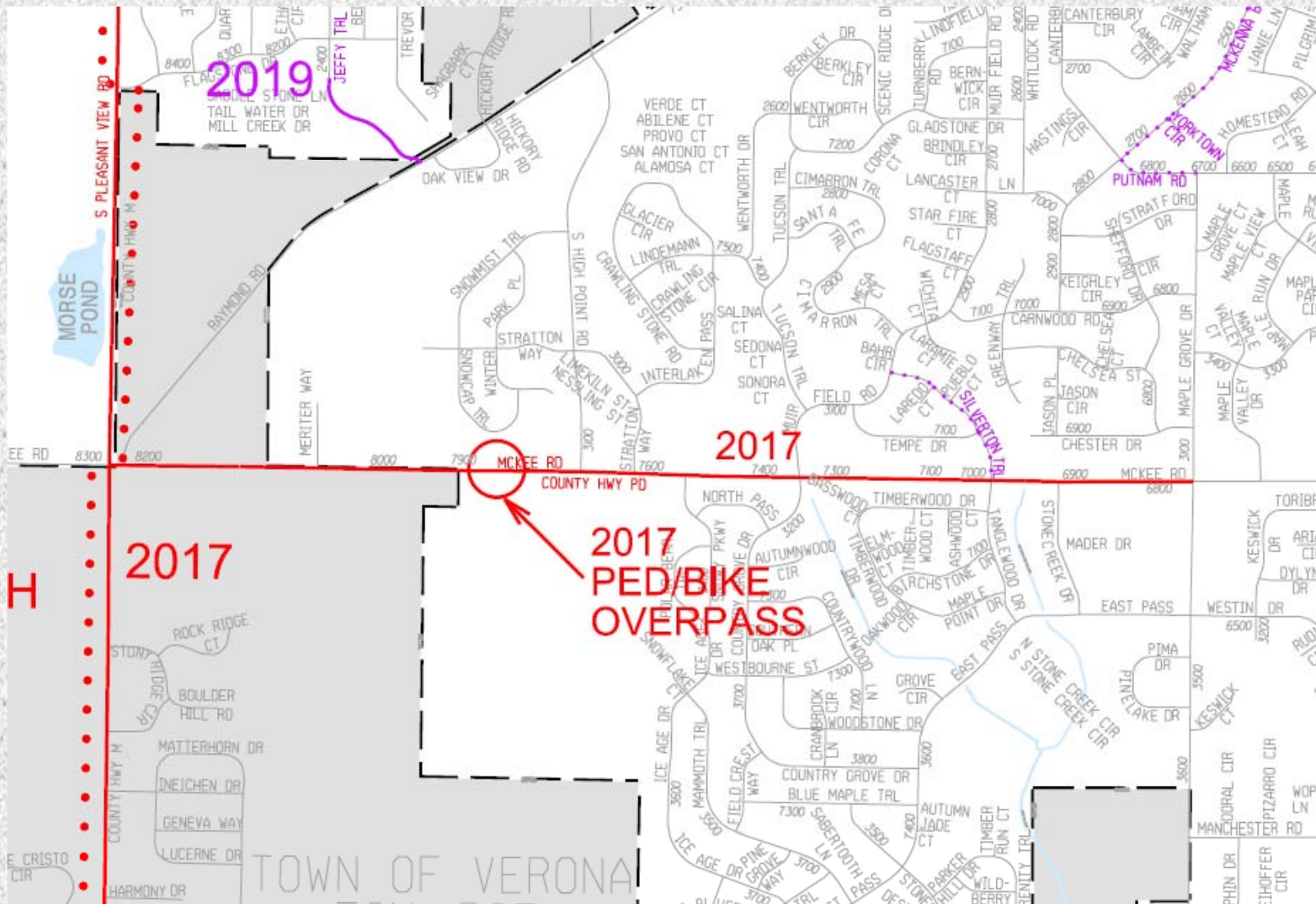
City of Madison Engineering

Pleasant View Rd

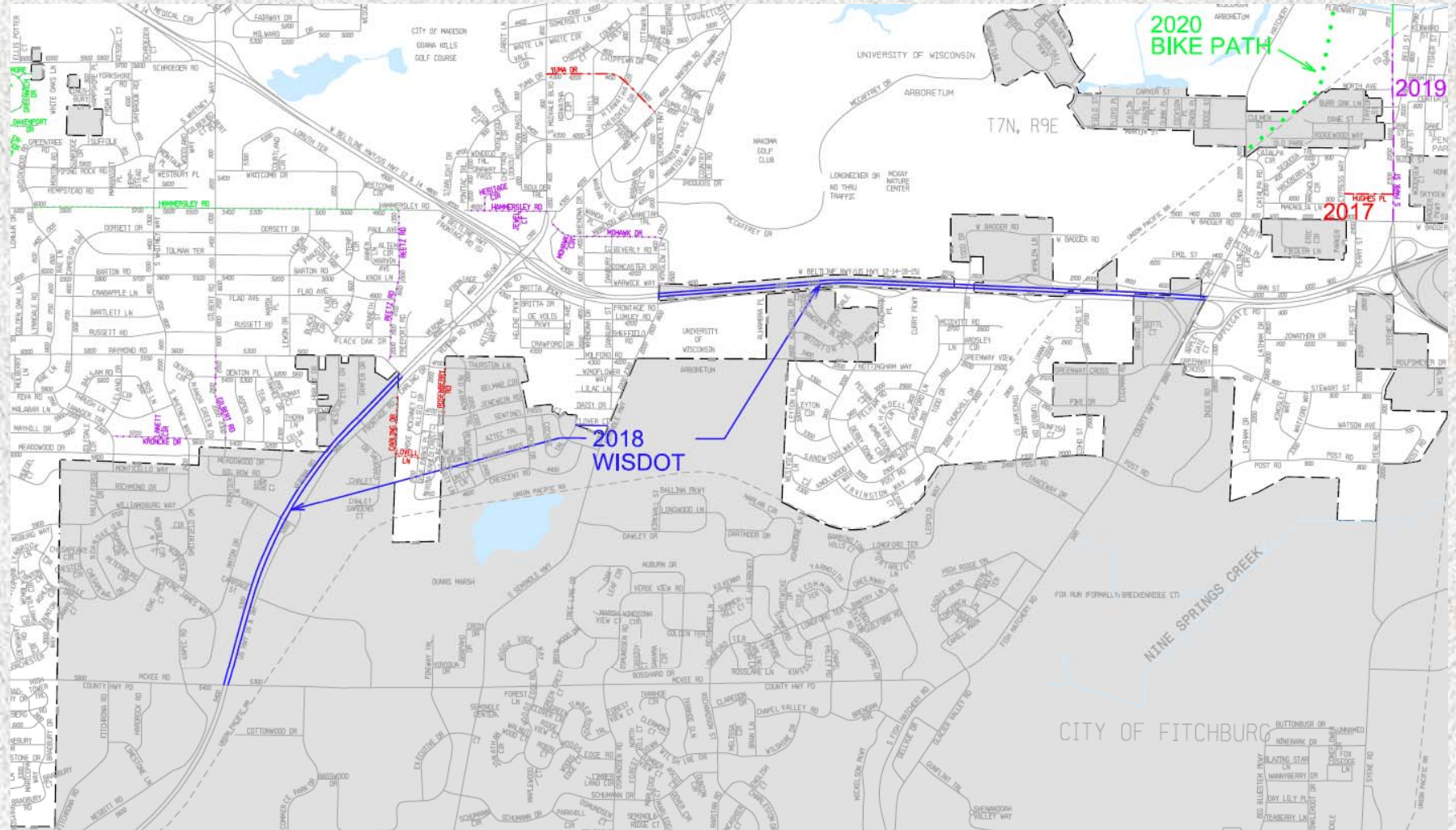


City of Madison Engineering

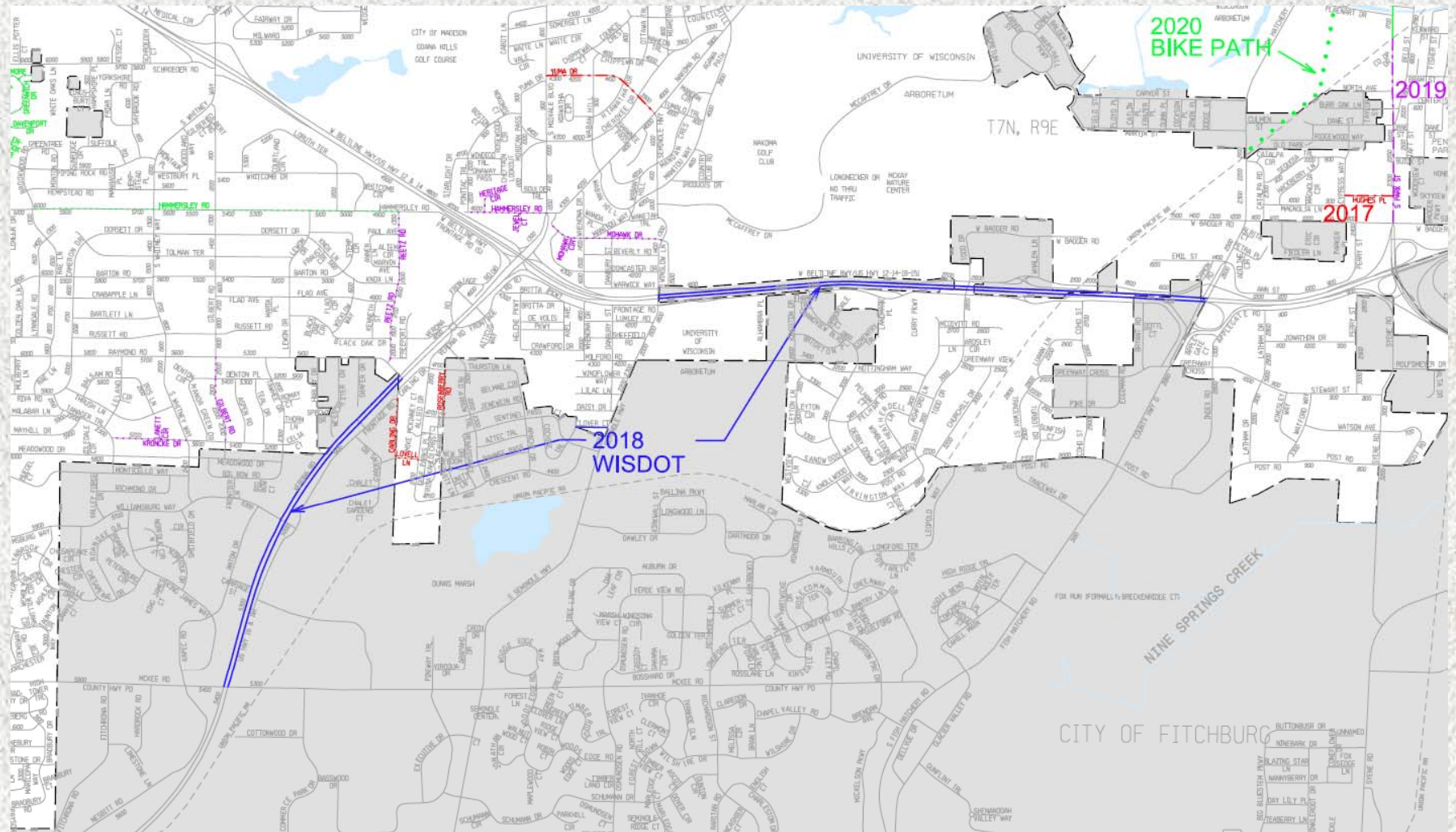
McKee Road



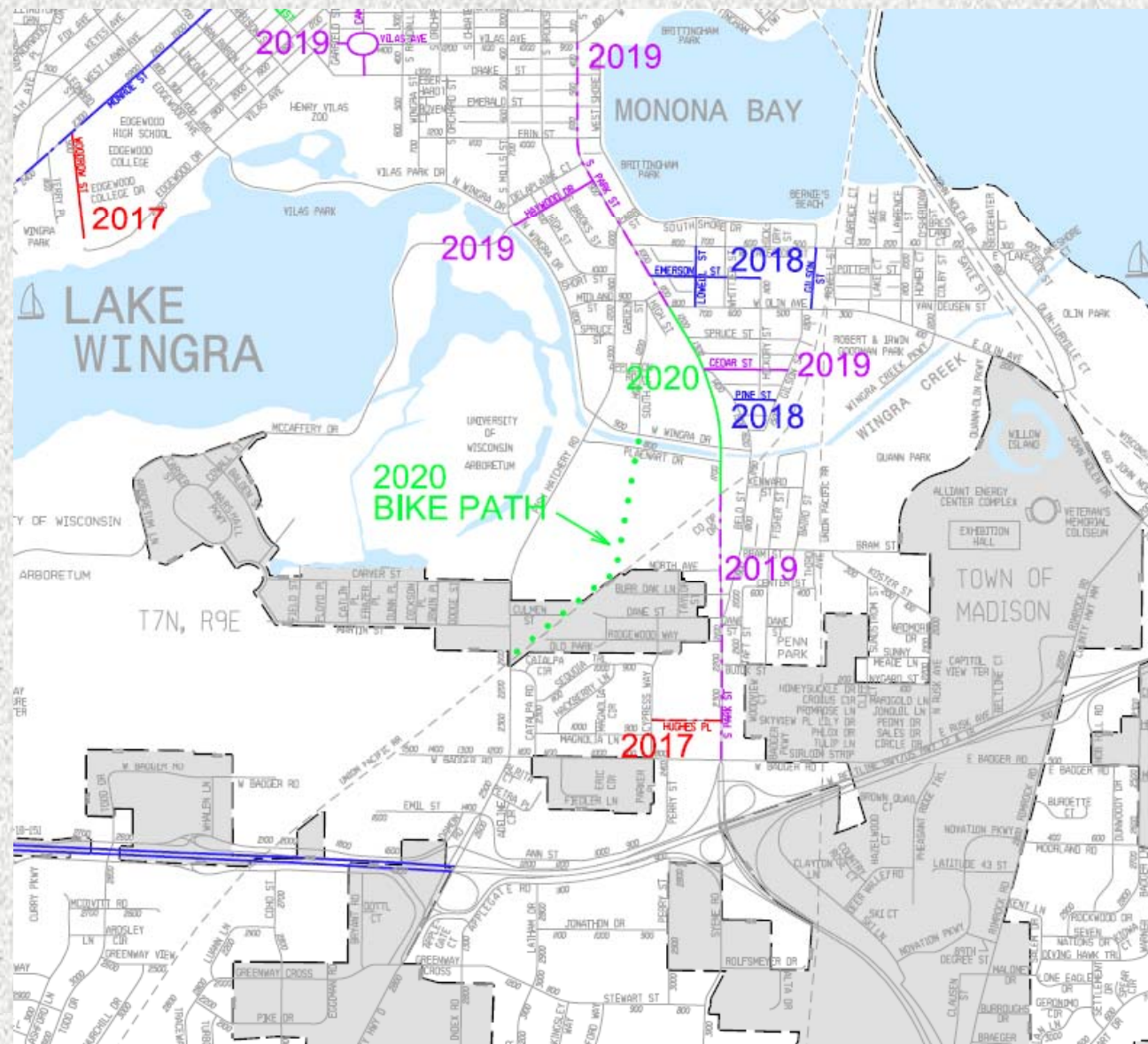
Verona Road (WisDOT)



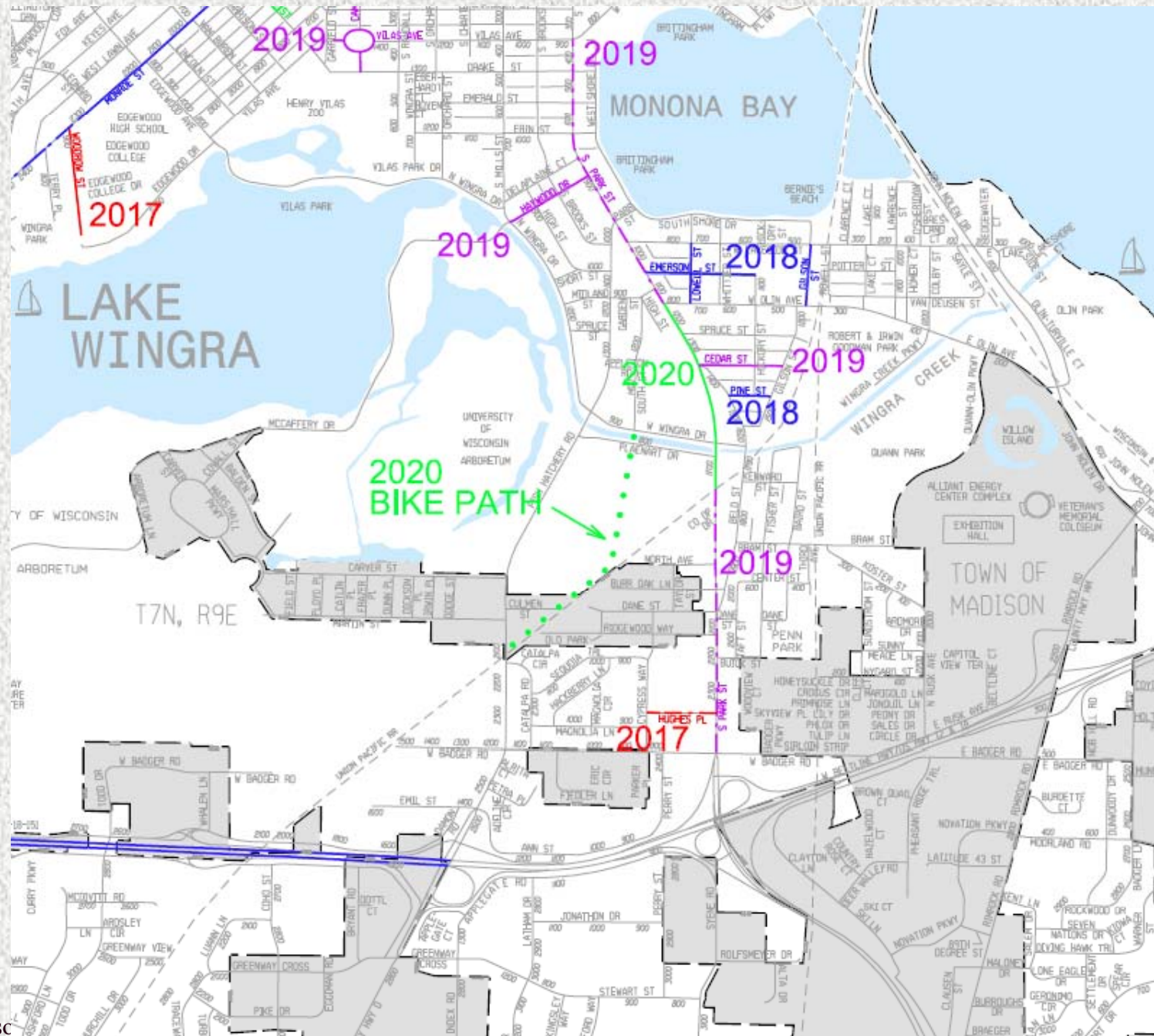
Beltline (WisDOT)



Cannonball Bike Path

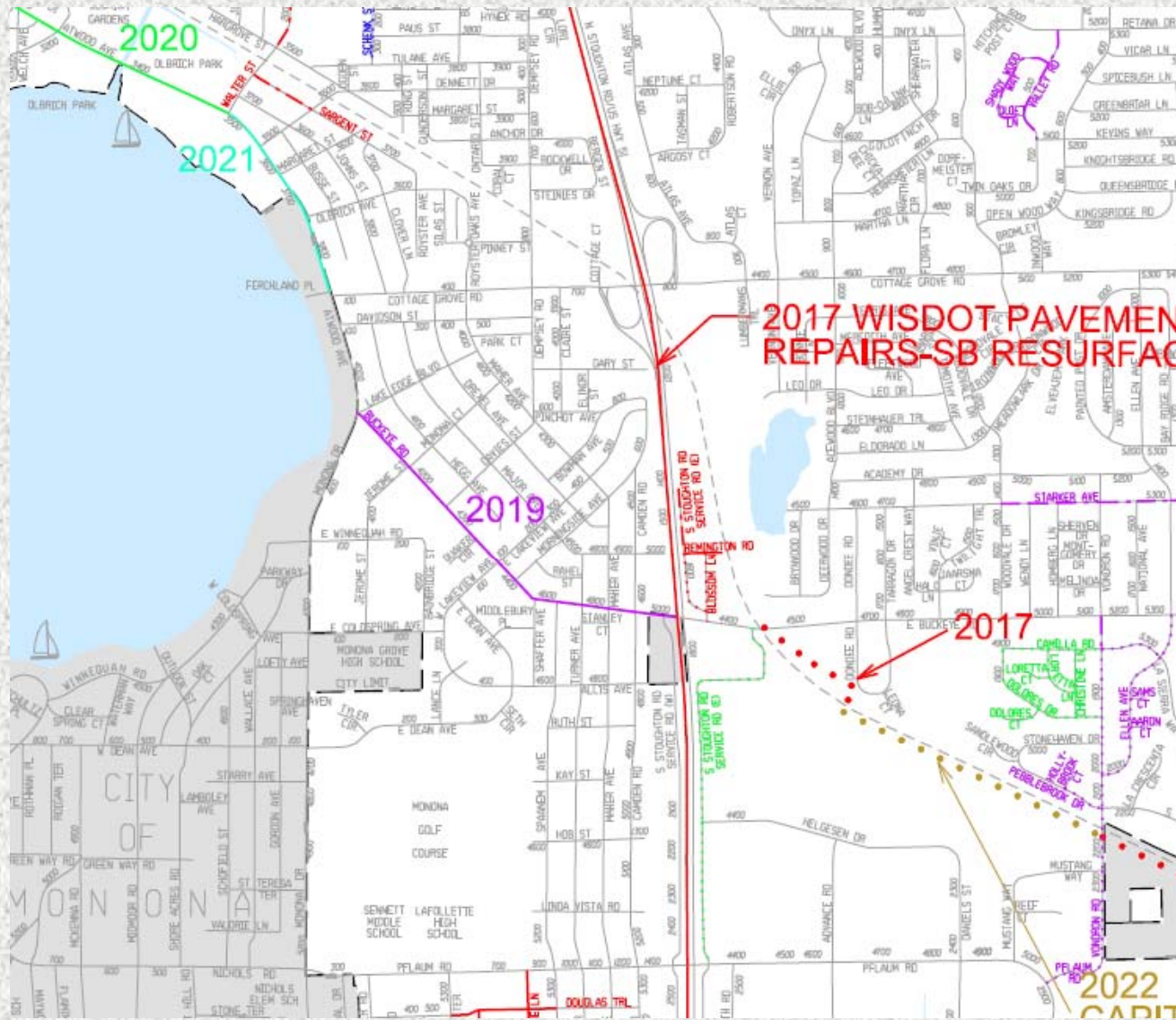


South Park Street



City of Madison

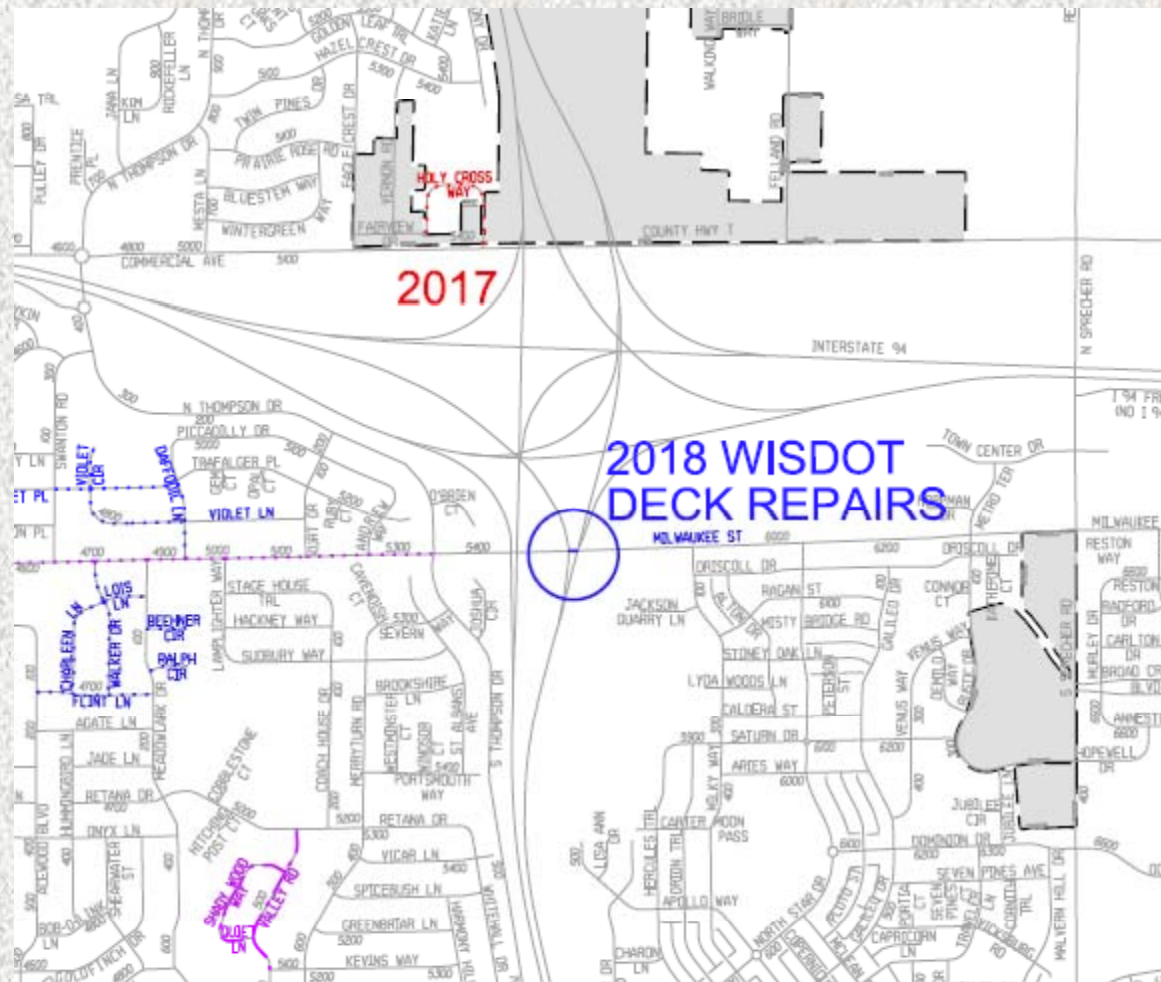
Buckeye Rd



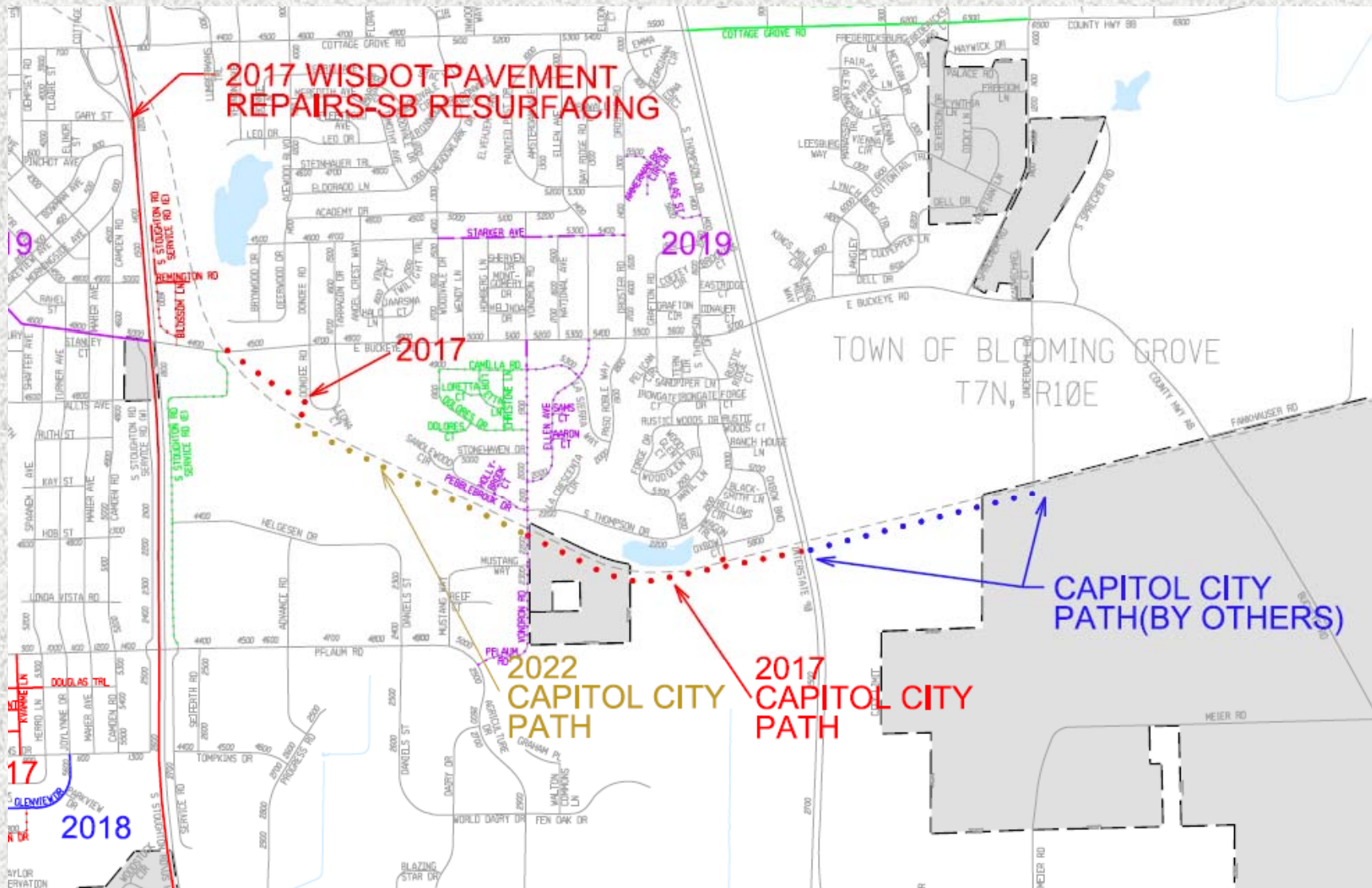
City of Madison Engineering



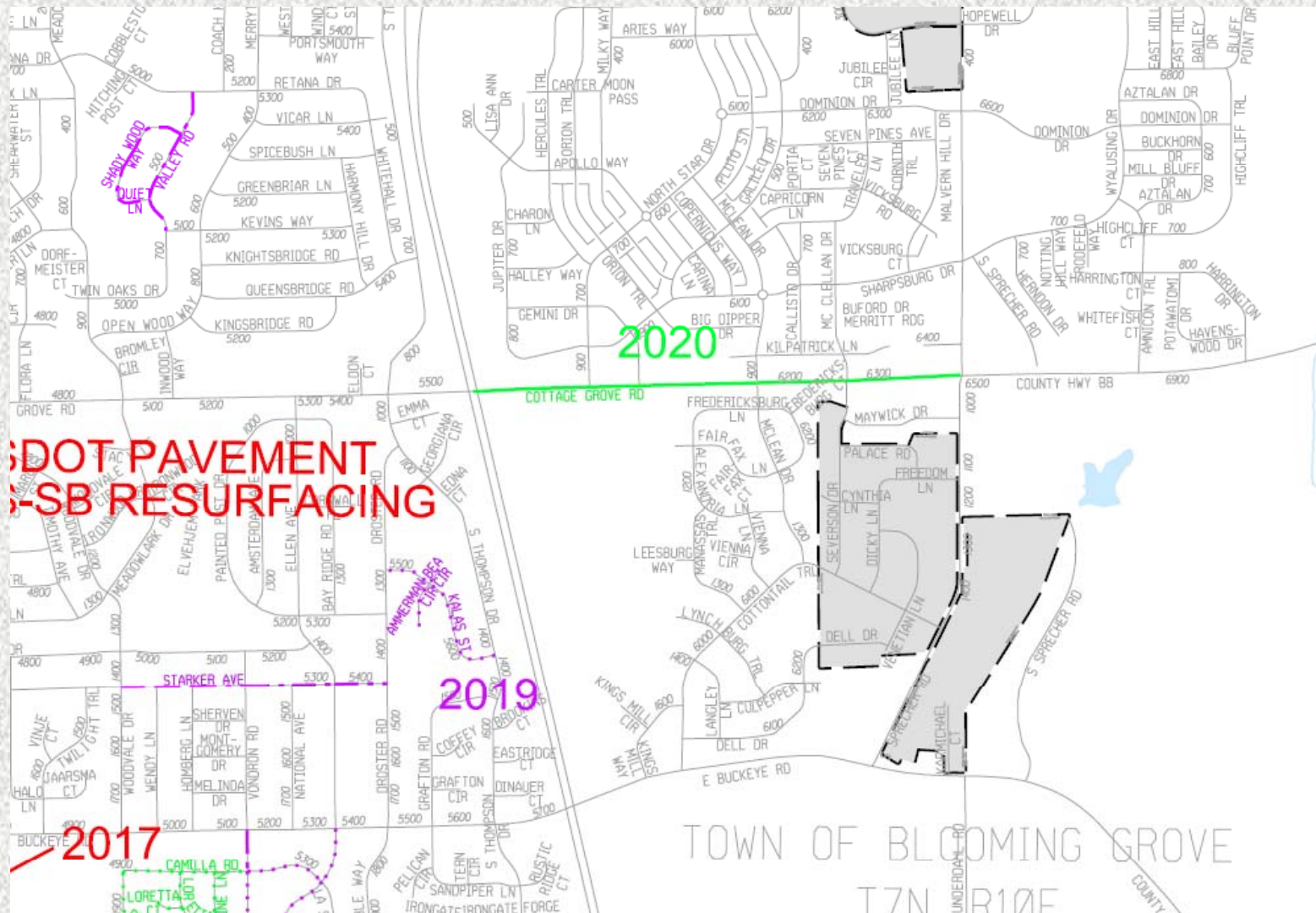
Milwaukee St Bridge – NB lanes (WisDOT)



Capital City Trail



Cottage Grove Road



WisDOT Studies

- Beltline Study
- Stoughton Road
- I39/I90
- US 12 Freeway Conversion



State of Our Streets



City of Madison Engineering

State of Our Local Streets

	Local	2001	2010	2011	2012	2013	2014	2015	2016
	% Miles at or below Cond State 10	100.0%	100.0%	100.0%	100.0%	100.0%	100.0%	100.0%	100.0%
	% Miles at or below Cond State 9	93.9%	98.6%	98.5%	98.2%	98.3%	98.8%	98.1%	98.1%
	% Miles at or below Cond State 8	88.3%	92.6%	90.5%	91.8%	92.9%	93.6%	94.9%	95.2%
	% Miles at or below Cond State 7	68.2%	56.0%	51.4%	59.4%	59.0%	70.8%	64.1%	61.6%
	% Miles at or below Cond State 6	61.8%	40.7%	38.1%	37.4%	35.8%	39.0%	41.8%	43.7%
Goal 30%	% Miles at or below Cond State 5	34.9%	28.5%	27.8%	28.1%	28.1%	27.9%	27.6%	28.4%
	% Miles at or below Cond State 4	11.6%	6.7%	9.0%	11.3%	12.4%	16.2%	17.5%	18.8%
	% Miles at or below Cond State 3	2.4%	0.6%	0.9%	0.8%	1.1%	2.8%	2.7%	2.9%
	% Miles at or below Cond State 2	0.9%	0.0%	0.0%	0.0%	0.0%	0.1%	0.1%	0.2%
	% Miles at or below Cond State 1	0.8%	0.0%	0.0%	0.0%	0.0%	0.0%	0.0%	0.0%
	% Miles at or below Cond State 0	0.4%	0.0%	0.0%	0.0%	0.0%	0.0%	0.0%	0.0%

Goal: less than 30% of total miles of local streets at or below 5



State of Our Collector Streets

	Collector	2001	2010	2011	2012	2013	2014	2015	2016
	% Miles at or below Cond State 10	100.0%	100.0%	100.0%	100.0%	100.0%	100.0%	100.0%	100.0%
	% Miles at or below Cond State 9	94.2%	96.9%	95.9%	98.2%	98.8%	98.2%	96.4%	97.1%
	% Miles at or below Cond State 8	86.1%	89.0%	87.4%	89.6%	90.9%	92.3%	90.8%	93.1%
	% Miles at or below Cond State 7	58.3%	48.5%	44.2%	52.3%	51.4%	64.6%	58.8%	51.7%
	% Miles at or below Cond State 6	48.6%	32.4%	30.9%	32.6%	33.1%	39.8%	39.0%	41.4%
Goal 20%	% Miles at or below Cond State 5	27.8%	19.3%	20.5%	19.3%	21.1%	21.7%	18.9%	22.7%
	% Miles at or below Cond State 4	6.0%	4.7%	6.2%	8.6%	9.1%	10.9%	9.1%	9.5%
	% Miles at or below Cond State 3	0.3%	0.8%	1.0%	1.3%	1.0%	4.8%	2.9%	2.8%
	% Miles at or below Cond State 2	0.0%	0.0%	0.0%	0.0%	0.0%	0.0%	0.0%	0.0%
	% Miles at or below Cond State 1	0.0%	0.0%	0.0%	0.0%	0.0%	0.0%	0.0%	0.0%
	% Miles at or below Cond State 0	0.0%	0.0%	0.0%	0.0%	0.0%	0.0%	0.0%	0.0%

Goal: less than 20% of total miles of collector streets at or below 5



State of Our Arterial Streets

	Arterial	2001	2010	2011	2012	2013	2014	2015	2016
	% Miles at or below Cond State 10	100.0%	100.0%	100.0%	100.0%	100.0%	100.0%	100.0%	100.0%
	% Miles at or below Cond State 9	98.3%	92.0%	87.2%	88.8%	97.3%	97.6%	98.0%	97.9%
	% Miles at or below Cond State 8	87.0%	76.6%	69.3%	75.9%	80.0%	84.7%	89.8%	89.7%
	% Miles at or below Cond State 7	58.4%	47.0%	36.1%	41.6%	44.7%	60.4%	56.4%	46.1%
	% Miles at or below Cond State 6	46.3%	28.2%	17.9%	22.9%	24.4%	32.7%	37.8%	38.9%
Goal 15%	% Miles at or below Cond State 5	23.3%	15.8%	10.2%	10.0%	11.8%	16.5%	18.4%	23.0%
	% Miles at or below Cond State 4	2.0%	8.1%	3.6%	4.6%	5.0%	6.3%	7.1%	7.5%
	% Miles at or below Cond State 3	0.5%	0.8%	1.0%	1.0%	0.2%	1.9%	2.4%	2.3%
	% Miles at or below Cond State 2	0.5%	0.0%	0.0%	0.0%	0.0%	0.0%	0.0%	0.0%
	% Miles at or below Cond State 1	0.5%	0.0%	0.0%	0.0%	0.0%	0.0%	0.0%	0.0%
	% Miles at or below Cond State 0	0.5%	0.0%	0.0%	0.0%	0.0%	0.0%	0.0%	0.0%

Goal: less than 15% of total miles of arterial streets at or below 5



Comments or Project Suggestions

