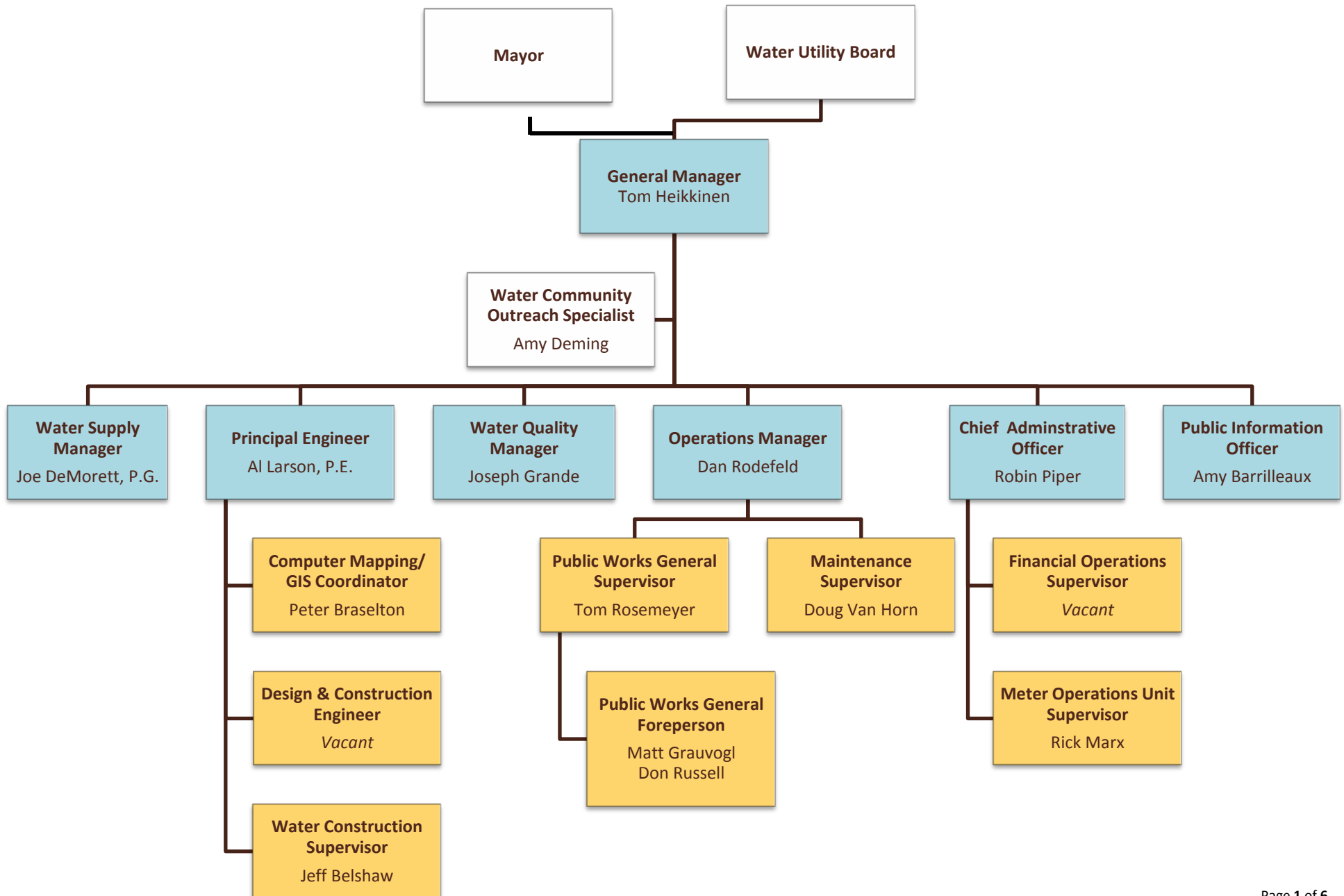
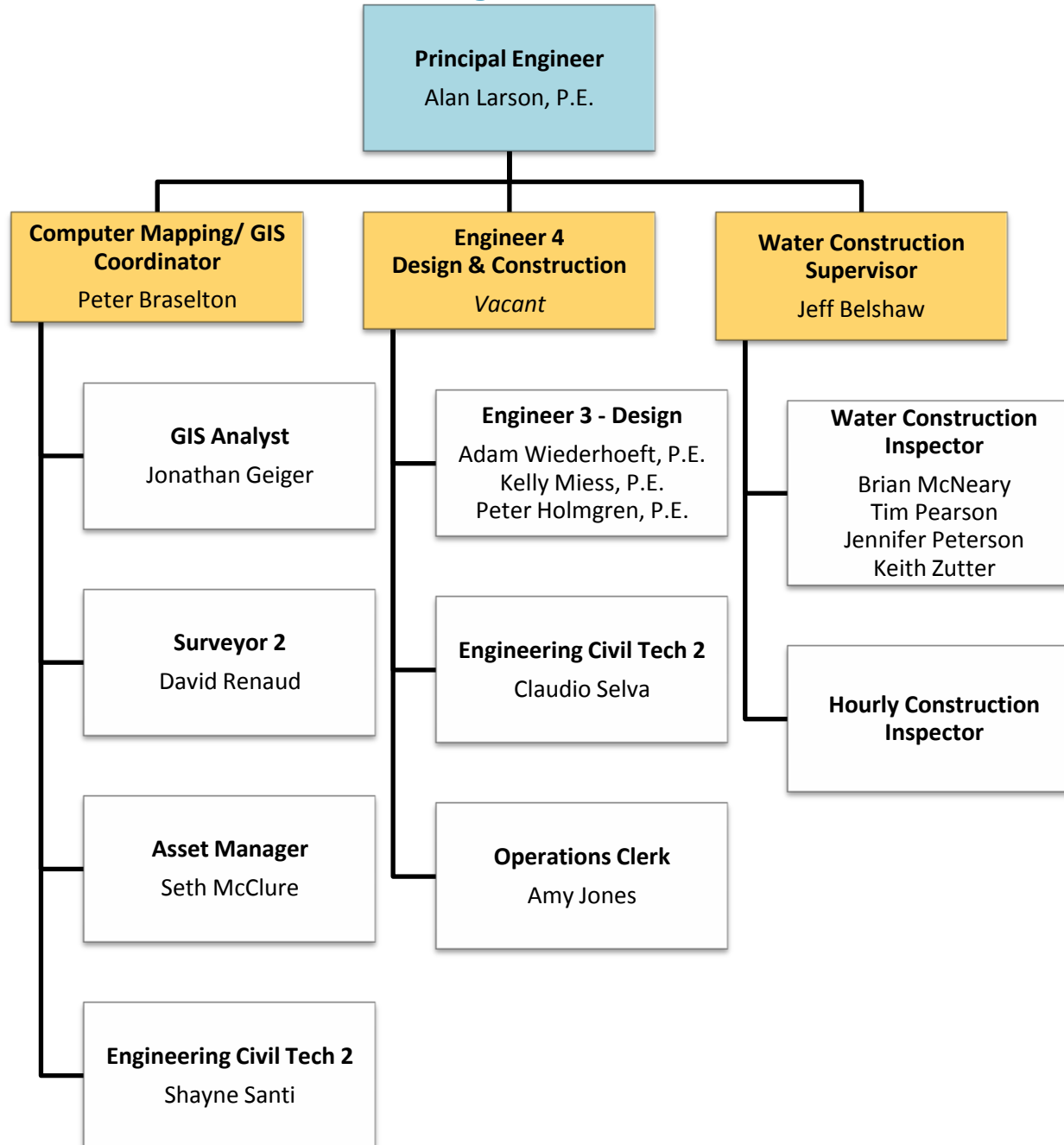


# MWU Organizational Chart



# MWU Organizational Chart



## MWU Organizational Chart

### Water Quality Manager

Joseph Grande

#### Water Quality Aide

Kevin Miller  
Ken Tarver

#### Cross Connection Control Inspector

Harley Lemkuil  
Theresa Peters  
Glenn Puntney

#### Water Quality Program Specialist

Marie Van Aartsen

### Water Supply Manager

Joe DeMorett, P.G.

#### Electronic Maintenance Technician

John Terasa

#### Control Systems Engineer

Chris Wilkins

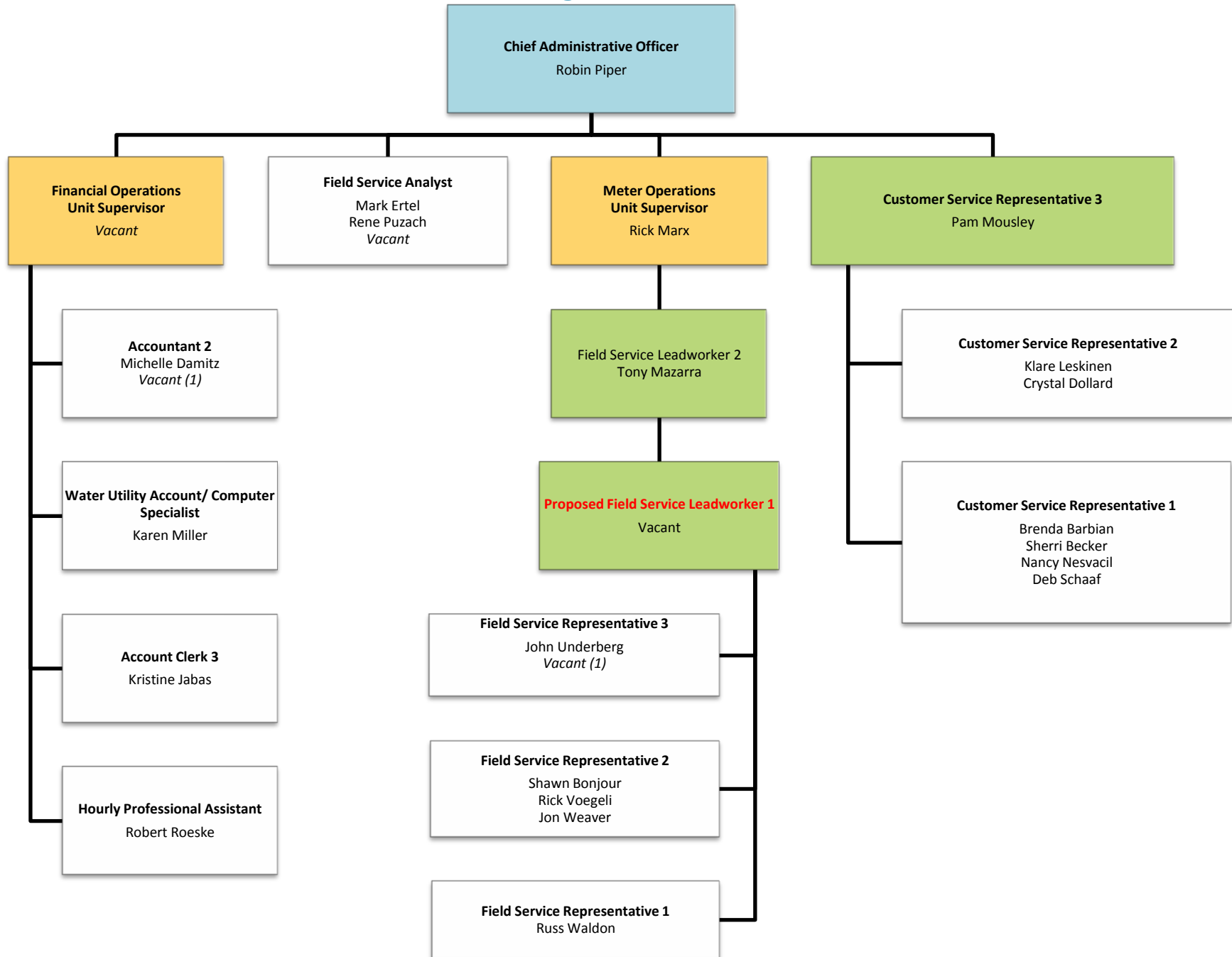
#### Waterworks Operator 2

Tom Arneson  
Jack Henderson  
David Lynch  
Karmjit Singh  
Kara Jafferis (Trainee)

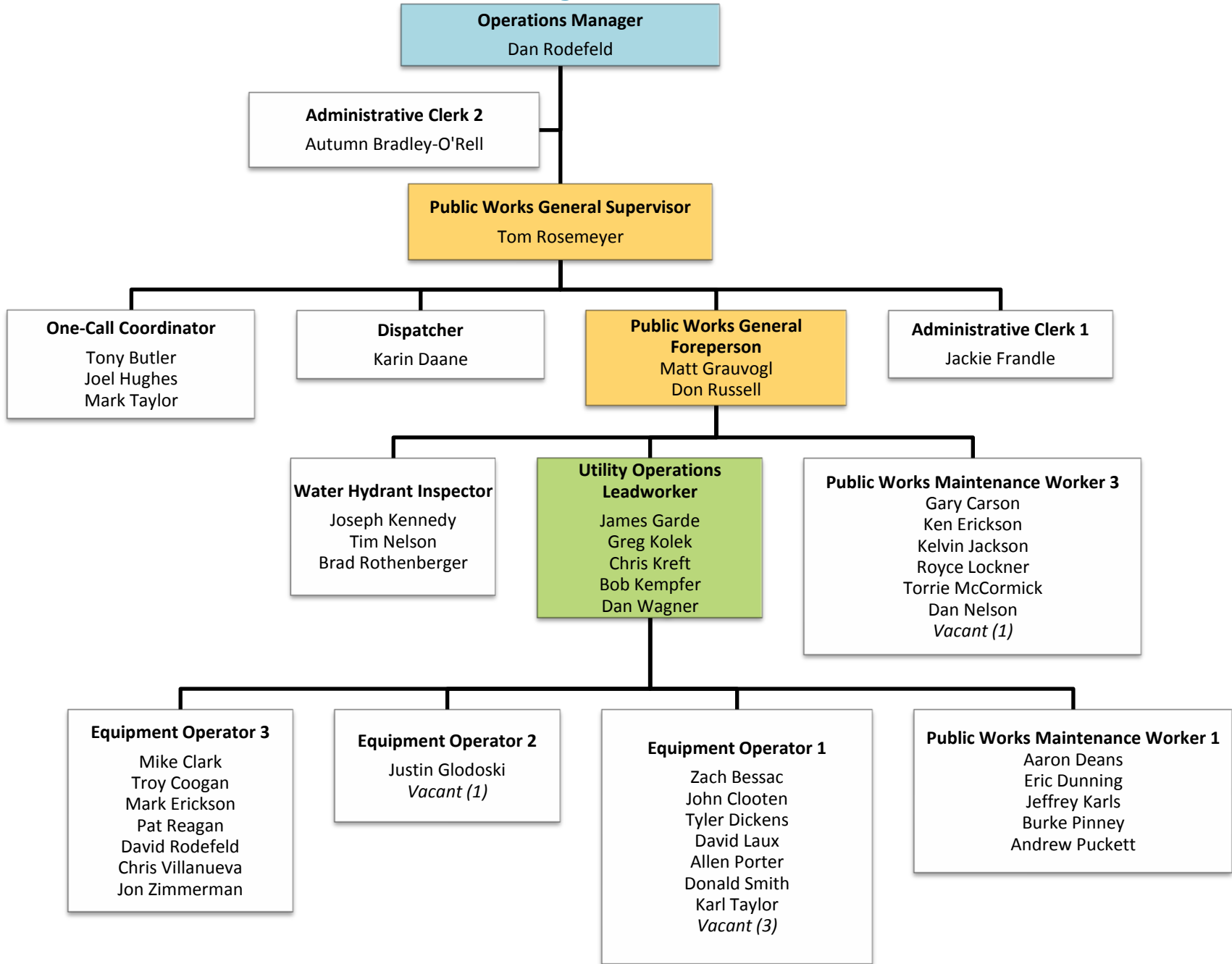
#### Waterworks Operator 1

Eric Cooper  
Dino Lucas  
Chris Schenk  
*Vacant (1)*

# MWU Organizational Chart



# MWU Organizational Chart



# MWU Organizational Chart

