

# **Downtown Madison Bicycle & Moped Parking Study**

## **DRAFT February 14, 2017**

### **Appendix C**

### **Recommended Bicycle Rack Location Maps**

The maps in this appendix display the locations of additional bicycle racks recommended in Table 7 of Chapter 5. Rack locations are approximate and may require verification and adjustment by city staff.

**Downtown Madison Bicycle & Moped Parking Study - DRAFT**

*Table 7: Recommended bicycle parking locations.*

<b>ID</b>	<b>Recommended Rack</b>	<b>Capacity</b>	<b>Notes / Potential Constraints</b>	<b>Placement</b>
<b>Map C-1 State Street, 600 Block</b>				
2	Wheelwell, double sided	5	On N Lake St, 300 block	Terrace
21	Wheelwell, single sided	3		Terrace
22	Wheelwell, double sided	7		Terrace
23	Wheelwell, single sided	5		Terrace
24	Wheelwell, double sided	7		Terrace
25	Wheelwell, single sided	5		Terrace
35	Wheelwell, single sided	4	10 feet clearance between planter and crosswalk apron	Terrace
36	Wheelwell, double sided	7		Terrace
37	Wheelwell, double sided	5	On N Frances St, 400 block	Terrace
<b>Map C-2 N Frances Street, 400 Block</b>				
3	Wheelwell, double sided	5		Terrace
29	Wheelwell, single sided	3		Terrace
39	Wheelwell, single sided	4		Terrace
40	Wheelwell, single sided	5		Terrace
41	Wheelwell, single sided	5		Terrace
<b>Map C-3 State Street, 500 Block</b>				
26	Wheelwell, double sided	7	On N Frances, 300 block Vent; May conflict with Saturday vending permit E7	In line with existing racks
27	Wheelwell, single sided	3		Terrace
28	Wheelwell, single sided	5	May conflict with café (Monday's)	Terrace
38	Wheelwell, single sided	5		Terrace
42	Wheelwell, single sided	5		Terrace
<b>Map C-4 W Gilman Street, 400 Block</b>				
30	Wheelwell, double sided	5		Terrace
43	Wheelwell, single sided	5		Terrace
44	Wheelwell, single sided	5		Terrace
45	Wheelwell, single sided	5		Terrace
<b>Map C-5 State Street, 400 Block</b>				
46	Wheelwell, single sided	5		Terrace
<b>Map C-6 State Street, 300 Block</b>				
34	Wheelwell, single sided	5		Terrace
<b>Map C-7 State Street, 200 Block</b>				
19	Wheelwell, single sided	5	May conflict with café (Paul's Club)	Terrace
<b>Map C-8 State Street, 100 Block</b>				
17	Wheelwell, single sided	5	May conflict with café (Buck & Badger)	Terrace
18	Wheelwell, single sided	4	May conflict with café (Red Elephant)	Terrace
33	Wheelwell, single sided	5	May conflict with café (Tiki Shack)	Terrace

**Downtown Madison Bicycle & Moped Parking Study - DRAFT**

<b>ID</b>	<b>Recommended Rack</b>	<b>Capacity</b>	<b>Notes / Potential Constraints</b>	<b>Placement</b>
	<b>Map C-9 N Carroll Street, 10 Block</b>			
1	Wheelwell, double sided	9	May conflict with Saturday vending site F54	Terrace
	<b>Map C-10 E Main Street, 10 Block</b>			
14	Wheelwell, single sided	5	May conflict with Saturday vending permit C31	Terrace
15	Wheelwell, single sided	3	May conflict with food cart permit F41	Terrace
	<b>Map C-11 King Street, 100 Block</b>			
11	Wheelwell, single sided	3		Terrace
	<b>Map C-12 S Pinckney Street, 10 Block</b>			
12	Wheelwell, double sided	9	Replaces existing single-sided rack immediately to the southeast.	Terrace
13	Wheelwell, single sided	5		Back of bus shelter; may require Metro approval
49	Wheelwell, single sided	5	At corner of 100 E Main St. 14.5 feet of sidewalk width	Terrace
	<b>Map C-13 N Pinckney Street, 10 Block</b>			
4	Wheelwell, single sided	5	May not provide adequate pedestrian width to cafe	Back of bus shelter; may require Metro approval
5	Wheelwell, single sided	10	2 racks, each with 5 spaces. Additional materials for typical on-street installation. Winter removal for snow plowing.	On-Street at the NE end of existing parking spaces
6	Wheelwell, double sided	2		Terrace
	<b>Map C-14 N Pinckney Street, 100 Block</b>			
7	Post & Ring	2		Terrace
8	Post & Ring	2		Terrace
	<b>Map C-15 E Mifflin Street, 10 Block</b>			
9	Wheelwell, single sided	5	Vent; May conflict with Saturday vending permit E12	Terrace against planter
10	Wheelwell, double sided	9	May conflict with vending site T16	Terrace
	<b>Map C-16 W Mifflin Street, 10 Block</b>			
31	Wheelwell, single sided	3	May conflict with Saturday vending permit C21	Terrace
32	Wheelwell, single sided	3	May conflict with Saturday vending permits C25, C26	Terrace
48	Wheelwell, double sided	9	May conflict with Arts and Crafts Saturday vending sites F27 and C16	Terrace

**Downtown Bicycle & Moped Parking Study  
Recommended Additional Rack Locations**

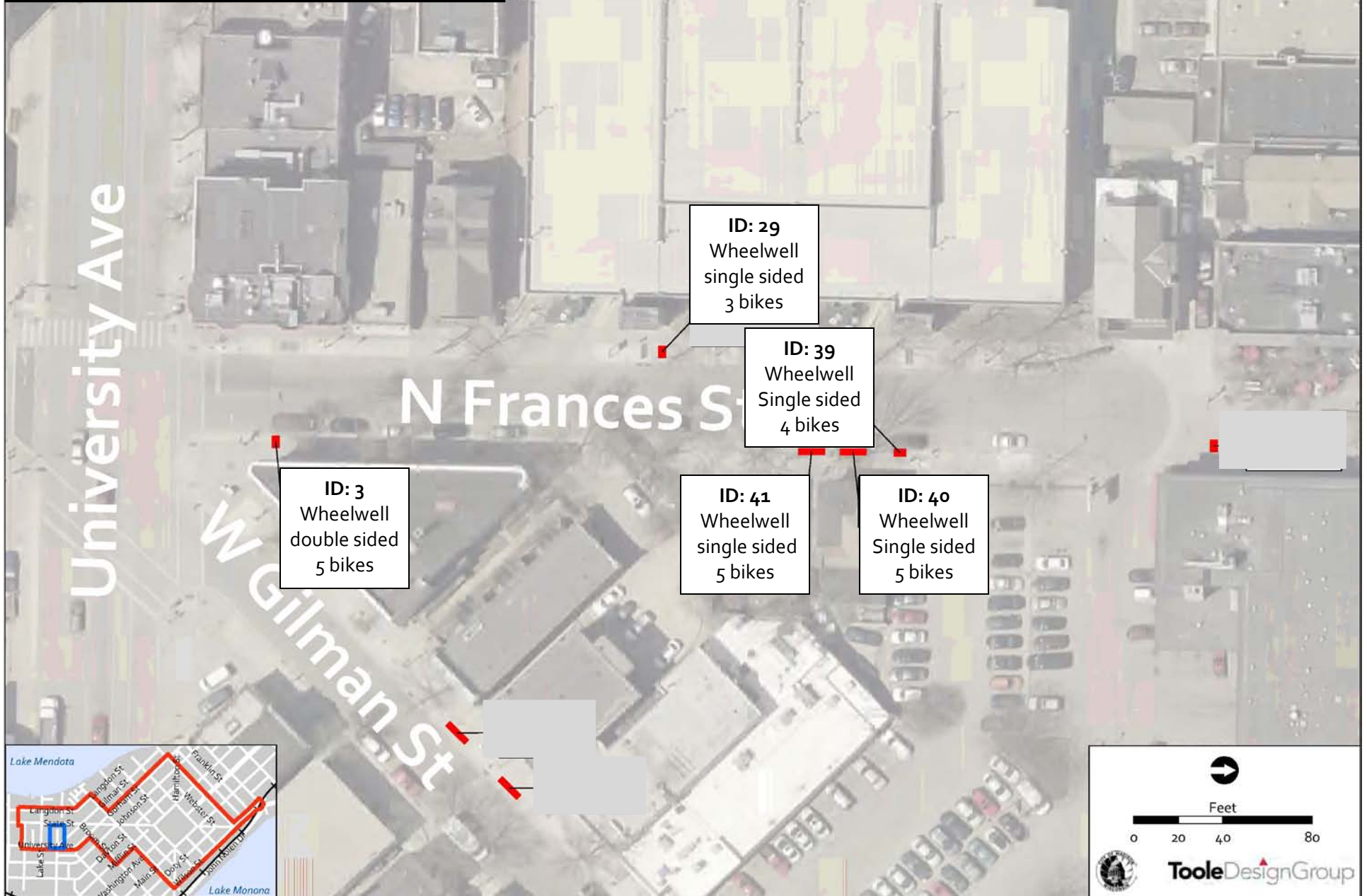
**Map C-1 State Street, 600 Block**



**Downtown Bicycle & Moped Parking Study  
Recommended Additional Rack Locations**

**Map C-2 N Frances Street, 400 Block**

# Hawthorne Ct





# Downtown Bicycle & Moped Parking Study Recommended Additional Rack Locations

## Map C-3 State Street, 500 Block



**Downtown Bicycle & Moped Parking Study  
Recommended Additional Rack Locations**

**Map C-4 W Gilman Street, 400 Block**





**Downtown Bicycle & Moped Parking Study  
Recommended Additional Rack Locations**

**Map C-5 State Street, 400 Block**



**ID: 46**  
Wheelwell  
Single sided  
5 bikes



North arrow pointing up.

Feet

0 20 40 80

**TooleDesignGroup**



**Downtown Bicycle & Moped Parking Study  
Recommended Additional Rack Locations**

**Map C-6 State Street, 300 Block**



**ID: 34**  
Wheelwell  
Single sided  
5 bikes



North arrow pointing up.

Feet

0 20 40 80

**Toole Design Group**

**Downtown Bicycle & Moped Parking Study  
Recommended Additional Rack Locations**

**Map C-7 State Street, 200 Block**



**ID: 19**  
Wheelwell  
Single sided  
5 bikes

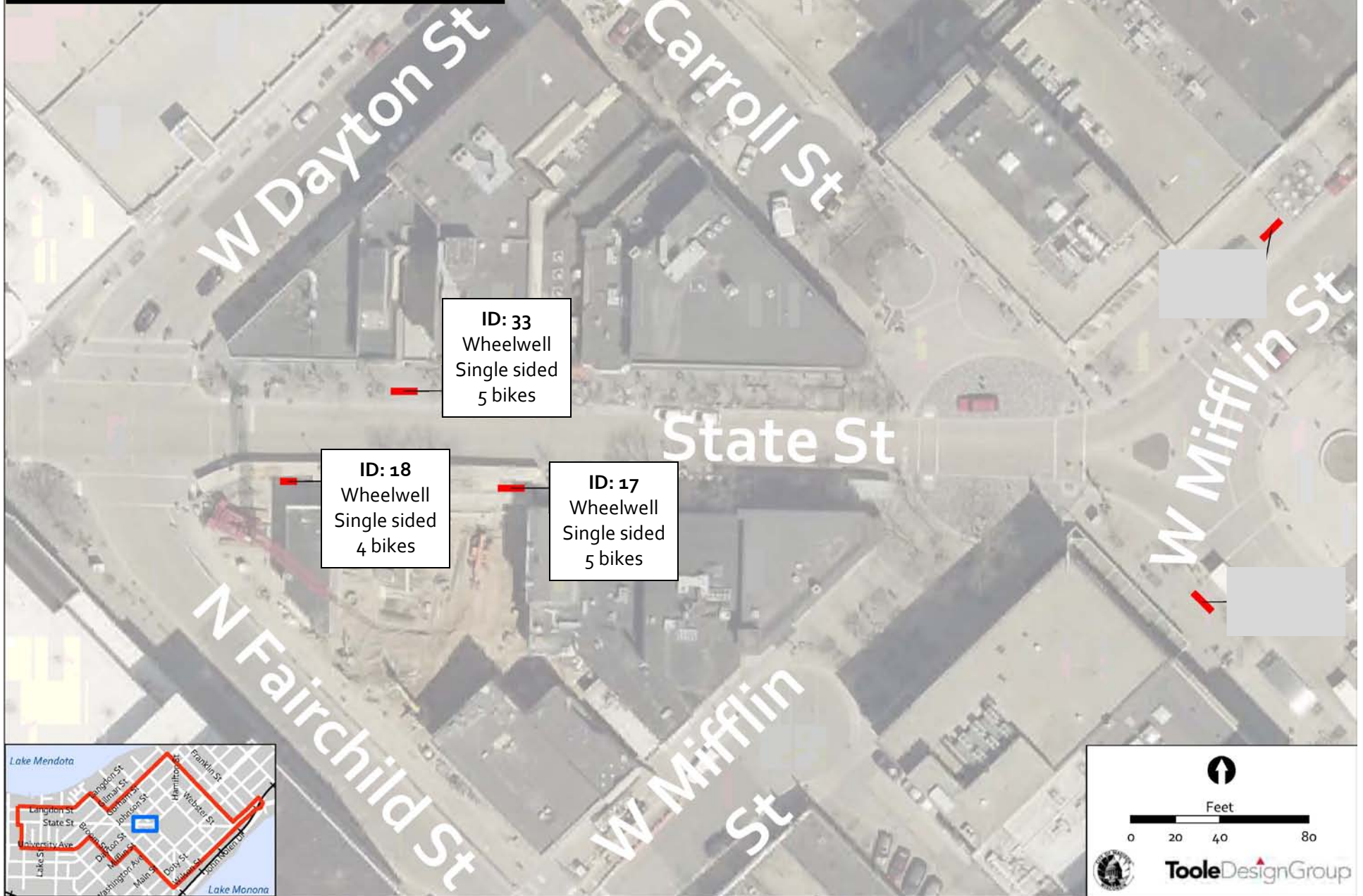


0 20 40 80  
Feet  
TooleDesignGroup



**Downtown Bicycle & Moped Parking Study  
Recommended Additional Rack Locations**

**Map C-8 State Street, 100 Block**





**Downtown Bicycle & Moped Parking Study  
Recommended Additional Rack Locations**

**Map C-9 N Carroll Street, 10 Block**




**ID: 1**  
Wheelwell  
double sided  
9 bikes



North arrow pointing up.

Feet

0 20 40 80



**TooleDesignGroup**

**Downtown Bicycle & Moped Parking Study  
Recommended Additional Rack Locations**

**Map C-10 E Main Street, 10 Block**





**Downtown Bicycle & Moped Parking Study  
Recommended Additional Rack Locations**

**Map C-11 King Street, 100 Block**



A north arrow points upwards. Below it is a scale bar labeled "Feet" with markings at 0, 20, 40, and 80. At the bottom right is the TooleDesignGroup logo, which includes a circular emblem and the company name.



**Downtown Bicycle & Moped Parking Study  
Recommended Additional Rack Locations**

**Map C-12 S Pinckney Street, 10 Block**



**Downtown Bicycle & Moped Parking Study  
Recommended Additional Rack Locations**

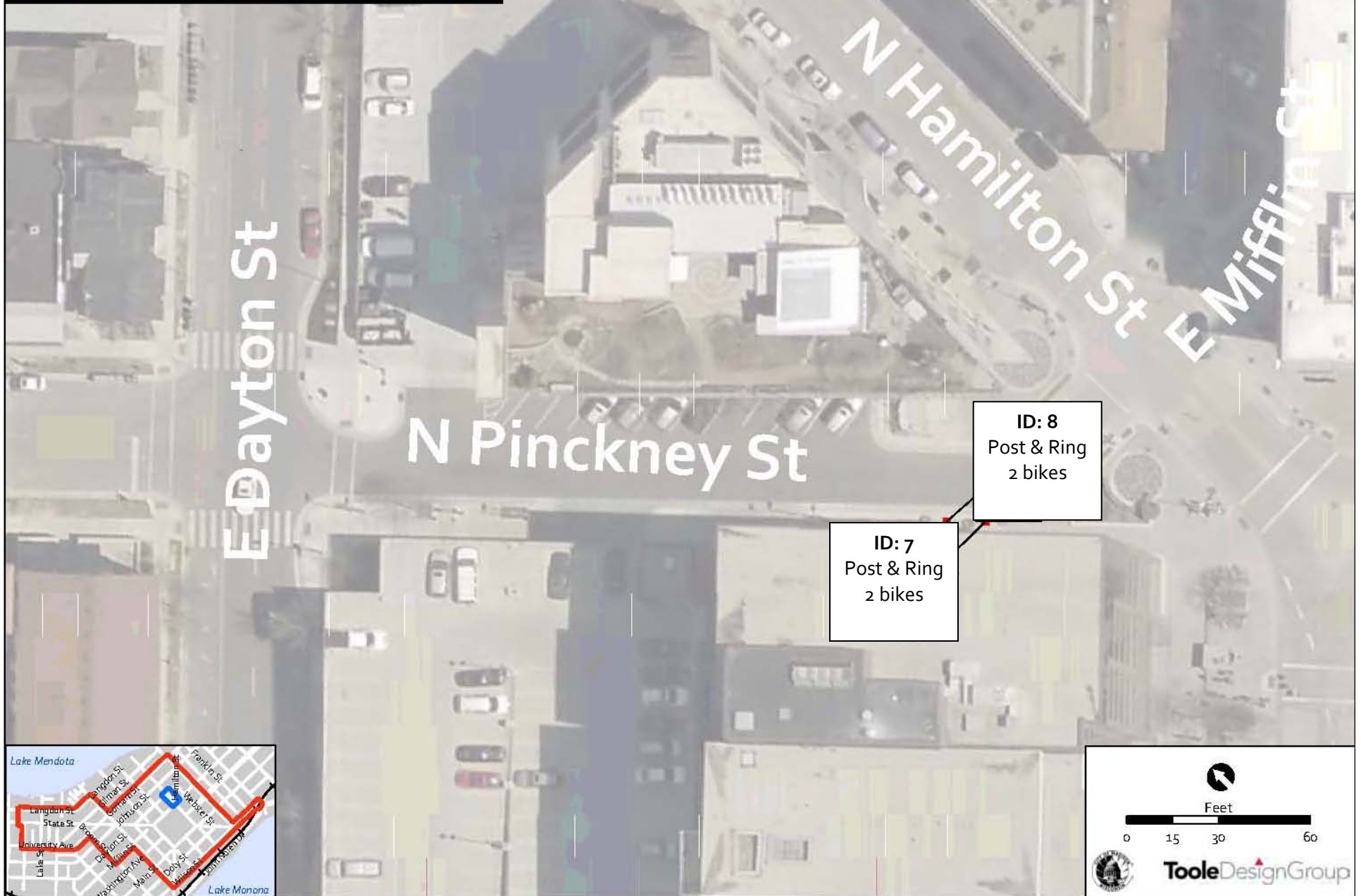
**Map C-13 N Pinckney Street, 10 Block**





**Downtown Bicycle & Moped Parking Study  
Recommended Additional Rack Locations**

**Map C-14 N Pinckney Street, 100 Block**



Dayton St

N Pinckney St

N Hamilton St

E Mifflin St

**ID: 8**  
Post & Ring  
2 bikes

**ID: 7**  
Post & Ring  
2 bikes



North arrow pointing up.

Feet

0 15 30 60



**Downtown Bicycle & Moped Parking Study  
Recommended Additional Rack Locations**

**Map C-15 E Mifflin Street, 10 Block**



**Downtown Bicycle & Moped Parking Study  
Recommended Additional Rack Locations**

**Map C-16 W Mifflin Street, 10 Block**

