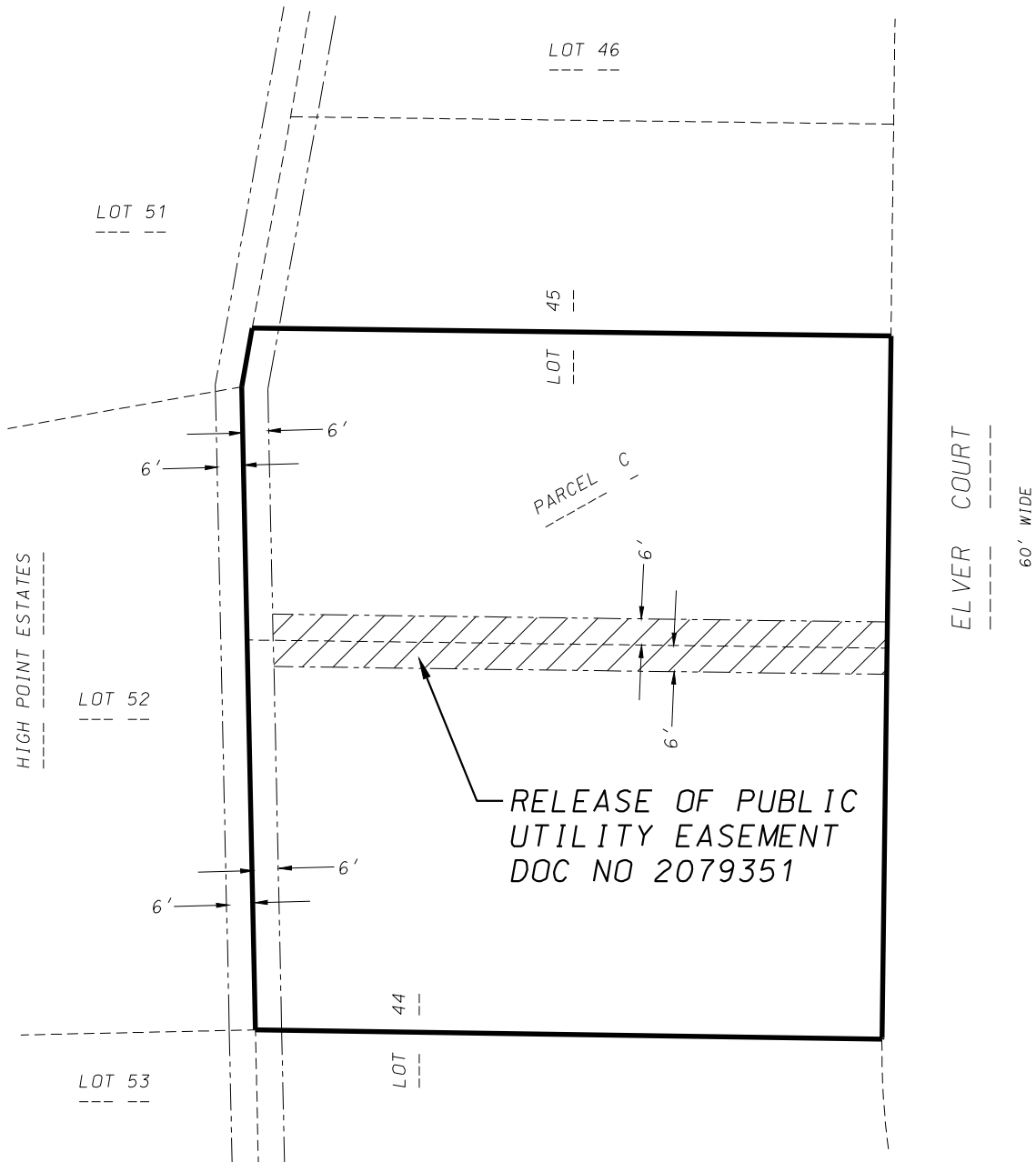


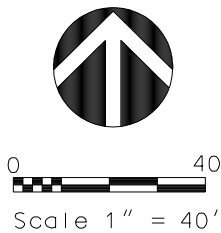
EXHIBIT A



RELEASE OF EASEMENT:

THE NORTH 6 FEET OF LOT 44 EXCEPT THE WEST 6 FEET THEREOF AND THE SOUTH 6 FEET OF LOT 45 EXCEPT THE WEST 6 FEET THEREOF, HIGH POINT ESTATES RECORDED IN VOL 56-43B OF PLATS ON PAGES 121-123 AS DOCUMENT NO. 2079351, DANE COUNTY REGISTRY.

D'ONOFRIO KOTTKE AND ASSOCIATES, INC.
 7530 Westward Way, Madison, WI 53717
 Phone: 608.833.7530 • Fax: 608.833.1089
 YOUR NATURAL RESOURCE FOR LAND DEVELOPMENT



DATE: 08-11-16
 F.N.: 16-02-142
 DRAWN BY: KJP