

State St Confluence Art Feature, Madison, WI

Dimitar Lukanov/Proposal/November 2016

DreamSky (Cloud of Dreams)



Sculpture height: 9-10ft, width: 17-18ft, depth: 7-8ft.

Height of tripod support: 14ft; tripod pillars: 6" diameter; 1/2" thickness

Total height of sculpture and tripod support (Grade 316 stainless steel): 24-25ft

Sculpture weight: up to 1300lb

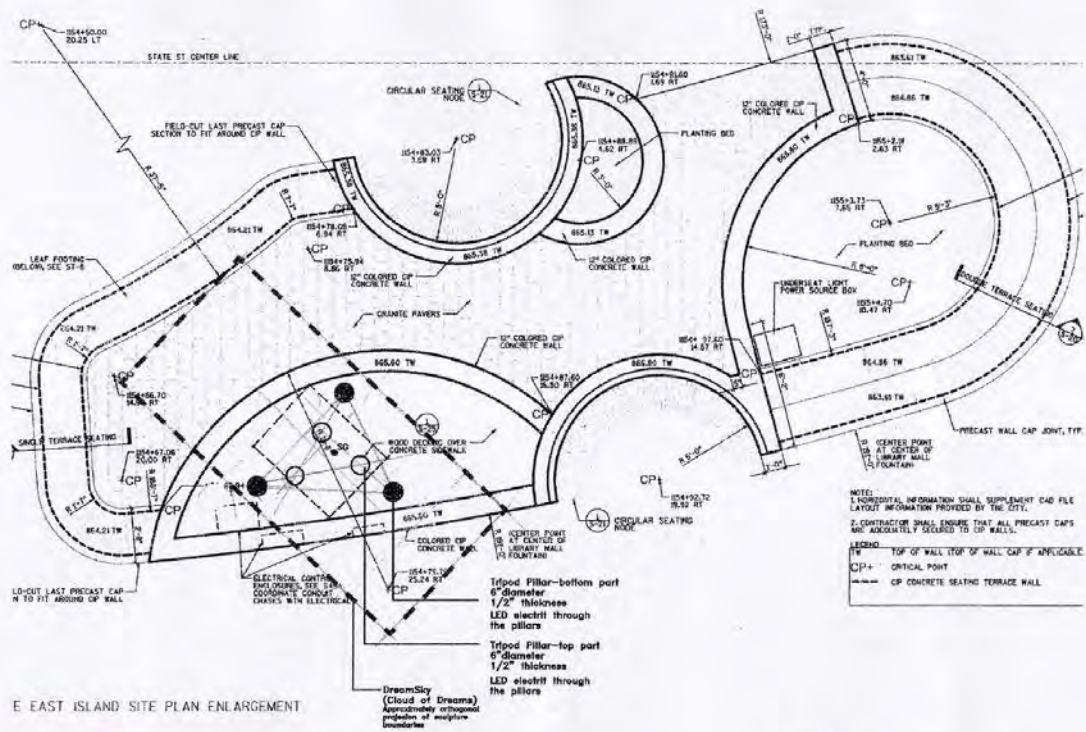
Medium: high-grade stainless steel (Grade 316), multi-color (Imron DuPont) paint;

Completion: five months.

Scale of maquette: 1/4" = 1ft

(Scale of ceramic sculpture as a source of inspiration: 1" = 1ft)

Inspiration

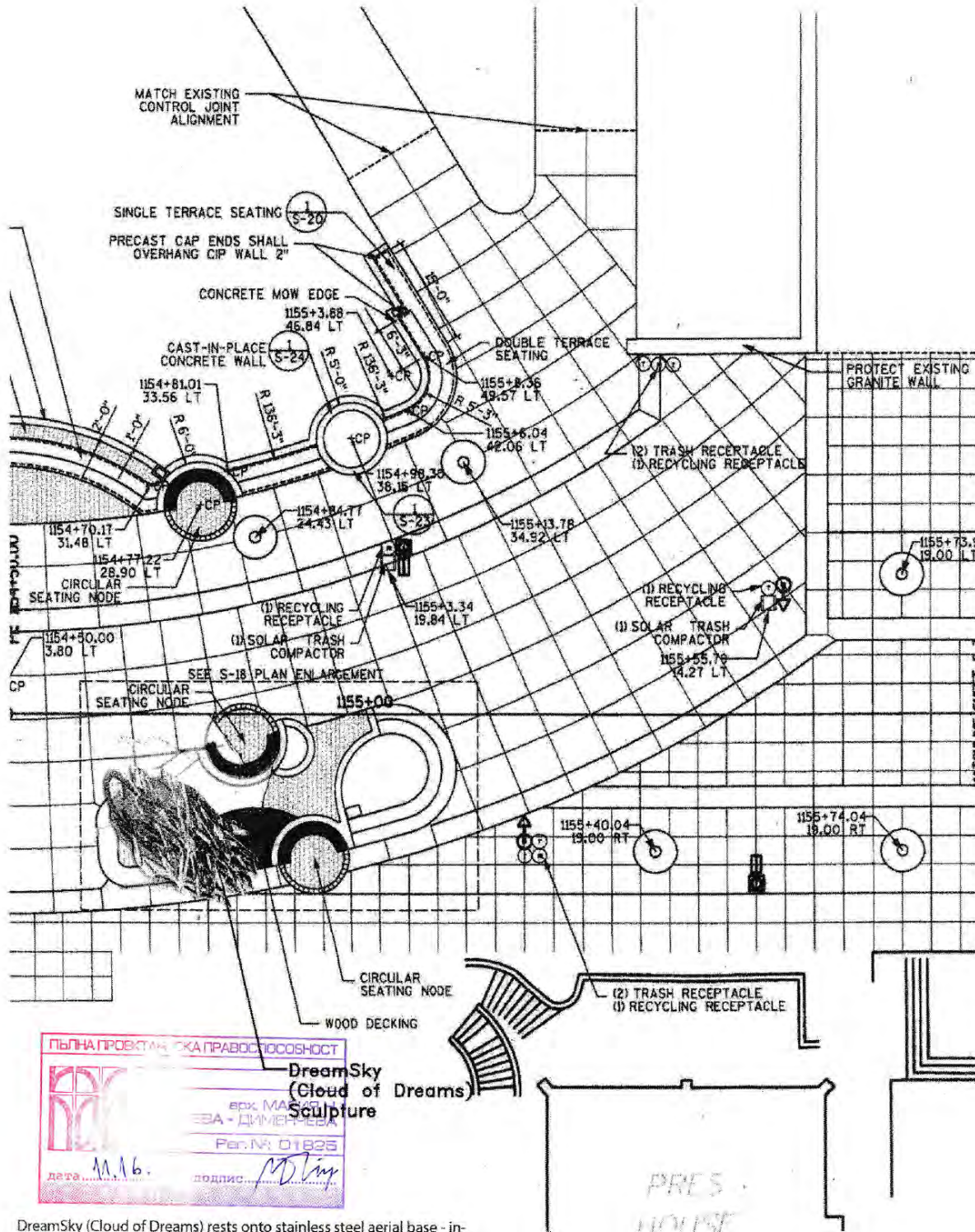


E EAST ISLAND SITE PLAN ENLARGEMENT



STREETSCAPE WITH DREAMSKY (CLOUD OF DREAMS)

SITUATIONAL ORTHOGONAL PROJECTION
DIMITAR LUKANOV PROPOSAL
NOVEMBER 2015



DreamSky (Cloud of Dreams) rests onto stainless steel aerial base - incorporated into sculpture's texture - of approximately 8ft x 4ft; The aerial nature of sculpture allows for a gradual distribution of weight in all directions outward. Tripod pillars constitute six support points - three at ground level and three at steel base/bottom of sculpture - onto which up to 1300 lb weight is evenly distributed with fully sufficient structural strength. Center of Gravity (CG) falls exactly in the middle of current punctuated rectangular. CG falls into the middle of the two triangular projections of the support tripod pillars points (upper and lower). There is no incline off CG of sculpture, aerial base or confluence of tripod pillar support system.

STREETSCAPE WITH DREAMSKY (CLOUD OF DREAMS)

SITUATIONAL ORTHOGONAL PROJECTION
DIMITAR LUKANOV PROPOSAL
NOVEMBER 2016











