

NW CORNER SECTION 16 T8N, R10E

N 89°04'44" E

HOECKER ROAD

883.38'

N 1/4 CORNER SECTION 16 T8N, R10E



DEPARTMENT OF PUBLIC WORKS
CITY ENGINEERING DIVISION
MADISON, WISCONSIN

EXHIBIT "A" PARTS OF MERCHANT ST & GRAASKAMP WAY TO BE VACATED

PORTION OF
MERCHANT STREET
TO BE DISCONTINUED
128,999 S.F. - 2.9614 AC

AVENUE
REAGAN

THE CENTER FOR
INDUSTRY &
COMMERCE

RONALD
REAGAN
AVENUE

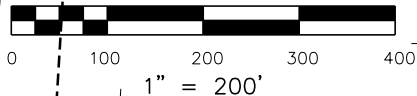
THE CENTER FOR
INDUSTRY &
COMMERCE

FUTURE

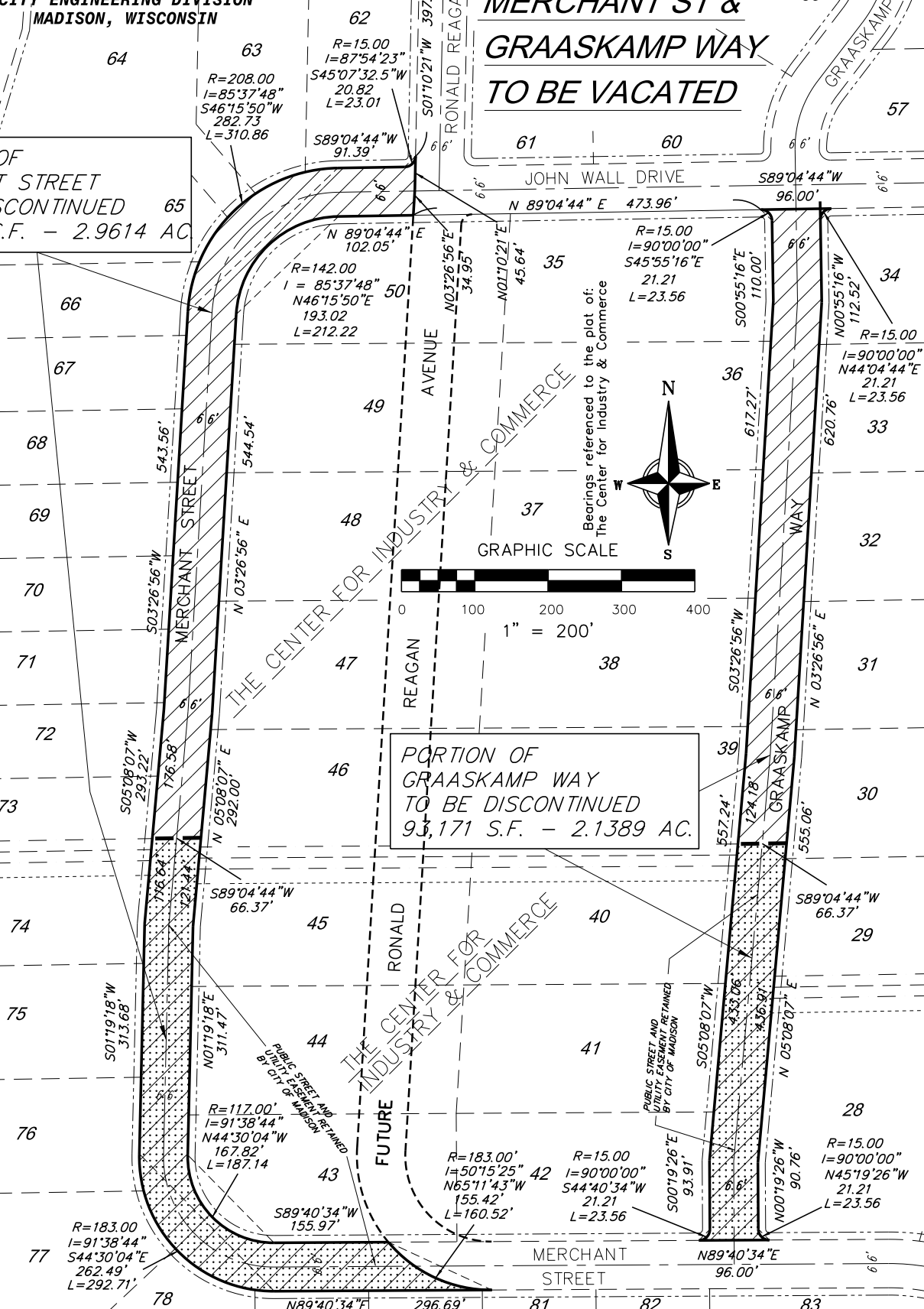
U.S.H. "51"

FILENAME: F:\EncommonLand Records\VACATE STREETS\B000205 CIC Street Vacations 2016\Drawings\CIC Discontinuances St Johns Version 3.dgn
DATE: 11/29/2016
ENGR. PROJ. NO. B000205

Bearings referenced to the plat of:
The Center for Industry & Commerce



PORTION OF
GRAASKAMP WAY
TO BE DISCONTINUED
93,171 S.F. - 2.1389 AC.



R=183.00'
I=91°38'44"
S44°30'04"W
262.49'
L=292.71'

R=117.00'
I=91°38'44"
N44°30'04"W
167.82'
L=187.14

R=183.00'
I=50°15'25"
N65°11'43"W
155.42'
L=160.52'

R=15.00'
I=90°00'00"
S44°40'34"W
21.21'
L=23.56

R=15.00'
I=90°00'00"
N45°19'26"W
21.21'
L=23.56

R=208.00'
I=85°37'48"
S46°15'50"W
282.73'
L=310.86

R=15.00'
I=87°54'23"
S45°07'32.5"W
20.82'
L=23.01

R=15.00'
I=90°00'00"
S45°55'16"E
21.21'
L=23.56

R=15.00'
I=90°00'00"
N44°04'44"E
21.21'
L=23.56