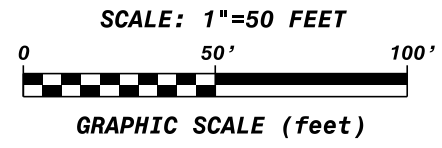


W 1/4 CORNER  
 SEC 35, T7N-R9E  
 FD CITY BRASS CAP MONUMENT  
 N: 469,679.37 (469,679.34)  
 E: 815,878.02 (815,877.75)

WCCS DANE ZONE  
 S LINE OF THE NW 1/4, SEC 35, T7N-R9E  
 BEARS: S 89°06'01" E, 2642.04'



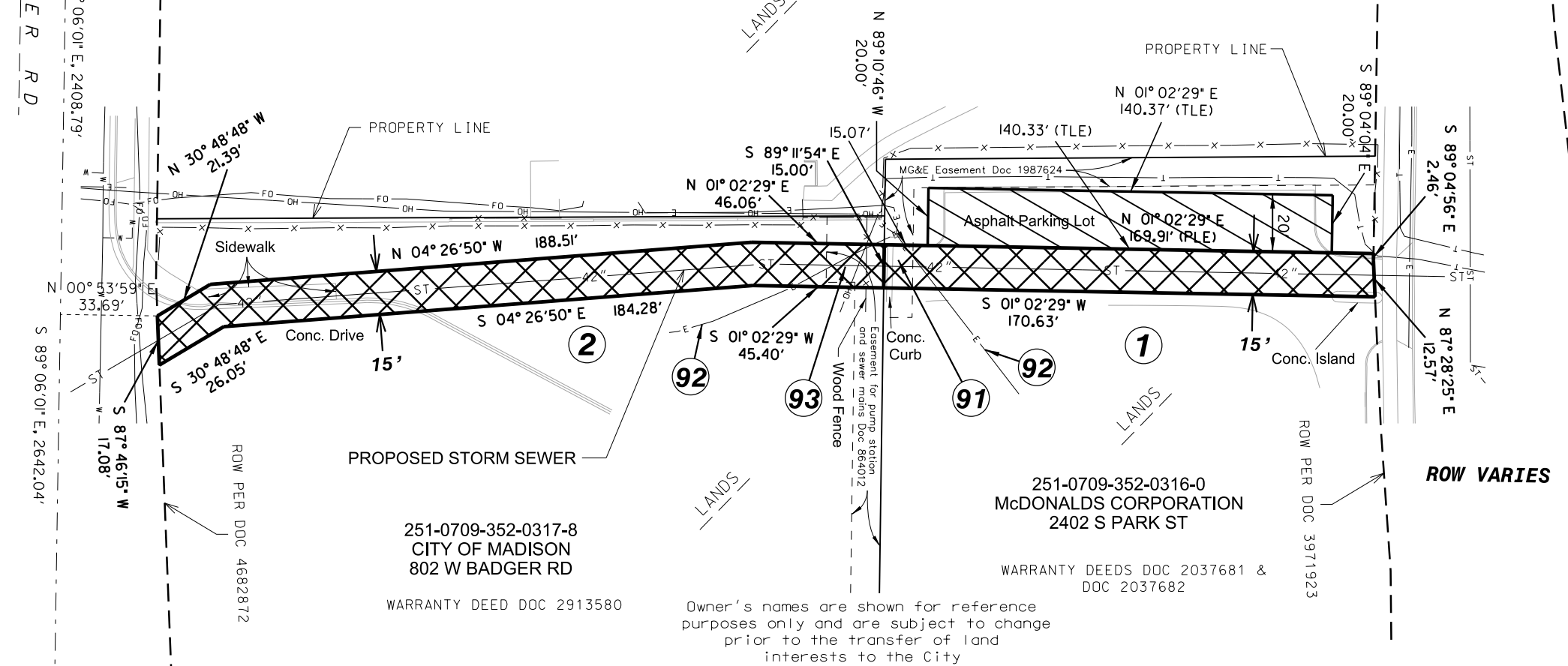
RELOCATION ORDER APPROVED BY THE COMMON COUNCIL:	
CITY CLERK	DATE
RELOCATION ORDER APPROVED BY THE BOARD OF PUBLIC WORKS:	
EXECUTIVE SECRETARY	DATE
RELOCATION ORDER APPROVED BY THE PLAN COMMISSION:	
EXECUTIVE SECRETARY	DATE

ROW VARIES

W  
B  
A  
D  
G  
E  
R  
R  
D

H  
U  
G  
H  
E  
S  
P  
L

PLE FOR PUBLIC STORM SEWER PURPOSES  
 TLE FOR CONSTRUCTION PURPOSES



SCHEDULE OF INTERESTS REQUIRED					
PARCEL #	OWNER NAME	PLE AREA REQUIRED	TLE AREA REQUIRED	CONSENT TO OCCUPY	TEMPORARY RELEASE OF RIGHTS
1	McDONALDS CORPORATION	2,553 SQ FT 0.059 ACRES	2,807 SQ FT 0.064 ACRES		
2	CITY OF MADISON TRANSIT	3,838 SQ FT 0.088 ACRES			
91	MADISON GAS & ELECT CO	EXISTING DOC 1987624		150 SQ FT 0.003 ACRES	
92	MADISON GAS & ELECT CO	EX. ELECTRIC SERVICE LINE - NO ESMT OF RECORD			EX. ELECTRIC SERVICE LINE
93	TOWN OF MADISON	EXISTING DOC 864012		283 SQ FT 0.006 ACRES	

**CITY OF MADISON  
 RELOCATION ORDER**

"PLAT OF LAND INTERESTS REQUIRED FOR THE CONSTRUCTION AND MAINTENANCE OF IMPROVEMENTS FOR A PUBLIC STORM SEWER" LOCATED IN PART OF THE SE 1/4 OF THE NW 1/4, OF SEC 35, T 7 N, R 9 E, CITY OF MADISON, DANE COUNTY, WISCONSIN.

CITY ENGINEERING DIVISION  
 PROJECT NO. 11491  
 REAL ESTATE PROJECT NO. 11174

OCTOBER 25, 2016 djs  
 Rev. OCTOBER 31, 2016 djs

PLOT SCALE: \_\_\_\_\_  
 PLOT NAME: \_\_\_\_\_  
 REV. DATE: \_\_\_\_\_  
 ORIGINATOR: \_\_\_\_\_