

**DARBO-WORTHINGTON-STARKWEATHER  
NEIGHBORHOOD PLAN  
HEALTH IMPACT ASSESSMENT (HIA)**

**Urvashi Martin, AICP  
City Planning**

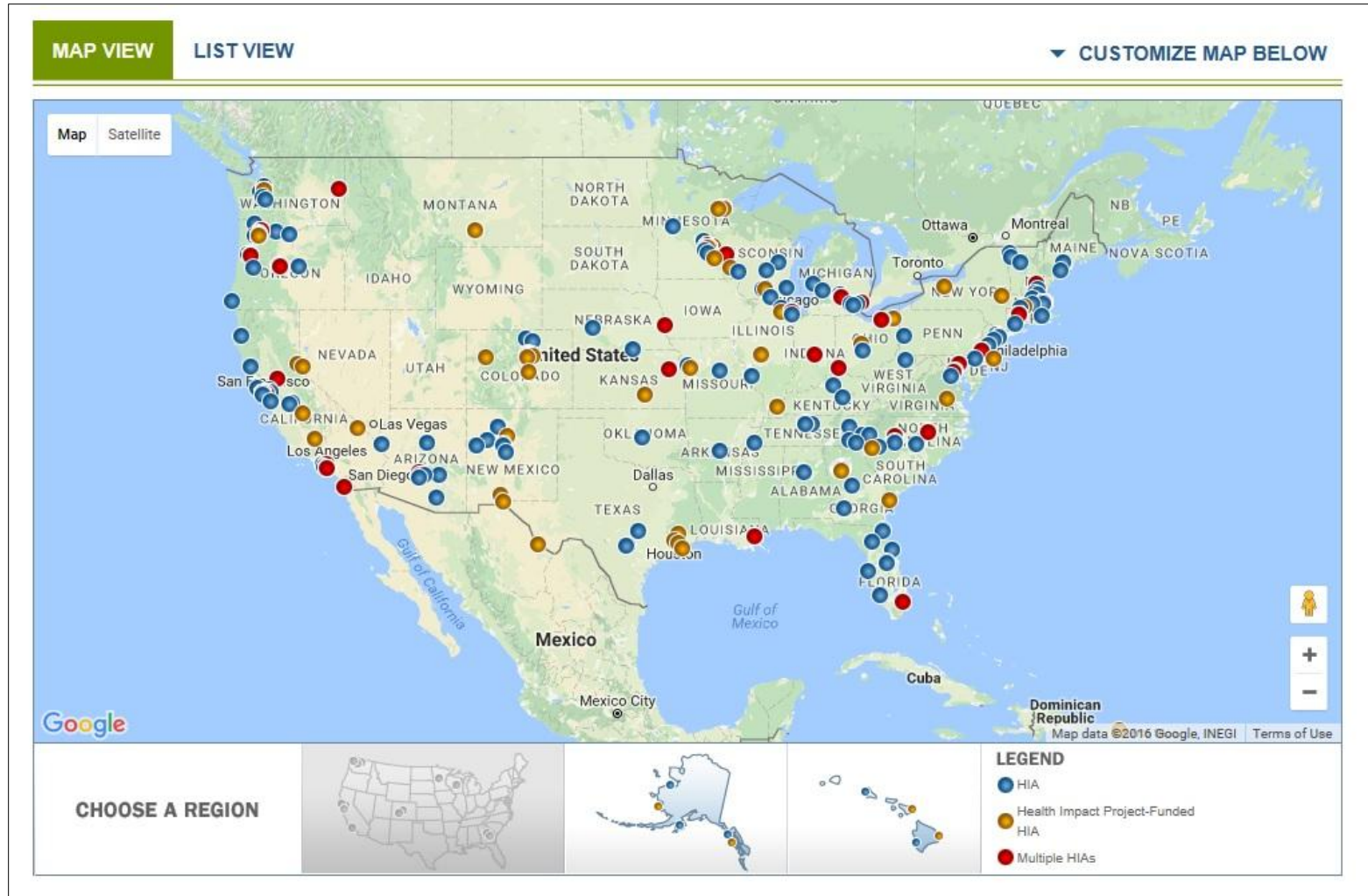
# WHAT IS HEALTH IMPACT ASSESSMENT (HIA)?

*A combination of procedures, methods and tools by which a policy, program or project may be judged as to its potential effects on the health of a population, and the distribution of those effects within the population.*

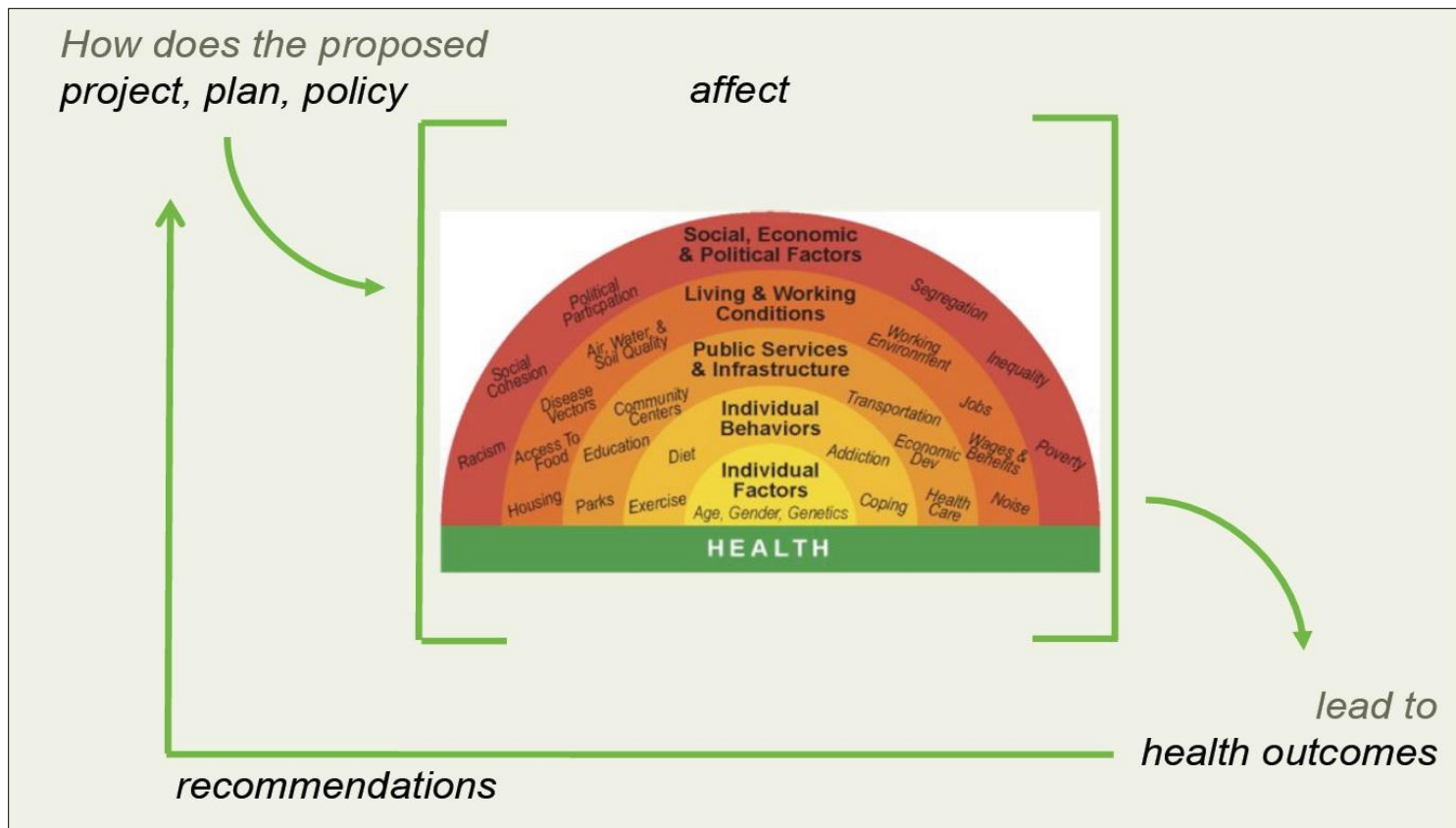
(WHO, 2012)

- Measure health effects of a proposed project, plan or program
- Make health impacts more explicit
- Provide recommendations
- Highlight health disparities
- Raise awareness among decision-makers and the public

# HIAs IN US



# HIA ADDRESSES DETERMINANTS OF HEALTH



Source: Human Impact Partners

# HIA: WHAT IS THE PROCESS?

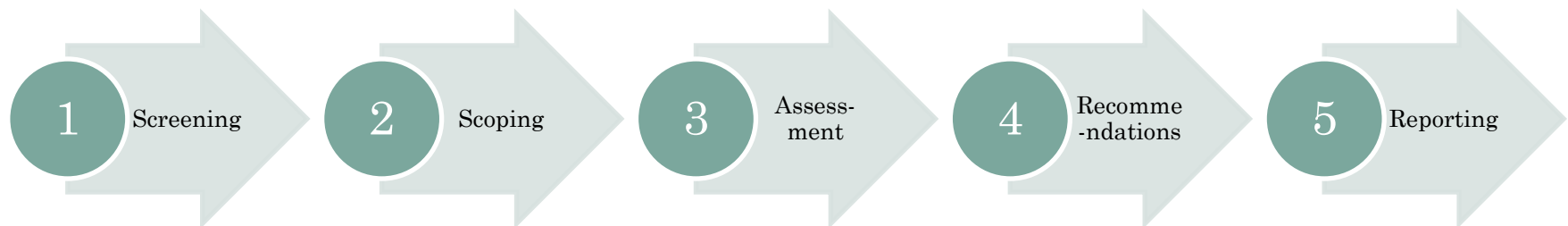


# HEALTH IMPACT ASSESSMENT (HIA) OF DARBO-WORTHINGTON-STARKWEATHER NEIGHBORHOOD PLAN

## Project Description

In an effort to make sure that the Darbo-Worthington-Starkweather Neighborhood Plan would bring about the best health outcomes for current and future residents a Health Impact Assessment (HIA) is being conducted.

## HIA Process & Timeline



Project Funded by: Dane County's BUILD Program



# DARBO-WORTHINGTON-STARKWEATHER NEIGHBORHOOD BACKGROUND

## Population

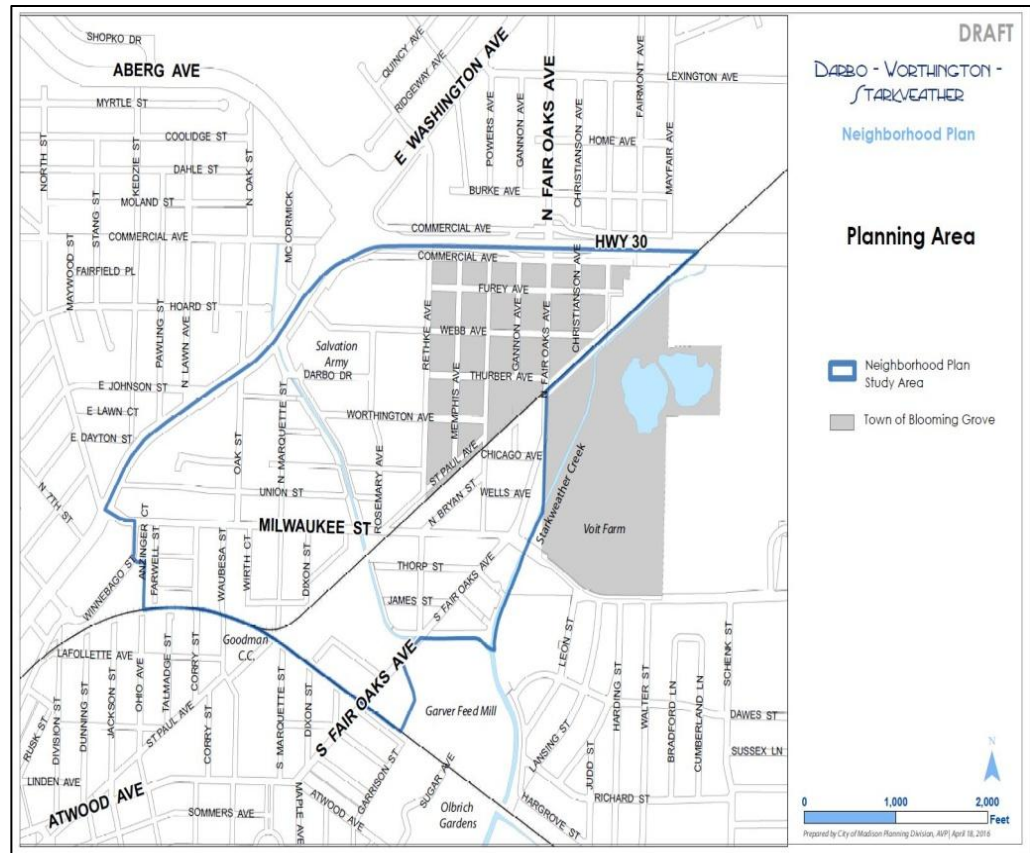
- 3600 persons
- 21 % Town Residents

## CDBG Target Area

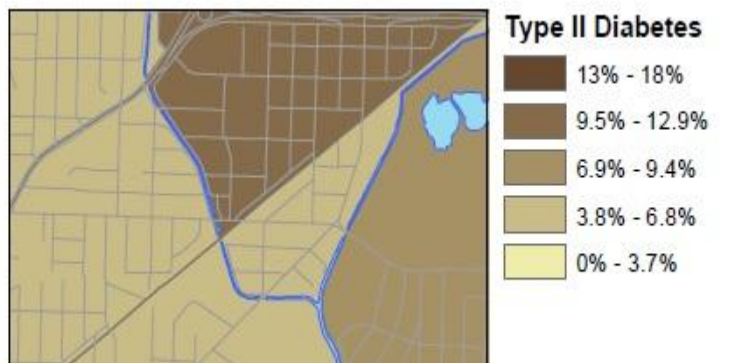
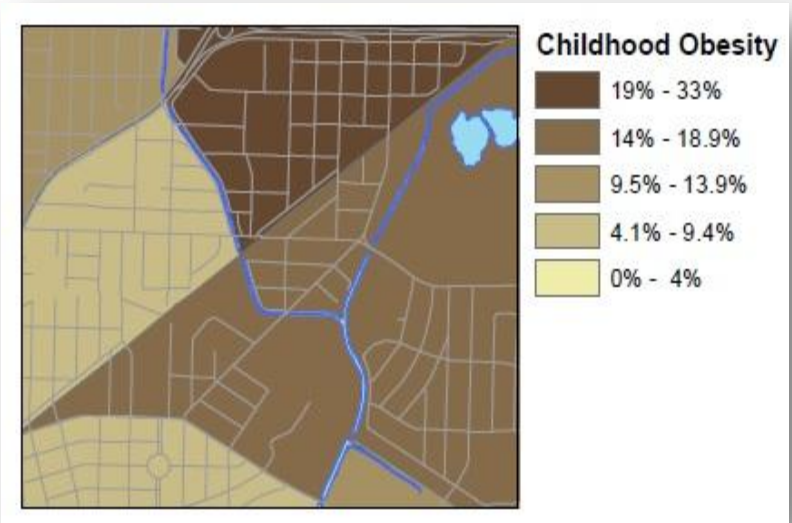
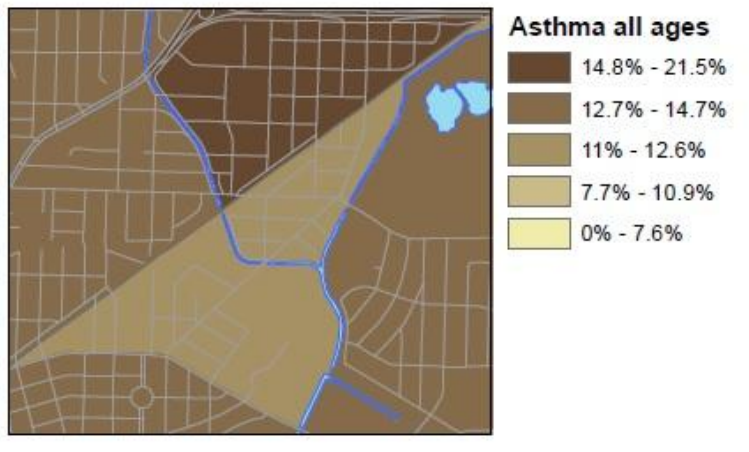
- Higher concentration of low and moderate income population in planning area

## Food Swamp

- Area determined by Public Health that is swamped with convenience stores and fast food outlets



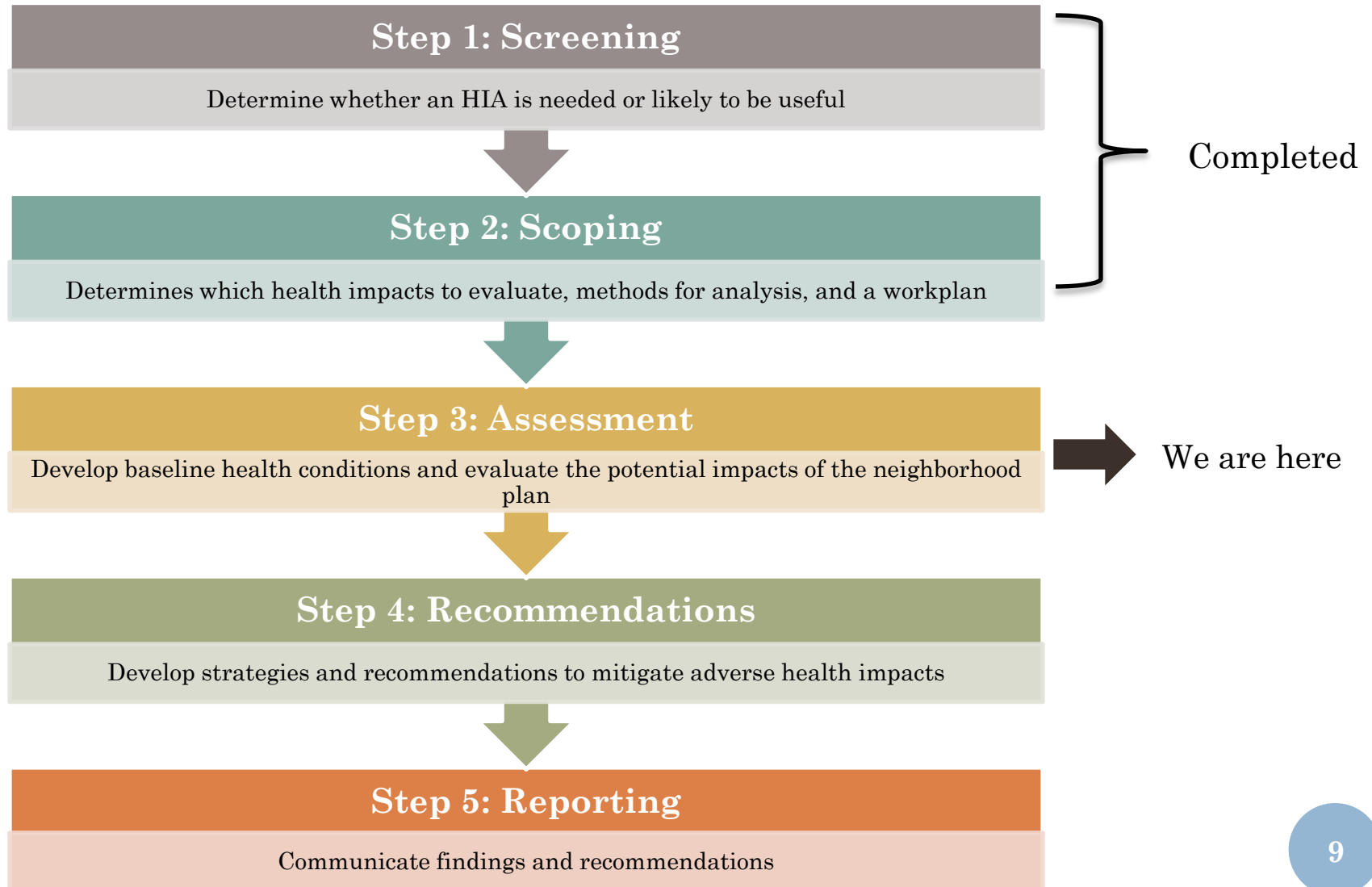
# CRUDE RATES OF ASTHMA, DIABETES AND CHILDHOOD OBESITY IN THE PLANNING AREA



Data Source:  
UW Dept. of Family Medicine  
PHINEX: Public Health Information  
Exchange  
Data collected from 2007-2012



# PROJECT STATUS: WHERE WE ARE?



# CASE STUDIES

- Duluth, MN – 6th Avenue East Duluth HIA (2011)
- Portland, OR – SE 122nd Avenue Planning Study HIA (2010)
- Hartford, CT – Northeast Neighborhood Sustainability Plan HIA (2014)
- Denver, CO – How Neighborhood Planning Affects Health in Globeville and Elyria Swansea (2014)
- Detroit, MI – Healthy Neighborhoods for a Healthy Detroit (2015)

# DATA SOURCES & METHODS

- Primary Research – stakeholder interviews, Focus Group Meetings, listening sessions, Open House and other community engagement
- Health Status – food insecurity, obesity rate, asthma, type 2 diabetes, birth rates
- Demographics & socioeconomics – age, race, ethnicity
- Housing – housing tenure, housing cost burden, age of housing stock
- Environmental – tree canopy, air quality index, water quality, noise, soil contamination
- Crime & Safety – crimes rates, lighting, code violations, crash rates
- Access and equity- proximity of parks, grocery stores, jobs, medical facilities

# HEALTH DETERMINANTS

1. Safety
2. Mobility & Accessibility
3. Environmental & Built Conditions
4. Social Connectedness & Empowerment

## NEXT STEPS

- Perform qualitative and/or quantitative analysis to evaluate the potential impacts of the neighborhood plan on the health determinants
- Develop strategies and recommendations to mitigate negative impacts
- Present results to the community
- Present results to the BUILD Advisory Committee
- Create HIA report that documents the entire process and results
- Incorporate the HIA report in the Neighborhood Plan and go through committees and council for review and approval

QUESTIONS?