

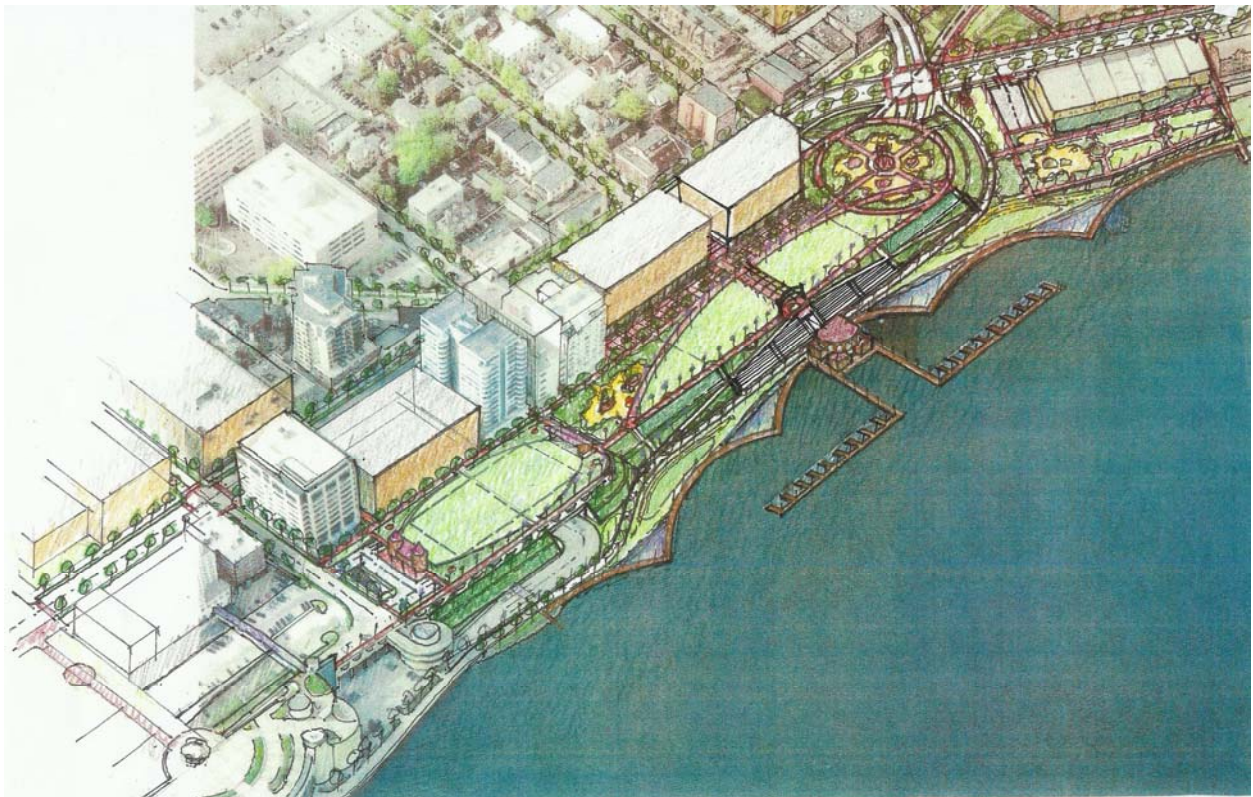
May 2016

# 2016 Nolen Waterfront

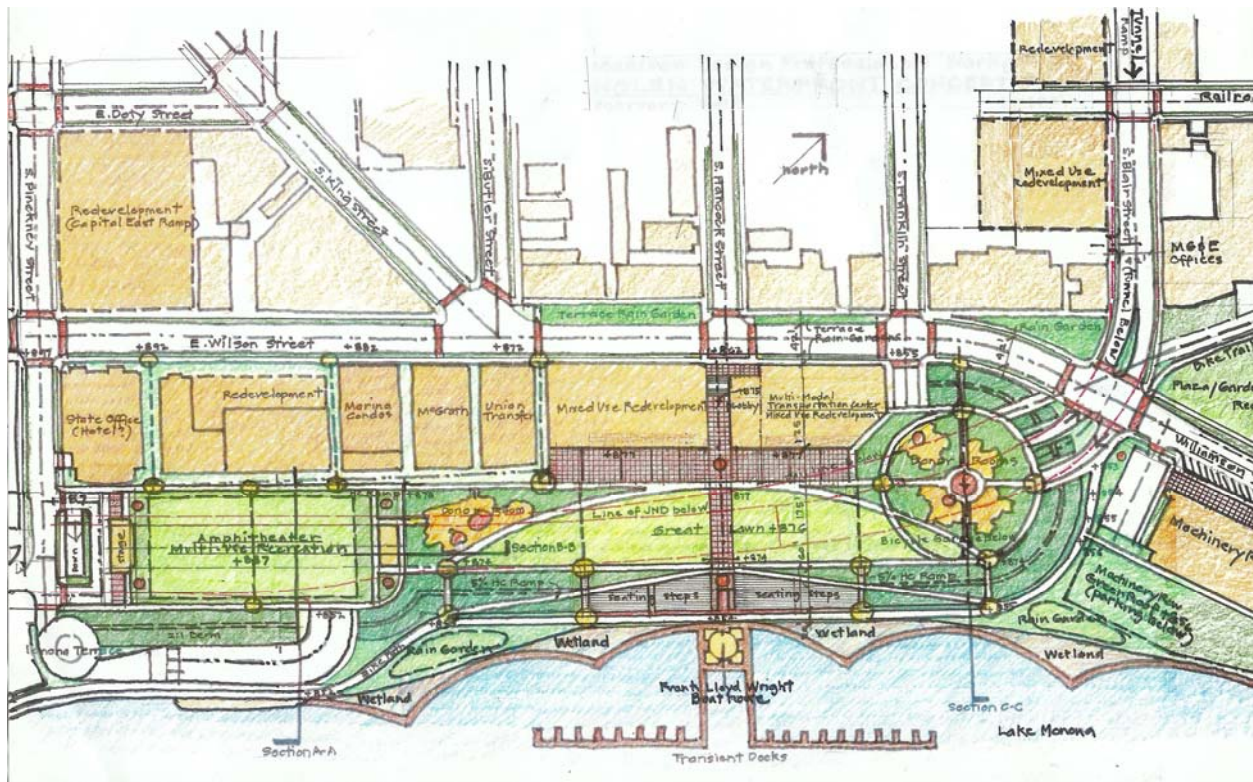
## Madison Design Professionals Workgroup

The Nolen Waterfront is a transformative vision for connecting Downtown Madison to Lake Monona that implements John Nolen's 1909 vision for a Great Esplanade along Lake Monona. Key design features of the Nolen Waterfront vision include:

- Raised deck over John Nolen Drive
- 9 AC lakefront park
- 500 car parking ramp
- Connections to Monona Terrace and State Capitol
- Multiple pedestrian and bicycle connections
- Frank Lloyd Wright Boathouse and transient docking
- Multi-modal transportation center
- USH 151 underpass improves Blair Street intersection
- Sustainable design
- Catalytic redevelopment

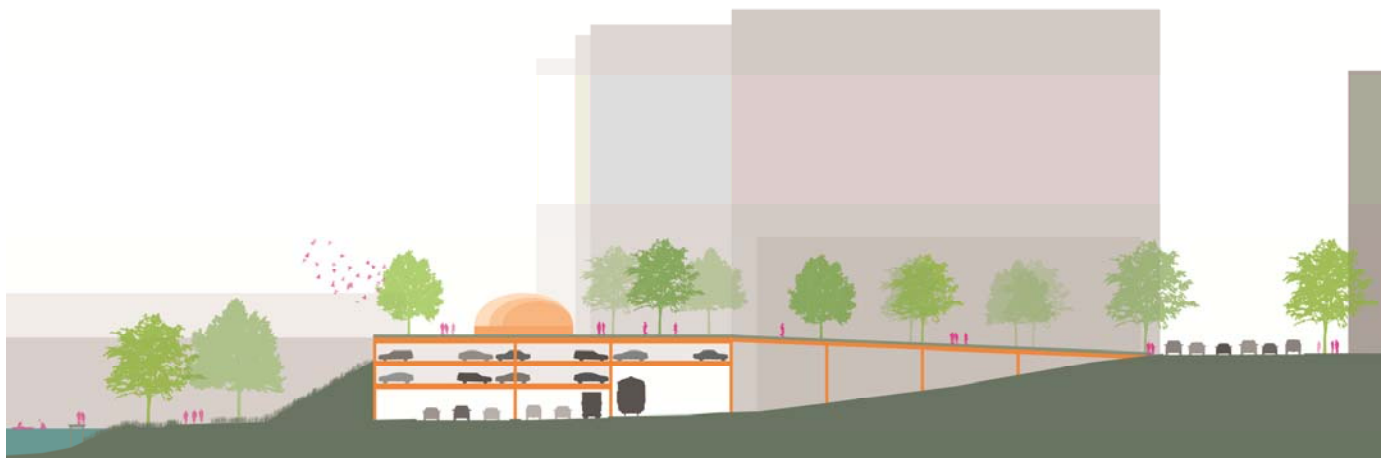


Bird's Eye Perspective Looking North



Upper Park EL 887	Lower Park EL 877
Amphitheater/Recreation Area	Great Lawn/Seating Steps/Gardens

# Nolen Waterfront Concept Plan



Lake    Bike Path    Parking Deck /Park    Walkway    Wilson Street

## Section Through 500 Car Parking Deck (Looking West to Monona Terrace)

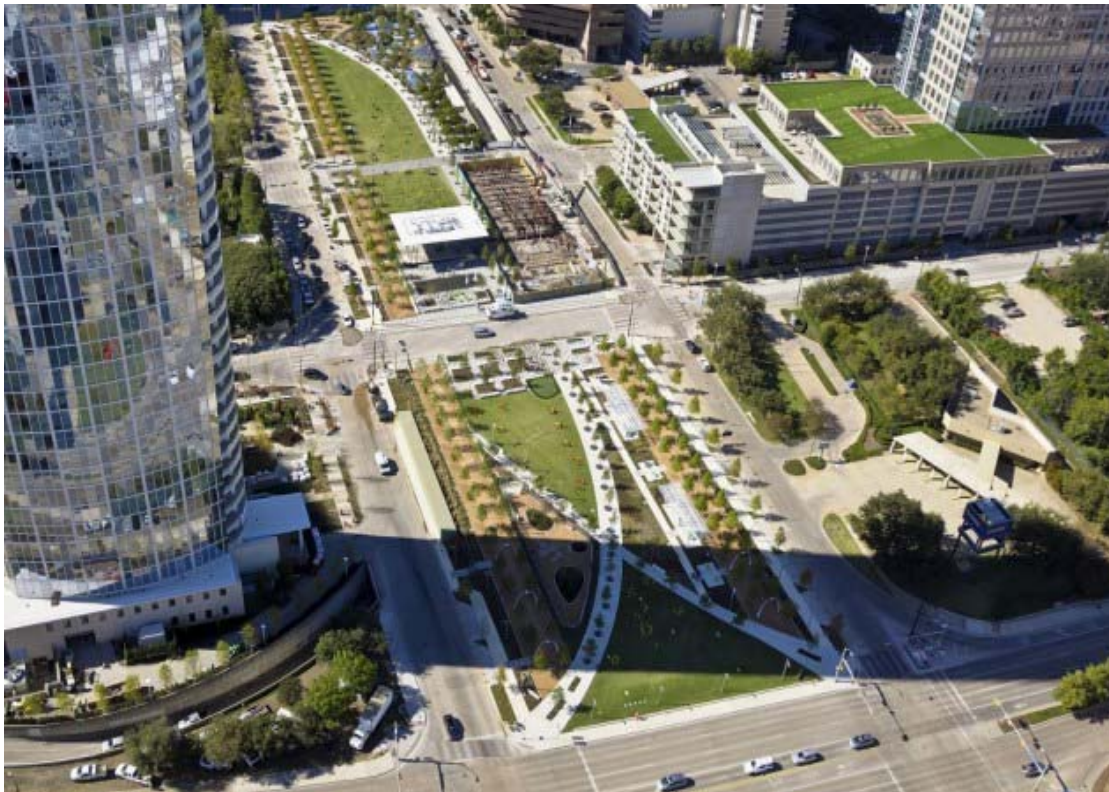
For more information: Tim Anderson tander2126@gmail.com



# Nolen Waterfront Case Study Klyde Warren Park, Dallas, TX



**Before Construction: Woodhall Rogers Freeway**



**After Construction: Kyle Warren Park over Woodhall Rogers Freeway**

## Project Description



Kyle Warren Park is a decking project over the Woodall Rodgers Freeway that created a new 5.2 AC urban green space in downtown Dallas. Kyle Warren Park connected the Dallas Arts District, Uptown, Farmers Market, the CBD, Victory Park, and the West End to create a cohesive and integrated central park for the City of Dallas.

**Date Opened:** October 2012

**Size of Park:** 5.2 AC, 1045' long, 210' wide

**Cost:** \$106.7 million

### Funding:

City of Dallas: \$20 million

State DOT funding: \$20 million

Federal Stimulus Funds: \$16.7 million

Private Donations: \$50 million

### Fundraising:

The Woodall Rodgers Park Foundation raised \$106 million for the Klyde Warren Park. The fundraising campaign total included design, landscape, programming, operations and an operating reserve.

### Economic Impact:

182 new jobs

\$91 million increased tax revenues

1.5 million annual visitors

\$1 billion of new commercial and residential development within one half mile