



NEW LOGO Coming Soon!

Madison Community Schools
Update August 2016

Goals for Community Schools Discussion

- Brief review of the components of the Community School model and updates on where we are in implementation
- Updates from Resource Coordinators from Mendota and Leopold Elementary Schools
- Intersections with M.O.S.T.
- Discussion of shared governance / leadership



What is a Community School?

A welcoming and inclusive place that builds on the assets of the community to help serve the identified needs of students, families and community through coordinated, strategic partnerships

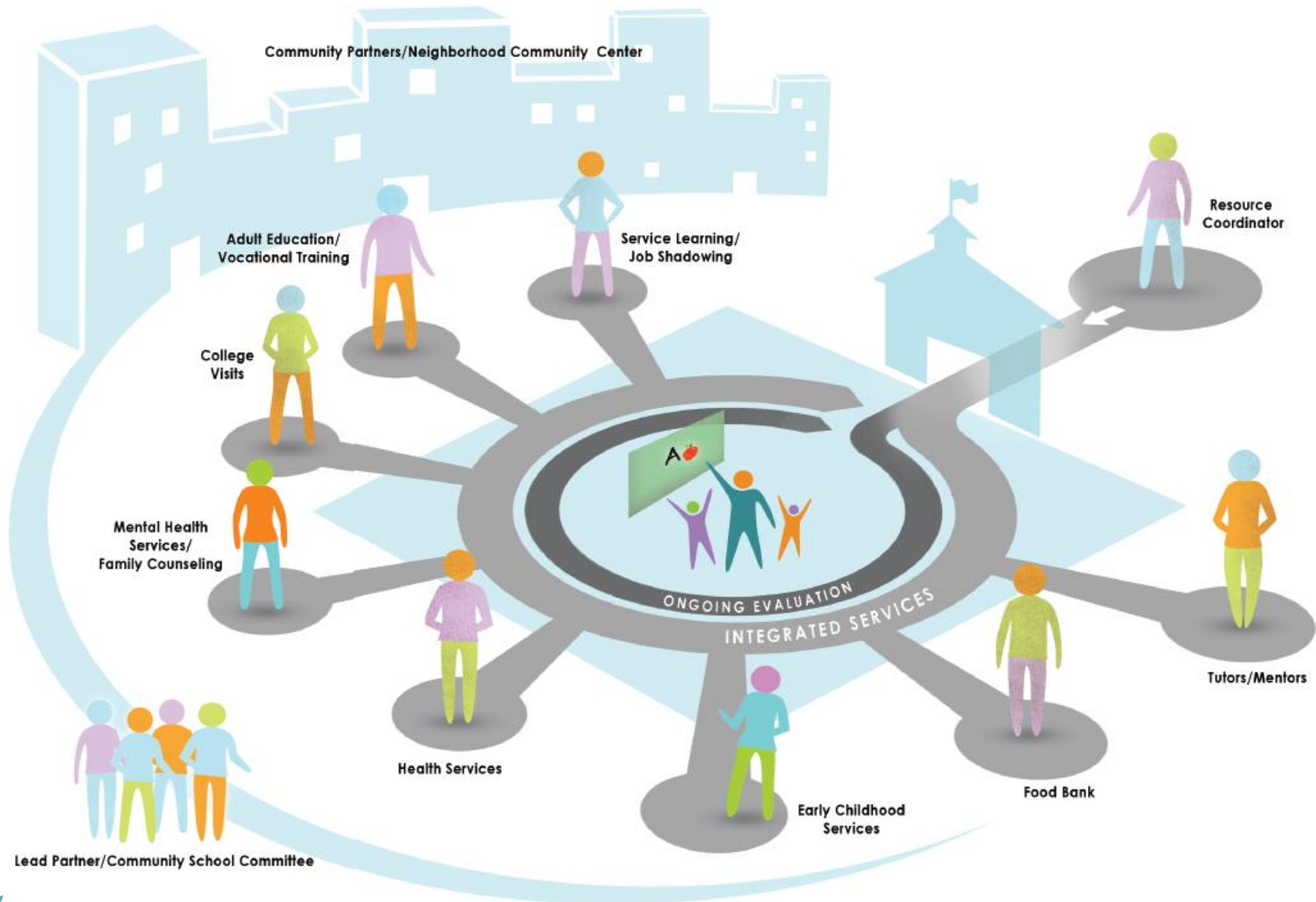


Components of a Community School

- A Community School Committee (CSC)
- Resource Coordinator (RC)
- Lead Partner(s) organization(s)
- Defined set of core programs or services
- Sustainable funding model



Community School Components



Updates from Resource Coordinators

Sami Clausen-Ruppert at Leopold

Stacy Broach at Mendota

Community School Committees at schools

Community conversations

Needs Assessment

Asset Mapping

Coordinated Plan for Services / Programs



Updates on Lead Partner(s) & Funding Model

Lead Partner status & next steps

Next steps with funding model

- Resource Coordinator 1 year covered
 - 50% Madison Community Foundation
 - 50% MMSD FYCE
 - Sustainability & Scalability

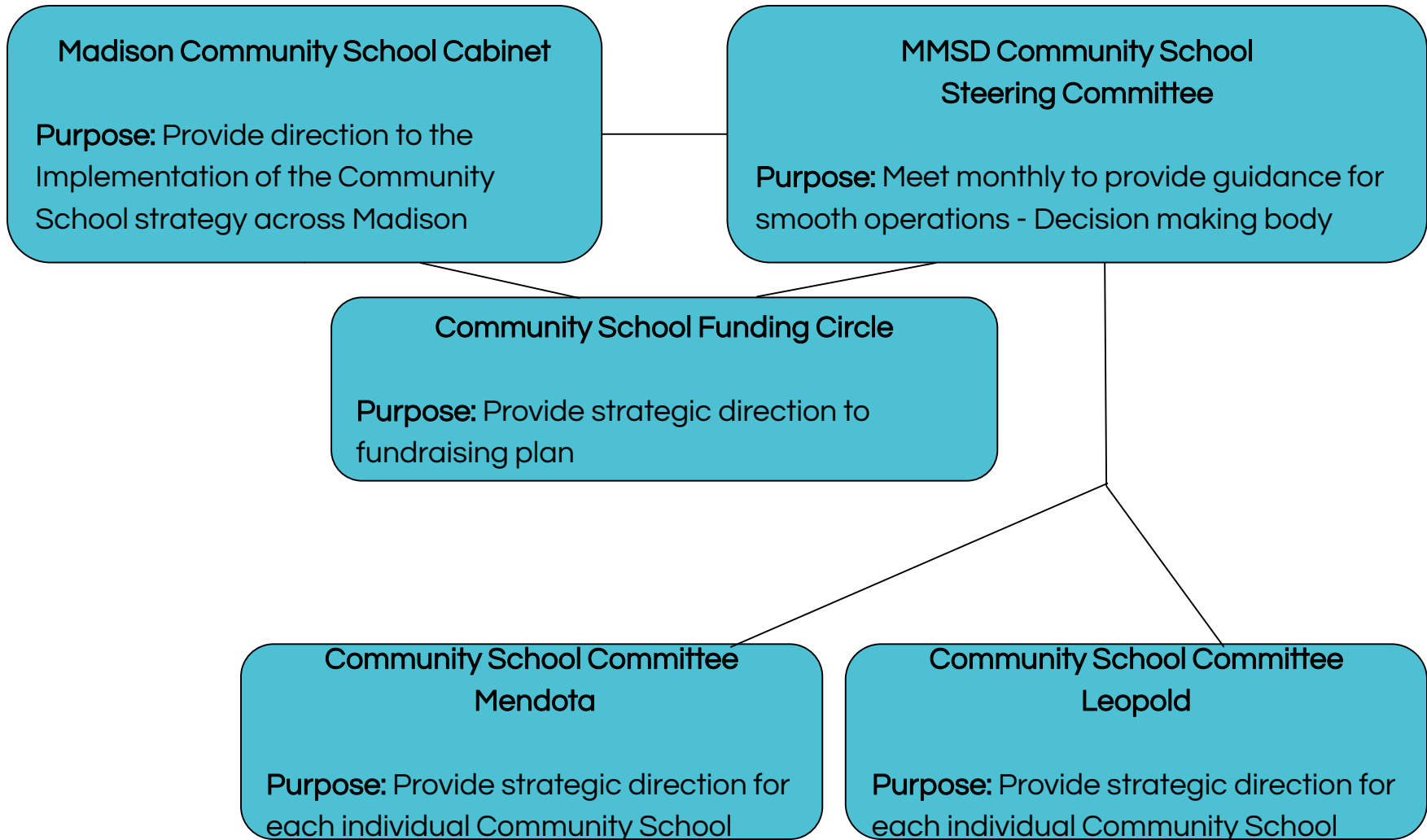


Intersections with M.O.S.T.

- Developing the **MIS data system** & data points will help track participation/access, quality & youth outcomes
- **Program Finder** will be a resource promoted at Community Schools



Shared Leadership



Purpose of the Cabinet

- To provide **high-level strategic direction** for the implementation of Community Schools as a strategy that focuses on student learning by bringing families, schools and community together to address neighborhood-based barriers to opportunity and create solutions at the local level. This group will:
 - Set a **community-wide strategic vision** by sharing data and ideas that will inform the way Community Schools meet the needs in the community
 - Discuss and act on any **community-wide policy alignment** that impacts funding, programs and services
 - **Review evaluation** outcomes
 - Develop a strategy for **broad community engagement**



Who Should Be Involved?

Decision-makers (or those who represent decision makers)

- City,
- County,
- School District,
- United Way of Dane County,
- Madison Teachers Incorporated,
- Workforce Development of South Central Wisconsin,
- Justified Anger, Latino Education Council, Hmong Education Council - Others?



Role of City Ed Committee

What ideas do you have for creating the shared leadership that is needed to make Community Schools sustainable and scalable in our community?

What role do you think the City Ed Committee has in the vision of shared leadership?

