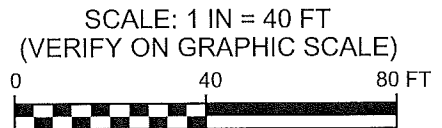
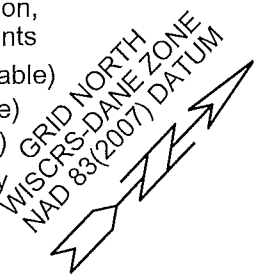


RELOCATION ORDER APPROVED BY THE COMMON COUNCIL:	
CITY CLERK	DATE
RELOCATION ORDER APPROVED BY THE BOARD OF PUBLIC WORKS:	
EXECUTIVE SECRETARY	DATE
RELOCATION ORDER APPROVED BY THE PLAN COMMISSION:	
EXECUTIVE SECRETARY	DATE



- LEGEND:
- ① Relocation Parcel # (see Schedule of Interests Required)
 - ▨ Fee Acquisition for transportation, parkland and other improvements
 - Found monument (see Point Table)
 - Set monument (see Point Table)
 - 14 Point Number (see Point Table)
 - F Parcel ID from boundary survey filed as #2009-00707, Dane County Surveyor's Office



**CITY OF MADISON
RELOCATION ORDER**

"PLAT OF LAND INTERESTS REQUIRED FOR THE EXPANSION OF CENTRAL PARK, TO INCLUDE TRANSPORTATION AND OTHER PUBLIC IMPROVEMENTS", BEING PARK OF BLOCKS 185 AND 199-200, FARWELL'S REPLAT OF A PART OF THE VILLAGE OF MADISON (A.K.A. FARWELL'S REPLAT OF BLOCKS 165-240), RECORDED AS DOCUMENT NO. 106, DANE COUNTY REGISTRY, LOCATED IN THE SE1/4 OF THE NE1/4 OF SECTION 13, T7N R9E, AND IN THE SW1/4 OF THE NW1/4 OF SECTION 7, T7N R10E, CITY OF MADISON, DANE COUNTY, WISCONSIN.

CITY ENGR. DIV. PROJ# 10525
REAL ESTATE PROJECT NO. 10890
COUNTY CLERK FILE NO. _____

DATE: JUL 6 2016
REVISED:

GRID NORTH
WISCONSIN DANE ZONE
NAD 83 (2007) DATUM

SCALE: 1 IN = 40 FT
(VERIFY ON GRAPHIC SCALE)

LEGEND:

- ① Relocation Parcel # (see Schedule of Interests Required)
- ▨ Fee Acquisition for transportation, parkland and other improvements
- Found monument (see Point Table)
- Set monument (see Point Table)

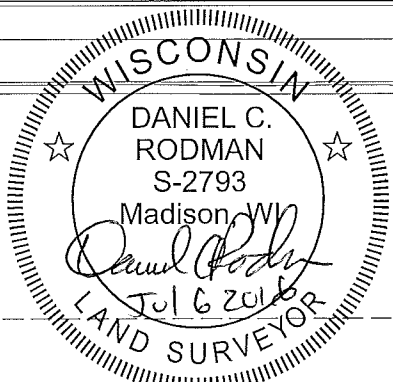
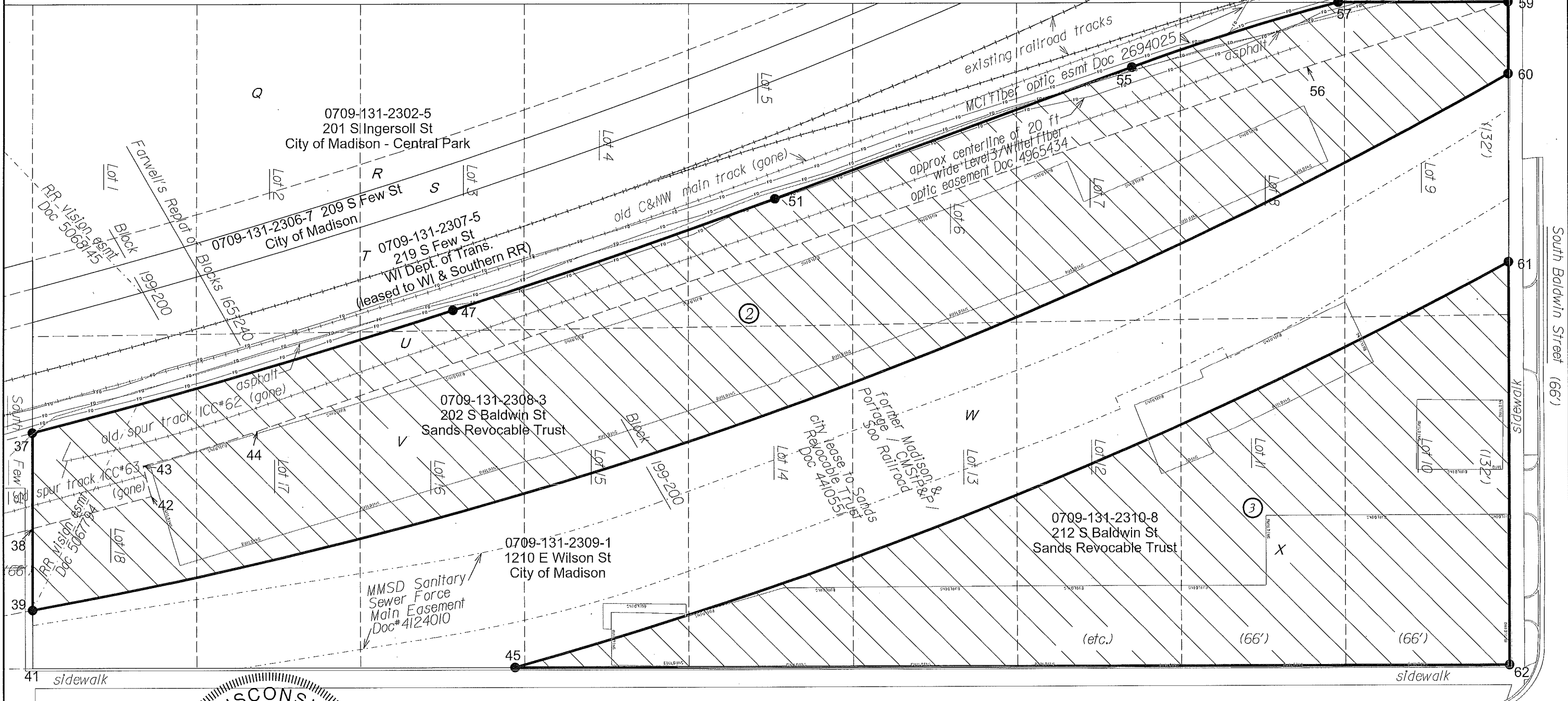
- 14 Point Number (see Point Table)
- F Parcel ID from boundary survey filed as #2009-00707, Dane County Surveyor's Office

Section Tie Detail
(not to scale)

E 1/4-corner
Section 13 T7N
R9E - see 101
Point Table

● 100 NE corner Section
13 T7N R9E - see
Point Table

59= north corner
Block 199-200



**CITY OF MADISON
RELOCATION ORDER**

"PLAT OF LAND INTERESTS REQUIRED FOR THE EXPANSION OF CENTRAL PARK, TO INCLUDE TRANSPORTATION AND OTHER PUBLIC IMPROVEMENTS", BEING PARK OF BLOCKS 185 AND 199-200, FARWELL'S REPLAT OF A PART OF THE VILLAGE OF MADISON (A.K.A. FARWELL'S REPLAT OF BLOCKS 165-240), RECORDED AS DOCUMENT NO. 106, DANE COUNTY REGISTRY, LOCATED IN THE SE 1/4 OF THE NE 1/4 OF SECTION 13, T7N R9E, AND IN THE SW 1/4 OF THE NW 1/4 OF SECTION 7, T7N R10E, CITY OF MADISON, DANE COUNTY, WISCONSIN.

CITY ENGR. DIV. PROJ# 10525
REAL ESTATE PROJECT NO. 10890
COUNTY CLERK FILE NO.

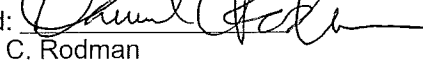
DATE: JUL 6 2016
REVISED:

POINT TABLE & NOTES:

- Horizontal coordinates are Dane County Coordinates, U.S. survey feet, NAD83(2007) datum, computed from a combined adjustment of total station measurements and RTK GPS measurements from the Emil Street base station (MAON) at 43°02'12.78277"N, 89°24'34.27099"W (Easting 814396.30, Northing 469049.99 U.S. survey feet). The Wisconsin Coordinate Reference Systems (WISCRS) parameters were used to compute Easting, Northing coordinates. See http://gis.cityofmadison.com/Madison_GPS/ and www.sco.wisc.edu
- Coordinates are shown to 0.0001 foot only to allow check of bearings. Coordinates are not actually known to 0.0001 foot.
- Monument dimensions in inches, outside diameter (unless noted)

Pt	Northing	Easting	Monument
9	485918.2408	825903.7475	Found 3/4 inch rod
11	485928.7326	825893.6416	Found 3/4 inch rod
14	486160.9244	826155.9472	Found 3/4 inch rod
15	486195.5935	826191.9757	Found 3/4 inch rod. East corner Block 185.
16	486197.0471	826181.0443	Computed corner
18	486202.7958	826185.0384	Found 3/4 inch rod
19	486204.7578	826183.1486	Computed corner
21	486213.1903	826157.8092	APPROXIMATE computed corner (referenced spur track gone)
23	486223.9462	826164.6659	APPROXIMATE computed corner (referenced spur track gone)
25	486251.9111	826137.7297	Found 3/4 inch rod
37	486309.2715	826174.1167	Found 3/4 inch rod
38	486281.6581	826200.7144	APPROXIMATE computed corner (referenced spur track gone)
39	486258.1160	826223.3905	Found 3/4 inch rod
41	486241.3567	826239.5334	Found 3/4 inch rod. South corner Block 199-200
42	486324.0385	826226.2597	APPROXIMATE computed corner (referenced spur track gone)
43	486330.5178	826215.3458	APPROXIMATE computed corner (referenced spur track gone)
44	486372.5077	826239.0406	APPROXIMATE computed corner (referenced spur track gone)
45	486376.0177	826379.4748	Found 3/4 inch rod
47	486461.9040	826262.1617	Found metal Magnail in asphalt
51	486583.7299	826324.7080	Found metal Magnail in asphalt
55	486720.9329	826391.9667	Found metal Magnail in asphalt
56	486769.9537	826442.9221	APPROXIMATE computed corner (referenced spur track gone)
57	486797.2415	826433.9662	Found 3/4 inch rod
58	486855.5726	826472.9061	Computed corner in Railroad Street right-of-way
59	486844.7216	826483.3543	Found metal Magnail in asphalt. North corner Block 199-200
60	486823.9801	826503.3260	Found 3/4 inch rod
61	486769.6815	826555.6092	Found 3/4 inch rod
62	486653.3206	826667.6513	Found metal Magnail in concrete. East corner Block 199-200
100	488361.6500	826483.9200	Found chiseled X on east rim of water valve box representing NE corner Section 13, T7N R9E
101	485546.1200	826481.6300	Found brass cap representation E 1/4-corner Section 13, T7N R9E

I certify that this survey was executed under my direction and control, that it complies with Wisconsin Administrative Code A-E 7, and Section 32.05(1) of the Wisconsin Statutes, and is correct to the best of my knowledge and belief.

Signed: 
 Daniel C. Rodman
 WI Professional Land Surveyor #2793
 210 MLK Jr Blvd, Rm 104, Madison, WI 53703

Date: Jul 6 2016



LINE & CURVE TABLE:

SUBJECT PARCEL 1:							
From	To	Bearing	Distance	Radius	Curve Direction	Arc Length	Central Angle
Tie from east corner Block 185:							
15	18	N43°55'35"W	10.00 ft				
Boundary:							
18	25	N43°55'36"W	68.19 ft				
25	11	S37°03'46"W	405.00 ft	2,901.04	Right	405.33 ft	08°00'19"
11	9	S43°55'36"E	14.57 ft				
9	14	N46°06'06"E	350.00 ft				
14	18	N34°47'26"E	50.99 ft				
SUBJECT PARCEL 2:							
From	To	Bearing	Distance	Radius	Curve Direction	Arc Length	Central Angle
59	60	S43°55'00"E	28.79 ft				
60	39	S26°19'19"W	631.32 ft	1,877.08	Right	634.33 ft	19°21'45"
39	37	N43°55'36"W	71.03 ft				
37	47	N29°58'42"E	176.21 ft	2,901.04	Left	176.23 ft	03°28'50"
47	51	N27°10'35"E	136.94 ft	3,695.57	Left	136.95 ft	02°07'24"
51	55	N26°06'53"E	152.80 ft				
55	57	N28°49'41"E	87.10 ft	920.00 ft	Right	87.14 ft	05°25'36"
57	59	N46°07'42"E	68.51 ft				
SUBJECT PARCEL 3:							
From	To	Bearing	Distance	Radius	Curve Direction	Arc Length	Central Angle
62	45	S46°06'06"W	399.93 ft				
45	61	N24°06'17"E	431.27 ft	1,943.08	Left	432.16 ft	12°44'35"
61	62	S43°55'00"E	161.53 ft				

Additional dimensions for reference:

From	To	Bearing	Distance	Radius	Curve Direction	Arc Length	Central Angle
14	15	N46°06'06"E	50.00 ft				
14	16	N34°47'26"E	43.99 ft				
15	18	N43°55'35"W	10.00 ft				
15	41	N46°06'06"E	66.00 ft				
16	18	N34°47'27"E	7.00 ft				
16	21	N55°12'34"W	28.29 ft				
18	19	N43°55'34"W	2.72 ft				
19	23	N43°55'36"W	26.64 ft				
21	23	N32°31'00"E	12.76 ft				
23	25	N43°55'36"W	38.83 ft				
23	38	N31°59'24"E	68.05 ft	3,700.00	Left	68.05 ft	01°03'13"
25	37	N32°23'21"E	67.93 ft	2,901.04	Left	67.93 ft	01°20'30"
37	38	S43°55'36"E	38.34 ft				
38	39	S43°55'36"E	32.69 ft				
38	42	N31°04'48"E	49.48 ft	3,700.00	Left	49.48 ft	00°45'59"
39	41	S43°55'36"E	23.27 ft				
41	45	N46°06'06"E	194.21 ft				
41	62	N46°06'06"E	594.14 ft				
42	43	N59°18'13"W	12.69 ft				
43	44	N29°26'09"E	48.21 ft	606.20 ft	Left	48.23 ft	04°33'30"
44	56	N27°09'25"E	446.69 ft				
56	59	N28°24'11"E	85.00 ft				
57	58	N33°43'33"E	70.13 ft	920.00 ft	Right	70.15 ft	04°22'08"
58	59	S43°54'60"E	15.06 ft				
59	60	S43°55'00"E	28.79 ft				
59	62	S43°55'00"E	265.71 ft				
60	61	S43°55'00"E	75.38 ft				
61	62	S43°55'00"E	161.53 ft				

SCHEDULE OF INTERESTS REQUIRED

PARCEL #	OWNER NAME	FEE AREA REQUIRED	PLE AREA REQUIRED	TLE AREA REQUIRED	DOCUMENT NUMBER
①	Sands Revocable Trust	16,391 sq ft 0.3763 acres			2516130
②	Sands Revocable Trust	45,290 sq ft 1.0397 acres			2516130
③	Sands Revocable Trust	28,848 sq ft 0.6623 acres			2516133

**CITY OF MADISON
RELOCATION ORDER**

"PLAT OF LAND INTERESTS REQUIRED FOR THE EXPANSION OF CENTRAL PARK, TO INCLUDE TRANSPORTATION AND OTHER PUBLIC IMPROVEMENTS", BEING PARK OF BLOCKS 185 AND 199-200, FARWELL'S REPLAT OF A PART OF THE VILLAGE OF MADISON (A.K.A. FARWELL'S REPLAT OF BLOCKS 165-240), RECORDED AS DOCUMENT NO. 106, DANE COUNTY REGISTRY, LOCATED IN THE SE1/4 OF THE NE1/4 OF SECTION 13, T7N R9E, AND IN THE SW1/4 OF SECTION 7, T7N R10E, CITY OF MADISON, DANE COUNTY, WISCONSIN.

CITY ENGR. DIV. PROJ# 10525
 REAL ESTATE PROJECT NO. 10890
 COUNTY CLERK FILE NO. _____

DATE: JUL 6 2016
 REVISED: _____