

L A K E M O N O N A

ORDINARY HIGH WATER
MARK = 845.6' NAVD 88
OR 845.82' NGVD 29

EDGE OF WATER
JANUARY 5, 2016
ELEV. 845.14' NAVD 88

FLOOD PLAIN
847.5 NAVD 88
OR
847.7' NGVD 29

DESCRIPTION:

LOT 14, BLOCK 3, HOBOKEN BEACH,
BEING PART OF THE SOUTHEAST 1/4
OF THE SOUTHEAST 1/4 OF SECTION
19, T7N, R10E, CITY OF MADISON,
DANE COUNTY, WISCONSIN.

B L O C K 3

L O T 13

PREPARED FOR:

NEIL HALLEEN
502 N. EAUCLAIRIE AVE.
MADISON, WI 53705

B L O C K 1
L O T 12
G R I F F I T H ' S
B E A C H

LEGEND

- = FOUND 3/4" REBAR (UNLESS NOTED)
- ⊙ = FOUND 1 IRON PIPE (UNLESS NOTED)
- ⊘ = MANHOLE
- (##) = RECORDED AS

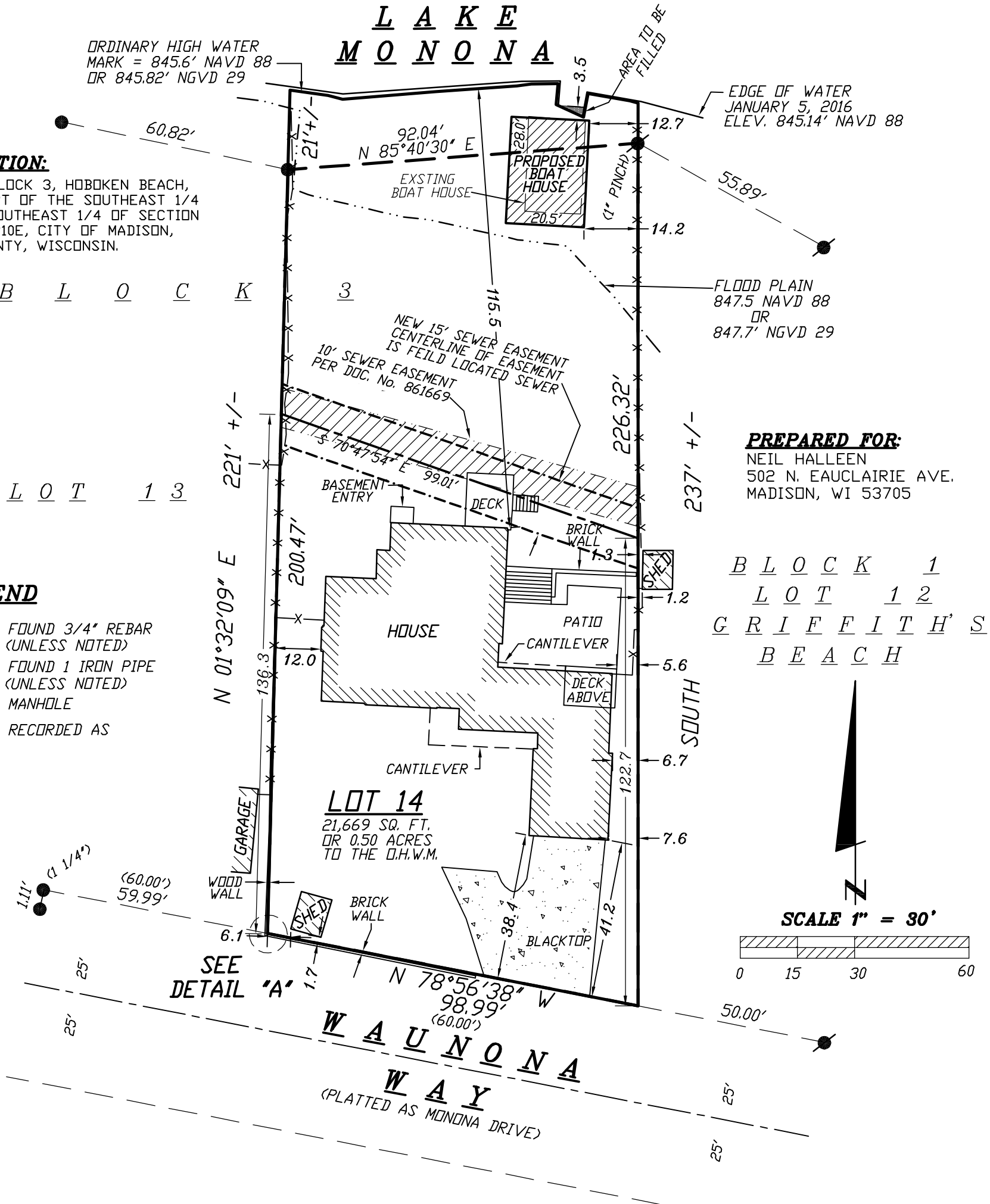


EXHIBIT A