

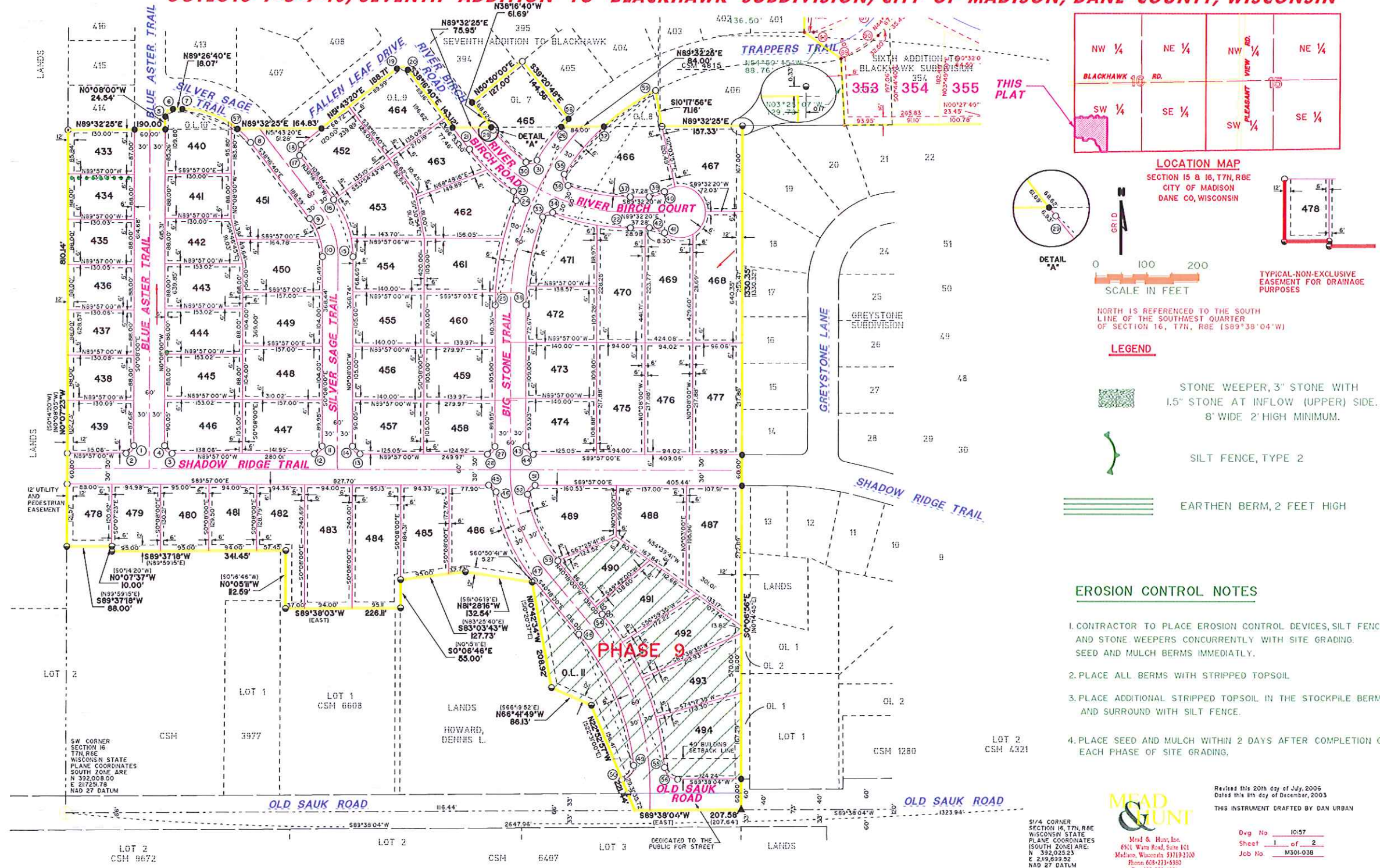
LOCATION PLAN FOR

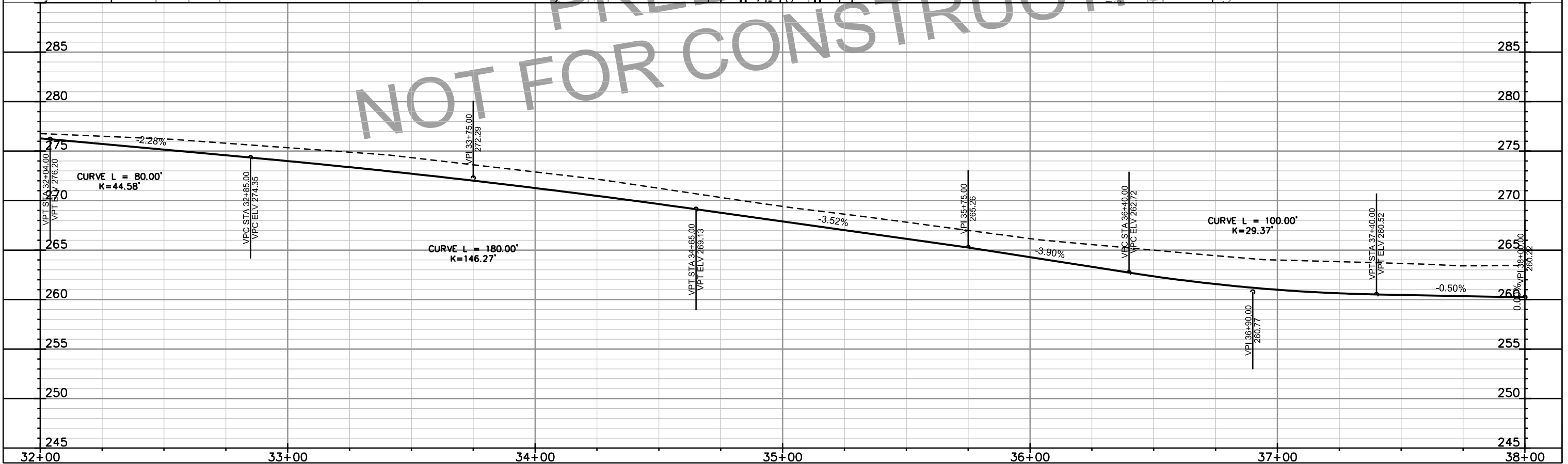
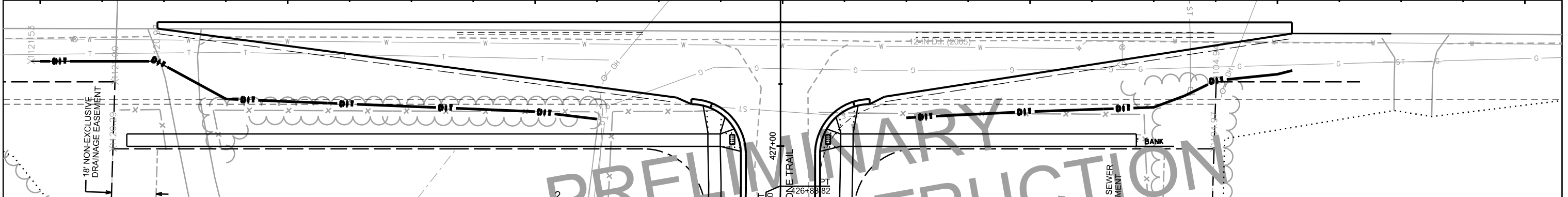
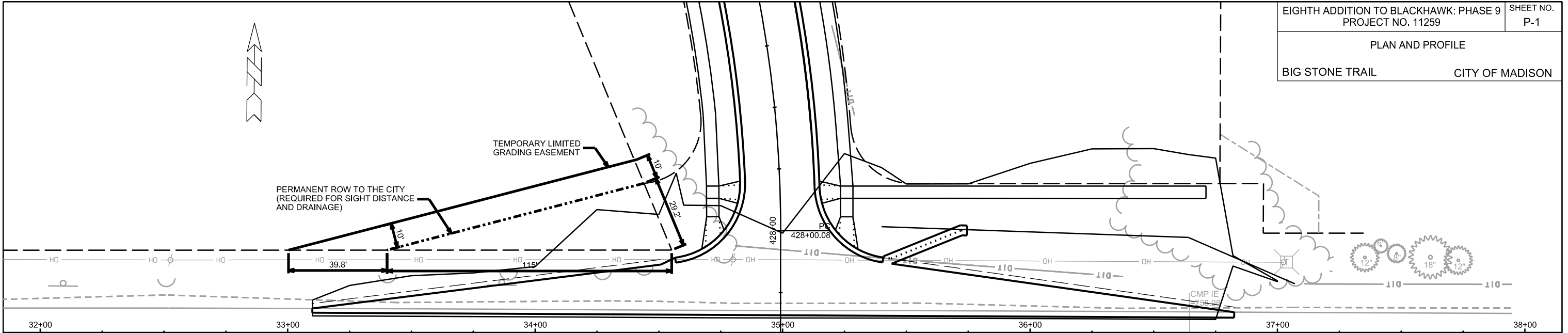
CITY PROJ. NO. 53B2

EIGHTH ADDITION TO BLACKHAWK SUBDIVISION - PHASE 9

LOTS 490 - 494

LOCATED IN THE SW1/4-SW1/4 AND NW1/4-SW1/4 OF SECTION 16, T7N, R8E, ALSO BEING A REDIVISION OF OUTLOTS 7-8-9-10, SEVENTH ADDITION TO BLACKHAWK SUBDIVISION, CITY OF MADISON, DANE COUNTY, WISCONSIN





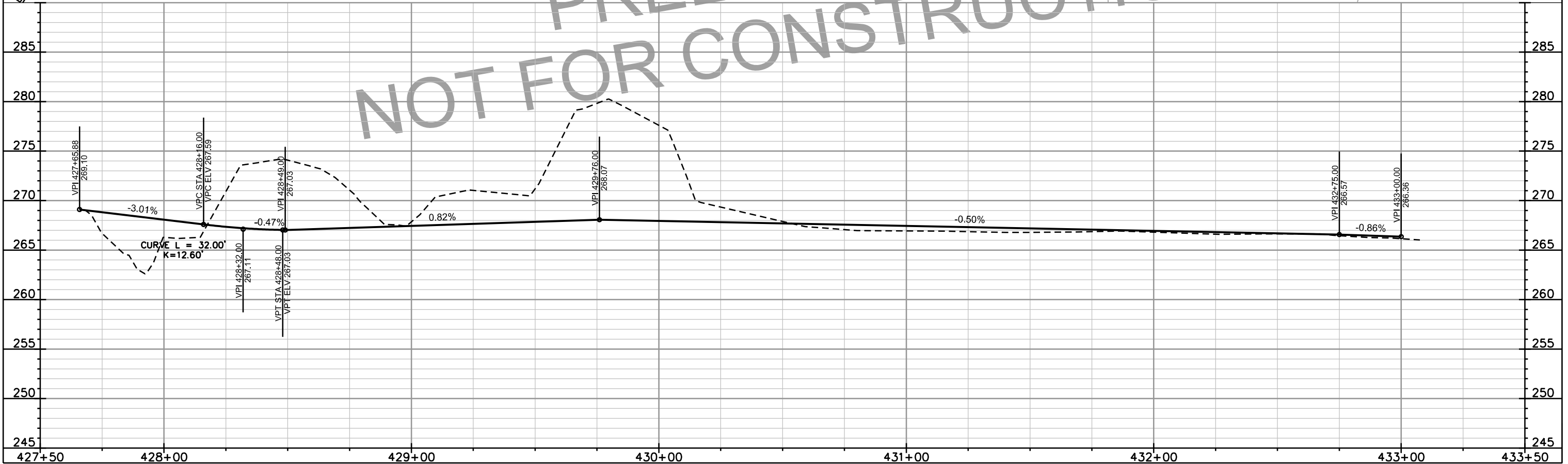
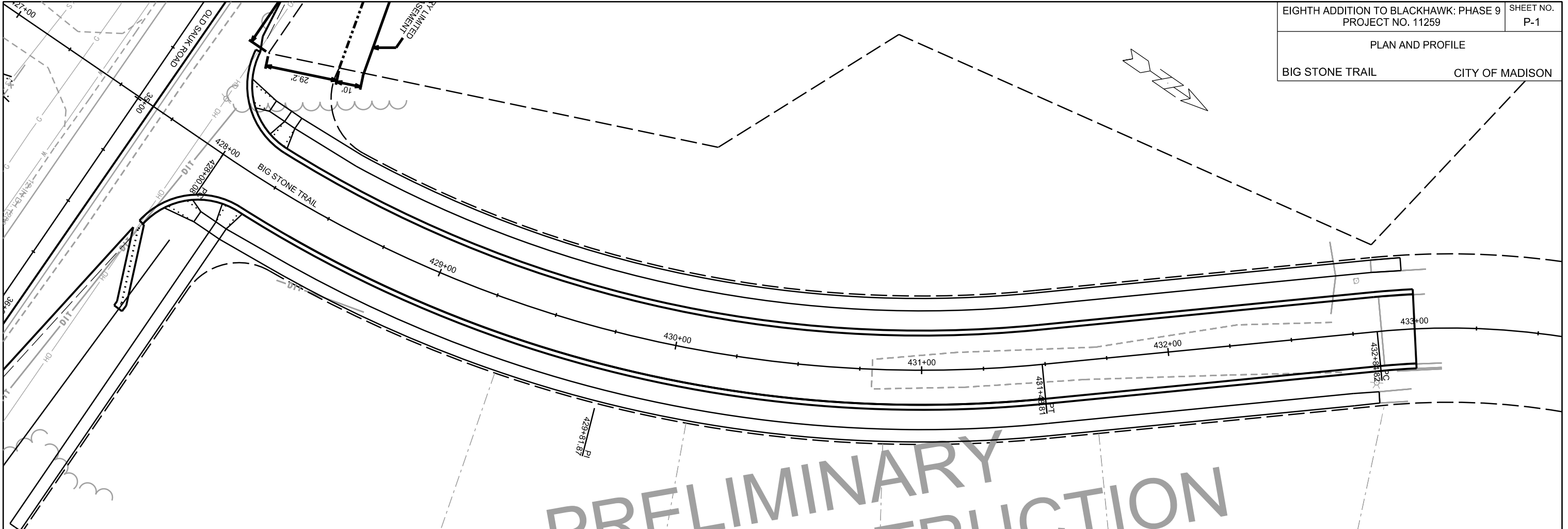
PRELIMINARY
NOT FOR CONSTRUCTION

PLOT SCALE: _____

PLOT NAME: _____

REV. DATE: _____

ORIGINATOR: CITY OF MADISON, STREETS DIVISION



PRELIMINARY
NOT FOR CONSTRUCTION

PLOT SCALE: _____

PLOT NAME: _____

REV. DATE: _____

ORIGINATOR: CITY OF MADISON, STREETS DIVISION