

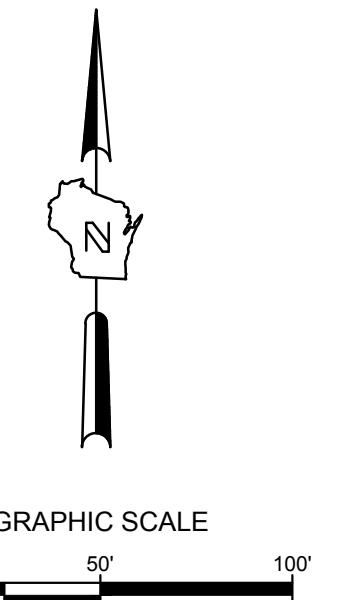
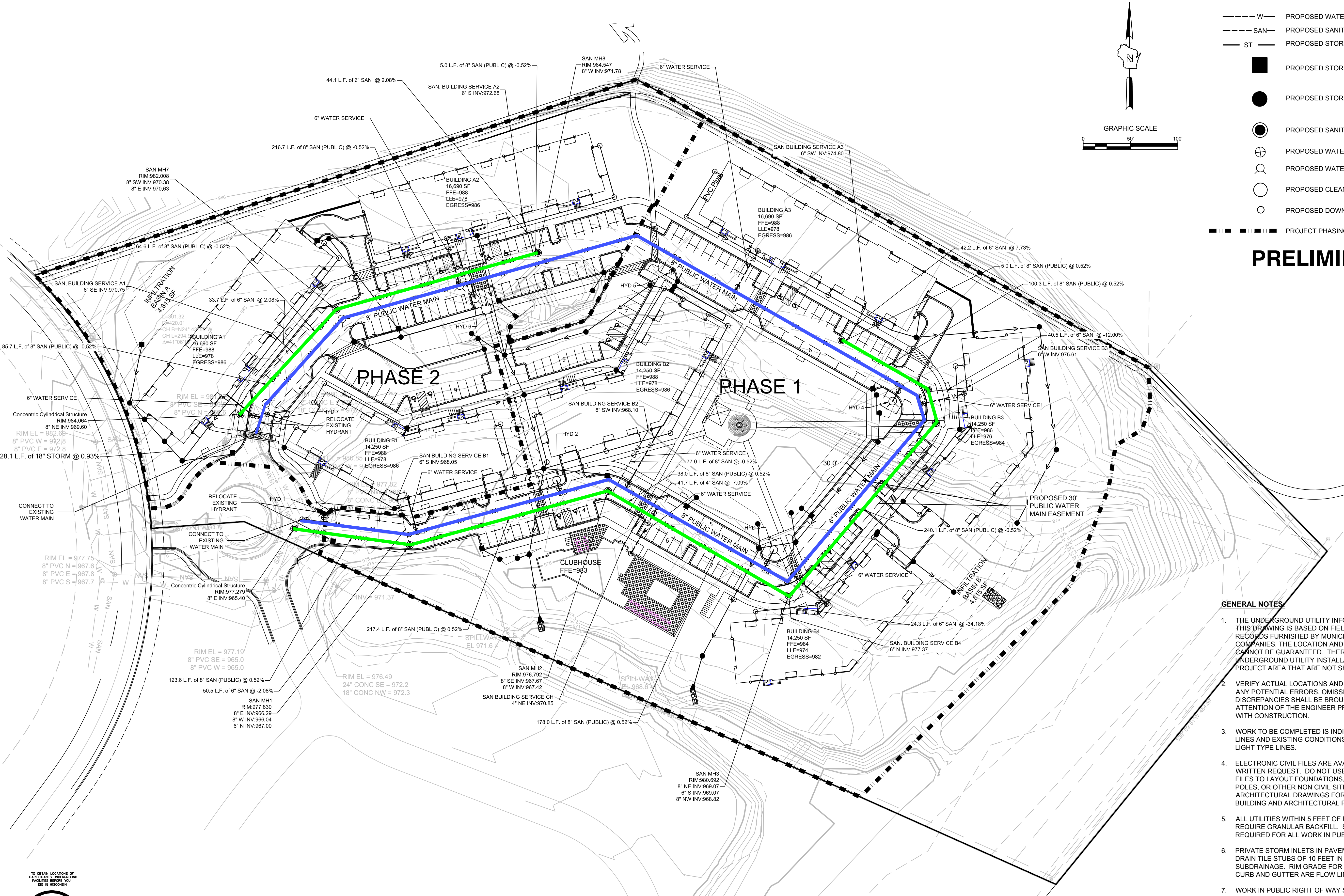
File: I:\Joseph.Lee & Associates\156693 Tancho Drive\060 CAD\C - Civil\1500 Production - Civil Plans\506-Utility Plan\156693 UTILITY P.dwg



CALL DIGGERS HOTLINE  
1-800-242-8511  
TOLL FREE

MS STATUTE 182.07(7)(17A)  
REQUIRES MIN. 3 WORK DAYS  
NOTICE BEFORE YOU DIGGATE.  
MILW. AREA 259-1181

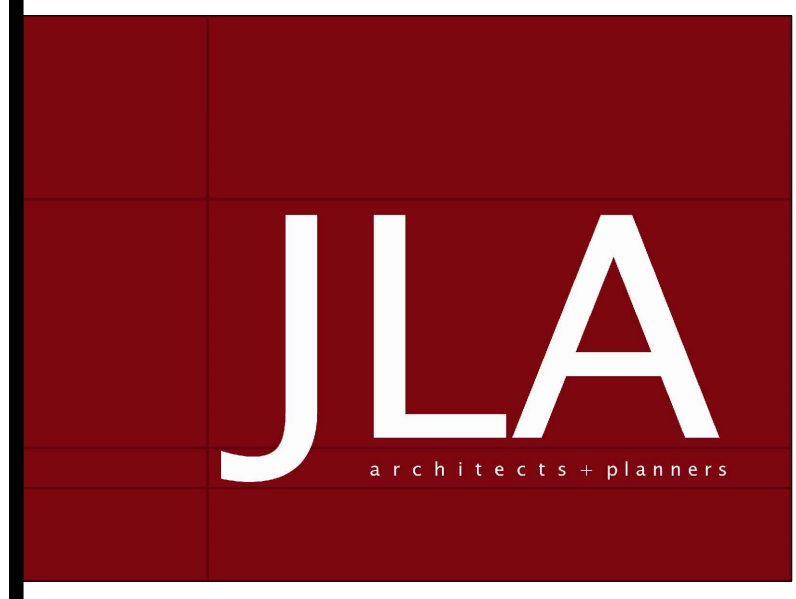
THE UNDERGROUND UTILITY INFORMATION SHOWN ON THIS MAP IS BASED ON FIELD MARKINGS AND INFORMATION FURNISHED BY UTILITY COMPANIES AND THE LOCAL MUNICIPALITY. WHILE THIS INFORMATION IS BELIEVED TO BE RELIABLE, ITS ACCURACY AND COMPLETENESS CANNOT BE GUARANTEED.



- LEGEND:**
- W --- PROPOSED WATER SERVICE
  - SAN --- PROPOSED SANITARY SEWER
  - ST --- PROPOSED STORM SEWER
  - PROPOSED STORM INLET (A C403)
  - PROPOSED STORM MANHOLE (B C403)
  - PROPOSED SANITARY MANHOLE (C C403)
  - ⊕ PROPOSED WATER MAIN VALVE
  - ⊙ PROPOSED WATER HYDRANT
  - PROPOSED CLEAN OUT
  - PROPOSED DOWN SPOUT
  - PROJECT PHASING LINE

**PRELIMINARY**

- GENERAL NOTES:**
- THE UNDERGROUND UTILITY INFORMATION SHOWN ON THIS DRAWING IS BASED ON FIELD LOCATIONS AND/OR RECORDS FURNISHED BY MUNICIPALITIES AND UTILITY COMPANIES. THE LOCATION AND ACCURACY OF WHICH CANNOT BE GUARANTEED. THERE MAY BE ADDITIONAL UNDERGROUND UTILITY INSTALLATIONS WITHIN THE PROJECT AREA THAT ARE NOT SHOWN.
  - VERIFY ACTUAL LOCATIONS AND INVERTS IN THE FIELD. ANY POTENTIAL ERRORS, OMISSIONS, OR DISCREPANCIES SHALL BE BROUGHT TO THE ATTENTION OF THE ENGINEER PRIOR TO PROCEEDING WITH CONSTRUCTION.
  - WORK TO BE COMPLETED IS INDICATED IN BOLD TYPE LINES AND EXISTING CONDITIONS ARE INDICATED BY LIGHT TYPE LINES.
  - ELECTRONIC CIVIL FILES ARE AVAILABLE UPON WRITTEN REQUEST. DO NOT USE ELECTRONIC CIVIL FILES TO LAYOUT FOUNDATIONS, COLUMN LINES, LIGHT POLES, OR OTHER NON CIVIL SITE WORK. REFER TO ARCHITECTURAL DRAWINGS FOR DIMENSIONS OF BUILDING AND ARCHITECTURAL FEATURES.
  - ALL UTILITIES WITHIN 5 FEET OF PAVED AREAS SHALL REQUIRE GRANULAR BACKFILL. SLURRY BACKFILL IS REQUIRED FOR ALL WORK IN PUBLIC RIGHT OF WAY.
  - PRIVATE STORM INLETS IN PAVEMENT SHALL REQUIRE DRAIN TILE STUBS OF 10 FEET IN TWO DIRECTIONS FOR SUBDRAINAGE. RIM GRADE FOR STORM INLETS IN CURB AND GUTTER ARE FLOW LINE GRADES.
  - WORK IN PUBLIC RIGHT OF WAY SHALL FOLLOW MATERIAL AND INSTALLATION REQUIREMENTS PER MUNICIPAL AND/OR COUNTY.
  - PRIVATE STORM SEWER 12-INCH DIAMETER OR LARGER SHALL BE HDPE. BELOW 12-INCH DIAMETER SHALL BE PVC SDR-35 ASTM D3034. PRIVATE WATER MAIN SHALL BE CLASS 150 DR 18 PVC CONFORMING TO AWWA C-900. PRIVATE SANITARY SEWER SHALL BE PVC SDR-35 ASTM D3034.
  - COORDINATE FINAL LOCATION AND DESIGN OF PRIVATE UTILITY SERVICES (ELECTRIC, GAS, PHONE, CABLE) WITH UTILITY COMPANIES.
  - ALL PUBLIC SEWER TO BE IN ACCORDANCE WITH THE CITY OF MADISON STANDARDS AND STANDARD SPECIFICATIONS FOR SEWER AND WATER CONSTRUCTION IN WISCONSIN.



JLA PROJECT NUMBER: 15-0617



**SIGMA GROUP**  
Single Source. Sound Solutions.  
www.thesigmagroup.com  
1300 West Canal Street  
Milwaukee, WI 53233  
Phone: 414-643-4200  
Fax: 414-643-4210

Fiduciary Real Estate Development

Staff Review Submittal

22 SLATE

**PROGRESS DOCUMENTS**  
These documents reflect progress and intent and may be subject to change, including additional detail. These are not final construction documents and should not be used for final bidding or construction-related purposes.

DATE OF ISSUANCE: JANUARY 6, 2016

REVISION SCHEDULE		
Mark	Description	Date
1	Staff Review Submittal	April 11, 2016

SHEET TITLE

**UTILITY PLAN**

SHEET NUMBER

**C 300**

REFER TO SHEET C301 AND C302 FOR STORM SEWER PLANS