

**EXHIBIT B**

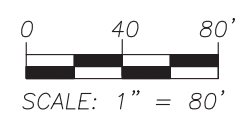
ACCESS EASEMENT, LOCATED IN PART OF THE NORTHEAST QUARTER OF THE NORTHWEST QUARTER OF SECTION 32, TOWNSHIP 08 NORTH, RANGE 10 EAST, CITY OF MADISON, DANE COUNTY, WISCONSIN.

PREPARED BY:  
**JSD Professional Services, Inc.**  
 • Engineers • Surveyors • Planners  
 161 HORIZON DRIVE, SUITE 101  
 VERONA, WISCONSIN 53593  
 PHONE: (608)848-5060

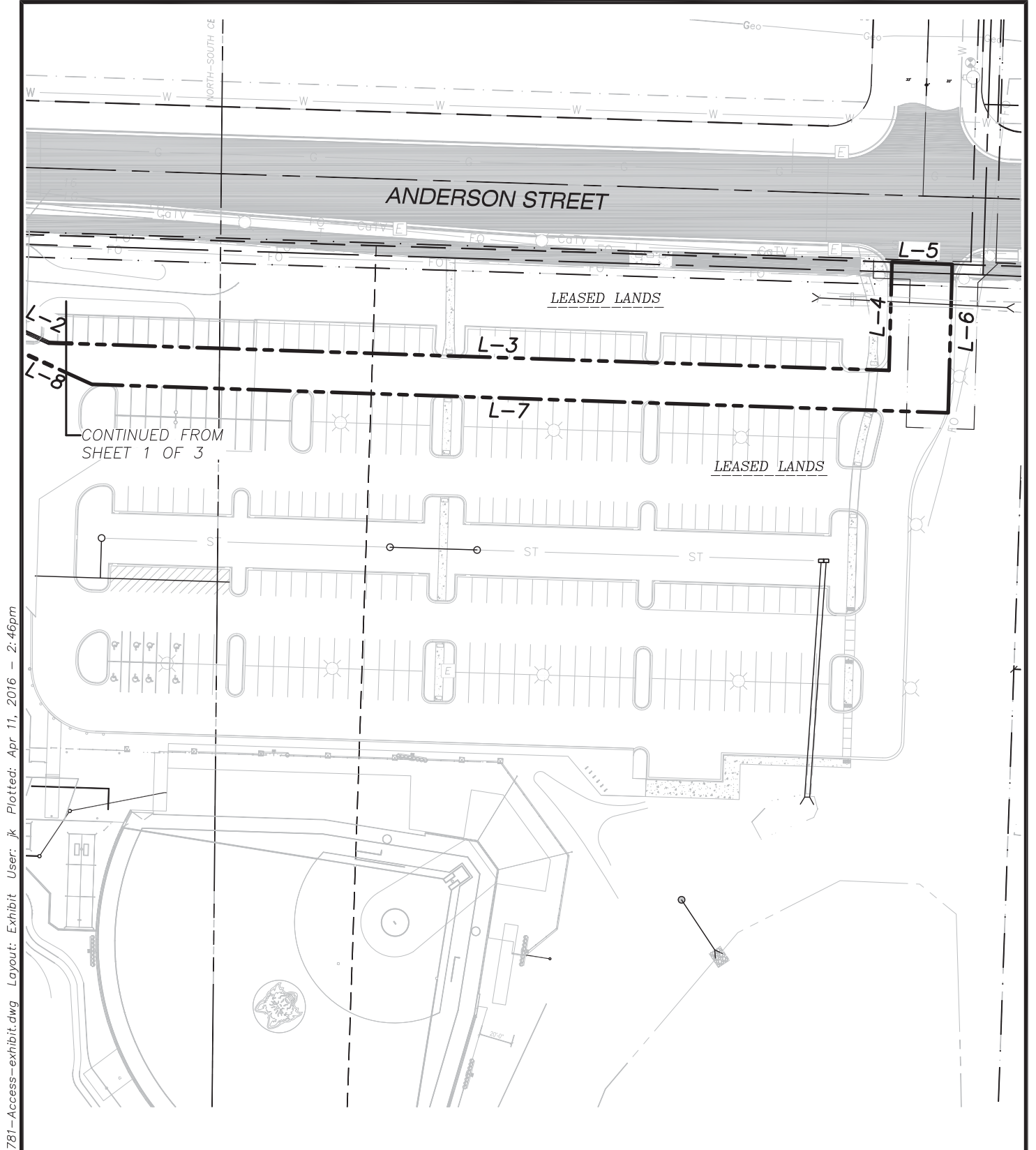
PREPARED FOR:  
 MADISON COLLEGE  
 3550 ANDERSON ST.  
 MADISON, WI 53704

PROJECT NO: 15-6781A  
 FILE NO: A-345  
 FIELDBOOK/PG: -  
 SHEET NO: 1 OF 3

SURVEYED BY: -  
 DRAWN BY: JK  
 CHECKED BY: TJB  
 APPROVED BY: TJB



File: I:\2015\156781\DWG\Access-exhibit.dwg Layout: Exhibit User: jk Plotted: Apr 13, 2016 - 7:19am



CONTINUED FROM SHEET 1 OF 3

### EXHIBIT B

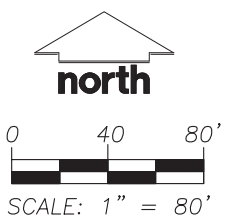
ACCESS EASEMENT, LOCATED IN PART OF THE NORTHEAST QUARTER OF THE NORTHWEST QUARTER OF SECTION 32, TOWNSHIP 08 NORTH, RANGE 10 EAST, CITY OF MADISON, DANE COUNTY, WISCONSIN.

PREPARED BY:  
**JSD Professional Services, Inc.**  
 Engineers • Surveyors • Planners  
 161 HORIZON DRIVE, SUITE 101  
 VERONA, WISCONSIN 53593  
 PHONE: (608)848-5060

PREPARED FOR:  
 MADISON COLLEGE  
 3550 ANDERSON ST.  
 MADISON, WI 53704

PROJECT NO: 15-6781A  
 FILE NO: A-345  
 FIELDBOOK/PG: -  
 SHEET NO: 2 OF 3

SURVEYED BY: -  
 DRAWN BY: JK  
 CHECKED BY: TJB  
 APPROVED BY: TJB






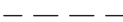


File: I:\2015\156781\DWG\156781-Access-exhibit.dwg Layout: Exhibit User: jk Plotted: Apr 11, 2016 - 2:46pm

File: I:\2015\156781\DWG\156781-Access-exhibit.dwg Layout: Exhibit User: jk Plotted: Apr 11, 2016 - 2:47pm

LINE TABLE		
LINE	BEARING	DISTANCE
L-1	S 88°10'57" E	372.56'
L-2	S 65°35'44" E	36.51'
L-3	S 88°06'57" E	501.98'
L-4	N 01°31'58" E	64.70'
L-5	S 87°54'10" E	36.00'
L-6	S 01°31'58" W	88.71'
L-7	N 88°05'44" W	511.66'
L-8	N 65°35'44" W	67.75'
L-9	N 88°10'57" W	370.18'
L-10	S 10°28'42" W	27.86'
L-11	S 00°00'00" E	171.85'
L-12	S 89°51'47" E	113.95'
L-13	N 01°50'15" E	31.68'
L-14	S 88°25'58" E	12.00'
L-15	S 01°50'15" W	116.76'
L-16	N 88°25'58" W	12.00'
L-17	N 01°50'15" E	23.05'
L-18	N 89°51'47" W	112.67'
L-19	N 00°00'00" E	171.92'
L-20	N 10°28'42" E	28.20'

CURVE TABLE					
CURVE	LENGTH	RADIUS	DELTA	CHORD	CHORD BEARING
<b>C1</b>	79.08'	62.89'	72°02'53"	73.97'	S 55°54'33" W
<b>C2</b>	97.45'	684.77'	8°09'14"	97.37'	S 15°43'46" W
<b>C3</b>	6.09'	45.22'	7°42'53"	6.08'	S 04°23'31" W
<b>C4</b>	36.69'	25.10'	83°44'19"	33.51'	S 42°05'49" E
<b>C5</b>	38.53'	25.00'	88°17'58"	34.83'	N 45°59'14" E
<b>C6</b>	40.01'	25.00'	91°42'02"	35.88'	N 44°00'46" W
<b>C7</b>	54.93'	37.10'	84°49'34"	50.05'	N 42°36'01" W
<b>C8</b>	8.01'	57.22'	8°01'17"	8.00'	N 04°29'10" E
<b>C9</b>	99.29'	696.77'	8°09'53"	99.21'	N 15°43'29" E
<b>C10</b>	94.17'	74.89'	72°02'42"	88.08'	N 55°54'04" E

**LEGEND**

-  GOVERNMENT CORNER
-  PARCEL BOUNDARY
-  SECTION LINE
-  RIGHT-OF-WAY LINE
-  CENTERLINE
-  CHORD LINE

**NOTES**

1. BEARINGS FOR THIS MAP ARE REFERENCED TO THE WISCONSIN COUNTY COORDINATE SYSTEM, DANE COUNTY (WCCS DANE). THE NORTH LINE OF THE NORTHWEST QUARTER IS RECORDED AS, N 88°39'00" W.

**EXHIBIT B**

ACCESS EASEMENT, LOCATED IN PART OF THE NORTHEAST QUARTER OF THE NORTHWEST QUARTER OF SECTION 32, TOWNSHIP 08 NORTH, RANGE 10 EAST, CITY OF MADISON, DANE COUNTY, WISCONSIN.

PREPARED BY:

**JSD** Professional Services, Inc.  
*Engineers • Surveyors • Planners*

161 HORIZON DRIVE, SUITE 101  
 VERONA, WISCONSIN 53593  
 PHONE: (608)848-5060

PREPARED FOR:

MADISON COLLEGE  
 3550 ANDERSON ST.  
 MADISON, WI 53704

PROJECT NO: 15-6781A

FILE NO: A-345

FIELDBOOK/PG: -

SHEET NO: 3 OF 3

SURVEYED BY: -

DRAWN BY: JK

CHECKED BY: TJB

APPROVED BY: TJB