

STREET USE PERMIT APPLICATION

EVENT INFORMATION

Name of Event: PurpleStride Madison 2016

Event Organizer/Sponsor: Pancreatic Cancer Action Network

Is Organizer/Sponsor a 501(c)3 non-profit agency?

☒ Yes ☐ No

MANDATORY: State Sales Tax Exemption Number:

ES#: 33-0841281

OPTIONAL: Federal Tax Exempt Number:

Address: 1500 Rosecrans Ave Ste 200

City/State/Zip: Manhattan Beach, CA 90266

Primary Contact: Catherine Villaverde

Work Phone: 3107063350

Email: cvillaverde@pancan.org

Phone During Event: 310-706-3350

Website: purplestride.org/madison

FAX: 3107250029

Secondary Contact: Lynn Fry

Work Phone: 608-513-0873

Email: lfry@pancanvolunteer.org

Phone During Event: 608-513-0873

Annual Event?

☒ Yes ☐ No

Charitable Event?

☒ Yes ☐ No

If Yes, Name of charity to receive donations: Pancreatic Cancer Action Network

Estimated Attendance: 2500

(CERTIFICATE OF INSURANCE MAY BE REQUIRED)

Public Amplification? (not allowed after 11 p.m.):

☒ Yes ☐ No

Hours: 8a to 11a

EVENT CATEGORY

☒ Run/Walk

☐ Music/Concert

☐ Festival

☐ Rally

☐ Parking (i.e., bagging meters)

☐ Other: _____

LOCATION REQUESTED

☐ Capitol Square (note specific blocks below)

☐ State St. Mall/800 State Street

☐ 30 on the Square (aka top of 100 block of State Street)

☐ Other (specific blocks/streets requested below)

Street Names and Block Numbers: Warner Park Neighborhood

EVENT DATE(S)/SCHEDULE

Date(s) of Event: May 7, 2016

Event Start and End Times: 8:00A-11:00A

Rain Date (if any): N/A

Set-Up Start Time: May 6, 9:00A

Take-Down Start Time and End Times: May 7, 11:00am

TAKE-DOWN TIME: START TO STREETS REOPENED

Will sponsor apply for temporary class B license to serve or sell beer/wine for this event?

☐ Yes ☒ No

If class B license is denied, will the event(s) occur?

☐ Yes ☒ No

[Signature] By initialing, I/we waive the 21-day decision requirement.

APPLICATION SIGNATURE

BY SIGNING THIS APPLICATION, THE "EVENT ORGANIZER/SPONSOR" LISTED ABOVE AGREES TO INDEMNIFY, DEFEND, AND HOLD THE CITY AND ITS OFFICERS, OFFICIALS, EMPLOYEES AND AGENTS HARMLESS AGAINST ALL CLAIMS, LIABILITY, LOSS, DAMAGE, OR EXPENSE INCURRED BY THE CITY ON ACCOUNT OF ANY INJURY TO OR DEATH OF ANY PERSON OR ANY DAMAGE TO PROPERTY CAUSED BY OR RESULTING FROM THE ACTIVITIES FOR WHICH THE PERMIT IS GRANTED.

Applicant Signature

[Signature]

Date

2/9/16

Detailed Timeline With Traffic Control

Friday, May 6, 2016

09:00am - Set-Up Tents & Tables in Warner Park

Saturday, May 7, 2016

05:30am - Set-up Start/Finish Line in the Warner Park parking lot

06:00am - Signage, mile markers and Aid Stations along courses

07:00am - Put cones along courses

07:30am - Registration and Participant Check-In

08:15am - Race Announcer begins announcements

09:00am - Opening Ceremonies

09:15am - Course Sentries arrive at assigned posts along the race courses

09:15am - City Of Madison Traffic Control arrives at the following Locations

Officer 1 - Corner of Forester Dr & Woodward Dr

Officer 2 - Corner of Woodward Dr and Sheridan Dr

Officer 3 - Corner of Sheridan Dr and Wyldewood Dr

Officer 4 - Corner of Fremont Ave and Trailsway

09:30am - 5K Run starts

09:32am - 2M Walk starts

09:45am - Officers move to secondary locations after all walkers & runners pass

Officer 1 - Move to Warner Park exit at Sherman Ave

Officer 2 - Move to Warner Park exit at Northport Dr

10:00am - Begin picking up cones along 5K & 2M courses

10:15am - 5K Run Ends

10:30am - 2M Walk starts

10:30am - Aid Stations, No Parking Signs and Start/Finish Line are removed and trash picked up

10:45am - Traffic Control Officers are finished (or earlier if traffic is clear)

11:00am - All roads are opened

Additional Items

Madison Metro Buses

No Madison Metro Buses are affected by the courses

Neighbors and Businesses

A Courtesy Flyer will be delivered to the homes along the routes. The flyer will give notification of the event times and will have contact information for Starting Line Events and the Pancreatic Cancer Action Network.

Start & Finish Line	Warner Park
Course Set-Up	5:30 am
Race Begins	9:30 am
Race Ends	10:30 am
Course Tear-Down	10:00 am
Courses	5K Run, 2M Walk
Run Event Produced By	Starting Line Events, LLC
Main Event Organizer	Pancreatic Cancer Action Network
Permits & Insurance	Pancreatic Cancer Action Network
Race Director	Jerry Kempfer 608-241-7093
Event Coordinator	Lynn Fry
Course Management	Starting Line Events, LLC

Safety Plan

Ambulance and EMT's

Ryan Bros. Ambulance will have one ambulance dedicated to cover the course. This unit will be located inside Warner Park and will respond if needed. We will also have volunteer Nurses equipped with 2-way radios, at the Aid Station, to monitor the participants. 911 will be used for any life-threatening emergencies.

Trained Personnel

Every Staff Member of Starting Line Events, LLC is certified in Adult & Infant First Aid/CPR/AED through the American Red Cross. There will be a minimum of 4 certified Staff Members throughout the course at all times.

Bike teams

We will have a bicycle team dedicated to covering the 5K course. This unit will be equipped with a 2-way radio and will be roaming and responding as needed.

Aid Stations

The Aid Stations will be supplied with water and/or sports drinks. A licensed Nurse will also be equipped with a complete first aid kit and a 2-way radio to contact the Race Director or 911 for further assistance if needed.

Aid Station & Portable Bathroom Locations

- Start/Finish Line in Warner Park parking lot - Portable Bathrooms will be placed near start/finish area
- Sheridan Dr where the bike path enters Warner Park - 2 Portable Bathrooms will be placed here

Start/Finish Line Medical Help

The start/finish line medical area will be equipped with water, sports drink, food and standard portable medical kits for sprains, cuts etc. A Ryan Bros. Ambulance will be stationed near the finish line for any potential transports. 911 will be used for any life-threatening emergencies.

Emergency Procedures

Our Emergency Procedure Document is distributed to all necessary personnel. The document has a list of names and numbers to contact for different types of emergencies (weather, fire, injury, etc.). The Race Director, Aid Station Personnel, Bicycle Safety Teams and Various Volunteers have access to the Emergency Procedure Document.

Weather Emergencies

We have a detailed Weather and Emergency Policy/Plan on our website in case of inclement weather before the start of the race. We continue monitoring the weather via iPads and cell phones during the race. We use social media to warn participants of any conditions that may affect the event prior to their arrival. We use a Colored Flag Warning System for all course dangers, including weather. There will be a flag system at each Aid Station along the course and at the Start/Finish Line. The Race Director will contact the Aid Station Personnel if the color changes. The following describes each flag color.

Green Flag - Good Conditions. Everything Is Normal.

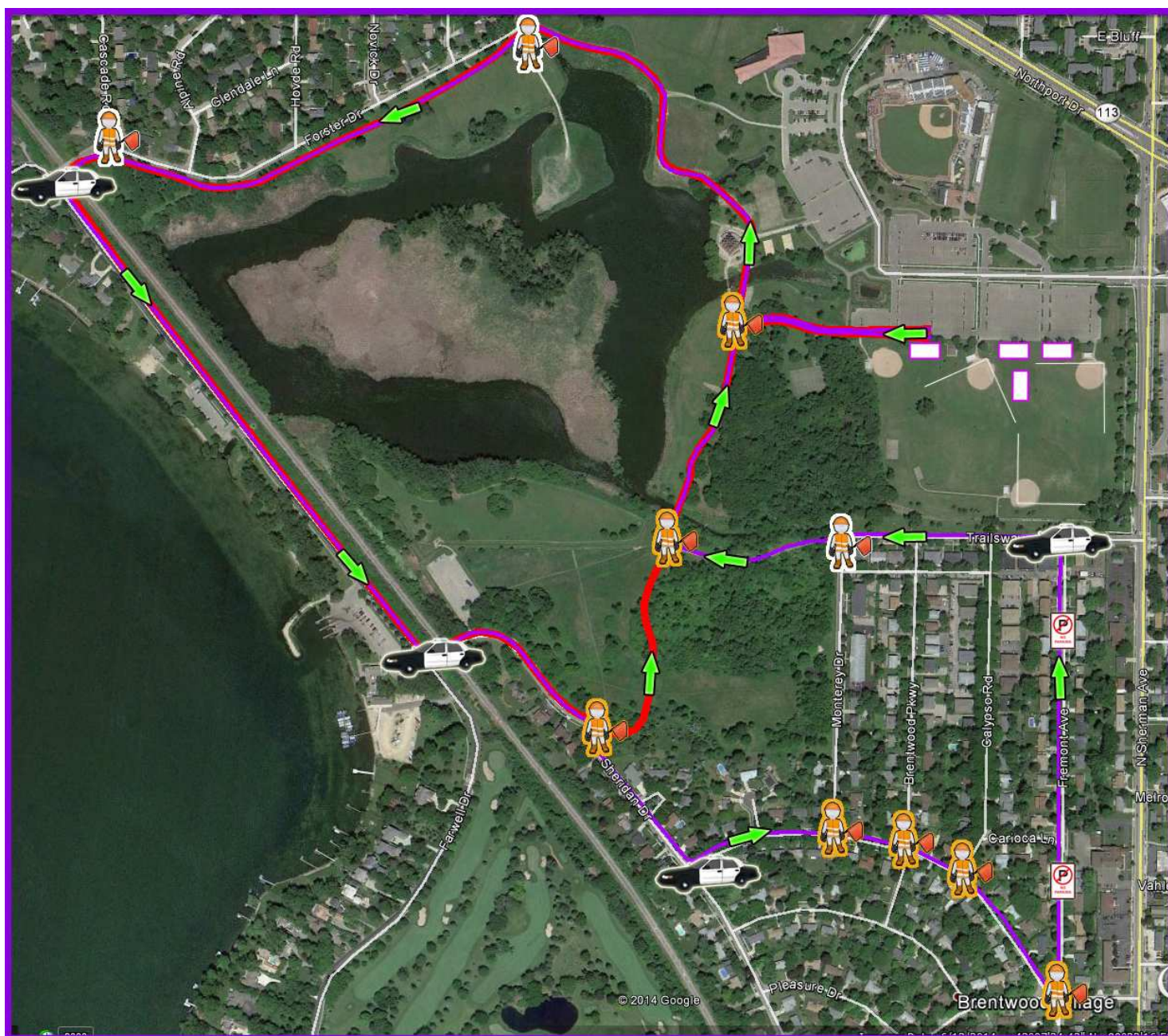
Yellow Flag - Caution. Increased Risk of Heat Related Problems. Runners Should Hydrate Accordingly.

Red Flag - Extreme Heat Risk. Clock Has Stopped. Hydrate and Walk To The Finish Line.

Black Flag - Extreme Emergency. The Race Is Canceled. Seek Shelter Immediately!

Combined Course Maps

-  5K Run Course
-  2 Mile Walk



Please email info@startinglineevents.com to request a full-color version of this plan and one will be emailed to you immediately.