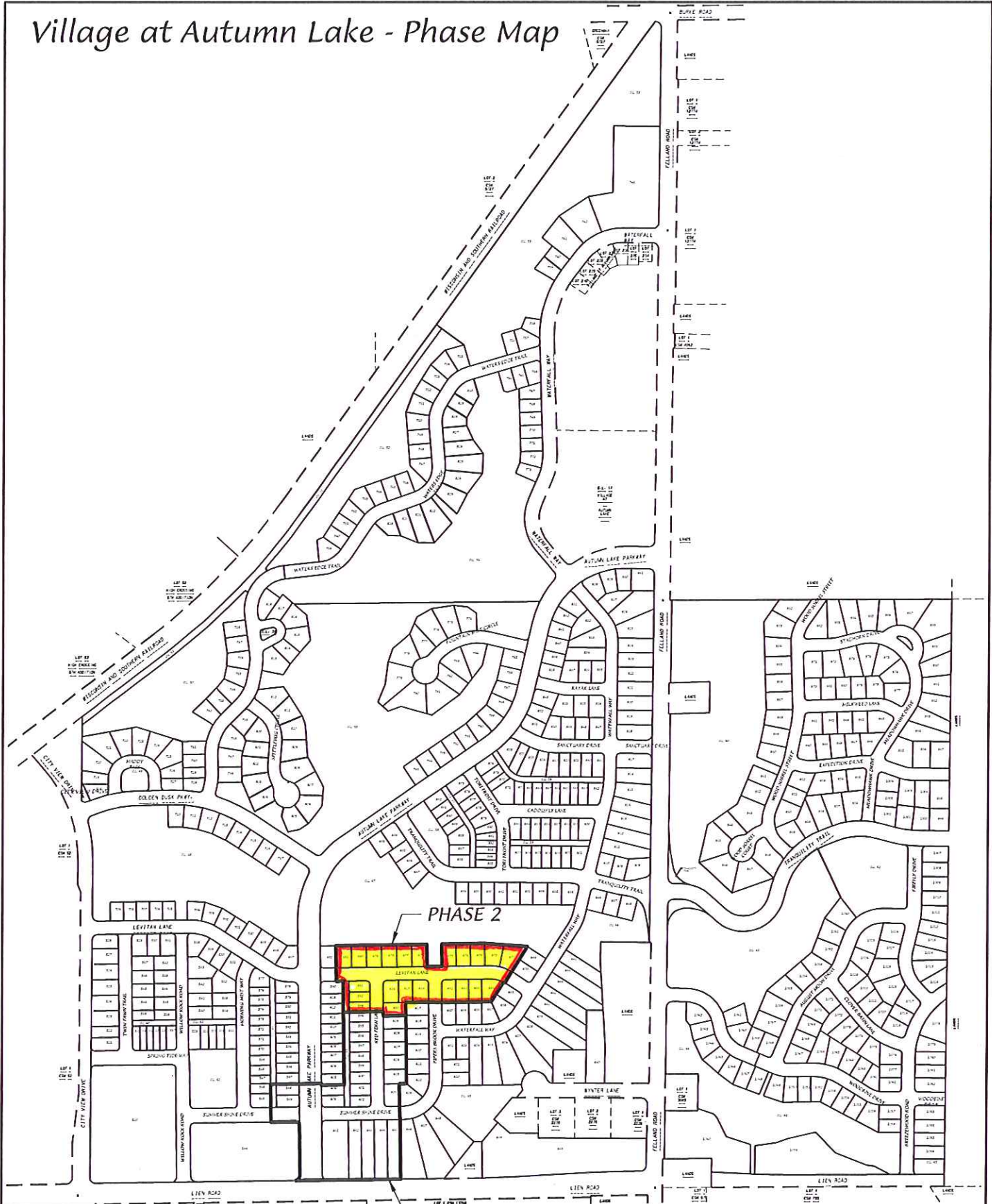
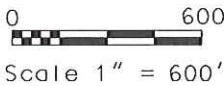


# Village at Autumn Lake - Phase Map



**D'ONOFRIO KOTTKE AND ASSOCIATES, INC.**

7530 Westward Way, Madison, WI 53717  
 Phone: 608.833.7530 • Fax: 608.833.1059  
**YOUR NATURAL RESOURCE FOR LAND DEVELOPMENT**



DATE: 12-04-15

F.N.: 14-05-165

REV.

DRAWN BY: JMS

U:/USER/1407117/DRAWINGS/PHASE MAP.DWG