



City Education Committee

October 22, 2015

Strategic Framework

Every school will be a **thriving school**
that prepares every student
to graduate from high school
college, career, and community ready.



Strategic Framework

Excellence with Equity

- School Improvement Plans
- Common Professional Learning
- Five Priority Areas



MADISON METROPOLITAN SCHOOL DISTRICT



Excellence with Equity

We must hold all children and all adults to **high expectations** and provide the unique support they need to meet and exceed that high bar.

With high expectations and strategic support, our students will rise to the challenge of college, career and community readiness.

MADISON METROPOLITAN SCHOOL DISTRICT



Moving the Needle

Sustainable improvement is a journey, but we are moving the needle on key metrics in our schools



MADISON METROPOLITAN SCHOOL DISTRICT



10 percentage point gains in literacy and math in elementary schools

Student growth in literacy and math **far above the national average** on almost every measure

Specific Student groups starting to see positive results.
English Language Learners saw improvement on almost every metric.

MADISON METROPOLITAN SCHOOL DISTRICT



Graduation rates going up for almost every student group, with pockets of accelerated results. **Four year graduation rate for African American students at La Follette increased to 75%.**

ACT participation 25% above the national average with ACT scores above the national average.

MADISON METROPOLITAN SCHOOL DISTRICT



Reclaimed 1900 days of lost instruction, 1200 for African American students while still receiving high marks on safety

MADISON METROPOLITAN SCHOOL DISTRICT



Call to Action

Fully support our youth by organizing our support around them

- Youth leadership
- Mentoring and tutoring
- Services and supports to high-needs neighborhoods

mmsd.org/action



MADISON METROPOLITAN SCHOOL DISTRICT



Call to Action and the Education Committee

Education Committee Charge: To bring forth ways in which local governmental bodies can collaborate to improve the educational experience and outcomes for all MMSD students.

Recommendation: Focus on 2 projects that require City, County and MMSD collaboration to be successful:

- Madison Community Schools
- Madison Out of School Time

MADISON METROPOLITAN SCHOOL DISTRICT



What is a Community School?

A welcoming and inclusive place that serves the identified needs of the students and community through strategic partnerships.

Community Schools connect students, and their families, to the services and support they need in order to advance instruction.



Community Schools are a way of working, a strategy for effectively organizing resources on behalf of students.

MADISON METROPOLITAN SCHOOL DISTRICT

What does a Community School look like?

Every Community School looks a bit different because each school is designed based on the needs of the students, their families and the available community resources.

However, successful community schools are anchored in a few commonly shared values:

- **Strong core instruction** for students
- **Expanded learning opportunities** for students and their families
- **Robust engagement** of youth, families and community members
- **Range of services** to support a student's well being and to remove barriers to learning
- **Continuous improvement** using school and student data to adjust to the needs of students

MADISON METROPOLITAN SCHOOL DISTRICT

How is a Community School different from any other school?

Community Schools often have similar structures:

- **Key Community Partner**
Trusted community partner, with proven results, with whom the school shares leadership and decision making authority
- **Community School Committee**
Parents, community members, and the principal who define the needs of the school, identify opportunities and resources, and work with the School Based Leadership Team (SBLT) on instructional content and school/climate culture
- **Full-time Resource Coordinator**
SBLT and Advisory Board Member who works with the school principal to program the school during and after the school day, organize the support services and opportunities available for students and families, and plan for Advisory Board meetings
- **Data Evaluation Plan**
Ensure data based decision making, continuous improvement and community accountability

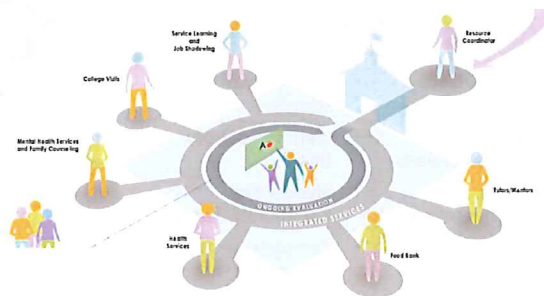
MADISON METROPOLITAN SCHOOL DISTRICT

What are the typical services and who provides them?

Community Schools have a menu of supports, provided by community partners, available to students and their families. School staff work with the Resource Coordinator to ensure students are surrounded with the support they need.

Most schools would provide:

- Tutoring/Mentoring
- After school programs
- Health care
- Mental Health
- Food Bank
- Parent Academy (variety of learning opportunities)
- Job training/ vocational education
- More as needed...



MADISON METROPOLITAN SCHOOL DISTRICT

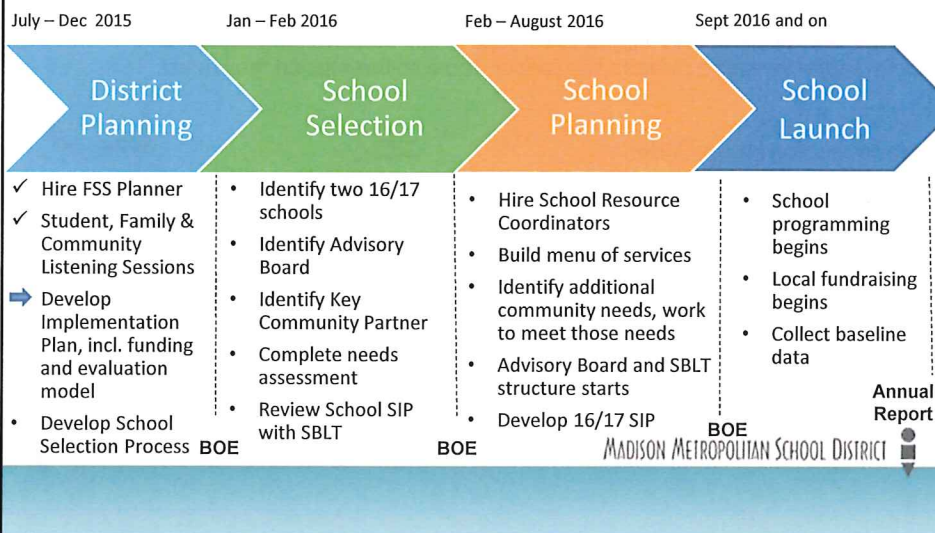
What can we expect from Community Schools?

Community schools across the nation are seeing results in achievement, attendance, graduation, parental involvement, health and more. Visit <http://www.communityschools.org/results/>

- Students in Tulsa, OK outperformed students in non-community schools by 32 points in **math** and 19 points in **reading**
- In Oakland, **tardiness, truancy, and suspensions** have plummeted
- In Cincinnati, OH:
 - Family and community member survey data states that they **feel empowered** to have a say in how their school is run
 - **Graduation rate in racial achievement gap decreased** from a 14.5% difference in 2003 to 2.3% in 2013

MADISON METROPOLITAN SCHOOL DISTRICT

Community School Timeline



Madison Out-of-School Time

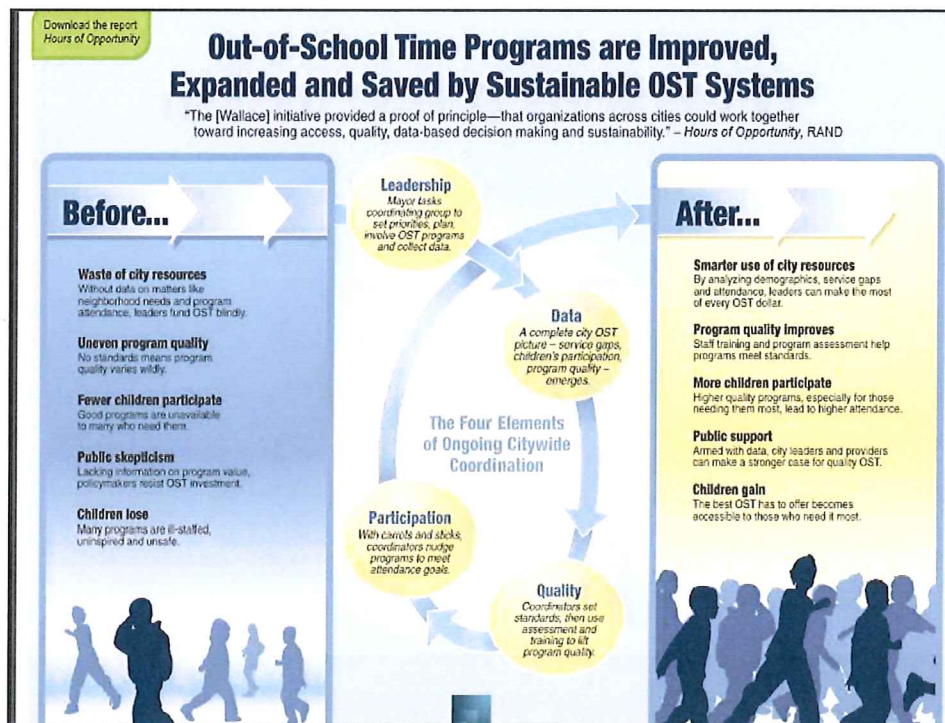
Vision: The Madison Out-of-School Time (MOST) initiative will ensure that all of Madison's children and youth have access to comprehensive, high-quality, out-of-school time programs that support positive youth development, educational achievement, and readiness for college, career and community.



IN METROPOLITAN SCHOOL DISTRICT

Out-of-School Time Programs are Improved, Expanded and Saved by Sustainable OST Systems

"The [Wallace] initiative provided a proof of principle—that organizations across cities could work together toward increasing access, quality, data-based decision making and sustainability." – *Hours of Opportunity*, RAND



MOST Timeline 2014-2018

2014-2015

Complete OST programs and activities report
 Determine MOST's initial focus
 Develop quality standards and identify assessment tools
 Complete planning for program locator
 Explore and examine MIS models and data sharing agreements
 Revise logic model

2015-2016

Build and launch program locator
 Launch program locator marketing campaign
 Select program quality assessment tool for elementary
 Develop quality improvement and support plan (professional development and/or coaching)
 Finalize MIS model, build/purchase
 Develop MIS data sharing agreement
 Develop recommendations for reducing barriers to OST access
 Develop evaluation plan
 Seek external funding and sponsorship

2017-2018

Pilot, evaluate, adapt MIS
 Pilot quality improvement and support structures
 Continue evaluation
 Seek external funding and sponsorship

MADISON METROPOLITAN SCHOOL DISTRICT



Questions & Discussion



IN METROPOLITAN SCHOOL DISTRICT

