

# MMB Renovation Schematic Design Presentation

20 October 2015

MADISON MUNICIPAL BUILDING

MSR

# a building in need



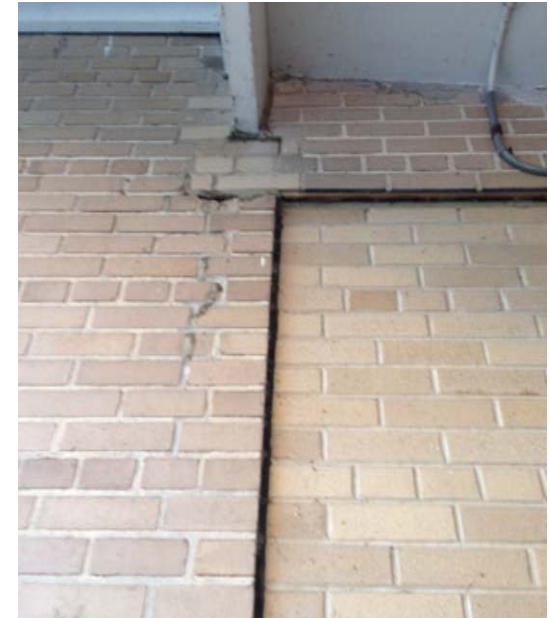
water infiltration



systems at end of life



deteriorating  
mortar  
joints / mold

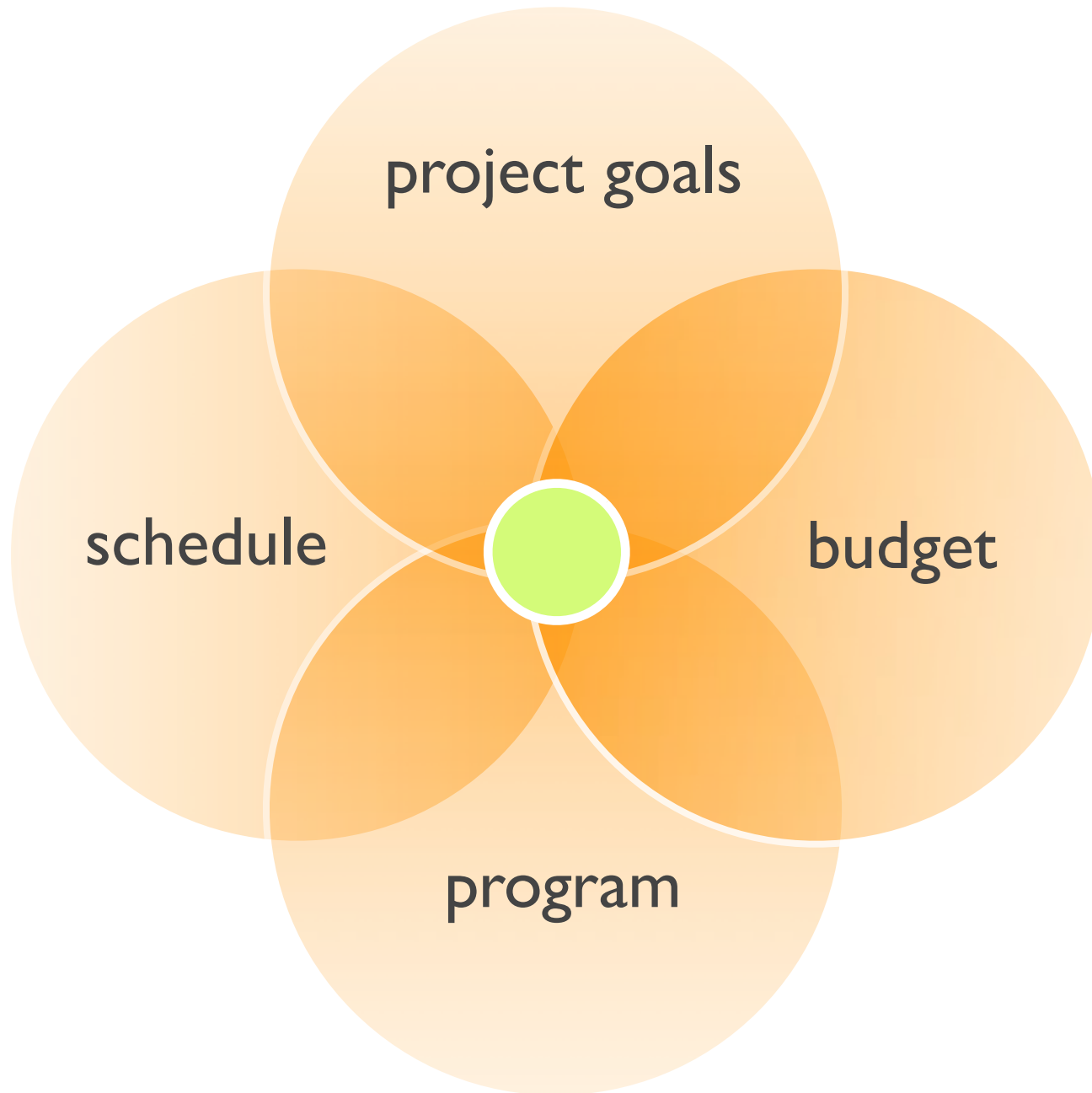


“rust jacking”



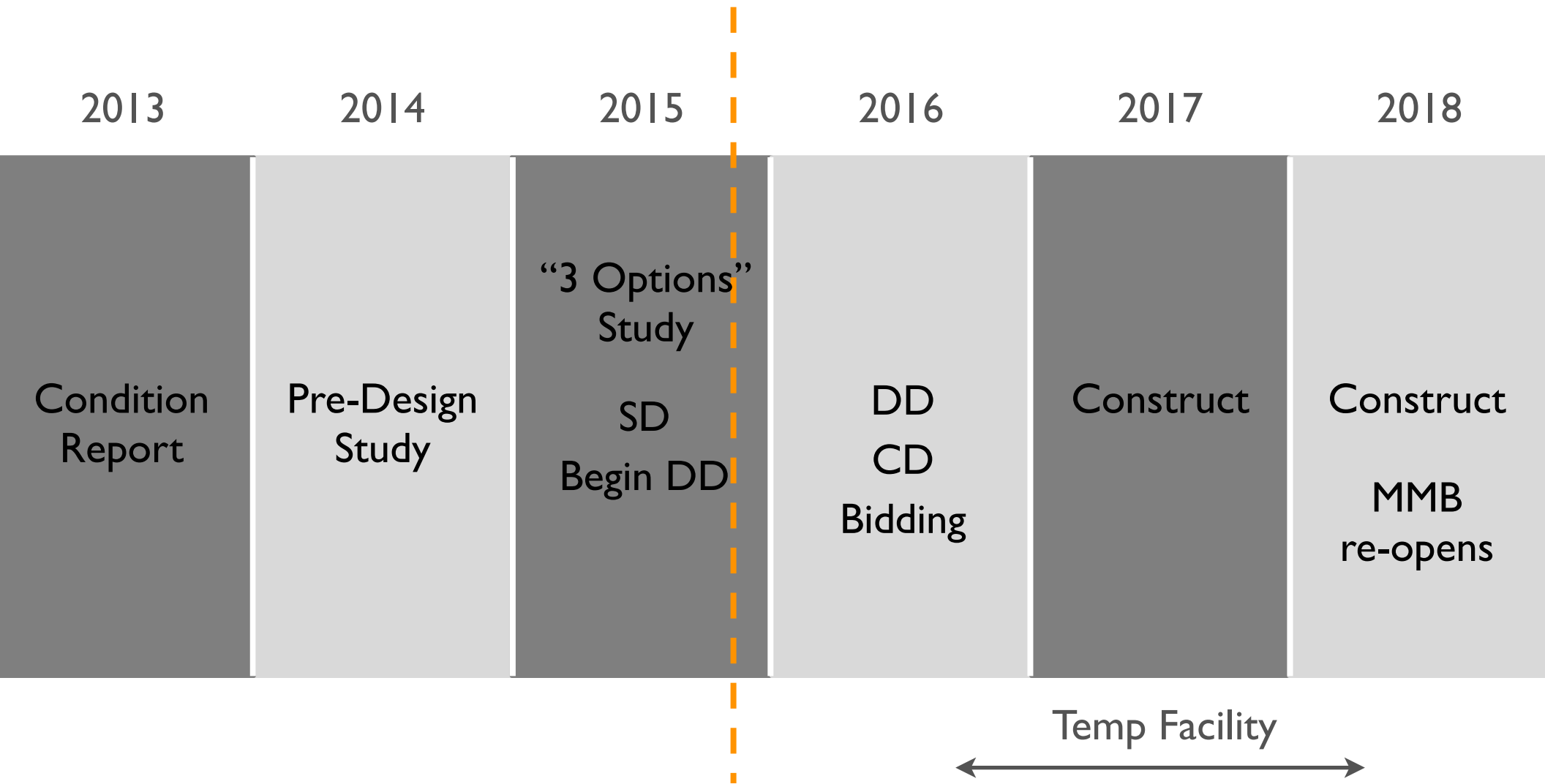
a building in need







# project schedule



# Schematic Design Goals



restore historic qualities





restore historic qualities



restore historic qualities





overhaul all building systems



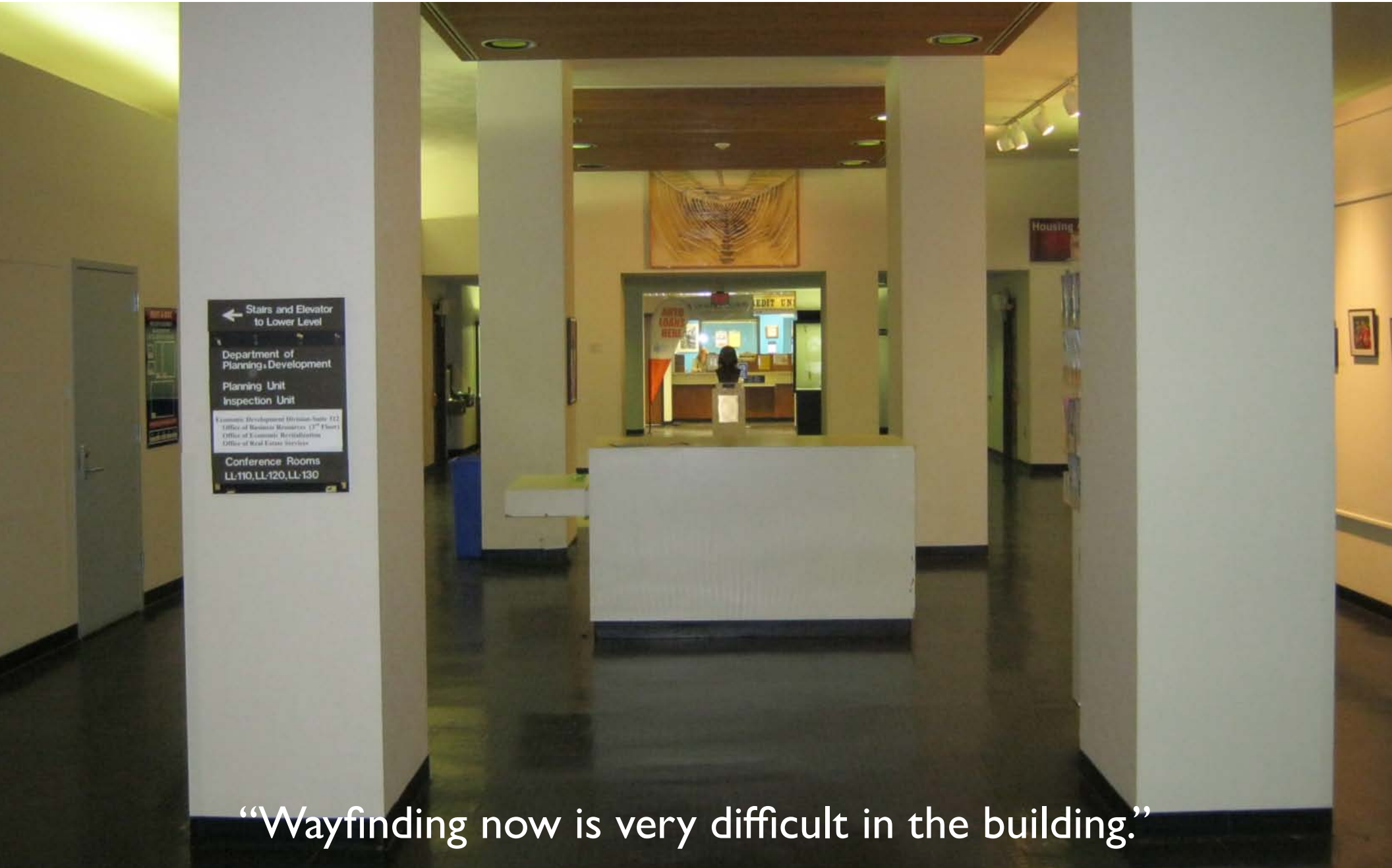


# improve meeting space



“...way too much time is wasted just searching for a place to meet.”

# improve customer experience



“Wayfinding now is very difficult in the building.”



support civic engagement



“You can’t even hear what’s being said half the time...the room discourages civic discourse.”



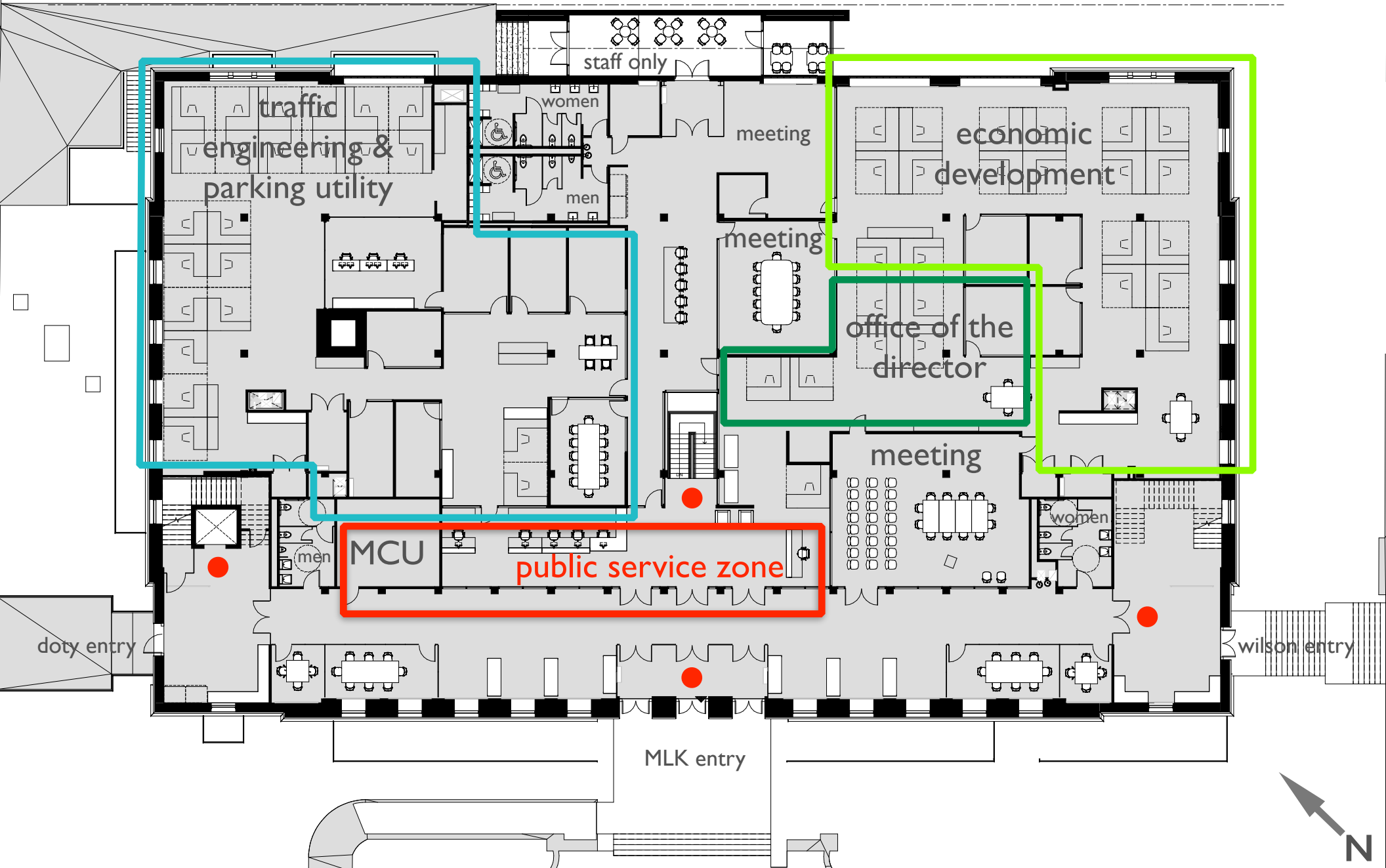
improve staff working conditions



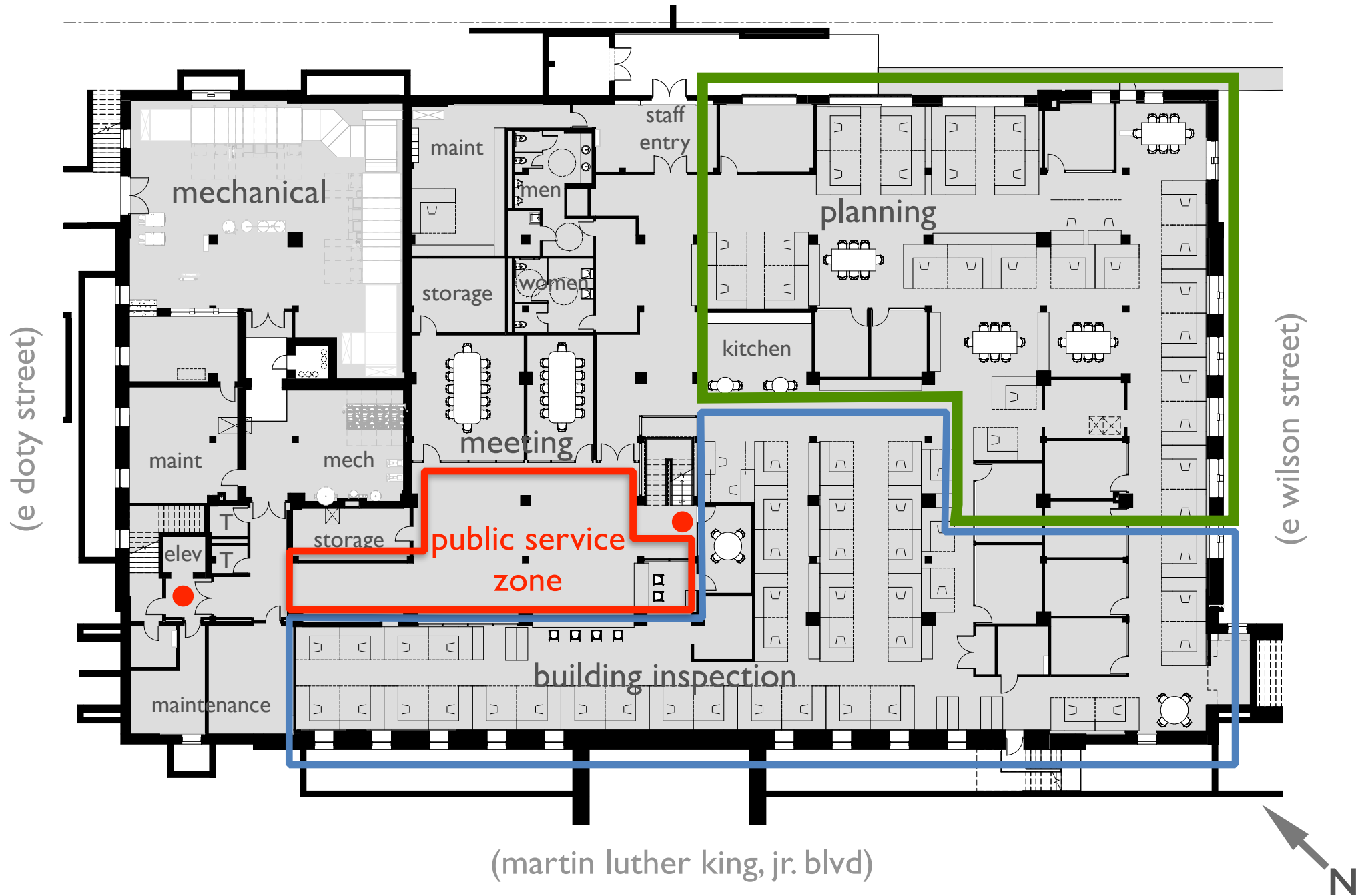
“...employees...seem to be stuck with inadequate work space.”



# first floor

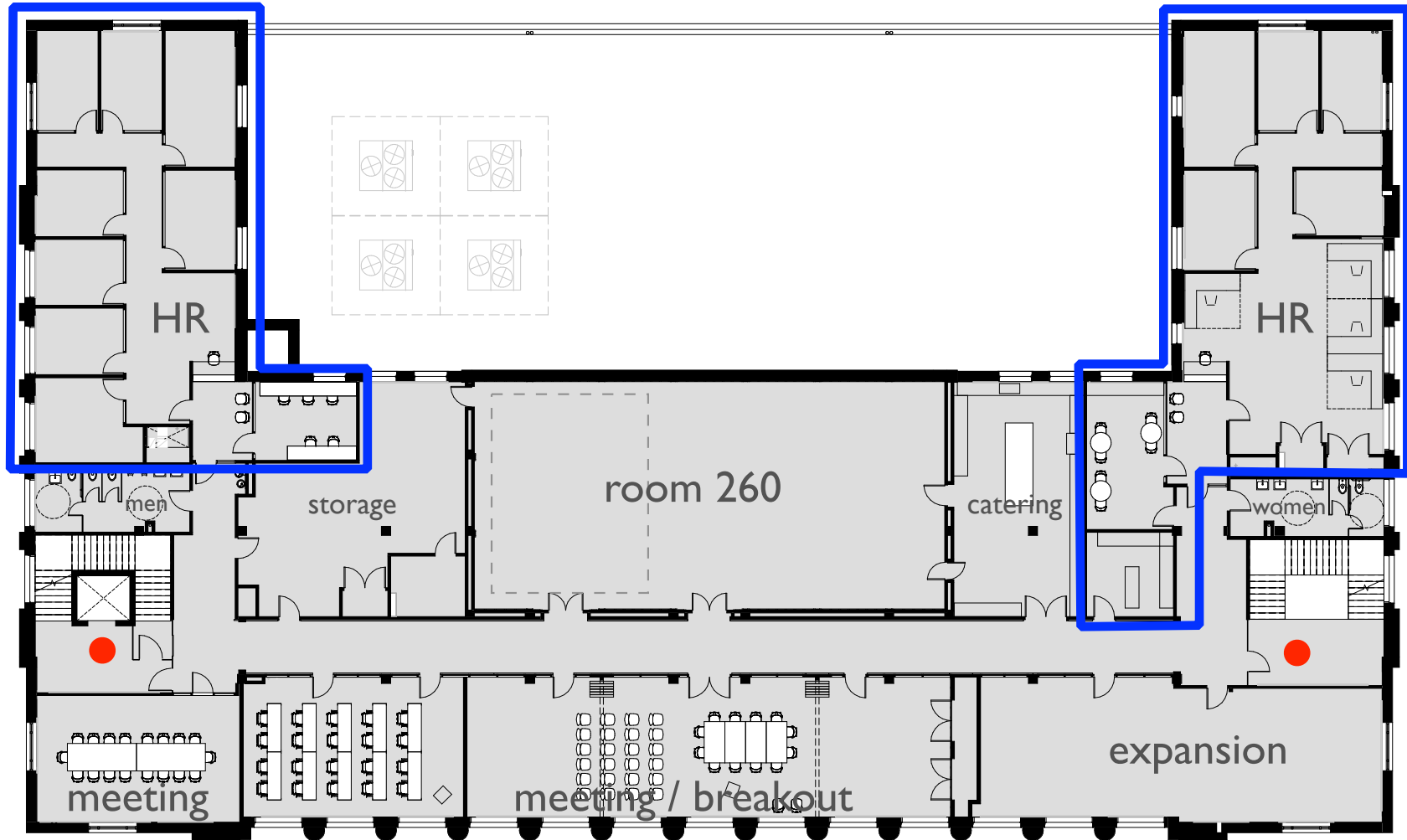


# ground floor

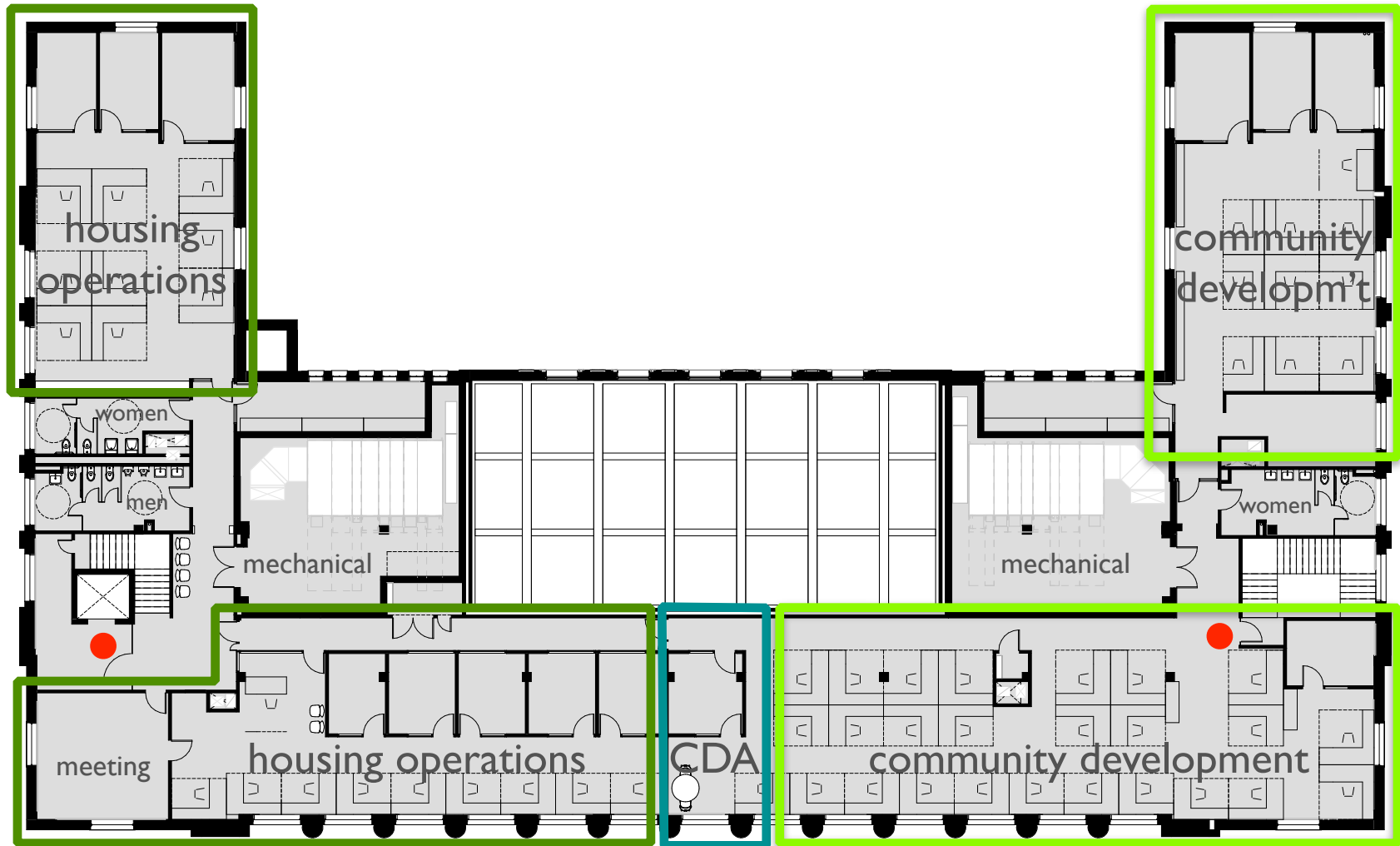




# second floor

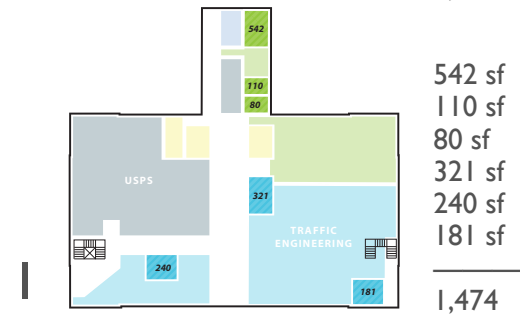
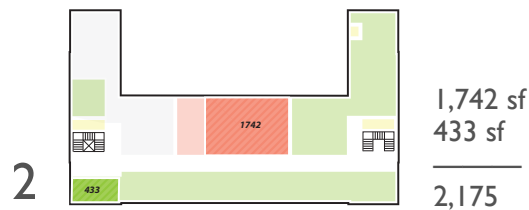
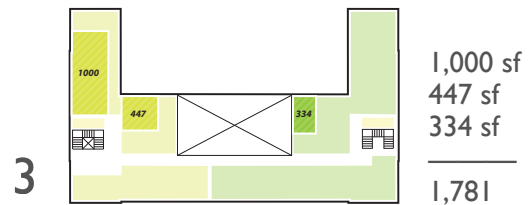


# third floor

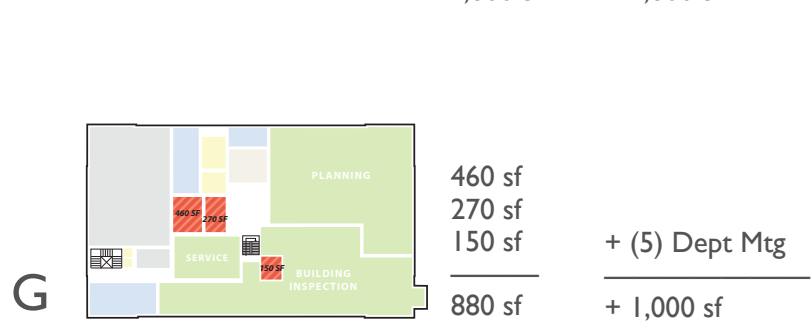
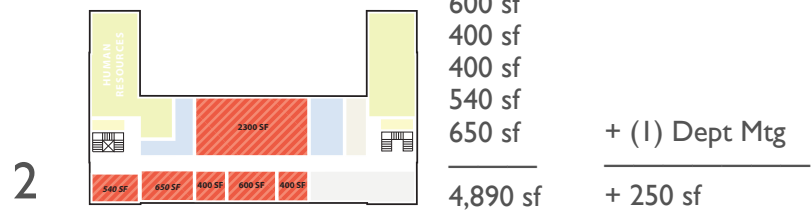
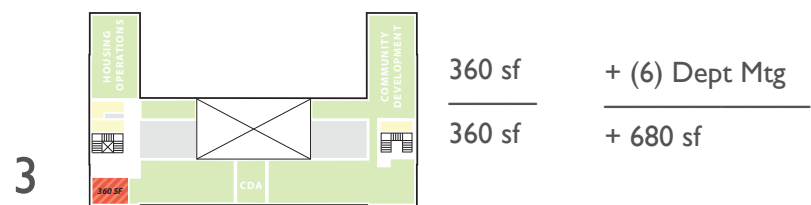


# meeting spaces summary

Existing: 18 spaces ~7,490 sf



Proposed: 33 spaces ~11,260 sf





# meeting spaces summary

Available today: 18 rooms @ 7,490 sf

Available to public: 7 rooms @ 4,795 sf

Proposed: 33 rooms @ 11,260 sf

Available to public: 15 rooms @ 7,730 sf

# staff spaces summary

**226 staff spaces accommodated:**

**Dept of Planning, Community & Economic  
Development: 170 spaces**

**Traffic Engineering & Parking Utility: 36 spaces**

**Human Resources: 20 spaces**



This architectural site plan illustrates the proposed sustainable features for the City of Sister City building. The plan includes the following elements:

- Green Roofs:** Two large areas labeled "potential green roof" are situated on the upper levels of the building.
- Photovoltaic Arrays:** Two rectangular areas labeled "photovoltaic array" are located on the lower levels of the building.
- Bike Parking:** Three designated bike parking areas are shown, each with a bicycle icon and a count:
  - Top right: 24 bikes
  - Bottom left: 20 bikes
  - Bottom right: 17 bikes
- Other Features:**
  - An "ELEVATOR PENTHOUSE" is located on the left side.
  - A "NEW ANNEX" is shown at the top center.
  - An "OUTDOOR SEATING AREA FOR CITY STAFF" is located at the top right.
  - Two "memorial tree" locations are marked with dashed circles.
  - Various utility areas like "CONDENSER", "VENT", "WH", and "RAMP" are also indicated.

The plan also shows surrounding streets with addresses (e.g., N 46°08'15" E, N 46°07'23" E, S 46°07'06" W, S 46°06'37" W, N 44°00'46" W, N 44°00'16" W) and property lines.



# exterior (current state)









bringing back daylight



bringing back daylight





bringing back daylight



# entry experience (current state)



← Stairs and Elevator  
to Lower Level

Department of  
Planning & Development  
Planning Unit  
Inspection Unit

Economic Development Division Suite 111  
Office of Business Resources (17<sup>th</sup> Floor)  
Office of Economic Revitalization  
Office of Real Estate Services

Conference Rooms  
LL-110, LL-120, LL-130



# entry experience





# customer service zone (current state)



# customer service zone





# room 260 (current state)





# room 260





