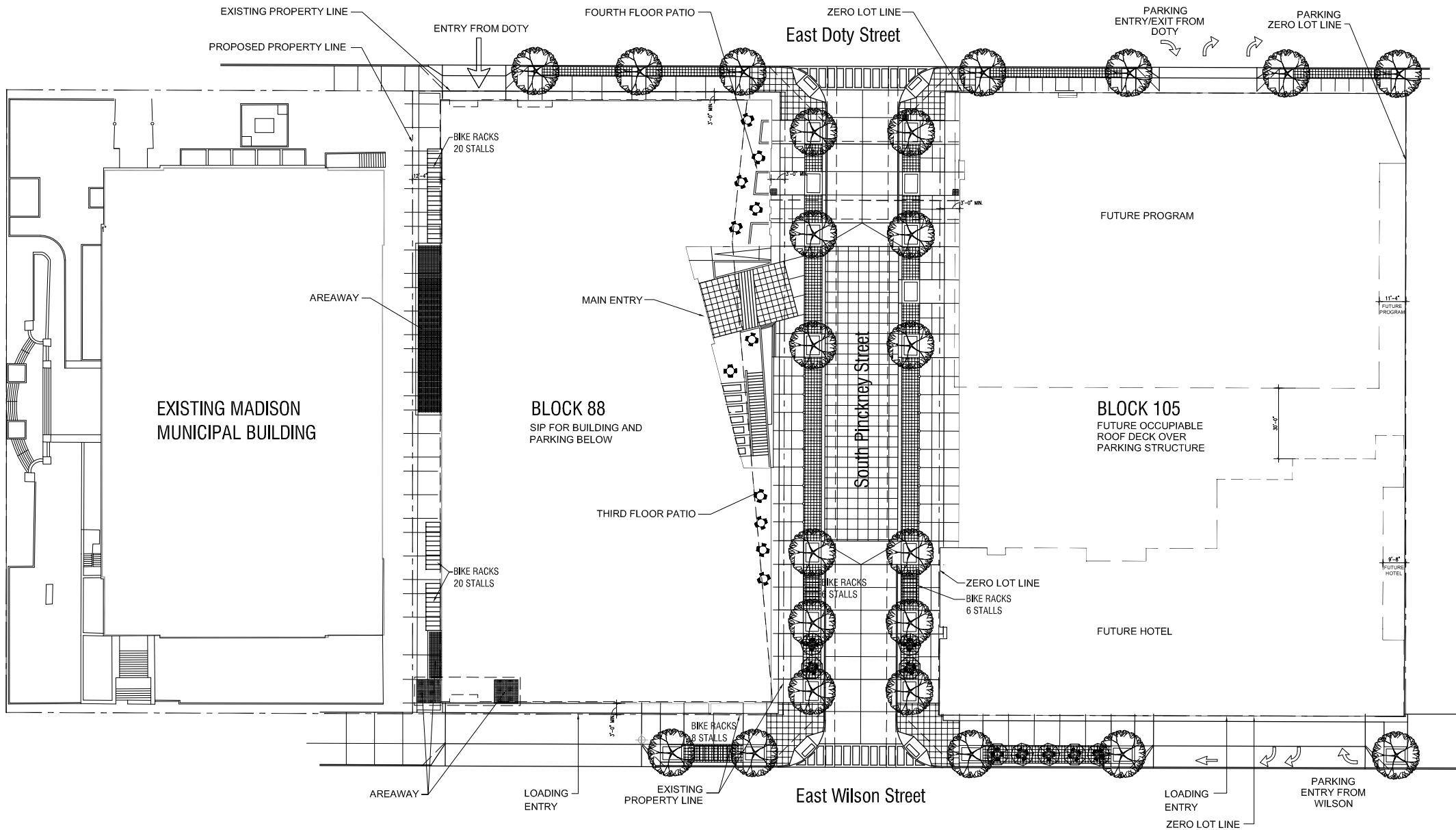


Developer:  
JDS Development, LLC

Project Manager:  
Hammes Company

Architects:  
**KMD**  
ARCHITECTS

**Potter  
Lawson**  
Success by Design



## Exact Sciences at Judge Doyle Square

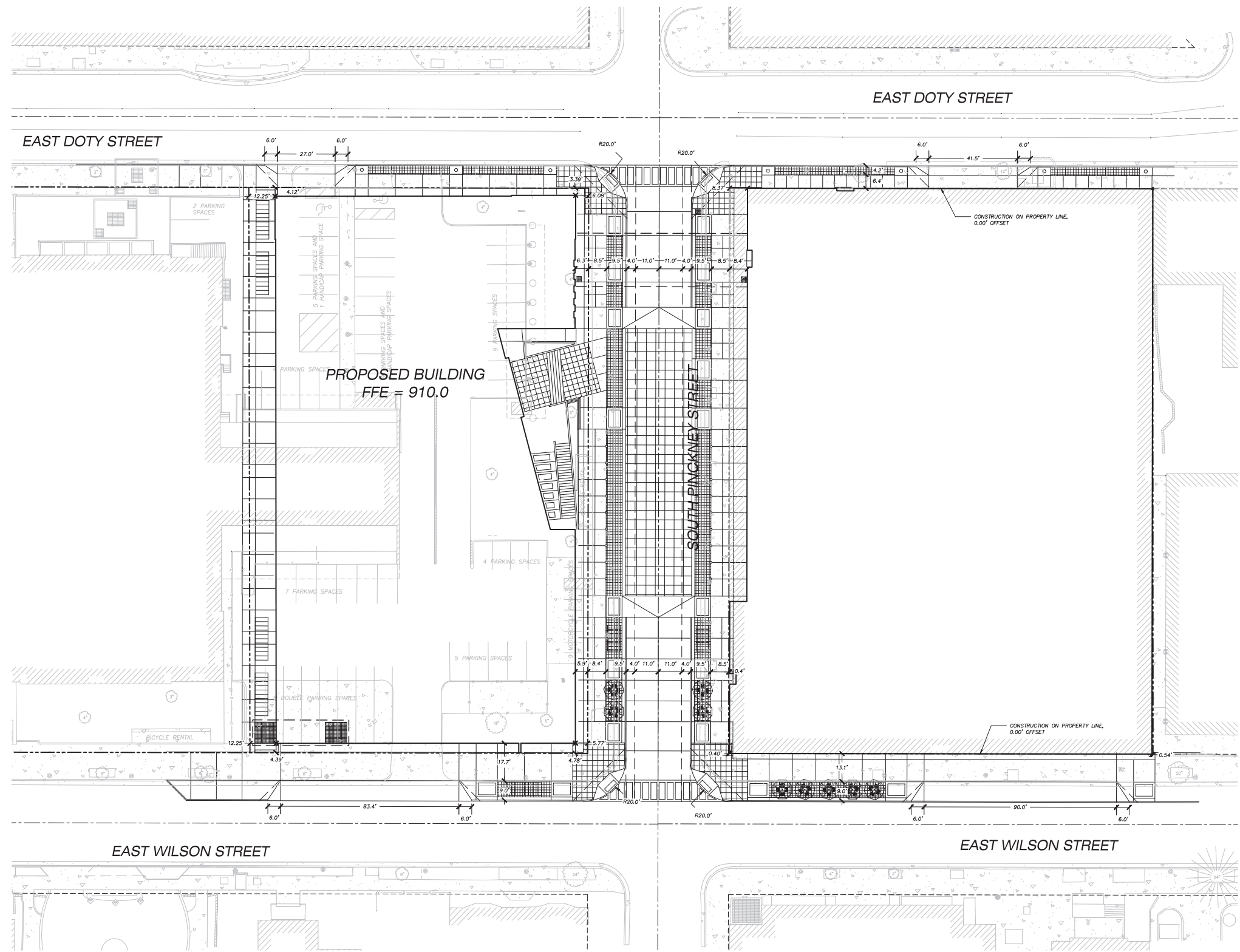
Madison, Wisconsin

Project #: 2015.17.00

Date	Issuance/Revisions	Symbol
08/21/2015	Schematic Design	

Site Development Plan

# A1.01



- LEGEND**
- PROPERTY LINE
  - BUILDING FOOTPRINT
- GENERAL NOTES**
1. REFER TO THE EXISTING CONDITIONS SURVEY BY JSD PROFESSIONAL SERVICES DATED 06-13-15 FOR EXISTING CONDITIONS NOTES AND LEGEND.
  2. ALL WORK IN THE ROW AND/OR PUBLIC EASEMENTS SHALL BE IN ACCORDANCE WITH THE CITY OF MADISON STANDARD SPECIFICATIONS FOR PUBLIC WORKS CONSTRUCTION AND PERFORMED BY A CITY LICENSED CONTRACTOR.
  3. JSD SHALL BE HELD HARMLESS AND DOES NOT WARRANT ANY DEVIATIONS BY THE OWNER/CONTRACTOR FROM THE APPROVED CONSTRUCTION PLANS THAT MAY RESULT IN DISCIPLINARY ACTIONS BY ANY OR ALL REGULATORY AGENCIES.
  4. DRAWING FOR REVIEW - NOT FOR CONSTRUCTION UNLESS OTHERWISE NOTED IN THE TITLE BLOCK.
- SITE PLAN NOTES**
1. ALL DIMENSIONS TO FACE OF CURB UNLESS OTHERWISE NOTED.
  2. ALL RADII TO FACE OF CURB UNLESS OTHERWISE NOTED.
  3. ALL PRIVATE CURB AND GUTTER SHALL BE 18" STANDARD CURB AND GUTTER. ANY REQUIRED REPLACEMENT OF PUBLIC CURB AND GUTTER SHALL MATCH EXISTING AND MEET THE REQUIREMENTS OF THE CITY OF MADISON.
  4. CONTRACTOR SHALL PROVIDE CONTROL JOINTS AND CONSTRUCTION JOINTS OF ONE-QUARTER CONCRETE THICKNESS AT AN EQUAL RATIO OF LENGTH TO WIDTH WHENEVER POSSIBLE WITH A MAXIMUM LENGTH BETWEEN JOINTS OF 8' ON CENTER.
  5. CONTRACTOR SHALL PROVIDE EXPANSION JOINTS IN SIDEWALKS AT A MAXIMUM 24' ON CENTER.
  6. EXTERIOR CONCRETE SURFACES SHALL BE BROOM FINISHED.
  7. ALL CONCRETE SURFACES TO BE SEALED WITH TYPE TK-26UV CONCRETE SEALANT.
  8. 2' x 4' TRUNCATED DOME SECTIONS SHALL BE PLACED AT ALL ADA RAMPS.

Developer:  
JDS Development, LLC

Project Manager:  
Hammes Company

Architects:  
KMD ARCHITECTS

Potter Lawson  
Success by Design

Exact Sciences at  
Judge Doyle Square

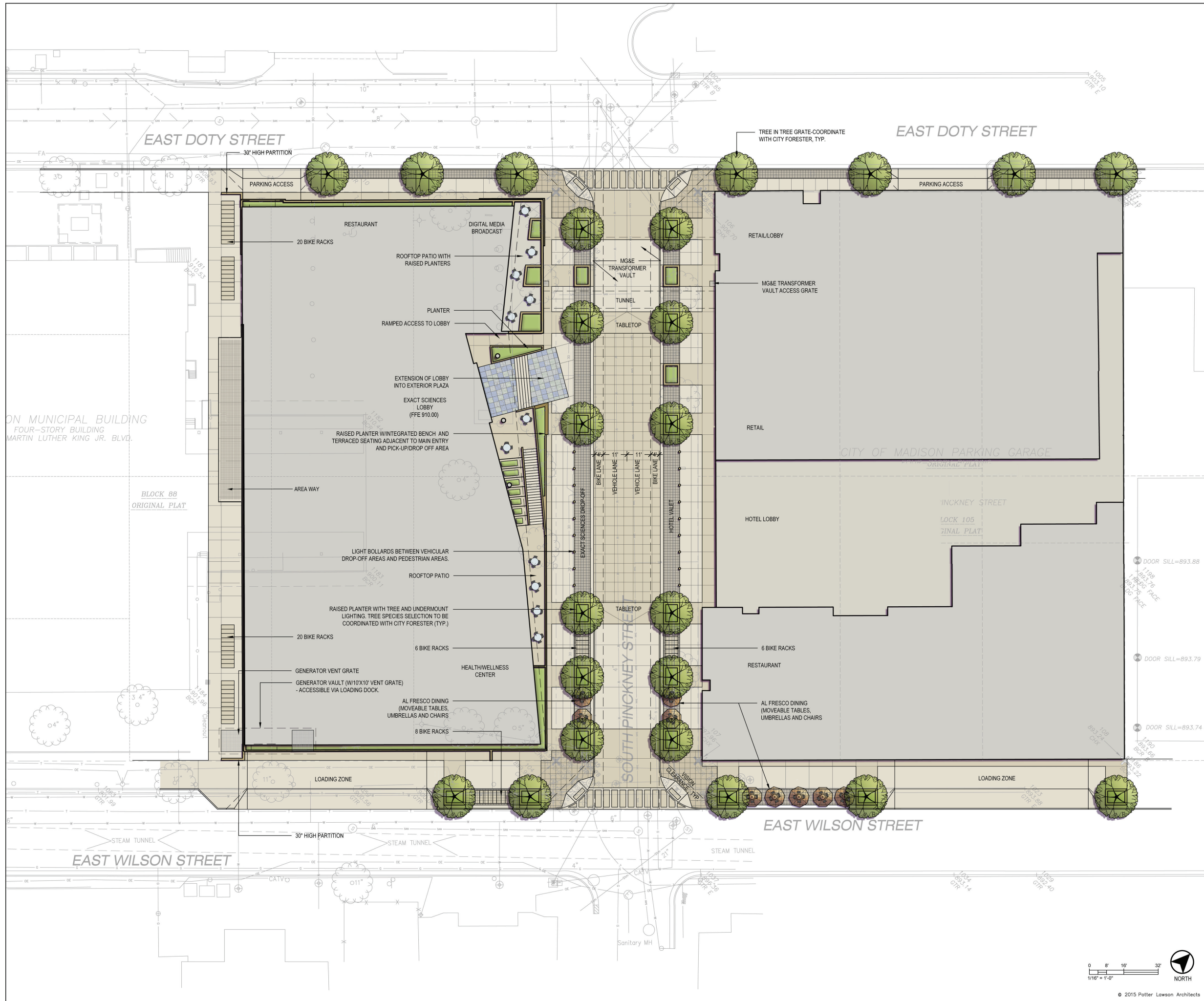
Madison, Wisconsin  
Project #: 2015.17.00

Date	Issuance/Revisions	Symbol
08/21/2015	Schematic Design	

**DIMENSIONED SITE  
PLAN**

C101





Developer:  
JDS Development, LLC

Project Manager:  
Hammes Company

Architects:  
**KMD**  
ARCHITECTS

**Potter  
Lawson**  
Success by Design

**KEN SAIKI DESIGN**  
LANDSCAPE  
ARCHITECTS  
303 S. PATERSON  
SUITE ONE  
MADISON, WI 53703  
Phone: 608 251-3600

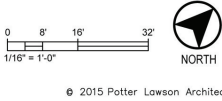
- LEGEND:**
- PAVERS ON BITUMINOUS SETTING BED TYPE 1
  - PAVERS ON BITUMINOUS SETTING BED TYPE 2
  - PAVERS ON BITUMINOUS SETTING BED TYPE 3
  - POURED-IN-PLACE CONCRETE WITH INTEGRAL COLOR
  - POURED-IN-PLACE CONCRETE WITH STANDARD PORTLAND GREY COLOR
  - PLANTING AREA
  - DECIDUOUS CANOPY TREE

**Exact Sciences at  
Judge Doyle Square**

Madison, Wisconsin  
Project #: 2015.17.00

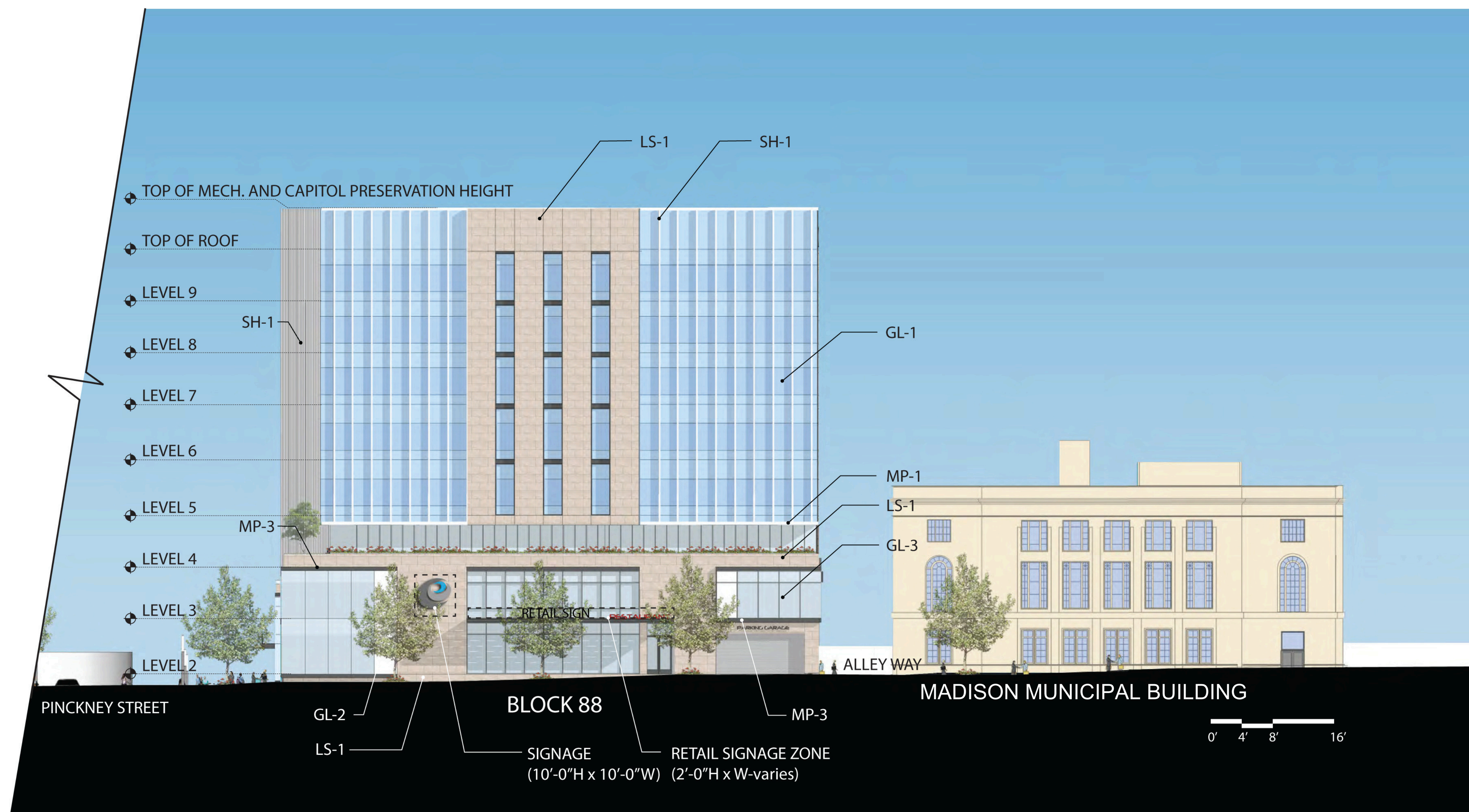
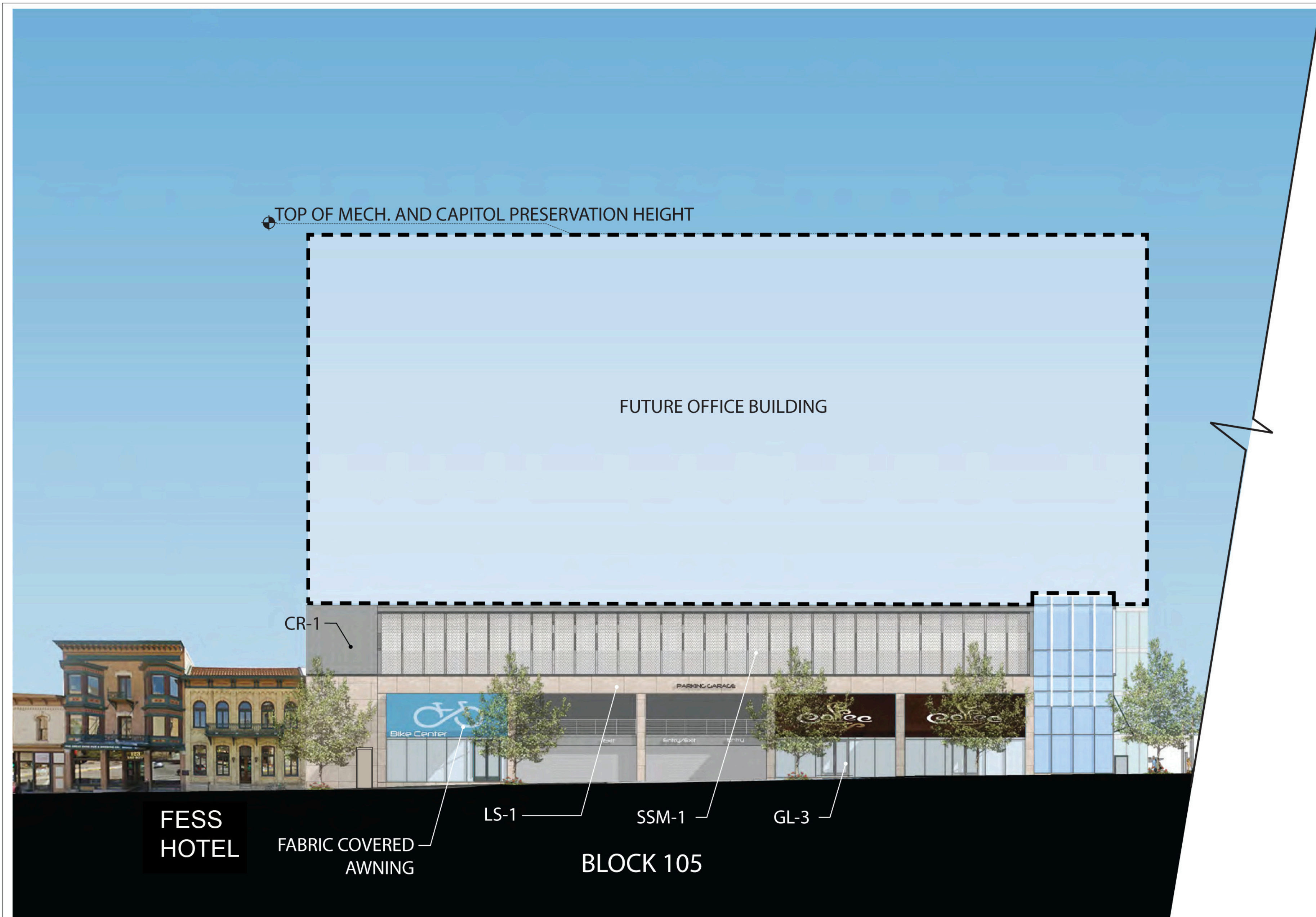
Date	Issuance/Revisions	Symbol
08/21/2015	Schematic Design	

**OVERALL SITE  
DEVELOPMENT PLAN**  
**L100**



© 2015 Potter Lawson Architects





Developer:

JDS Development, LLC

Project Manager:

Hammes Company

Architects:

**KMD**  
ARCHITECTS

**Potter  
Lawson**  
Success by Design

Exact Sciences at  
Judge Doyle Square

Madison, Wisconsin

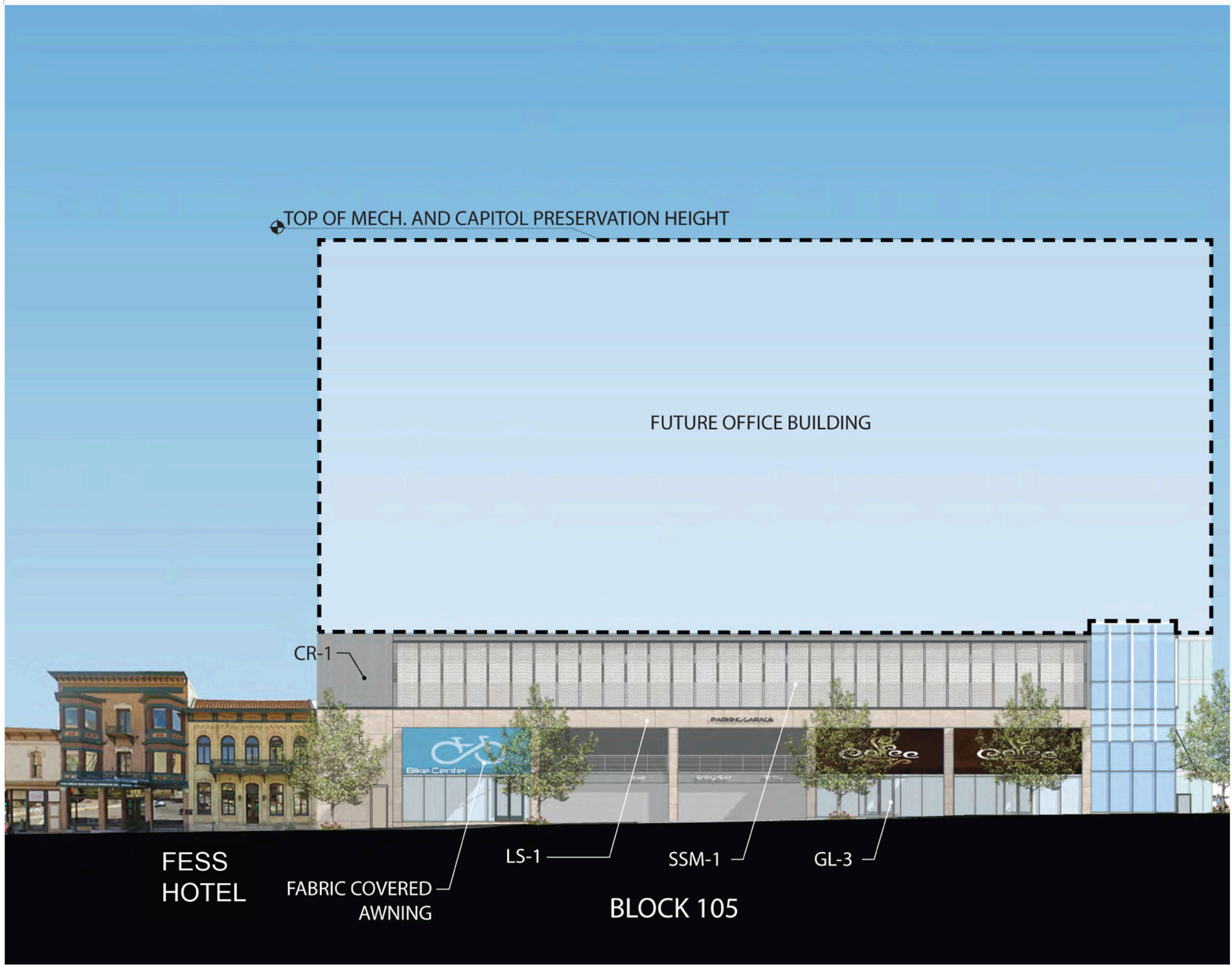
Project #: 2015.17.00

Date	Issuance/Revisions	Symbol
08/21/2015	Schematic Design	

Exterior Elevations

A5.01





Developer:  
JDS Development, LLC

Project Manager:  
Hammes Company

Architects:  
**KMD**  
ARCHITECTS

**Potter  
Lawson**  
Success by Design

Exact Sciences at  
Judge Doyle Square

Madison, Wisconsin  
Project #: 2015.17.00

Date	Issuance/Revisions	Symbol
08/21/2015	Schematic Design	

Exterior Elevations

A5.01A



JDS Development, LLC

Hammes Company

**KMD**  
ARCHITECTS

# Potter Lawson

Success by **Design**



## Exterior Elevations

## A5.02

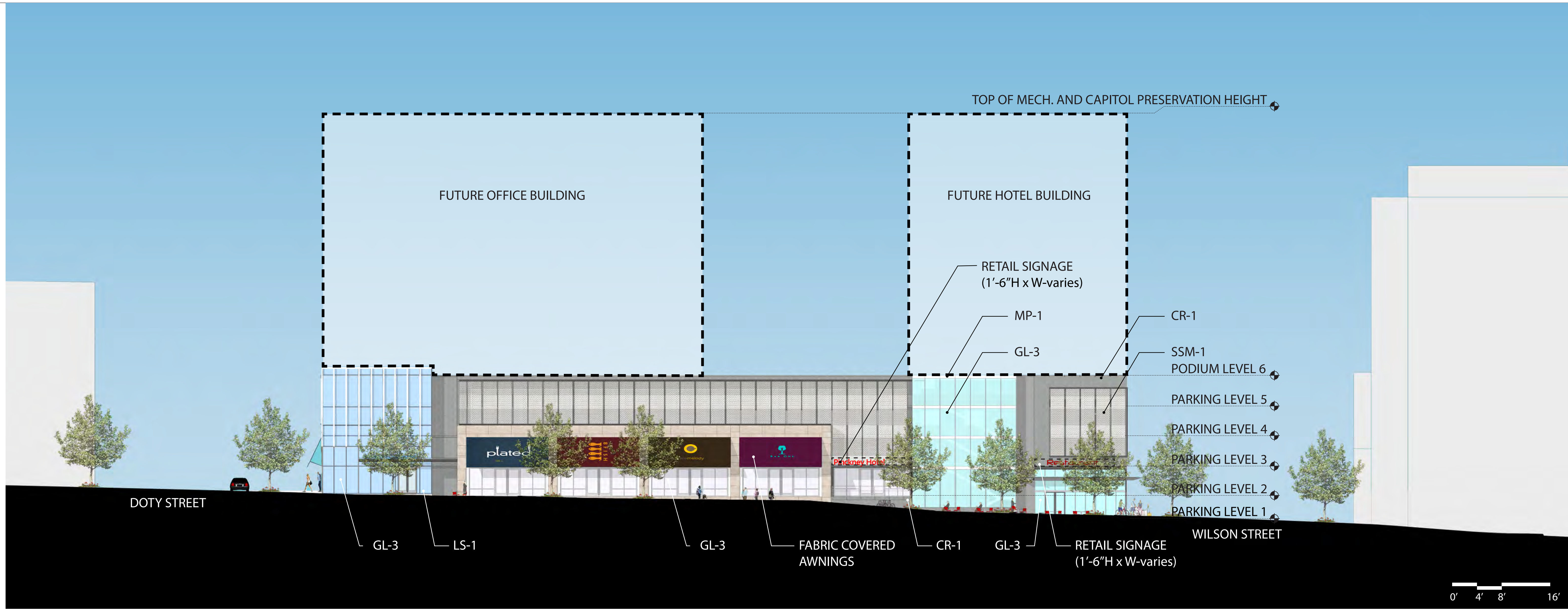


Developer:  
JDS Development, LLC

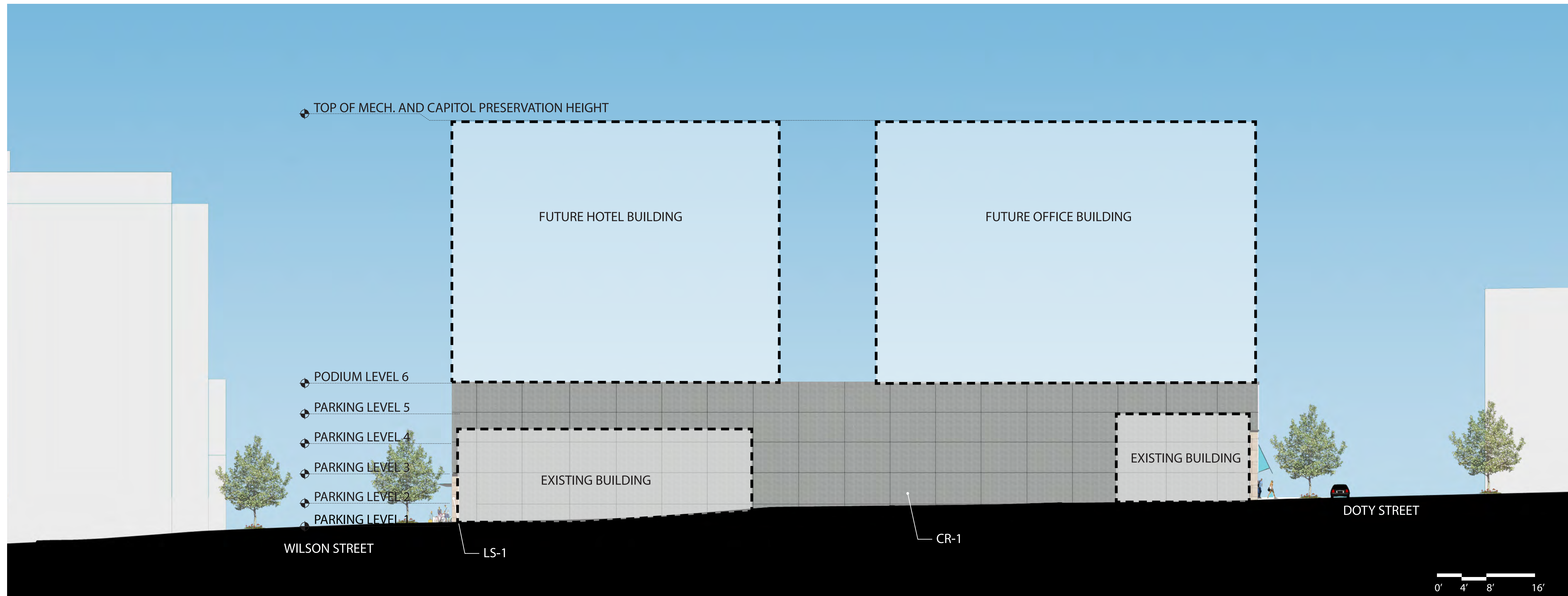
Project Manager:  
Hammes Company

Architects:  
**KMD**  
ARCHITECTS

**Potter  
Lawson**  
Success by Design



1 South-West/ Pinckney Elevation- Block 105  
A5.03 1/8" = 1'-0"



2 North-East/ Property Line Elevation- Block 105  
A5.03 1/8" = 1'-0"

Exact Sciences at  
Judge Doyle Square

Madison, Wisconsin

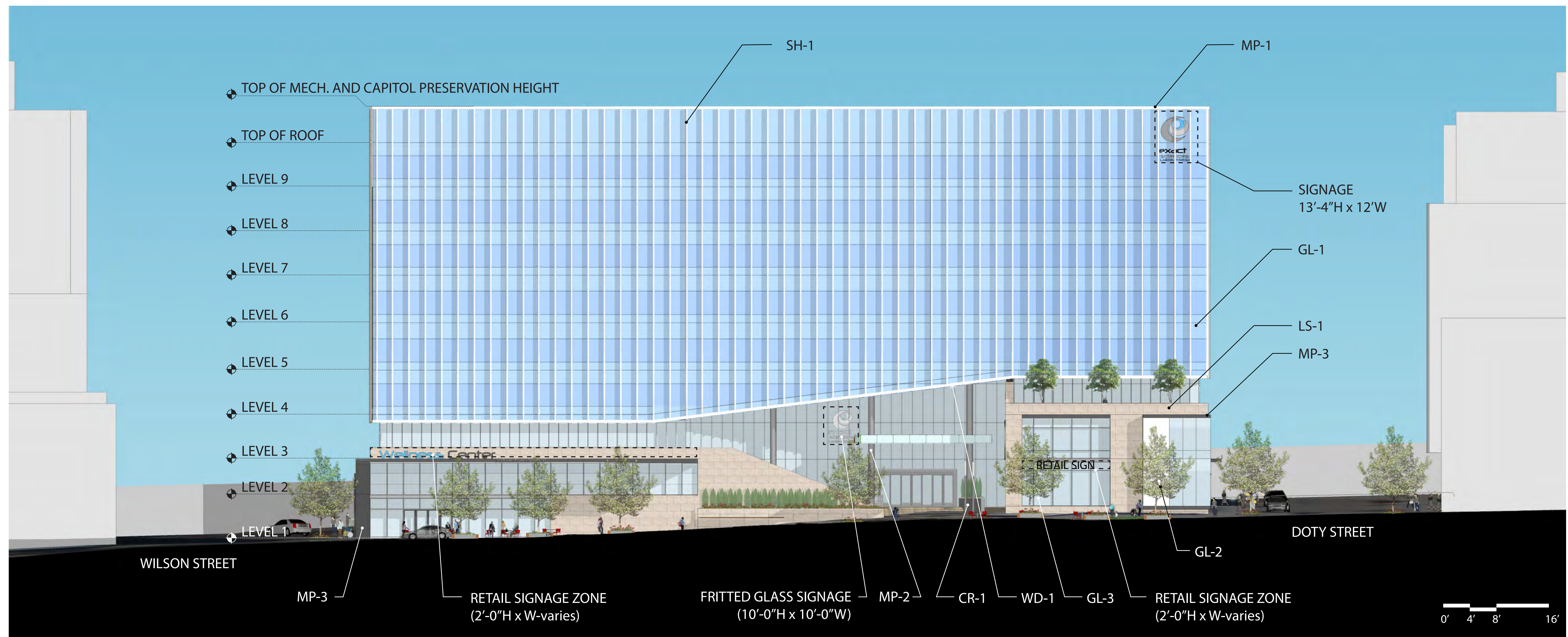
Project #: 2015.17.00

Date	Issuance/Revisions	Symbol
08/21/2015	Schematic Design	

Exterior Elevations

A5.03

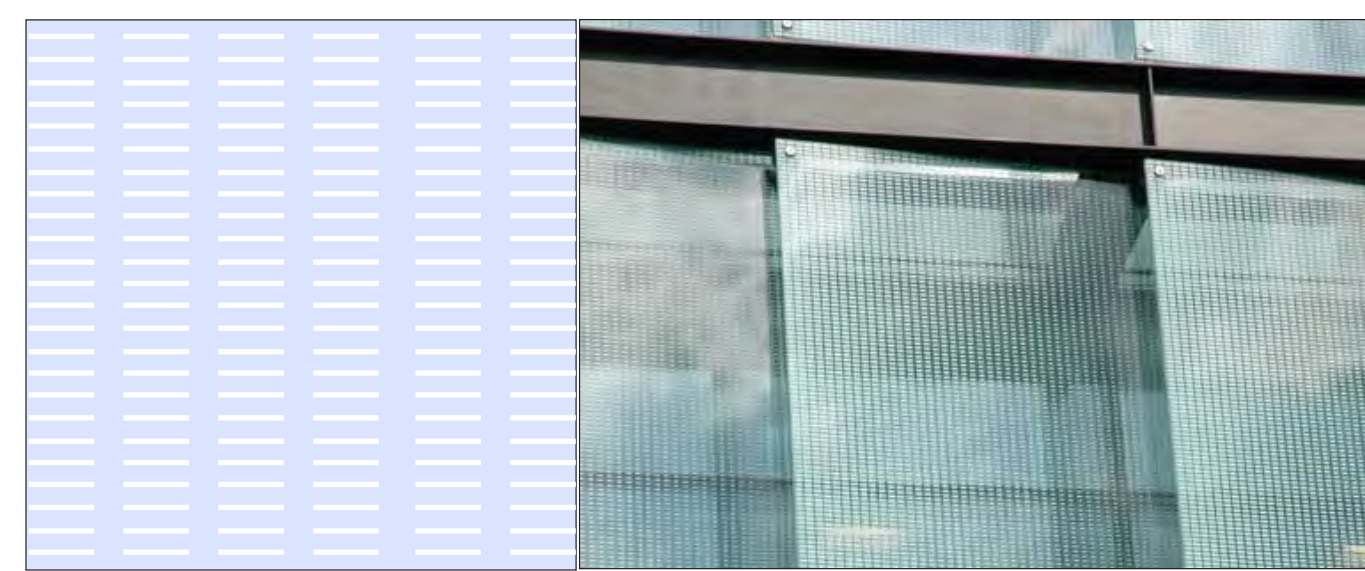




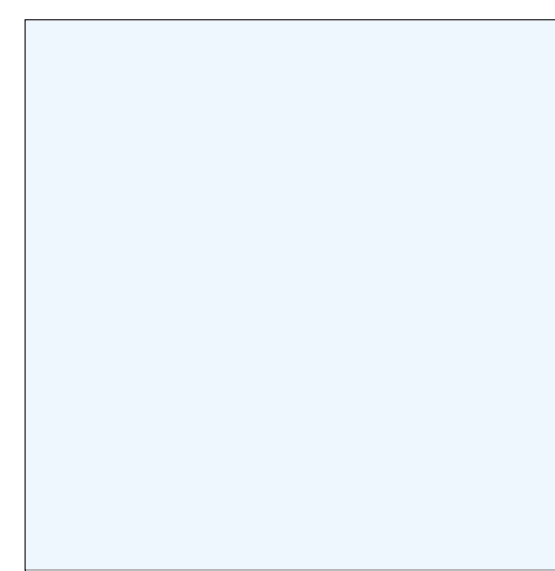
1 North-East/ Pinckney Elevation- Block 88  
A5.01 1/8" = 1'-0"



GL-1  
CURTAINWALL SYSTEM  
W/ BLUE-GREY GLASS



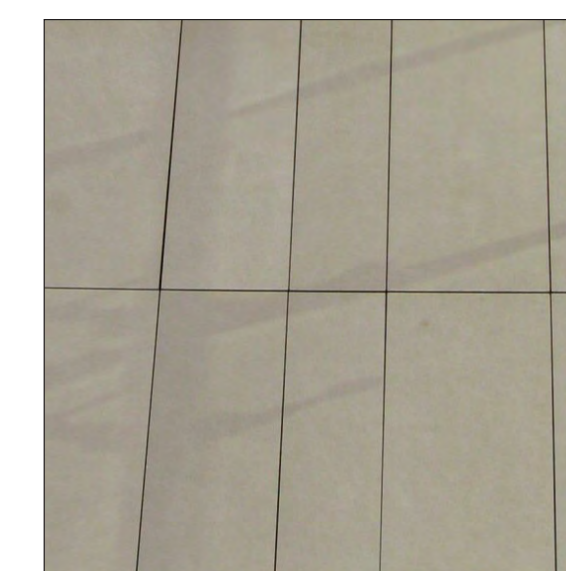
GL-2  
CURTAINWALL SYSTEM W/ WHITE FRIT ON  
CLEAR GLASS



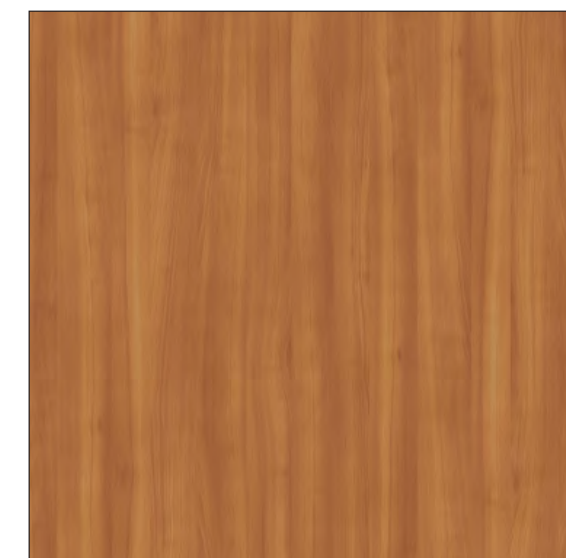
GL-3  
CURTAINWALL SYSTEM  
W/ CLEAR GLASS



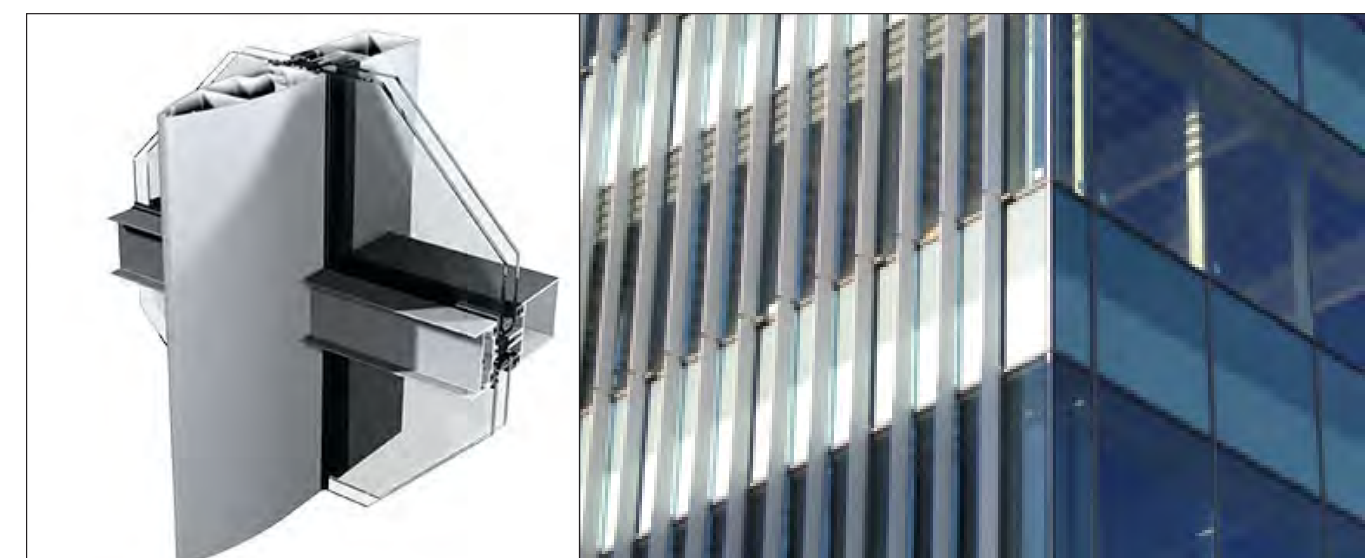
CR-1  
CONCRETE



LS-1  
HONED LIMESTONE PANEL



WD-1  
SOLID PHENOLIC PANELS W/  
WOOD GRAIN TEXTURE



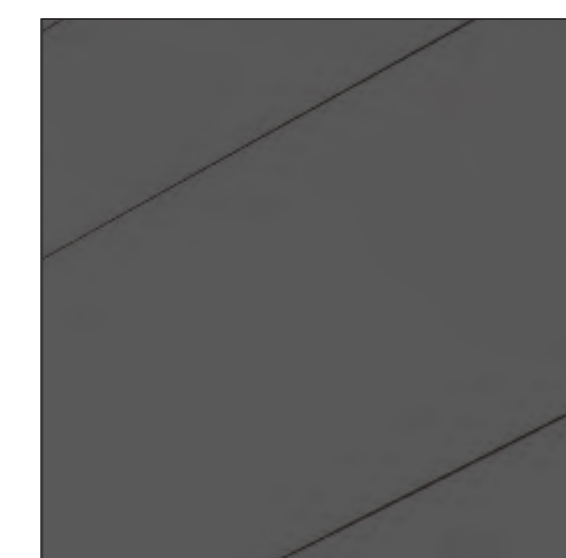
SH-1  
CURTAINWALL SYSTEM W/ VERTICAL MULLION  
CAP EXTENSIONS



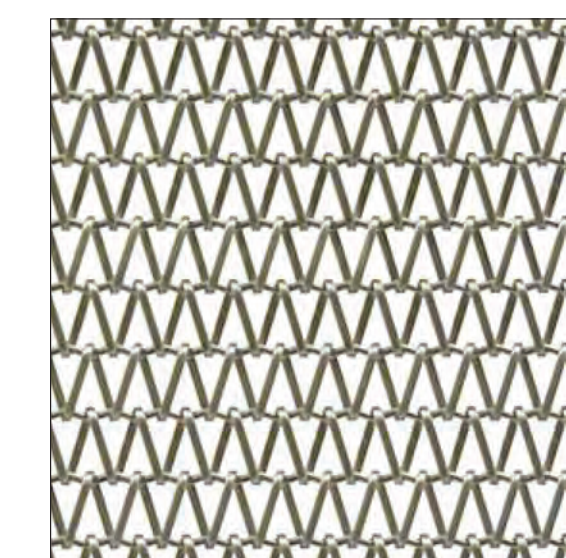
MP-1  
WHITE METAL PANEL



MP-2  
LIGHT GRAY METALLIC  
METAL PANEL



MP-3  
DARK GRAY METAL PANEL



SSM-1  
STAINLESS STEEL MESH

1 Exterior Elevation Material Palette  
A5.04 NTS

Developer:  
JDS Development, LLC

Project Manager:  
Hammes Company

Architects:  
KMD  
ARCHITECTS

Potter  
Lawson  
Success by Design

Exact Sciences at  
Judge Doyle Square

Madison, Wisconsin

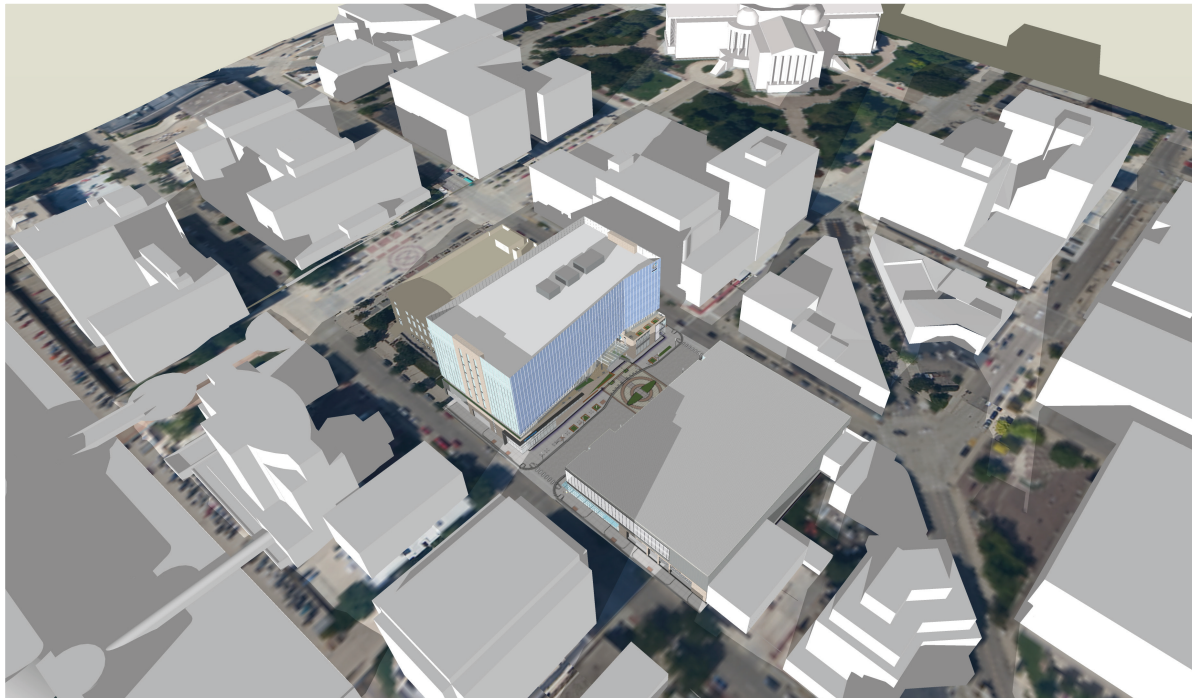
Project #: 2015.17.00

Date	Issuance/Revisions	Symbol
08/21/2015	Schematic Design	

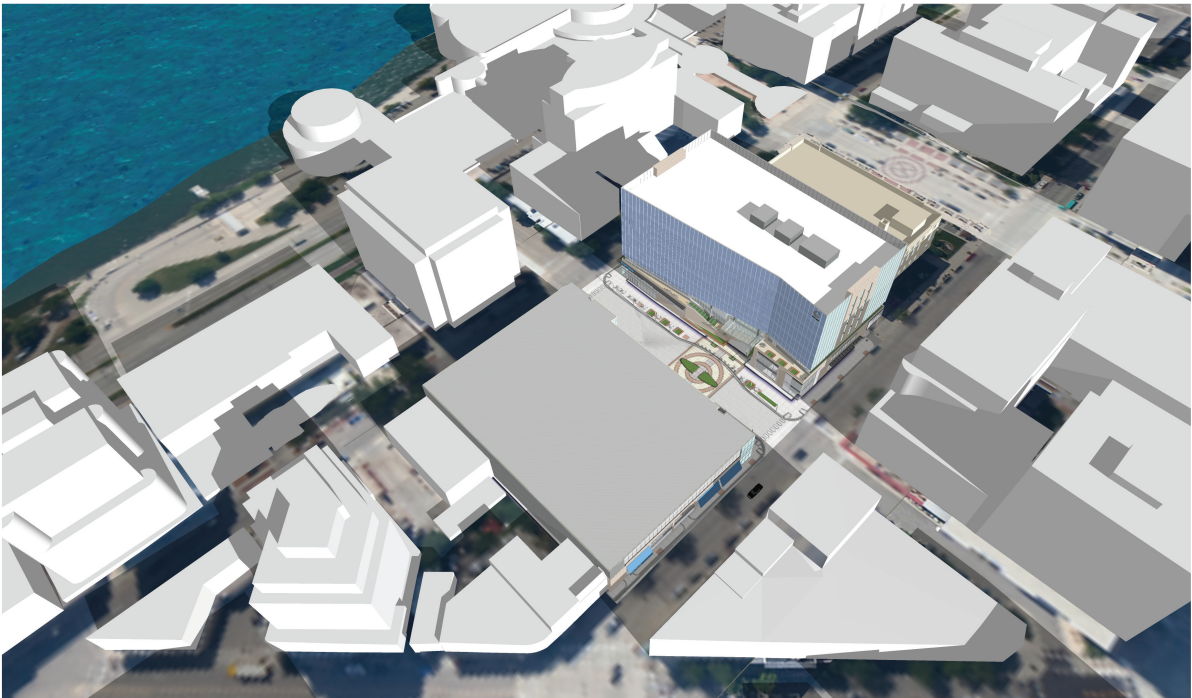
Exterior Elevations

A5.04





AERIAL VIEW 1



AERIAL VIEW 2



AERIAL VIEW 3



AERIAL VIEW 4

Developer:  
JDS Development, LLC

Project Manager:  
Hammes Company

Architects:  
**KMD**  
ARCHITECTS

**Potter  
Lawson**  
Success by Design

Exact Sciences at  
Judge Doyle Square

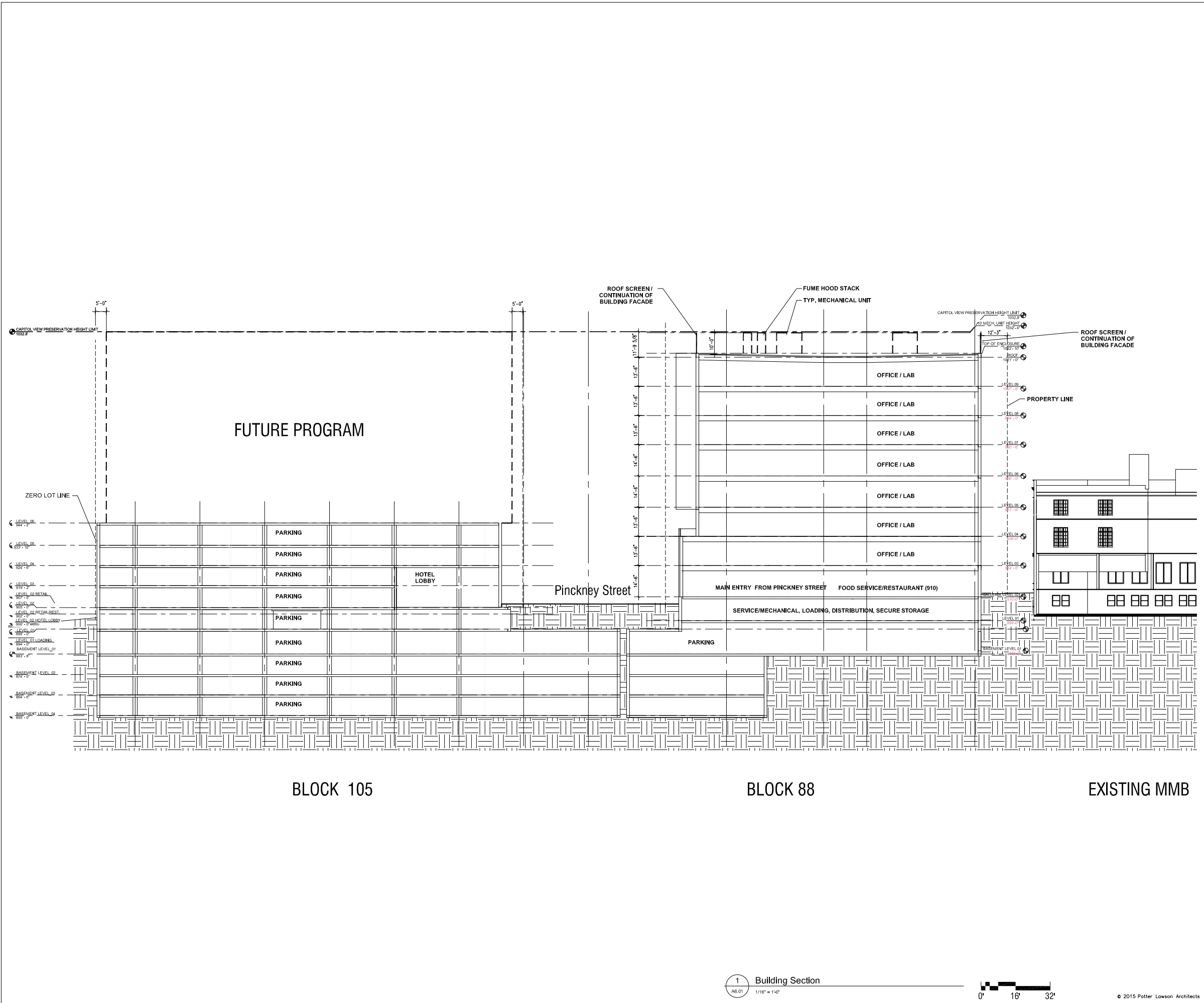
Madison, Wisconsin

Project #: 2015.17.00

Date	Issuance/Revisions	Symbol
08/21/2015	Schematic Design	

Exterior Elevations





Developer:  
JDS Development, LLC

Project Manager:  
Hammes Company

Architects:  
**KMD**  
ARCHITECTS

**Potter  
Lawson**  
Success by Design

Exact Sciences at  
Judge Doyle Square

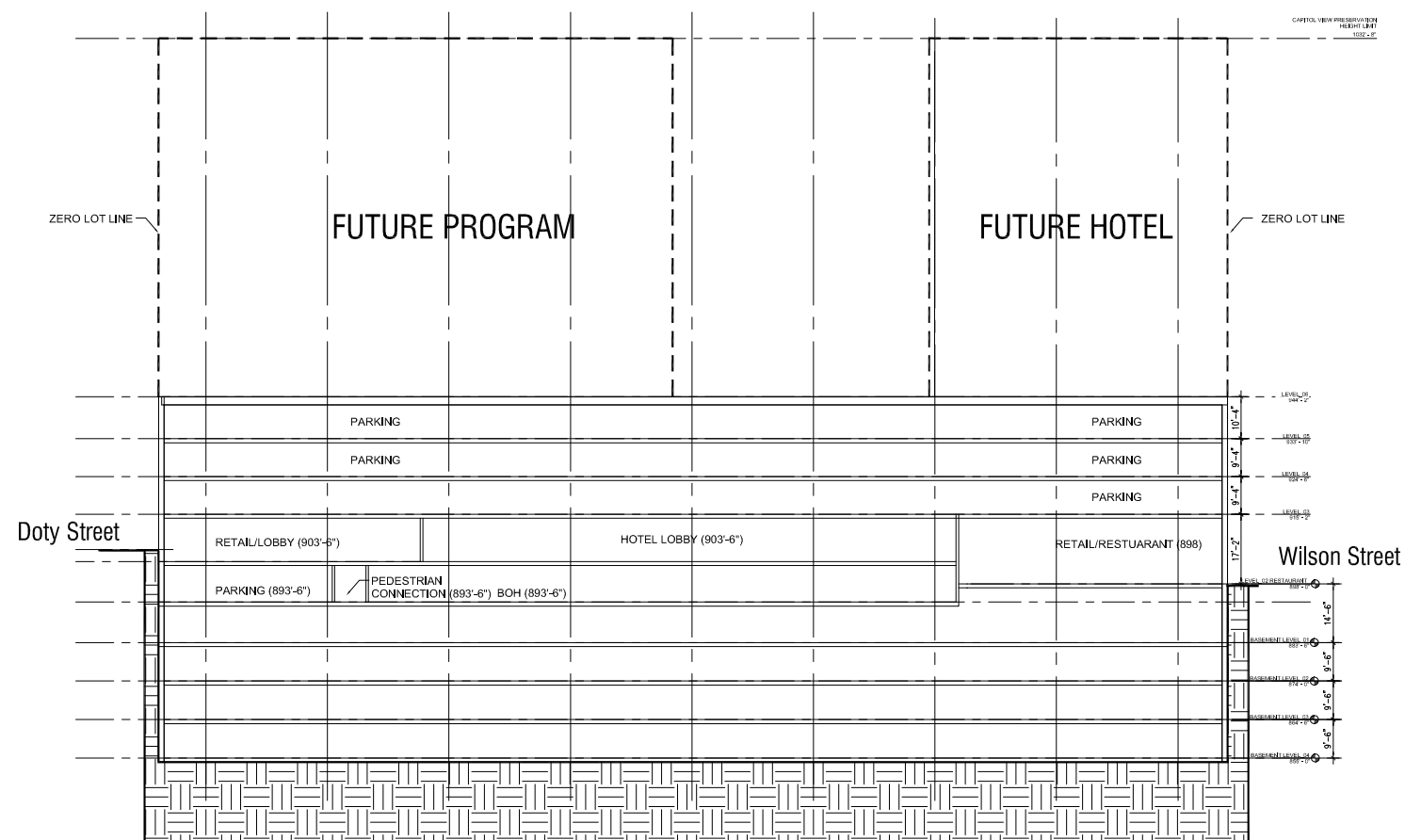
Madison, Wisconsin  
Project #: 2015.17.00

Date	Issuance/Revisions	Symbol
08/21/2015	Schematic Design	

Building Section

A6.01





BLOCK 105

Developer:  
JDS Development, LLC

Project Manager:  
Hammes Company

Architects:  
KMD  
ARCHITECTS

Potter  
Lawson  
Success by Design

Exact Sciences at  
Judge Doyle Square

Madison, Wisconsin

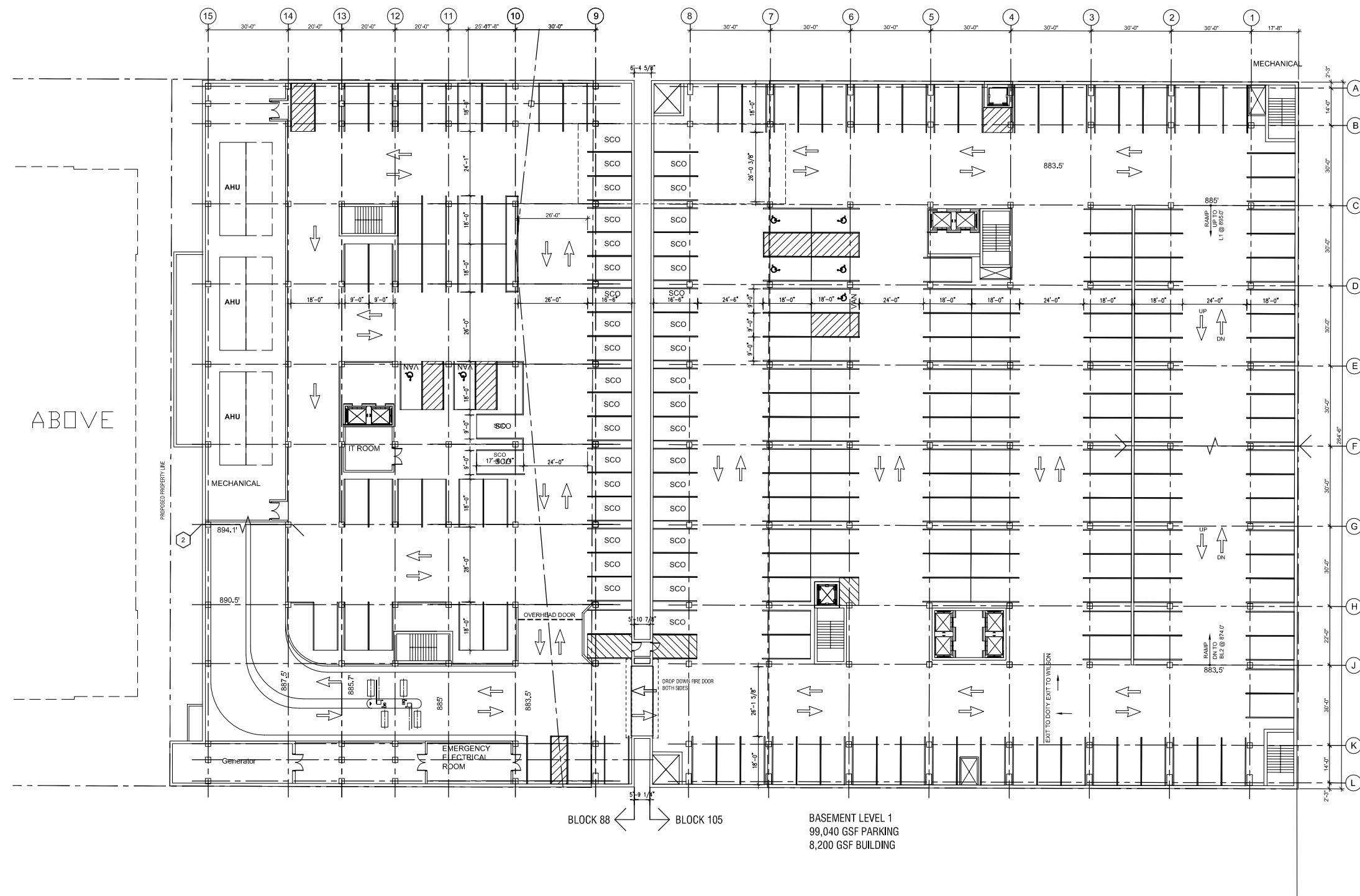
Project #: 2015.17.00

Date	Issuance/Revisions	Symbol
08/21/2015	Schematic Design	

Building Section

A6.02





ABOVE

BLOCK 88 ← → BLOCK 105

BASEMENT LEVEL 1  
99,040 GSF PARKING  
8,200 GSF BUILDING

Developer:  
JDS Development, LLC  
Project Manager:  
Hammes Company

Architects:  
**KMD**  
ARCHITECTS

**Potter  
Lawson**  
Success by Design

Exact Sciences at  
Judge Doyle Square

Madison, Wisconsin  
Project #: 2015.17.00

Date	Issuance/Revisions	Symbol
08/21/2015	Schematic Design	

Basement Level 1 Plan

A2.03



Developer:  
JDS Development, LLC

Project Manager:  
Hammes Company

Architects:  
KMD  
ARCHITECTS

Potter  
Lawson  
Success by Design

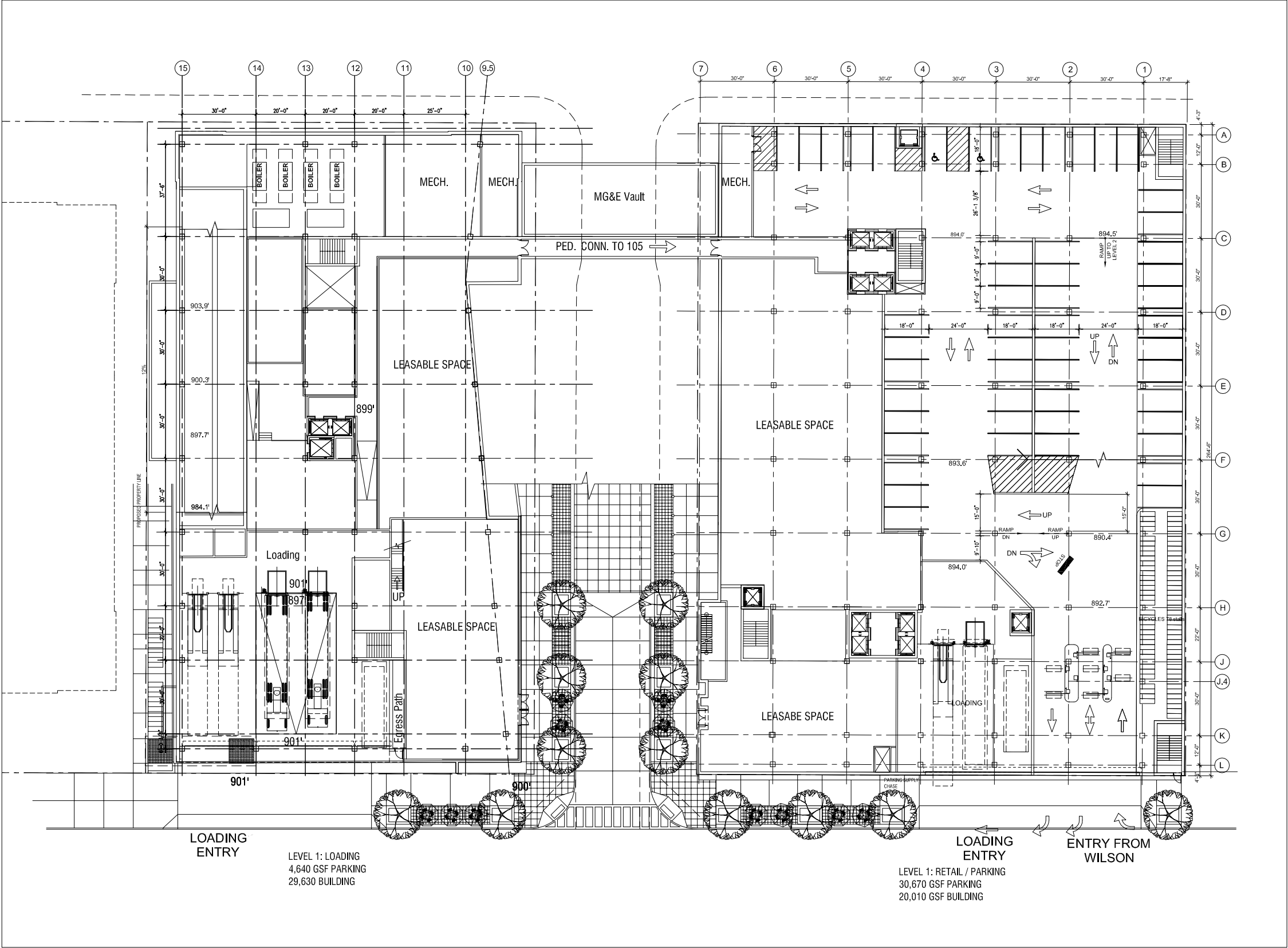
Exact Sciences at  
Judge Doyle Square

Madison, Wisconsin  
Project #: 2015.17.00

Date	Issuance/Revisions	Symbol
08/21/2015	Schematic Design	

Level 1 Plan

A2.04



1  
A2.04  
Level 1 Plan  
1/16" = 1'-0"

0' 16' 32'  
© 2015 Potter Lawson Architects



Developer:  
JDS Development, LLC

Project Manager:  
Hammes Company

Architects:  
**KMD**  
ARCHITECTS

**Potter  
Lawson**  
Success by Design

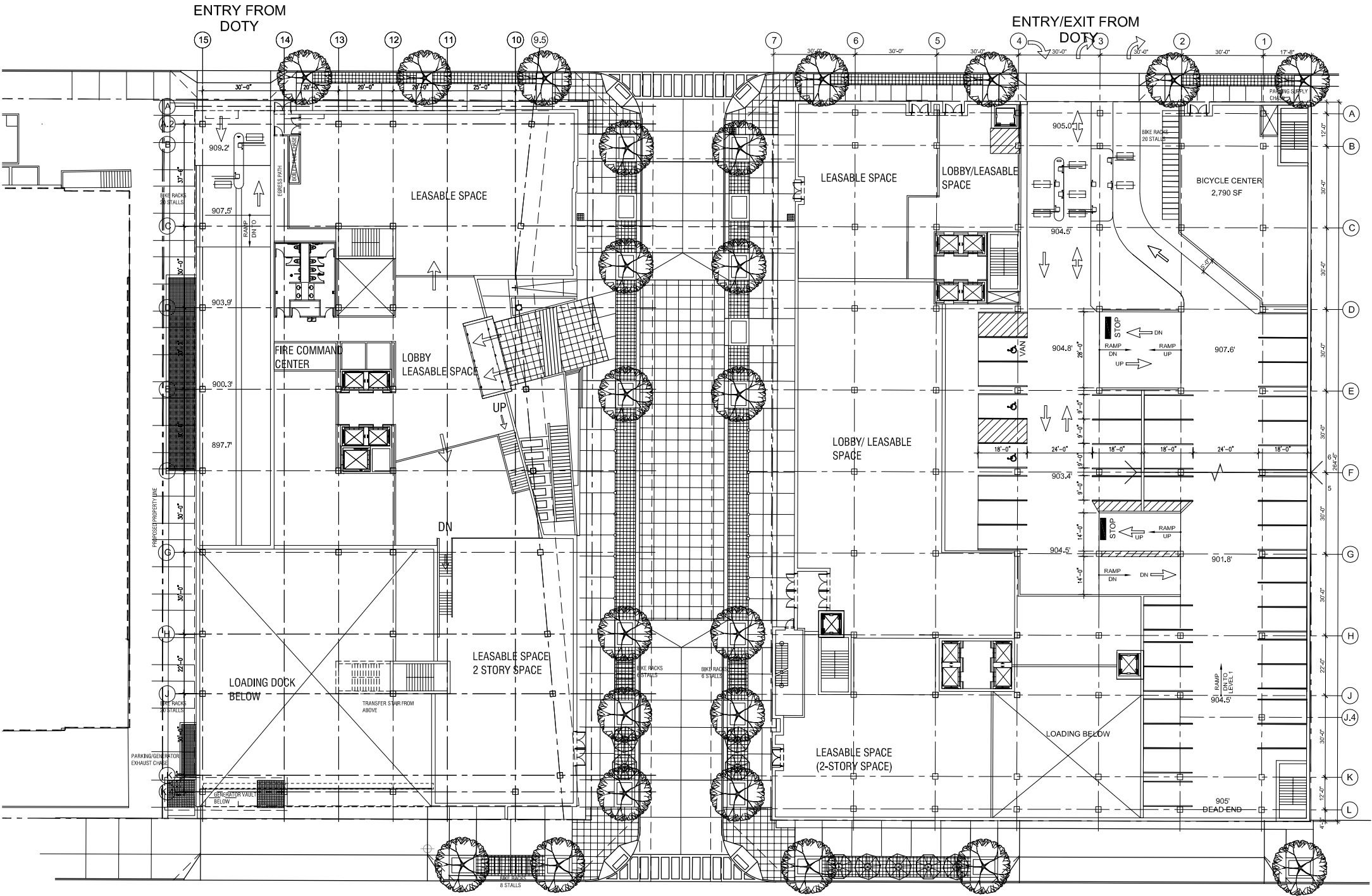
Exact Sciences at  
Judge Doyle Square

Madison, Wisconsin  
Project #: 2015.17.00

Date	Issuance/Revisions	Symbol
08/21/2015	Schematic Design	

Level 2 Plan

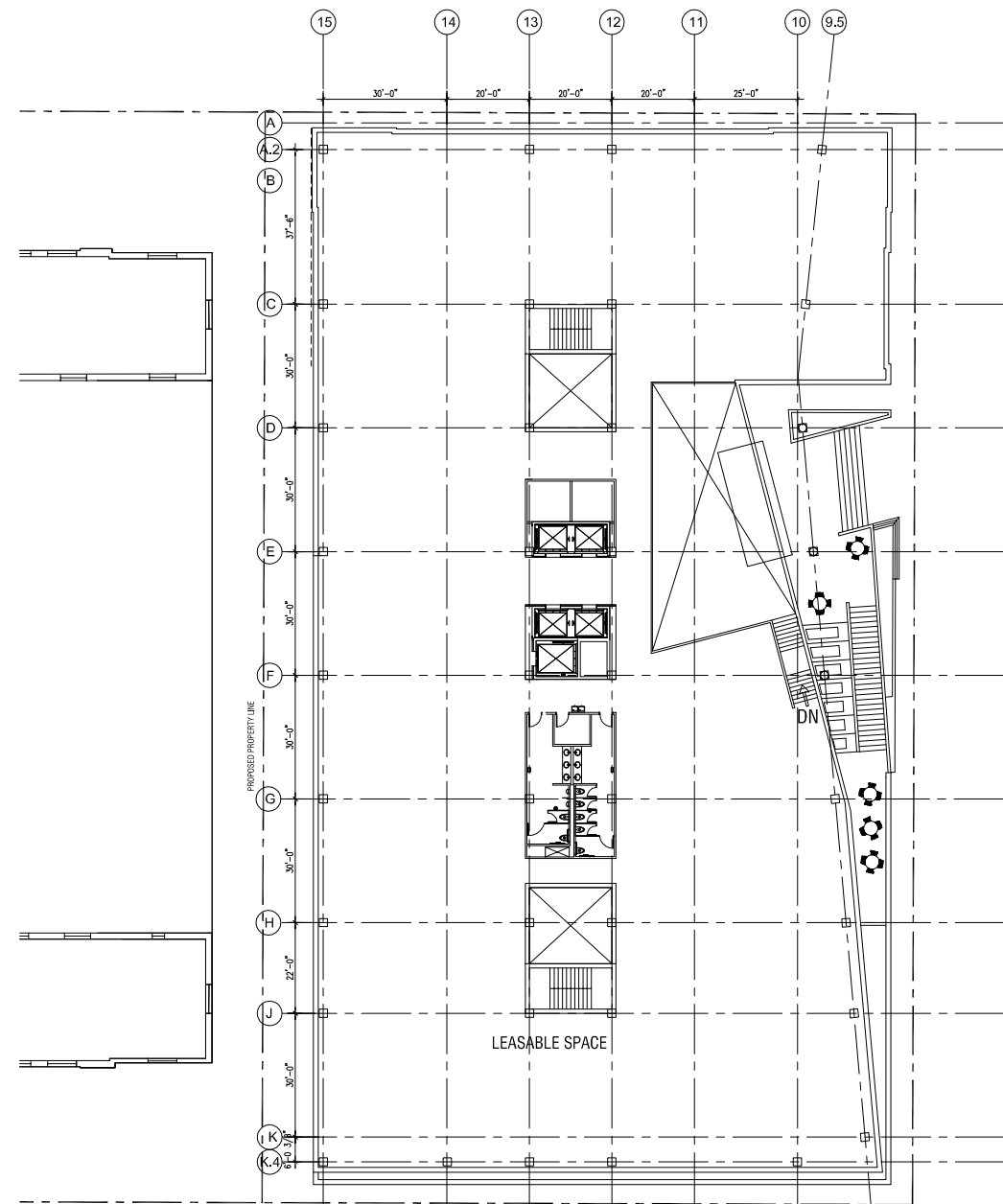
A2.05



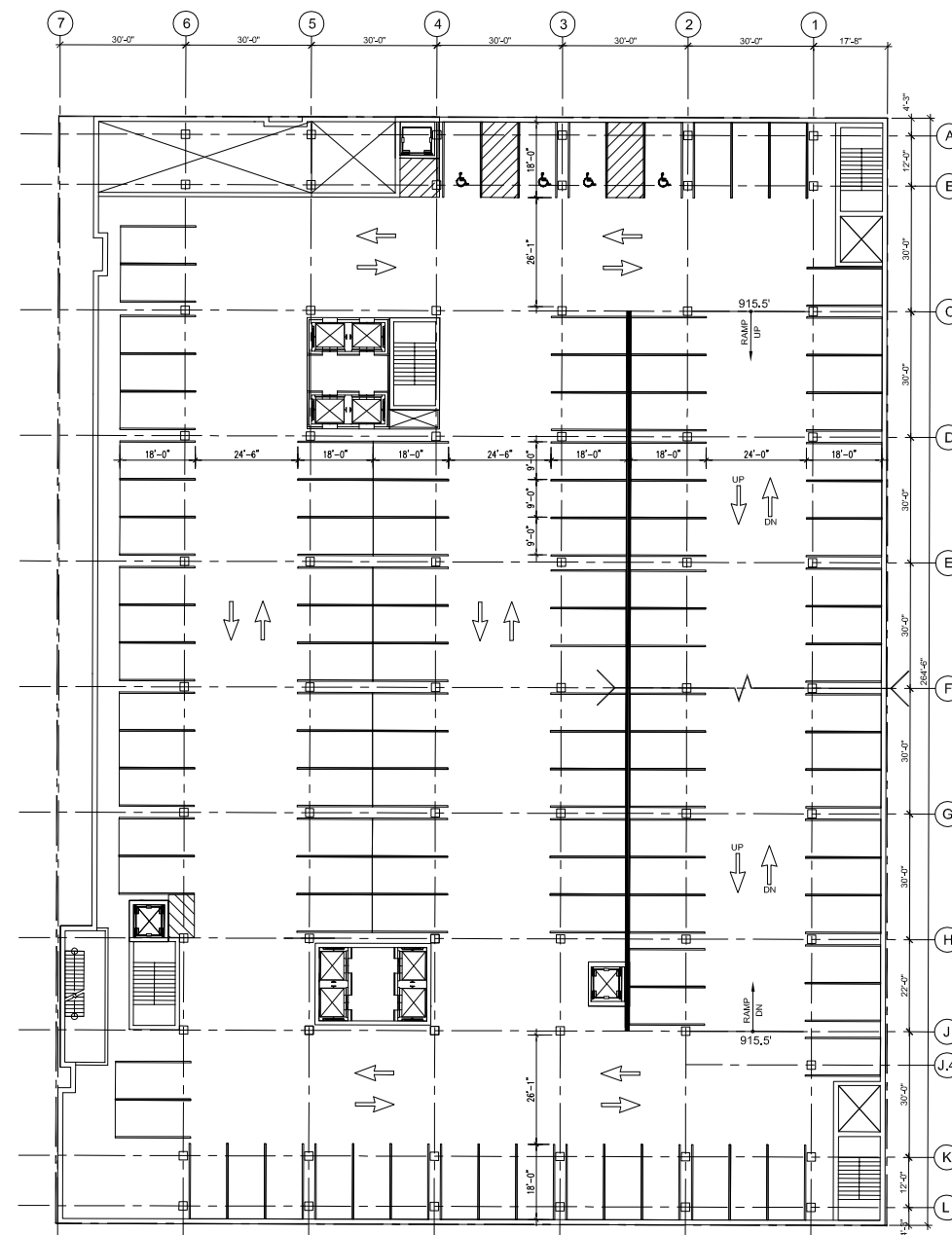
LEVEL 2: ENTRY / FOOD HALL  
16,550 GSF BUILDING

LEVEL 2: PARKING / RETAIL  
29,250 GSF PARKING  
13,930 GSF BUILDING





LEVEL 3:  
30,700 GSF



LEVEL 3: PARKING  
49,360 GSF

## Exact Sciences at Judge Doyle Square

Madison, Wisconsin

Project #: 2015.17.00

Date	Issuance/Revisions	Symbol
08/21/2015	Schematic Design	

Level 3 Plan

**A2.06**

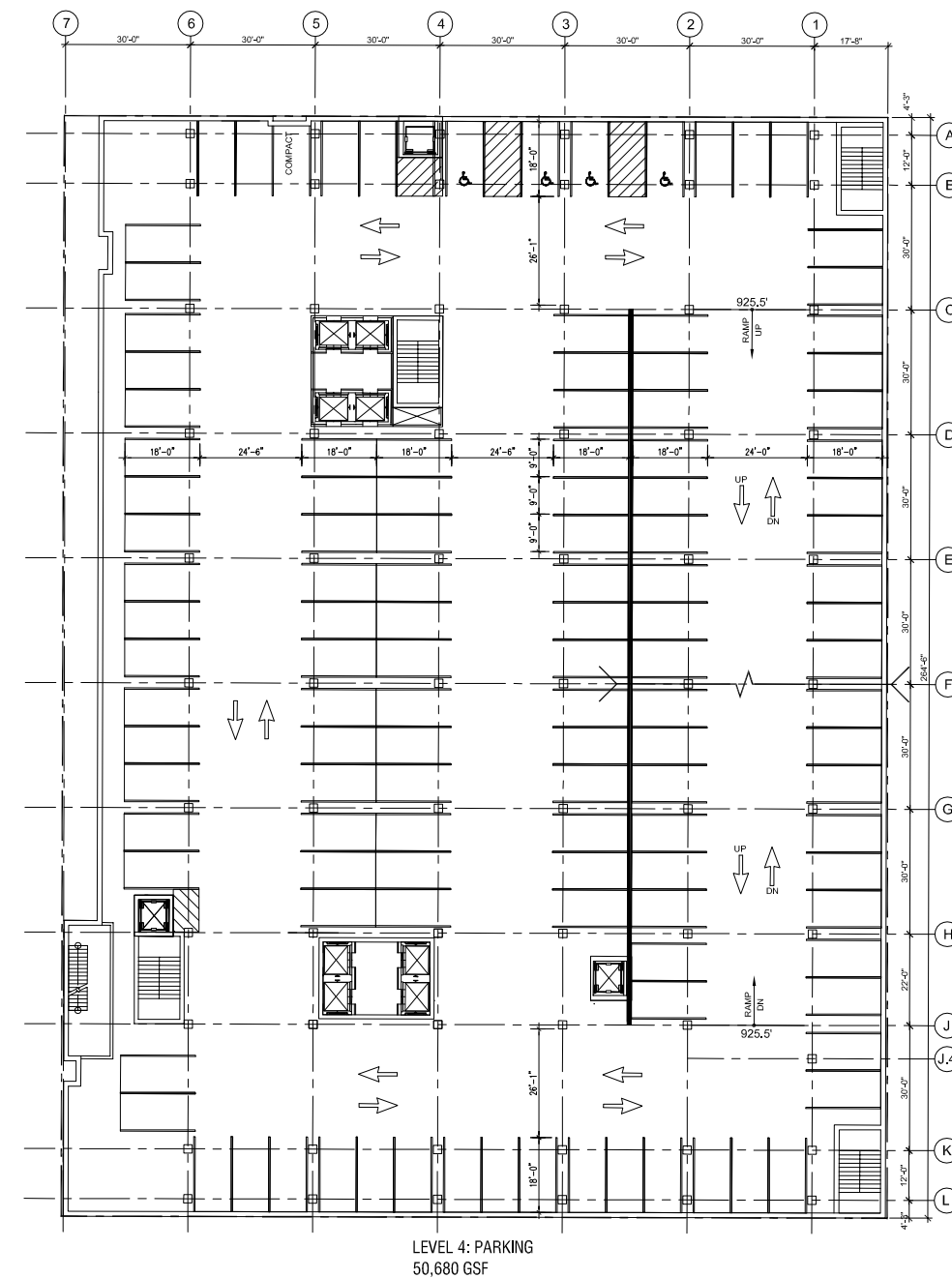




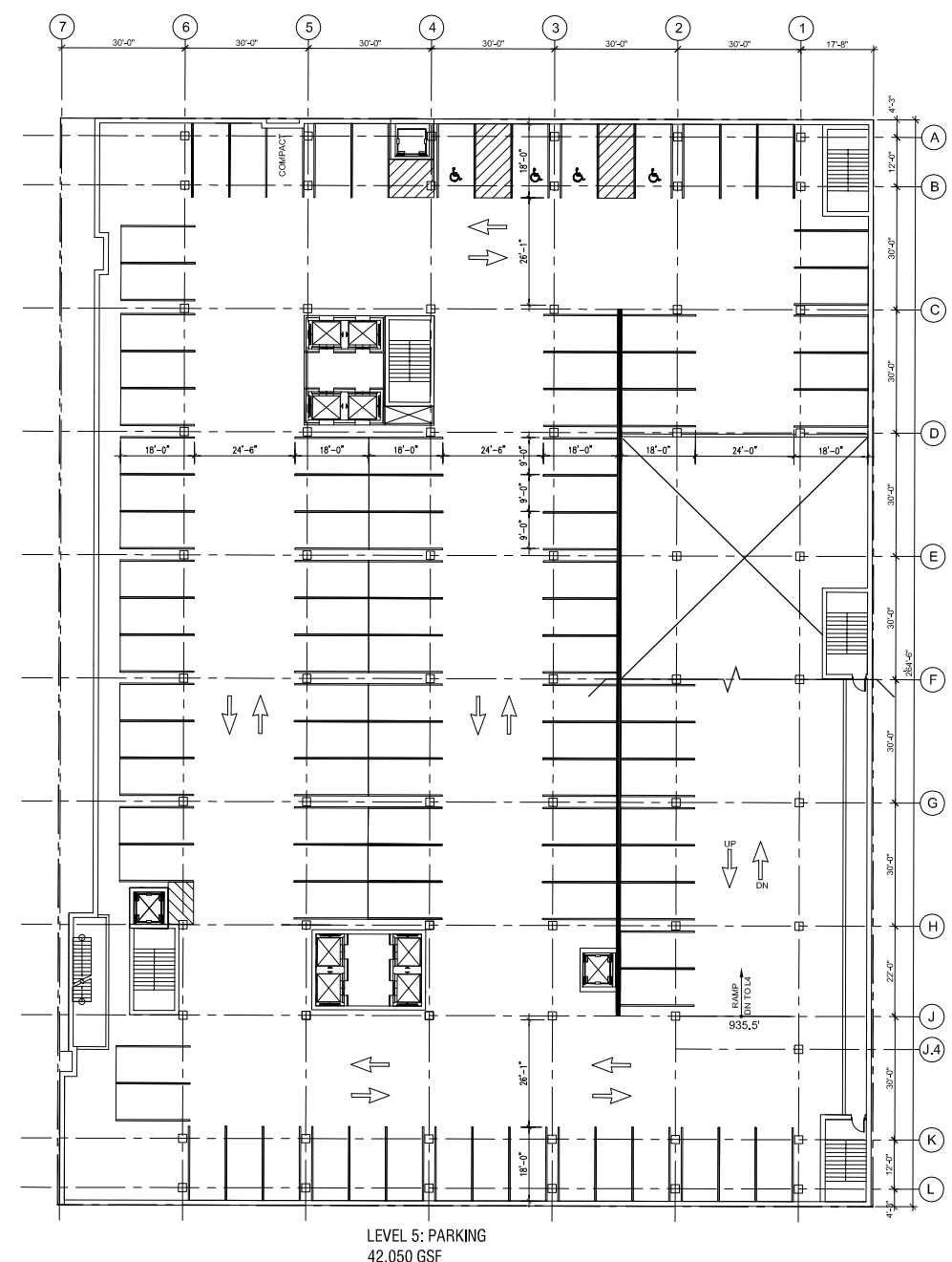
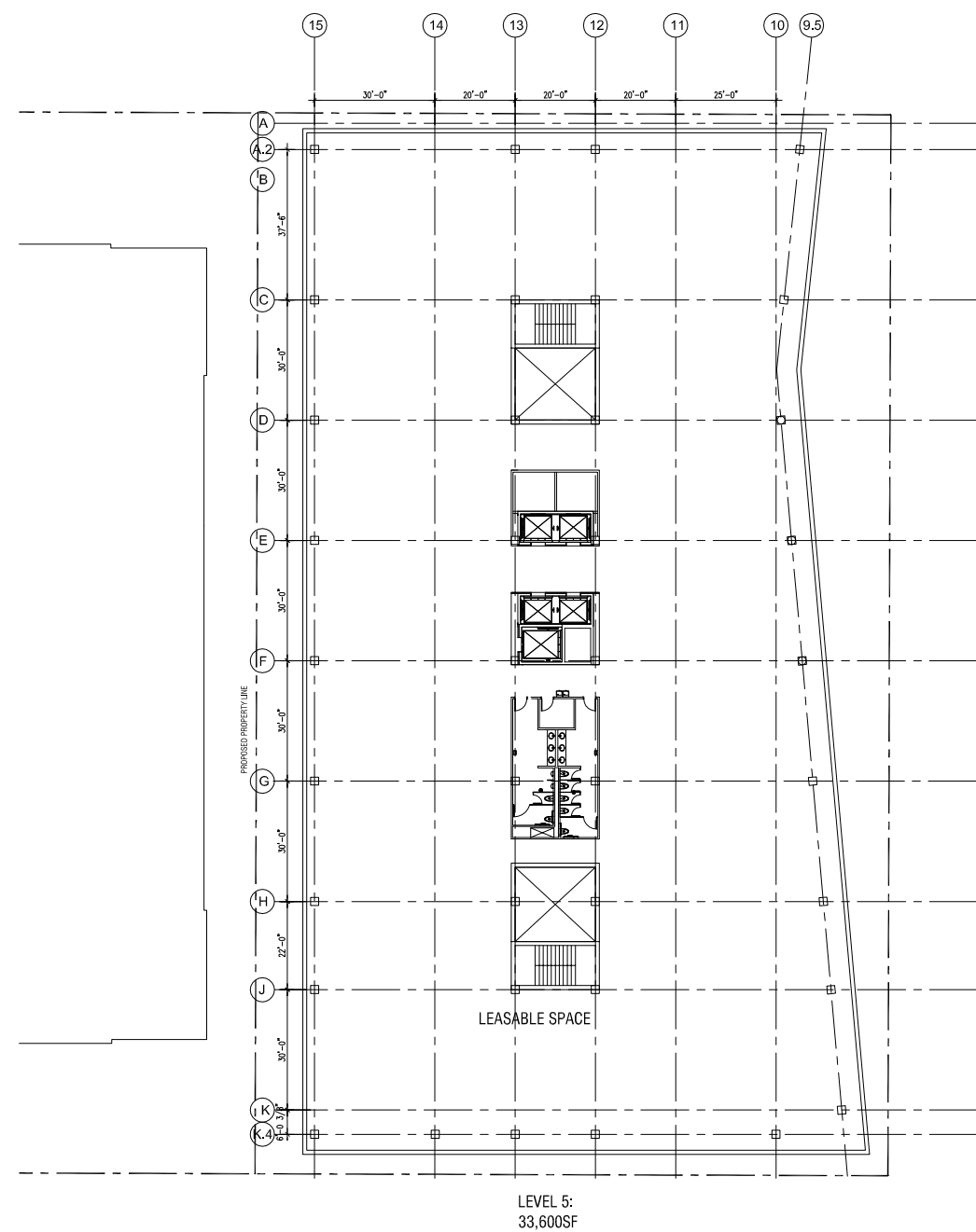
**Potter  
Lawson**

Success by Design

A2.07











**Potter  
Lawson**

Success by Design

## A2.09