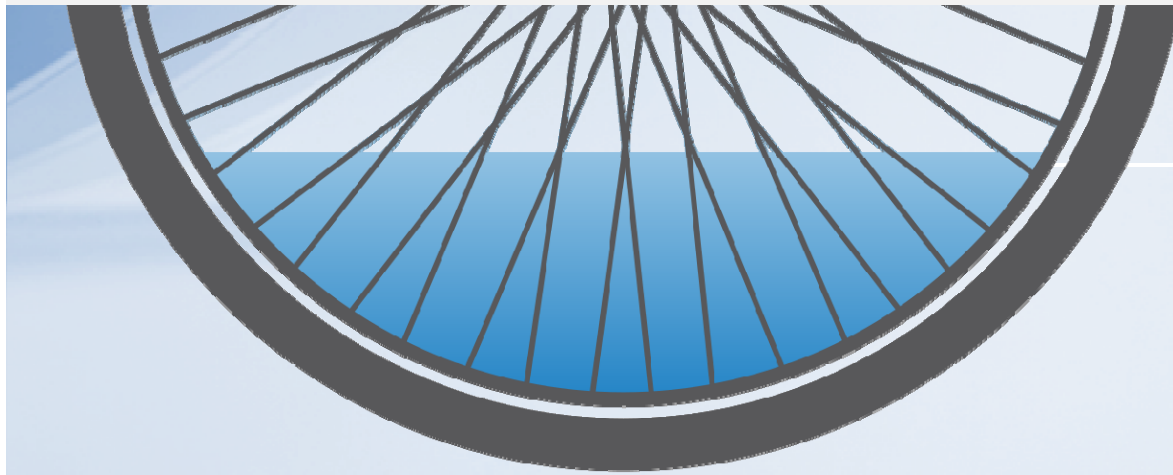




2015 Bicycle Transportation Plan

Madison Metropolitan Area and Dane County



Bicycle Transportation Plan Scope



- Geographic area is the Madison area and Dane County
- Comprehensive – covers all aspects of bicycle planning, including education and encouragement activities as well as facilities planning
- Covers transportation issues in urban and rural areas, but does not include purely recreational bicycling (e.g., mountain bike trails)

Advisory Committees



Technical Committee

- MPO Policy Board
- UW-Madison
- Bike Federation of WI
- WisDOT
- Dane County
- City of Madison
- Fitchburg, Middleton, and Sun Prairie
- Town of Dunn

Policy Committee

- MPO Policy Board
- City of Madison
- Fitchburg and Verona
- Members of the public, bikeway users, and other interests
- Others

Public Engagement



- madisonareampo.org/planning/BikePlan.cfm
- Online mapping tool
- Public meetings
- Events
 - Ride the Drive
 - Dawley Bike Hub Grand Opening
 - Madison in Motion

Vision



- Safe, convenient and enjoyable bicycle network.
- Network will link neighborhoods and communities to jobs, services, schools, shops, and parks.
- Bicycling will be fostered as an integral part of daily life.
- Complete neighborhoods are planned and built.



Goals



- **Safety** Reduce crash rates
- **Usage** Increase usage
- **Connectivity** Convenient and enjoyable network
- **Equity** Equitable access to benefits of bicycling
- **Livability** Enhance quality of life
- **Longevity** Maintenance and cost effectiveness



Groups of Strategies



- Education
- Encouragement
- Enforcement
- Engineering
- Envisioning / Planning
- Evaluation
- End of Trip Facilities and Multi-Modal Connections



Education



- Safe Routes to School
- Learn to ride programs
- We Are All Mechanics
- Trainer training
- Share and Be Aware Campaign
- UW Bicycle Resource Center



Encouragement



- Infrastructure
- Ride the Drive
- Bike Week
- National Bike Challenge
- Bike Maps
- Bike Valet
- B-Cycle
- TDM programs



Enforcement



- Police and EMS on Bikes
- Madison Traffic Safety Enforcement Team
- UWPD Be Bright Light Campaign
- Ticket Diversion Program
- Training for Officers



Engineering

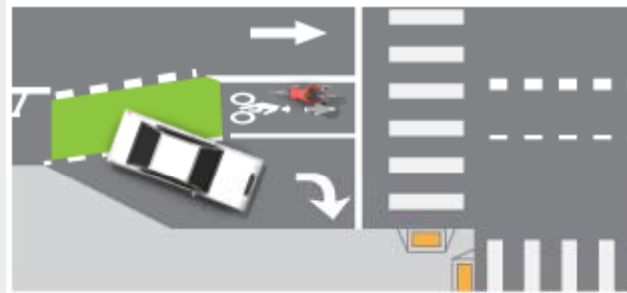
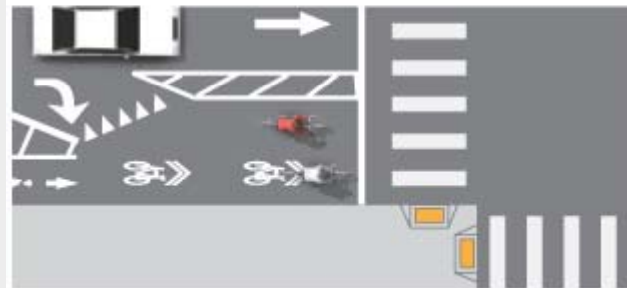
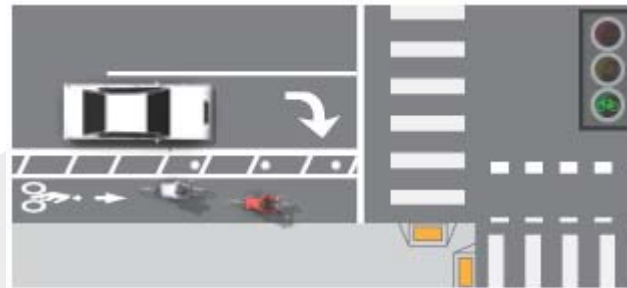


Image: NACTO

Engineering Toolbox

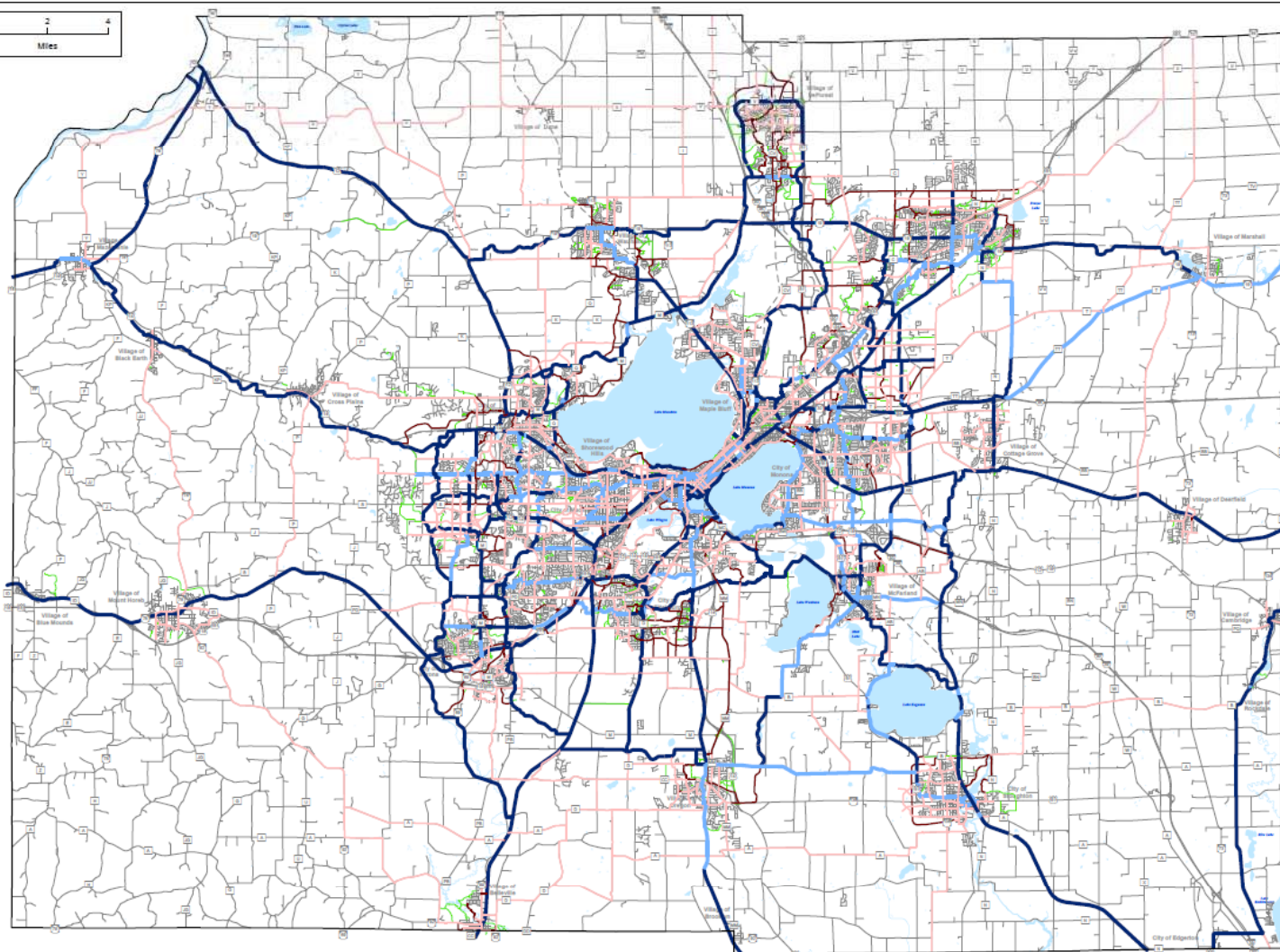
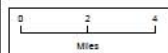


- Bicycle priority streets
- Bike lanes
- Buffered bike lanes
- Counter-flow bike lanes
- One-way protected bike lanes
- Two-way protected bike lanes
- Bus, bike, and right turn lanes
- Paved shoulders
- Shared use paths
- Side paths/Wide sidewalks

Bicycle Transportation Plan

Madison Metropolitan Area and Dane County

Future Bicycle Functional Class Dane County



Primary Bicycle Network

- Primary (Shared Use Path)
- Primary (On Street)

Secondary Bicycle Network

- Secondary (Shared Use Path)
- Secondary (On Street)

Other Bicycle Facilities

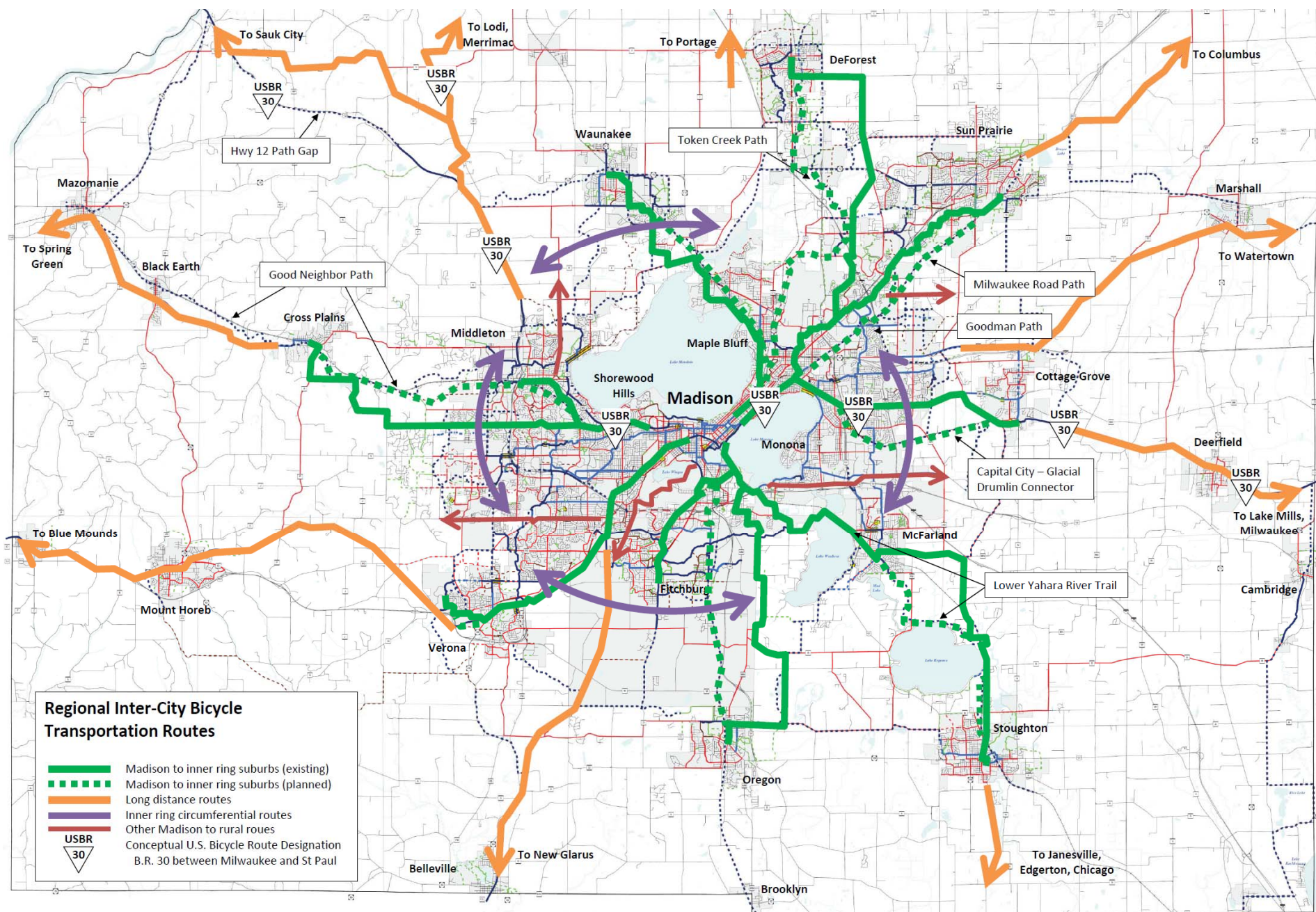
- Other Existing or Planned Shared Use Paths

Prepared by staff to the
Madison Area
T.P.B.
Transportation Planning Board
A Regional Planning Organization

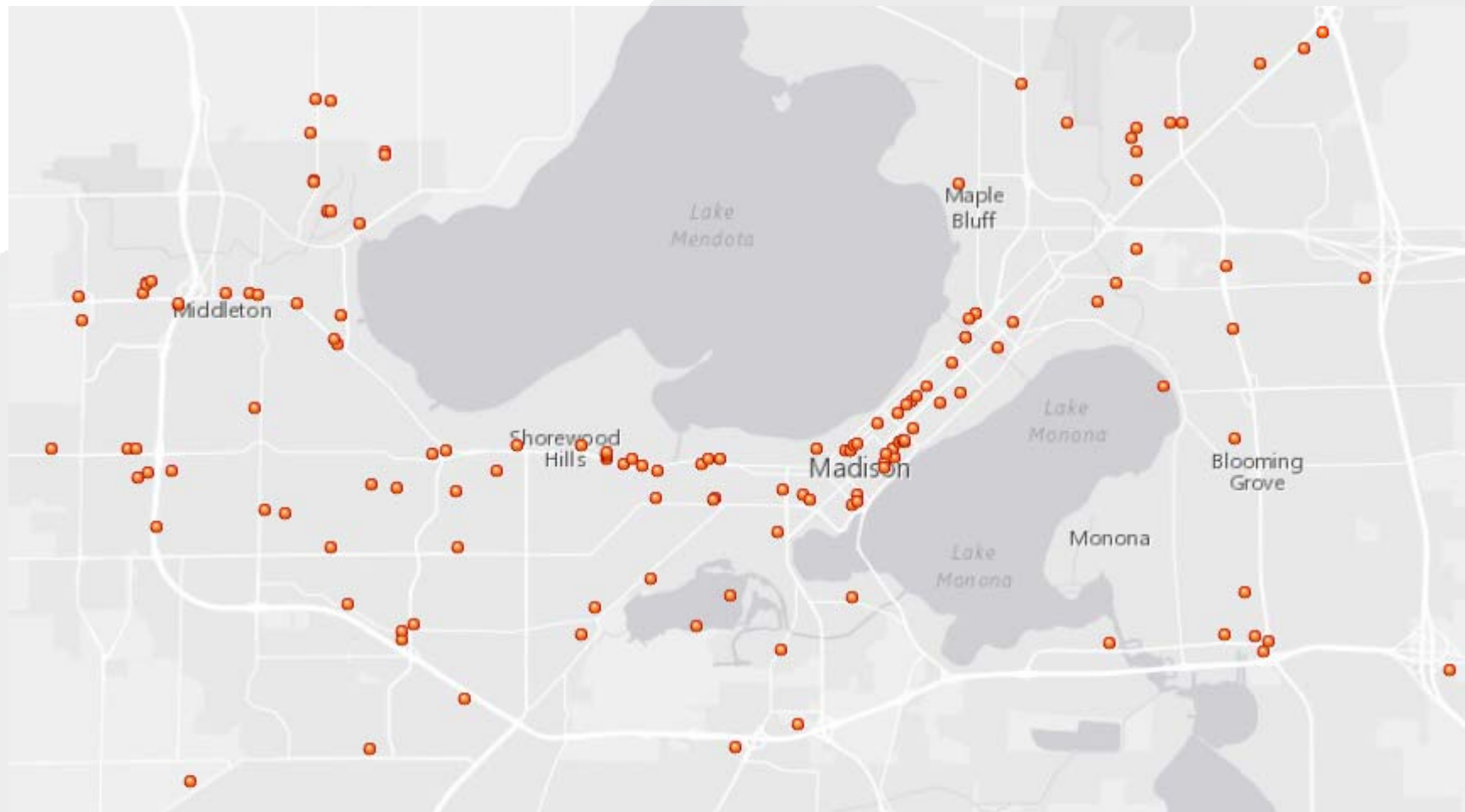
Source:
Bicycle Network Study (2014/2015)
Madison Area Transportation Planning Board
Madison Area Transportation Planning Board
Madison Area Transportation Planning Board
Madison Area Transportation Planning Board

Map Date:
Map Date:
Map Date:
Map Date:
Map Date:

Date Revised: 01/01/15
Updated Council/City/County
000000, 0000, 0000



Bicycle Barriers



On-Street Facilities



- Identify need or warrant for new/improved bicycle facilities on urban streets and rural roads based on traffic speeds and volumes and network connectivity.
- Specific facilities are not recommended due to the complexity of each corridor. Alternatives should be investigated as part of project design process.
- Improvements may not be practical or cost-effective in all cases due to right-of-way and engineering constraints and competing needs (e.g., parking, widened sidewalk).

Shared-Use Paths



- All future planned paths shown
- Planned paths prioritized based on their regional significance and transportation utility
- Financial analysis done based on current funding levels
- Prioritized projects presented in three time period groups:
 - Programmed (2015-2019)
 - Medium range (2020-2035)
 - Long range (2036-2050)

Madison Metropolitan Area and Dane County

Urban On Street Facilites

- Existing Bike Priority Streets
- Existing Bike Lanes*
- Programmed On Street Facilities
- Need for New or Improved On Street Facilities**

Rural On Road Facilities

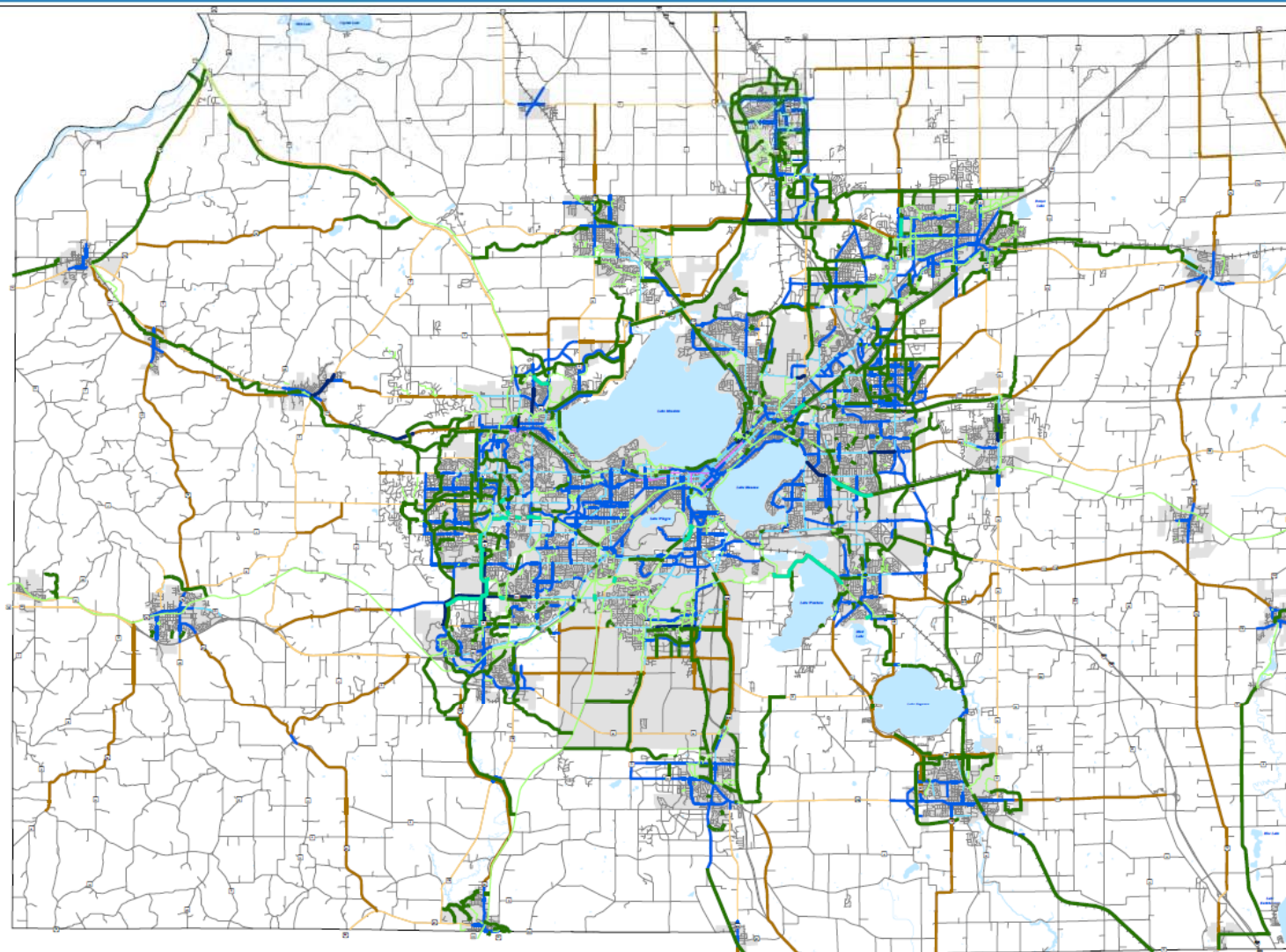
- Existing Shoulders 4 Feet or Greater
 — Need for New or Improved Paved Shoulders**

Off Street Facilities

- Existing Shared Use Path
 Programmed Shared Use Path
 Planned Shared Use Path

* Includes Bus/Bike/Turn Lanes

²² The need for new or improved on street facilities has been identified based on traffic volumes and speeds, roadway cross sections, and other characteristics. Bikeway improvements may not be feasible or practical due to competing needs for sidewalks, terraces, parking, and other right of way constraints.



Prepared by staff to the



Source info:
 Street Name: 2013, Orthopedic Center (O-C-10)
 Hydrography: GSH, 1-24-00 (H0000)
 City: Chicago, IL, 60604, Association: Chicago (C-1)

Author(s):
Geoffrey A. Hodgson
New School for Social Studies in the
City of New York, City College of the City University of New York, New York, NY 10031, USA
E-mail: geoff.hodgson@cityu.edu

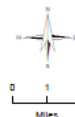
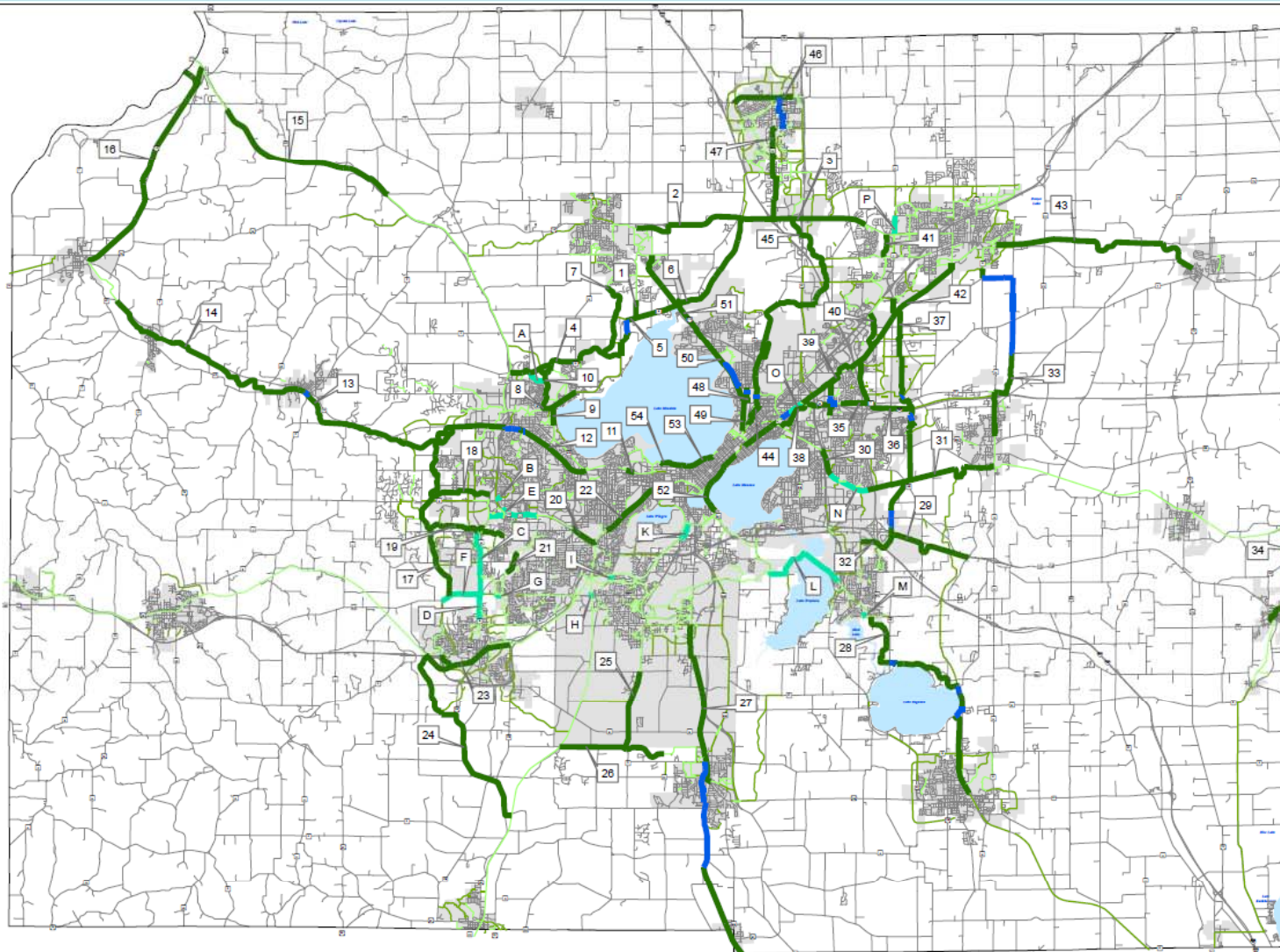
Date Revised: 6/23/2015

Bicycle Transportation Plan

Madison Metropolitan Area and Dane County

Priority Regional Shared-Use Paths

- Existing Shared Use Path
- Programmed Shared Use Path
- Priority New or Improved Regional Shared Use Paths
- On Street Connecting Segments
- Other Planned Shared Use Paths



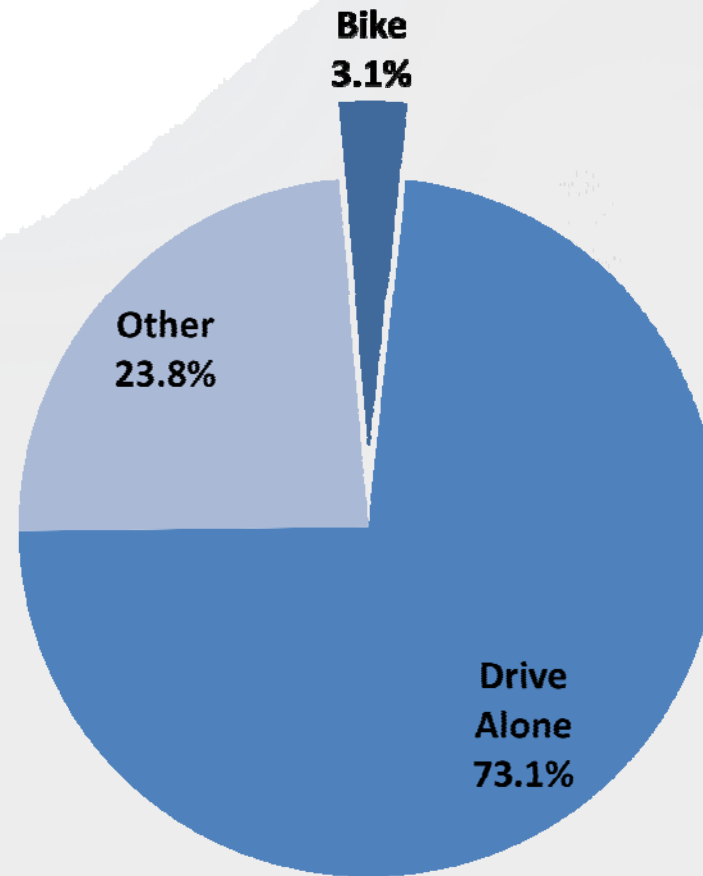
Prepared by staff to the
Madison Area
T.P.B.
Transportation Planning Board
A Metropolitan Planning Organization (MPO)

Source: GIS
Base Map: 2013, OpenStreetMap (OSM)
Map Data: 2013, OpenStreetMap (OSM)
Map Data: 2013, OpenStreetMap (OSM)

Map Date: 2013
Map Author: T.P.B.
Map Project: Madison Area
Map Project: Transportation Planning Board

Date Revised: 01/01/13
Limited Confidentiality Policy
MPO/MSA Name: 3302-0001

Evaluation

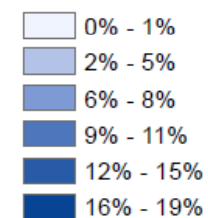
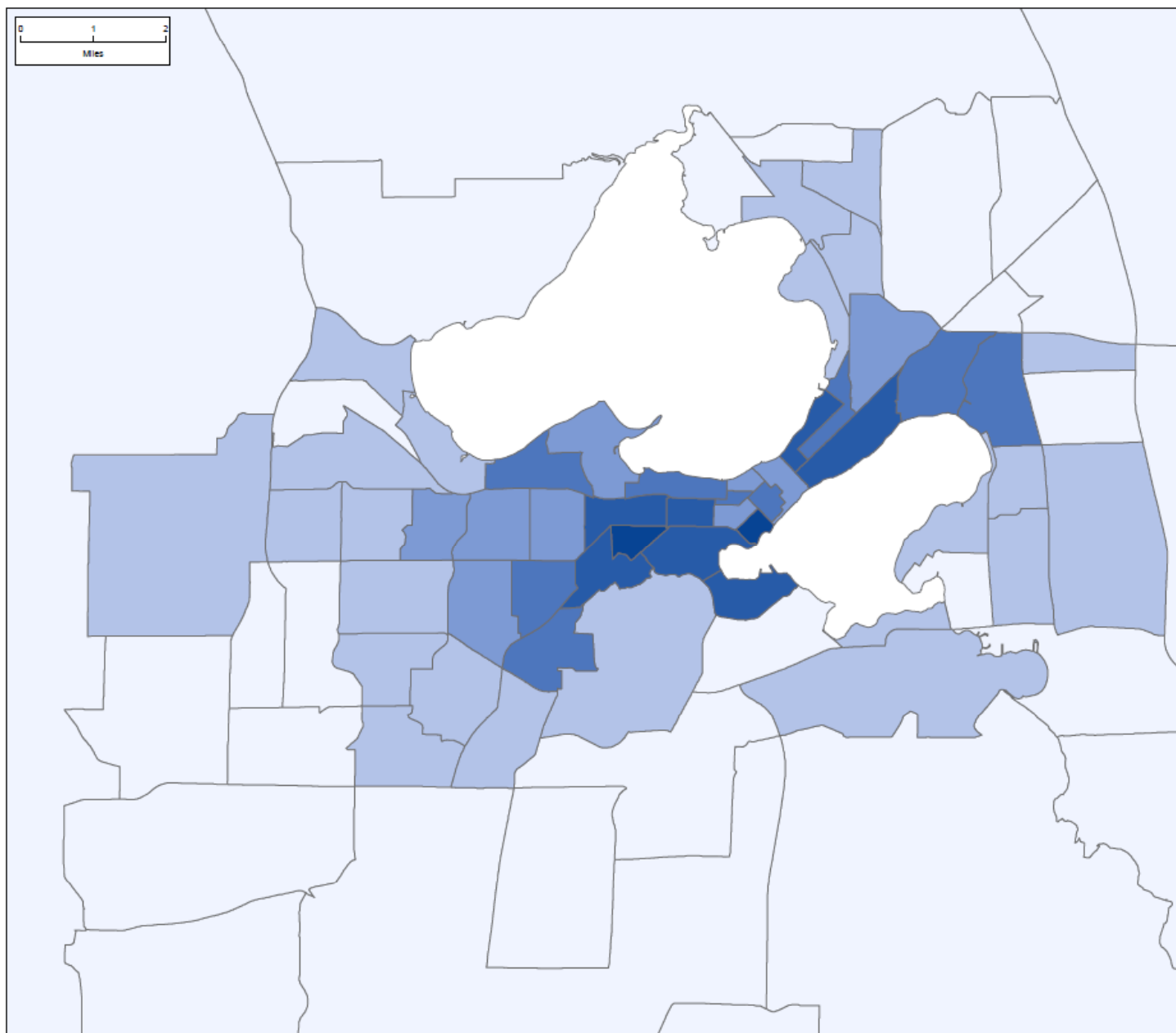


Dane County Commute Mode Share
2010-2012 ACS

Bicycle Transportation Plan

Madison Metropolitan Area and Dane County

Bicycling to Work
Percent of Total
Workers by Census Tract



Prepared by staff to the
Honorable Area
T.P.B.
Transportation Planning Board
A Metropolitan Planning Organization (MPO)

Source: 2000
U.S. Census Bureau, 2000 Census

Map Date: 2001
Map Scale: 1:50,000
Map Projection: NAD 83, UTM Zone 18N
Map Author: T.P.B. Staff

Date Revised: 2001
Source: Census Bureau
2000 Census

Evaluation Summary



Safety	Crash rates
	Fatalities
	Crashes/fatalities per 10,000 daily commuters
Usage	Bicycle counts
	Commute mode share
Connectivity	Documented network gaps
	User satisfaction
	Bicycle LOS
Equity	Population within ¼ mile of premium bikeway
	Relative commute mode share of women and minorities
Livability	Bicycle Friendly Community status
	Communities with dedicated funding for cyclists
Longevity	Proportion of facilities that are plowed in winter
	Path pavement quality

End of Trip Facilities and Multi-Modal Connections



Equity

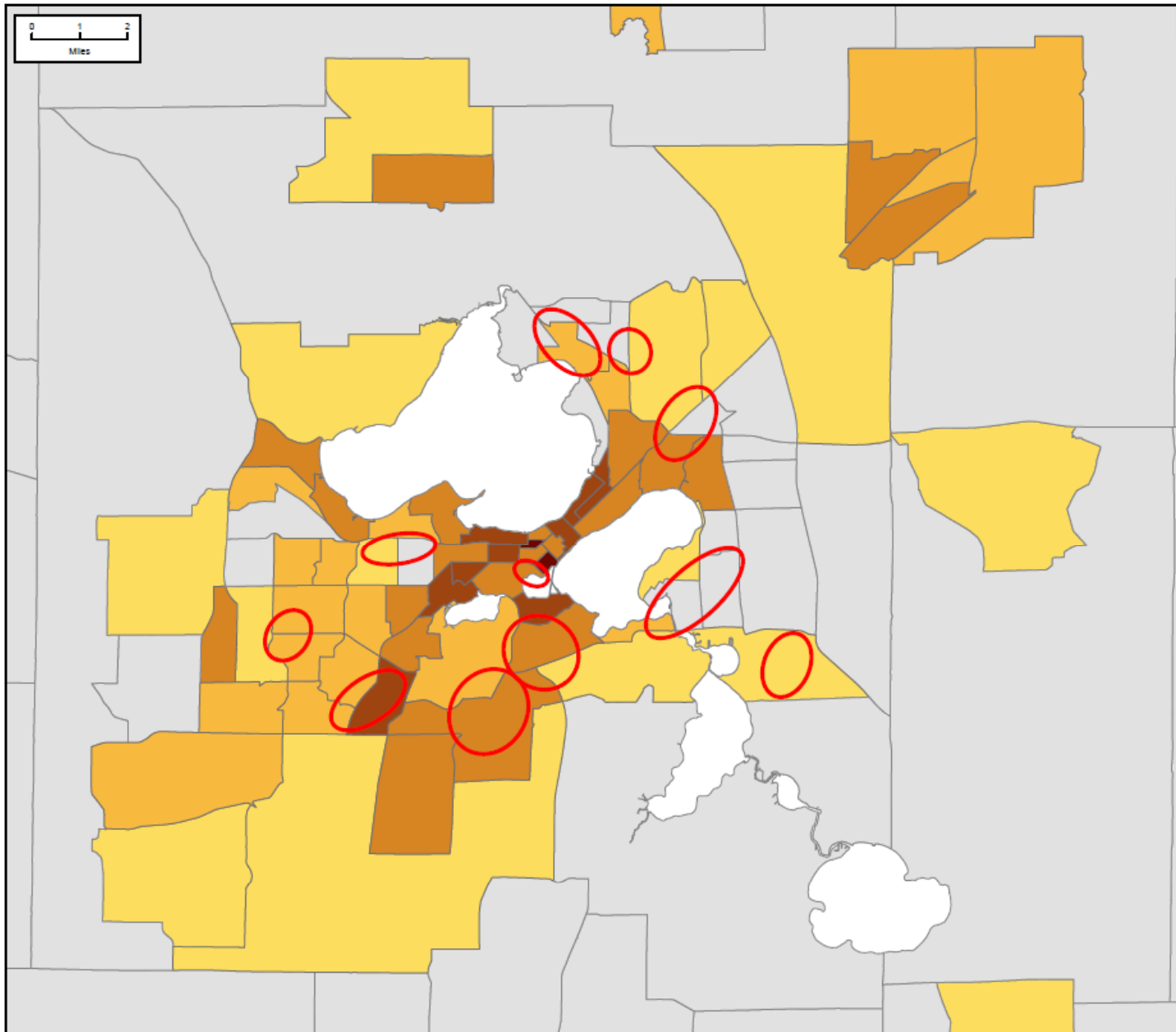


- Environmental Justice
 - Low income populations
 - Minority populations
 - Zero-car households
- Health indicators
 - Asthma
 - Childhood Obesity
 - Adult Diabetes

Bicycle Transportation Plan

Madison Metropolitan Area and Dane County

Miles of Existing Premium
Bicycle Facilities per Square
Mile by Census Tract



Miles of Bicycle Facilities per Square Mile

- 0.00 - 0.50
- 0.51 - 1.00
- 1.01 - 2.00
- 2.01 - 4.00
- 4.01 - 8.00
- 8.01 - 12.00

 Areas of Disparity* Overlap

*Areas where, in general, at least 2 of the 3 areas of concern (areas with concentrations of low-income or zero-car households, minorities, and individuals with health disparities) are present.

Prepared by staff to the
T.P.B.
Transportation Planning Board
A Metropolitan Planning Organization (MPO)

Source: GIS
Maple, Park and Center (2014, 2017)
Road Data: 2015, Information Systems (GIS)
Facilities: 2015, Information Systems (GIS)
Demographic: 2010, U.S. Census Bureau
GIS: 2015, Information Systems (GIS)

April 2018
Maple, Park and Center (2014, 2017)
Road Data: 2015, Information Systems (GIS)
Facilities: 2015, Information Systems (GIS)
Demographic: 2010, U.S. Census Bureau
GIS: 2015, Information Systems (GIS)

Date Revised: 02/2018

Madison Metropolitan Area
01/2018, Date: 02/2018

Next Steps



- Continue to take comments
- Public hearing before MPO board on August 5
- Adoption by MPO in August or September
- Adoption by City of Madison and Dane County
- Adoption or incorporation of recommendations in other local community plans

Bicycle Transportation Plan



madisonareampo.org/planning/BikePlan.cfm

Mike Cechvala

266-4518

mcechvala@cityofmadison.com

