



TLE: 3,956 SQ. FT.

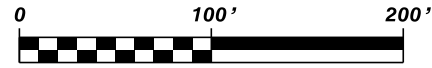
EXISTING EASEMENTS

FOUND 3/4" REBAR
(UNLESS SPECIFIED)

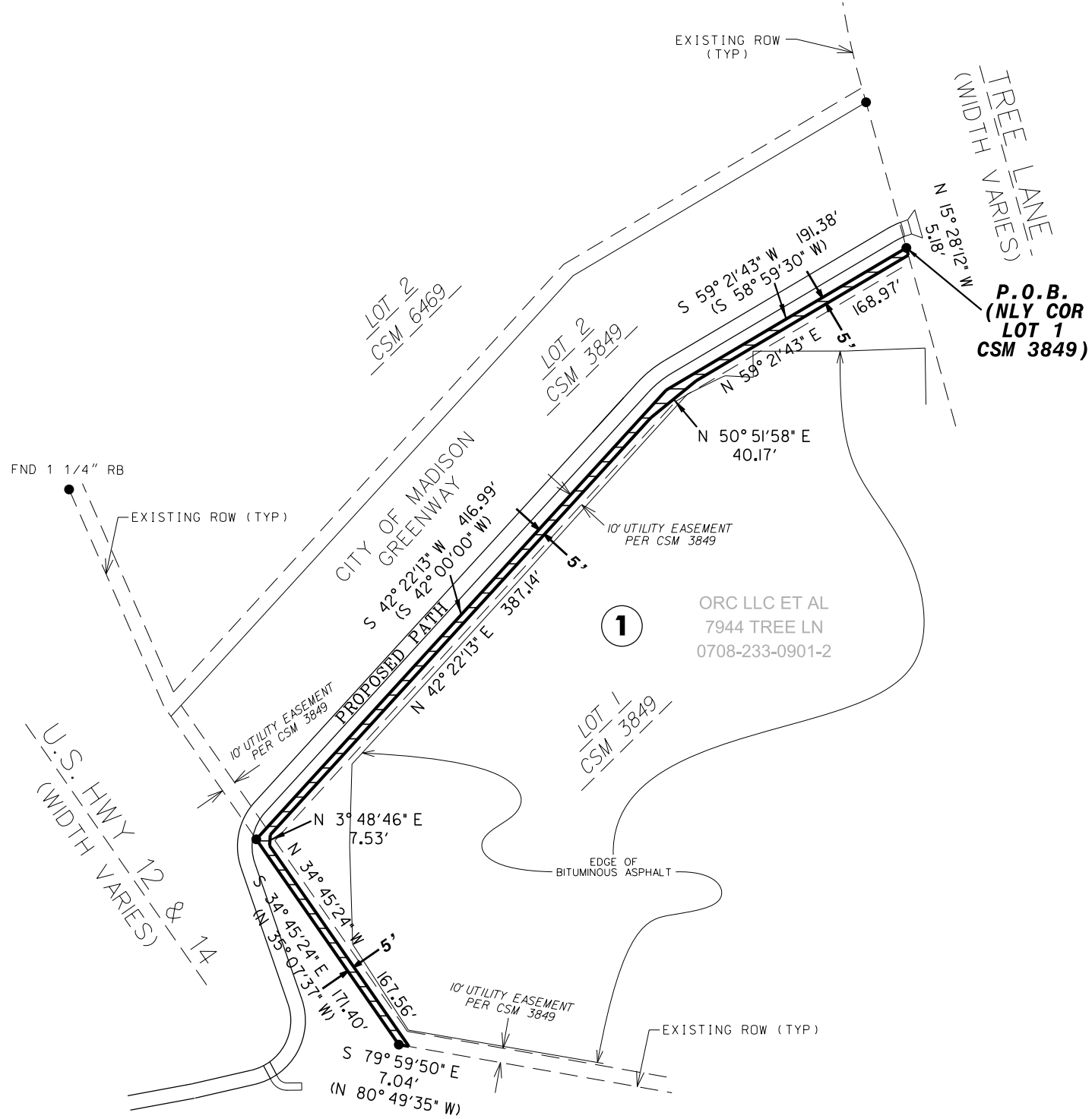
WCCS DANE ZONE
S LINE OF THE SW 1/4, SEC 23, T7N-R8E
BEARS: N 89° 09' 46" E, 2654.21'



SCALE: 1"=100 FEET



GRAPHIC SCALE (feet)



RELOCATION ORDER APPROVED
BY THE COMMON COUNCIL:

CITY CLERK

DATE

RELOCATION ORDER APPROVED
BY THE BOARD OF PUBLIC WORKS:

EXECUTIVE SECRETARY

DATE

RELOCATION ORDER APPROVED
BY THE PLAN COMMISSION:

EXECUTIVE SECRETARY

DATE

SCHEDULE OF INTERESTS REQUIRED

PARCEL #	OWNER NAME	TLE AREA REQUIRED	TEMPORARY RIGHT OF ENTRY	RECORDED DOC NO.
①	ORC LLC DABIDA LLC, A FLORIDA LLC GMAIN LLC RMAIN LLC	3,956 SQ FT 0.091 ACRES		

**CITY OF MADISON
RELOCATION ORDER**

"PLAT OF LAND INTERESTS REQUIRED FOR THE CONSTRUCTION OF IMPROVEMENTS FOR A BIKE-PED PATH", PART OF LOT 1, CSM 3849, BEING LOCATED IN THE SW 1/4 OF THE SW 1/4, OF SEC 23, T 7 N, R 8 E, CITY OF MADISON, DANE COUNTY, WI.

CITY ENGINEERING DIVISION
PROJECT NO. Munis 10289 (53W0861)
REAL ESTATE PROJECT NO. 10389
COUNTY CLERK FILE NO. _____

JUNE 25, 2015 djs
REV.