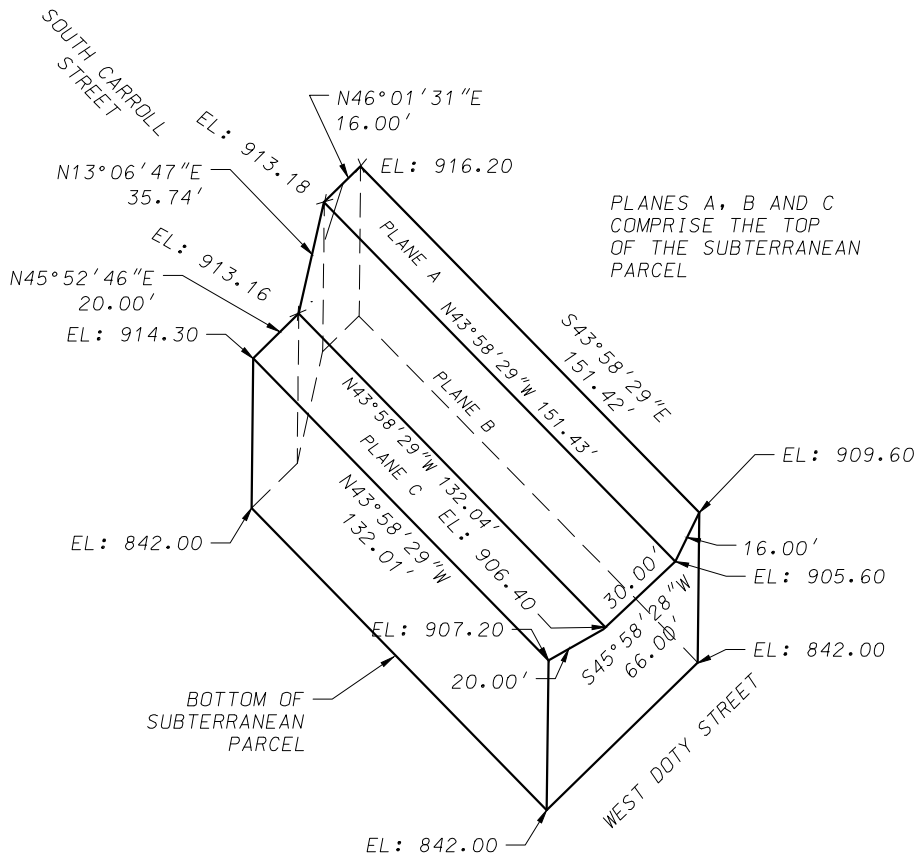


EXHIBIT "C"



SUBTERRANEAN PARCEL DETAIL



BEARINGS ARE BASED UPON
THE WISCONSIN COUNTY
COORDINATE SYSTEM, DANE
ZONE, THE WEST LINE OF
THE NW1/4 OF SEC. 24-7-9
BEARS S00°54'03"W

60
Scale 1" = 60'

D'ONOFRIO KOTTKE AND ASSOCIATES, INC.
7530 Westward Way, Madison, WI 53717
Phone: 608.833.7530 • Fax: 608.833.1089
YOUR NATURAL RESOURCE FOR LAND DEVELOPMENT