




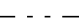
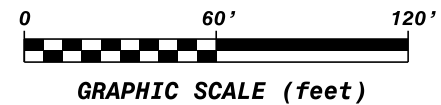
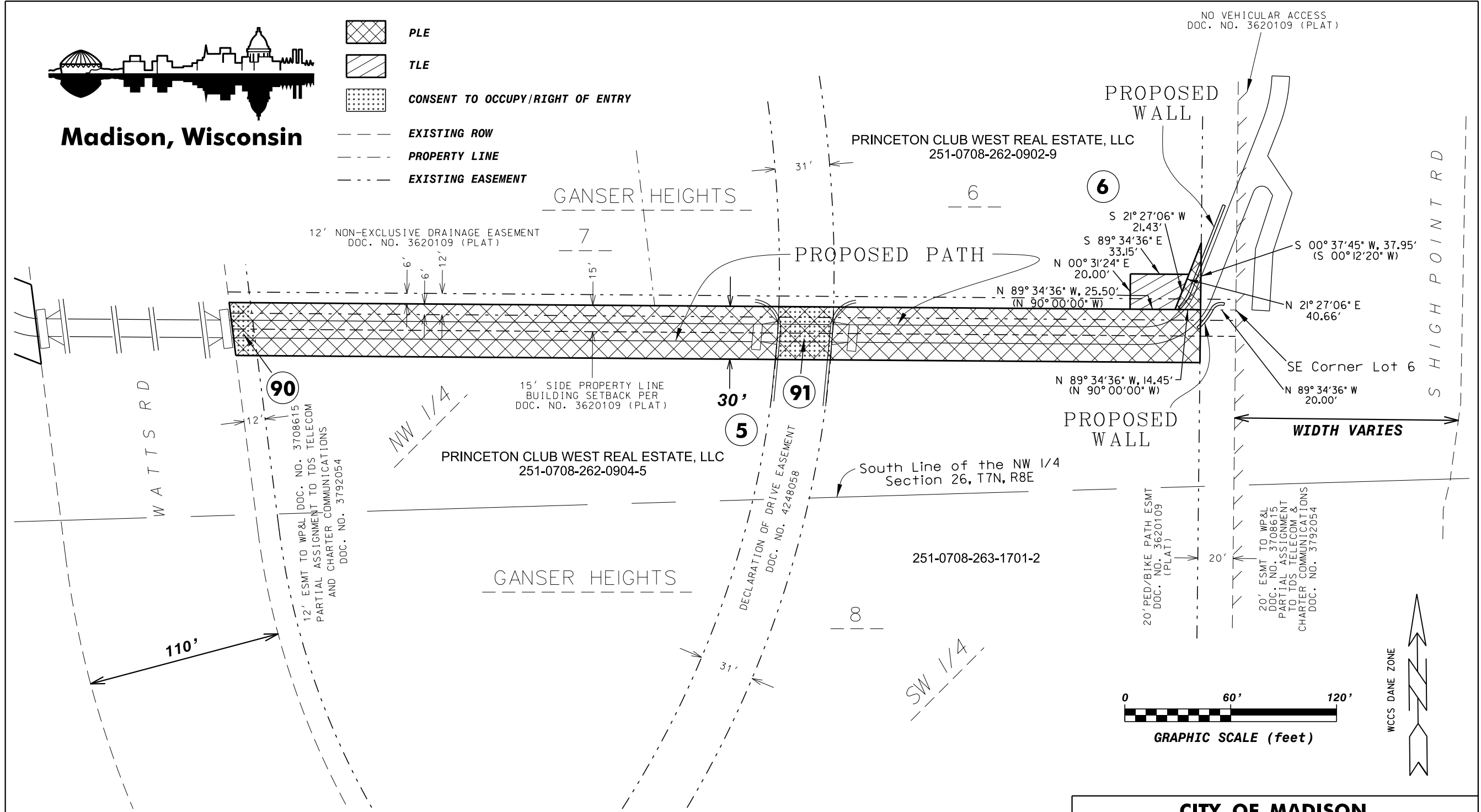




Madison, Wisconsin

-  PLE
-  TLE
-  CONSENT TO OCCUPY/RIGHT OF ENTRY
-  EXISTING ROW
-  PROPERTY LINE
-  EXISTING EASEMENT



SHEET 1 OF 2

RELOCATION ORDER APPROVED BY THE COMMON COUNCIL:		RELOCATION ORDER APPROVED BY THE BOARD OF PUBLIC WORKS:		RELOCATION ORDER APPROVED BY THE PLAN COMMISSION:	
CITY CLERK	DATE	EXECUTIVE SECRETARY	DATE	EXECUTIVE SECRETARY	DATE

**CITY OF MADISON
RELOCATION ORDER**

"PLAT OF LAND INTERESTS REQUIRED FOR THE CONSTRUCTION AND MAINTENANCE OF IMPROVEMENTS FOR A PUBLIC PATH", LOCATED IN PART OF THE SW 1/4 OF THE NW 1/4, OF SEC 26, T 7 N, R 8 E, CITY OF MADISON, DANE COUNTY, WISCONSIN.

CITY ENGINEERING DIVISION
PROJECT NO. 10531
REAL ESTATE MASTER PROJECT NO. 10721

FEBRUARY 4, 2015 djs
REV. FEBRUARY 17, 2015 djs