



MADISON'S equitable FUTURE

Racial Equity Social Justice Initiative

Melissa Gombar
Department of Civil Rights

Equity



Equity is **just** and **fair** inclusion into a society in which all, including all racial and ethnic groups, can participate, prosper, and reach their full potential. Equity gives all people a just and fair shot in life despite historic patterns of racial and economic exclusion.

www.policylink.org



Justified anger: Rev. Alex Gee says Madison is failing its African-American community



Sites Writers Opinion Data About Weather Communities Get It CarSou

Featured The real Mary Burke • 'Driven to act,' by Michael Johnson • The Changing Face of Madison • 'Justified

Home / Cap Times / News

Paul Fanlund: This time, the city's focus on racial issues feels different

Print E-mail Share Facebook Twitter Respond

go • By Paul Fanlund | The Capital Times



I started to turn on my mic at the panel discussion got word to hold off because far away, were just entering

It was raining, there were and still the crowd exceeded the venue's capacity by about 70. Those last to arrive watched through glass, aided by loudspeakers. About 10 to 15 percent of the attendees were African

More than 500 people packed First an Society Thursday night for her Apart: Talking Across the Divide," featuring eight panelists R's Keith Woods as moderator.

Large Photo

No state worse than Wisconsin for black children, says new national study

Capital Times | mivey@madison.com (85) Comments

African-American children seeking a better future, no books worse than Wisconsin.

national report shows that children of color face us barriers to educational and financial achievement Wisconsin ranking last in the disparity between children and their non-white peers.

SOCIALISTWORKER.org

The most racist city in the U.S.?

Sarah Blaskey and Phil Gasper report on a new study that shows the pernicious effects of racism as it afflicts African Americans in liberal Madison, Wis.

October 31, 2013
MADISON, WIS., has a reputation as one of the most liberal cities in the country. It is also possibly the most racially unequal.

In early October, Race to Equity: Madison-based initiative

RACE TO EQUITY

A Baseline Report on the State of Racial Disparities in Dane County



STATE JOURNAL

Trending Frank Kaminsky's 43 points • Food fight erupts at grocery store • Madison winter parking violation

Home / Top News Summary / Local News

'Alarming' racial disparities continue to plague Dane County

DANE COUNTY

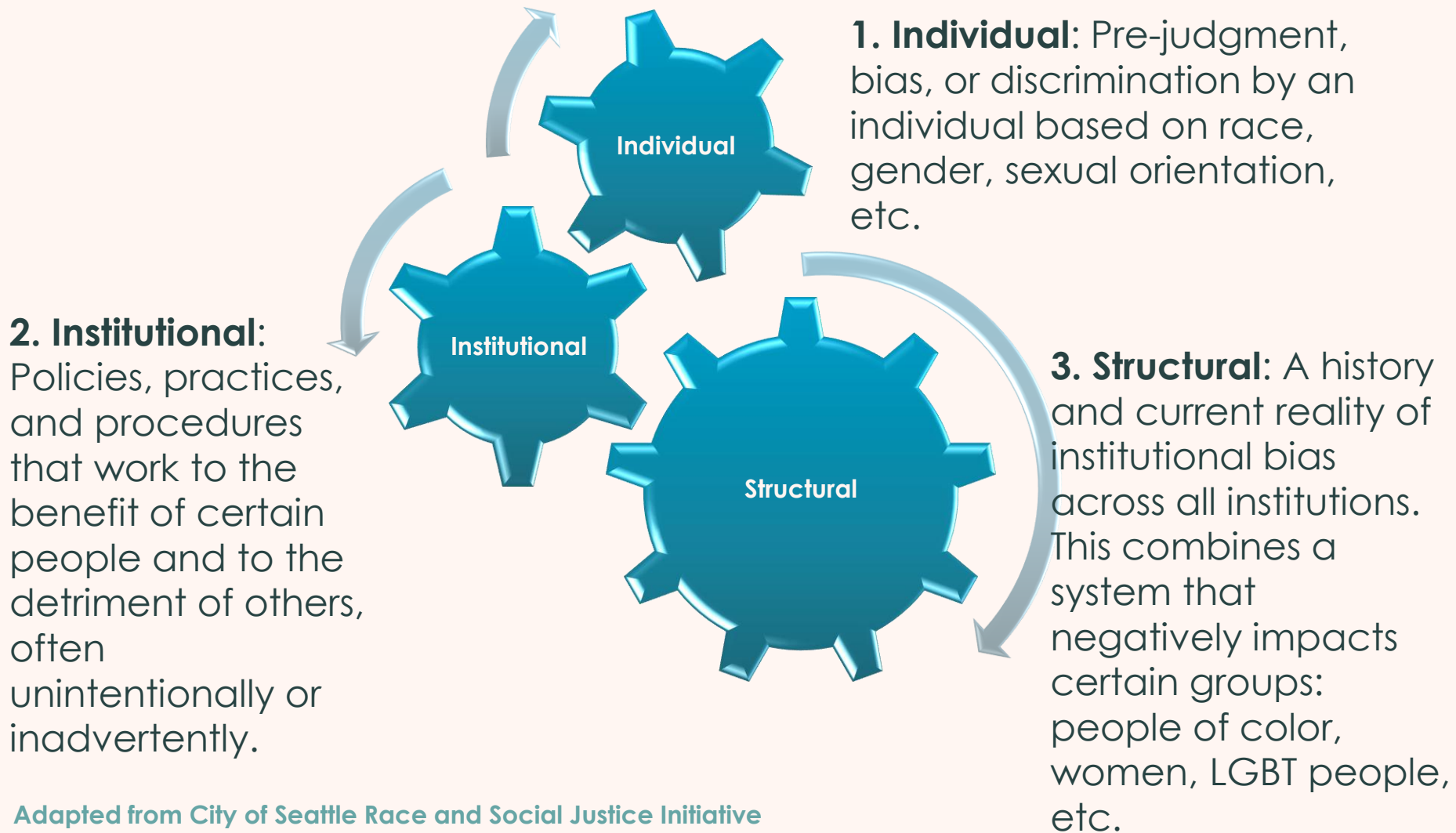
MAYOR'S BLOG

MAYOR SOGLIN'S BLOG

RACIAL DISPARITIES AND THE RACE TO EQUITY PROJECT
October 2, 2013 4:12 PM

The Wisconsin Council on Children and Families has completed its much awaited report [Race to Equity: A Baseline Report on the State of Racial Disparities in Dane County](#). The report confirms we have a lot of work to improve our community for everyone.

The Machine



Heart and sole: Detroiter walks 21 miles in work commute

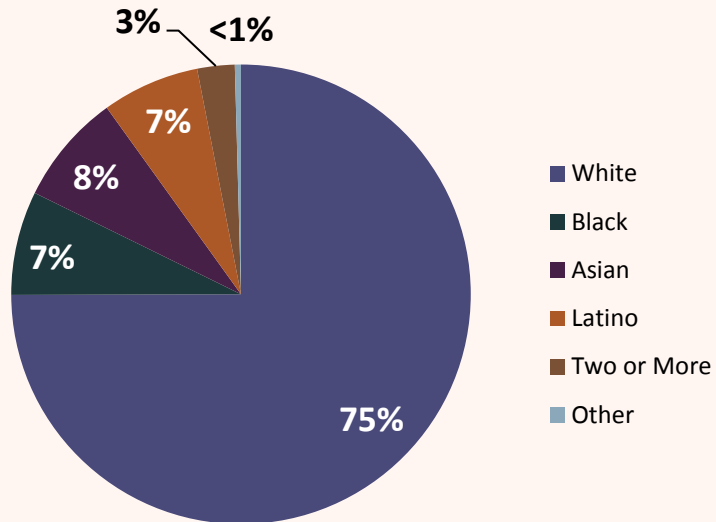


Detroit resident James Robertson, 56, of Detroit talks about his journey walking 21 miles a day to work and back. Ryan Garza/Detroit Free Press

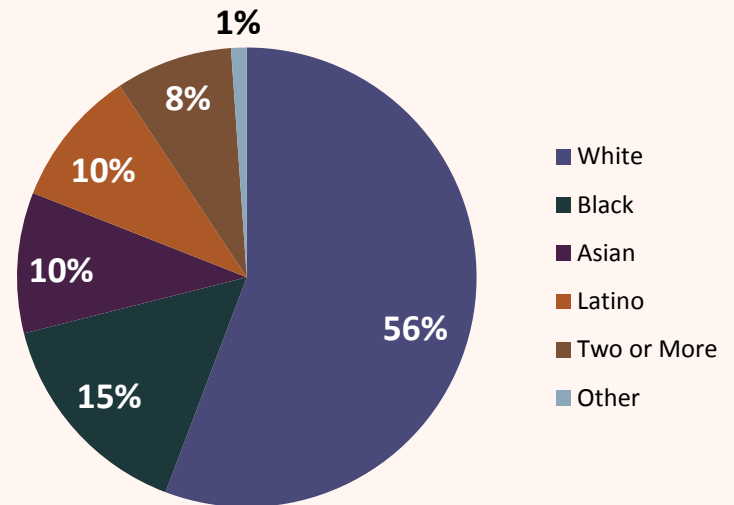


**How is the City of
Madison working
toward equity?**

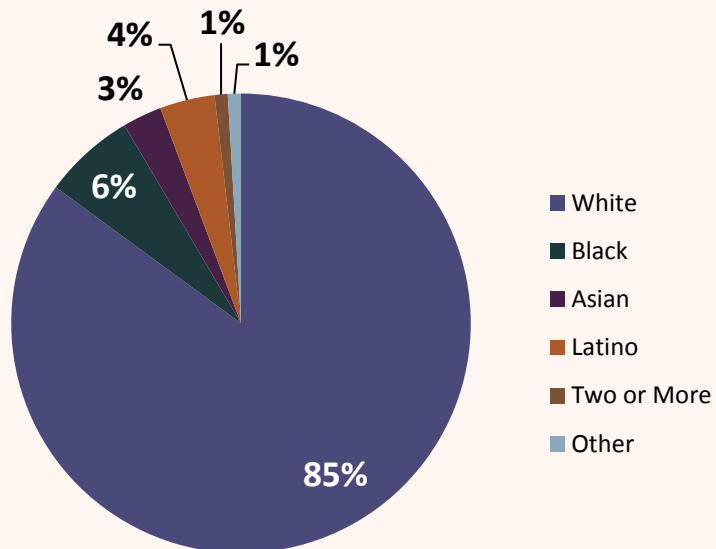
Total Madison Population



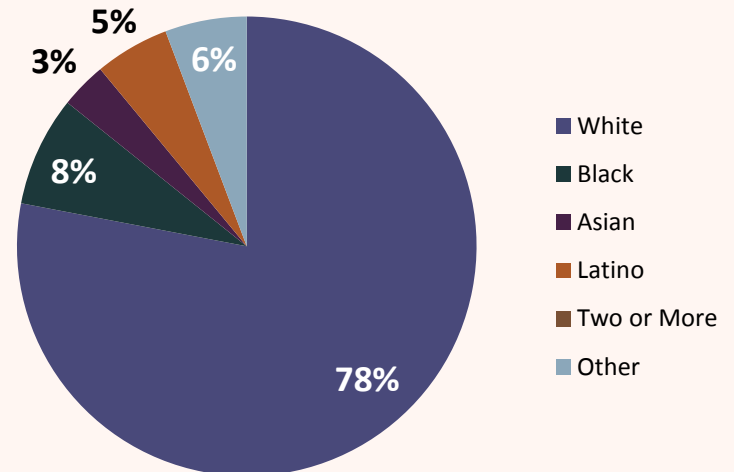
Under 18 Madison Population



City Committees



2013 City New Hires



Racial Equity & Social Justice Initiative Goals and Recommendations



Equity in City
Operations



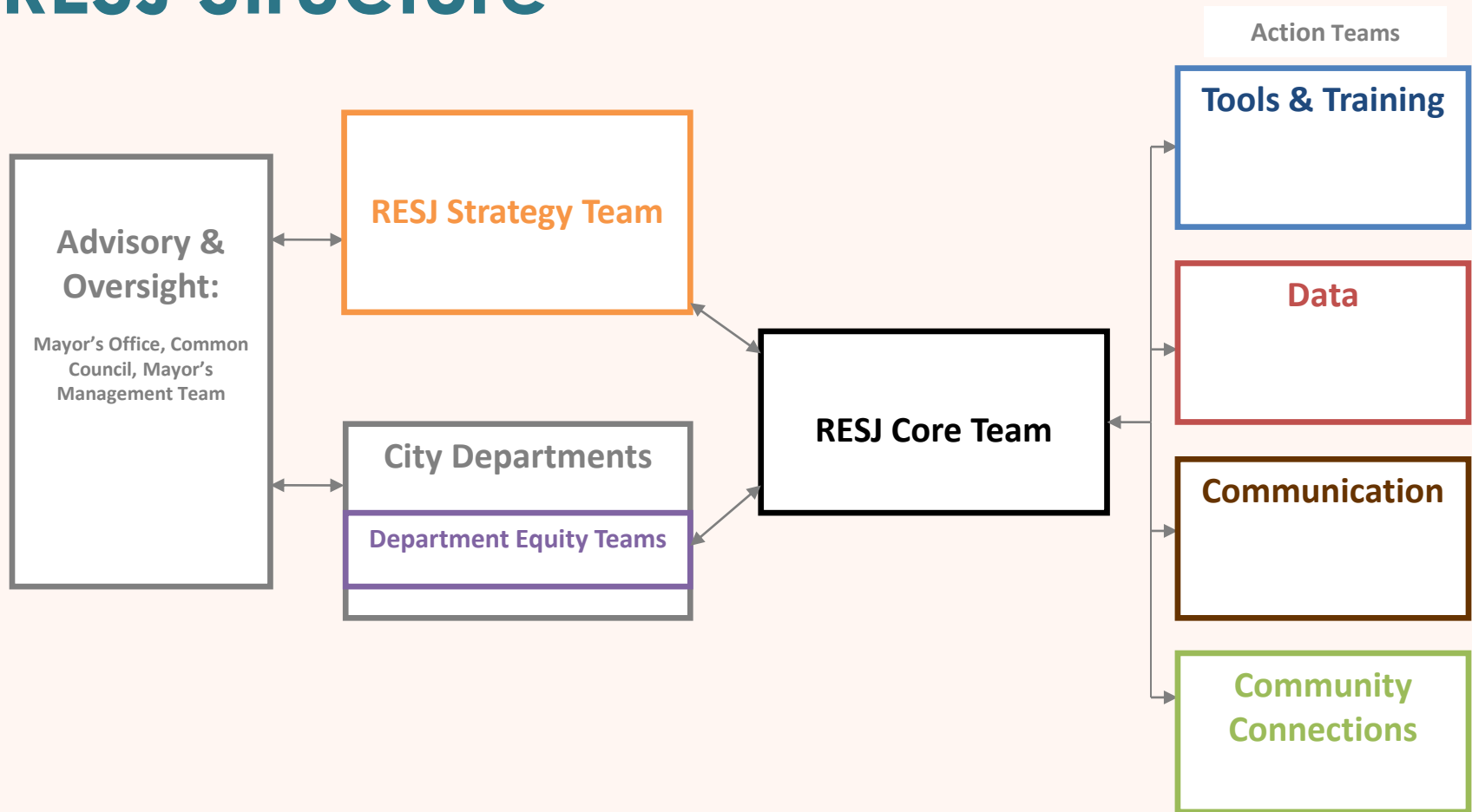
Equity in City
Policies and
Budgets



Equity in the
Community



RESJ Structure



RESJ: Early Progress



- RESJ representation in most City agencies
- Resources & tools:
- Five pilot projects using RESJ analysis tools
- Communicating with community partners

Racial Equity Tools

- Considers race explicitly
- Includes voices of people most affected
- Considers unintended consequences
- Routinely incorporates above questions





Racial Equity Tools

- To identify root causes of existing inequities
- To understand inequitable impacts of current policies and programs
- To develop new
 - policies
 - budgets
 - plans
 - partnerships

Racial Equity and Social Justice Initiative

Best Practices: Racial Equity Impact Analysis



Is:	Is NOT:
A systematic examination of likely impacts of decisions, policies, programs, practices and budgets on racial and ethnic groups or low-income populations	The "answer"
Used to minimize adverse consequences, prevent institutional racism and identify new options to remedy existing inequities	To be used for political or professional gain
An intentional pause	To stop a process or slow it down beyond recognition
Best used early in the process	Only applicable at the beginning and can be used to evaluate ongoing issues or programs
To be conducted with a variety of perspectives and stakeholders whenever possible	The only way to engage stakeholders
A way to raise the voice of traditionally marginalized communities	A way to create token representation in decisions
A way to raise awareness of racial and social justice issues in the community	A guarantee that decision makers will follow the recommendations

Best Practices

- Identify groups and individuals most likely to be impacted by the decision, policy, program, practice or budget. Find ways to involve them in the analysis.
- The analysis can be conducted in a variety of ways. Some examples include:
 - facilitated, full-group discussion
 - one-on-one conversations
 - small group meetings
- Create accountability by sharing the analysis widely with stakeholders, decision makers and the public. Be clear about how the process occurred, including who asked for the analysis, who participated, and identified missing elements such as data or stakeholder input.
- This is not a prescriptive or linear process. Adapt it to your needs and reach out for technical assistance as needed.

City of Madison Tool



WHAT

What is the issue being analyzed, and what are some of the main concerns associated with it?

What existing policies influence this situation? How might they create disproportionate impacts on communities of color and/or low-income populations?

What do available data tell you about this issue? (See [X](#) for guidance on data sources)

What data are unavailable or missing?

Which focus area(s) will the issue or program primarily impact? (See [X](#) for examples and guidance)

Please add any comments regarding the specific impacts on each area:

- | | |
|---|--|
| <input type="checkbox"/> Community/Civic Engagement | <input type="checkbox"/> Food Access & Affordability |
| <input type="checkbox"/> Criminal Justice | <input type="checkbox"/> Government Practices |
| <input type="checkbox"/> Early Childhood | <input type="checkbox"/> Health |
| <input type="checkbox"/> Economic Development | <input type="checkbox"/> Housing |
| <input type="checkbox"/> Education | <input type="checkbox"/> Planning & Development |
| <input type="checkbox"/> Employment | <input type="checkbox"/> Service Equity |
| <input type="checkbox"/> Environment | <input type="checkbox"/> Transportation |

☐ Other (please describe)

Comments:

WHERE

Are there impacts on geographic areas? (Select all that apply)

- | | |
|---|--|
| <input type="checkbox"/> All Madison neighborhoods | <input type="checkbox"/> Park Edge/Park Ridge |
| <input type="checkbox"/> Allied Drive | <input type="checkbox"/> Southside |
| <input type="checkbox"/> Balsam/Russet | <input type="checkbox"/> East Madison (general) |
| <input type="checkbox"/> Brentwood/Northport Corridor | <input type="checkbox"/> North Madison (general) |
| <input type="checkbox"/> Darbo/Worthington | <input type="checkbox"/> West Madison (general) |
| <input type="checkbox"/> Hammersley/Theresa | <input type="checkbox"/> Downtown/Campus |
| <input type="checkbox"/> Leopold/Arbor Hills | <input type="checkbox"/> Dane County (outside Madison) |
| <input type="checkbox"/> Owl Creek | <input type="checkbox"/> Outside Dane County |

Comments:

WHO

How have you involved community members and stakeholders?

(See [X](#) for guidance on identifying stakeholders and responding to the community)

What individuals or groups could be impacted by this issue? Who would benefit? Who would be burdened? Are there potential disproportionate impacts on communities of color or low-income communities?

What are the racial and socioeconomic demographics of those living in the area and/or impacted by the issue?

What input have you received from those who would be impacted and how did you gather this information? Specify sources of comments and other input.

WHY

What are the root causes or factors creating any racial or social inequities associated with this issue? (Examples: Bias in process; Lack of access or barriers; Lack of inclusive engagement)

What are potential unintended consequences? What benefits or burdens may result? (Specifically consider social, economic, health and environmental impacts)

What identified community needs are being met or ignored in this issue or decision?

HOW: RECOMMENDATIONS SECTION

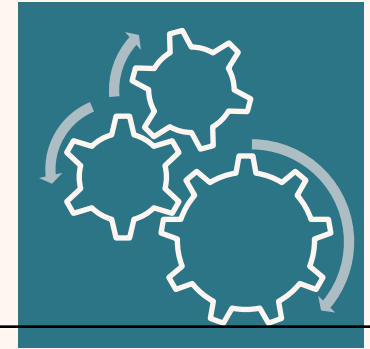
Describe recommended strategies to address disparate or inequitable impacts (Program, policy, partnership and/or budget/fiscal strategies):

What steps will need to be taken for these recommendations to move forward?

Who is accountable for this decision?

How will those impacted by this issue be informed of progress and impacts over time?

Community Engagement



Levels of Engagement				
City Informs City of Madison initiates an effort, coordinates with departments and uses a variety of channels to inform community to take action	City Consults City of Madison gathers information from the community to inform city-led projects	City engages in dialogue City of Madison engages community members to shape city priorities and plans	City and community work together Community and City of Madison share in decision-making to co-create solutions together	Community directs action Community initiates and directs strategy and action with participation and technical assistance from the City of Madison
Characteristics of Engagement				
<ul style="list-style-type: none"> Primarily one-way channel of communication One interaction Term-limited to event Addresses immediate need of City and community 	<ul style="list-style-type: none"> Primarily one-way channel of communication One to multiple interactions Short to medium-term Shapes and informs city projects 	<ul style="list-style-type: none"> Two-way channel of communication Multiple interactions Medium to long-term Advancement of solutions to complex problems 	<ul style="list-style-type: none"> Two-way channel of communication Multiple interactions Medium to long-term Advancement of solutions to complex problems 	<ul style="list-style-type: none"> Two-way channel of communication Multiple interactions Medium to long-term Advancement of solutions to complex problems
Strategies				
Media releases, brochures, pamphlets, outreach to vulnerable populations, ethnic media contacts, translated information, staff outreach to residents, new and social media	Focus groups, interviews, community surveys	Forums, advisory boards, stakeholder involvement, coalitions, policy development and advocacy, including legislative briefings and testimony, workshops, community-wide events	Co-led community meetings, advisory boards, coalitions and partnerships, policy development and advocacy, including legislative briefings and testimony	Community-led planning efforts, community-hosted forums, collaborative partnerships, coalitions, policy development and advocacy, including legislative briefings and testimony



Questions?

