



URBAN DESIGN COMMISSION APPLICATION CITY OF MADISON

This form may also be completed online at:

<http://www.cityofmadison.com/planning/documents/UDCapplication.pdf>

215 Martin Luther King Jr. Blvd; Room LL-100
PO Box 2985; Madison, Wisconsin 53701-2985
Phone: 608.266.4635 | Facsimile: 608.267.8739

Please complete all sections of the application, including the desired meeting date and the type of action requested.

Date Submitted: December 17, 2014	<input type="checkbox"/> Informational Presentation
UDC Meeting Date: February 11, 2015	<input checked="" type="checkbox"/> Initial Approval
Combined Schedule Plan Commission Date (if applicable): February 23, 2015	<input checked="" type="checkbox"/> Final Approval

1. Project Address: 3825 East Washington Avenue
Project Title (if any): Erik's bikes - Skis - Boards

2. This is an application for (Check all that apply to this UDC application):

☒ New Development ☐ Alteration to an Existing or Previously-Approved Development

A. Project Type:

- ☒ Project in an Urban Design District* (public hearing-\$300 fee)
☐ Project in the Downtown Core District (DC) or Urban Mixed-Use District (UMX) (\$150 fee, Minor Exterior Alterations)
☐ Suburban Employment Center (SEC) or Campus Institutional District (CI) or Employment Campus District (EC)
☐ Planned Development (PD)
☐ General Development Plan (GDP)
☐ Specific Implementation Plan (SIP)
☐ Planned Multi-Use Site or Planned Residential Complex

B. Signage:

- ☒ Comprehensive Design Review* (public hearing-\$300 fee) ☐ Street Graphics Variance* (public hearing-\$300 fee)
☐ Signage Exception(s) in an Urban Design District (public hearing-\$300 fee)

C. Other:

☐ Please specify: _____

3. Applicant, Agent & Property Owner Information:

Applicant Name: John Seamon
Street Address: 901 Deming Way
Telephone: (608) 664.3550 Fax: ()

Company: Iconica
City/State: Madison, WI Zip: 53717
Email: john.seamon@iconicacreatives.com

Project Contact Person: Same as above
Street Address: _____
Telephone: () Fax: ()

Company: _____
City/State: _____ Zip: _____
Email: _____


Project Owner (if not applicant): Eric Saltvold
Street Address: 9201 Penn Ave. South
Telephone: () Fax: ()

City/State: Bloomington, MN Zip: 55431
Email: _____

4. Applicant Declarations:

A. Prior to submitting this application, the applicant is required to discuss the proposed project with Urban Design Commission staff. This application was discussed with UDC on 12.4.2014.
(name of staff person) (date of meeting)

B. The applicant attests that all required materials are included in this submittal and understands that if any required information is not provided by the application deadline, the application will not be placed on an Urban Design Commission agenda for consideration.

Name of Applicant John Seamon Relationship to Property Consultant
Authorized Signature  Date 12.16.2014

POS SALES RECEIPT

Receipt # 161120
 Payment Date: 12/17/14
 Household #: 999999999

City of Madison - Inspection Unit
 City of Madison
 215 Martin Luther King Jr. Blvd.
 Madison WI 53710
 Phone: (608)266-4551

City of Madison

POS Transaction Details

Misc: Cond. Use, 12
 Quantity: 1

<u>Fees + Tax</u>	<u>Discount</u>	<u>Amount Due</u>
600.00	0.00	0.00

Processed on 12/17/14 @ 12:06:56 by POS

FEEs CHARGED ON NEW LINE ITEMS (+)	600.00
DISCOUNT APPLIED AGAINST THESE FEES (-)	0.00
TAX CHARGED ON NEW FEES (+)	0.00

NEW AMOUNT DUE	600.00
-----------------------	---------------

PREVIOUS NET HOUSEHOLD BALANCE	0.00
--------------------------------	------

TOTAL DUE	600.00
------------------	---------------

NEW FEES PAID ON THIS RECEIPT (-)	600.00
-----------------------------------	--------

TOTAL PAID	600.00
-------------------	---------------

NEW NET HOUSEHOLD BALANCE	0.00
---------------------------	------

Payment of ==> 600.00 Made By ==> CHECK With Reference ==> 90080

Remittance Advice

Page 1 of 1

Check: 90080
Date: 12/17/14
Amount: 600.00

Paid by: ICONICA INC
Paid to: CITY OF MADISON

Our Account #:
Vendor Code: MADIPLAN

Inv. Date	Invoice No.	Job Number	Inv. Amount	Discount	Amount Paid	Retention	Remarks
12/16/14	2014-12-16 PLAN COM	20140810	600.00	0.00	600.00	0.00	PLAN COMMISSION - ERIK'S
Check Totals			600.00	0.00	600.00	0.00	

SLIM12N

TYPE - C

12, 18 and 26 Watt SLIM wallpacks are ultra efficient and deliver impressive light distribution with a compact low-profile design that's super easy to install as a downlight or uplight.

Color: Bronze

Weight: 4.5 lbs

LED Info

Watts: 12W
 Color Temp: 4000K (Neutral)
 Color Accuracy: 82
 L70 Lifespan: 100000
 LM79 Lumens: 1372
 Efficacy: 99 LPW

Driver Info

Type: Constant Current
 120V: 0.12A
 208V: 0.08A
 240V: 0.07A
 277V: 0.06A
 Input Watts: 14W
 Efficiency: 86%

Technical Specifications

UL Listing:

Suitable for wet locations. Suitable for mounting within 1.2m (4ft) of the ground.

IP Rating:

Ingress Protection rating of IP66 for dust and water.

LED:

Multi-chip, long-life LED.

Lifespan:

100,000-hour LED lifespan based on IES LM-80 results and TM-21 calculations.

Driver:

Constant Current, Class 2, 100-277V, 50/60 Hz., 4KV surge protection, 350mA, 100-240VAC 0.3-0.15 Amps, 277VAC 0.15Amps, Power Factor 99%.

THD:

10.1% at 120V

Cold Weather Starting:

The minimum starting temperature is -40°F/-40°C.

Ambient Temperature:

Suitable for use in 40°C (104°F) ambient temperatures.

Thermal Management:

Superior heat sinking with internal Air-Flow fins.

Housing:

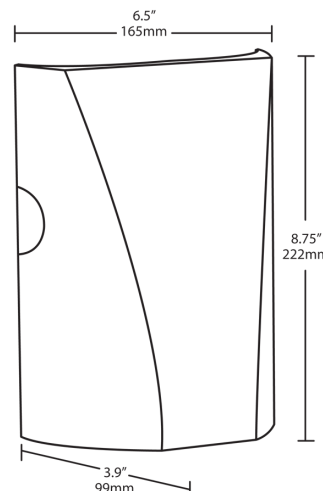
Precision die-cast aluminum housing.

Mounting:

Heavy-duty mounting bracket with hinged housing for easy installation.

Recommended Mounting Height:

Up to 8 ft.



HID Replacement Range:

The SLIM12 can be used to replace 70W MH based on delivered lumens.

Lens:

Tempered glass lens.

Reflector:

Specular thermoplastic.

Gaskets:

High-temperature silicone.

Finish:

Our environmentally friendly polyester powder coatings are formulated for high-durability and long-lasting color, and contains no VOC or toxic heavy metals.

ADA Compliant:

SLIM™ is ADA Compliant.

DLC Listed:

This product is on the Design Lights Consortium (DLC) Qualified Products List and is eligible for rebates from DLC Member Utilities.

Dark Sky Approved:

The International Dark Sky Association has approved this product as a full cutoff, fully shielded luminaire.

Color Consistency:

3-step MacAdam Ellipse binning to achieve consistent fixture-to-fixture color.

Color Stability:

LED color temperature is warranted to shift no more than 200K in CCT over a 5 year period.



Tech Help Line: 888 RAB-1000

Email: sales@rabweb.com

On the web at: www.rabweb.com

Copyright ©2014 RAB Lighting Inc. All Rights Reserved

Note: Specifications are subject to change without notice

Page 1 of 2

SLIM12N - continued

Color Uniformity:

RAB's range of CCT (Correlated Color Temperature) follows the guidelines for the American National Standard for Specifications for the Chromaticity of Solid State Lighting (SSL) Products, ANSI C78.377-2011.

Green Technology:

Mercury and UV free, and RoHS compliant.

California Title 24:

SLIM12 complies with 2013 California Title 24 building and electrical codes as a residential outdoor fixture. See SLIM12/PC for a model that complies as a commercial outdoor non-pole-mounted fixture ≤ 30 Watts.

IESNA LM-79 & LM-80 Testing:

RAB LED luminaires have been tested by an independent laboratory in accordance with IESNA LM-79 and LM-80, and have received the Department of Energy "Lighting Facts" label.

Patents:

The design of the SLIM™ is protected by patents in U.S. Pat D681,864, and pending patents in Canada, China, Taiwan and Mexico.

Country of Origin:

Designed by RAB in New Jersey and assembled in the USA by RAB's IBEW Local 3 workers.

Buy American Act Compliant:

This product is a COTS item manufactured in the United States, and is compliant with the Buy American Act.

Recovery Act (ARRA) Compliant:

This product complies with the 52.225-21 "Required Use of American Iron, Steel, and Manufactured Goods-- Buy American Act-- Construction Materials (October 2010).

Trade Agreements Act Compliant:

This product is a COTS item manufactured in the United States, and is compliant with the Trade Agreements Act.

GSA Schedule:

Suitable in accordance with FAR Subpart 25.4.





D-Series Size 1 LED Area Luminaire

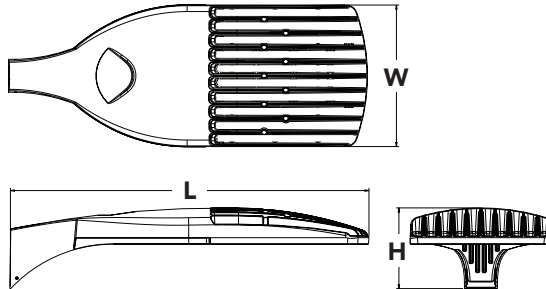


d^{series}

TYPE - A&B

Specifications

EPA:	1.2 ft ² (0.11 m ²)
Length:	33" (83.8 cm)
Width:	13" (33.0 cm)
Height:	7-1/2" (19.0 cm)
Weight (max):	27 lbs (12.2 kg)



Catalog
Number

Notes

Type

Hit the Tab key or mouse over the page to see all interactive elements.

Introduction

The modern styling of the D-Series is striking yet unobtrusive - making a bold, progressive statement even as it blends seamlessly with its environment.

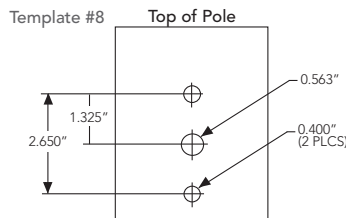
The D-Series distills the benefits of the latest in LED technology into a high performance, high efficacy, long-life luminaire. The outstanding photometric performance results in sites with excellent uniformity, greater pole spacing and lower power density. It is ideal for replacing 100 – 400W metal halide in pedestrian and area lighting applications with typical energy savings of 65% and expected service life of over 100,000 hours.

Ordering Information

EXAMPLE: DSX1 LED 60C 1000 40K T3M MVOLT SPA DDBXD

DSX1 LED																							
Series	LEDs	Drive current		Color temperature		Distribution		Voltage	Mounting	Control options		Other options		Finish <i>(required)</i>									
DSX1 LED	Forward optics	530	530 mA	30K	3000 K (80 CRI min.)	T1S	Type I short	MVOLT ³	Shipped included	Shipped installed	Shipped installed	HS	House-side shield ¹⁴	DDBXD	Dark bronze								
	30C 30 LEDs (one engine)	700	700 mA	40K	4000 K (70 CRI min.)	T2S	Type II short	120 ³						SPA	Square pole mounting	PER	NEMA twist-lock receptacle only (no controls) ⁷	DBLXD	Black				
	40C 40 LEDs (two engines)	1000	1000 mA (1 A)	50K	5000 K (70 CRI)	T2M	Type II medium	208 ³						RPA	Round pole mounting	DMG	0-10V dimming driver (no controls) ⁸	DNAXD	Natural aluminum				
	60C 60 LEDs (two engines)			AMBPC	Amber phosphor converted ²	T3S	Type III short	240 ³						WBA	Wall bracket	DCR	Dimmable and controllable via ROAM [®] (no controls) ⁹	DTB	Utility terminal block ¹⁵	DWHXD	White		
						T3M	Type III medium	277 ³										SPUMBA	Square pole universal mounting adaptor ⁵	DS	Dual switching ^{10,11}	DDTDX	Textured dark bronze
	Rotated optics ¹					T4M	Type IV medium	347 ⁴	Shipped separately ⁶	RPUMBA	Round pole universal mounting adaptor ⁵	PIR	Motion sensor, 8-15' mounting height ¹²	SF	Single fuse (120, 277, 347V) ¹⁶	DBLTXD	Textured black						
	60C 60 LEDs (two engines)					TFTM	Forward throw medium	480 ⁴						PIRH	Motion sensor, 15-30' mounting height ¹²	DF	Double fuse (208, 240, 480V) ¹⁶	DNATXD	Textured natural aluminum				
						T5VS	Type V very short							KMA8 DDBXD U	Mast arm mounting bracket adaptor (specify finish)	BL30	Bi-level switched dimming, 30% ^{11,13}	L90	Left rotated optics ¹⁷	DWHGXD	Textured white		
						T5S	Type V short																
						T5M	Type V medium																
					T5W	Type V wide																	

Drilling



DSX1 shares a unique drilling pattern with the AERIS™ family. Specify this drilling pattern when specifying poles, per the table below.

DM19AS	Single unit	DM29AS	2 at 90° *
DM28AS	2 at 180°	DM39AS	3 at 90° *
DM49AS	4 at 90° *	DM32AS	3 at 120° **

Example: SSA 20 4C DM19AS DDBXD

Visit Lithonia Lighting's POLES CENTRAL to see our wide selection of poles, accessories and educational tools.

*Round pole top must be 3.25" O.D. minimum.
**For round pole mounting (RPA) only.

Tenon Mounting Slipfitter **

Tenon O.D.	Single Unit	2 at 180°	2 at 90°	3 at 120°	3 at 90°	4 at 90°
2-3/8"	AST20-190	AST20-280	AST20-290	AST20-320	AST20-390	AST20-490
2-7/8"	AST25-190	AST25-280	AST25-290	AST25-320	AST25-390	AST25-490
4"	AST35-190	AST35-280	AST35-290	AST35-320	AST35-390	AST35-490

NOTES

- Rotated optics only available with 60C.
- AMBPC only available with 530mA or 700mA.
- MVOLT driver operates on any line voltage from 120-277V (50/60 Hz). Specify 120, 208, 240 or 277 options only when ordering with fusing (SF, DF options).
- Not available with single board, 530mA product (30C 530, or 60C 530 DS). Not available with DCR, BL30 or BL50.
- Available as a separate combination accessory: PUMBA (finish) U.
- Must be ordered as a separate accessory; see Accessories information. For use with 2-3/8" mast arm (not included).
- Photocell ordered and shipped as a separate line item from Acuity Brands Controls. See accessories. Not available with DS option.
- DMG option for 347v or 480v requires 1000mA
- Specifies a ROAM[®] enabled luminaire with 0-10V dimming capability; PER option required. Not available with 347 or 480V. Additional hardware and services required for ROAM[®] deployment; must be purchased separately. Call 1-800-442-6745 or email: sales@roamservices.net. N/A with BL30, BL50, DS, PIR or PIRH.
- Requires 40C or 60C. Provides 50/50 luminaire operation via two independent drivers on two separate circuits. N/A with PER, DCR, WTB, PIR, or PIRH.
- Requires an additional switched circuit.
- PIR specifies the SensorSwitch SBGR-10-ODP control; PIRH specifies the SensorSwitch SBGR-6-ODP control; see Motion Sensor Guide for details. Dimming driver standard. Not available with DS or DCR.
- Dimming driver standard. MVOLT only. Not available with DCR.
- Also available as a separate accessory; see Accessories information.
- WTB not available with DS.
- Single fuse (SF) requires 120, 277 or 347 voltage option. Double fuse (DF) requires 208, 240 or 480 voltage option.
- Available with 60 LEDs (60C option) only.
- Requires luminaire to be specified with PER option. Ordered and shipped as a separate line item from Acuity Brands Control.



Performance Data

Lumen Output

Lumen values are from photometric tests performed in accordance with IESNA LM-79-08. Data is considered to be representative of the configurations shown, within the tolerances allowed by Lighting Facts. Actual performance may differ as a result of end-user environment and application. Actual wattage may differ by +/- 8% when operating between 120-480V +/-10%. Contact factory for performance data on any configurations not shown here.

LEDs	Drive Current (mA)	System Watts	Dist. Type	30K (3000 K, 80 minimum CRI)					40K (4000 K, 70 minimum CRI)					50K (5000 K, 70 CRI)				
				Lumens	B	U	G	LPW	Lumens	B	U	G	LPW	Lumens	B	U	G	LPW
30C (30 LEDs)	700 mA	68 W	T1S	5,290	1	0	1	78	6,524	2	0	2	96	7,053	2	0	2	104
			T2S	5,540	1	0	1	81	6,833	2	0	2	100	7,387	2	0	2	109
			T2M	5,360	1	0	2	79	6,611	2	0	2	97	7,147	2	0	2	105
			T3S	5,479	1	0	1	81	6,757	1	0	2	99	7,305	2	0	2	107
			T3M	5,452	1	0	2	80	6,724	2	0	2	99	7,269	2	0	2	107
			T4M	5,461	1	0	2	80	6,736	2	0	2	99	7,282	2	0	2	107
			TFTM	5,378	1	0	2	79	6,633	1	0	2	98	7,171	1	0	2	105
			T5VS	5,708	2	0	0	84	7,040	3	0	0	104	7,611	3	0	1	112
			T5S	5,639	2	0	0	83	6,955	2	0	0	102	7,519	3	0	0	111
			T5M	5,710	3	0	1	84	7,042	3	0	1	104	7,613	3	0	2	112
	1000 mA	105 W	T5W	5,551	3	0	1	82	6,847	3	0	2	101	7,401	3	0	2	109
			T1S	7,229	2	0	2	69	9,168	2	0	2	87	9,874	2	0	2	94
			T2S	7,572	2	0	2	72	9,603	2	0	2	91	10,342	2	0	2	98
			T2M	7,325	2	0	2	70	9,291	2	0	2	88	10,005	2	0	3	95
			T3S	7,488	2	0	2	71	9,496	2	0	2	90	10,227	2	0	2	97
			T3M	7,451	2	0	2	71	9,450	2	0	2	90	10,177	2	0	2	97
			T4M	7,464	2	0	2	71	9,467	2	0	2	90	10,195	2	0	2	97
			TFTM	7,351	1	0	2	70	9,323	2	0	2	89	10,040	2	0	3	96
			T5VS	7,801	3	0	1	74	9,894	3	0	1	94	10,655	3	0	1	101
			T5S	7,803	3	0	2	74	9,774	3	0	1	93	10,526	3	0	1	100
			T5M	7,707	3	0	0	73	9,897	3	0	2	94	10,658	4	0	2	102
40C (40 LEDs)	700 mA	89 W	T5W	7,586	3	0	2	72	9,621	4	0	2	92	10,363	4	0	2	99
			T1S	6,876	2	0	2	77	8,639	2	0	2	97	9,345	2	0	2	105
			T2S	7,202	2	0	2	81	9,049	2	0	2	102	9,788	2	0	2	110
			T2M	6,968	2	0	2	78	8,755	2	0	2	98	9,469	2	0	3	106
			T3S	7,122	2	0	2	80	8,948	2	0	2	101	9,679	2	0	2	109
			T3M	7,088	2	0	2	80	8,905	2	0	2	100	9,632	2	0	2	108
			T4M	7,100	2	0	2	80	8,920	2	0	2	100	9,649	2	0	2	108
			TFTM	6,992	1	0	2	79	8,785	2	0	2	99	9,502	2	0	2	107
			T5VS	7,421	3	0	0	83	9,323	3	0	1	105	10,085	3	0	1	113
			T5S	7,331	2	0	0	82	9,210	3	0	1	103	9,962	3	0	1	112
	1000 mA	138 W	T5M	7,423	3	0	2	83	9,326	3	0	2	105	10,087	4	0	2	113
			T5W	7,216	3	0	2	81	9,066	4	0	2	102	9,807	4	0	2	110
			T1S	9,521	2	0	2	69	11,970	2	0	2	87	12,871	3	3	0	93
			T2S	9,972	2	0	2	72	12,558	3	0	3	91	13,481	3	0	3	98
			T2M	9,648	2	0	3	70	12,149	3	0	3	88	13,043	3	0	3	95
			T3S	9,862	2	0	2	71	12,418	2	0	2	90	13,331	2	0	2	97
			T3M	9,814	2	0	2	71	12,358	3	0	3	90	13,267	3	0	3	96
			T4M	9,831	2	0	2	71	12,379	2	0	3	90	13,290	2	0	3	96
			TFTM	9,681	2	0	2	70	12,191	2	0	3	88	13,087	2	0	3	95
			T5VS	10,275	3	0	1	74	12,937	3	0	1	94	13,890	4	0	1	101
			T5S	10,150	3	0	1	74	12,782	3	0	1	93	13,721	3	0	1	99
60C (60 LEDs)	700 mA	131 W	T5M	10,278	4	0	2	74	12,942	4	0	2	94	13,894	4	0	2	101
			T5W	9,991	4	0	2	72	12,582	4	0	2	91	13,507	4	0	2	98
			T1S	10,226	2	0	2	78	12,871	3	0	3	98	13,929	3	0	3	106
			T2S	10,711	2	0	2	82	13,481	3	0	3	103	14,589	3	0	3	111
			T2M	10,363	2	0	3	79	13,043	3	0	3	100	14,115	3	0	3	108
			T3S	10,592	2	0	2	81	13,331	2	0	2	102	14,427	3	0	3	110
			T3M	10,541	2	0	2	80	13,267	3	0	3	101	14,357	3	0	3	110
			T4M	10,559	2	0	2	81	13,290	2	0	3	101	14,382	3	0	3	110
			TFTM	10,398	2	0	3	79	13,087	2	0	3	100	14,163	2	0	3	108
			T5VS	11,036	3	0	1	84	13,890	4	0	4	106	15,032	4	0	1	115
	1000 mA	209 W	T5S	10,902	3	0	1	83	13,721	3	0	1	105	14,849	4	0	1	113
			T5M	11,039	4	0	2	84	13,894	4	0	2	106	15,036	4	0	2	115
			T5W	10,732	4	0	2	82	13,507	4	0	2	103	14,617	4	0	2	112
			T1S	14,017	3	0	3	67	17,632	3	0	3	84	19,007	3	0	3	91
			T2S	14,681	3	0	3	70	18,467	3	0	3	88	19,908	3	0	3	95
			T2M	14,204	3	0	3	68	17,867	3	0	3	85	19,260	3	0	3	92
			T3S	14,518	3	0	3	69	18,262	3	0	3	87	19,687	3	0	3	94
			T3M	14,448	3	0	3	69	18,173	3	0	4	87	19,591	3	0	4	94
			T4M	14,473	3	0	3	69	18,205	3	0	3	87	19,625	3	0	4	94
			TFTM	14,253	2	0	3	68	17,928	3	0	4	86	19,326	3	0	4	92
			T5VS	15,127	4	0	1	72	19,028	4	0	1	91	20,512	4	0	1	98
			T5S	14,943	4	0	1	71	18,797	4	0	1	90	20,263	4	0	1	97
			T5M	15,131	4	0	2	72	19,033	4	0	2	91	20,517	5	0	3	98
			T5W	14,710	4	0	2	70	18,503	5	0	3	89	19,946	5	0	3	95

Note: Available with phosphor-converted amber LED's (nomenclature AMBPC). These LED's produce light with 97+% >530 nm. Output can be calculated by applying a 0.7 factor to 4000 K lumen values and photometric files.



Performance Data

Lumen Ambient Temperature (LAT) Multipliers

Use these factors to determine relative lumen output for average ambient temperatures from 0-40°C (32-104°F).

Ambient		Lumen Multiplier
0°C	32°F	1.02
10°C	50°F	1.01
20°C	68°F	1.00
25°C	77°F	1.00
30°C	86°F	1.00
40°C	104°F	0.99

Projected LED Lumen Maintenance

Data references the extrapolated performance projections for the platforms noted in a **25°C ambient**, based on 10,000 hours of LED testing (tested per IESNA LM-80-08 and projected per IESNA TM-21-11).

To calculate LLF, use the lumen maintenance factor that corresponds to the desired number of operating hours below. For other lumen maintenance values, contact factory.

Operating Hours	0	25,000	50,000	100,000
Lumen Maintenance Factor	DSX1 LED 60C 1000			
	1.0	0.95	0.93	0.88
	DSX1 LED 60C 700			
	1.0	0.99	0.98	0.96

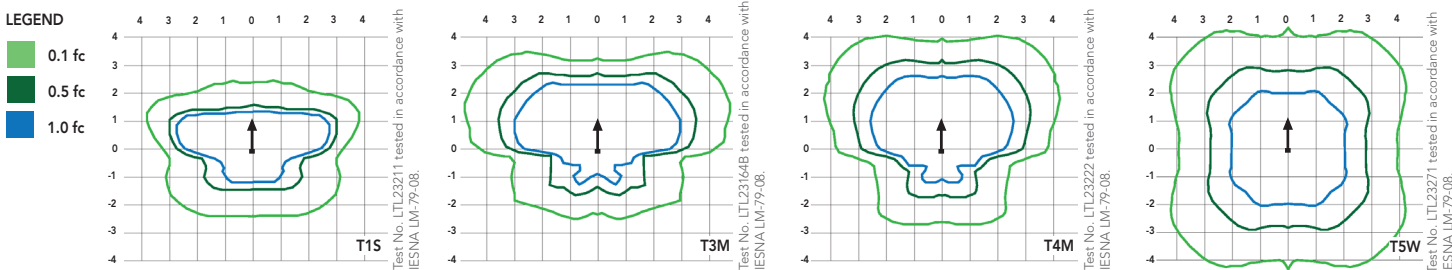
Electrical Load

Number of LEDs	Drive Current (mA)	System Watts	Current (A)					
			120	208	240	277	347	480
30	530	52	0.52	0.30	0.26	0.23	--	--
	700	68	0.68	0.39	0.34	0.30	0.24	0.17
	1000	105	1.03	0.59	0.51	0.45	0.36	0.26
40	530	68	0.67	0.39	0.34	0.29	0.23	0.17
	700	89	0.89	0.51	0.44	0.38	0.31	0.22
	1000	138	1.35	0.78	0.67	0.58	0.47	0.34
60	530	99	0.97	0.56	0.48	0.42	0.34	0.24
	700	131	1.29	0.74	0.65	0.56	0.45	0.32
	1000	209	1.98	1.14	0.99	0.86	0.69	0.50

Photometric Diagrams

To see complete photometric reports or download .ies files for this product, visit Lithonia Lighting's [D-Series Area Size 1 homepage](#).

Isofootcandle plots for the DSX1 LED 60C 1000 40K. Distances are in units of mounting height (20').



FEATURES & SPECIFICATIONS

INTENDED USE

The sleek design of the D-Series Size 1 reflects the embedded high performance LED technology. It is ideal for many commercial and municipal applications, such as parking lots, plazas, campuses, and streetscapes.

CONSTRUCTION

Single-piece die-cast aluminum housing has integral heat sink fins to optimize thermal management through conductive and convective cooling. Modular design allows for ease of maintenance and future light engine upgrades. The LED driver is mounted in direct contact with the casting to promote low operating temperature and long life. Housing is completely sealed against moisture and environmental contaminants (IP65). Low EPA (1.2 ft²) for optimized pole wind loading.

FINISH

Exterior parts are protected by a zinc-infused Super Durable TGIC thermoset powder coat finish that provides superior resistance to corrosion and weathering. A tightly controlled multi-stage process ensures a minimum 3 mils thickness for a finish that can withstand extreme climate changes without cracking or peeling. Available in both textured and non-textured finishes.

OPTICS

Precision-molded proprietary acrylic lenses are engineered for superior area lighting distribution, uniformity, and pole spacing. Light engines are available in standard 4000 K (70 minimum CRI) or optional 3000 K (80 minimum CRI) or 5000 K (70 CRI) configurations. The D-Series Size 1 has zero uplight and qualifies as a Nighttime Friendly™ product, meaning it is consistent with the LEED® and Green Globes™ criteria for eliminating wasteful uplight.

ELECTRICAL

Light engine configurations consist of 30, 40 or 60 high-efficacy LEDs mounted to metal-core circuit boards to maximize heat dissipation and promote long life (up to L96/100,000 hours at 25°C). Class 1 electronic drivers are designed to have a power factor >90%, THD <20%, and an

expected life of 100,000 hours with <1% failure rate. Easily serviceable 10kV or 6kV surge protection device meets a minimum Category C Low operation (per ANSI/IEEE C62.41.2).

INSTALLATION

Included mounting block and integral arm facilitate quick and easy installation. Stainless steel bolts fasten the mounting block securely to poles and walls, enabling the D-Series Size 1 to withstand up to a 3.0 G vibration load rating per ANSI C136.31. The D-Series Size 1 utilizes the AERIS™ series pole drilling pattern. Optional terminal block, tool-less entry, and NEMA photocontrol receptacle are also available.

LISTINGS

UL Listed for wet locations. Light engines are IP66 rated; luminaire is IP65 rated. Rated for -40°C minimum ambient. U.S. Patent No. D672,492 S. International patent pending.

DesignLights Consortium® (DLC) qualified product. Not all versions of this product may be DLC qualified. Please check the DLC Qualified Products List at www.designlights.org to confirm which versions are qualified.

WARRANTY

Five-year limited warranty. Full warranty terms located at: www.acuitybrands.com/CustomerResources/Terms_and_conditions.aspx

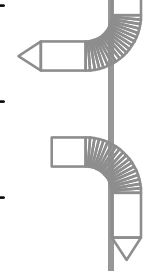
Note: Specifications subject to change without notice.



EAST WASHINGTON STREET



BIKE



301 Denning Way // Madison, WI 53717
Ph: 608.684.3500 // Fx: 608.684.3535
iconicadesigns.com

ERIK'S BIKE SHOP
3825 EAST WASHINGTON AVENUE
MADISON, WISCONSIN

ISSUE DATES:

REVISID DATE:

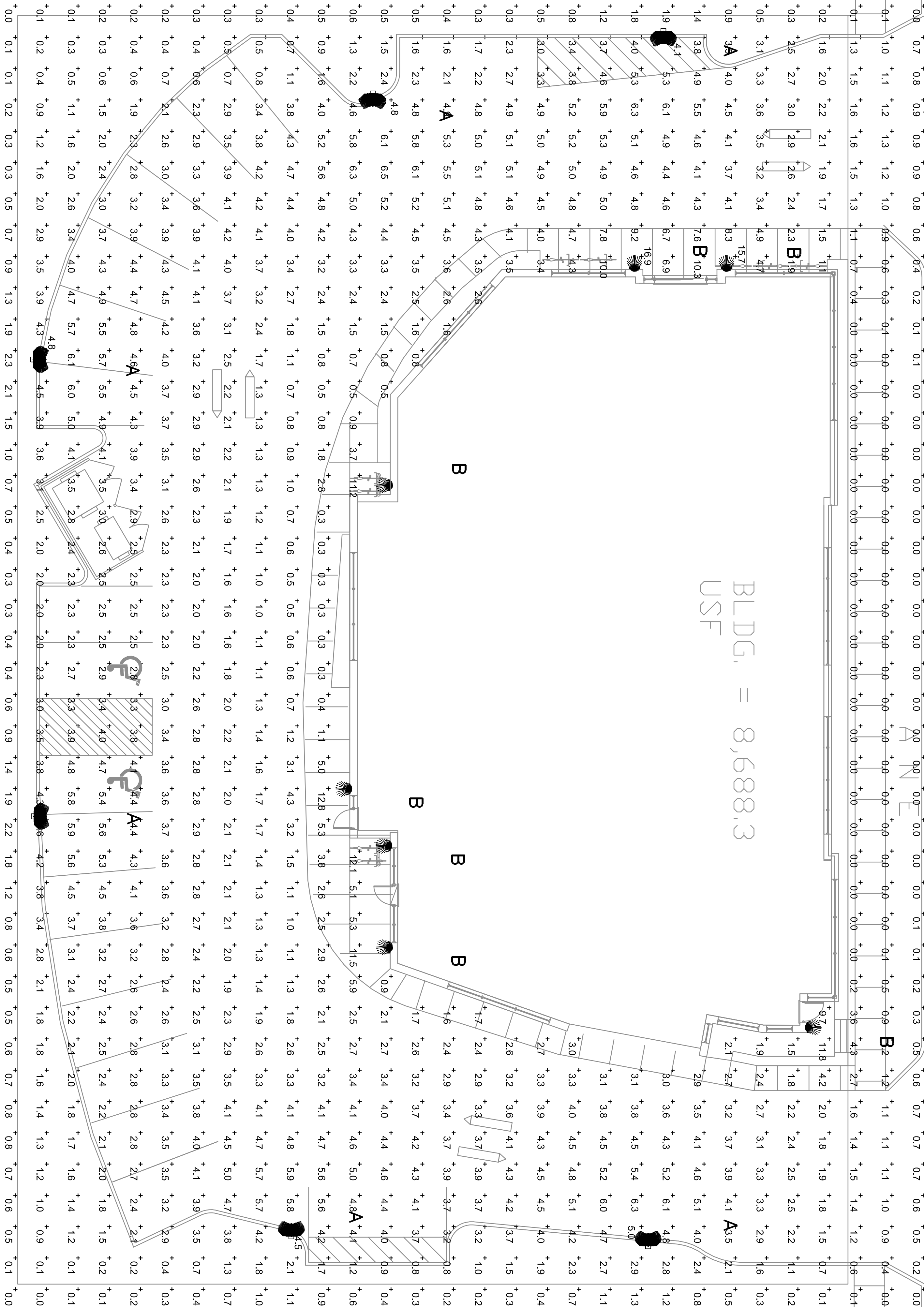
This document contains confidential or proprietary information of Iconica. Neither the whole nor any part of this document is to be reproduced, distributed, used or disclosed, either in whole or in part, except as specifically authorized by Iconica.

PROJECT #: 20140810

SHEET NUMBER

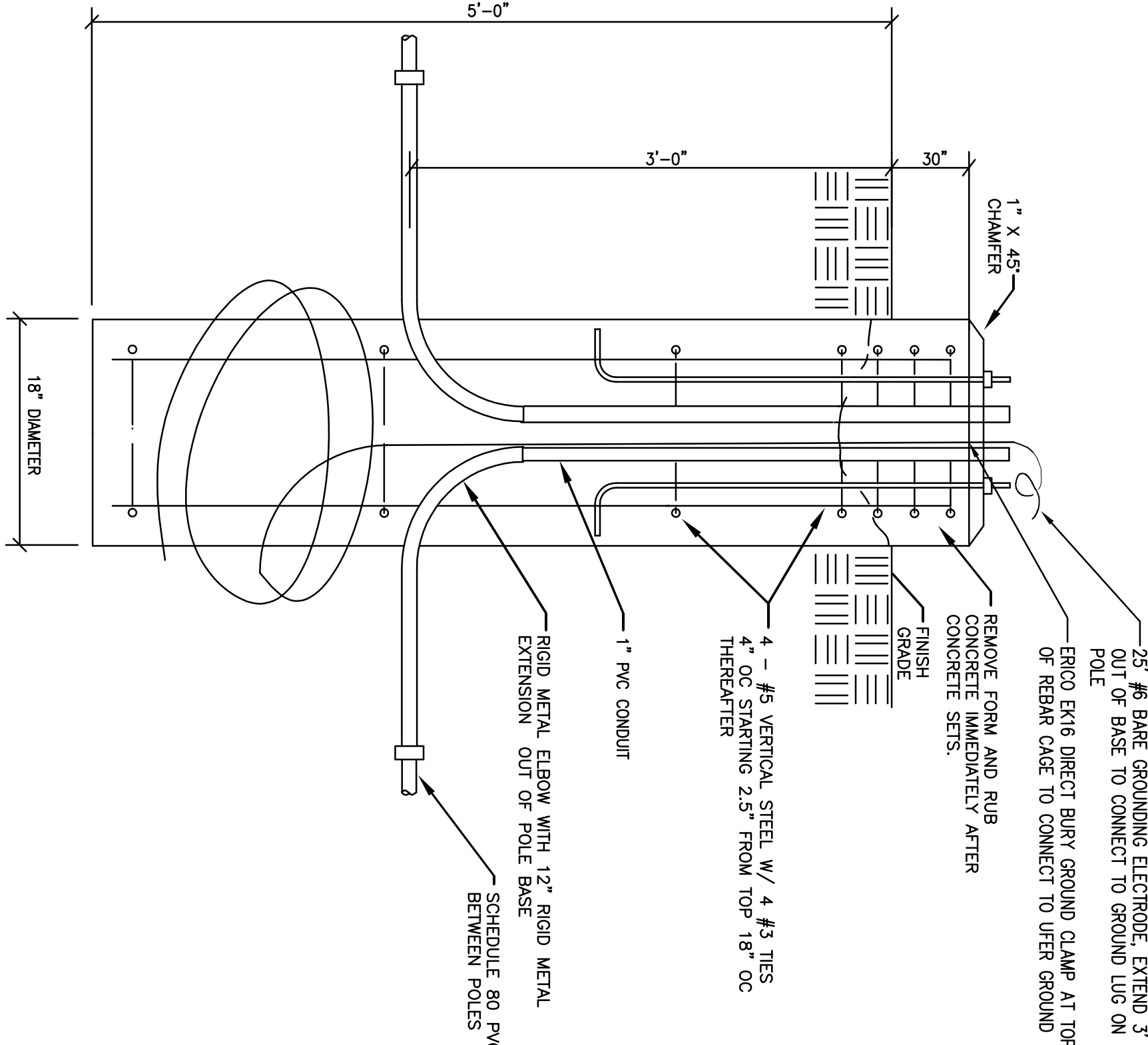
E100

©2014 Iconica, Inc.



1 SITE PLAN – LIGHTING PHOTOMETRICS
SCALE: 1" = 10'

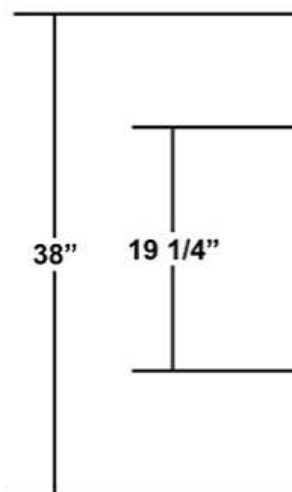
2 POLE BASE DETAIL
SCALE: NOT TO SCALE



LIGHT FIXTURE SCHEDULE								
ID	Description	Size	Manufacturer	Model #	Voltage	Lamps	Mounting	Remarks
A	LED POST MOUNTED AREA LIGHT, TYPE A DISTRIBUTION	33"x13"	UNIHANA	DSX1 LED 60C 700 40K 14W MOUNT HS	120	LED, 4000K, 131W, 80+CR	15" SQUARE ALUMINUM POLE	
B	WALL MOUNTED ENTRY LIGHT, FULL CUTOFF		RA8	SLIM12N	120	LED, 4000K, 14W, 80+CR, 1370L	WALL, 6" AFF	

EXTERIOR LIGHTING POWER CALCULATION									
BUILDING TYPE: RETAIL				ZONE: 2					
Description		Code	Area (SF)	Length (LF)	Allowable (W)	ID	# Fixtures	Watts /Fixture	Total Watts
BASE SITE ALLOWANCE		600	W				6		786
PARKING LOT & DRIVES		0.06	W/SF	13,135			7		98
MAIN ENTRY		20	W/LF	12					
OTHER DOORS		20	W/LF	12					
WALKWAYS < 10' WIDE		0.7	W/LF	260					
TOTALS					2050	DESIGN TOTAL			
					>	884	EXTERIOR COMPLIES WITH THE ENERGY CODE		

(1) INTERN. ILLUM. INTERIOR
HANGING SIGN REQ'd



8'-0"



APPROX. NIGHT VIEW



- (1) S/F INTERN. ILLUM. WALL SIGN
- * SIGN CABINETS ARE TO BE FORMED OF ALUM. PAINTED BLACK.
- * FACE IS TO BE WHITE POLYCARBONATE. ALL COPY IS TO BE WHITE w/ #3630-22 BLACK VINYL SHADOW & OPAQUE #8500-031 RED VINYL BACKGROUND.
- * PERFORATED METAL (.063" ALUM.) IS TO BE PAINTED BLACK & MOUNTED 1" OFF FACE OF SIGN.
- * "BIKES - SKIS - BOARDS" CABINET IS TO BE FORMED OF ALUM. PAINTED METALLIC SILVER. ALL COPY IS TO BE ROUTED OUT & BACKED w/ MILK WHITE ACRYLIC. COPY IS TO HAVE 3M DUAL COLOR PERFORATED VINYL (BLACK/WHITE). CIRCLES ARE TO HAVE #8500-031 RED VINYL. SIGN IS TO BE INTERN. ILLUM. w/ WHITE LED's & MOUNTED FLUSH TO BUILDING.

(1) INTERN. ILLUM.
SIGN REQ'd



WHITE "ERIK'S" & DUAL COLOR WHITE "BIKES - SKIS - BOARDS"
WILL LIGHT DIFFERENTLY AT NIGHT

APPROX. NIGHT VIEW



"Erik's" sign - 47" x 120" = 39.2 SqFt
Secondary cabinet - 13" x 183" = 16.5 SqFt
TOTAL = 55.7 SqFt

101.5 SqFt area - 40.6 SqFt available sign area

77" x 288" = 154 SqFt area - 61.6 SqFt available sign area



CLIENT HAS IDENTIFIED THE LOCATION IN WHICH THE SIGNAGE IS TO BE INSTALLED. THE CLIENT HAS THE SOLE RESPONSIBILITY FOR THE STRUCTURAL INTEGRITY OF ALL EXISTING STRUCTURES TO SUPPORT THE SIGNAGE.

Tabulation of Points and Credits

Use the table to indicate the quantity and points for all existing and proposed landscape elements.

Plant Type/ Element	Minimum Size at Installation	Points	Credits/ Existing Landscaping		New/ Proposed Landscaping	
			Quantity	Points Achieved	Quantity	Points Achieved
Overstory deciduous tree	2½ inch caliper measured diameter at breast height (dbh)	35			3	105
Tall evergreen tree (i.e. pine, spruce)	5-6 feet tall	35				
Ornamental tree	1 1/2 inch caliper	15				
Upright evergreen shrub (i.e. arborvitae)	3-4 feet tall	10			9	90
Shrub, deciduous	#3 gallon container size, Min. 12"-24"	3			88	264
Shrub, evergreen	#3 gallon container size, Min. 12"-24"	4			20	80
Ornamental grasses/ perennials	#1 gallon container size, Min. 8"-18"	2			213	426
Ornamental/ decorative fencing or wall	n/a	4 per 10 lineal ft.				
Existing significant specimen tree	Minimum size: 2 ½ inch caliper dbh. *Trees must be within developed area and cannot comprise more than 30% of total required points.	14 per caliper inch dbh. Maximum points per tree: 200				
Landscape furniture for public seating and/or transit connections	* Furniture must be within developed area, publically accessible, and cannot comprise more than 5% of total required points.	5 points per "seat"				
Sub Totals				—		965

Total Number of Points Provided

965

* As determined by ANSI, ANLA- American standards for nursery stock. For each size, minimum plant sizes shall conform to the specifications as stated in the current American Standard for Nursery Stock.



CITY OF MADISON LANDSCAPE WORKSHEET

Section 28.142 Madison General Ordinance

Project Location / Address 3825 E. WASHINGTON AVE
Name of Project ERIK'S BIKES SKIS BOARDS
Owner / Contact ERIK SALTVOED
Contact Phone 920-351-8345 Contact Email erik@eriks bikeshop.com

**** Landscape plans for zoning lots greater than ten thousand (10,000) square feet in size
MUST be prepared by a registered landscape architect. ****

Applicability

The following standards apply to all exterior construction and development activity, including the expansion of existing buildings, structures and parking lots, except the construction of detached single-family and two-family dwellings and their accessory structures. The entire development site must be brought up to compliance with this section unless **all** of the following conditions apply, in which case only the affected areas need to be brought up to compliance:

- (a) The area of site disturbance is less than ten percent (10%) of the entire development site during any ten-(10) year period.
- (b) Gross floor area is only increased by ten percent (10%) during any ten-(10) year period.
- (c) No demolition of a principal building is involved.
- (d) Any displaced landscaping elements must be replaced on the site and shown on a revised landscaping plan.

Landscape Calculations and Distribution

Required landscaped areas shall be calculated based upon the total developed area of the property. Developed area is defined as that area within a single contiguous boundary which is made up of structures, parking, driveways and docking/loading facilities, but excluding the area of any building footprint at grade, land designated for open space uses such as athletic fields, and undeveloped land area on the same zoning lot. There are three methods for calculating landscape points depending on the size of the lot and Zoning District.

- (a) For all lots except those described in (b) and (c) below, five (5) landscape points shall be provided for each three hundred (300) square feet of developed area.

Total square footage of developed area 18315 SF
Total landscape points required 305

- (b) For lots larger than five (5) acres, points shall be provided at five (5) points per three hundred (300) square feet for the first five (5) developed acres, and one (1) point per one hundred (100) square feet for all additional acres.

Total square footage of developed area _____
Five (5) acres = 217,800 square feet
First five (5) developed acres = 3,630 points
Remainder of developed area _____
Total landscape points required _____

- (c) For the Industrial – Limited (IL) and Industrial – General (IG) districts, one (1) point shall be provided per one hundred (100) square feet of developed area.

Total square footage of developed area _____
Total landscape points required _____

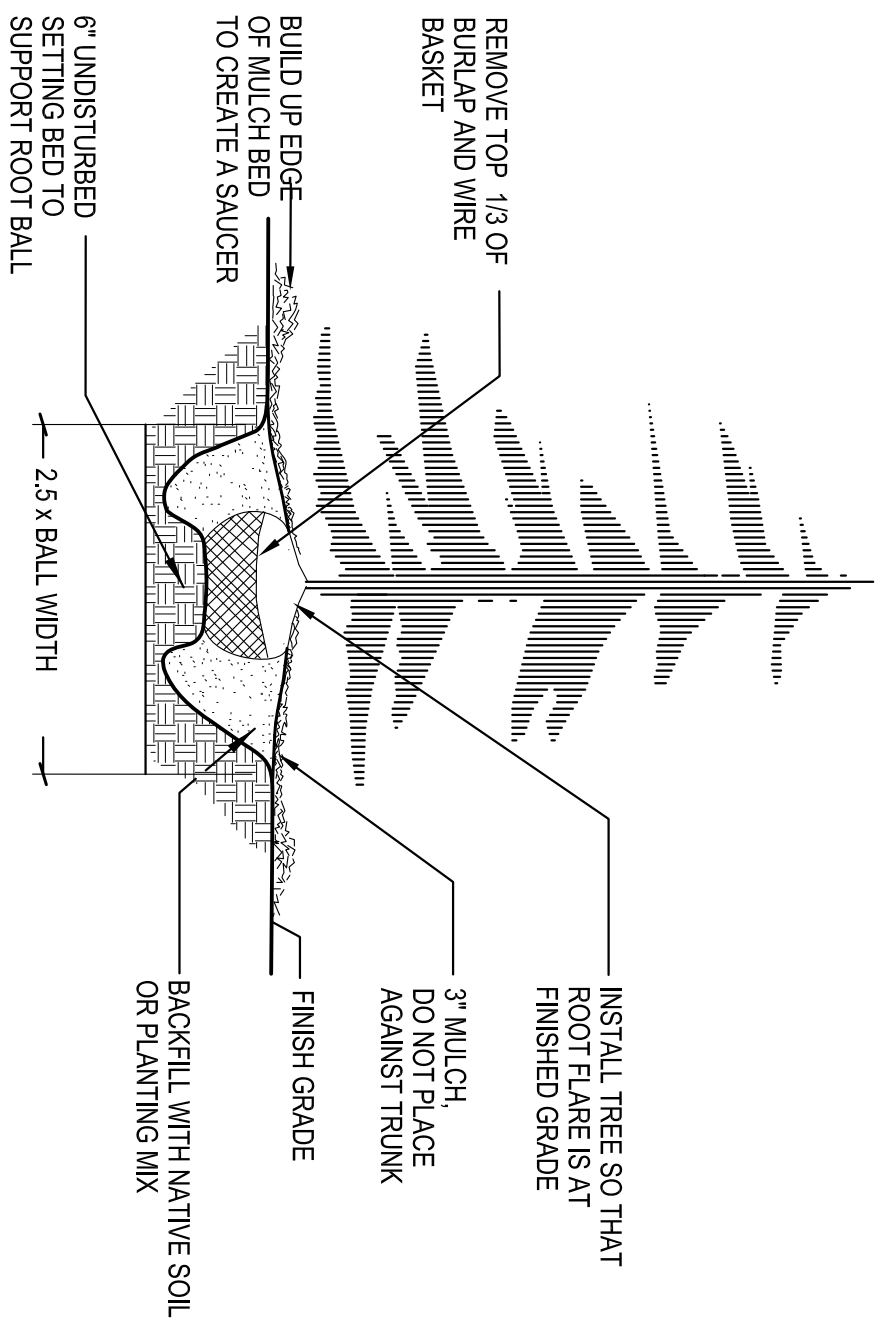
OVERALL LANDSCAPE CALCULATIONS
DEVELOPED AREA 18,315 SF
REQUIRED LANDSCAPE UNITS 61 UNITS
LANDSCAPE POINTS REQUIRED 305 POINTS
LANDSCAPE POINTS PROVIDED 965 POINTS

PLANT SCHEDULE-- PROPOSED PLANTINGS

DECIDUOUS TREES	Qty	Size	Points
Regal Prince Oak	3	2 1/2" B&B	105
QUERCUS ROBUR x BICOLOR 'LONG'			
DECIDUOUS SHRUBS			
Champion Rose	29	3 gal. Cont.	87
Woodwoken	14	1 gal. Cont.	42
Rosa 'Champlain'			
Gentia tinctoria			
Autumn Amber Sumac	21	3 gal. Cont.	63
Birchleaf Spirea	10	3 gal. Cont.	30
Cool Splash Diervilla	14	3 gal. Cont.	42
Diervilla sessilifolia 'LPDC Podaras'			
EVERGREEN SHRUBS			
Mini Arcade Juniper	10	5 gal. Cont.	40
Juniperus sabinia 'Mini Arcade'			
Arctostaphylos	4	5 gal. Cont.	16
Juniperus horizontalis 'Plumosa'			
Dwarf Yew	6	5 gal. Cont.	24
TOXUS CUSPIDATA 'NANA'			
UPRIGHT EVERGREEN			
Juniper Juniper	9	5" B&B	90
Juniperus virginiana 'Taylor'			
HERBACEOUS PLANTS			
Karl Foerster Reed Grass	64	1 gal. Cont.	128
Sporobolus heterolepis			
Prairie Dropseed	31	1 gal. Cont.	62
Golden Dew Grass	5	1 gal. Cont.	10
Deschampsia cespitosa 'Goldtau'			
Shenandoah Switchgrass	20	1 gal. Cont.	40
Panicum virgatum 'Shenandoah'			
Cordula Flower	12	1 gal. Cont.	24
Lobelia cardinalis			
Autumn Joy Sedum	36	1 gal. Cont.	72
Sedum x Herbsttraude'			
Chicago Apache Daylily	23	1 gal. Cont.	46
Hemerocallis 'Chicago Apache'			
Ice Carnival Daylily	10	1 qt. Cont.	20
Hemerocallis 'Ice Carnival'			
Little Spire Russian Sage	4	1 qt. Cont.	8
Parviflora 'Little Spire'			
Gold Dew Grass	8	1 gal. Cont.	16
Deschampsia 'Gold Dew'			
TOTAL POINTS			965

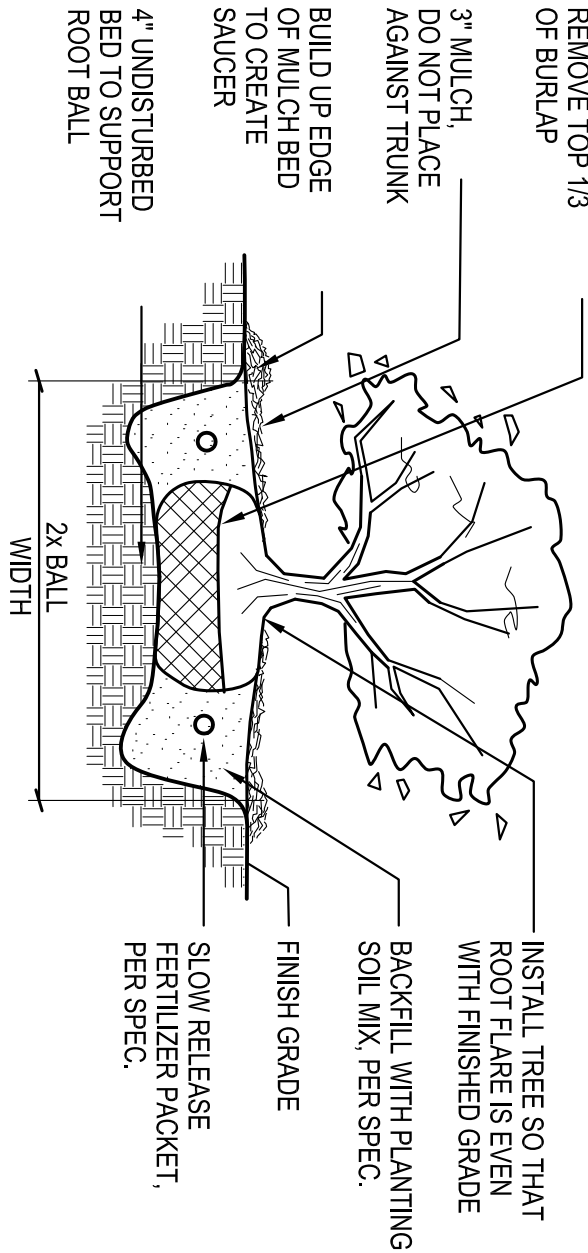
Notes:

- Contractor shall contact Diggers Hotline prior to starting work and shall be responsible for verification of all utilities.
- Upon completion of the work, remove all excess materials, debris tools, and equipment from the site. Contractor shall repair any damage to plant material and lawn areas resulting from mobilization, storage or construction.
- Final layout and materials shall be approved by landscape architect prior to installation.
- Contractor shall be responsible of clean-up of all disturbed areas. Disturbed lawn areas shall be seeded. All turf areas shall be covered with Futera Erosion Netting.
- See specifications for additional notes.
- Existing plants to remain will be flagged by Landscape Architect. Planting layout shall be adjusted on-site to accommodate existing plantings.
- All planting beds shall be mulch with 1.5" diameter washed stone over filter fabric.



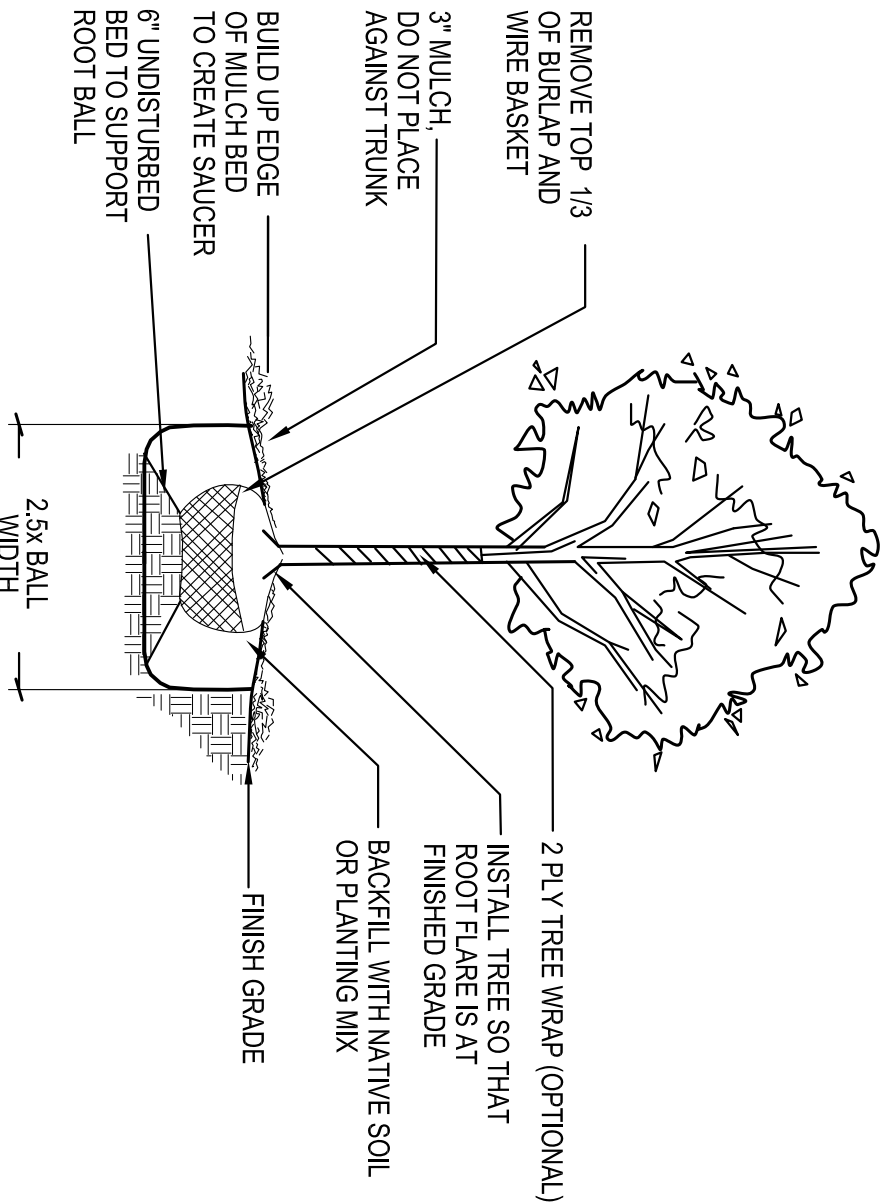
B&B EVERGREEN TREE PLANTING DETAIL

NTS



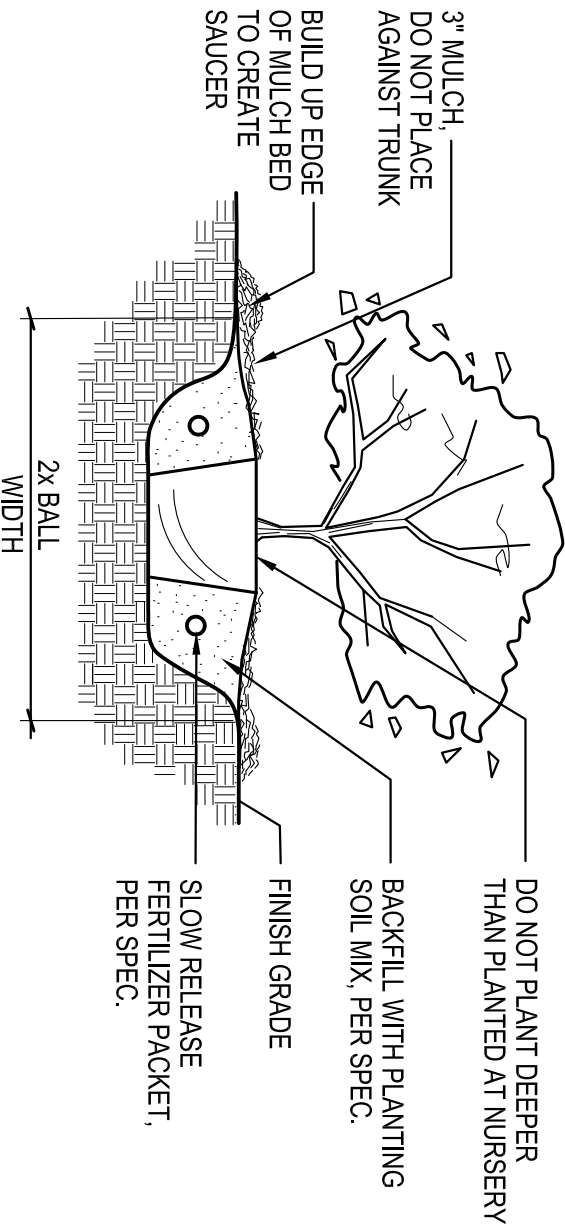
B&B SHRUB PLANTING DETAIL

NTS



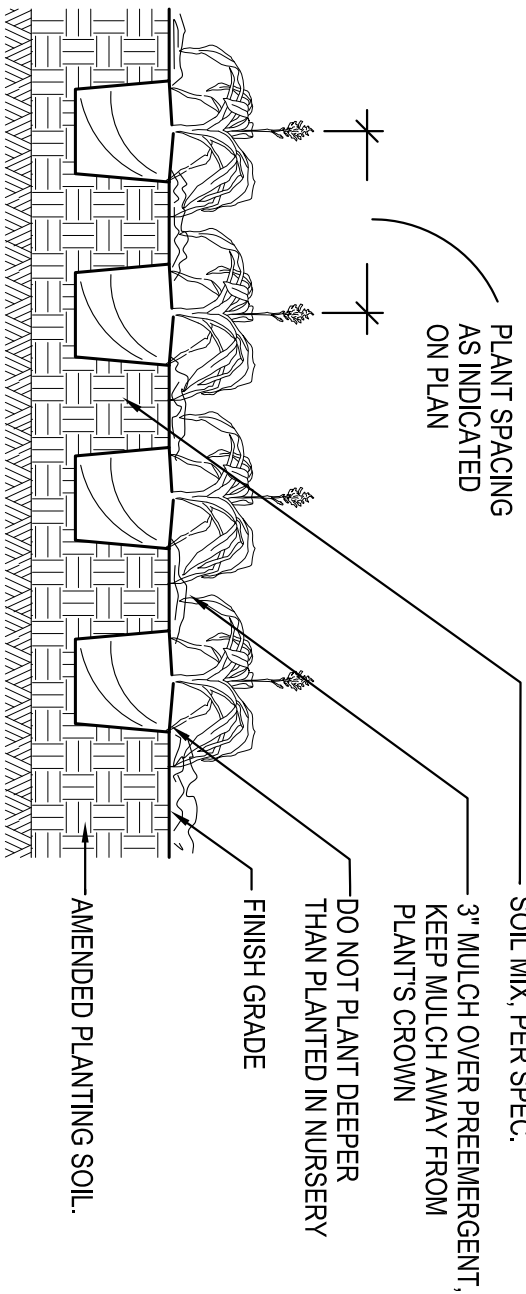
B&B TREE PLANTING DETAIL

NTS



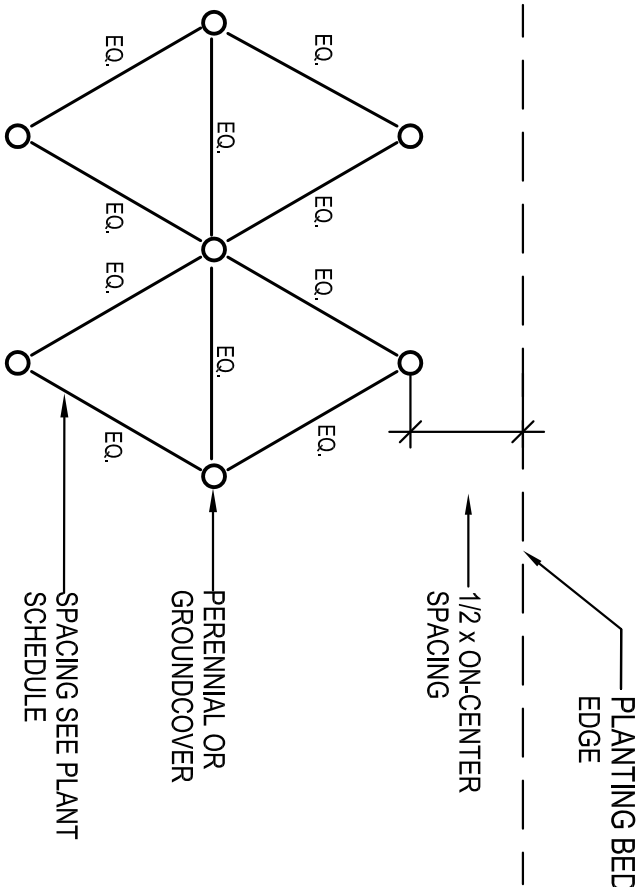
POTTED/ CONTAINER PLANTING DETAIL

NTS



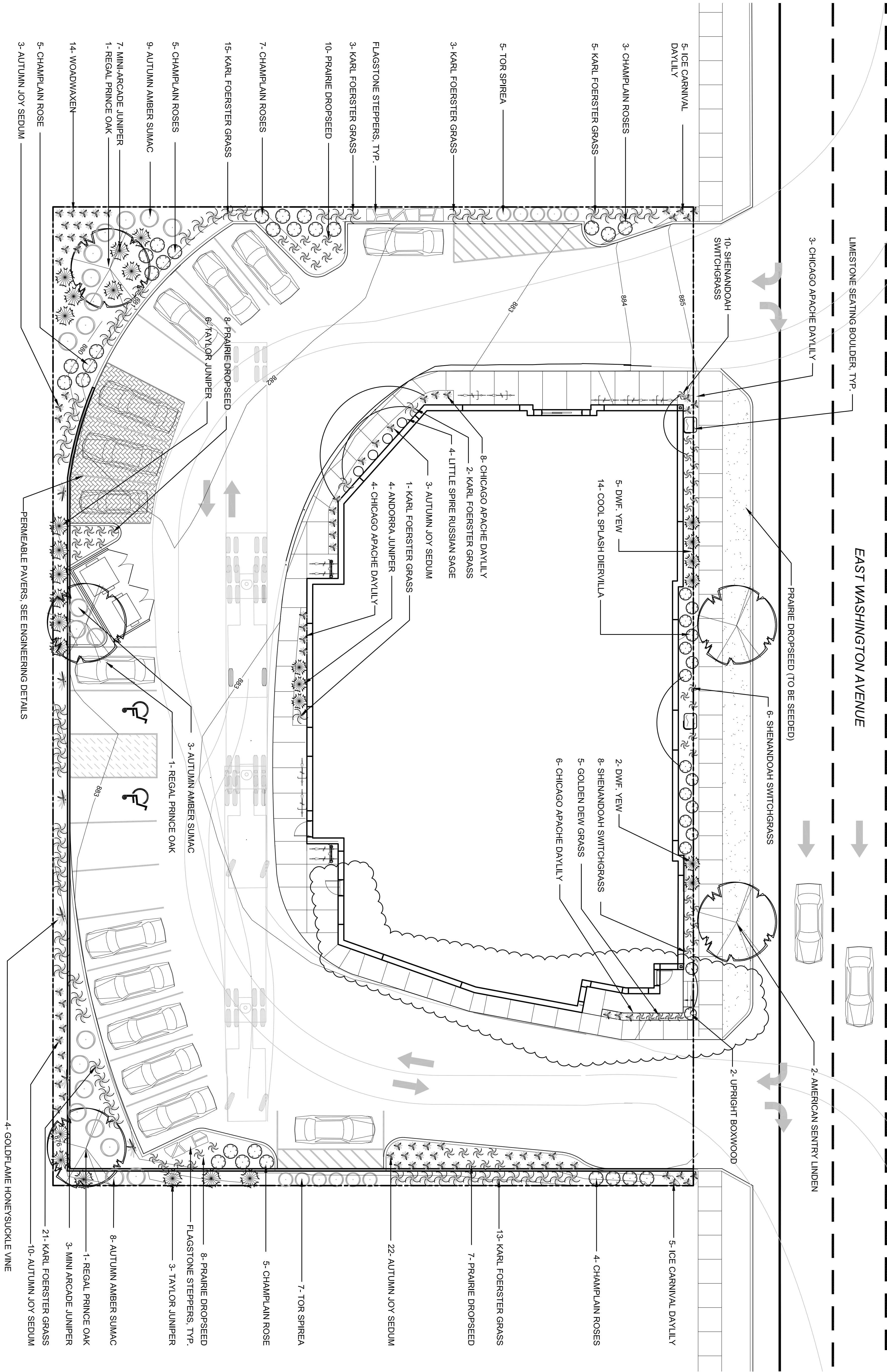
PERENNIAL PLUG PLANTING DETAIL

NTS



PLANT SPACING DETAIL

NTS



PROJECT	ERIK'S BIKES
DATE	REVISED 01.20.15
BY	DAVID HICKS
DATE	14.11.21 Landscape
BY	1 OF 2
SHEET NUMBER	1

Drawing Title

Landscape Plan

0 5' 10' 20'

ERIK'S BIKES SKIS AND BOARDS

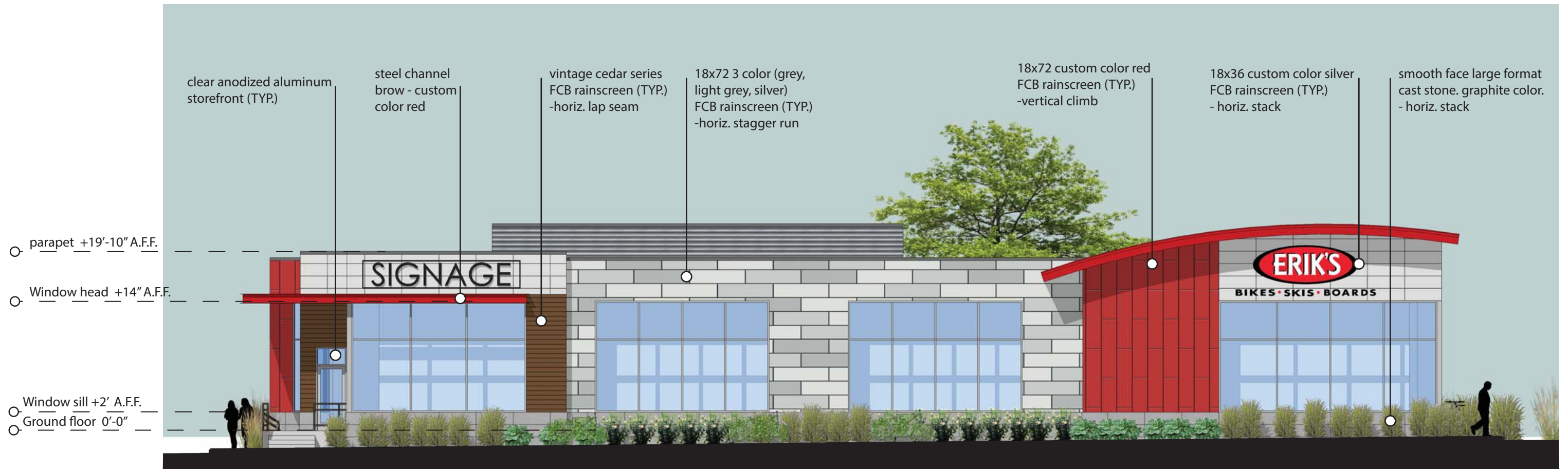
MADISON, WISCONSIN

MCKAY
NURSERY COMPANY

Since 1897 • An Employee Owned Company

PO Box 185
750 S. Monroe Street
Waterloo, WI 53594
www.mckaynursery.com

(T) 920.478.2121
(T) 800.236.4242
(F) 920.478.3615



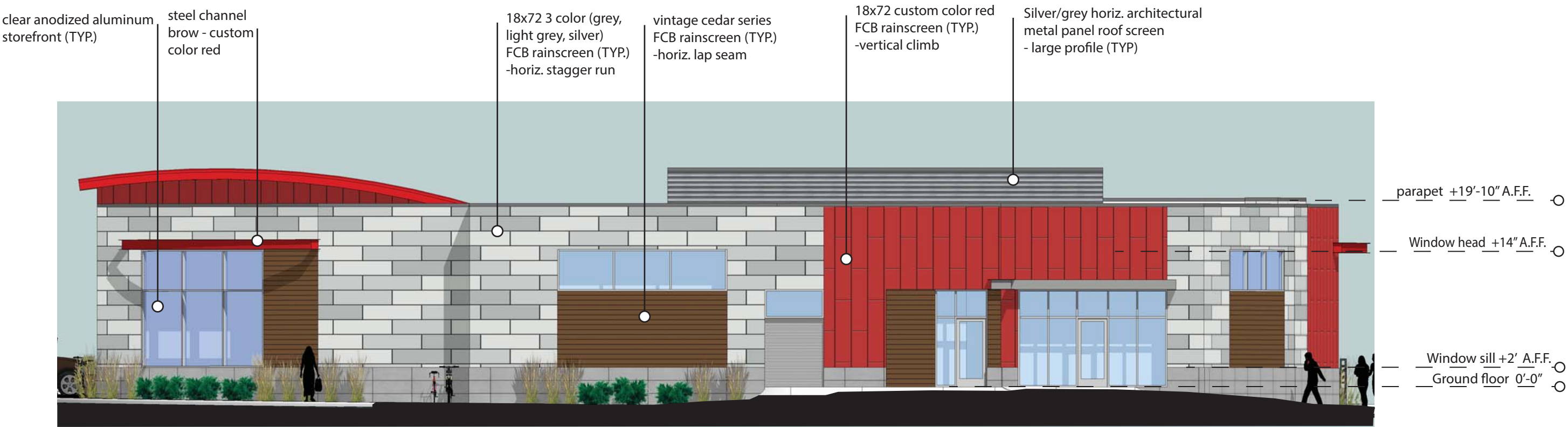
0' 5' 10' 15'

Erik's - Multi Tenant Retail North Elevation



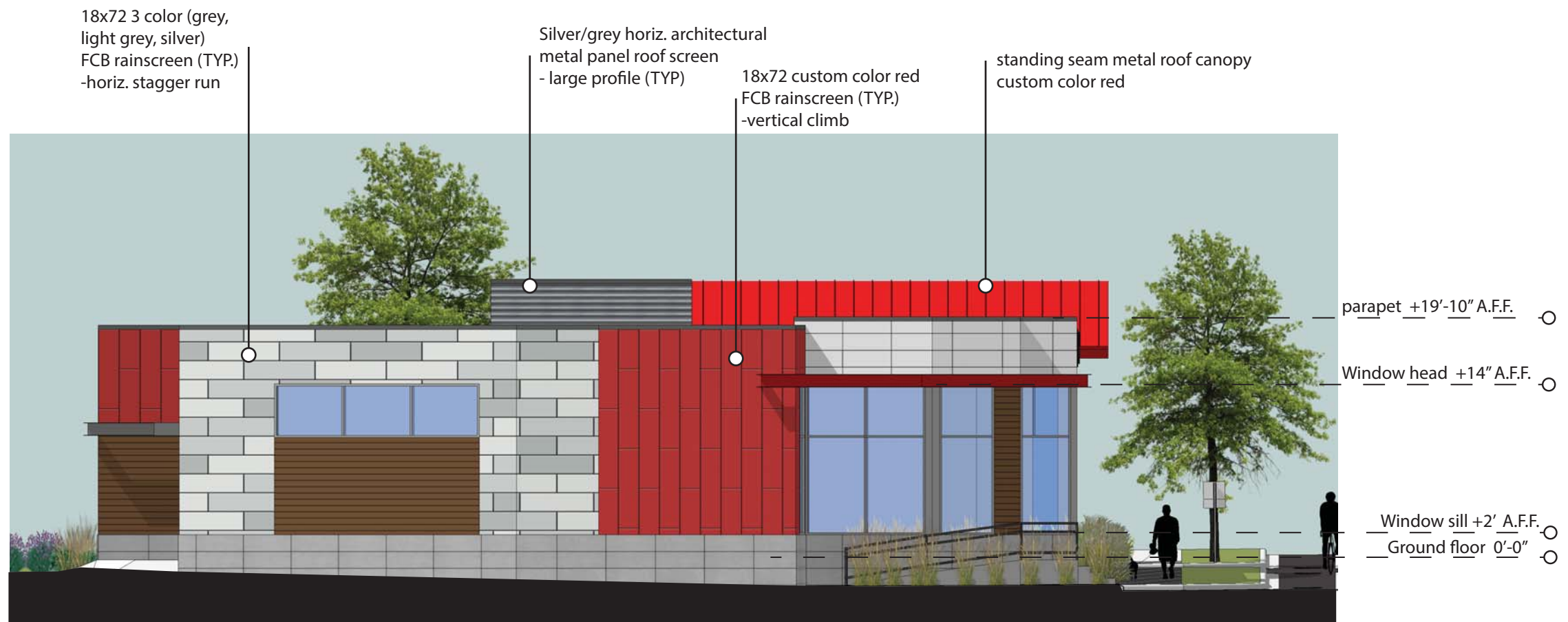


Erik's - Multi Tenant Retail
West Elevation



Erik's - Multi Tenant Retail
South Elevation





Erik's - Multi Tenant Retail
East Elevation





Erik's - Multi Tenant Retail
 Perspective view from East Washington
 looking South East





Erik's - Multi Tenant Retail
 Perspective view from East Washington
 looking South West





Erik's - Multi Tenant Retail
 Perspective view looking North West

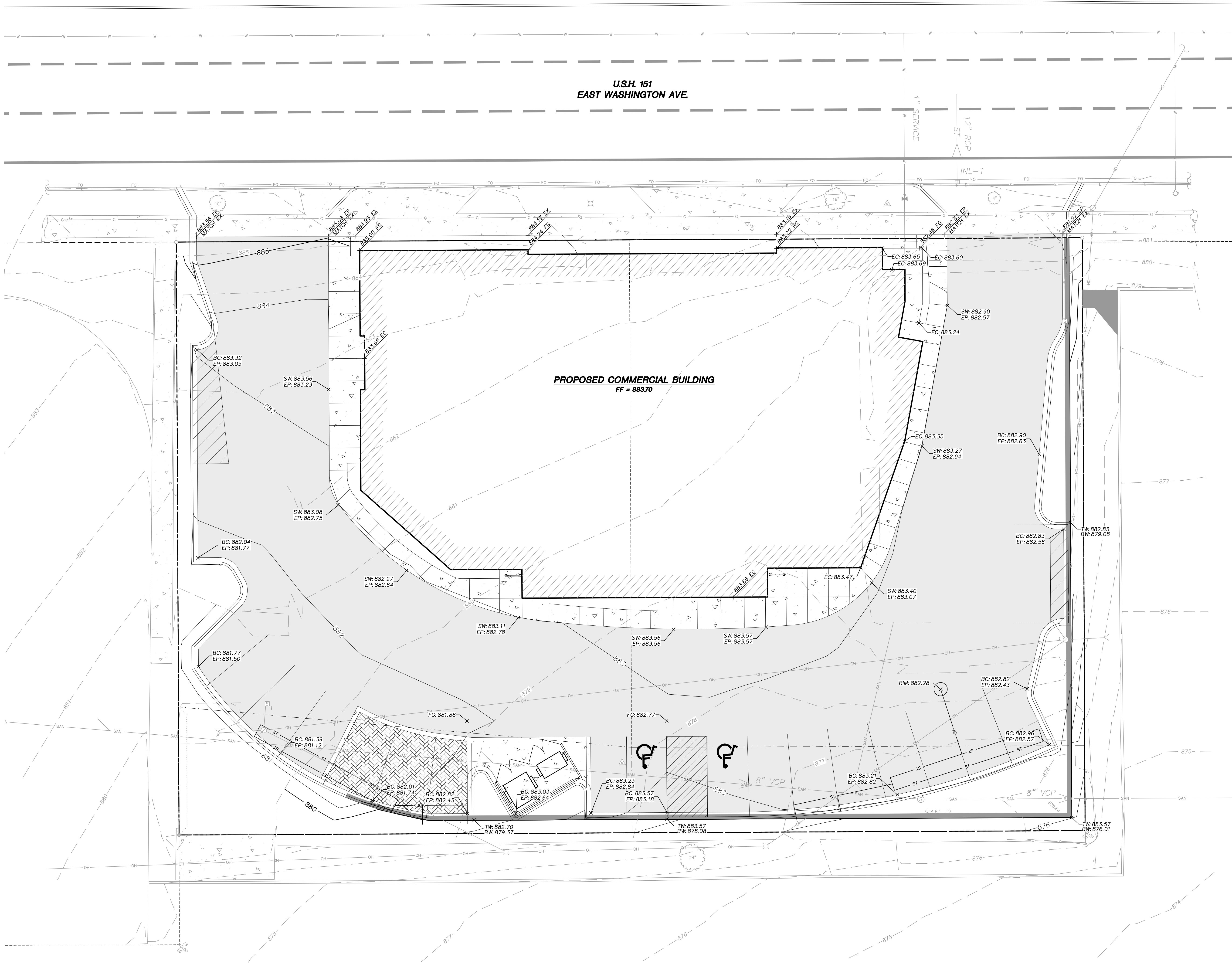




Erik's - Multi Tenant Retail
 Perspective view looking North East



File: I:\2014\14475\DWG\14475-Construction Drawings.dwg Layout: C2.0 User: mgrzesiek Plotted: Jan 21, 2015 - 8:53pm Xref: C



LEGEND (PROPOSED)

- PROPERTY LINE
- PROPOSED 1 FOOT CONTOUR
- PROPOSED 5 FOOT CONTOUR
- REJECT CURB AND GUTTER
- STANDARD CURB AND GUTTER
- ASPHALTIC PAVEMENT
- CONCRETE PAVEMENT
- SILT FENCE
- SPOT ELEVATION
- BC - BACK OF CURB
- EP - EDGE OF PAVEMENT
- RM - STRUCTURE RIM
- EC - EDGE OF CONCRETE
- FG - FINAL GRADE
- HG - HIGH POINT
- SW - SIDEWALK
- TW - TOP OF WALL
- BW - BOTTOM OF WALL

JSD Professional Services, Inc.
• Engineers • Surveyors • Planners

"BUILDING RELATIONSHIPS WITH A
COMMITMENT TO CLIENT SATISFACTION
THROUGH TRUST, QUALITY AND EXPERIENCE"

MADISON REGIONAL OFFICE
161 HORIZON DRIVE, SUITE 101
VERONA, WISCONSIN 53593
608.848.5060 PHONE | 608.848.2255 FAX

GENERAL NOTES

- REFER TO THE BOUNDARY, TOPOGRAPHIC AND UTILITY SURVEY DATED 10-17-2014 AND FOR EXISTING CONDITIONS, NOTES AND LEGEND.
- ALL WORK IN THE ROW SHALL BE IN ACCORDANCE WITH WISDOT STANDARD SPECIFICATIONS FOR HIGHWAY AND STRUCTURE CONSTRUCTION, LATEST EDITION.
- JSD SHALL BE HELD HARMLESS AND DOES NOT WARRANT ANY DEVIATIONS BY THE OWNER/CONTRACTOR FROM THE APPROVED CONSTRUCTION PLANS THAT MAY RESULT IN DISCIPLINARY ACTIONS BY ANY OR ALL REGULATORY AGENCIES.
- DRAWING FOR REVIEW - NOT FOR CONSTRUCTION UNLESS OTHERWISE NOTED IN THE TITLE BLOCK.

CONSTRUCTION SITE EROSION CONTROL REQUIREMENTS

- ALL EROSION AND SEDIMENT CONTROL PRACTICES SHALL BE DESIGNED AND IMPLEMENTED IN ACCORDANCE WITH THE CURRENT DEPARTMENT OF NATURAL RESOURCES EROSION AND SEDIMENT CONTROL TECHNICAL STANDARDS WHICH ARE AVAILABLE AT: <http://www.dnr.state.wi.us/runoff/stormwater/techstas.htm>
- INSTALL EROSION CONTROL MEASURES PRIOR TO ANY SITE WORK, INCLUDING GRADING OR DISTURBANCE OF EXISTING SURFACE MATERIALS AS SHOWN ON PLAN. MODIFICATIONS TO SEDIMENT CONTROL DESIGN MAY BE CONDUCTED TO MEET UNFORESEEN FIELD CONDITIONS IF MODIFICATIONS CONFORM TO WNR TECHNICAL STANDARDS.
- INSPECTIONS AND MAINTENANCE OF ALL EROSION CONTROL MEASURES SHALL BE ROUTINE (ONCE PER WEEK MINIMUM) TO ENSURE PROPER FUNCTION OF EROSION CONTROLS AT ALL TIMES. EROSION CONTROL MEASURES ARE TO BE IN WORKING ORDER AT THE END OF EACH WORK DAY. ONLINE REPORTING OF INSPECTIONS AND MAINTENANCE IS REQUIRED TO BE SUBMITTED TO THE CITY OF MADISON.
- INSPECT EROSION CONTROL MEASURES AFTER EACH 1/2" OR GREATER RAINFALL. REPAIR ANY DAMAGE OBSERVED DURING THE INSPECTION.
- EROSION CONTROL MEASURES SHALL BE REMOVED ONLY AFTER SITE CONSTRUCTION IS COMPLETE WITH ALL SOIL SURFACES HAVING AN ESTABLISHED VEGETATIVE COVER.
- INSTALL A TRACKING PAD, 50' LONG AND NO LESS THAN 12" THICK BY USE OF 3" CLEAR STONE. TRACKING PADS ARE TO BE MAINTAINED BY THE CONTRACTOR IN A CONDITION WHICH WILL PREVENT THE TRACKING OF MUD OR DRY SEDIMENT ONTO THE ADJACENT PUBLIC STREETS AFTER EACH WORKING DAY OR MORE FREQUENTLY AS REQUIRED BY THE CITY OF MADISON.
- INSTALL EROSION CONTROLS ON THE DOWNSTREAM SIDE OF STOCKPILES AND PROVIDE TEMPORARY SEEDING ON STOCKPILES WHICH ARE TO REMAIN IN PLACE FOR MORE THAN 7 DAYS.
- INSTALL CHECK DAMS WITHIN DRAINAGE DITCHES AND IN FRONT OF SILT FENCING IN ANY LOW AREA ALL IN ACCORDANCE WITH WNR TECHNICAL STANDARDS.
- EROSION CONTROL FOR UTILITY CONSTRUCTION (STORM SEWER, SANITARY SEWER, WATER MAIN, ETC.):
 - PLACE EXCAVATED TRENCH MATERIAL ON THE HIGH SIDE OF THE TRENCH.
 - BACKFILL, COMPACT, AND STABILIZE THE TRENCH IMMEDIATELY AFTER PIPE CONSTRUCTION.
 - DISCHARGE TRENCH WATER INTO A SEDIMENTATION BASIN OR FILTERING TANK IN ACCORDANCE WITH THE DRAINAGE TECHNICAL STANDARD NO. 1061 PRIOR TO RELEASE INTO THE STORM SEWER, RECEIVING STREAM, OR DRAINAGE DITCH.
- INSTALL TYPE D INLET PROTECTION AROUND ALL STORM SEWER INLETS AND CATCH BASINS THAT MAY RECEIVE RUNOFF FROM AREAS UNDER CONSTRUCTION. REFER TO WISDOT FDM FOR RESPECTIVE DETAILS.
- APPLY ANIONIC POLYMER TO DISTURBED AREAS IF EROSION BECOMES PROBLEMATIC.
- ADDITIONAL EROSION CONTROL MEASURES, AS REQUESTED BY STATE INSPECTORS, LOCAL INSPECTORS, AND/OR ENGINEER SHALL BE INSTALLED WITHIN 24 HOURS OF REQUEST.
- ALL SLOPES EXCEEDING 5:1 (20%) SHALL BE STABILIZED WITH A CLASS II, TYPE B EROSION MATTING AND DRAINAGE SCALES SHALL BE STABILIZED WITH CLASS I, TYPE B EROSION MATTING OR APPLICATION OF A WDOT APPROVED POLYMER SOIL STABILIZATION TREATMENT OR A COMBINATION THEREOF. AS REQUIRED, CONTRACTOR SHALL PROVIDE PRODUCT SPECIFICATIONS TO PROJECT ENGINEER FOR APPROVAL.
- CONTRACTOR/OWNER SHALL FILE A NOTICE OF TERMINATION UPON VEGETATIVE STABILIZATION AND/OR OPERATIONS. REFER TO WNR TECHNICAL STANDARD 1068.
- CONTRACTOR SHALL TAKE ALL NECESSARY STEPS TO CONTROL DUST ARISING FROM CONSTRUCTION OPERATIONS. REFER TO WNR TECHNICAL STANDARD 1068.
- CONTRACTOR TO PROVIDE SEALED OR SOLID LID, OR FILTER BAGS ON ALL OPEN MANHOLES DURING CONSTRUCTION TO MINIMIZE SEDIMENT FROM ENTERING THE STORM SEWER SYSTEM.
- BUILDING AND WASTE MATERIAL SHALL BE HANDLED TO PREVENT RUNOFF OF MATERIAL INTO WATERS OF THE STATE.
- NO SOLID MATERIAL IS DISCHARGED IN VIOLATION OF WISCONSIN STATUTES CHAPTERS 30 OR 31, OR USC 1344 PERMITS.
- SHOULD GRANULAR SOIL SEAMS BE ENCOUNTERED BELOW PLANNED WATER LEVELS DURING EXCAVATION OF THE POND, THESE SOILS SHALL BE OVER EXCAVATED A MINIMUM OF 2 FEET AND REPLACED WITH COMPACTED CLAY MATERIALS TO SERVE AS A PLUG.

GRADING AND SEEDING NOTES

- ALL DISTURBED AREAS SHALL BE SEED AND MULCHED IMMEDIATELY FOLLOWING GRADING ACTIVITIES. SEED MIX TO BE IN ACCORDANCE WITH LANDSCAPE PLAN.
- CONTRACTOR SHALL STABILIZE ANY EXPOSED SOIL SURFACES ON THE SITE WITH MULCH PRIOR TO WINTER.
- ALL PROPOSED GRADES SHOWN ARE FINISHED GRADES. CONTRACTOR SHALL VERIFY ALL GRADES, MAKE SURE ALL AREAS DRAIN PROPERLY AND SHALL REPORT ANY DISCREPANCIES TO THE ENGINEER PRIOR TO CONSTRUCTION.
- CONTRACTOR SHALL PROTECT ADJACENT PROPERTIES WITH SILT FENCING FOR EROSION CONTROL UNTIL CONSTRUCTION IS COMPLETED AND NOTICE OF TERMINATION FILED.
- CONTRACTOR SHALL WATER ALL NEWLY SEEDING AREAS DURING THE SUMMER MONTHS WHENEVER THERE IS A 7 DAY LAPSE WITH NO SIGNIFICANT RAINFALL.
- CONTRACTOR TO DEEP TILL ALL COMPACTED PAVED SURFACES PRIOR TO SEEDING AND MULCHING. THIS MUST BE VERIFIED BY THE ENGINEER AS PART OF THE AS-BUILT CERTIFICATION.
- THE CONTRACTOR SHALL NOTIFY THE CITY OF MADISON A MINIMUM OF TWO (2) WORKING DAYS IN ADVANCE OF ANY SOIL DISTURBING ACTIVITY.

JSD Professional Services, Inc.
• Engineers • Surveyors • Planners

"BUILDING RELATIONSHIPS WITH A
COMMITMENT TO CLIENT SATISFACTION
THROUGH TRUST, QUALITY AND EXPERIENCE"

MADISON REGIONAL OFFICE
161 HORIZON DRIVE, SUITE 101
VERONA, WISCONSIN 53593
608.848.5060 PHONE | 608.848.2255 FAX

MADISON | MILWAUKEE
KENOSHA | APPLETON
www.jsdinc.com

SERVICES PROVIDED TO:

ICONICA

PROJECT:

ERIK'S BIKE SHOP
E. WASHINGTON AVE.

PROJECT LOCATION:

CITY OF MADISON
DANE COUNTY, WI

JSD PROJECT NO.:

14-6475

SEAL/SIGNATURE:

ALTHOUGH EVERY EFFORT HAS BEEN MADE
IN PREPARING THESE PLANS AND CHECKING
THEM FOR ACCURACY, THE CONTRACTOR
AND SUBCONTRACTORS MUST CHECK ALL
DETAIL AND DIMENSIONS OF THEIR TRADE
AND BE RESPONSIBLE FOR THE SAME.

DESIGN: MGD 11-19-14
DRAWN: MGD 11-19-14
APPROVED:

PLAN MODIFICATIONS:

LOC SUBMITTAL 12-17-14

DIGGERS HOTLINE

Toll Free (800) 242-8511
Milwaukee Area (414) 259-1181
Hearing Impaired TDD (800) 542-2289
www.DiggersHotline.com

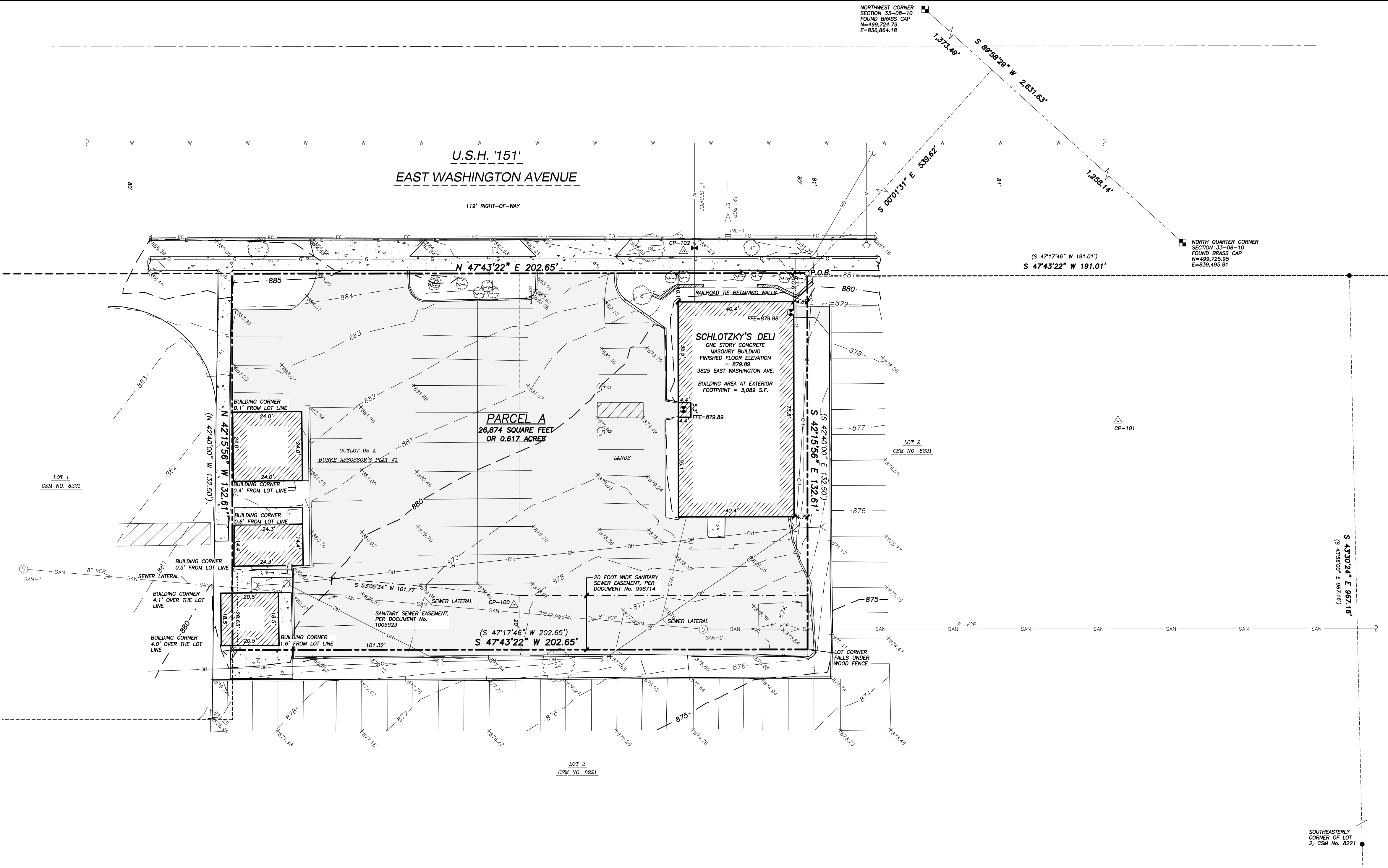
SHEET TITLE:

GRADING AND
EROSION CONTROL
PLAN

SHEET NUMBER:

C-2.0

File: I:\2014\146475\146475-S\DWG\146475-Excon.dwg User: jk Plotted: Oct 23, 2014 -- 11:40am Xref's:



LEGEND

- GOVERNMENT CORNER
- 3/4" REBAR FOUND
- CHISELED 'X' FOUND
- 3/4" x 24" REBAR SET (1.50 LBS/LF)
- CONTROL POINT
- BENCHMARK
- FINISHED FLOOR SHOT LOCATION
- SIGN
- SANITARY MANHOLE
- HYDRANT
- WATER OR GAS VALVE
- CURB INLET
- GAS REGULATOR/METER
- POWER POLE W/GUY
- LIGHT POLE
- DECIDUOUS TREE
- BUSH
- HANDICAP PARKING
- SECTION LINE
- PARCEL BOUNDARY
- PLATTED LOT LINE
- RIGHT-OF-WAY LINE
- CENTERLINE
- EASEMENT LINE
- FENCE LINE
- GUARD OR SAFETY RAIL
- EDGE OF PAVEMENT
- CONCRETE CURB & GUTTER
- EDGE OF GRAVEL
- SANITARY SEWER
- WATER LINE
- STORM SEWER
- NATURAL GAS
- OVERHEAD ELECTRIC DISTRIBUTION
- FIBER OPTIC
- BUILDING
- INDEX CONTOUR
- INTERMEDIATE CONTOUR
- SPOT ELEVATION
- BITUMINOUS PAVEMENT
- RETAINING WALL
- CONCRETE PAVEMENT
- GRAVEL
- DISCONTINUED MAPPED PIPE LINE
- DENOTES RECORD DATA DEPICTING THE SAME LINE ON THE GROUND AS RETRACTED BY THIS SURVEY

NOTES

- FIELD WORK PERFORMED BY JSD PROFESSIONAL SERVICES, INC. ON OCTOBER 17, 2014.
- BEARINGS FOR THIS SURVEY AND MAP ARE BASED ON THE WISCONSIN COUNTY COORDINATE SYSTEM, (WCCS), DANE COUNTY. THE NORTH LINE OF THE NORTHWEST QUARTER BEARS S 89°58'29" W.
- ELEVATIONS ARE BASED ON THE NORTH AMERICAN VERTICAL DATUM OF 1988 (NAVD88). BENCHMARK IS A ALUMINUM CAP MARKING THE NORTHWEST CORNER OF SECTION 33, T08N, R10E, ELEVATION = 865.54'
- CONTOUR INTERVAL IS ONE FOOT.
- SPOT ELEVATIONS SHOWN ALONG CURB AND GUTTER REFERENCE THE TOP BACK OF CURB.
- SUBSURFACE UTILITIES AND FEATURES SHOWN ON THIS MAP HAVE BEEN APPROXIMATED BY LOCATING SURFICIAL FEATURES AND APPURTENANCES. LOCATING DIGGERS HOTLINE FIELD MARKINGS AND BY REFERENCE TO UTILITY RECORDS AND MAPS. DIGGERS HOTLINE TICKET NO. 20144203488 AND 20144203496, WITH A CLEAR DATE OF OCTOBER 17, 2014.
- BEFORE EXCAVATION, APPROPRIATE UTILITY COMPANIES SHOULD BE CONTACTED. FOR EXACT LOCATION OF UNDERGROUND UTILITIES, CONTACT DIGGERS HOTLINE, AT 1.800.242.8511.
- THE ACCURACY OF THE BENCHMARKS SHOWN ON THIS MAP SHALL BE VERIFIED BEFORE BEING UTILIZED. JSD PROFESSIONAL SERVICES, INC. DOES NOT WARRANT THE ACCURACY OF THESE BENCHMARKS.
- THIS PARCEL IS ZONED CC-T, PER THE CITY OF MADISON ZONING MAP DATED JANUARY 2013.
- THIS PARCEL IS SUBJECT TO ALL EASEMENTS AND AGREEMENTS, BOTH RECORDED AND UNRECORDED.

LEGAL DESCRIPTION AS SURVEYED

PART OF OUTLOT 92 A, BURKE ASSESSOR'S PLAT #1, AND PART OF THE NORTHEAST QUARTER OF THE NORTHWEST QUARTER AND THE NORTHWEST QUARTER OF THE NORTHWEST QUARTER OF SECTION 33, TOWNSHIP 08 NORTH, RANGE 10 EAST, CITY OF MADISON, DANE COUNTY, WISCONSIN, MORE PARTICULARLY DESCRIBED AS FOLLOWS:

COMMENCING AT THE NORTH QUARTER OF SECTION 33, AFORESAID; THENCE SOUTH 89 DEGREES 58 MINUTES 29 SECONDS WEST ALONG THE NORTH LINE OF THE NORTHWEST QUARTER OF SAID SECTION 33 A DISTANCE OF 1,258.14 FEET; THENCE SOUTH 00 DEGREES 01 MINUTES 31 SECONDS EAST, 539.62 FEET TO THE SOUTHEASTERLY RIGHT-OF-WAY LINE OF EAST WASHINGTON AVENUE (U.S.H. '151') AND THE POINT OF BEGINNING; THENCE SOUTH 42 DEGREES 15 MINUTES 56 SECONDS EAST, 132.61 FEET; THENCE SOUTH 47 DEGREES 43 MINUTES 22 SECONDS WEST, 202.65 FEET; THENCE NORTH 42 DEGREES 15 MINUTES 56 SECONDS WEST, 132.61 FEET TO THE SOUTHEASTERLY RIGHT-OF-WAY LINE OF EAST WASHINGTON AVENUE; THENCE NORTH 47 DEGREES 43 MINUTES 22 SECONDS EAST ALONG SAID RIGHT-OF-WAY LINE, 202.65 FEET TO THE POINT OF BEGINNING.

SAID PARCEL CONTAINS 26,874 SQUARE FEET OF 0.617 ACRES.

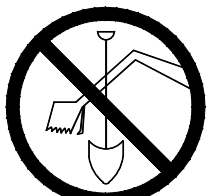
SURVEYOR'S CERTIFICATE

I, JOHN KREBS, WISCONSIN REGISTERED LAND SURVEYOR NO. S-1878, HEREBY CERTIFY THAT THIS BOUNDARY, TOPOGRAPHIC AND UTILITY SURVEY AND MAP IS CORRECT TO THE BEST OF MY KNOWLEDGE AND BELIEF IN ACCORDANCE WITH THE INFORMATION PROVIDED.

JOHN KREBS, S-1878
PROFESSIONAL LAND SURVEYOR

DATE

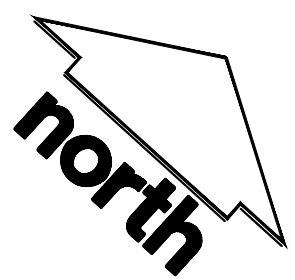
TO OBTAIN LOCATIONS OF PARTICIPANT UNDERGROUND FACILITIES BEFORE YOU DIG IN WISCONSIN



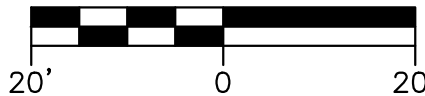
CALL DIGGERS HOTLINE
1-800-242-8511 TOLL FREE

WISCONSIN STATE STATUTE 182.01(7)(b) REQUIRES MINIMUM THREE (3) WORK DAYS NOTICE BEFORE YOU EXCAVATE

THE INFORMATION SHOWN ON THIS DRAWING CONCERNING TYPE AND LOCATION OF UNDERGROUND UTILITIES IS NOT GUARANTEED TO BE ACCURATE OR ALL INCLUSIVE. THE CONTRACTOR IS RESPONSIBLE FOR MAKING THE CONTRACTOR'S OWN DETERMINATIONS AS TO THE TYPE AND LOCATION OF UNDERGROUND UTILITIES AS MAY BE NECESSARY TO AVOID DAMAGE THEREOF.



SCALE IN FEET



JSD Professional Services, Inc.
Engineers • Surveyors • Planners

"BUILDING RELATIONSHIPS WITH A COMMITMENT TO CLIENT SATISFACTION THROUGH TRUST, QUALITY AND EXPERIENCE"

- CIVIL ENGINEERING
- SURVEYING & MAPPING
- CONSTRUCTION SERVICES
- WATER RESOURCES
- PLANNING & DEVELOPMENT
- TRANSPORTATION ENGINEERING
- STRUCTURAL ENGINEERING
- LANDSCAPE ARCHITECTURE

MADISON REGIONAL OFFICE
161 HORIZON DRIVE, SUITE 101
VERONA, WISCONSIN 53593
608.848.5060 PHONE | 608.848.2255 FAX
MADISON | MILWAUKEE
KENOSHA | APPLETON
www.jsdinc.com

SERVICES PROVIDED TO:

ICONICA
901 DEMING WAY
MADISON, WI 53717

PROJECT:

ERIK'S BIKE SHOP

PROJECT LOCATION:

CITY OF MADISON
DANE COUNTY, WI

JSD PROJECT NO.: 14-6475

SEAL/SIGNATURE:

ALTHOUGH EVERY EFFORT HAS BEEN MADE IN PREPARING THESE PLANS AND CHECKING THEM FOR ACCURACY, THE CONTRACTOR AND SUBCONTRACTORS MUST CHECK ALL DETAIL AND DIMENSIONS OF THEIR TRADE AND BE RESPONSIBLE FOR THE SAME.

DESIGN:
DRAWN: JK 10-20-14
APPROVED: TJB 10-21-14

PLAN MODIFICATIONS: DATE:

DIGGERS HOTLINE

Call 811 or (800) 242-8511
Milwaukee Area (262) 432-7910
Hearing Impaired TDD (800) 542-2289
www.DiggersHotline.com

SHEET TITLE:

BOUNDARY,
TOPOGRAPHIC,
AND UTILITY SURVEY

MAP NO: C-374

SHEET NUMBER:

1

THESE PLANS AND DESIGNS ARE COPYRIGHT PROTECTED AND MAY NOT BE USED IN WHOLE OR IN PART WITHOUT THE WRITTEN CONSENT OF JSD PROFESSIONAL SERVICES, INC.



Storage buildings



Deli photo #1



Deli interior photo



Deli photo #2



Deli photo #3



Deli photo #4

Buildings To Be Demolished





MENDOTA

Context Photo
Looking South-West #1





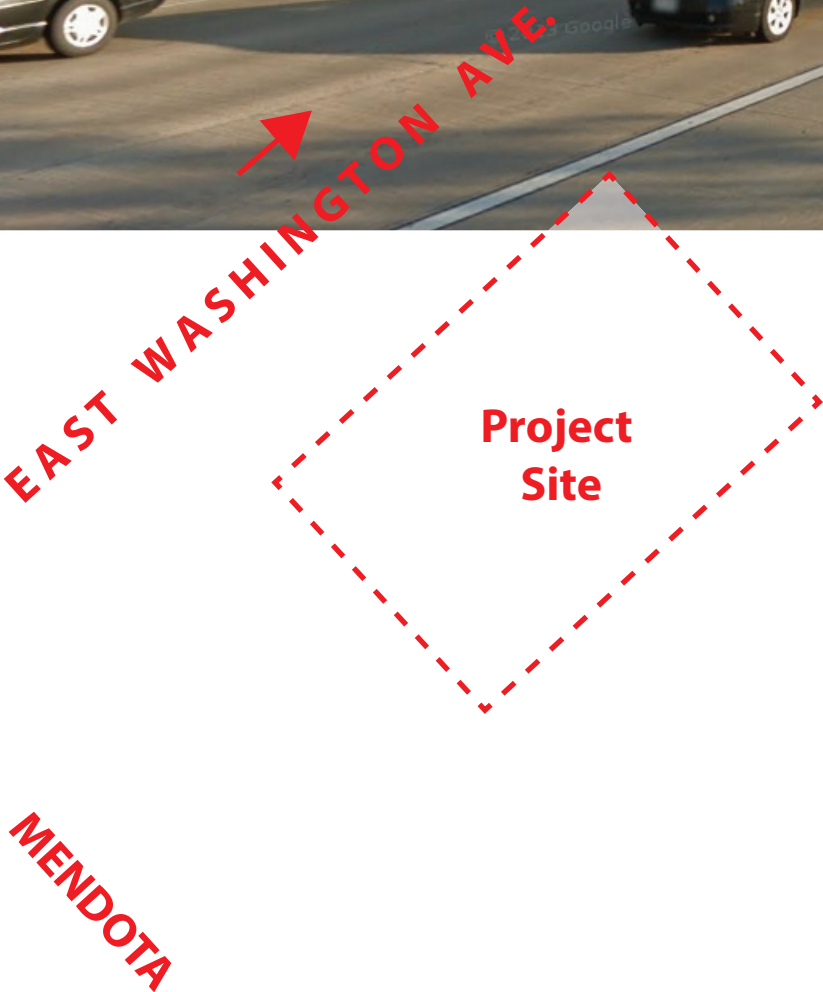
EAST WASHINGTON AVE.

Project
Site

MENDOTA

Context Photo
Looking South-West #2



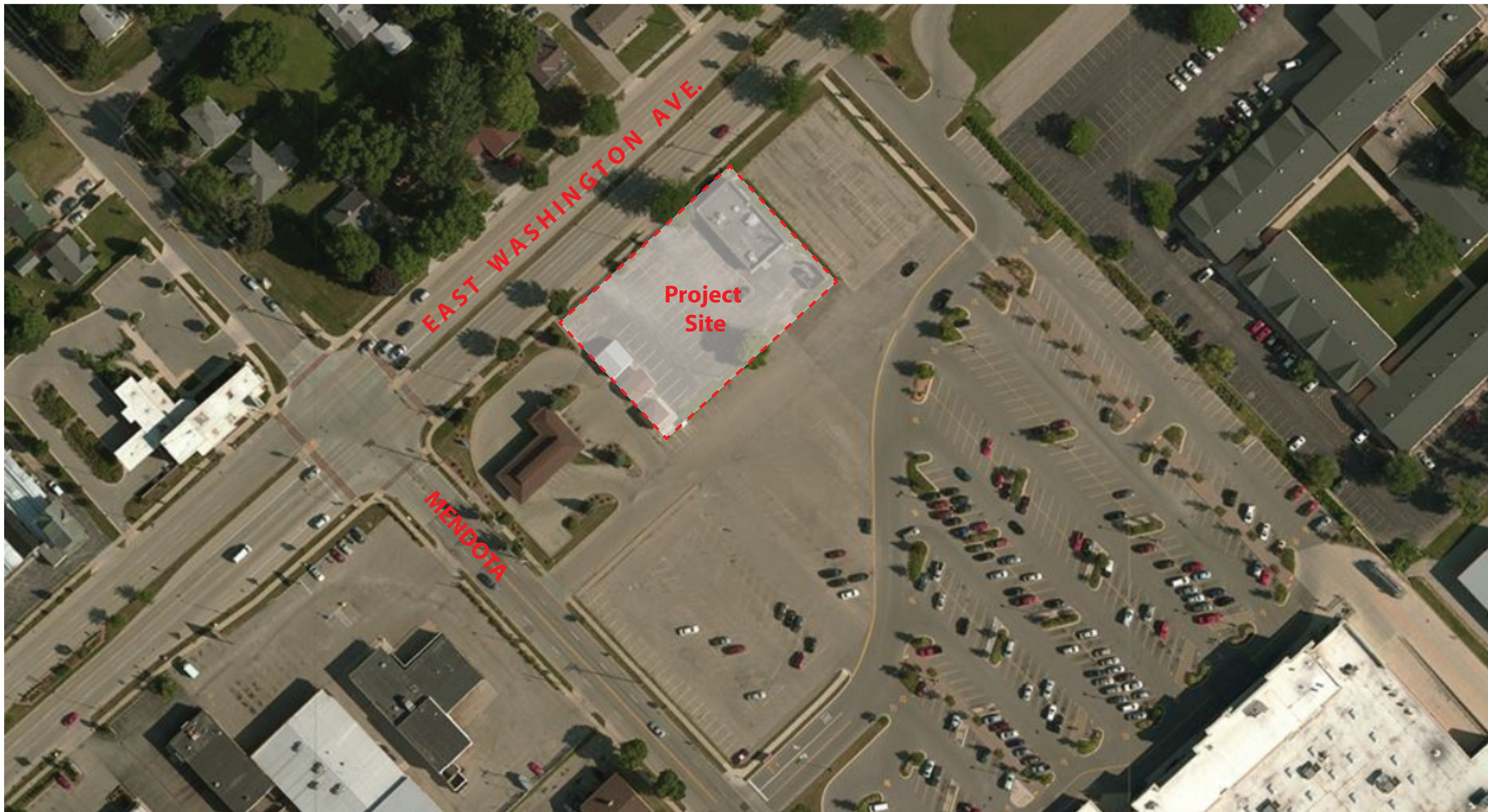


Context Photo
Looking North - East





Context Photo
Looking South



Locator Map



Project Description
Erik's BIKES SKIS BOARDS
December 17, 2014
Revised January 21, 2015

Project Description:

The proposed project sits on .617 acres of land formerly occupied by a single story 3,000 SF restaurant and 3 storage sheds in the 3800 block of East Washington Avenue with the nearest cross street being Mendota Street. The proposed building is a single story, 8,688 GSF multi-tenant retail building. The owner and primary tenant is to be Erik's Bikes, Boards and Skis.

A primary operational/use requirement for the facility is to allow for a large truck and 53' trailer to enter and exit the site during business hours. The hours of operation for Erik's are M-F 10am – 9pm, Sat. 9am – 7pm and Sunday 11am – 5pm.

Zoning:

The Property is located in the CC-T 'Commercial Corridor- Transitional' district. This district was established to recognize commercial corridors that remain largely auto-oriented, and encourage transformation into mixed-use corridors that are equally conducive to pedestrian, bicycle, transit and autos. Additionally, the property is located in a designated Urban Design District. Specifically UDD No. 5, per MGO Sec. 33.24(12).

The design solution aims at improving the quality of the landscaping, architecture and urban environment. Permitted uses include a wide range of office, retail, commercial recreation, lodging and civic uses are permitted. Specific permitted uses include - Retail sales and services: Business sales and service; sporting goods store; Food and Beverages: Coffee shop; Restaurant; Tavern. There are no minimum auto parking stalls required and 2 bike stalls required. However we are providing 19 auto parking stalls and 9 bicycle stalls. Maximum lot coverage = 85%. The lot area is 26,877 and 4,133.9 SF of this area(15.4%) is pervious. 546 SF is to be pervious pavers as indicated on the site plan.

Design:

The owner and primary tenant have developed a brand that is unique to them which we are looking to maintain in the architectural design. The arched endcap, red accents with a clean, more modern yet tech design sensibility while providing differentiation and massing articulation for multiple users is critical. The primary materials are, 30-32" smooth face large format cast stone base 28-34" above grade; three color ways and formats of smooth satin finish, concealed fastener Nichiha fiber cement board rain screen assembly in 18" x 3' – 6' sizes; clear anodized aluminum storefront, warm wood accents exterior wall areas, painted steel channel entry brows and architectural metal panel over building entry transoms.

The site design is largely driven by integrating the clearances and turning radius of the required delivery trucks; the placement of the building toward the primary street and the parking in the rear of the site allowing for auto traffic to enter either side of the building and circulate around the building.

Organizational Structure:

Owner:	Erik Saltvold Erik's Bikes	Architect:	Iconica 901 Deming Way Madison, WI 53717 608-664-3535 Contact: John Seamon John.seamon@iconicacreates.com
Engineer:	Iconica 901 Deming Way Madison, WI 53717 608-664-3535 Contact: Patrick Eagan	Civil Design:	JSD Professional Services, Inc. 161 Horizon Drive, Suite 101 Verona, WI 53593 Contact: Mike Grzesiak
Landscape Architect:	McKay Nursery Madison, WI 53717 608-843-0030 Contact: Eric Seidl	Signage:	Graphic House 9204 Packer Drive Wausau, WI 54401 Contact: Mike Johnson 715.842.0402

Project Schedule:	Construction Start – Spring 2015.
Estimated Value of land:	\$190,000.00
Estimated Project Cost:	\$1,000,000.00
Public Subsidy Requested:	None
Number of Construction and Full time Equivalent Jobs Created:	45

Thank you for your time in reviewing our proposal.

Sincerely,



John Seamon
Architectural Director
Iconica

