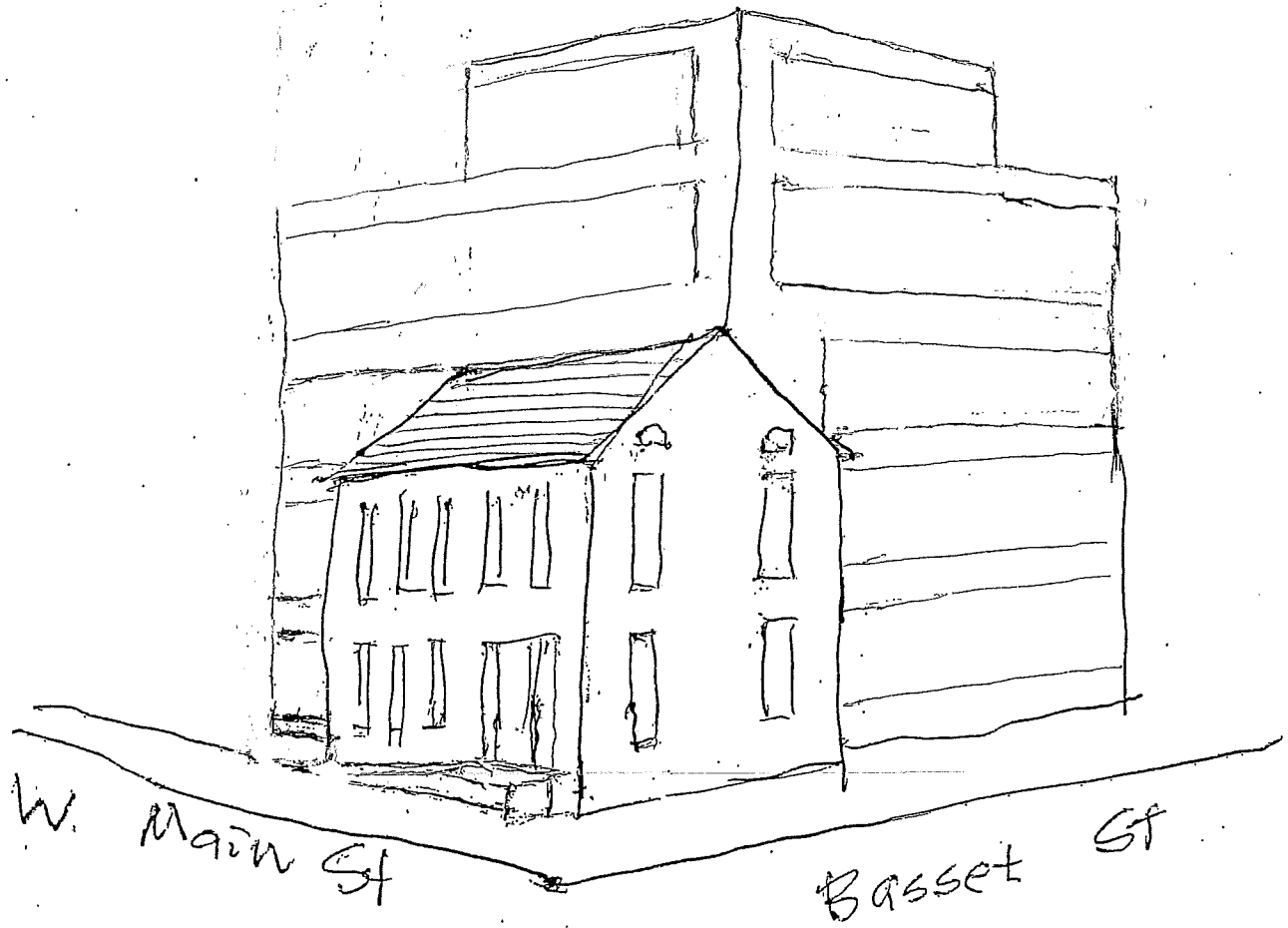
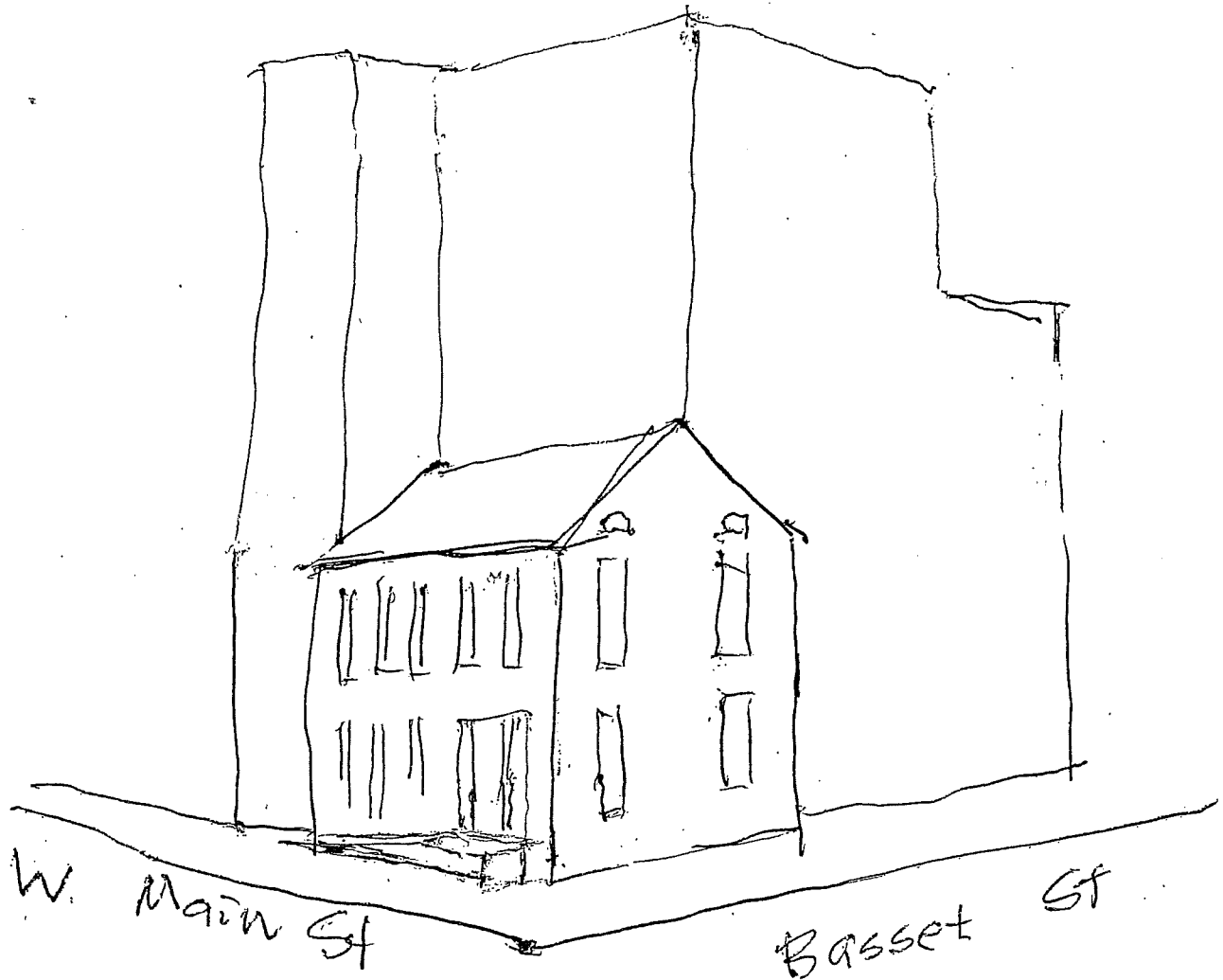


preserving corner walls
of historic 502 W. Main St (1867)



502 W. Main St.
Alternate design (A)

preserving corner walls
of historic 502 W. Main St (1867)



502 W. Main St.
ALternate design (B)

Why not an alternate design

that preserves shell of original

1867 building? The 1867 shell could serve as a unique 2 story entrance lobby to a re-configured apartment design

• no underground parking was planned for 502 W. Main or Tuscan Place (no onsite parking either)

• 502 already sits at the corner of W. Main & Basset St.

(this leaves the entire rest of the site available for development.

• save the 2 corner walls (along W. Main St. & Basset St)

• no significant structural damage has been cited re 502 W. Main St.

