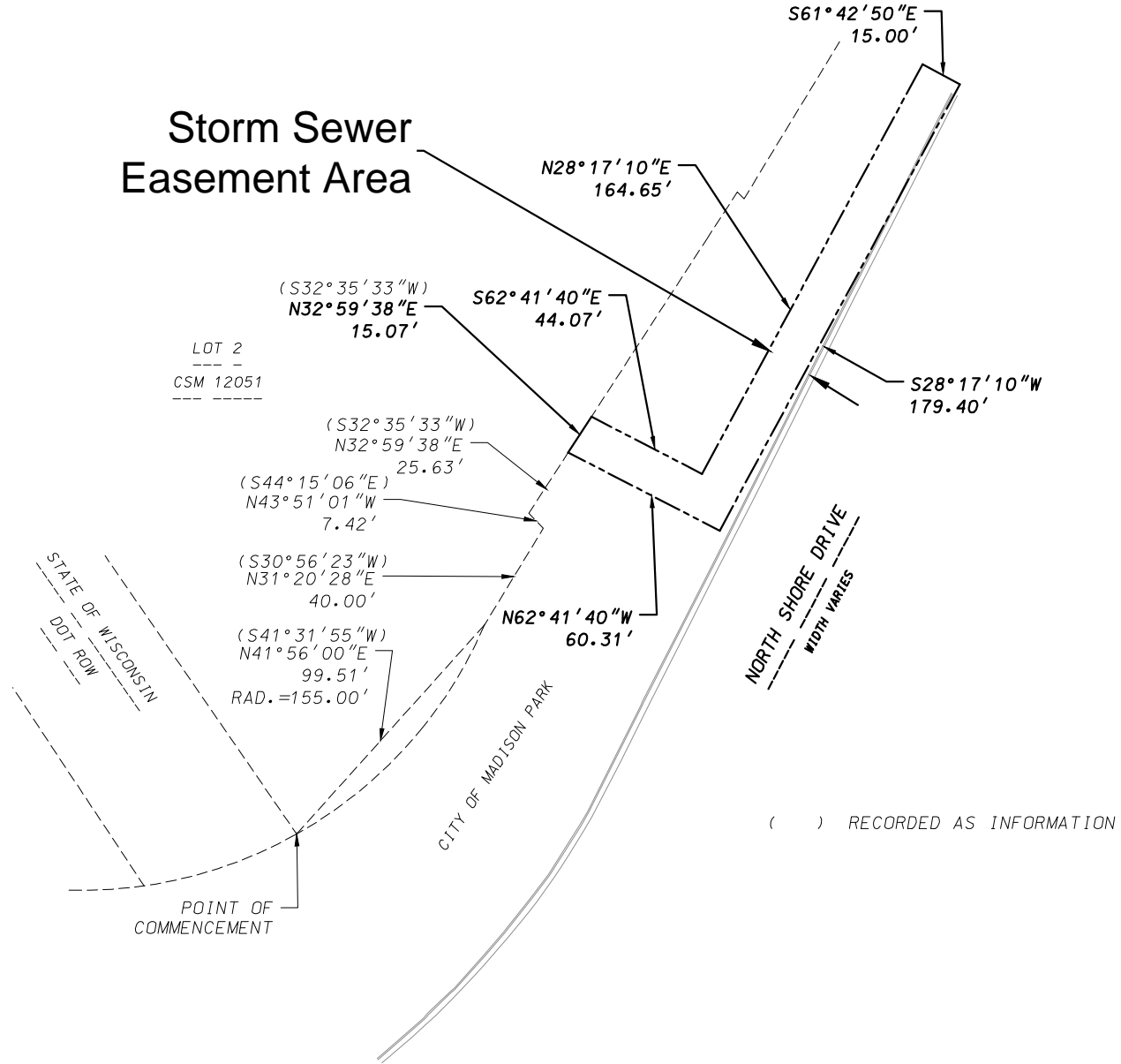


EXHIBIT B

Storm Sewer Easement Area



D'ONOFRIO KOTTKE AND ASSOCIATES, INC.
7530 Westward Way, Madison, WI 53717
Phone: 608.833.7530 • Fax: 608.833.1089
YOUR NATURAL RESOURCE FOR LAND DEVELOPMENT



0 60
Scale 1" = 60'

DATE: 05-27-14

F.N.: 13-05-156

U:/USER/1305156/DRAWINGS/STORM SEWER EASEMENT.DWG