

BREESE STEVENS FIELD

CITY OF MADISON, WISCONSIN

FIELD IMPROVEMENTS



One Honey Creek Corporate Center
 135 South 84th Street, Suite 401
 Milwaukee, WI 53224-1489
 414.759.1500
 414.759.0037 fax

www.graef-usa.com

CONSULTANTS:

PROJECT TITLE:
 BREESE STEVENS FIELD
 MADISON, WISCONSIN

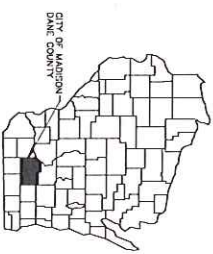
NO. DATE REVISIONS BY ISSUE:
 90% REVIEW SUBMITTAL
 NOT FOR CONSTRUCTION

PROJECT INFORMATION:
 PROJECT NUMBER: 20190215100
 DATE: 3/29/14
 DRAWN BY: FJO
 CHECKED BY: JMH
 APPROVED BY: JRP
 SCALE: AS SHOWN
 FILE PATH: G:\01796\m.dwg

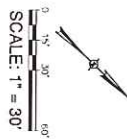
SHEET TITLE:
 TITLE SHEET

SHEET NUMBER:
 T001

SHEET NUMBER	TITLE SHEET
SHEET T001	PROGRAMME SUMMARY
SHEET C001	PROPOSED CONSTRUCTION STAGING PLAN
SHEET C002	EROSION CONTROL PLAN
SHEET C003	SITE LAYOUT AND STAGING PLAN
SHEET C004	SITE GRADING AND DRAINAGE PLAN
SHEET C005	CONSTRUCTION DETAILS
SHEET C006	CONSTRUCTION DETAILS
SHEET C007	CONSTRUCTION DETAILS
SHEET C008	CONSTRUCTION DETAILS
SHEET C009	CONSTRUCTION DETAILS
SHEET C010	IRRIGATION PLAN



VICINITY MAP



CONSULTANTS:

PROJECT TITLE:
 BRESE STEVENS FIELD
 MADISON, WISCONSIN

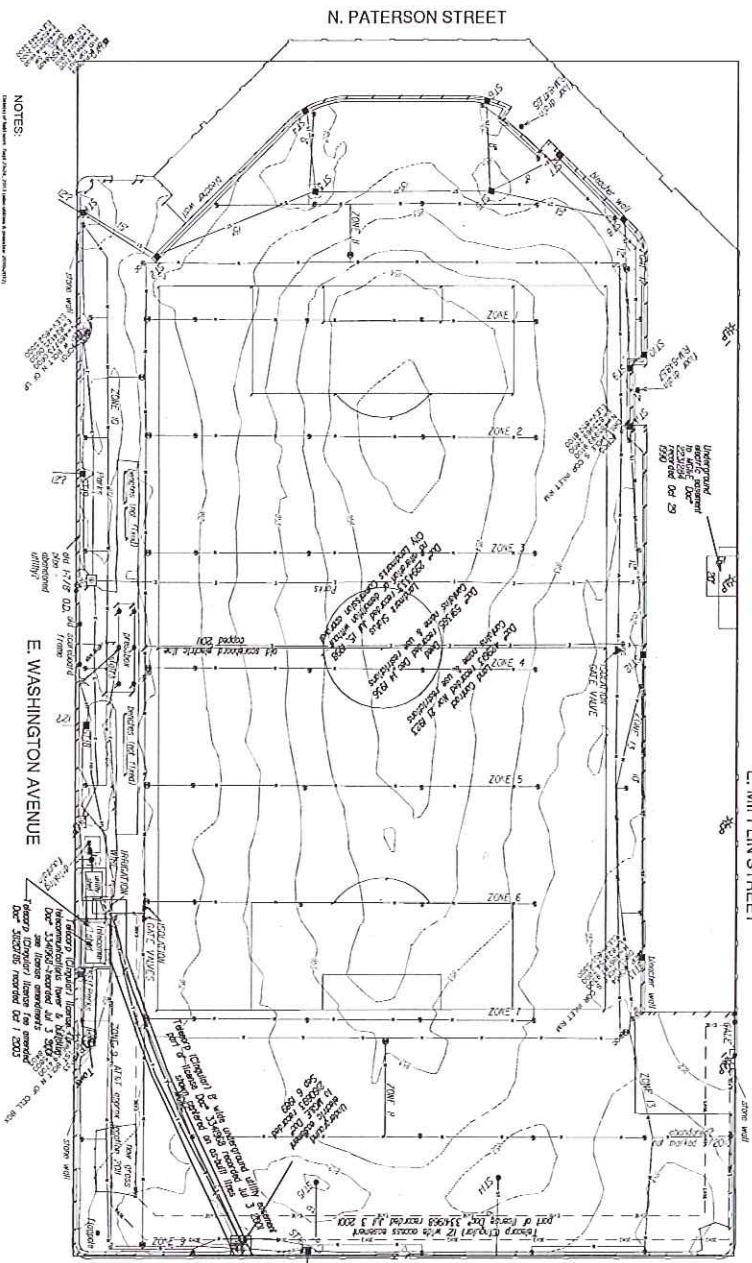
NO. DATE REVISIONS BY
 90% REVIEW SUBMITTAL
 NOT FOR CONSTRUCTION

PROJECT INFORMATION:
 PROJECT NUMBER: 20130215100
 DATE: 3/28/14
 DRAWN BY: FJO
 CHECKED BY: JMH
 APPROVED BY: JJP
 SCALE: AS SHOWN
 FILE PATH: C:\99 0891 SURVEY\919

SHEET TITLE:
 TOPOGRAPHIC SURVEY

SHEET NUMBER:

C001



SYMBOL	DESCRIPTION
ST1	1" = 30' Contour Interval
ST2	1" = 30' Contour Interval
ST3	1" = 30' Contour Interval
ST4	1" = 30' Contour Interval
ST5	1" = 30' Contour Interval
ST6	1" = 30' Contour Interval
ST7	1" = 30' Contour Interval
ST8	1" = 30' Contour Interval
ST9	1" = 30' Contour Interval
ST10	1" = 30' Contour Interval
ST11	1" = 30' Contour Interval
ST12	1" = 30' Contour Interval
ST13	1" = 30' Contour Interval
ST14	1" = 30' Contour Interval
ST15	1" = 30' Contour Interval
ST16	1" = 30' Contour Interval
ST17	1" = 30' Contour Interval
ST18	1" = 30' Contour Interval
ST19	1" = 30' Contour Interval
ST20	1" = 30' Contour Interval
ST21	1" = 30' Contour Interval
ST22	1" = 30' Contour Interval
ST23	1" = 30' Contour Interval
ST24	1" = 30' Contour Interval
ST25	1" = 30' Contour Interval
ST26	1" = 30' Contour Interval
ST27	1" = 30' Contour Interval
ST28	1" = 30' Contour Interval
ST29	1" = 30' Contour Interval
ST30	1" = 30' Contour Interval
ST31	1" = 30' Contour Interval
ST32	1" = 30' Contour Interval
ST33	1" = 30' Contour Interval
ST34	1" = 30' Contour Interval
ST35	1" = 30' Contour Interval
ST36	1" = 30' Contour Interval
ST37	1" = 30' Contour Interval
ST38	1" = 30' Contour Interval
ST39	1" = 30' Contour Interval
ST40	1" = 30' Contour Interval
ST41	1" = 30' Contour Interval
ST42	1" = 30' Contour Interval
ST43	1" = 30' Contour Interval
ST44	1" = 30' Contour Interval
ST45	1" = 30' Contour Interval
ST46	1" = 30' Contour Interval
ST47	1" = 30' Contour Interval
ST48	1" = 30' Contour Interval
ST49	1" = 30' Contour Interval
ST50	1" = 30' Contour Interval

- LEGEND**
- ▲ CONTROL POINT
 - ▽ FERT. HYDRANT
 - WATER VALVE
 - ⊙ LIGHT POLE
 - ⊕ ELECTRIC MANHOLE
 - ⊖ STORM INLET
 - SPRINKLER
 - ⊗ TELEPHONE FOOTCUT
 - ⊗ ELECTRIC FOOTCUT
 - ⊗ FIBER OPTIC MANHOLE
 - ⊗ BRIDGION VALVE
 - GATE VALVE
 - ▲ REGULATION VALVE
 - ▲ ISOLATION VALVE
 - DIBIRD ELECTRIC LINE
 - DIBIRD TELEPHONE LINE
 - DIBIRD FIBER OPTIC LINE
 - DIBIRD WATER LINE
 - DIBIRD STORM SINKER

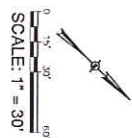
NOTES:

1. THIS SURVEY WAS CONDUCTED IN ACCORDANCE WITH THE SURVEYING ACT AND THE RULES OF THE BOARD OF SURVEYING AND MAPPING.
2. THE SURVEY WAS CONDUCTED ON THE DATE INDICATED ON THE TITLE SHEET.
3. THE SURVEY WAS CONDUCTED BY THE SURVEYOR INDICATED ON THE TITLE SHEET.
4. THE SURVEY WAS CONDUCTED IN ACCORDANCE WITH THE SURVEYING ACT AND THE RULES OF THE BOARD OF SURVEYING AND MAPPING.
5. THE SURVEY WAS CONDUCTED ON THE DATE INDICATED ON THE TITLE SHEET.
6. THE SURVEY WAS CONDUCTED BY THE SURVEYOR INDICATED ON THE TITLE SHEET.
7. THE SURVEY WAS CONDUCTED IN ACCORDANCE WITH THE SURVEYING ACT AND THE RULES OF THE BOARD OF SURVEYING AND MAPPING.
8. THE SURVEY WAS CONDUCTED ON THE DATE INDICATED ON THE TITLE SHEET.
9. THE SURVEY WAS CONDUCTED BY THE SURVEYOR INDICATED ON THE TITLE SHEET.
10. THE SURVEY WAS CONDUCTED IN ACCORDANCE WITH THE SURVEYING ACT AND THE RULES OF THE BOARD OF SURVEYING AND MAPPING.

NOTES:

1. THIS SURVEY WAS CONDUCTED IN ACCORDANCE WITH THE SURVEYING ACT AND THE RULES OF THE BOARD OF SURVEYING AND MAPPING.
2. THE SURVEY WAS CONDUCTED ON THE DATE INDICATED ON THE TITLE SHEET.
3. THE SURVEY WAS CONDUCTED BY THE SURVEYOR INDICATED ON THE TITLE SHEET.
4. THE SURVEY WAS CONDUCTED IN ACCORDANCE WITH THE SURVEYING ACT AND THE RULES OF THE BOARD OF SURVEYING AND MAPPING.
5. THE SURVEY WAS CONDUCTED ON THE DATE INDICATED ON THE TITLE SHEET.
6. THE SURVEY WAS CONDUCTED BY THE SURVEYOR INDICATED ON THE TITLE SHEET.
7. THE SURVEY WAS CONDUCTED IN ACCORDANCE WITH THE SURVEYING ACT AND THE RULES OF THE BOARD OF SURVEYING AND MAPPING.
8. THE SURVEY WAS CONDUCTED ON THE DATE INDICATED ON THE TITLE SHEET.
9. THE SURVEY WAS CONDUCTED BY THE SURVEYOR INDICATED ON THE TITLE SHEET.
10. THE SURVEY WAS CONDUCTED IN ACCORDANCE WITH THE SURVEYING ACT AND THE RULES OF THE BOARD OF SURVEYING AND MAPPING.

One Henry Creek Corporate Center
 125 South 84th Street, Suite 401
 Milwaukee, WI 53214-4699
 414 / 259 0300
 414 / 259 0301 FAX
 www.graef-usa.com



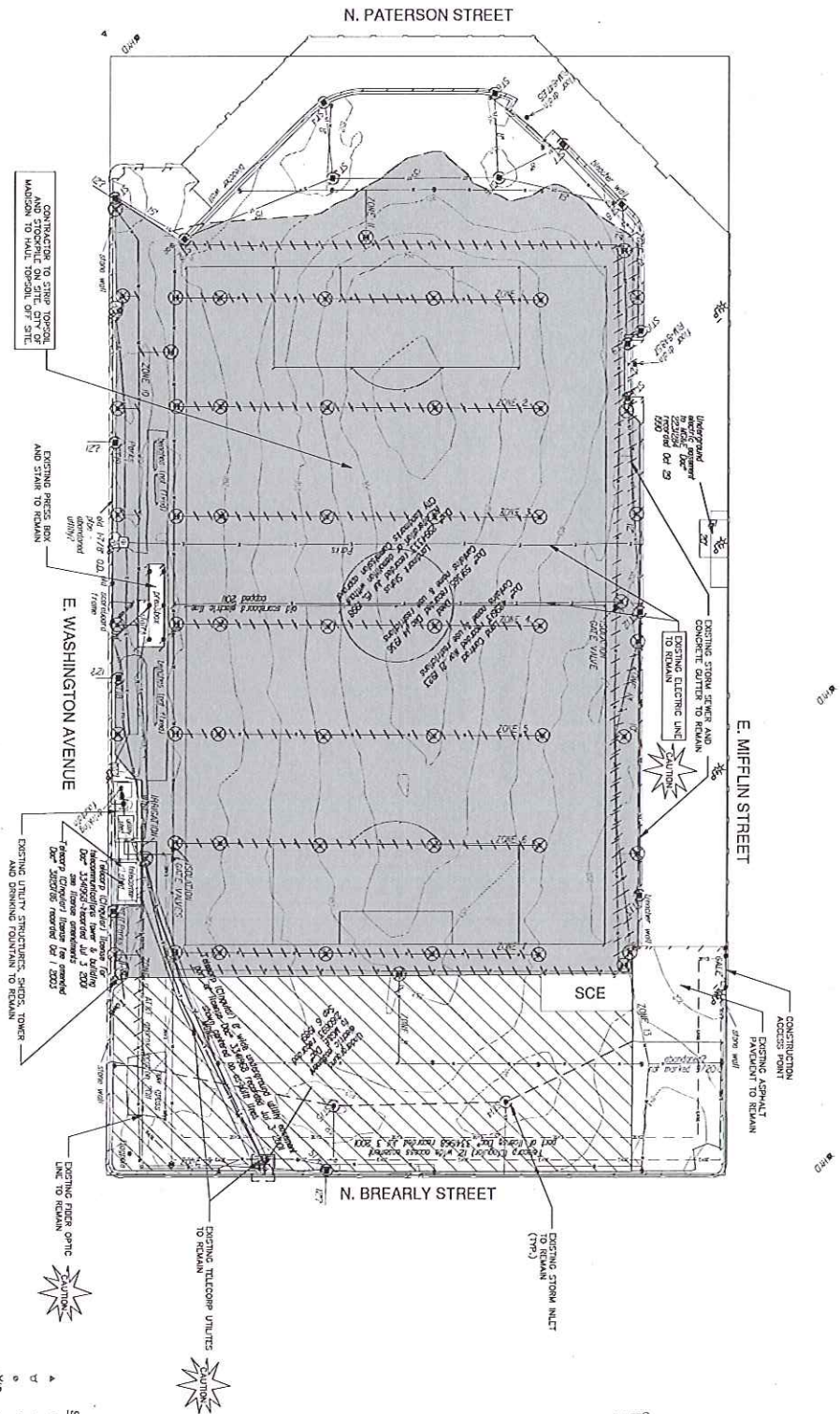
CONSULTANTS:
 BRESEE STEIGENS FIELD
 MADISON, WISCONSIN

NO.	DATE	REVISIONS	ISSUE
1		90% REVIEW SUBMITTAL	
2		NOT FOR CONSTRUCTION	

PROJECT INFORMATION:
 PROJECT NUMBER: 20190215.00
 DATE: 3/28/14
 DRAWN BY: FKO
 CHECKED BY: JMH
 APPROVED BY: JFP
 SCALE: AS SHOWN
 FILE PATH: C:\B\C100\2014

SHEET TITLE:
 DEMOLITION AND CONSTRUCTION
 STAGING PLAN

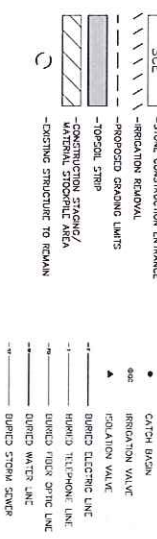
SHEET NUMBER:
C100



NOTICE:
 THE CONTRACTOR SHALL VERIFY ALL EXISTING UTILITIES AND STRUCTURES TO BE REMOVED OR RELOCATED. THE CONTRACTOR SHALL BE RESPONSIBLE FOR OBTAINING ALL NECESSARY PERMITS AND APPROVALS FROM THE CITY OF MADISON. THE CONTRACTOR SHALL BE RESPONSIBLE FOR OBTAINING ALL NECESSARY PERMITS AND APPROVALS FROM THE CITY OF MADISON. THE CONTRACTOR SHALL BE RESPONSIBLE FOR OBTAINING ALL NECESSARY PERMITS AND APPROVALS FROM THE CITY OF MADISON.

- GENERAL NOTES**
- THE BEST SURVEY WAS PROVIDED BY CITY OF MADISON. UTILITIES AND STRUCTURES HAVE BEEN SHOWN TO A LOCATION AND TO AVOID DAMAGE HERETO.
 - REFER TO SHEET C001 FOR DIMENSIONS, DATA, AND TOPOGRAPHIC ELEVATIONS.
 - CONTRACTOR SHALL VERIFY LOCATION OF PROPOSED WORK TO CORRESPONDING WORK.

- REMOVAL NOTES**
- CONTRACTOR SHALL VERIFY ALL EXISTING LINES NOTED FOR REMOVAL. EXISTING UTILITIES THAT ARE TO BE REMOVED SHALL BE REMOVED TO THE ALONG REMOVED UTILITY LINES SHALL BE REMOVED IN THEIR ENTIRETY.
 - THE PUBLIC IS RESPONSIBLE FOR SECURING THE JOB SITE TO PROTECT FOR BEST CONTROL.
 - CONTRACTOR SHALL REMOVE REBAR, CURB AND GUTTER, TRUSS, LAMINAR AND A REBAR FORMING STRUCTURE, OR ANY OTHER ITEM THAT WAS DAMAGED AND NOT CALLED OUT FOR REMOVAL OR RELOCATED. CONTRACTOR SHALL REMOVE ALL MATERIALS TO THE STREET. THE REMOVAL OF CURB, GUTTER AND ADDITIONAL COST TO THE OWNER.





One Henry Cook Corporate Center
125 South 4th Street, Suite 401
Madison, WI 53714-1469
414 / 259 1500
414 / 259 0037 fax
www.graf-usa.com

CONSULTANTS:

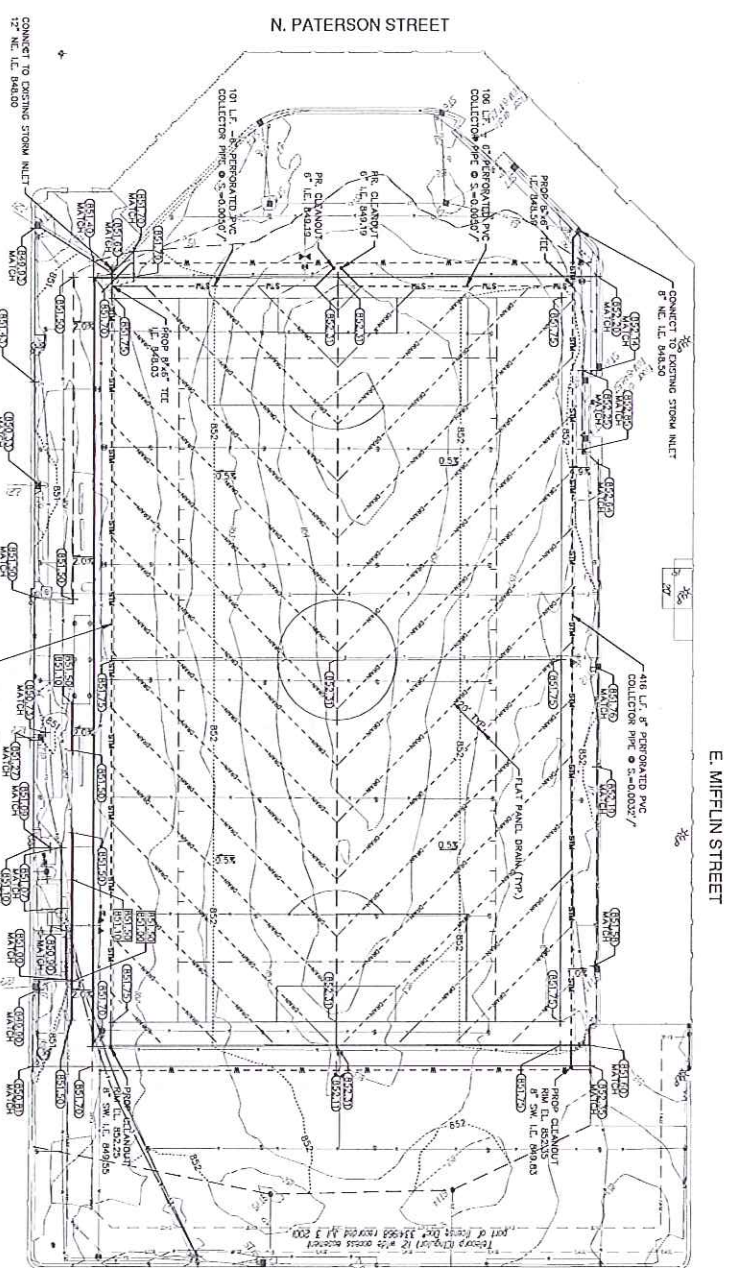
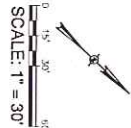
PROJECT TITLE:
BREES STEVENS FIELD
MADISON, WISCONSIN

NO. DATE REVISIONS BY
80% REVIEW SUBMITTAL
NOT FOR CONSTRUCTION

PROJECT INFORMATION:
PROJECT NUMBER: 20101213.00
DATE: 3/29/14
DRAWN BY: FJO
CHECKED BY: JMH
APPROVED BY: JFP
SCALE: AS SHOWN
FILE PATH: C:\081-DRAWING\074

SHEET TITLE:
SITE GRADING AND DRAINAGE PLAN

SHEET NUMBER:
C400



- NOTES:**
1. THE DATE SURVEY WAS PREPARED BY CITY OF MADISON UTILITIES AND STRUCTURES HAVE BEEN ADDED TO A CONFORMANCE OF THE CITY OF MADISON ENGINEER'S LOCATION AND TO AVOID DAMAGE, HURDLE, AND REFER TO SHEET C001 FOR BENCHMARK, DATUM, AND TOPOGRAPHIC ELEMENTS.
 2. CONTRACTOR SHALL VERIFY LOCATION OF PROPOSED WORK TO CONFORMANCE WORK.
 3. CONTRACTOR SHALL VERIFY LOCATION OF PROPOSED WORK TO CONFORMANCE WORK.

- GENERAL NOTES:**
1. THE DATE SURVEY WAS PREPARED BY CITY OF MADISON UTILITIES AND STRUCTURES HAVE BEEN ADDED TO A CONFORMANCE OF THE CITY OF MADISON ENGINEER'S LOCATION AND TO AVOID DAMAGE, HURDLE, AND REFER TO SHEET C001 FOR BENCHMARK, DATUM, AND TOPOGRAPHIC ELEMENTS.
 2. CONTRACTOR SHALL VERIFY LOCATION OF PROPOSED WORK TO CONFORMANCE WORK.
 3. CONTRACTOR SHALL VERIFY LOCATION OF PROPOSED WORK TO CONFORMANCE WORK.

- GRADING NOTES:**
1. ADA REGULATIONS REQUIRE A MAXIMUM SLOPE OF 1:20 (5% SLOPE OF 1/2" PER FOOT) FOR THE WALKWAY ROUTE.
 2. PROPOSED SHOT GRADES ARE TO TOP OF INFL WITHIN SMOOTHING TOP CANALS.

- LEGEND:**
- ▲ CONTROL POINT
 - ◆ FINE HYDRAUNT
 - EX WATER VALVE
 - EX CATCH BASIN
 - ▲ EX ELECTRIC MANHOLE
 - EX STORM INLET
 - EX SPRINKLER
 - EX TELEPHONE POCKET
 - EX ELECTRIC POCKET
 - EX FIBER OPTIC POCKET
 - EX IRIGATION VALVE
 - EX CATCH BASIN
 - EX IRRIGATION VALVE
 - ▲ EX ISOLATION VALVE
 - EX DURED ELECTRIC LINE
 - EX BURIED TELEPHONE LINE
 - EX BURIED FIBER OPTIC LINE
 - EX IRRIGATION WATER LINE
 - EX BURIED STORM SEWER
 - EX BURIED STORM WATER PANEL DRAIN
 - EX STORM SEWER
 - PR CLEANOUT
 - PR CHIMNEY
 - PR STORM DRAIN LINE
 - PR RETAINING WALL
 - PR SPOT GRADE
 - PR TOP OF WALL
 - PR BOTTOM OF WALL

PROJECT INFORMATION:
PROJECT NUMBER: 20101213.00
DATE: 3/29/14
DRAWN BY: FJO
CHECKED BY: JMH
APPROVED BY: JFP
SCALE: AS SHOWN
FILE PATH: C:\081-DRAWING\074

SHEET TITLE:
SITE GRADING AND DRAINAGE PLAN

SHEET NUMBER:
C400

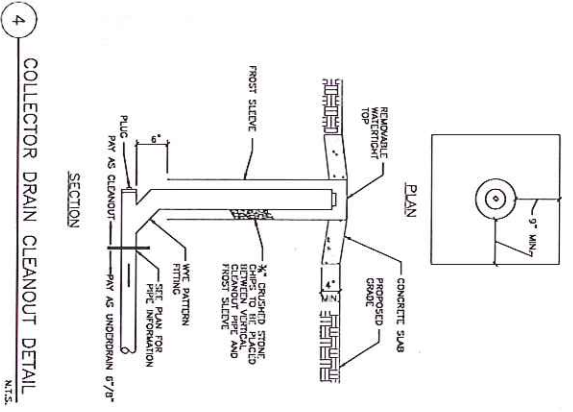
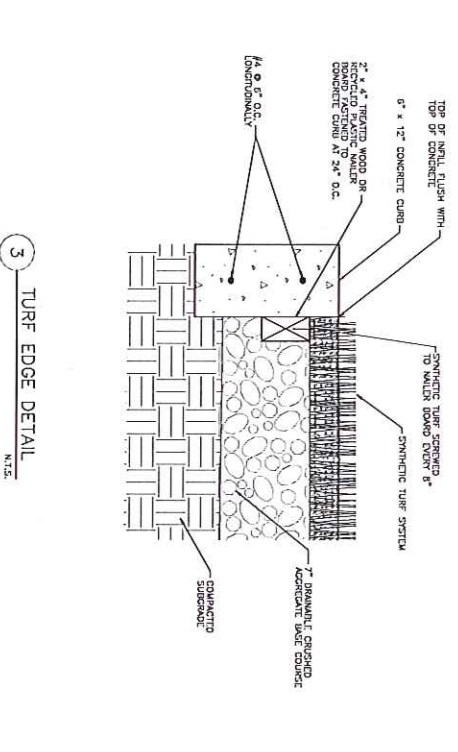
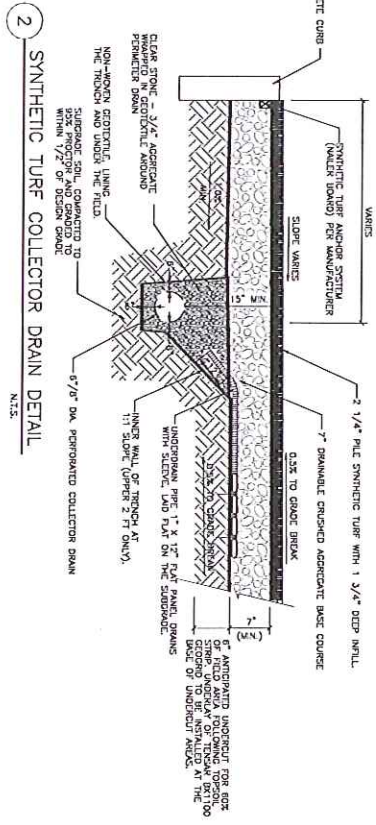
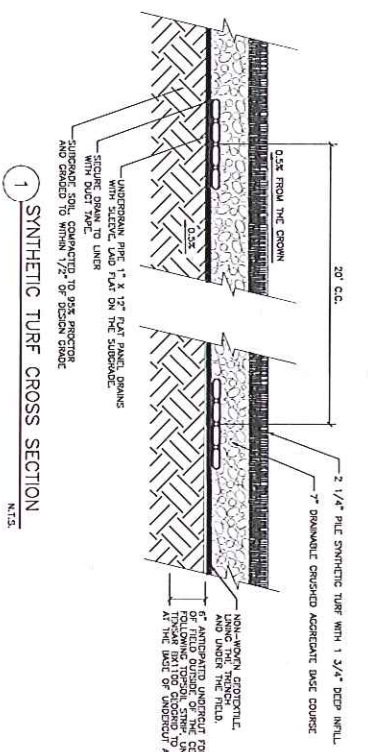
One Honey Creek Corporate Center
 125 South 84th Street, Suite 401
 Milwaukee, WI 53214-4889
 414 / 259 1500
 414 / 259 0077 fax

www.graef-usa.com

CONSULTANTS:

PROJECT TITLE:
 BREESSE STEIGENS FIELD
 MADISON, WISCONSIN

ISSUE:
 NO. DATE REVISIONS BY
 80% REVIEW SUBMITTAL
 NOT FOR CONSTRUCTION



PROJECT INFORMATION:
 PROJECT NUMBER: 20130215100
 DATE: 3/28/14
 DRAWN BY: FKO
 CHECKED BY: JMH
 APPROVED BY: JFP
 SCALE: AS SHOWN
 FILE PATH: C:\08 CHAS DETAILS 078

SHEET TITLE:
 CONSTRUCTION DETAILS
 SHEET NUMBER:

C900

One Henry Cook Corporate Center
 125 South 84th Street, Suite 401
 Milwaukee, WI 53214-1469
 414 / 259 1500
 414 / 259 0037 fax

www.graef-usa.com

CONSULTANTS:

PROJECT TITLE:
 BRESEE STEVENS FIELD
 MADISON, WISCONSIN

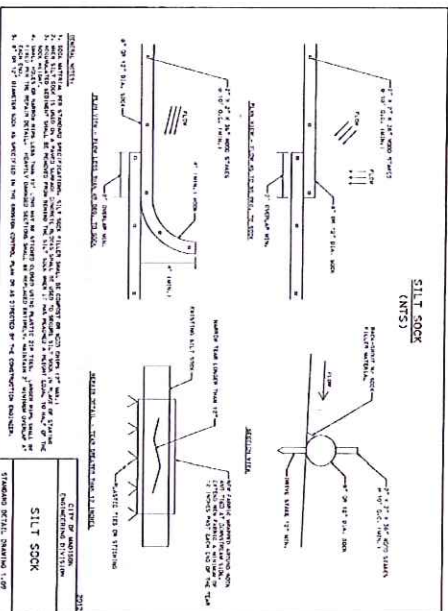
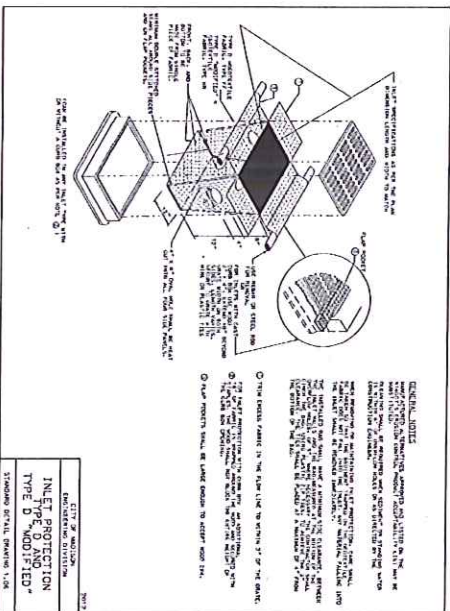
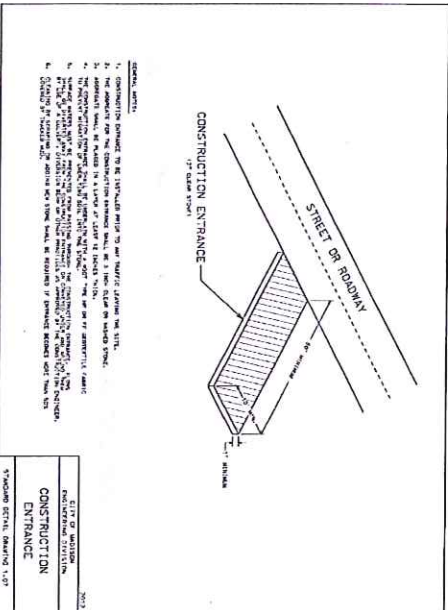
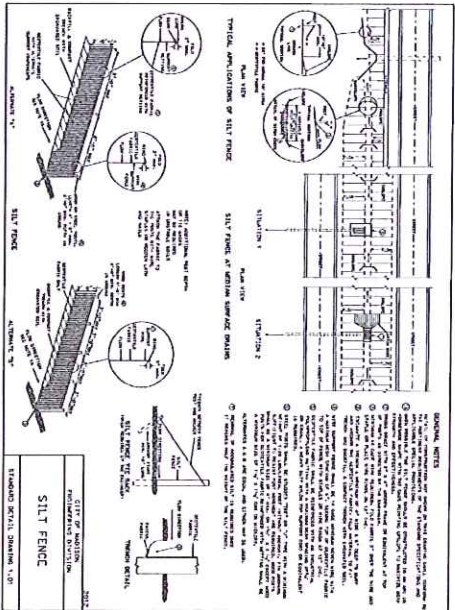
NO. DATE REVISIONS BY
 90% REVIEW SUBMITTAL
 NOT FOR CONSTRUCTION

PROJECT INFORMATION:
 PROJECT NUMBER: 20130215.00
 DATE: 3/28/14
 DRAWN BY: FKO
 CHECKED BY: JMH
 APPROVED BY: JPP
 SCALE: AS SHOWN
 FILE PATH: C:\9000 DETAILS\2013

SHEET TITLE:
 CONSTRUCTION DETAILS

SHEET NUMBER:

C901



One Henry Crook Corporate Center
 125 South 84th Street, Suite 401
 Milwaukee, WI 53214-1689
 414 / 259 8300
 414 / 259 8301 fax
 www.graber-usa.com

CONSULTANTS:

PROJECT TITLE:
 BRESS STEVENS FIELD
 MADISON, WISCONSIN

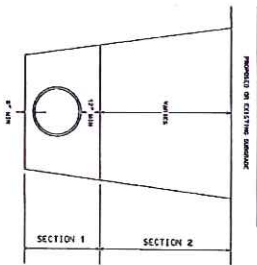
NO. DATE REVISIONS BY
 98% REVIEW SUBMITTAL
 NOT FOR CONSTRUCTION

PROJECT INFORMATION:
 PROJECT NUMBER: 20130215.00
 DATE: 3/28/14
 DRAWN BY: FKO
 CHECKED BY: JMH
 APPROVED BY: JFP
 SCALE: AS SHOWN
 FILE PATH: C:\P_000\30215\00

SHEET TITLE:
 CONSTRUCTION DETAILS

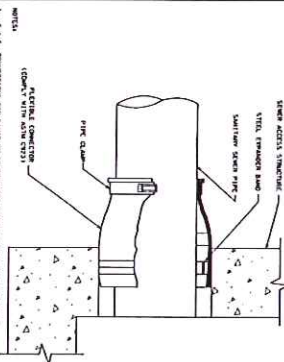
SHEET NUMBER:

C902



SECTION 1: PROPOSED SECTION THROUGH WALL. A cross-section diagram showing a wall with a 12 inch diameter hole. The wall is divided into SECTION 1 and SECTION 2. Labels include 'PROPOSED SECTION THROUGH WALL', '12\"/>

SECTION 2: PROPOSED SECTION THROUGH WALL. A cross-section diagram showing a wall with a 12 inch diameter hole. The wall is divided into SECTION 1 and SECTION 2. Labels include 'PROPOSED SECTION THROUGH WALL', '12\"/>



SECTION 2: FLEXIBLE PIPE TO 5\"/>

SECTION 3: FLEXIBLE PIPE TO 5\"/>

One Honey Creek Corporate Center
 125 South 84th Street, Suite 401
 Madison, WI 53714-4469
 414.729.1500
 414.729.0137 fax

www.gr2ef.com

CONSULTANTS:

PROJECT TITLE:
 BRESEE STEVENS FIELD
 MADISON, WISCONSIN

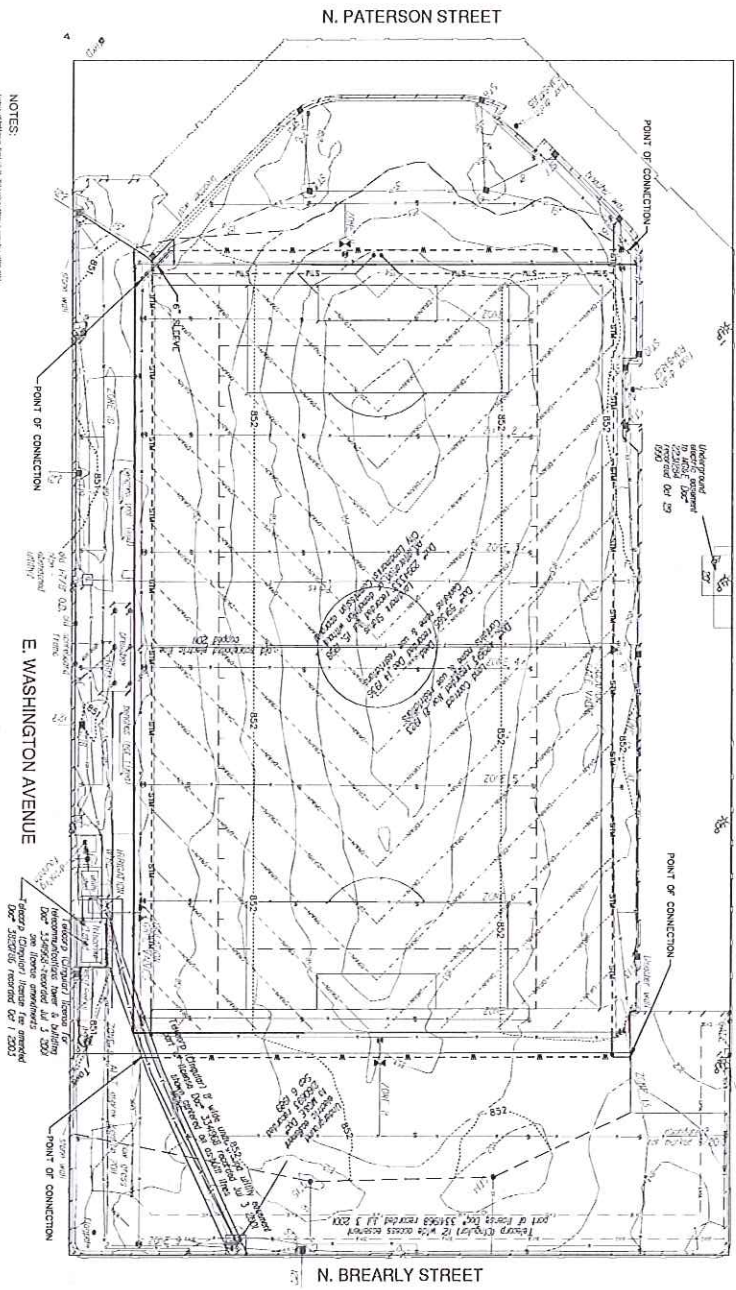
NO.	DATE	REVISIONS BY	ISSUE
001			ISSUE FOR CONSTRUCTION

PROJECT INFORMATION:

PROJECT NUMBER: 20130215.00
DATE: 3/28/14
DRAWN BY: FJO
CHECKED BY: JMH
APPROVED BY: JFP
SCALE: AS SHOWN
FILE PATH: C:\98130\LANDSCAPE_015

IRRIGATION PLAN SHEET TITLE

SHEET NUMBER: **L100**



- LEGEND**
- PROPOSED BRIGATION SYSTEM
 - PROPOSED DUCK COUPLER VALVE
 - PROPOSED MAIN LINE GATE VALVE
 - - - PROPOSED GRADING LIMIT LINE
- GENERAL NOTES**
- THE DATE SURVEY WAS PERFORMED BY CITY OF MADISON LANDSCAPE ARCHITECTURE AND CONSTRUCTION SERVICES, INC. SHALL BE THE RESPONSIBLE ENGINEER OF RECORD AND SHALL BE THE LOCATION AND TO AVOID DAMAGE THERE TO.
 - REFER TO SHEET 0001 FOR DIMENSIONS, DATA, AND TOPOGRAPHIC ELEMENTS.
 - CONTRACTOR SHALL VERIFY LOCATION OF PROPOSED WORK TO CORRESPOND TO THE DIMENSIONS AND TOPOGRAPHIC WORK.

NOTES:

1. THE DATE SURVEY WAS PERFORMED BY CITY OF MADISON LANDSCAPE ARCHITECTURE AND CONSTRUCTION SERVICES, INC. SHALL BE THE RESPONSIBLE ENGINEER OF RECORD AND SHALL BE THE LOCATION AND TO AVOID DAMAGE THERE TO.

2. REFER TO SHEET 0001 FOR DIMENSIONS, DATA, AND TOPOGRAPHIC ELEMENTS.

3. CONTRACTOR SHALL VERIFY LOCATION OF PROPOSED WORK TO CORRESPOND TO THE DIMENSIONS AND TOPOGRAPHIC WORK.