

PLOT SCALE:

PLOT NAME:

REV. DATE:

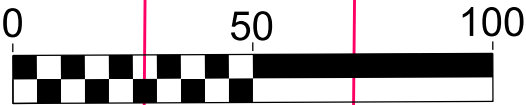
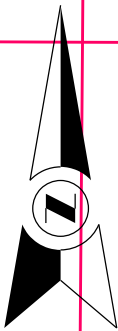
ORIGINATOR: CITY OF MADISON, TRAFFIC ENG. DIV.

FARLEY AVE

GRAND AVE

SPEED HUMPS SHALL NOT BE LOCATED IN FRONT OF DRIVEWAYS NOR ON ANY CASTINGS. CONTACT THE ENGINEER IF CONFLICTS OCCUR.

SPEED HUMPS SHALL BE CONSTRUCTED IN ACCORDANCE WITH THE CITY OF MADISON STANDARD DETAIL DRAWING NO. 4.10



THIS PLAN WAS PREPARED FROM AERIAL PHOTOGRAPHS AND MAY NOT BE COMPLETE NOR ACCURATE. CHECK FOR CONFLICTS PRIOR TO CONSTRUCTION.

CHAMBERLAIN AV	SHEET NO. 1
CONSTRUCTION	CITY OF MADISON

2650

2646

2644

2640

2632

2630

2626

2622

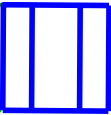
2620

2610

2606

2602

CHAMBERLAIN AVE



CENTER HUMPS BETWEEN DRIVEWAYS

CHAMBERLAIN AVE

2653

2641

2635

2633

2631

2629

2627

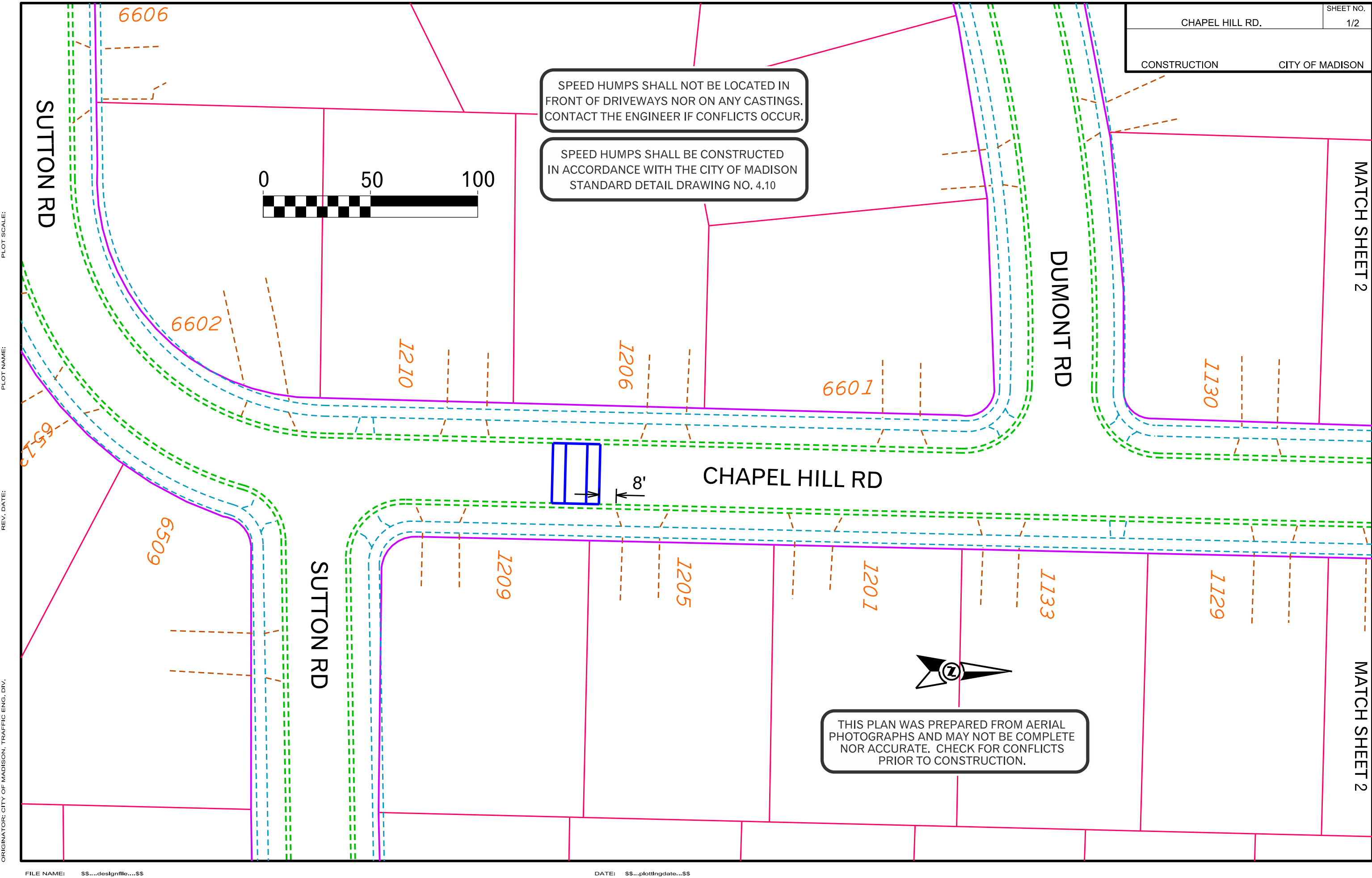
2623

2617

2615

2611

220



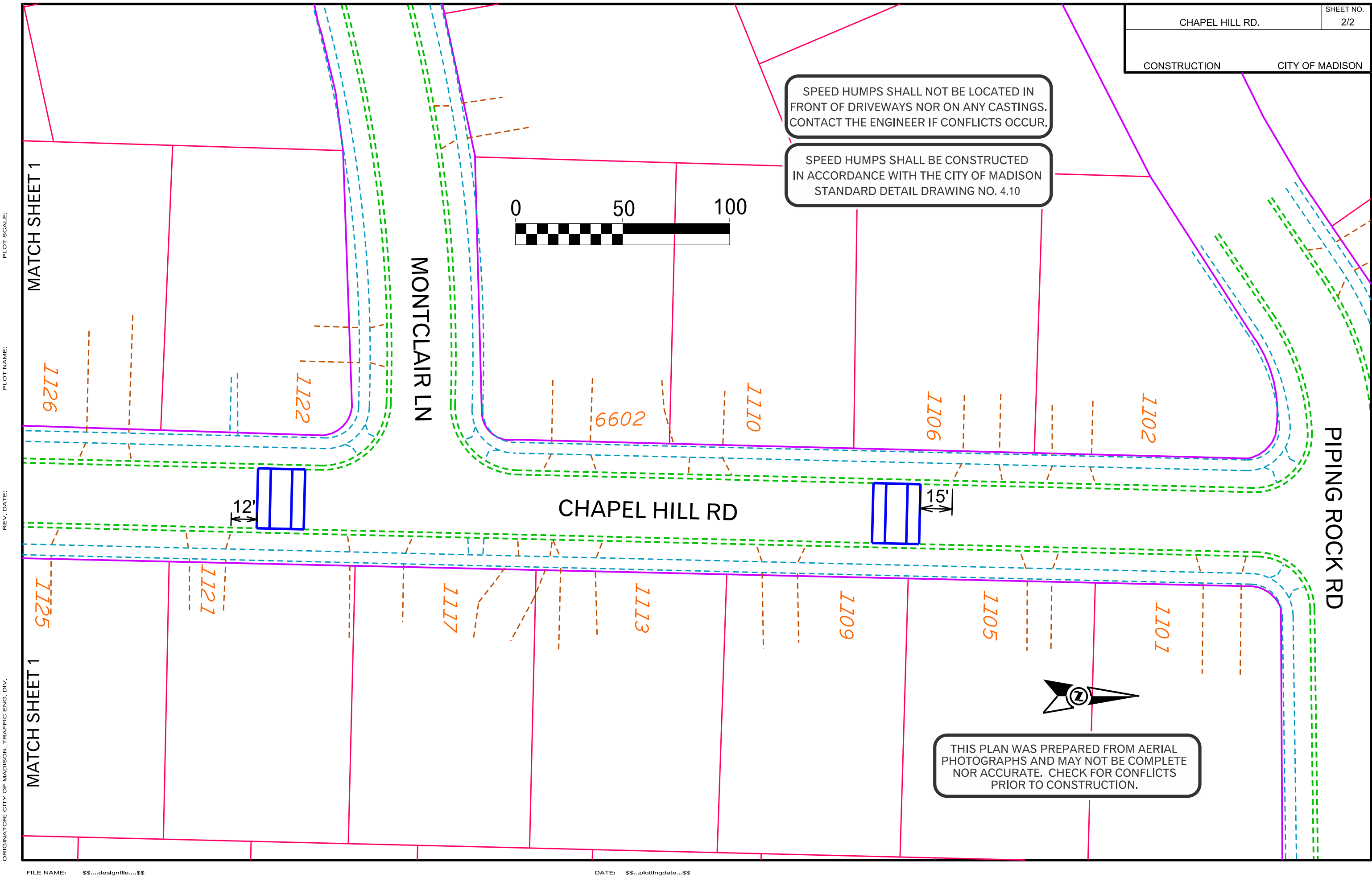
CHapel Hill Rd.	SHEET NO. 1/2
CONSTRUCTION	CITY OF MADISON

PLOT SCALE:

PLOT NAME:

REV. DATE:

ORIGINATOR: CITY OF MADISON, TRAFFIC ENG. DIV.



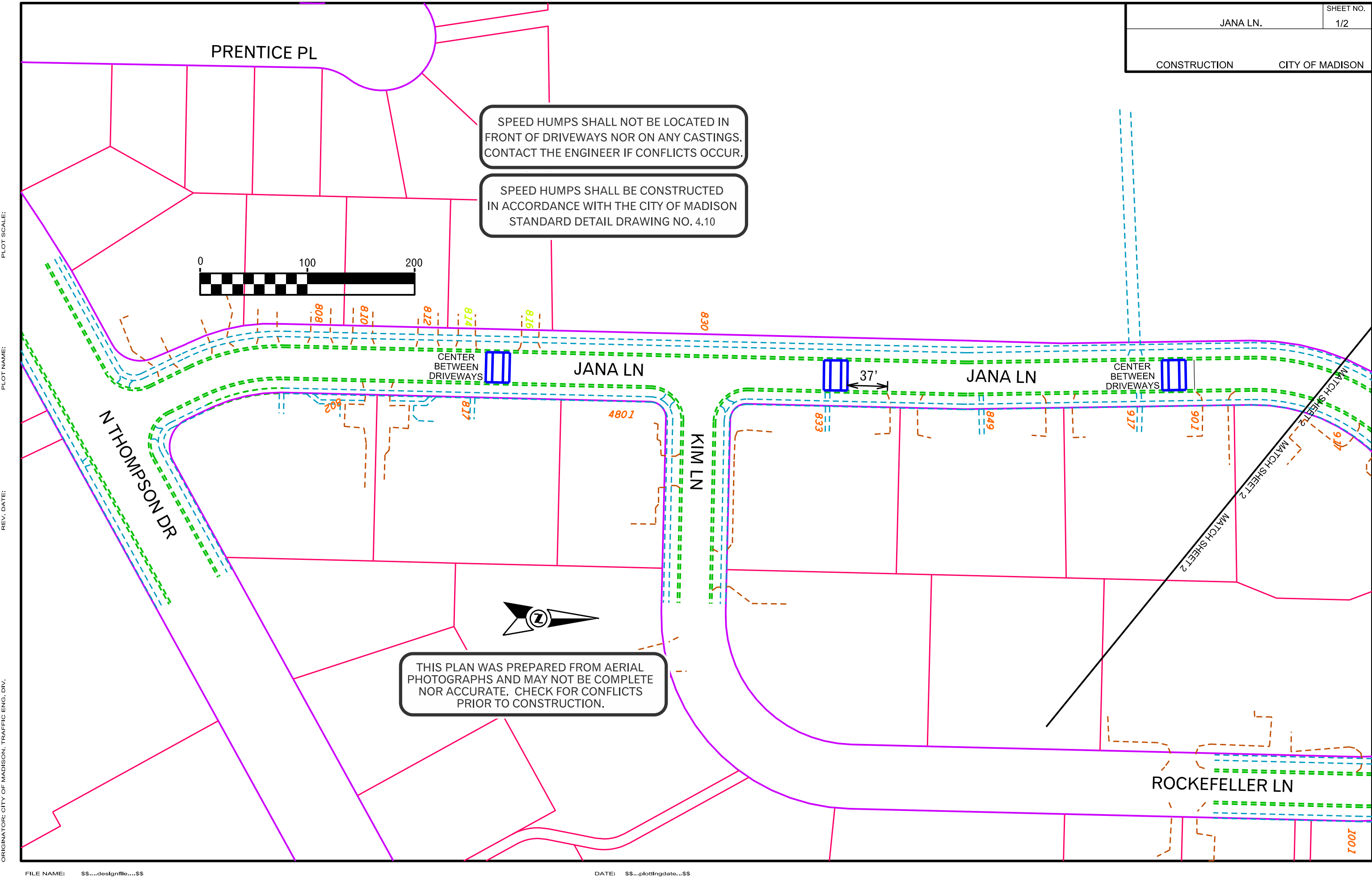
CHapel Hill Rd.	SHEET NO. 2/2
CONSTRUCTION	CITY OF MADISON

PLOT SCALE:

PLOT NAME:

REV. DATE:

ORIGINATOR: CITY OF MADISON, TRAFFIC ENG. DIV.



JANA LN.	SHEET NO. 1/2
CONSTRUCTION	CITY OF MADISON

SPEED HUMPS SHALL NOT BE LOCATED IN FRONT OF DRIVEWAYS NOR ON ANY CASTINGS. CONTACT THE ENGINEER IF CONFLICTS OCCUR.

SPEED HUMPS SHALL BE CONSTRUCTED IN ACCORDANCE WITH THE CITY OF MADISON STANDARD DETAIL DRAWING NO. 4.10

THIS PLAN WAS PREPARED FROM AERIAL PHOTOGRAPHS AND MAY NOT BE COMPLETE NOR ACCURATE. CHECK FOR CONFLICTS PRIOR TO CONSTRUCTION.

PLOT SCALE:

PLOT NAME:

REV. DATE:

ORIGINATOR: CITY OF MADISON, TRAFFIC ENG. DIV.

PLOT SCALE:

PLOT NAME:

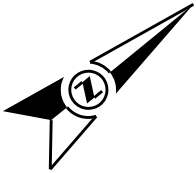
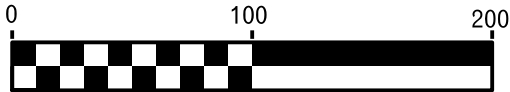
REV. DATE:

ORIGINATOR: CITY OF MADISON, TRAFFIC ENG. DIV.

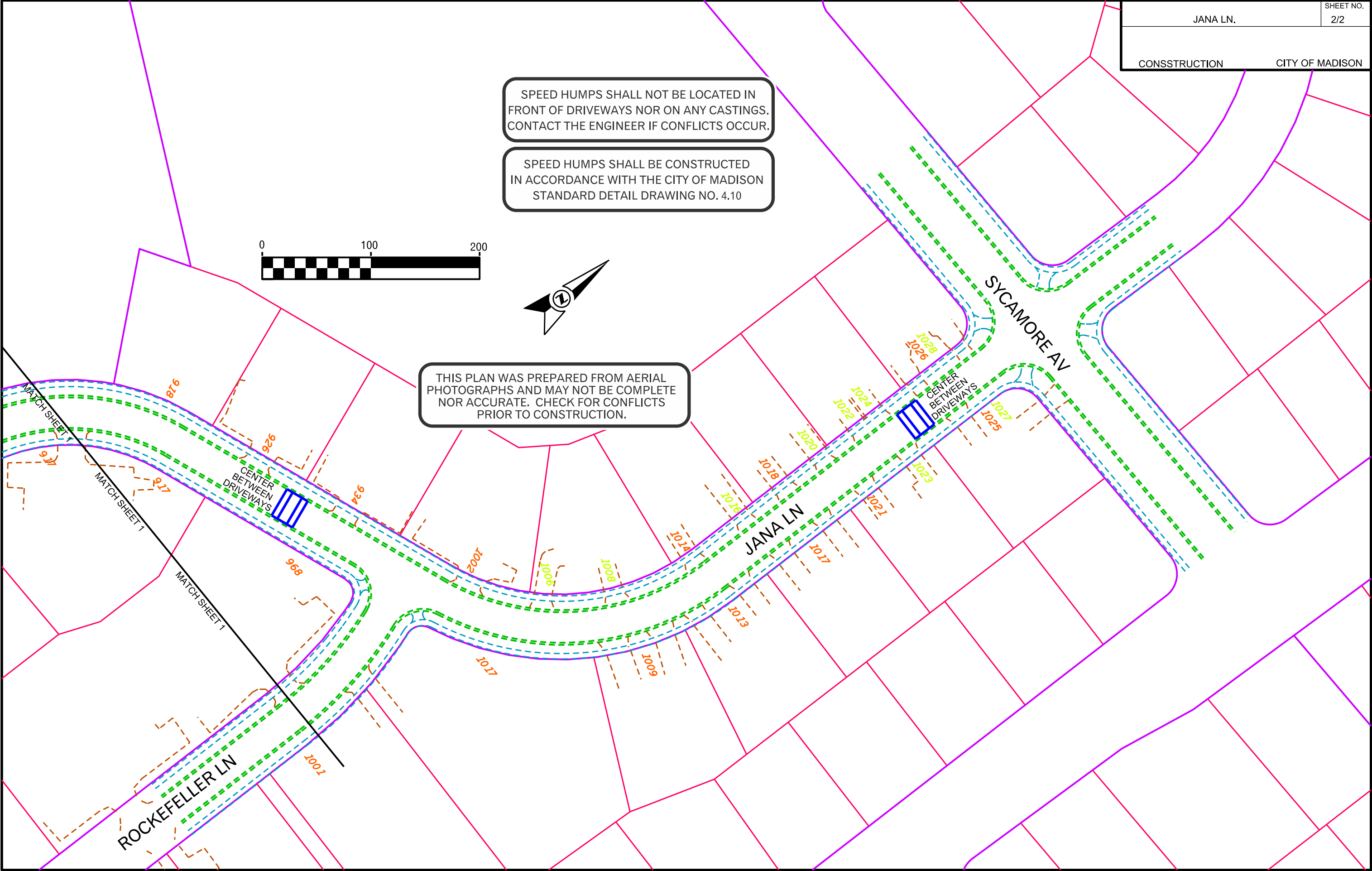
JANA LN.	SHEET NO. 2/2
CONSSTRUCTION	CITY OF MADISON

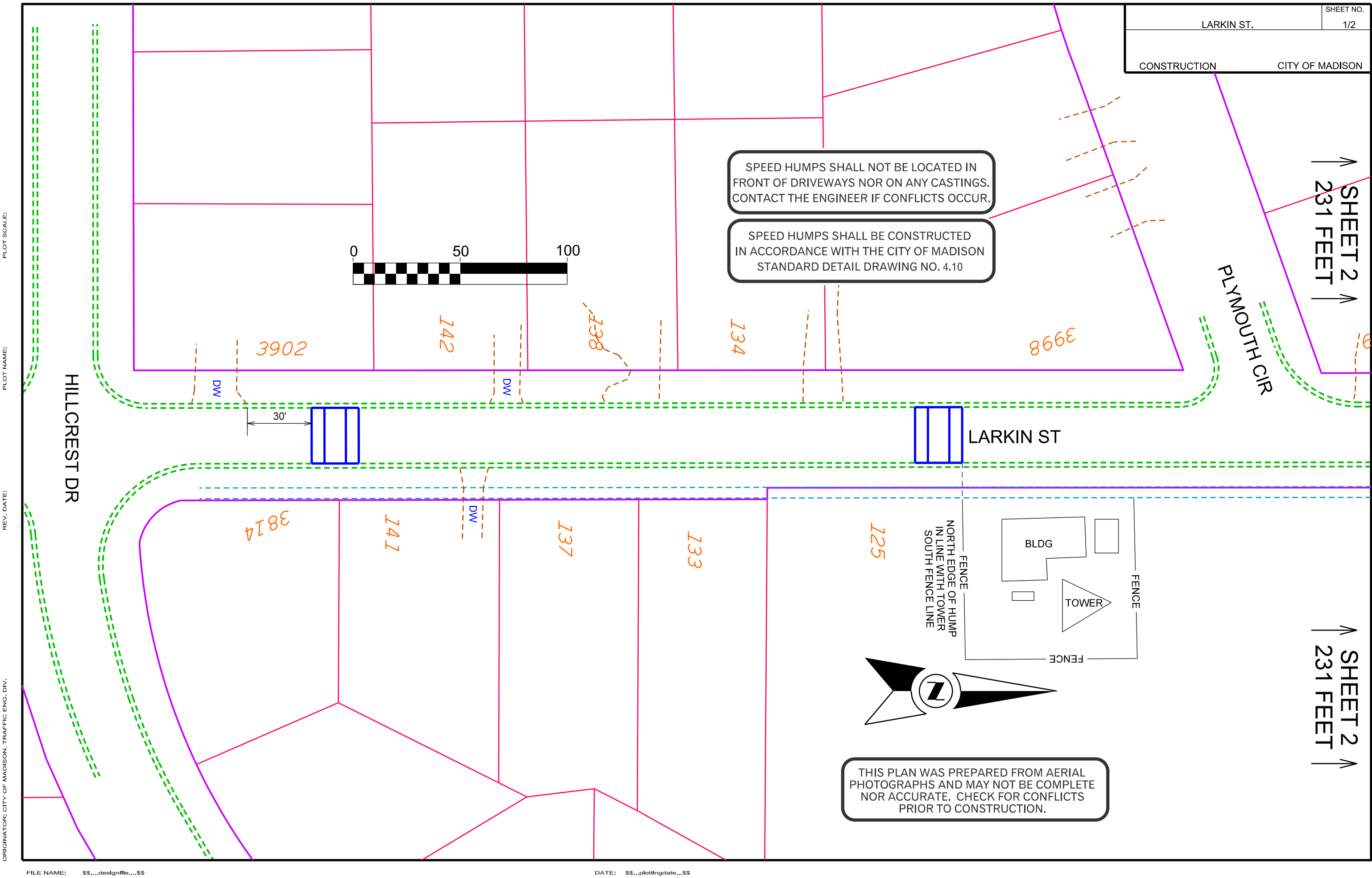
SPEED HUMPS SHALL NOT BE LOCATED IN FRONT OF DRIVEWAYS NOR ON ANY CASTINGS. CONTACT THE ENGINEER IF CONFLICTS OCCUR.

SPEED HUMPS SHALL BE CONSTRUCTED IN ACCORDANCE WITH THE CITY OF MADISON STANDARD DETAIL DRAWING NO. 4.10



THIS PLAN WAS PREPARED FROM AERIAL PHOTOGRAPHS AND MAY NOT BE COMPLETE NOR ACCURATE. CHECK FOR CONFLICTS PRIOR TO CONSTRUCTION.



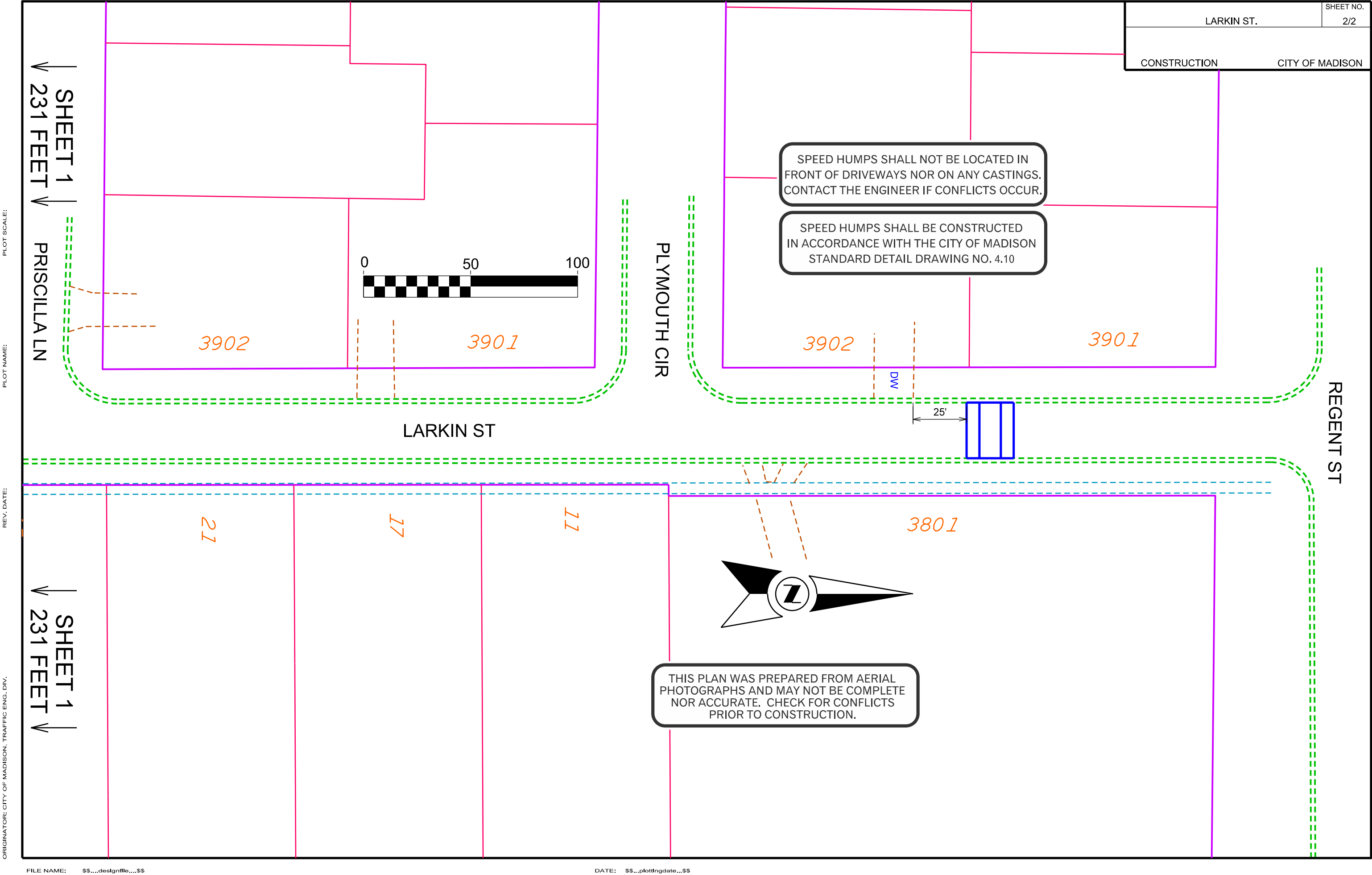


PLOT SCALE:

PLOT NAME:

REV. DATE:

ORIGINATOR: CITY OF MADISON, TRAFFIC ENG. DIV.

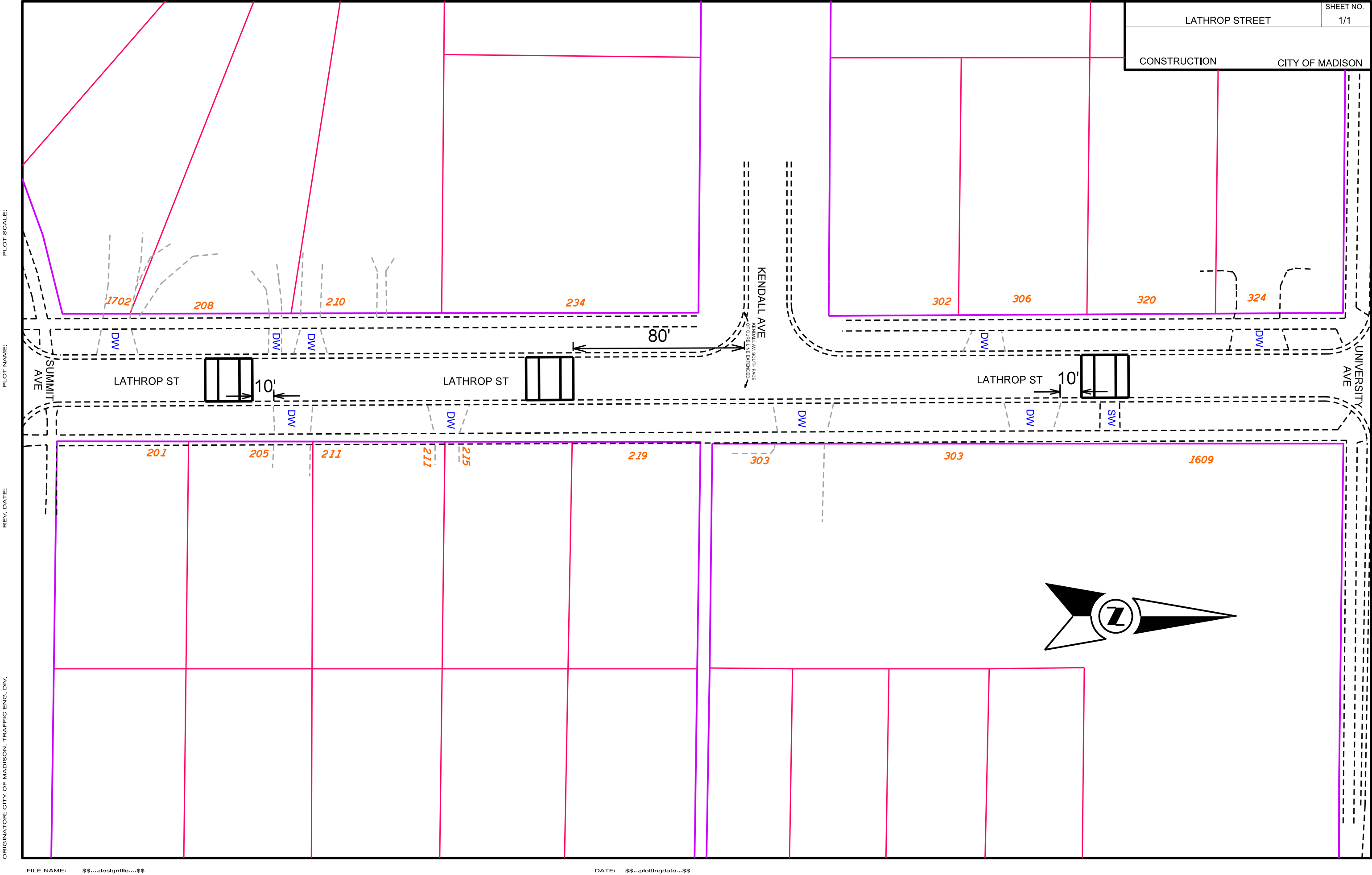


PLOT SCALE:

PLOT NAME:

REV. DATE:

ORIGINATOR: CITY OF MADISON, TRAFFIC ENG. DIV.



PLOT SCALE:

PLOT NAME:

REV. DATE:

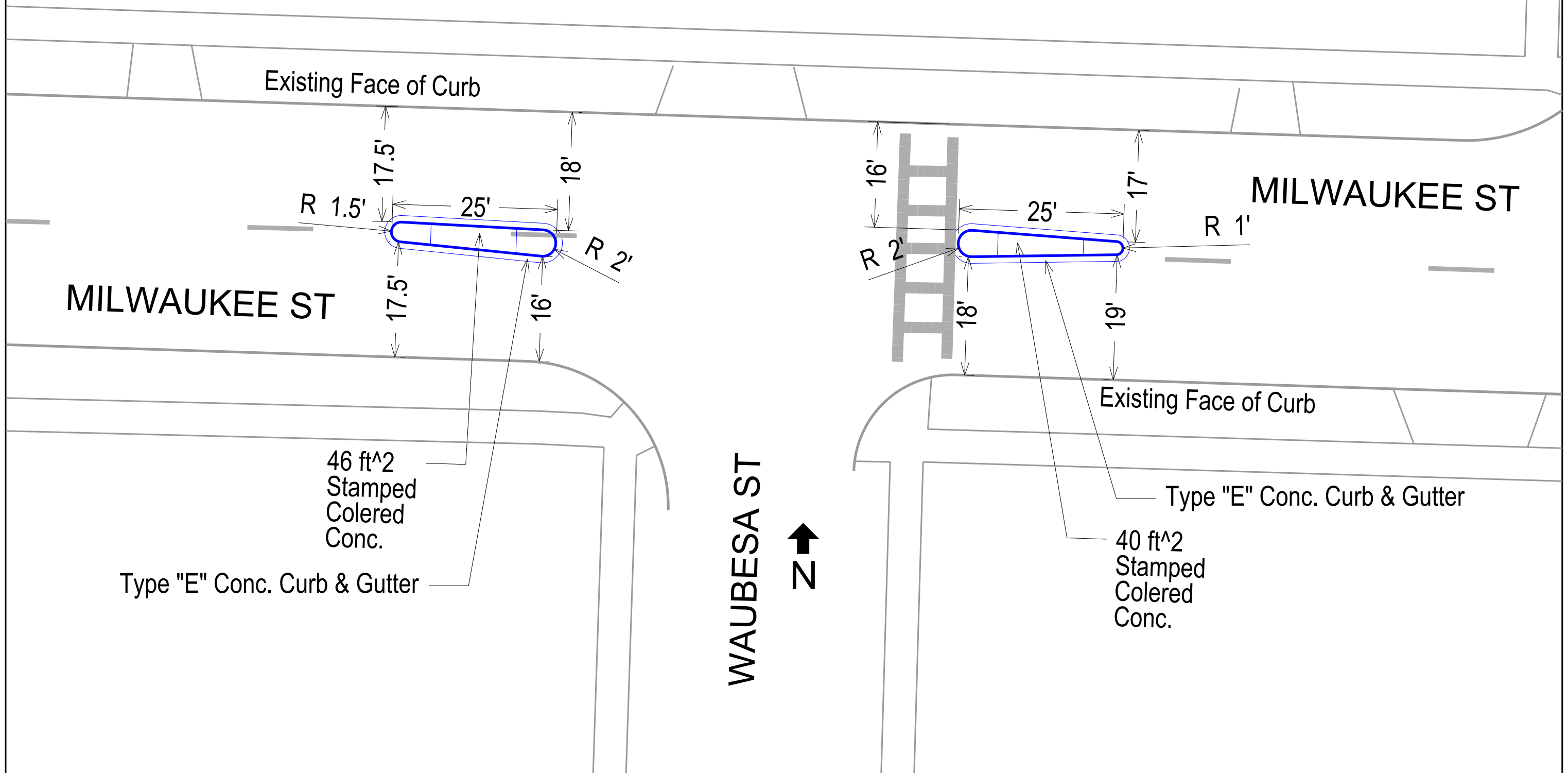
ORIGINATOR: CITY OF MADISON, TRAFFIC ENG. DIV.

PLOT SCALE:

PLOT NAME:

REV. DATE:

ORIGINATOR: CITY OF MADISON, TRAFFIC ENG. DIV.

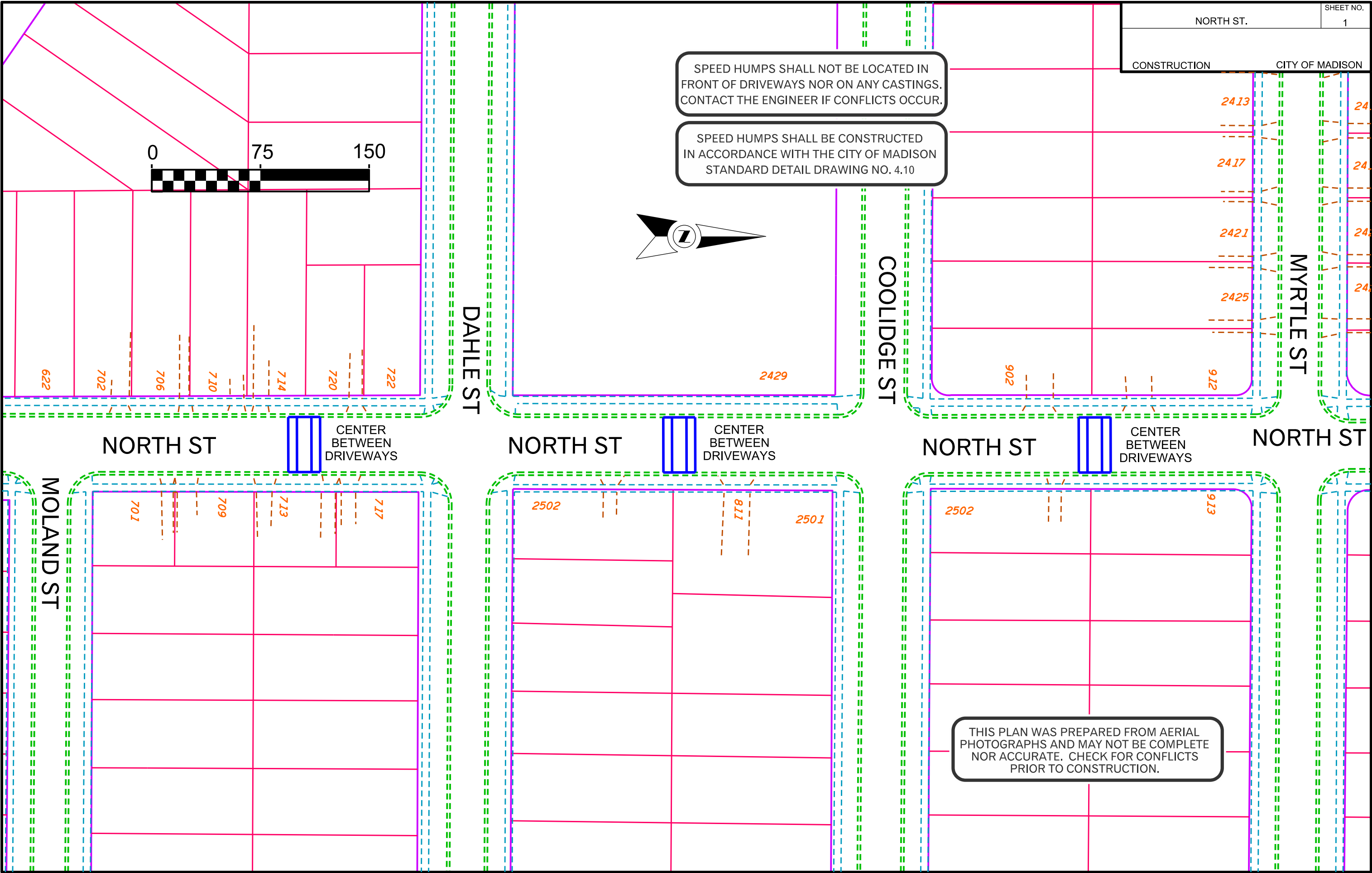


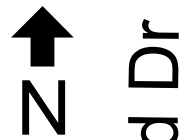
PLOT SCALE:

PLOT NAME:

REV. DATE:

ORIGINATOR: CITY OF MADISON, TRAFFIC ENG. DIV.





Todd Dr

R 1'

14'

16'

25'

13'

15'

R 2'

40 ft²
Stamped
Colored
Conc.

Type "E" Conc. Curb & Gutter

McDivitt Rd

Island noses to be Concrete Mountable Median Island Nose
(Cross Walk at End /approach Island Nose) per SSD 3.13

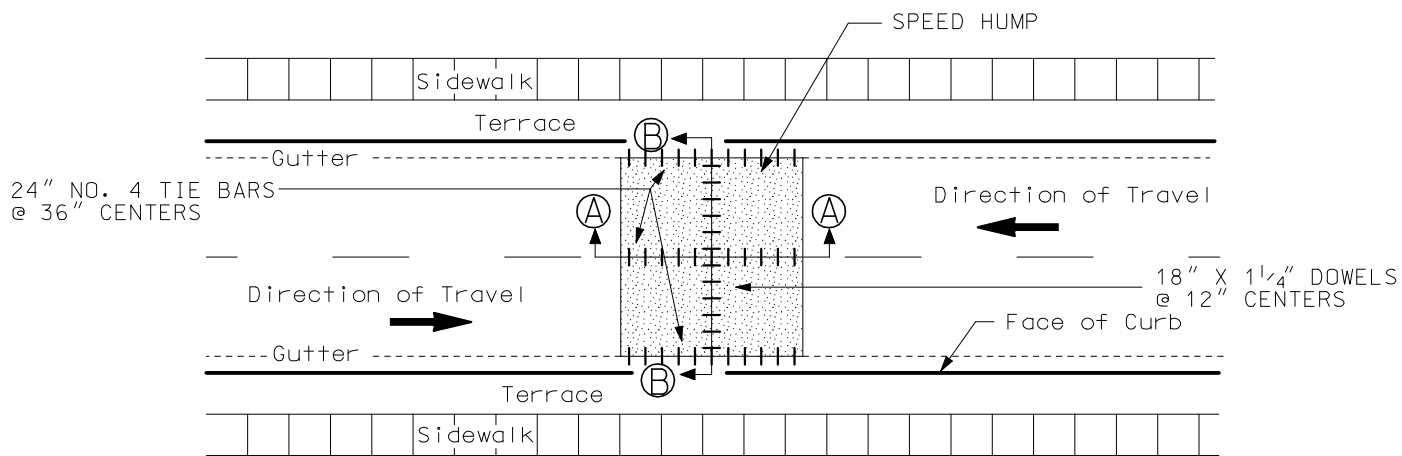
PLOT SCALE:

PLOT NAME:

REV. DATE:

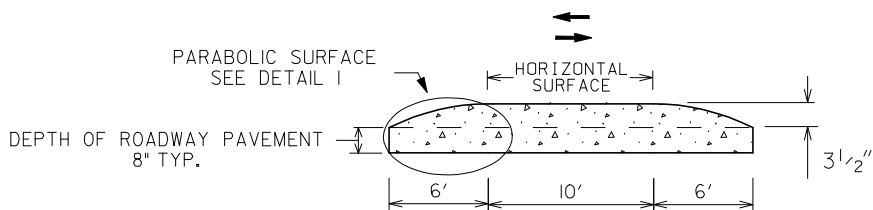
ORIGINATOR: CITY OF MADISON, TRAFFIC ENG. DIV.

SPEED HUMP DETAIL



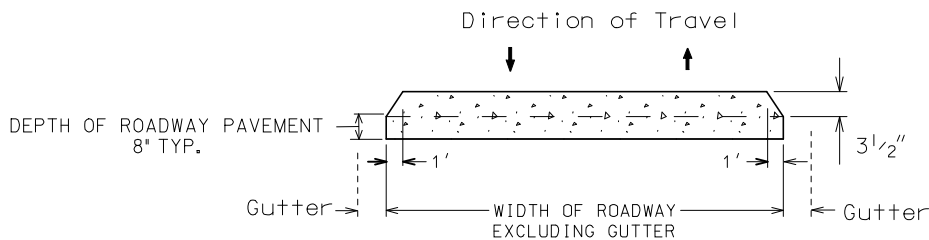
PLAN VIEW

SPEED HUMP ON TYPICAL URBAN STREET



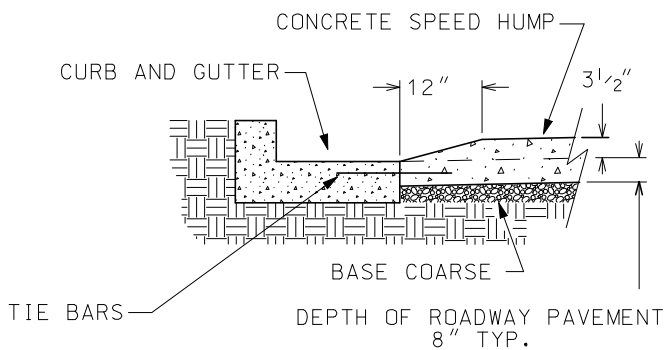
SECTION AA

NOT TO SCALE
(VERTICAL SCALE IS EXAGGERATED)



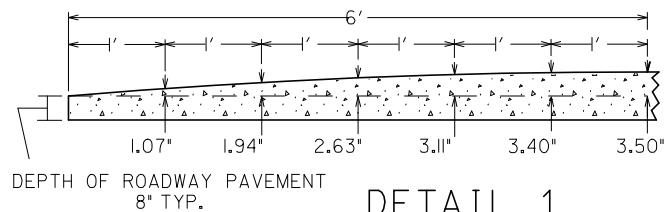
SECTION BB

NOT TO SCALE
(VERTICAL SCALE IS EXAGGERATED)



CURB DETAIL

CROSS SECTION



DETAIL 1

PARABOLIC SURFACE

2008

CITY OF MADISON
ENGINEERING DIVISION

CONCRETE SPEED HUMP
FLOW THROUGH GUTTER

STANDARD DETAIL DRAWING 4.10