

EXHIBIT II

LANDS TO BE ANNEXED TO THE CITY OF MADISON

Enactment No. _____

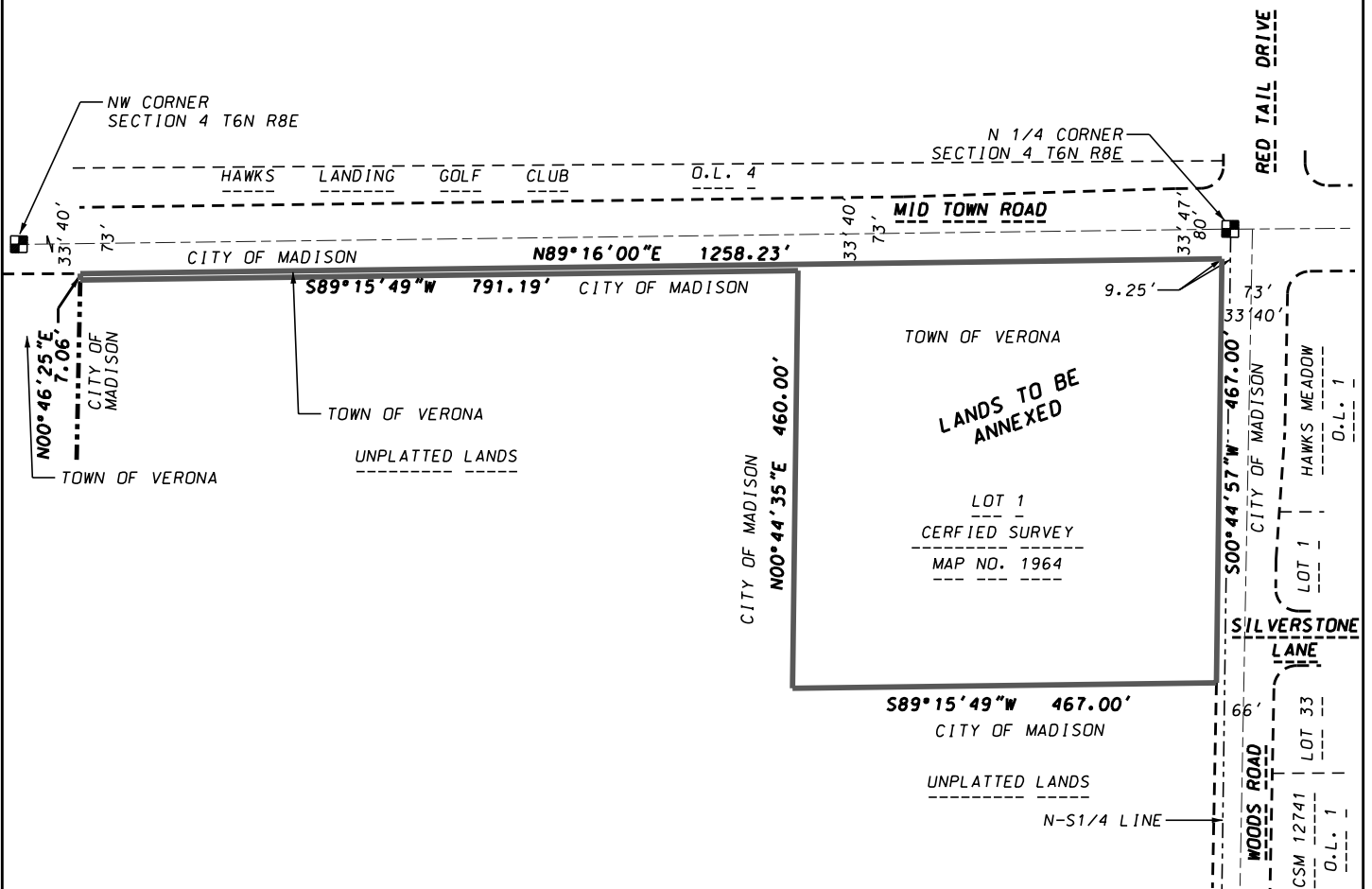
Ald. District Annexed to _____

File ID No. _____

Area 223,600 sf; 5.133 ac; 0.0080 sq. mi.

Date Adopted _____

Date Published _____



D'ONOFRIO KOTTKE AND ASSOCIATES, INC.

7530 Westward Way, Madison, WI 53717
Phone: 608.833.7530 • Fax: 608.833.1089

YOUR NATURAL RESOURCE FOR LAND DEVELOPMENT



Scale 1" = 200'

DATE: 12-05-13
F.N.: 13-07-115
REV.

DRAWN BY: KJP

U:/USER/1007116/DRAWINGS/ANNEXATION.DGN