



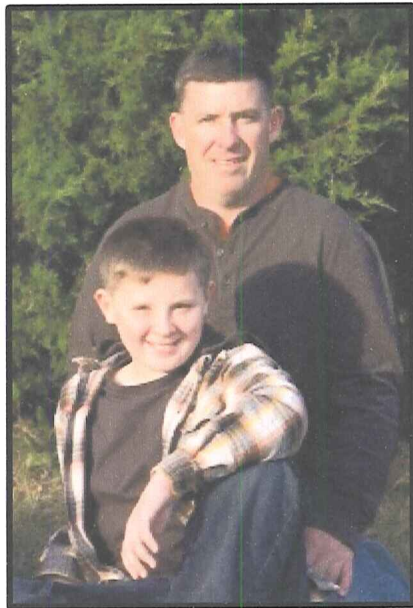
Mosaic Ridge Development

Who We Are:



Cindy Hammer, Owner-Operator

- Cindy has held a WI Real Estate Sales License since 2001
- Cindy started Bluestone (formerly Hammer Builders) in 2004
- Bluestone has built 18 homes under \$225K
- Most new homes have been entry level homes, three were FOCUS certified homes for low income buyers



Jim Roloff, Project Manager

- Jim and his wealth of knowledge, experience, and integrity was added to the Bluestone team in 2011
- For the past 18 years Jim has managed all aspects of the construction of many homes, including over 100 entry level homes in the Madison and surrounding area. Numerous have been FOCUS & GBH certified

Our Philosophy

■ Good Design and Quality vs. Quantity

We believe in building homes for the people who will live in them. That means creating homes that fit our customer's lifestyle. We do not focus on square footage, but rather well-designed space that functions efficiently and meets the everyday needs of our customer. Good design is more efficient, and generally requires less square footage. This leaves more budget dollars for upgrades to systems and finishes.

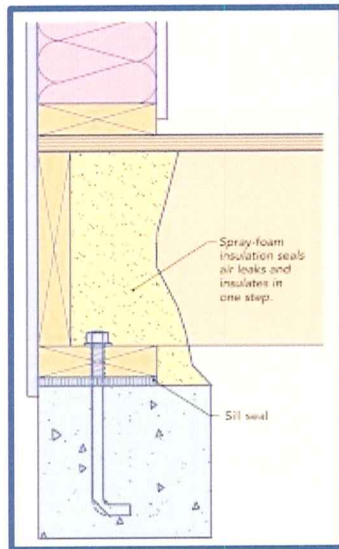
- Energy Efficiency & Quality Meets Budget



We know that well-built energy efficient homes can be built affordably. To us, affordability does not have to mean cheap. We strive to use the best methods and materials that each budget will afford and the improved techniques and innovations now available allow us to be more efficient in our practices.

■ Prioritize for Best Value

Budget is a concern for every client we work with, regardless of price-point. We work very hard to point our clients in the direction that gets them the most value for their dollar. We advocate for the things that many people do not notice initially, but that make the real difference in the end.



- ✓ Quality Windows and Doors
- ✓ Superior Air-Sealing and Insulation
- ✓ High Efficiency HVAC Equipment and Appliances
- ✓ Guaranteed Basement Damp-Proofing & Drain Tile System

What Bluestone Brings To Mosaic Ridge

- Collectively, we have built over 100 quality entry level homes with numerous being FOCUS and GBH certified
- FOCUS certifiable methods and materials are standard practice at Bluestone
- We have successfully built homes that are well built, energy efficient, and attractive at very low price points

Thank You

We would like to thank Matt Wachter and the Selection Committee for this opportunity, and look forward to working on this rewarding project.