

**APPLICATION FOR  
URBAN DESIGN COMMISSION  
REVIEW AND APPROVAL**

**AGENDA ITEM # \_\_\_\_\_  
Project # \_\_\_\_\_  
Legistar # \_\_\_\_\_**

DATE SUBMITTED: _____	<b>Action Requested</b>
UDC MEETING DATE: _____	<input type="checkbox"/> Informational Presentation
	<input type="checkbox"/> Initial Approval and/or Recommendation
	<input type="checkbox"/> Final Approval and/or Recommendation

**PLEASE PRINT!**

**PLEASE PRINT!**

PROJECT ADDRESS: 4824 High Crossing Blvd/ 2501 East Springs Drive

ALDERMANIC DISTRICT: 17

OWNER/DEVELOPER (Partners and/or Principals)  
Don Goben, DMG Holding Company LLC  
1415 Pflaum Rd  
Madison, WI 53716

ARCHITECT/DESIGNER/OR AGENT:  
Arlan Kay, AIA, Architecture Network Inc  
116 E Dayton St  
Madison, WI 53703

CONTACT PERSON: Amy Hasselman, AIA, Architecture Network Inc  
Address: 116 E Dayton St  
Madison, WI 53703  
Phone: (608) 251-7515 x33  
Fax: (608) 251-7566  
E-mail address: amy\_hasselmann@architecture-network.net

**TYPE OF PROJECT:**  
(See Section A for:)

- Planned Unit Development (PUD)
  - General Development Plan (GDP)
  - Specific Implementation Plan (SIP)
- Planned Community Development (PCD)
  - General Development Plan (GDP)
  - Specific Implementation Plan (SIP)
- Planned Residential Development (PRD)
- New Construction or Exterior Remodeling in an Urban Design District \* (A public hearing is required as well as a fee)
- School, Public Building or Space (Fee may be required)
- New Construction or Addition to or Remodeling of a Retail, Hotel or Motel Building Exceeding 40,000 Sq. Ft.
- Planned Commercial Site

(See Section B for:)

- New Construction or Exterior Remodeling in C4 District (Fee required)

(See Section C for:)

- R.P.S.M. Parking Variance (Fee required)

(See Section D for:)

- Comprehensive Design Review\* (Fee required)
- Street Graphics Variance\* (Fee required)
- Other \_\_\_\_\_

\*Public Hearing Required (Submission Deadline 3 Weeks in Advance of Meeting Date)

Where fees are required (as noted above) they apply with the first submittal for either initial or final approval of a project.

# GOBEN CARS

East Springs Drive  
Madison, Wisconsin

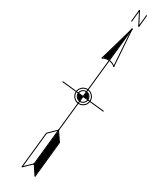
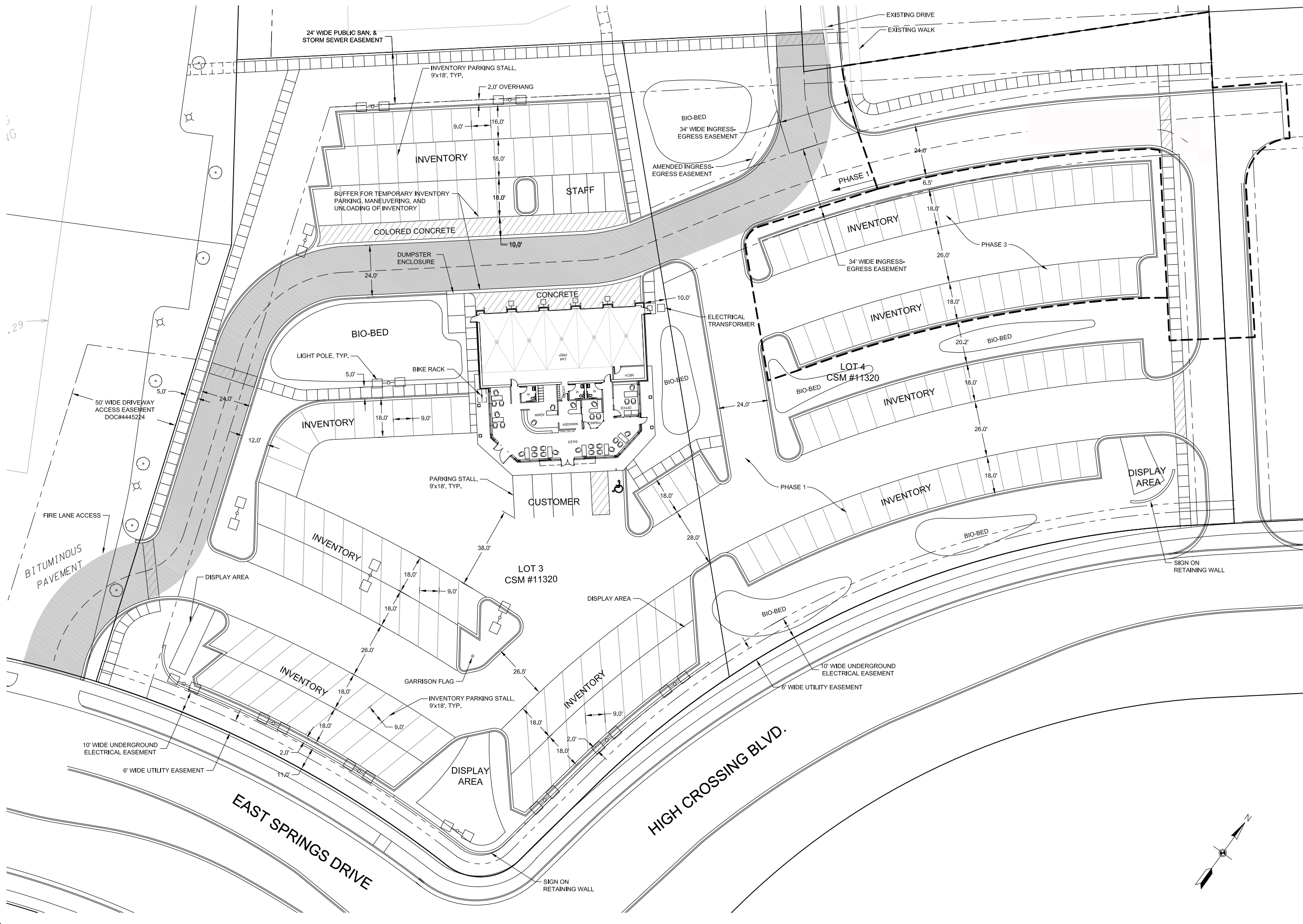
REVISIONS:	

DATE: 09-18-13  
SCALE: 1"=20'  
PROJECT: K1214  
DRAWN BY: JMS  
DRAWING NAME:

EXPANDED SITE PLAN

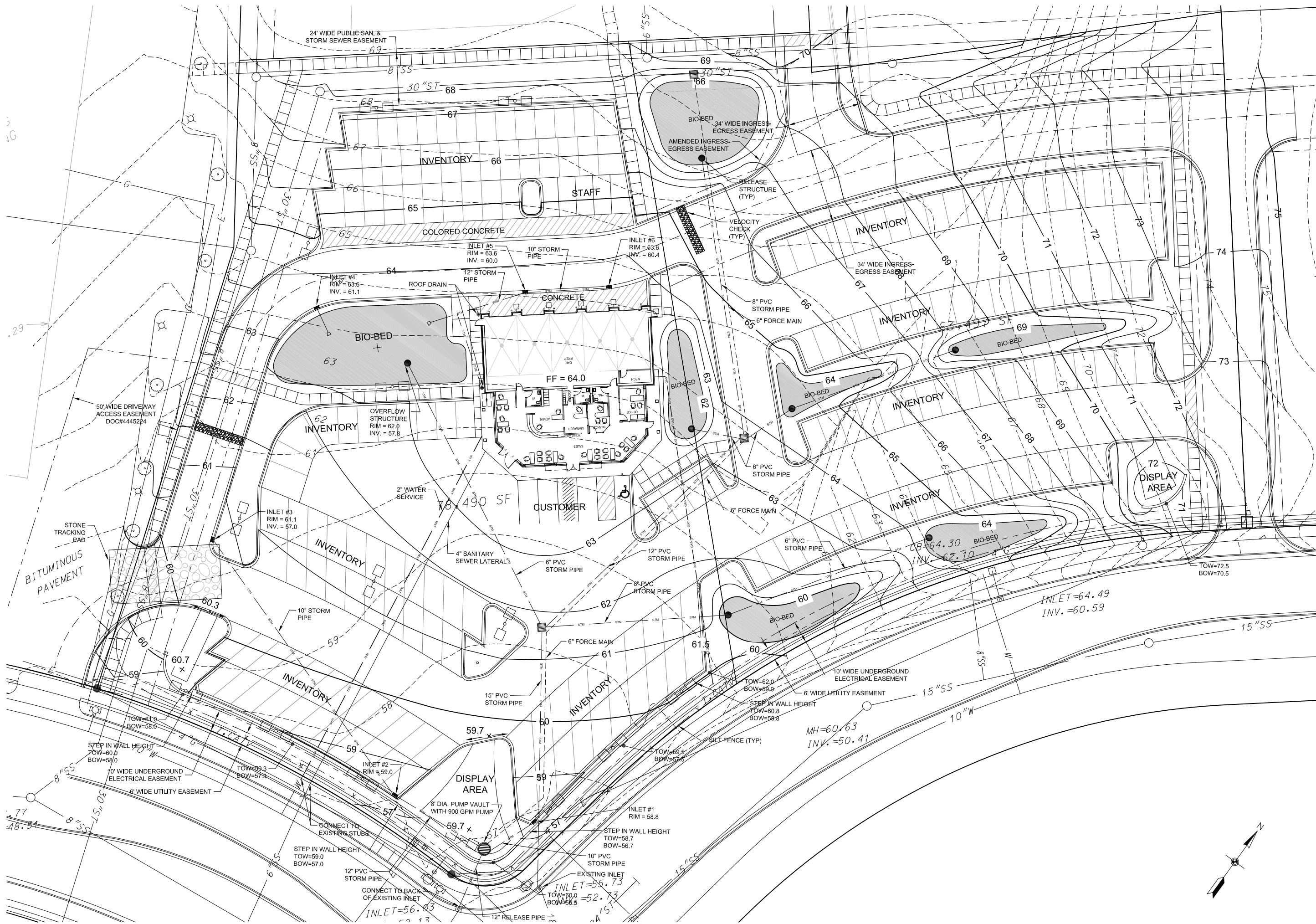
DRAWING NUMBER:

## C-1.0



# GOBEN CARS

East Springs Drive  
Madison, Wisconsin



REVISIONS:

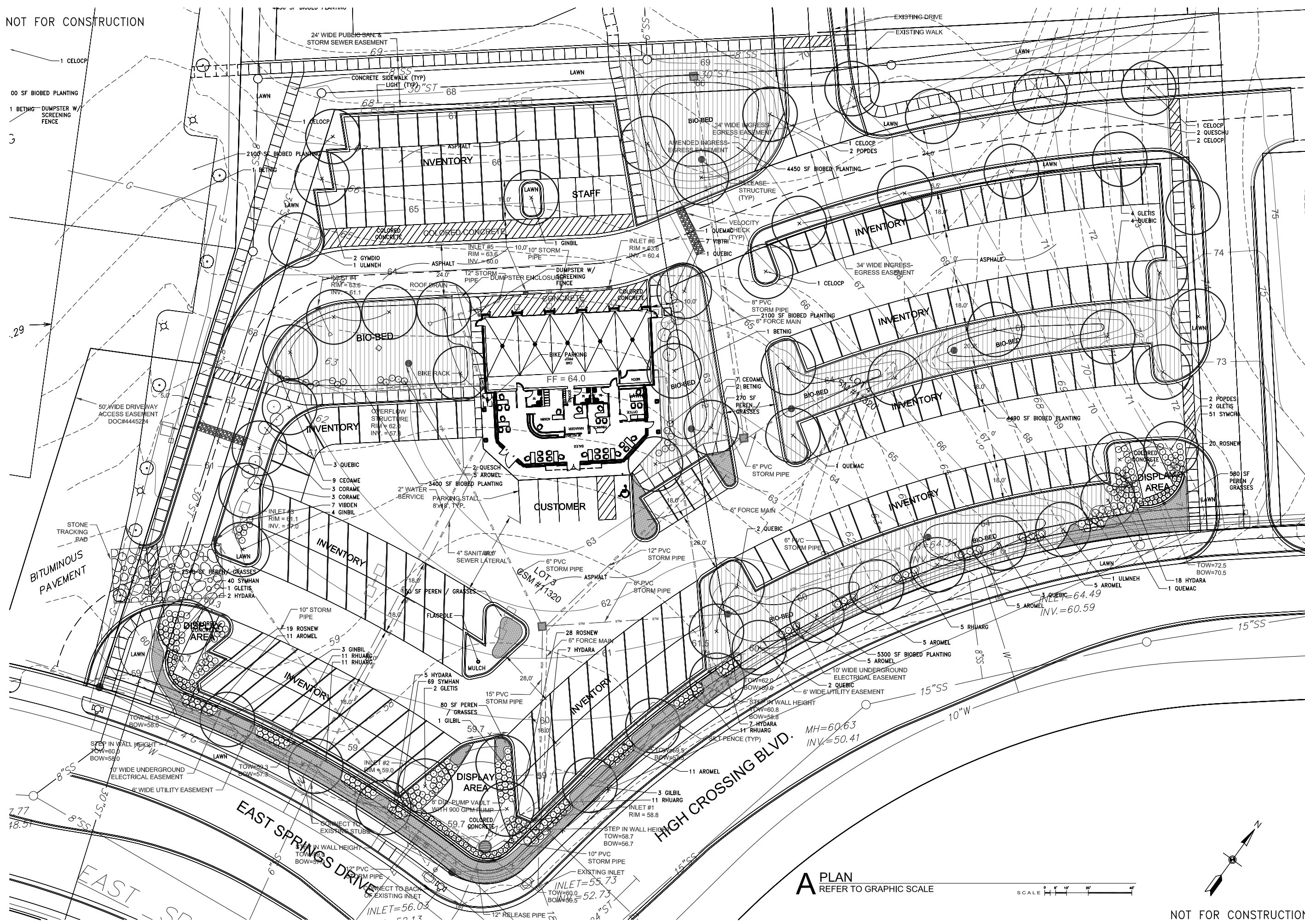

DATE: 09-18-13  
SCALE: 1"=20'  
PROJECT: K1214  
DRAWN BY: JMS  
DRAWING NAME:

EXPANDED GRADING AND UTILITY PLAN

DRAWING NUMBER:

# C-1.1

NOT FOR CONSTRUCTION



116 East Dayton Street  
Madison, WI 53703  
608-251-7515 Phone  
608-251-7566 Fax  
www.architecture-network.net



# Gobben Cars

East Springs Drive  
Madison, Wisconsin

REVISIONS:

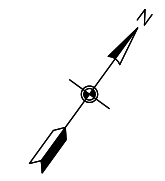
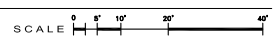

DATE: 9/18/2013  
SCALE: 1  
PROJECT: 1"=20'-00"  
DRAWN BY: AP / HN  
DRAWING NAME:

LANDSCAPE PLAN  
DRAWING NUMBER:

# L-1.0

© COPYRIGHT BY: ARCHITECTURE NETWORK, INC.

**A PLAN**  
REFER TO GRAPHIC SCALE



NOT FOR CONSTRUCTION



Quantity	Key	Scientific Name	Common Name	Size	Root	Spacing
<b>58</b>	<b>TREES</b>					
3	BETNIG	<i>Betula nigra</i>	River Birch	8' clump	B&B	Plan
6	CELOCP	<i>Celtis occidentalis</i> 'Prairie Pride'	Prairie Pride Hackberry	2.5" cal.	B&B	Plan
9	GLETIS	<i>Gleditsia triacanthos</i> var. <i>inermis</i> 'Skyline'	Thornless Common Honeylocust	2.5" cal.	B&B	Plan
13	GINBIL	<i>Ginkgo biloba</i>	Ginkgo biloba	2.5" cal.	B&B	Plan
2	GYMDIO	<i>Gymnocladus dioica</i> 'Expresso'	Expresso Kentucky Coffeetree	2.5" cal.	B&B	Plan
4	POPDES	<i>Populus deltoides</i> 'Siouxland'	Siouxland Poplar	2.5" cal.	B&B	Plan
12	QUEBIC	<i>Quercus bicolor</i>	Swamp White Oak	2.5" cal.	B&B	Plan
3	QUEMAC	<i>Quercus macrocarpa</i>	Bur Oak	2.5" cal.	B&B	Plan
7	QUESCH	<i>Quercus X schuettii</i>	Schuettii Oak	2.5" cal.	B&B	Plan
2	ULMNFH	<i>Ulmus x 'New Horizon'</i>	Accolade Smoothleaf Elm	2.5" cal.	B&B	Plan
<b>13</b>	<b>SMALL TREES</b>					
	AMEGRA	<i>Amelanchier x grandiflora</i>	Apple Serviceberry	4' ht.	B&B	Plan
	CRACIN	<i>Crataegus crus-galli</i> var. <i>inermis</i>	Thornless Cocksbur Hawthorn	4' ht.	B&B	Plan
6	CORAME	<i>Corylus americana</i>	American Hazelnut	5 gal.	Cont.	Plan
	VIBPRJ	<i>Viburnum prunifolium</i>	Blackhaw Viburnum	4' ht.	B&B	Plan
7	VIBTRI	<i>Viburnum trilobum</i>	Highbush Cranberry	4' ht.	B&B	Plan
<b>385</b>	<b>SHRUBS</b>					
47	AROMEL	<i>Azania melanocarpa</i>	Black Chokeberry	5 gal.	Cont.	Plan
16	CEOAME	<i>Ceanothus americanus</i>	New Jersey Tea	5 gal.	Cont.	Plan
39	HYDARA	<i>Hydrangea arborescens</i> 'Annabelle'	Annabelle Hydrangea	7 gal.	Cont.	Plan
	PHYOPU	<i>Physocarpus opulifolius</i>	Common Ninebark	5 gal.	Cont.	Plan
49	RHLUARG	<i>Rhus aromatica</i> 'Gro-low'	Grow-low Sumac	5 gal.	Cont.	Plan
67	ROSNNEW	<i>Rosa</i>	Low Rose	5 gal.	Cont.	Plan
	SYRMPA	<i>Syringa meyeri</i> 'Palibin'	Palibin Lilac	5 gal.	Cont.	Plan
160	SYMCHA	<i>Symphoricarpos x chenaultii</i> 'Hancock'	Hancock Coralberry	2 gal.	Cont.	Plan
7	VIBDEN	<i>Viburnum dentatum</i>	Arrowwood Viburnum	5 gal.	Cont.	Plan
<b>1360</b>	<b>PERENNIALS</b>					
62	ALLCER	<i>Allium cernuum</i>	Nodding Onion	gal.	Cont.	18"
140	ANECAN	<i>Anemone canadensis</i>	Meadow Anemone	gal.	Cont.	18"
50	ASCTUB	<i>Asclepias tuberosa</i>	Butterflyweed	gal.	Cont.	18"
50	ASTAZU	<i>Aster azureus</i>	Sky Blue Aster	gal.	Cont.	18"
50	CORPAL	<i>Careopsis palmata</i>	Prairie Coreopsis	gal.	Cont.	18"
80	ECHPUR	<i>Echinacea purpurea</i>	Purple Coneflower	gal.	Cont.	18"
30	EUPMGA	<i>Eupatorium maculatum</i> 'Gateway'	Spotted Joe Pye Weed	gal.	Cont.	18"
100	HEURIC	<i>Heuchera richardsonii</i>	Prairie Alum Root	gal.	Cont.	18"
80	LIAPYC	<i>Liatris pycnostachya</i>	Blazing Star	gal.	Cont.	18"
28	MISSGR	<i>Miscanthus sinensis</i> 'Gracillimus'	Maiden Grass	gal.	Cont.	18"
50	PANVRO	<i>Panicum virgatum</i> 'Rotstahbusch'	Red Switch Grass	gal.	Cont.	18"
50	PARINT	<i>Parthenium integrifolium</i>	Wild Quinine	gal.	Cont.	18"
50	PENDHR	<i>Penstemon digitalis</i> 'Husker Red'	Foxglove Beard Tongue	gal.	Cont.	18"
40	PETPUR	<i>Petalostemum purpureum</i>	Purple Prairie Clover	gal.	Cont.	18"
50	PHYVIR	<i>Physostegia virginiana</i>	Obedient Plant	gal.	Cont.	18"
50	RATPIN	<i>Ratibida pinnata</i>	Yellow Coneflower	gal.	Cont.	18"
100	RUDFGO	<i>Rudbeckia fulgida</i> 'Goldsturm'	Goldsturm Black-eyed Susan	gal.	Cont.	18"
80	SCHSCO	<i>Schizachyrium scaparium</i>	Little Bluestem	gal.	Cont.	18"
120	SEDHER	<i>Sedum 'Herbstfreude'</i>	Autumn Joy Sedum	gal.	Cont.	18"
100	SPOHET	<i>Sporobolus heterolepis</i>	Prairie Dropseed	gal.	Cont.	18"

**NOTES:**

- REFER TO SPECIFICATIONS
- SEED ALL LAWN AREAS
- PLANTING BED MAY HAVE MULCH OR LAWN AREA 18"-2' WIDE TO BUFFER ALONG VEHICLE USE AREAS
- MULCH ALL TREES, SHRUBS, AND PLANTING BEDS PER SPECIFICATIONS

A PLANT SCHEDULE

Gobben CARS

East Springs Drive  
Madison, Wisconsin

Quantity	Key	Scientific Name	Common Name	Size	Root	Spacing	Wetland Indicator
<b>2,800</b>	<b>BIOBED PLANTING MIX (4190 SF)</b>						
196		<i>Allium cernuum</i>	Nodding Wild Onion	gal.	Cont.	15"	FAC+
140		<i>Aster ericoides</i>	Heath Aster	gal.	Cont.	15"	FACW+
224		<i>Carex vulpinoidea</i>	Fox Sedge	gal.	Cont.	15"	OBL
56		<i>Eyringium yuccifolium</i>	Rattlesnake Master	gal.	Cont.	15"	FAC+
140		<i>Helenium autumnale</i>	Autumn Sneezeweed	gal.	Cont.	15"	FACW+
140		<i>Lobelia siphilitica</i>	Great Blue Lobelia	gal.	Cont.	15"	FACW+
140		<i>Monarda fistulosa</i>	Wild Bergamot	gal.	Cont.	15"	FACU
140		<i>Panicum virgatum</i>	Switchgrass	gal.	Cont.	15"	FAC+
56		<i>Penstemon digitalis</i>	Foxglove	gal.	Cont.	15"	FAC-
252		<i>Schizachyrium scaparium</i>	Little Bluestem	gal.	Cont.	15"	FACU-
84		<i>Silphium perfoliatum</i>	Cup Plant	gal.	Cont.	15"	FACW-
56		<i>Silphium terebinthinaceum</i>	Prairie Dock	gal.	Cont.	15"	FACU
140		<i>Solidago rigida</i>	Stiff Goldenrod	gal.	Cont.	15"	FACU-
252		<i>Sorghastrum nutans</i>	Indian Grass	gal.	Cont.	15"	FACU+
252		<i>Spartina pectinata</i>	Prairie Cordgrass	gal.	Cont.	15"	FACW+
140		<i>Sporobolus heterolepis</i>	Prairie Dropseed	gal.	Cont.	15"	FACU-
112		<i>Veronica fasciculata</i>	Ironweed	gal.	Cont.	15"	FACW
140		<i>Veronicastrum virginicum</i>	Culver's Root	gal.	Cont.	15"	FAC
140		<i>Zizia aurea</i>	Golden Alexanders	gal.	Cont.	15"	FAC+

**NOTES:**

- REFER TO SPECIFICATIONS
- PLANTINGS MAY HAVE MULCH OR LAWN AREA 18"-2' WIDE TO BUFFER ALONG VEHICLE USE AREAS
- PLANT SPECIES AND SIZE SUBSTITUTIONS MAY BE MADE PRIOR TO CONSTRUCTION DUE TO PENDING SOIL TESTING RESULTS AND FINAL ENGINEERING

B PLANT SCHEDULE: BIOBED

LANDSCAPE CALCULATIONS PER ZONING CODE (28.142:4c)				
PLANT TYPE	POINTS	MINIMUM SIZE AT INSTALLATION	QTY PROVIDED	POINTS RECEIVED
OVERSTORY DECIDUOUS TREE	35	2 1/2" CAL	58	2030
ORNAMENTAL TREE	15	1 1/2" CAL	13	195
EVERGREEN TREE	15	3FT TALL	0	0
SHRUB, DECIDUOUS	2	18" OR 3G	385	770
SHRUB, EVERGREEN	3	18" OR 3G		0
ORNAMENTAL GRASSES		2 18" OR 3G	(1 GAL SIZE PROVIDED)	NA
ORNAMENTAL/DECORATIVE FENCING OR WALL	4 PER 10 IN. FT.	N/A		
<b>TOTAL POINTS PROVIDED</b>				<b>2995</b>
<b>TOTAL SITE AREA (SF)</b>	<b>143,760</b>			
<b>POINTS REQUIRED</b>	<b>2396</b>			

C LANDSCAPE CALCULATIONS

REVISIONS:	

DATE: 9/18/2013  
SCALE: 1  
PROJECT: 1"=20'-00"  
DRAWN BY: AP / HN  
DRAWING NAME:

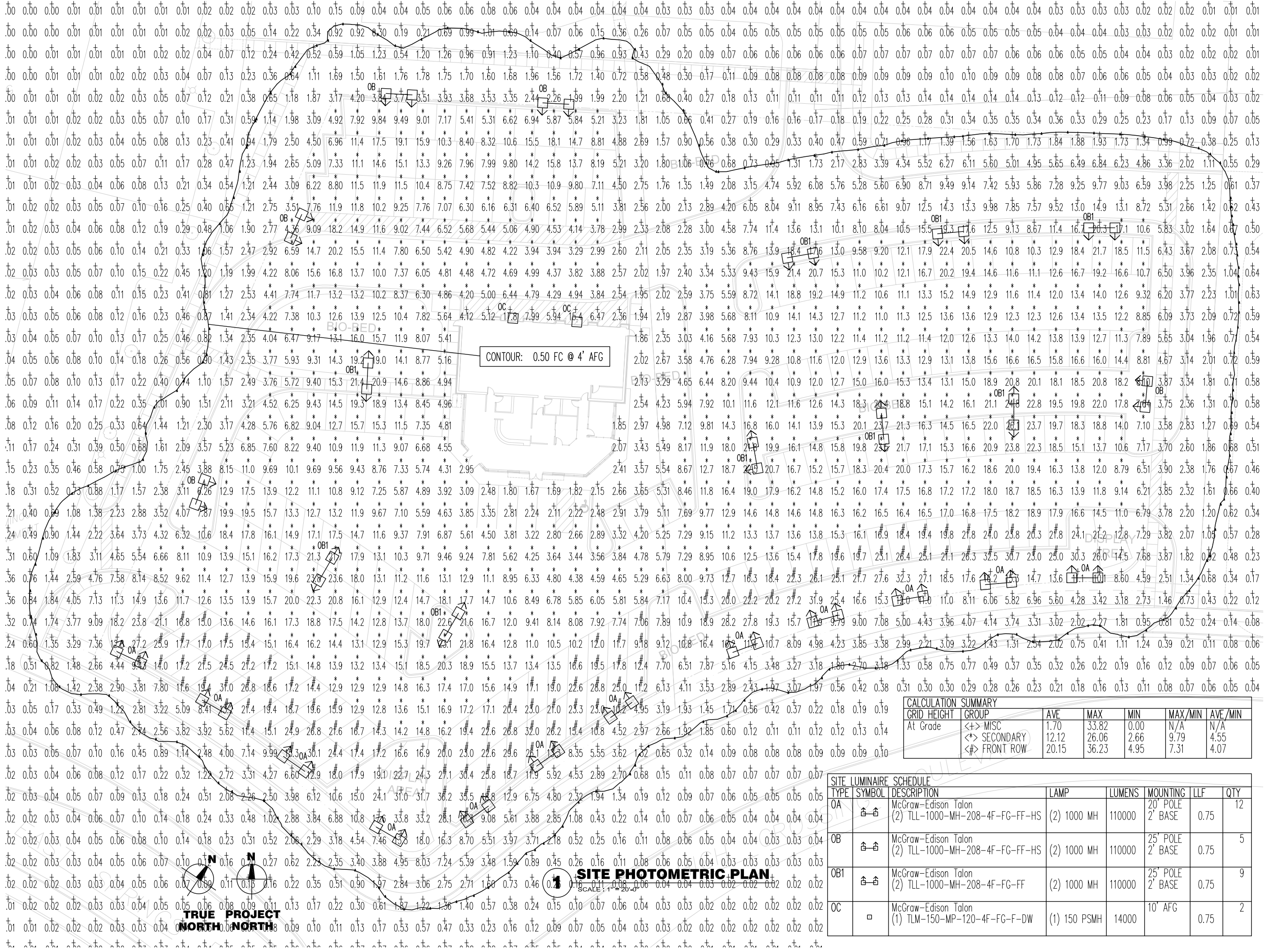
LANDSCAPE PLAN SCHEDULES

DRAWING NUMBER:

NOTE: THESE DRAWINGS ARE NOT FOR CONSTRUCTION. CONSTRUCTION DOCUMENTS WILL BE BASED ON SOILS TESTS AND FINAL ENGINEERING.

# GOBEN CARS

East Springs Drive  
Madison, Wisconsin



CONTOUR: 0.50 FC @ 4' AFG

CALCULATION SUMMARY						
GRID HEIGHT	GROUP	AVE	MAX	MIN	MAX/MIN	AVE/MIN
At Grade	<+> MISC	1.70	33.82	0.00	N/A	N/A
	<+> SECONDARY	12.12	26.06	2.66	9.79	4.55
	<#> FRONT ROW	20.15	36.23	4.95	7.31	4.07

SITE LUMINAIRE SCHEDULE							
TYPE	SYMBOL	DESCRIPTION	LAMP	LUMENS	MOUNTING	LLF	QTY
OA	☐	McGraw-Edison Talon (2) TLL-1000-MH-208-4F-FG-FF-HS	(2) 1000 MH	110000	20' POLE 2' BASE	0.75	12
OB	☐	McGraw-Edison Talon (2) TLL-1000-MH-208-4F-FG-FF-HS	(2) 1000 MH	110000	25' POLE 2' BASE	0.75	5
OB1	☐	McGraw-Edison Talon (2) TLL-1000-MH-208-4F-FG-FF	(2) 1000 MH	110000	25' POLE 2' BASE	0.75	9
OC	☐	McGraw-Edison Talon (1) TLM-150-MP-120-4F-FG-F-DW	(1) 150 PSMH	14000	10' AFG	0.75	2

**SITE PHOTOMETRIC PLAN**

TRUE PROJECT NORTH

REVISIONS:	
REV-1	XX-XX-2013

DATE: 08-09-2013  
SCALE: -  
PROJECT: K1214  
DRAWN BY: IES  
DRAWING NAME:

**SITE PHOTOMETRIC PLAN**

DRAWING NUMBER:

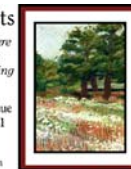
# E-0.1

**Living Habitats**

Landscape Architecture  
Ecological Services  
Environmental Planning  
Custom Artworks

6457 North Sayre Avenue  
Chicago, Illinois 60631  
p. 773-4671634

www.livinghabitats.com



# Gobben CARS

East Springs Drive  
Madison, Wisconsin

REVISIONS:

5	03 JUNE 2013
4	17 MAY 2013
3	12 APRIL 2013
2	27 MARCH 2013
1	30 JANUARY 2013

DATE: 12/19/2012  
SCALE: NTS  
PROJECT:  
DRAWN BY: CM/AP  
DRAWING NAME:

SITE RENDERINGS  
DRAWING NUMBER:

# A-3.4



**A** SITE RENDERING  
REFER TO GRAPHIC SCALE

Living Habitats

Landscape Architecture  
Ecological Services  
Environmental Planning  
Custom Artworks

6457 North Sayre Avenue  
Chicago, Illinois 60631  
p. 773-4671634  
www.livinghabitats.com



# Goben CARS

East Springs Drive  
Madison, Wisconsin



REVISIONS:

NO.	DATE	DESCRIPTION
4	17 MAY 2013	
3	12 APRIL 2013	
2	27 MARCH 2013	
1	30 JANUARY 2013	

DATE: 12/19/2012

SCALE: NTS

PROJECT:

DRAWN BY: CM/AP

DRAWING NAME:

SITE RENDERINGS

DRAWING NUMBER:

# A-3.2



**Living Habitats**

Landscape Architecture  
Ecological Services  
Environmental Planning  
Custom Artworks

6457 North Sayre Avenue  
Chicago, Illinois 60631  
p. 773-467-1634

www.livinghabitats.com



# Gobben CARS

East Springs Drive  
Madison, Wisconsin



**A** SITE RENDERING  
REFER TO GRAPHIC SCALE

REVISIONS:

5	03 JUNE 2013
4	17 MAY 2013
3	12 APRIL 2013
2	27 MARCH 2013
1	30 JANUARY 2013

DATE: 12/19/2012

SCALE: NTS

PROJECT:

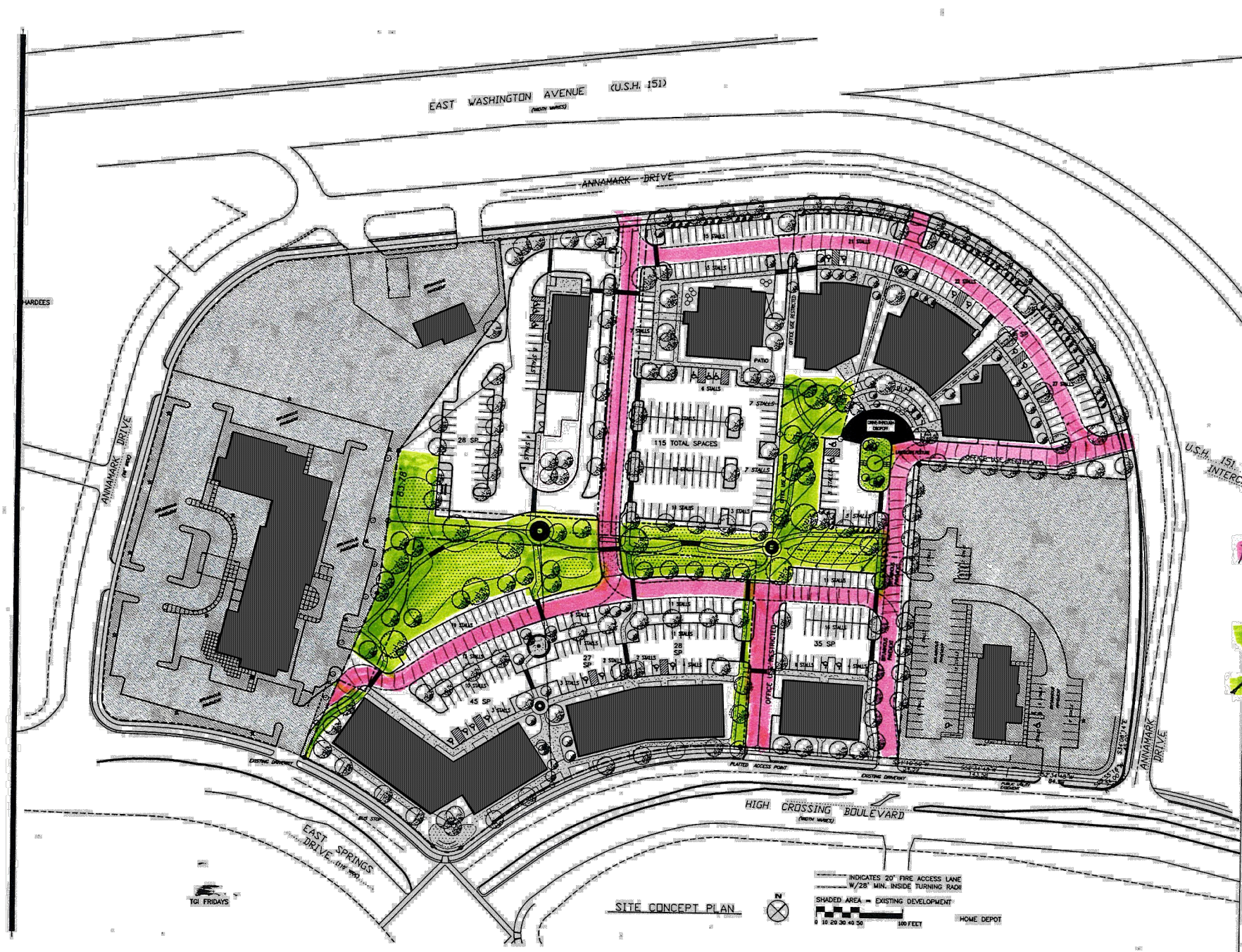
DRAWN BY: CM/AP

DRAWING NAME:

SITE RENDERINGS

DRAWING NUMBER:

# A-3.3



**DIMENSION IV  
MADISON**  
Architecture  
Engineering  
Interior Design  
313 West Redding Hwy., Suite 101  
Madison, WI 53713  
Phone (608) 229-4444 Fax (608) 229-4445

**ZEIER  
PLANNED  
COMMERCIAL  
SITE**  
HIGH CROSSING/ANNAMARK  
MADISON, WISCONSIN

- Private Drive designated on CSM or prior document
- Location of Private Drive to be designated in future
- Commons Area
- Commons Area to be designated in future

DATE OF ISSUE: 09/16/04  
REVISIONS:  
**PRELIMINARY  
NOT FOR  
CONSTRUCTION**  
PROJECT #: 03030

**SITE CONCEPT PLAN**  
INDICATES 20' FIRE ACCESS LANE  
W/20' MIN. INSIDE TURNING RADIUS  
SHADED AREA = EXISTING DEVELOPMENT  
HOME DEPOT

# Goblen CARS

East Springs Drive  
Madison, Wisconsin

REVISIONS:	
#1	1/30/2013
#2	3/27/2013

DATE: 27 MARCH 2013  
SCALE: NTS  
PROJECT: K1214  
DRAWN BY: ASH

**DRAWING NAME:**  
COMMERCIAL  
SITE PLAN  
**DRAWING NUMBER:**

**DP-1.2**

**DESCRIPTION**

The McGraw-Edison Talon is the most versatile, functionally designed, universally adaptable outdoor luminaire available. The Talon brings outstanding performance to walkways, parking lots, roadways, building areas, and any security lighting application. U.L. listed and CSA certified for wet locations. IP66 Rated.

<b>Catalog #</b>		<b>Type</b>	
<b>Project</b>			
<b>Comments</b>		<b>Date</b>	
<b>Prepared by</b>			

**SPECIFICATION FEATURES**

**Construction**

One-piece heavy-wall, die-cast aluminum construction with integral reveal channels along top surface of housing. Internal cast-in wall separates optical and electrical chambers allowing components to operate cooler. One-piece die-cast aluminum door frame with integral cast-in gasket channel seals optical chamber to an IP66 rating. Stainless steel latches and hinges allow for toolless opening and removal of door frame.

**Electrical**

Offered standard with ballast and related electrical componentry hard mounted to die-cast housing details for optimal heat transfer and operating efficiency. Optional galvanized steel swing-down power tray with integral handle. Electrical disconnects allow tray to be completely removed from the housing providing ample hand and tool room for attachment of fixture during installation.

**Optical**

**REFLECTOR:** Choice of 14 high efficiency optical systems utilizing horizontal and vertical lamp orientations. Optional high efficiency segmented optical systems constructed of premium 95% reflective anodized aluminum sheet. Optical segments are rigidly mounted inside a thick gauge aluminum housing for superior protection. All segment faces are clean of rivet heads, tabs or other means of attachment which may cause streaking in the light distribution. Standard with mogul-base socket for HPS, MH and 250-400W MP. Standard with medium-base socket for 200W MP and below. All optical modules feature quick disconnect wiring plugs and are field rotatable in 90° increments.

**Mounting**

Extruded 8" aluminum arm includes internal bolt guides allowing for easy positioning of fixture during installation to pole or wall surface. Standard single carton packaging of housing, square pole arm and round pole adapter for contractor friendly arrival of product on site.

**Finish**

Housing and arm finished in a 5 stage premium TGIC polyester powder coat paint, 2.5 mil nominal thickness for superior protection against fade and wear. Standard colors include black, bronze, grey, white, dark platinum, and graphite metallic. RAL and custom color matches available. Consult the McGraw-Edison Architectural Colors brochure for the complete selection.



**TLM  
TALON MEDIUM**

**70 - 400W**  
Pulse Start Metal Halide  
High Pressure Sodium  
Metal Halide

**ARCHITECTURAL  
AREA LUMINAIRE**



**ENERGY DATA**

**Hi-Reactance Ballast Input Watts**

- 70W HPS HPF (86 Watts)
- 70W MP HPF (94 Watts)
- 100W HPS HPF (115 Watts)
- 100W MP HPF (129 Watts)
- 150W HPS HPF (170 Watts)
- 150W MP HPF (185 Watts)

**CWA Ballast Input Watts**

- 175W MP HPF (198 Watts) G
- 200W HPS HPF (240 Watts)
- 200W MP HPF (227 Watts) G
- 250W HPS HPF (295 Watts)
- 250W MP HPF (283 Watts) G
- 320W MP HPF (361 Watts) G
- 350W MP HPF (397 Watts) G
- 400W HPS HPF (457 Watts)
- 400W MP HPF (452 Watts) G

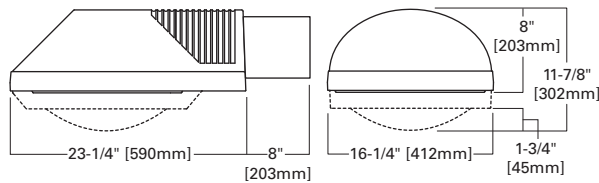
**EPA**

**Effective Projected Area: (Sq. Ft.)**  
**Recessed Door w/o Arm:** 0.79  
**Deep Door w/o Arm:** 1.02  
**8" Arm:** 0.43

**SHIPPING DATA**

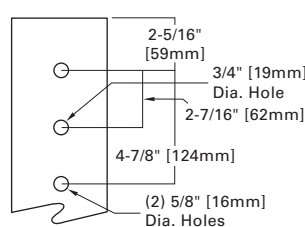
**Approximate Net Weight:**  
**Recessed Door:** 47 lbs. (21.79 kgs.)  
**Deep Door:** 52 lbs. (23.63 kgs.)

**DIMENSIONS**



**ARM DRILLING**

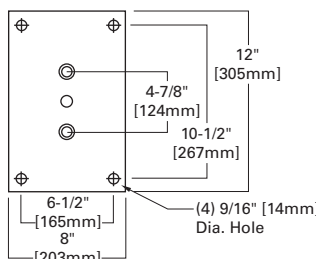
**TYPE "M"**



**WATTAGE TABLE**

Lamp Type	Wattage
Pulse Start Metal Halide (MP)	70, 100, 150, 175, 200, 250, 320, 350, 400W
High Pressure Sodium (HPS)	70, 100, 150, 250, 400W
Metal Halide (MH)	175, 250, 400W

**WALL DRILLING**



ORDERING INFORMATION

Sample Number: TLM-400-MP-MT-3F-FG-BK-HS

<b>Product Family <sup>1</sup></b> <b>TLM</b> =Talon Site Medium	<b>Voltage <sup>5</sup></b> <b>120</b> =120V <b>208</b> =208V <b>240</b> = 240V <b>277</b> : 277V <b>347</b> : 347V <b>480</b> : 480V <b>DT</b> : Dual-Tap <sup>6</sup> <b>MT</b> : Multi-Tap <sup>6</sup> <b>TT</b> : Triple-Tap <sup>6</sup>	<b>Distribution</b> <b>Horizontal Lamp</b> <b>2F</b> =Type II Formed <b>2S</b> = Type II Segmented <b>3F</b> : Type III Formed <b>3S</b> : Type III Segmented <b>4F</b> : Type IV Formed <b>4S</b> : Type IV Segmented <b>5F</b> : Type V Formed <b>5S</b> : Type V Segmented <b>SL</b> : Spill Light Eliminator <b>AF</b> : Automotive Front Row <b>Vertical Lamp</b> <b>3V</b> : Type III Vertical <sup>7</sup> <b>4V</b> : Type IV <sup>7</sup> Automotive Perimeter <b>AR</b> =Area Round <sup>7</sup> <b>AS</b> =Area Square <sup>7</sup>	<b>Color <sup>8</sup></b> <b>AP</b> =Grey <b>BZ</b> =Bronze <b>BK</b> : Black <b>WH</b> : White <b>DP</b> : Dark Platinum <b>GM</b> : Graphite Metallic	<b>Options <sup>9</sup></b> <b>CEC</b> =California Title 20 Compliant Ballast (Applies to 175-400W MP only) <b>F</b> : Single Fuse (120, 277 or <sup>10</sup> 347V) <b>FF</b> : Double Fuse (208, 240 or <sup>10</sup> 480V) <b>L</b> : Lamp Included <b>P</b> : Button Type Photocontrol <sup>10</sup> (120, 208, 240 or 277V) <b>EM</b> : Quartz Restrike w/Delay <sup>11</sup> (Also Strikes at Cold Start) <b>Q</b> : Quartz Restrike <sup>11</sup> <b>EM/SC</b> : Quartz Emergency <sup>11</sup> Separate Circuit <b>PT</b> : Electrical Power Tray <b>R</b> : NEMA Twistlock Photocontrol Receptacle <b>HS</b> : Internal House-side Shield <sup>12</sup> <b>VS</b> : Polycarbonate Vandal Shield <b>DD</b> =Deep Door <b>WM</b> =Wall Mount with 8 Inch Arm <b>DM</b> =Direct Mount for Round or Square Pole <b>DW</b> =Direct Wall Mount <b>MS</b> =External Mast Arm Adapter <b>HL</b> =Hi/Low Dimming <sup>13</sup>	<b>Accessories <sup>14</sup></b> <b>MA1010-XX</b> =Single Tenon Adapter for 3 1/2" O.D. Tenon <b>MA1011-XX</b> =2@180° Tenon Adapter for 3 1/2" O.D. Tenon <b>MA1012-XX</b> : 3@120° Tenon Adapter for 3 1/2" O.D. Tenon <b>MA1013-XX</b> : 4@90° Tenon Adapter for 3 1/2" O.D. Tenon <b>MA1014-XX</b> : 2@90° Tenon Adapter for 3 1/2" O.D. Tenon <b>MA1015-XX</b> : 2@120° Tenon Adapter for 3 1/2" O.D. Tenon <b>MA1016-XX</b> : 3@90° Tenon Adapter for 3 1/2" O.D. Tenon <b>MA1017-XX</b> : Single Tenon Adapter for 2 3/8" O.D. Tenon <b>MA1018-XX</b> : 2@180° Tenon Adapter for 2 3/8" O.D. Tenon <b>MA1019-XX</b> : 3@120° Tenon Adapter for 2 3/8" O.D. Tenon <b>MA1045-XX</b> : 4@90° Tenon Adapter for 2 3/8" O.D. Tenon <b>MA1048-XX</b> : 2@90° Tenon Adapter for 2 3/8" O.D. Tenon <b>MA1049-XX</b> : 3@90° Tenon Adapter for 2 3/8" O.D. Tenon <b>OA/RA1016</b> =NEMA Twistlock Photocontrol (105-285V) <b>OA/RA1027</b> =NEMA Twistlock Photocontrol (480V) <b>OA/RA1201</b> =NEMA Twistlock Photocontrol (347V) <b>OA/RA1013</b> =Photocontrol Shorting Cap <b>MA1213-XX</b> =External House-side Shield Kit [EPA= 0.38]
<b>Lamp Wattage <sup>2</sup></b> <b>MP</b> <b>70</b> : 70W <b>100</b> : 100W <b>150</b> : 150W <b>175</b> : 175W <b>200</b> : 200W <sup>3</sup> <b>250</b> : 250W <b>320</b> : 320W <sup>3</sup> <b>350</b> : 350W <sup>3</sup> <b>400</b> : 400W <sup>3</sup> <b>HPS</b> <b>70</b> : 70W <b>100</b> : 100W <b>150</b> : 150W <b>250</b> : 250W <b>400</b> =400W <b>MH <sup>4</sup></b> <b>175</b> =175W <b>250</b> =250W <b>400</b> =400W <sup>3</sup>	<b>Lens Type</b> <b>FG</b> =Flat Glass <b>SG</b> =Sag Glass	<b>Lamp Type</b> <b>MP</b> =Pulse Start Metal Halide <b>HPS</b> =High Pressure Sodium <b>MH</b> =Metal Halide <sup>4</sup>			

- Notes: 1 8" arm and round pole adapter included with fixture.  
 2 Standard with mogul-base socket for HPS, MH and 175 - 400W MP. Vertical optics offered with medium-base socket standard up to 200W MP.  
 3 Requires reduced envelope lamp.  
 4 175, 250 and 400W MH available for non-US markets only.  
 5 Products also available in non-US voltages and 50Hz for international markets. Consult factory for availability and ordering information.  
 6 Dual-Tap ballast is 120/277V wired 277V. Multi-Tap ballast is 120/208/240/277V wired 277V. Triple-Tap ballast is 120/277/347V wired 347V.  
 7 Vertical lamp optics ship standard with deep door. 250 - 400W not available with flat glass.  
 8 Custom and RAL color matching available upon request. Consult Cooper Lighting Representative for further information.  
 9 Add as suffix.  
 10 Must specify voltage.  
 11 Quartz options not available with SL and AF optics.  
 12 House-side shield not available on 5S, 5F, AS, AR, and SL optics.  
 13 Requires vertical lamp orientation. Provides 24V low voltage leads used in dimming control.  
 14 Order separately, replace XX with color designation.

**DESCRIPTION**

The McGraw-Edison Talon is the most versatile, functionally designed, universally adaptable outdoor luminaire available. The Talon brings outstanding performance to walkways, parking lots, roadways, loading docks, building areas, and any security lighting application. U.L. listed and CSA certified for wet locations. IP65 Rated.

<b>Catalog #</b>		<b>Type</b>
<b>Project</b>		
<b>Comments</b>		<b>Date</b>
<b>Prepared by</b>		

**SPECIFICATION FEATURES**

**Construction**

One-piece heavy-wall, die-cast aluminum construction with integral reveal channels along top surface of housing. Internal cast-in wall separates optical and electrical chambers allowing components to operate cooler. One-piece die-cast aluminum door frame with integral cast-in gasket channel seals optical chamber to an IP65 rating. Stainless steel latches and hinges allow for toolless opening and removal of door frame.

**Electrical**

Electrical componentry mounted on a swing-down galvanized steel power tray with integral handle. Electrical disconnects allow tray to be completely removed from the housing providing ample hand and tool room for attachment of fixture during installation.

**Optical**

**REFLECTOR:** Choice of 14 high efficiency optical systems utilizing horizontal and vertical lamp orientations. Optional high efficiency segmented optical systems constructed of premium 95% reflective anodized aluminum sheet. Optical segments are rigidly mounted inside a thick gauge aluminum housing for superior protection. All segment faces are clean of rivet heads, tabs or other means of attachment which may cause streaking in the light distribution. Standard with mogul-base socket. All optical modules feature quick disconnect wiring plugs and are field rotatable in 90° increments.

**Mounting**

Extruded 10 1/2" aluminum arm includes internal bolt guides allowing for easy positioning of fixture during installation to pole or wall surface. Standard single carton packaging of housing, square pole arm and round pole adapter for contractor friendly arrival of product on site.

**Finish**

Housing and arm finished in a 5 stage premium TGIC polyester powder coat paint, 2.5 mil nominal thickness for superior protection against fade and wear. Standard colors include black, bronze, grey, white, dark platinum, and graphite metallic. RAL and custom color matches available. Consult the McGraw-Edison Architectural Colors brochure for the complete selection.



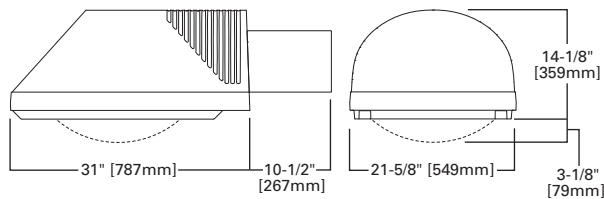
**TLL  
TALON LARGE**

**250 - 1000W**  
Pulse Start Metal Halide  
High Pressure Sodium  
Metal Halide

**ARCHITECTURAL  
AREA LUMINAIRE**

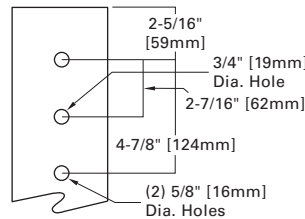


**DIMENSIONS**

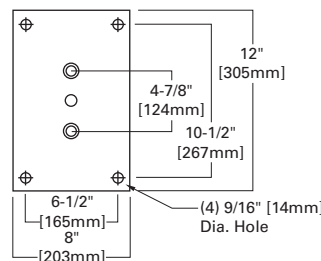


**ARM DRILLING**

**TYPE "M"**



**WALL DRILLING**



**WATTAGE TABLE**

Lamp Type	Wattage
Pulse Start Metal Halide (MP)	250, 320, 350, 400, 450, 750, 875, 1000W
High Pressure Sodium (HPS)	250, 400, 750, 1000W
Metal Halide (MH)	250, 400, 1000W

**ENERGY DATA**

**CWA Ballast Input Watts**

250W HPS HPF (295 Watts)
250W MP HPF (283 Watts) ©
320W MP HPF (361 Watts) ©
350W MP HPF (397 Watts) ©
400W HPS HPF (457 Watts)
400W MP HPF (452 Watts) ©
450W MP HPF (508 Watts) ©
750W HPS HPF (840 Watts)
750W MP HPF (820 Watts) ©
1000W HPS HPF (1100 Watts)
1000W MP HPF (1070 Watts) ©
1000W MH HPF (1080 Watts)

**EPA**  
**Effective Projected Area: (Sq. Ft.)**  
3.28 with 10.5" ARM

**SHIPPING DATA**  
**Approximate Net Weight:**  
400W 91 lbs. (41.36 kgs.)  
1000W 98 lbs. (44.54 kgs.)



ORDERING INFORMATION

Sample Number: TLL-1000-MP-5T-SL-FG-BK

<b>Product Family <sup>1</sup></b> <b>TLL=Talon Site Large</b>	<b>Voltage <sup>4</sup></b> <b>120=120V</b> <b>208=208V</b> <b>240=240V</b> <b>277=277V</b> <b>347=347V</b> <b>480=480V</b> <b>DT= Dual-Tap<sup>5</sup></b> <b>MT= Multi-Tap<sup>5</sup></b> <b>TT= Triple-Tap<sup>5</sup></b> <b>5T= 5-Tap<sup>5</sup></b>	<b>Distribution</b> <b>Horizontal Lamp</b> <b>2F=Type II Formed</b> <b>2S=Type II Segmented<sup>2, 6</sup></b> <b>3F=Type III Formed</b> <b>3S= Type III Segmented<sup>2, 6</sup></b> <b>4F= Type IV Formed</b> <b>4S= Type IV Segmented<sup>2, 6</sup></b> <b>5F= Type V Formed</b> <b>5S= Type V Segmented<sup>2, 6</sup></b> <b>SL= Spill Light Eliminator</b> <b>Vertical Lamp</b> <b>3V= Type III Vertical</b> <b>4V= Type IV Automotive Perimeter</b> <b>AR= Area Round</b> <b>AS= Area Square</b> <b>AF= Automotive Front Row</b> <b>Lens Type</b> <b>FG= Flat Glass</b> <b>SG=Sag Glass</b>	<b>Color <sup>7</sup></b> <b>AP=Grey</b> <b>BZ=Bronze</b> <b>BK=Black</b> <b>WH=White</b> <b>DP= Dark Platinum</b> <b>GM= Graphite Metallic</b>	<b>Options</b> <b>CEC=California Title 20 Compliant Ballast (Applies to 250-400W MP only)</b> <b>F= Single Fuse (120, 277 or<sup>8</sup> 347V)</b> <b>FF= Double Fuse (208, 240 or<sup>8</sup> 480V)</b> <b>L= Lamp Included</b> <b>EM= Quartz Restrike w/Delay<sup>9</sup> (Also Strikes at Cold Start)</b> <b>Q= Quartz Restrike<sup>9</sup></b> <b>EM/SC= Quartz Emergency<sup>9</sup> Separate Circuit</b> <b>R= NEMA Twistlock Photocontrol Receptacle</b> <b>HS= Internal House-side<sup>10</sup> Shield</b> <b>WM= Wall Mount with 10 1/2 Inch Arm</b> <b>DM= Direct Mount for Round or Square Pole</b> <b>DW=Direct Wall Mount</b> <b>HL=Hi/Low Dimming<sup>11</sup></b>	<b>Accessories <sup>12</sup></b> <b>MA1010-XX=Single Tenon Adapter for 3 1/2" O.D. Tenon</b> <b>MA1011-XX=2@180° Tenon Adapter for 3 1/2" O.D. Tenon</b> <b>MA1012-XX=3@120° Tenon Adapter for 3 1/2" O.D. Tenon</b> <b>MA1013-XX= 4@90° Tenon Adapter for 3 1/2" O.D. Tenon</b> <b>MA1014-XX= 2@90° Tenon Adapter for 3 1/2" O.D. Tenon</b> <b>MA1015-XX= 2@120° Tenon Adapter for 3 1/2" O.D. Tenon</b> <b>MA1016-XX= 3@90° Tenon Adapter for 3 1/2" O.D. Tenon</b> <b>MA1017-XX= Single Tenon Adapter for 2 3/8" O.D. Tenon</b> <b>MA1018-XX= 2@180° Tenon Adapter for 2 3/8" O.D. Tenon</b> <b>MA1019-XX= 3@120° Tenon Adapter for 2 3/8" O.D. Tenon</b> <b>MA1045-XX= 4@90° Tenon Adapter for 2 3/8" O.D. Tenon</b> <b>MA1048-XX= 2@90° Tenon Adapter for 2 3/8" O.D. Tenon</b> <b>MA1049-XX= 3@90° Tenon Adapter for 2 3/8" O.D. Tenon</b> <b>OA/RA1016=NEMA Twistlock Photocontrol (105-285V)</b> <b>OA/RA1027=NEMA Twistlock Photocontrol (480V)</b> <b>OA/RA1201=NEMA Twistlock Photocontrol (347V)</b> <b>OA/RA1013=Photocontrol Shorting Cap</b> <b>MA1214-XX=External House-side Shield Kit [EPA = 0.94]</b>		

Omit HS for Type OB1

Notes: 1 10 1/2" arm and round pole adapter included with fixture. 2 Requires reduced envelope lamp. 3 250 and 400W are available for non-US markets only. 4 Products also available in non-US voltages and 50Hz for international markets. Consult factory for availability and ordering information. 5 Dual-Tap ballast is 120/277V wired 277V. Multi-Tap ballast is 120/208/240/277V wired 277V. Triple-Tap ballast is 277/347/480V wired 347V. 5-Tap ballast is 120/208/240/277/480V wired 480V. 6 Maximum wattage on segmented optical distributions is 400W. 7 Custom and RAL color matching available upon request. Consult Cooper Lighting Representative for further information. 8 Must specify voltage. 9 Quartz options not available with SL and AF optics. 10 House-side shield not available on 5S, 5F, AS, AR, and SL optics. 11 Requires vertical lamp orientation. Provides 24V low voltage leads used in dimming control. 12 Order separately, replace XX with color designation.