



550 Sunrise Drive; Suite 201
P.O. Box 1024
Spring Green, WI 53588
Phone: (608) 588-3691
Fax: (608) 588-3582

MEMO

Date: 11-1-13

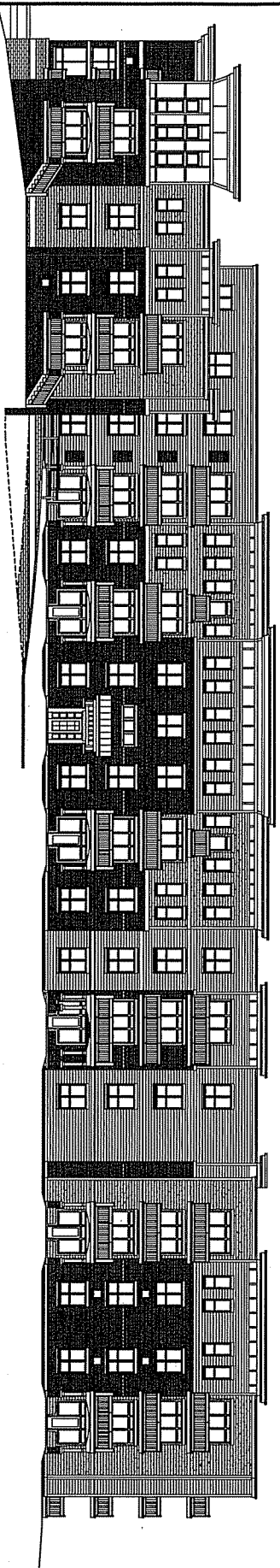
To: Kevin Firchow - City of Madison Planning Dept.

From: Brian Stoddard

Subject: 502 Apollo Way elevation revisions

The following is a list of revisions we have made to the street side building elevation per comments from planning staff and UDC. We feel confident that we can obtain final approval from UDC at their November 13th meeting.

- Added unit entries to the four units on the “end caps” of the building facing Apollo Way.
- Simplified the architectural detailing by eliminating the board & batten details and only using it as cornice detailing and the corner tower detail.
- Eliminated the ‘dips’ in the exterior material transitions.
- Added posts, brick bases, and arches at the unit entry patios to improve the unit entry imagery connection to the street.
- Added brick veneer.
- Eliminated the majority of hvac grilles facing the street.
- We will also be toning down the color a little bit.



1 EAST ELEVATION
SCALE: 3/32" = 1'-0"

Planning / UDC Revisions
10-31-13

11/1 REVISED FRONT ELEVATION

15

Project Name	502 Apollo Way
Project Address	Lot 465
Project Location	Grandview Commons
Project City	Madison, WI
Project Date	10.28.2013
Project No.	1307
Project Rev.	A-2.1

502 Apollo Way
Lot 465
Grandview Commons
Madison, WI

AVENUE
Architects, Inc.

550 Sunnyside Drive, Suite 201
Fond Du Lac, WI 53526
Phone: 408-588-3491
Fax: 408-588-3382