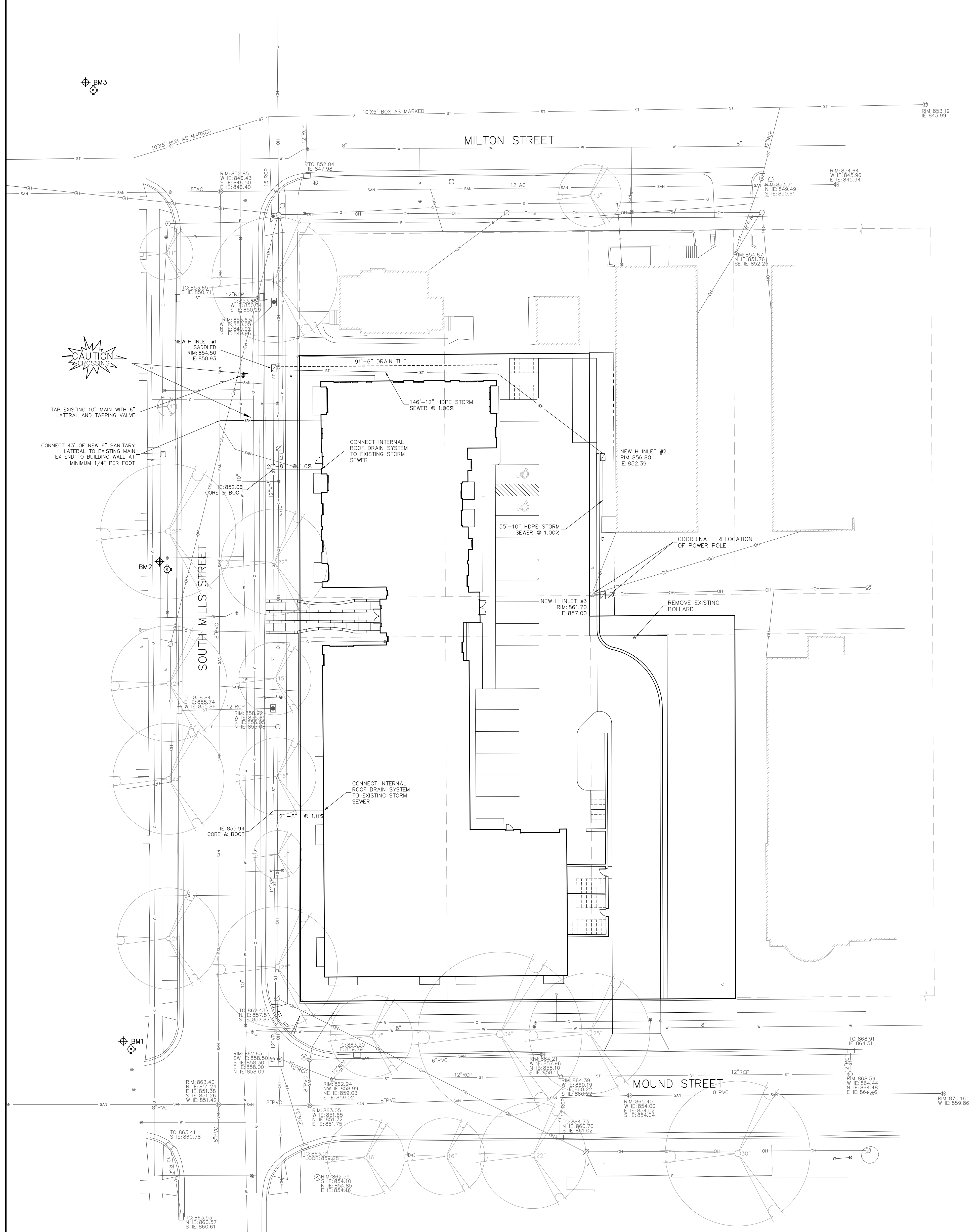


- NOTES:
- ALL PRIVATE UTILITIES (GAS, ELECTRIC, AND TELECOMMUNICATIONS) SERVING EXISTING BUILDINGS SCHEDULED FOR DEMOLITION TO BE ABANDONED OR REMOVED BY CORRESPONDING UTILITY COMPANY.
 - IT IS THE CONTRACTOR'S RESPONSIBILITY TO VERIFY THE LOCATION OF UNDERGROUND UTILITIES. UTILITIES WERE LOCATED BY OBSERVED EVIDENCE, MARKINGS PROVIDED BY DIGGER'S HOTLINE, AND RECORD DRAWINGS FROM THE CITY OF MADISON.
 - THE CITY WILL ISSUE CONSTRUCTION PLANS FOR ALL PUBLIC IMPROVEMENTS IN THE RIGHT-OF-WAY. THE CONTRACTOR WILL BE BOUND TO INSTALL SAID IMPROVEMENTS IN ACCORDANCE WITH CITY STANDARD SPECIFICATIONS AND APPROVED PLANS.



BENCHMARK TABLE

NUMBER	ELEVATION	DESCRIPTION
1	885.24	TOP NUT HYDRANT AT S. MILLS ST. AND MOUND ST.
2	854.45	TOP NUT HYDRANT AT S. MILLS ST. AND ST. JAMES CT.
3	854.80	TOP NUT HYDRANT AT S. MILLS ST. AND MILTON ST.

TO OBTAIN LOCATION OF PARTICIPANTS' UNDERGROUND FACILITIES BEFORE YOU DIG IN WISCONSIN.

CALL DIGGERS HOTLINE
1-800-242-8511 OR 811
TOLL FREE

TDD/(FOR THE HEARING IMPAIRED)/(800)542-2289

WS. STATUTE 182.0175 (1974)
REQUIRES MIN. OF 3 WORK DAYS NOTICE BEFORE YOU EXCAVATE.

LEGEND

—○—	OVERHEAD UTILITY	⊗	FIRE HYDRANT
—○—	BURIED GAS MAIN	⊙	CIRCULAR CATCH BASIN
—○—	WATER MAIN	⊠	RECTANGULAR CATCH BASIN
—○—	SANITARY SEWER	⊞	STORM SEWER INLET
—○—	STORM SEWER	⊚	ELECTRIC MANHOLE
—○—	BURIED TELEPHONE	⊛	TELECOMM. MANHOLE
—○—	BURIED ELECTRIC	⊜	STORM SEWER MANHOLE
—○—	BURIED CABLE TV	⊝	SANITARY SEWER MANHOLE
—○—	BURIED FIBER OPTIC	⊞	DECIDUOUS TREE
●	WATER VALVE	⊞	CONIFEROUS TREE
●	GAS VALVE	BT	BITUMINOUS PAVEMENT
⊞	CABLE TV PEDESTAL	⊞	CONCRETE PAVEMENT
⊞	ELECTRIC PEDESTAL	LS	LANDSCAPING
⊞	TELEPHONE PEDESTAL	●	BOLLARD
⊞	UTILITY POLE	⊞	BENCHMARK
⊞	LIGHT POLE		
—	GUY WIRE		
—	SIGN		
⊞	IRON PIPE FOUND (OUTSIDE DIAMETER NOTED)		
●	SOLID IRON ROD FOUND SIZE NOTED		
○	3/4" X 18" SOLID IRON RE-ROD SET, WT. 1.50 LBS./FT.		
○	SET MAG NAIL		
()	INDICATES RECORDED AS		

DISTANCES ARE MEASURED TO THE NEAREST HUNDRETH OF A FOOT; BUILDING DIMENSIONS ARE MEASURED TO THE NEAREST TENTH OF A FOOT.

Burse
Surveying and Engineering, Inc.

1400 E. Washington Ave, Suite 150
Madison, WI 53703
Phone: 608-250-9263
Fax: 608-250-9266
e-mail: mburse@bse-inc.net
www.burseurveyengr.com

Vicinato Apartments
South Mills Street
Madison, Wisconsin

Gallina Companies
101 E. Main St., Suite 500
Mt. Horeb, WI 53572

PROJECT #: BSE1620

PLOT DATE: 09/17/2013

REVISION DATES:
09/17/2013

ISSUE DATES:
07/31/2013
09/17/2013

UTILITY PLAN

Burse
Surveying and Engineering, Inc.

This document contains confidential or proprietary information of Burse Surveying and Engineering, Inc. Neither the document nor the information herein is to be reproduced, distributed, used or disclosed, either in whole or in part, except as specifically authorized by Burse Surveying and Engineering, Inc.

DRAWING NUMBER
C-104